

Libya

Travel Facts



US State Department Travel Advisory

The US State Department currently recommends US citizens DO NOT TRAVEL to Libya due to crime, terrorism, unexploded landmines, civil unrest, kidnapping, and armed conflict.

<https://travel.state.gov/content/travel/en/traveladvisories/traveladvisories.html>

Passport/Visa Requirements

For the latest passport and visa requirements for this country, please consult the US State Department's "Learn About Your Destination" search tool, available through the link below.

<https://travel.state.gov/content/travel/en/international-travel/International-Travel-Country-Information-Pages.html>

US Embassy/Consulate

Please direct inquiries regarding US citizens in Libya to LibyaEmergencyUSC@state.gov; US Embassy in Tripoli is closed, contact the Libya External Office at the US Embassy in Tunis; [216] 71 107-000; Les Berges du Lac, 1053 Tunis; LibyaACS@state.gov;

<https://ly.usembassy.gov/>

LGBTQIA+, Women, and Special Needs Travelers

Additional travel considerations can be found on the U.S. State Department's International Travel page.

<https://travel.state.gov/content/travel/en/international-travel/before-you-go/travelers-with-special-considerations.html>

Telephone Code

218

Local Emergency Phone

Ambulance 193, Fire/Police 1515

Vaccinations

The CDC and WHO recommend the following vaccinations for Libya: hepatitis A, hepatitis B, typhoid, rabies, meningitis, polio, measles, mumps and rubella (MMR), Tdap (tetanus, diphtheria and pertussis), chickenpox, shingles, pneumonia, COVID-19, and influenza.

<https://wwwnc.cdc.gov/travel/destinations/list>

Climate

Mediterranean along coast; dry, extreme desert interior

Currency (Code)

Libyan dinars (LYD)

Electricity/Voltage/Plug Type(s)

230 V / 50 Hz / plug types(s): C, L



Type C



Type L

Major Languages

Arabic, Italian, English, Berber

Major Religions

Muslim (virtually all Sunni), Christian, Buddhist

Time Difference

UTC+2 (7 hours ahead of Washington, DC, during Standard Time)

Potable Water

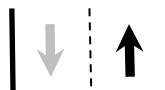
Opt for bottled water

International Driving Permit

Suggested

Road Driving Side

Right



Tourist Destinations

Tadrart Acacus; Cyrene; Leptis Magna; Old Town Ghadames; Sabratha; Tripoli (includes Arch of Marcus Aurelius, Red Castle Museum)

Major Sports

Soccer

Cultural Practices

Libyans value courtesy. It is considered rude to criticize another person directly or to discuss family matters in public.

Tipping Guidelines

A service charge of 10-20% is customary on restaurant and hotel bills.

Souvenirs

Ghadames slippers, blended oils/perfumes, stamps, gold jewelry inlaid with precious stones, leather goods, hand-loomed rugs, pottery, stringed musical instruments, copperware, palm leaf baskets

Traditional Cuisine

Cuscus Bil-Bosla — couscous cooked with lamb, chickpeas, potatoes, and tomatoes

August 2024

