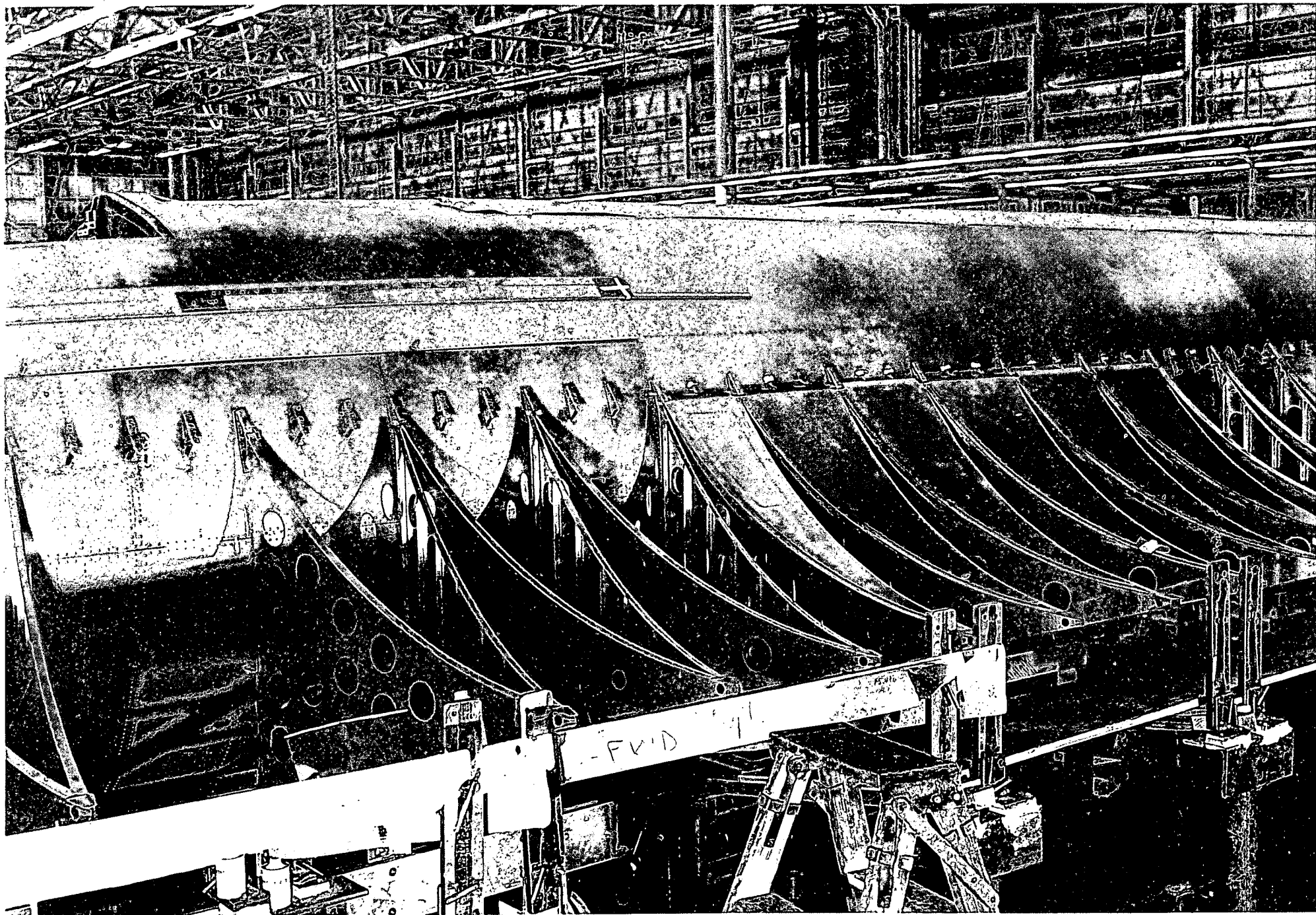
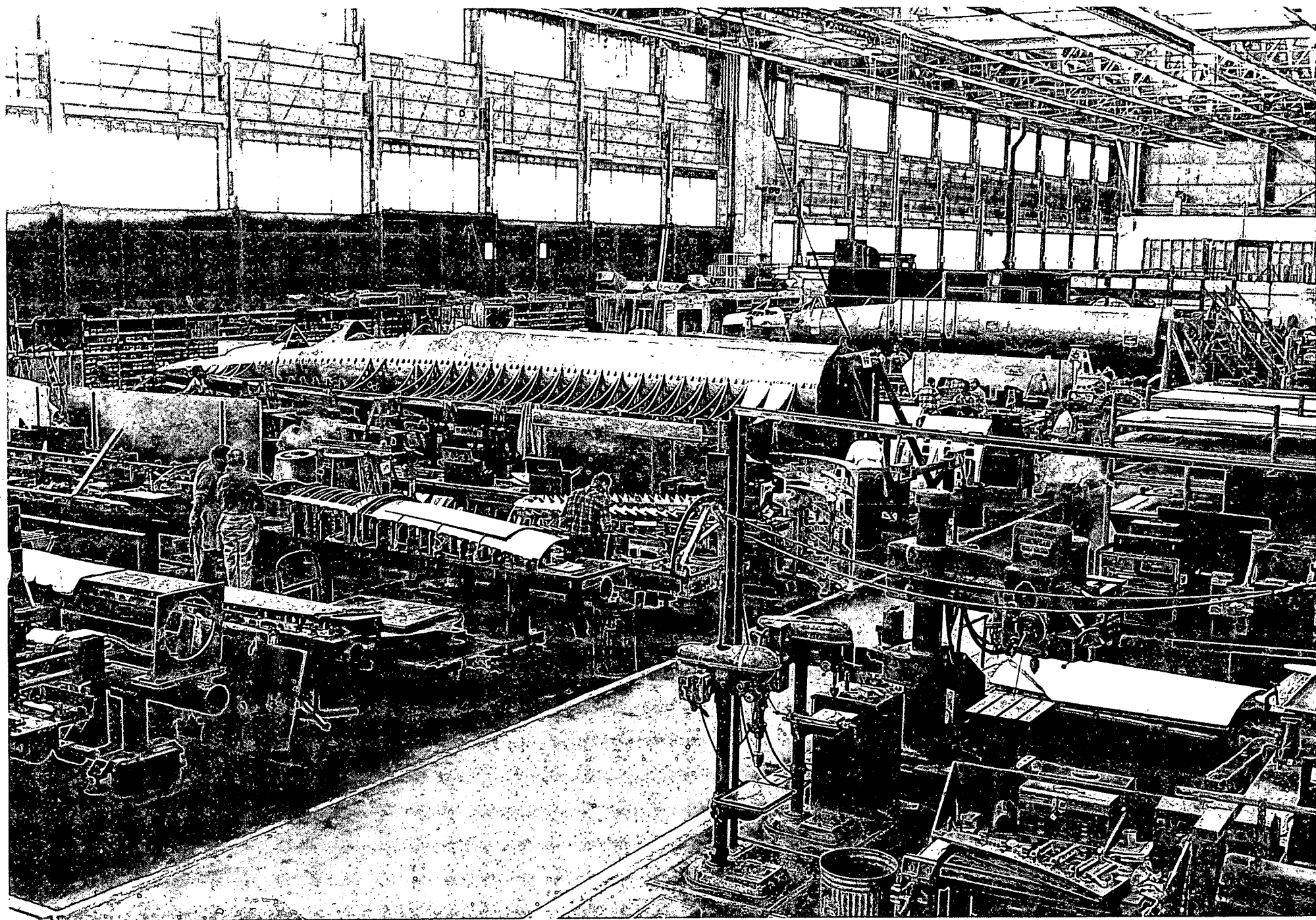


#1 + #2 Fuselage



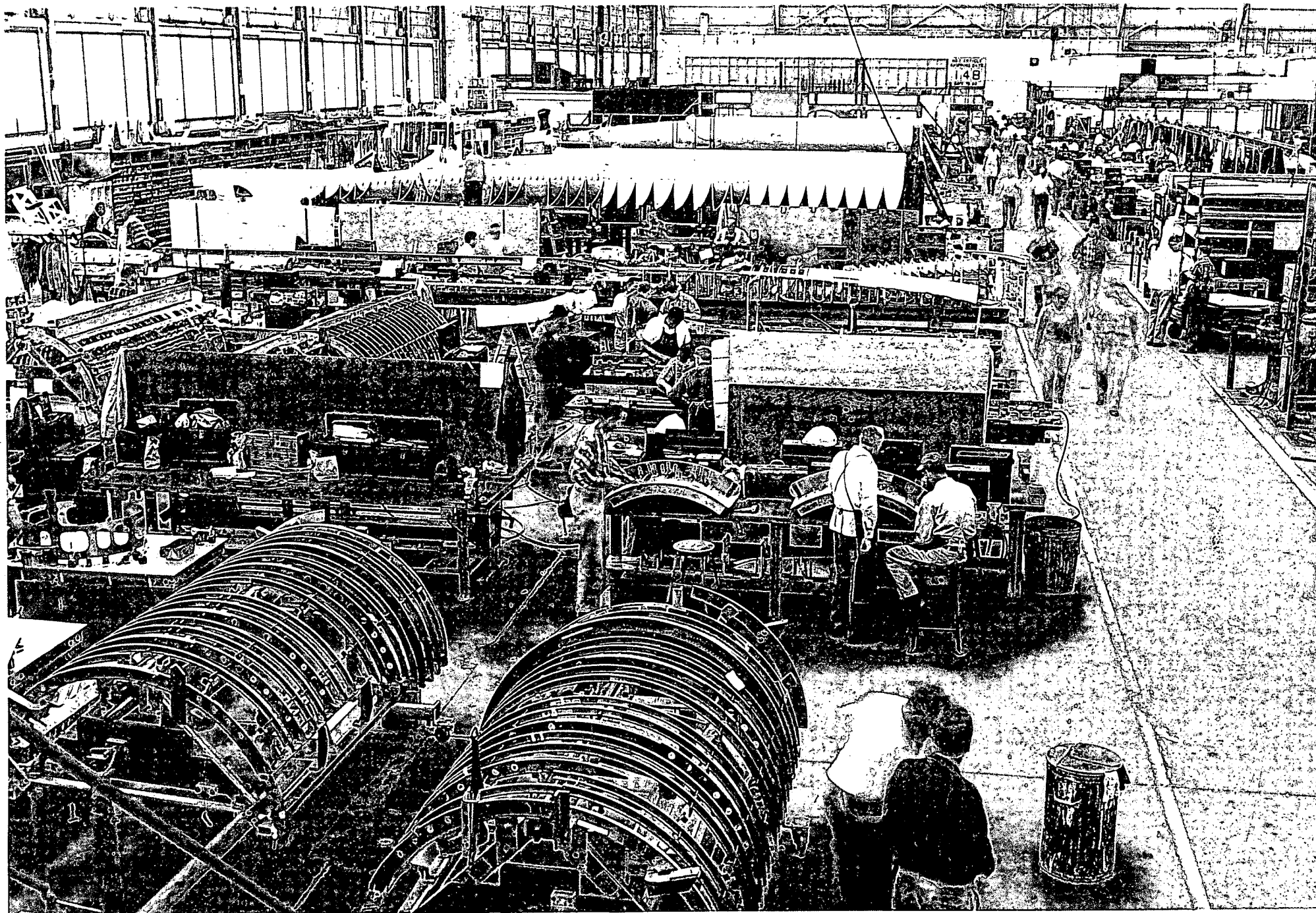
#1 Fuselage Chine

#1 Fuselage Chine



#1 Fuselage Chine

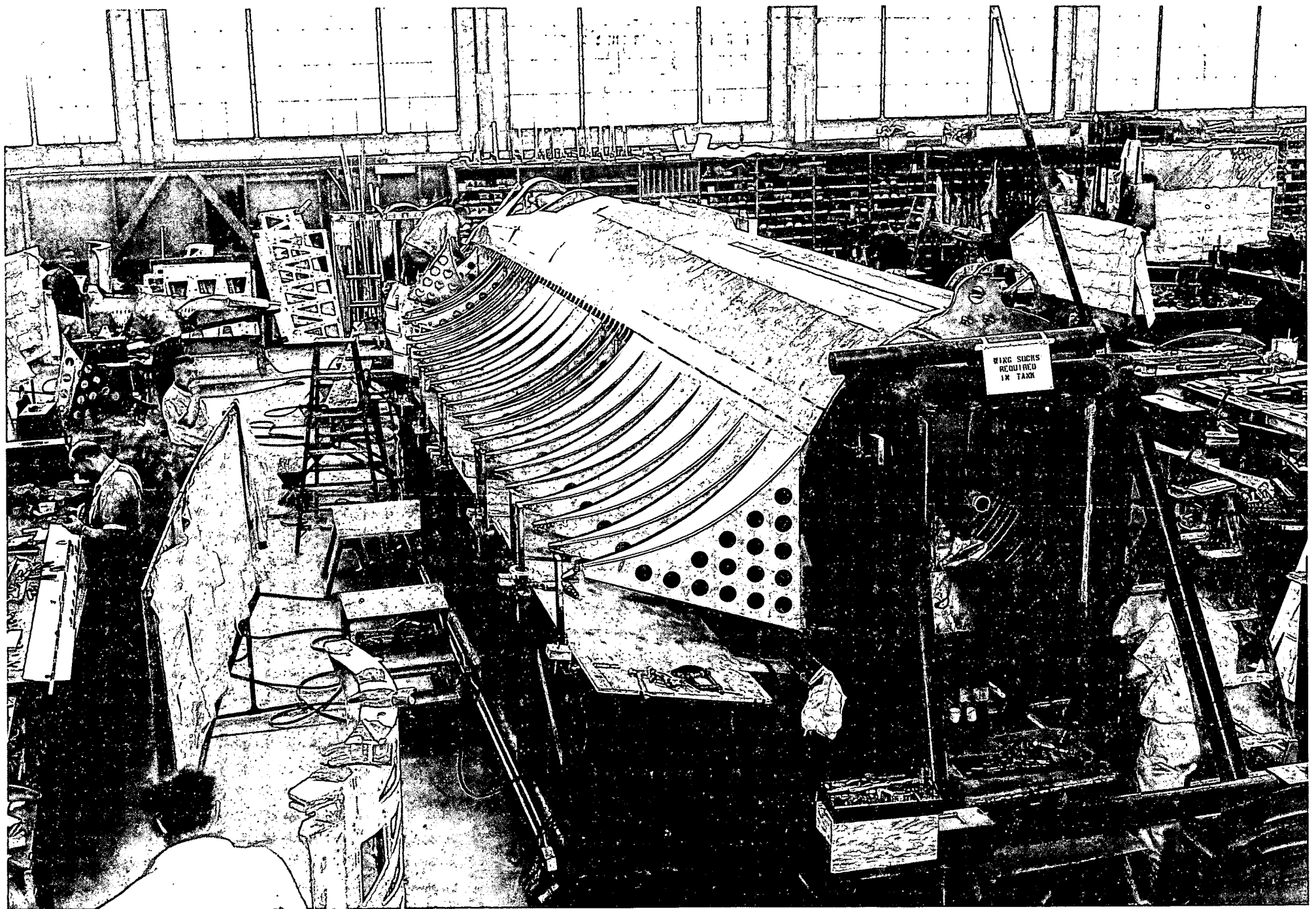
#1 Fuselage Chine



#1 Fuselage Chine

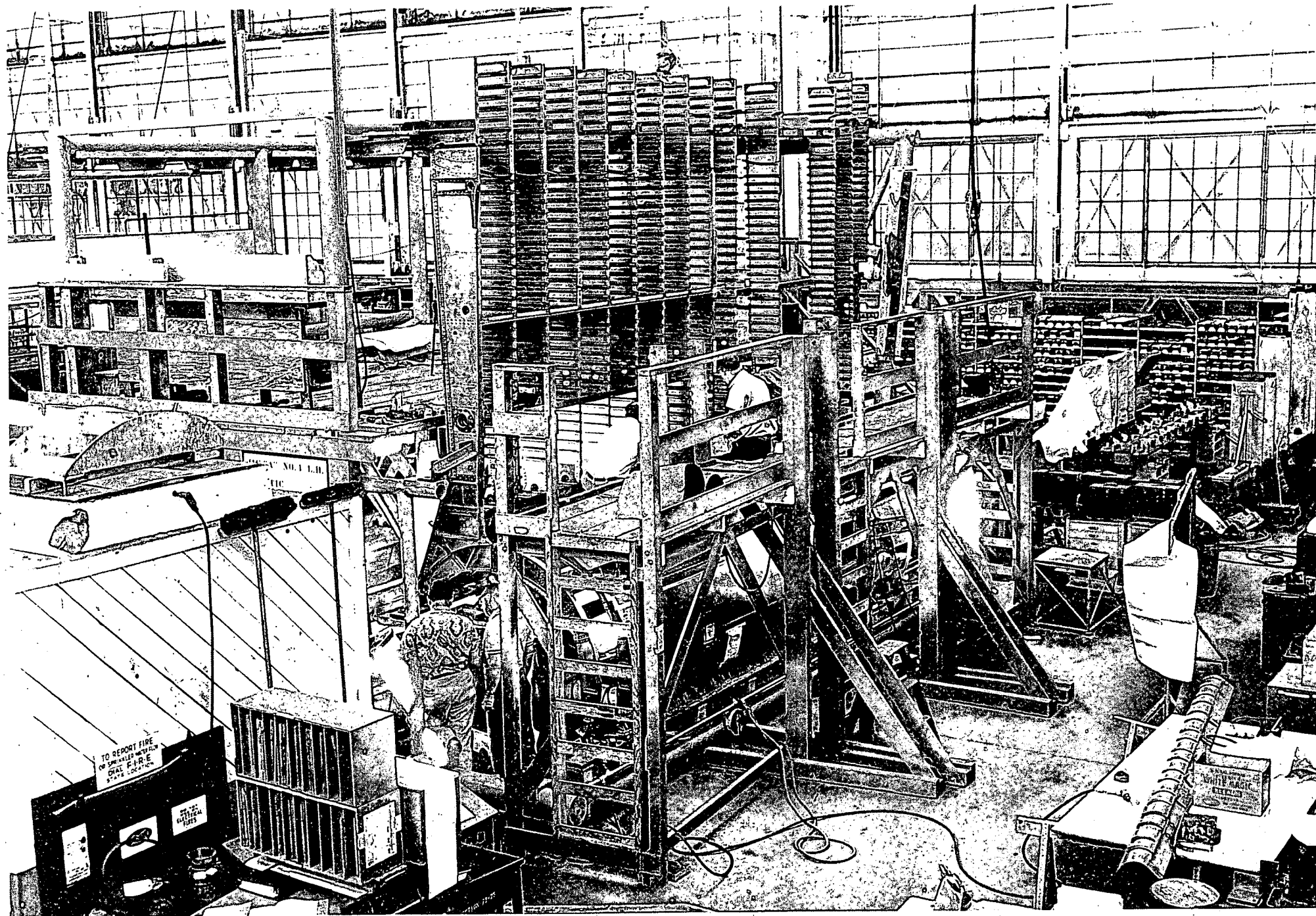
#1 Fuselage Chine



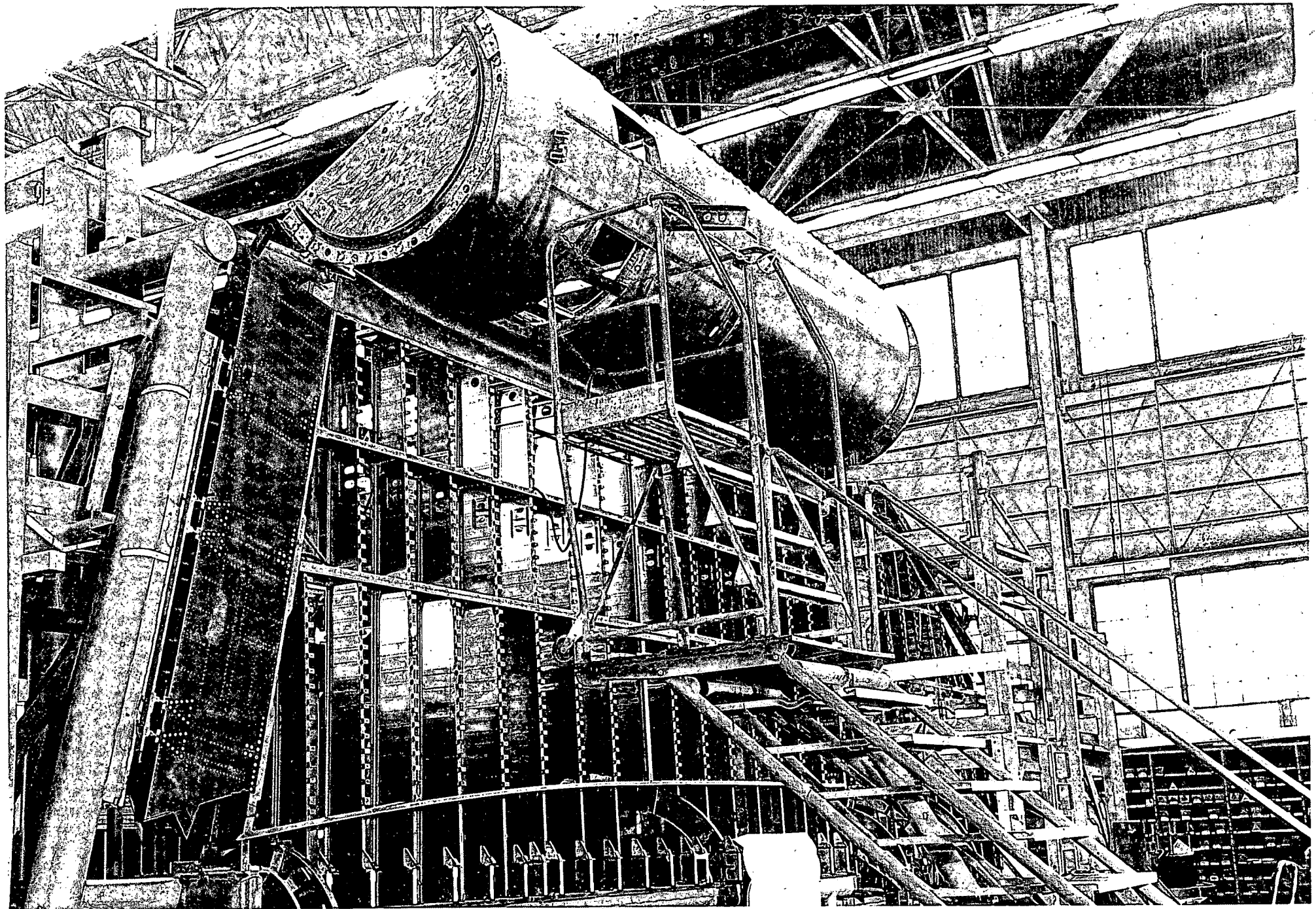


#1 Fuselage Chine

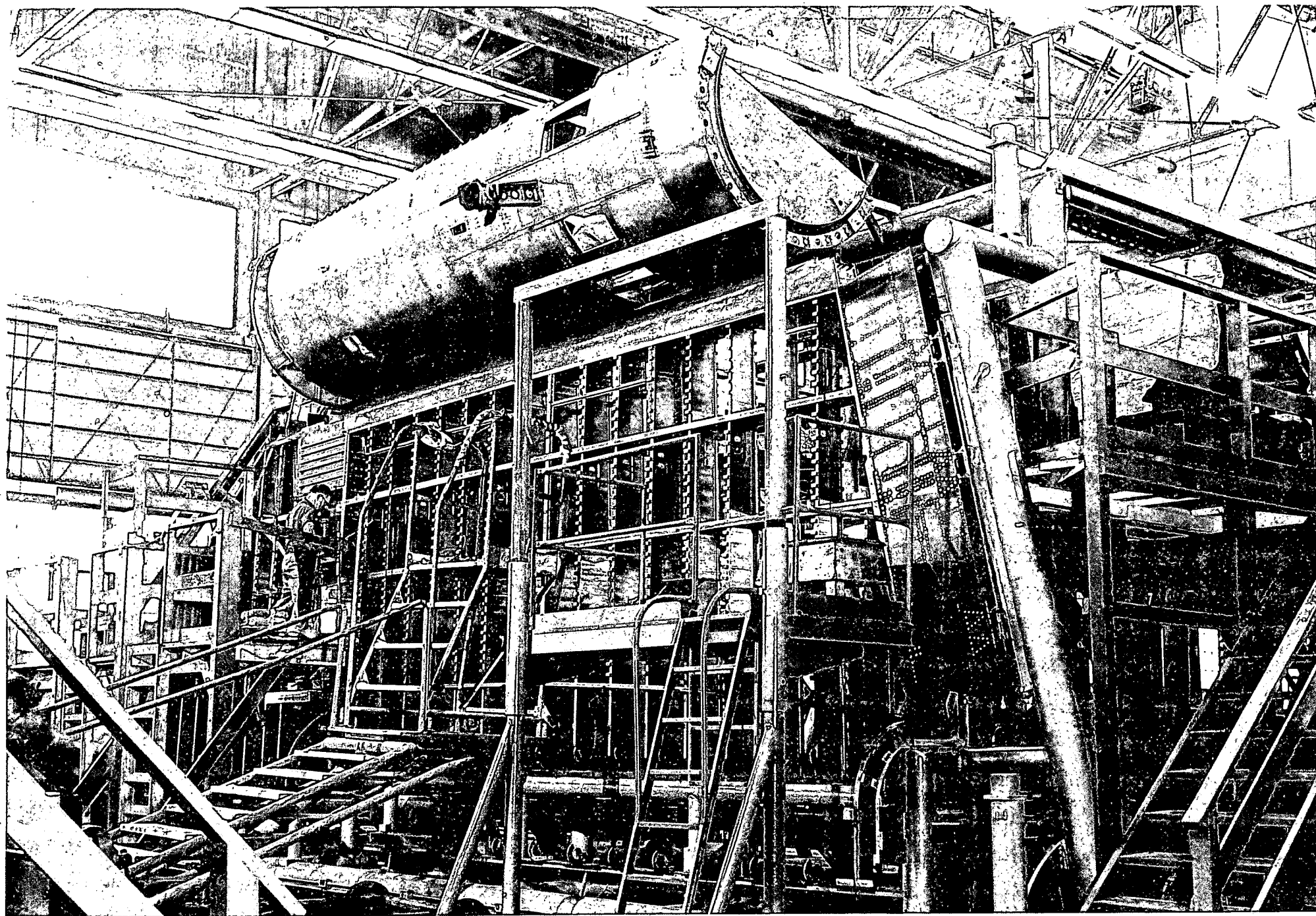
411 A 117



# Static Wing Beams

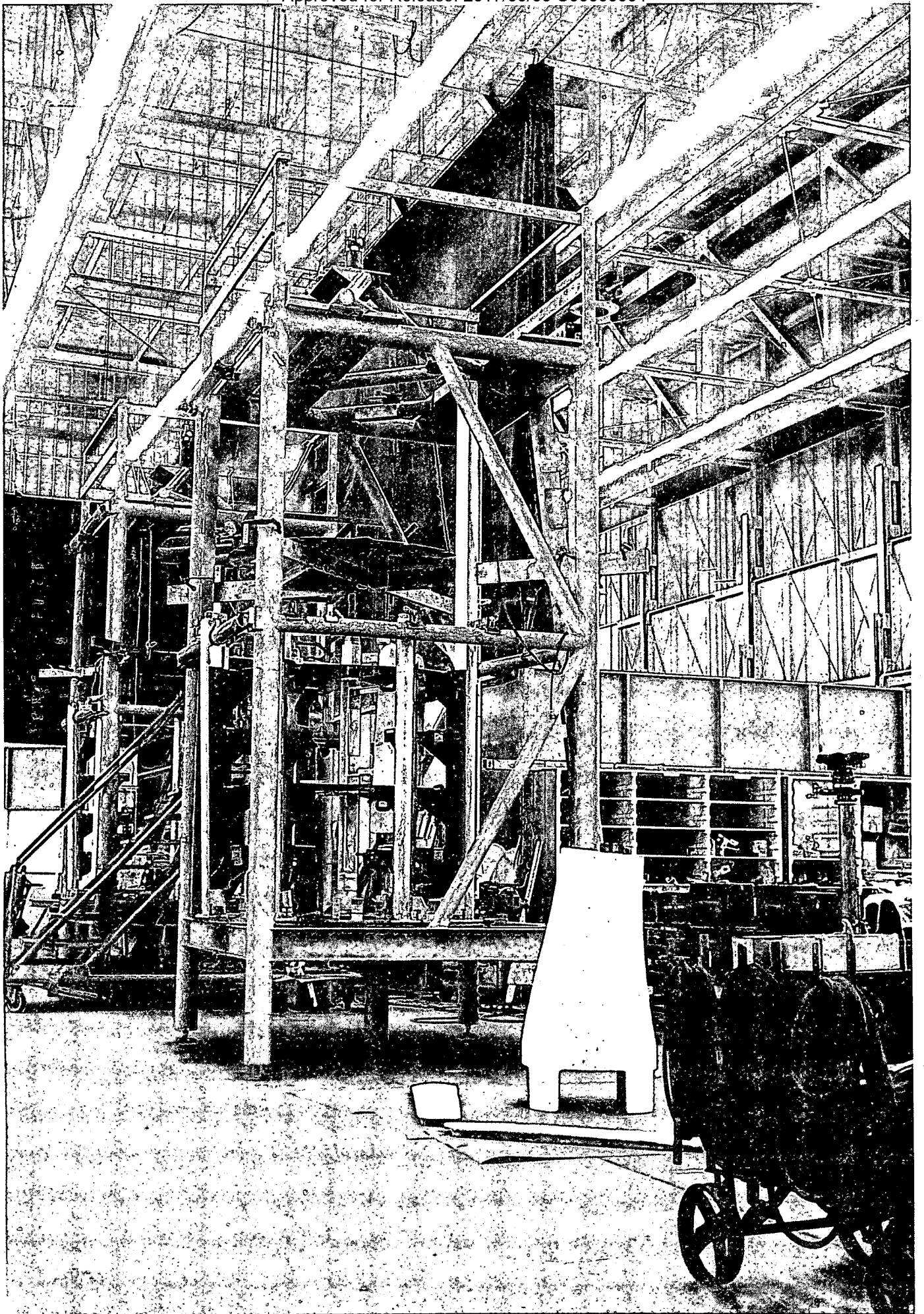


#1 L/H Wing Beams & Nacelle

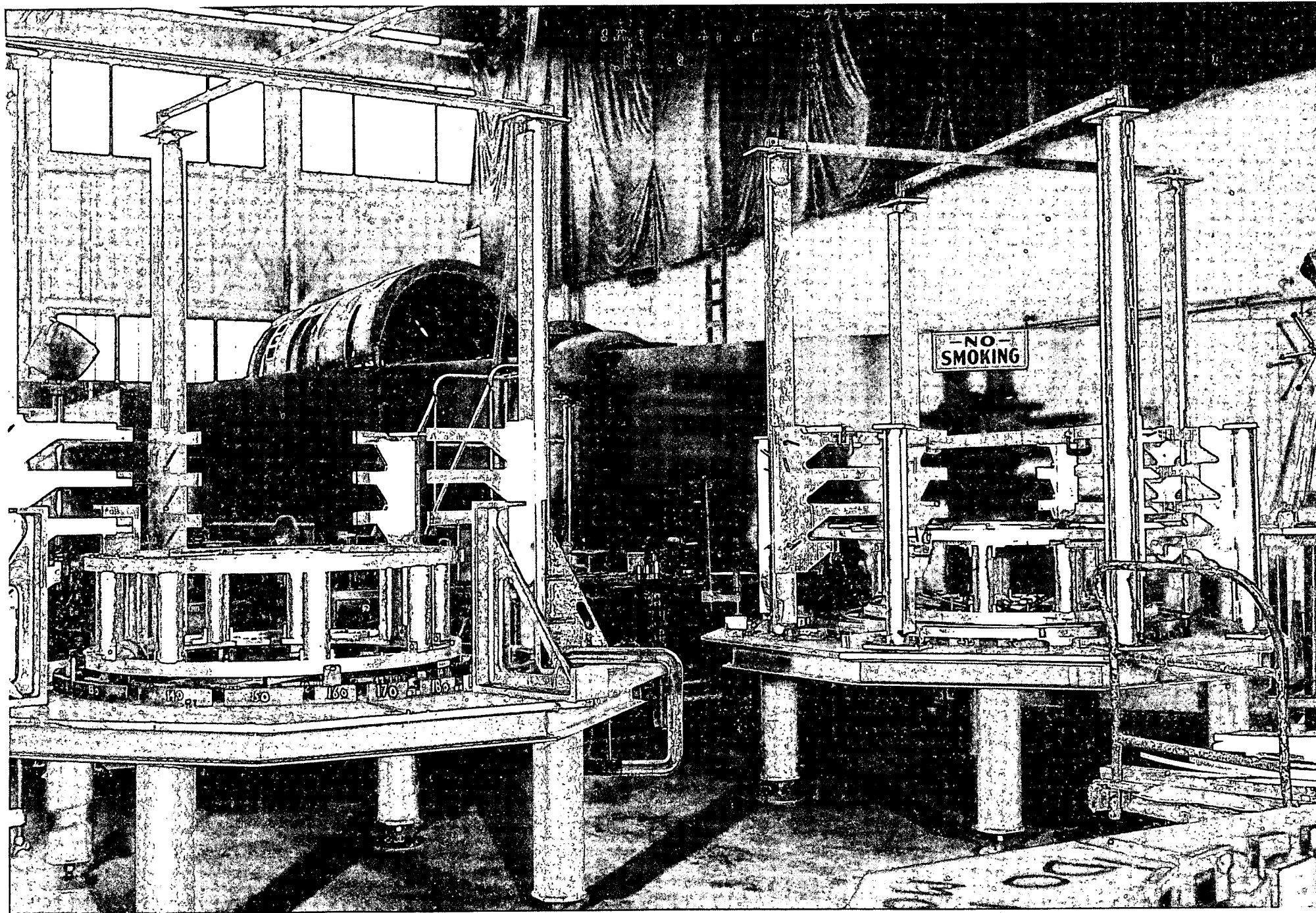


#1 R/H Wing Beams + Nacelle

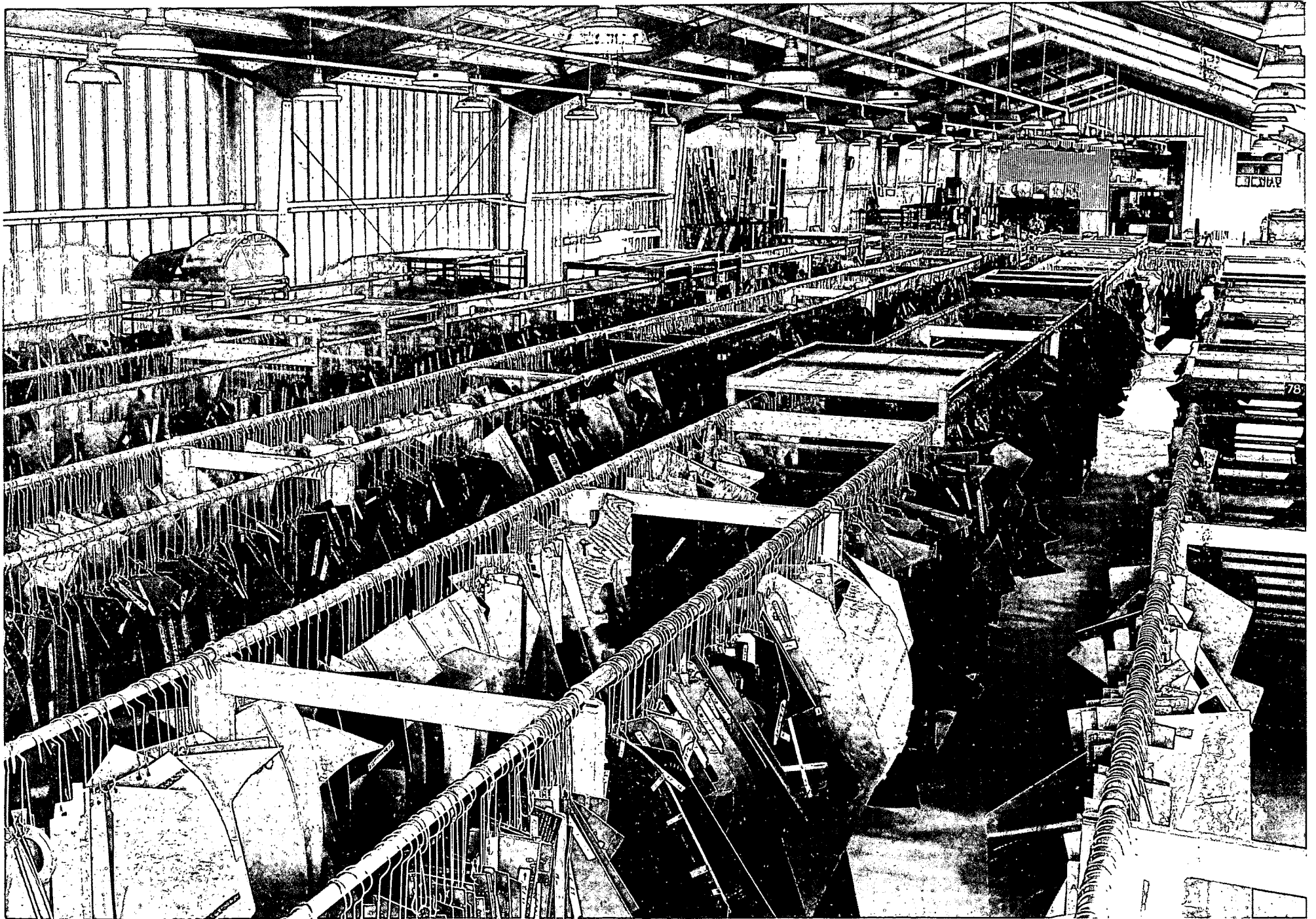




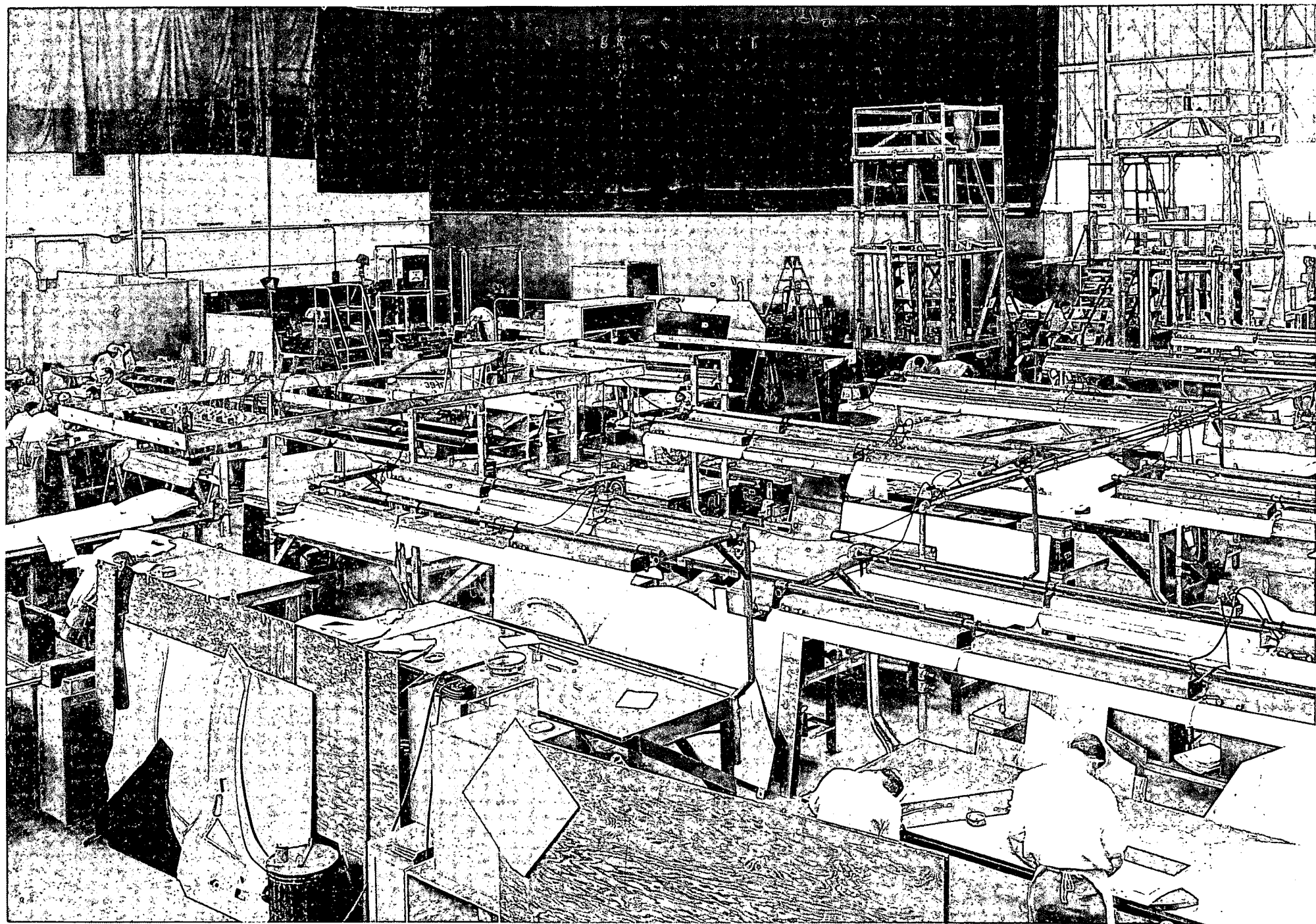




FWD Nacelle + Inlet 316

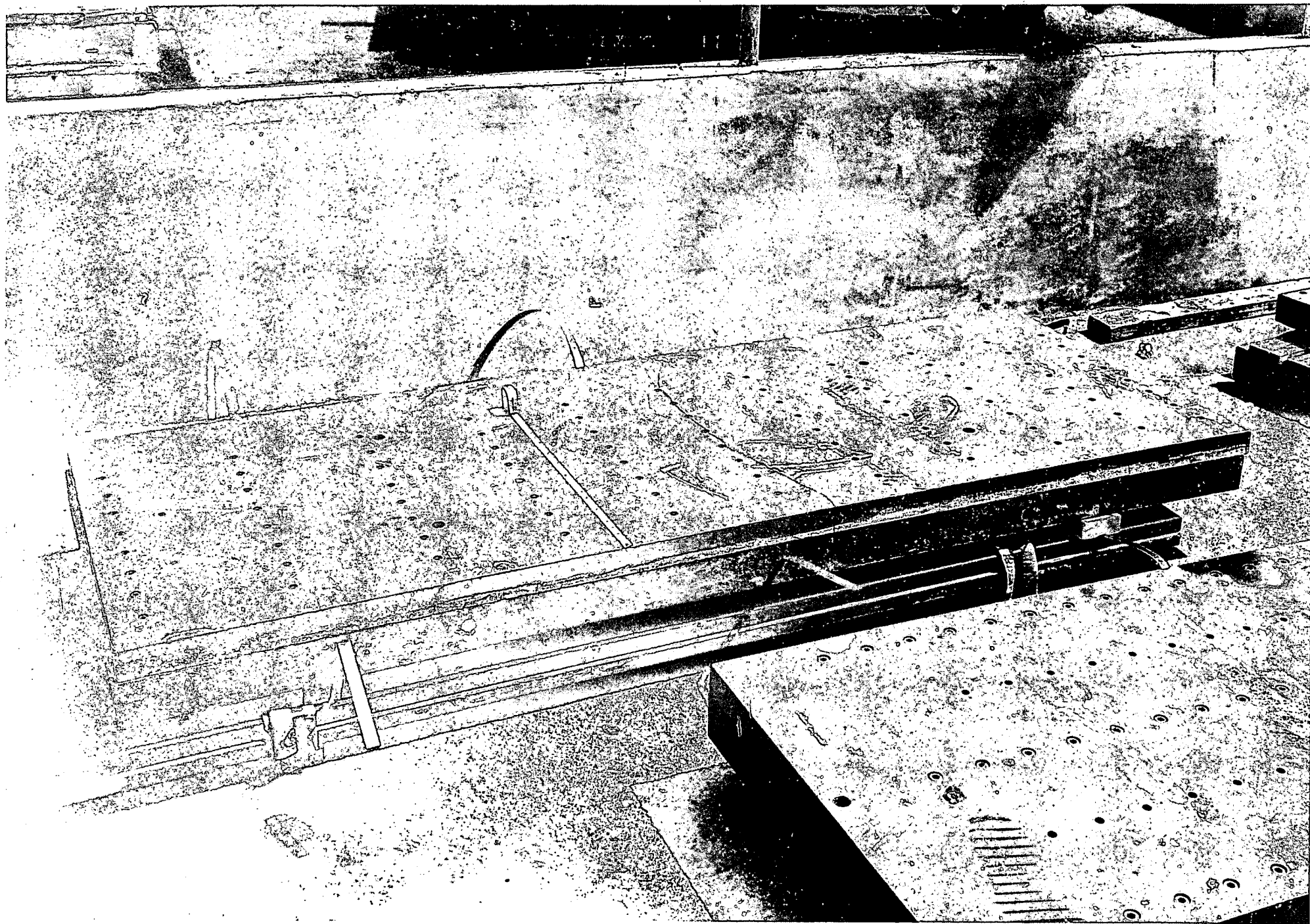






# Template Shop + Storage





Block Storage



Block Storage



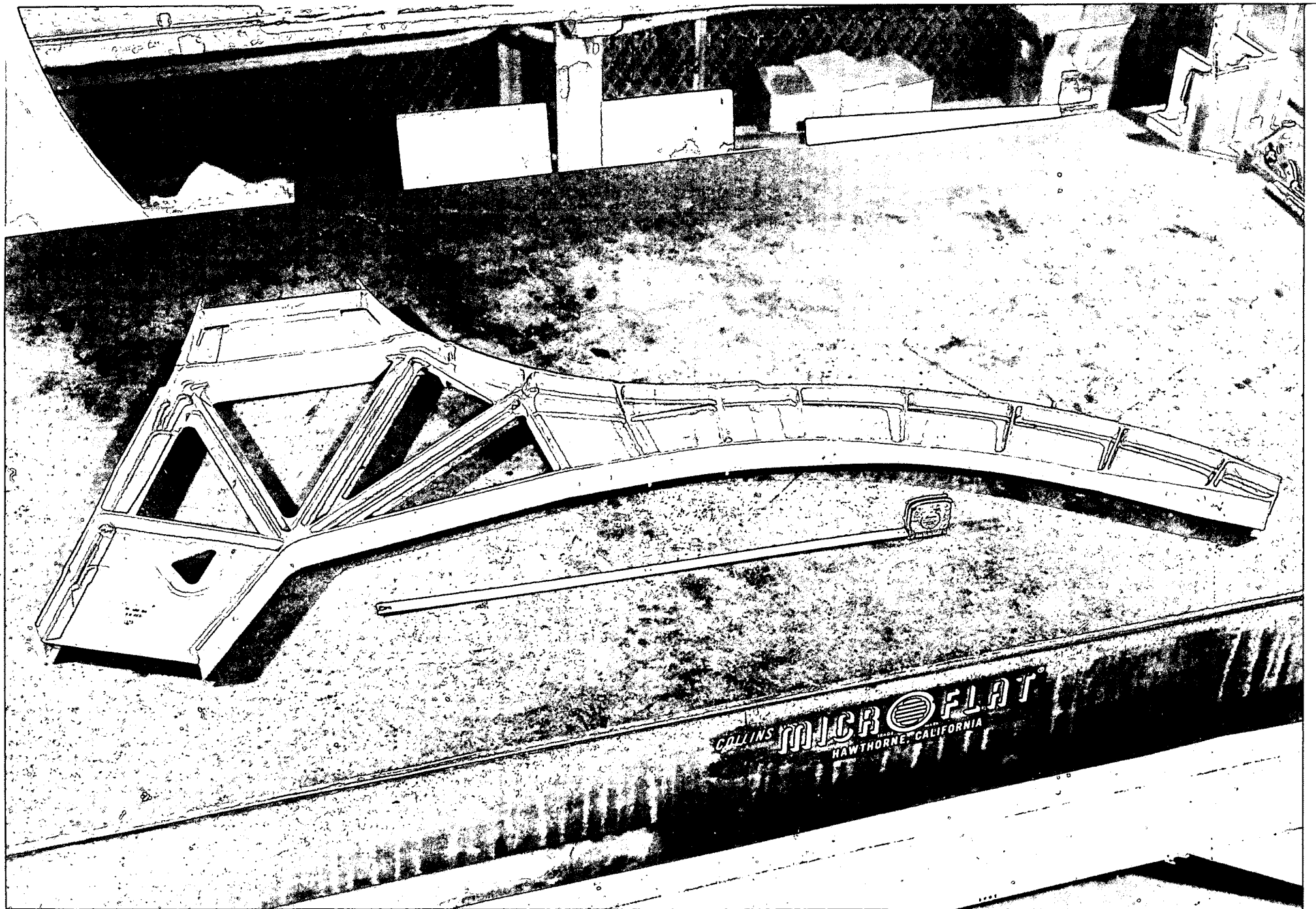
Block Storage



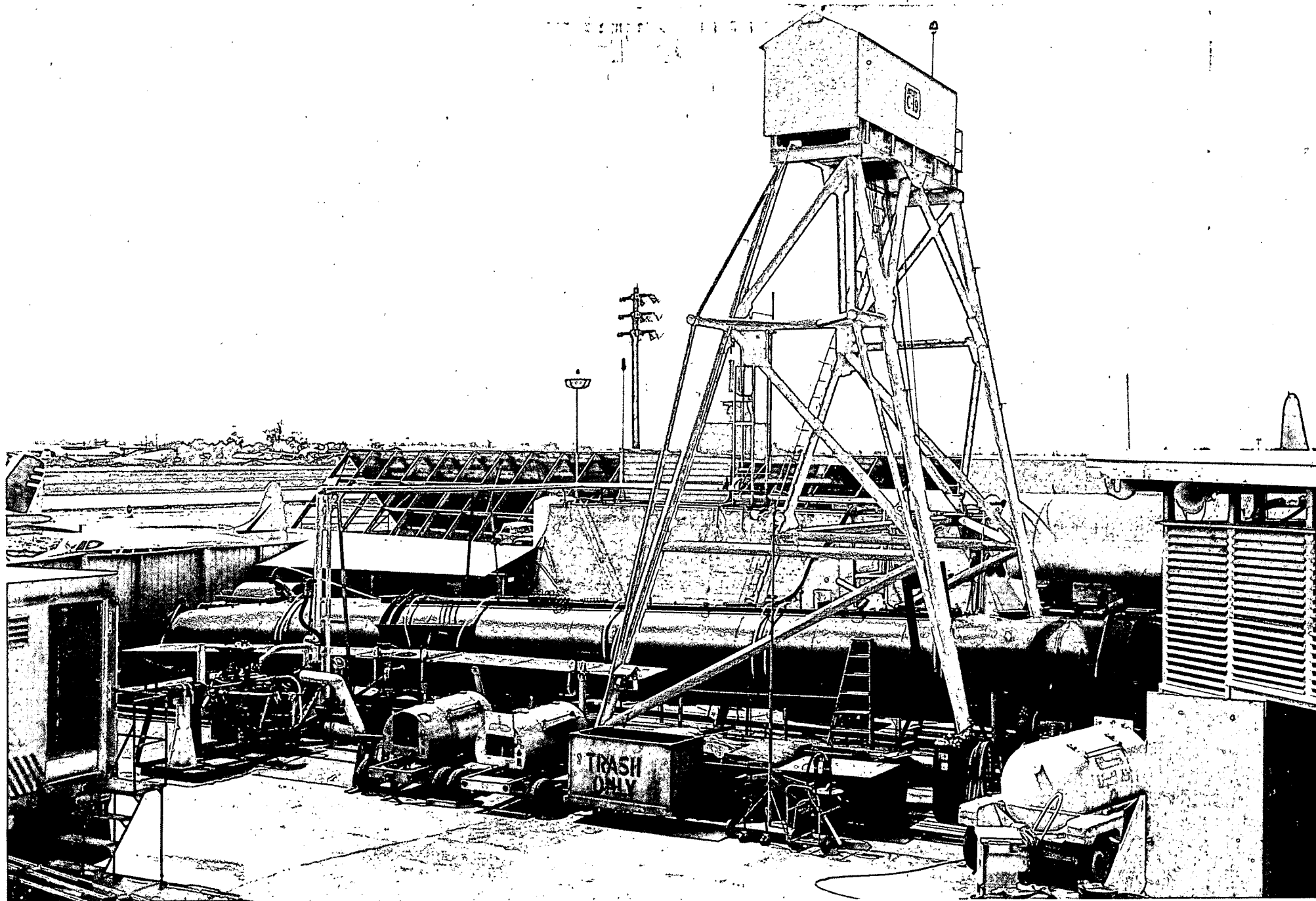
Block Storage

2

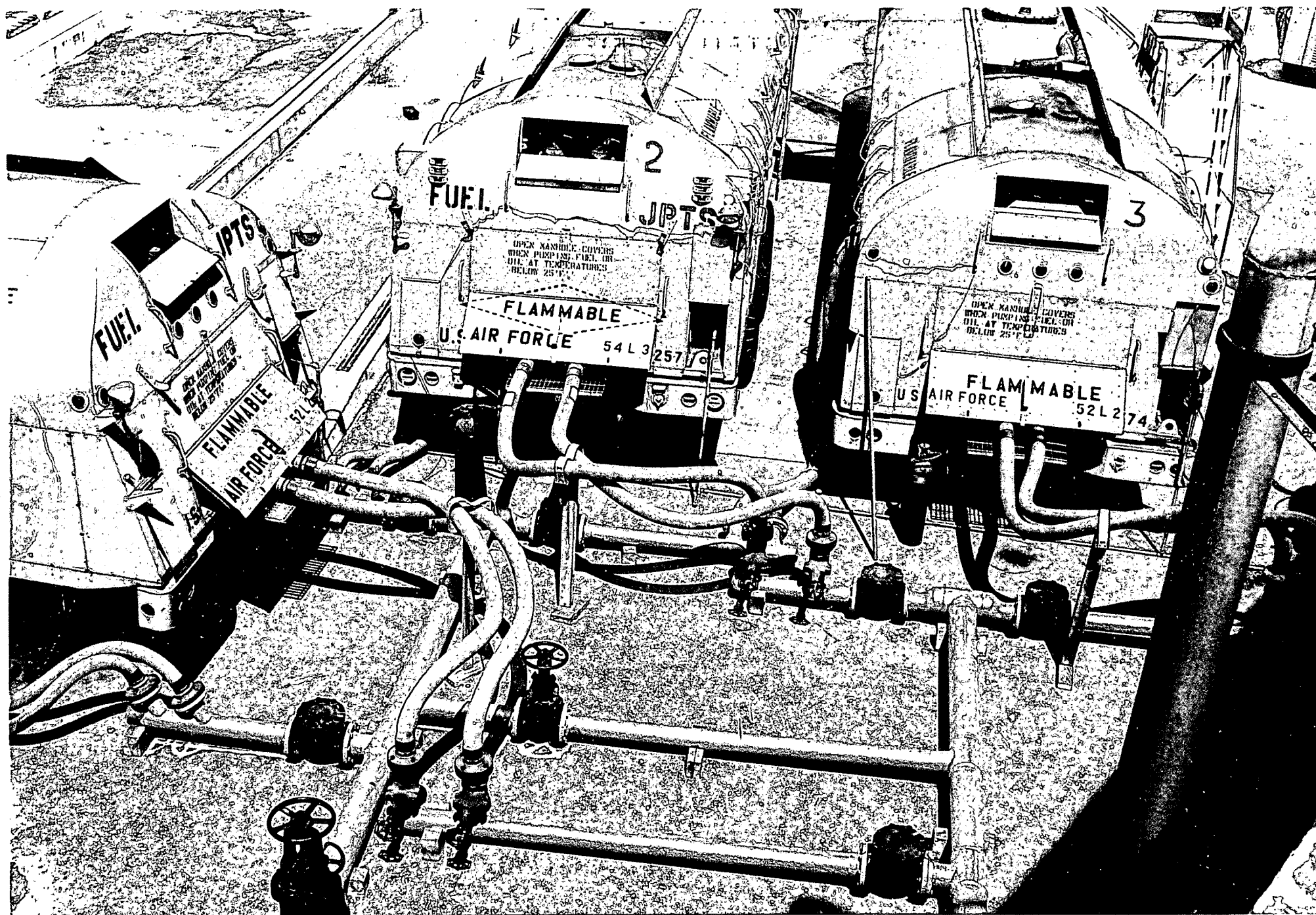




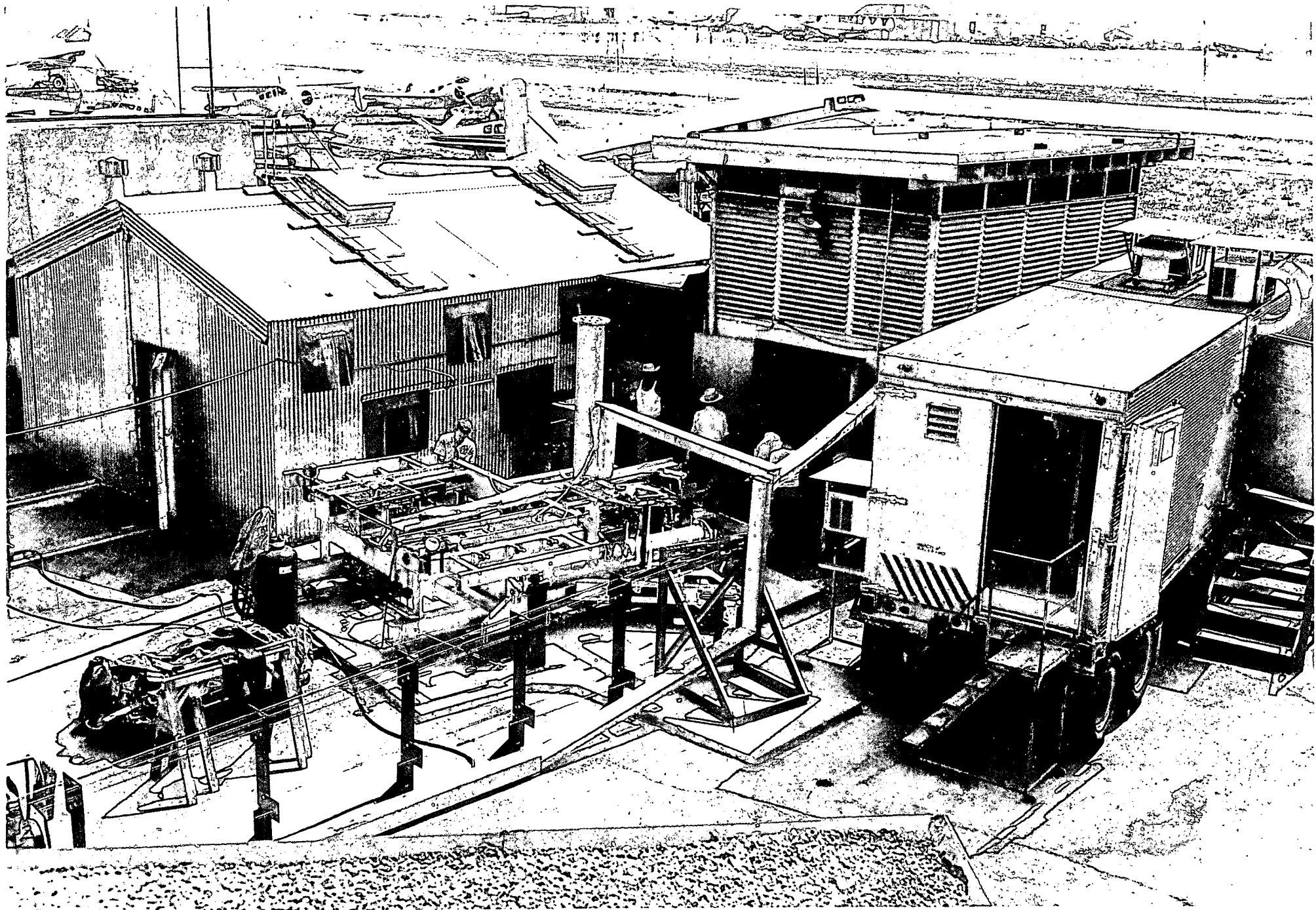






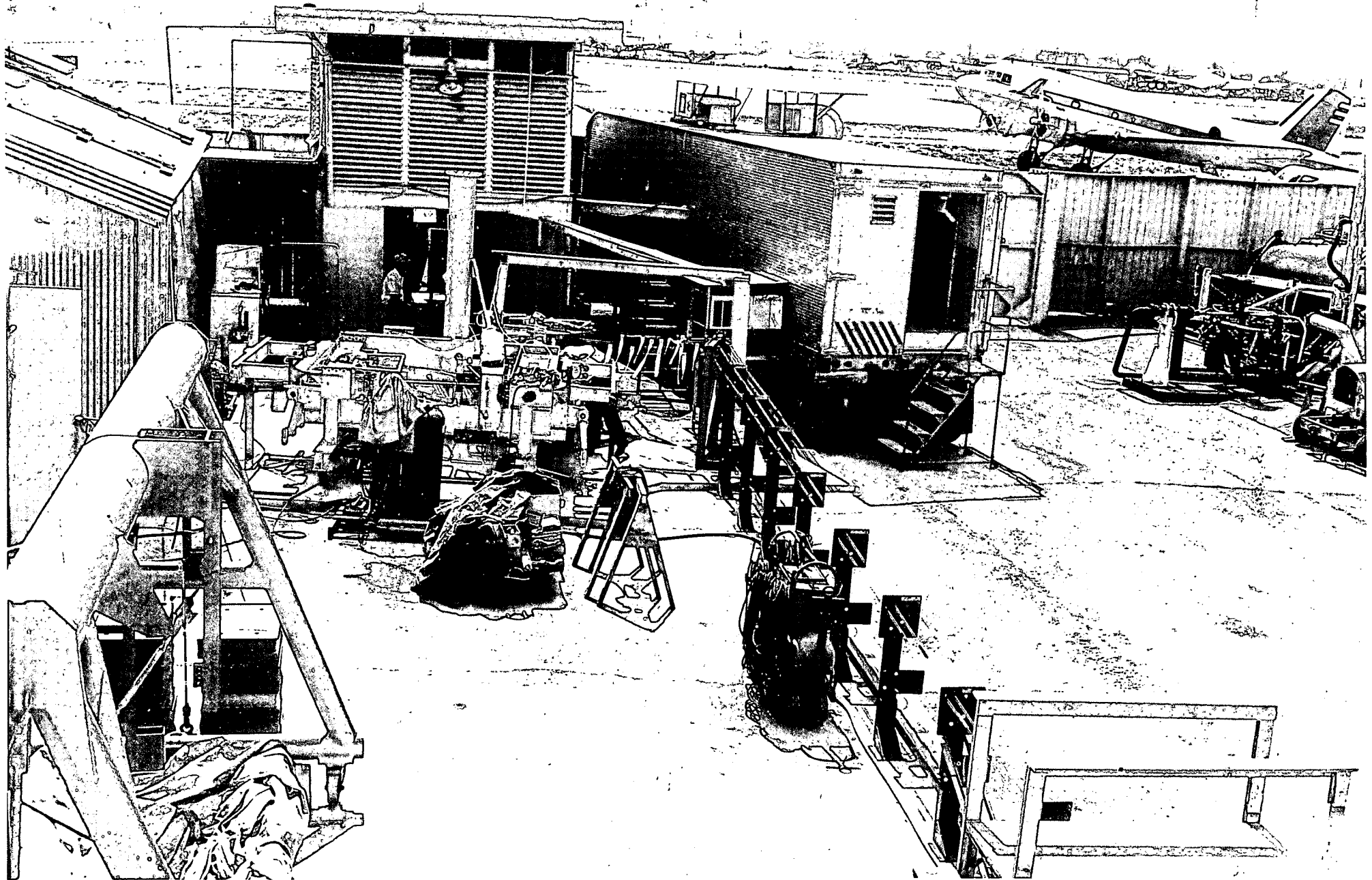


Fuel Test Rig - Form 1

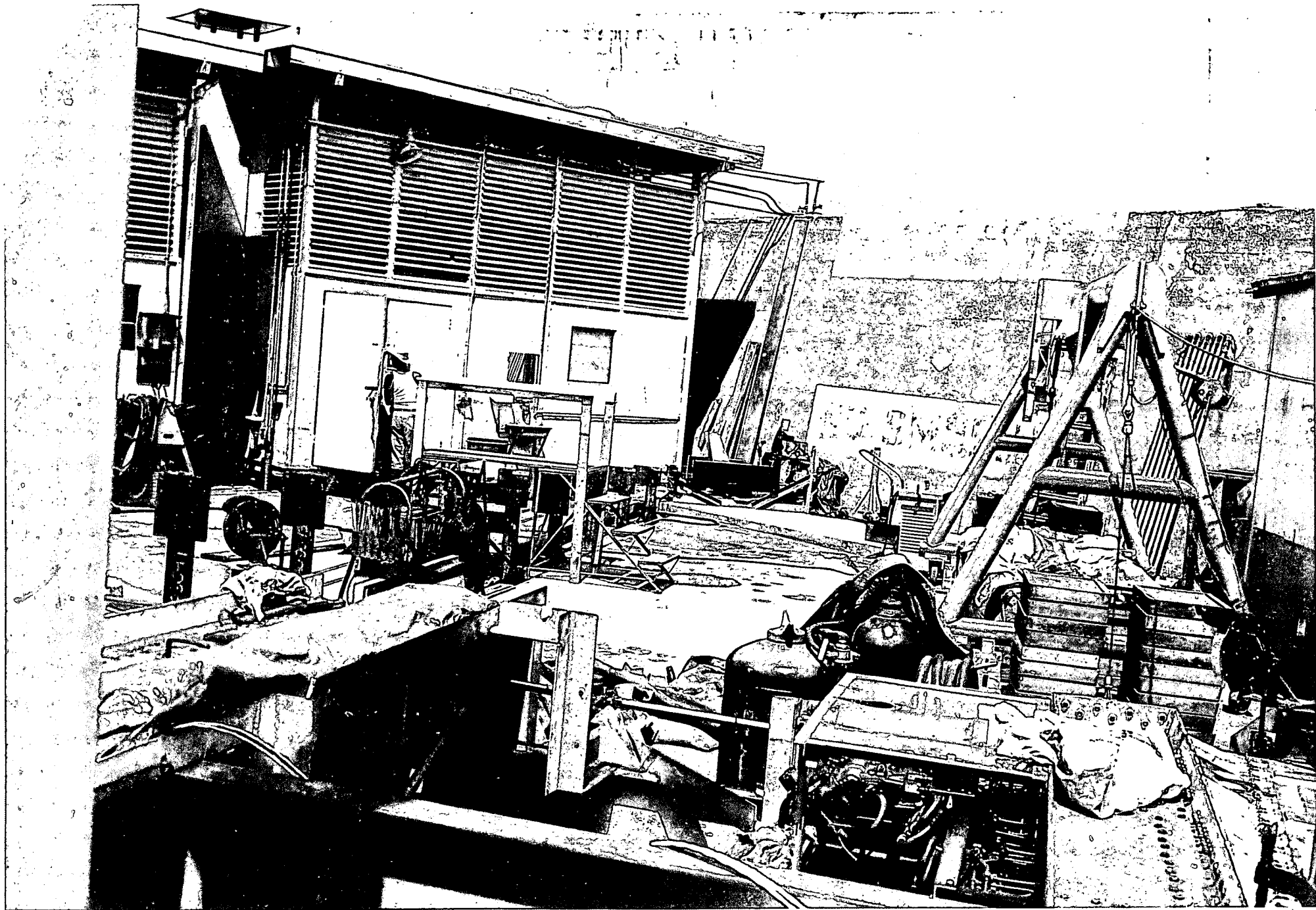




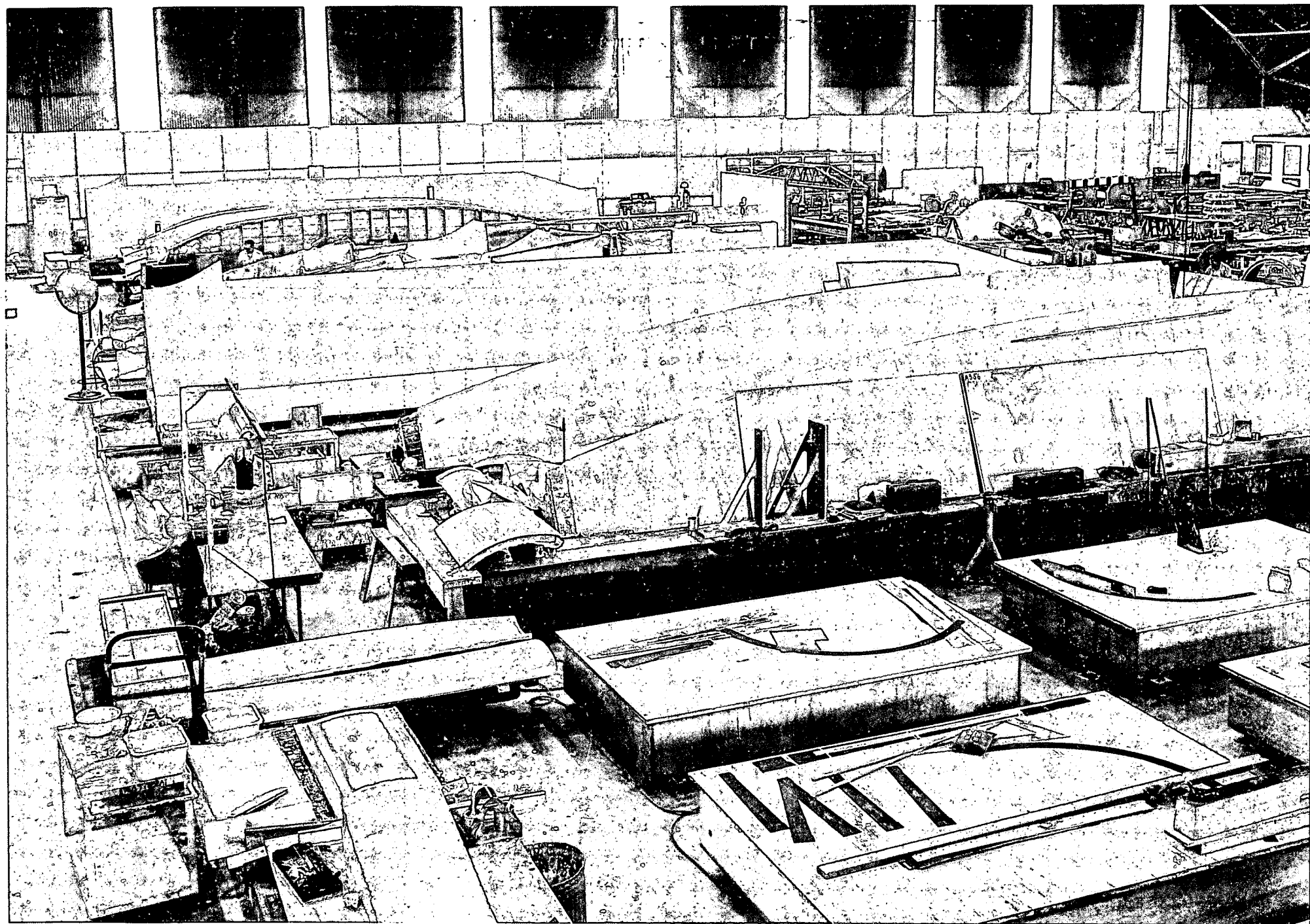




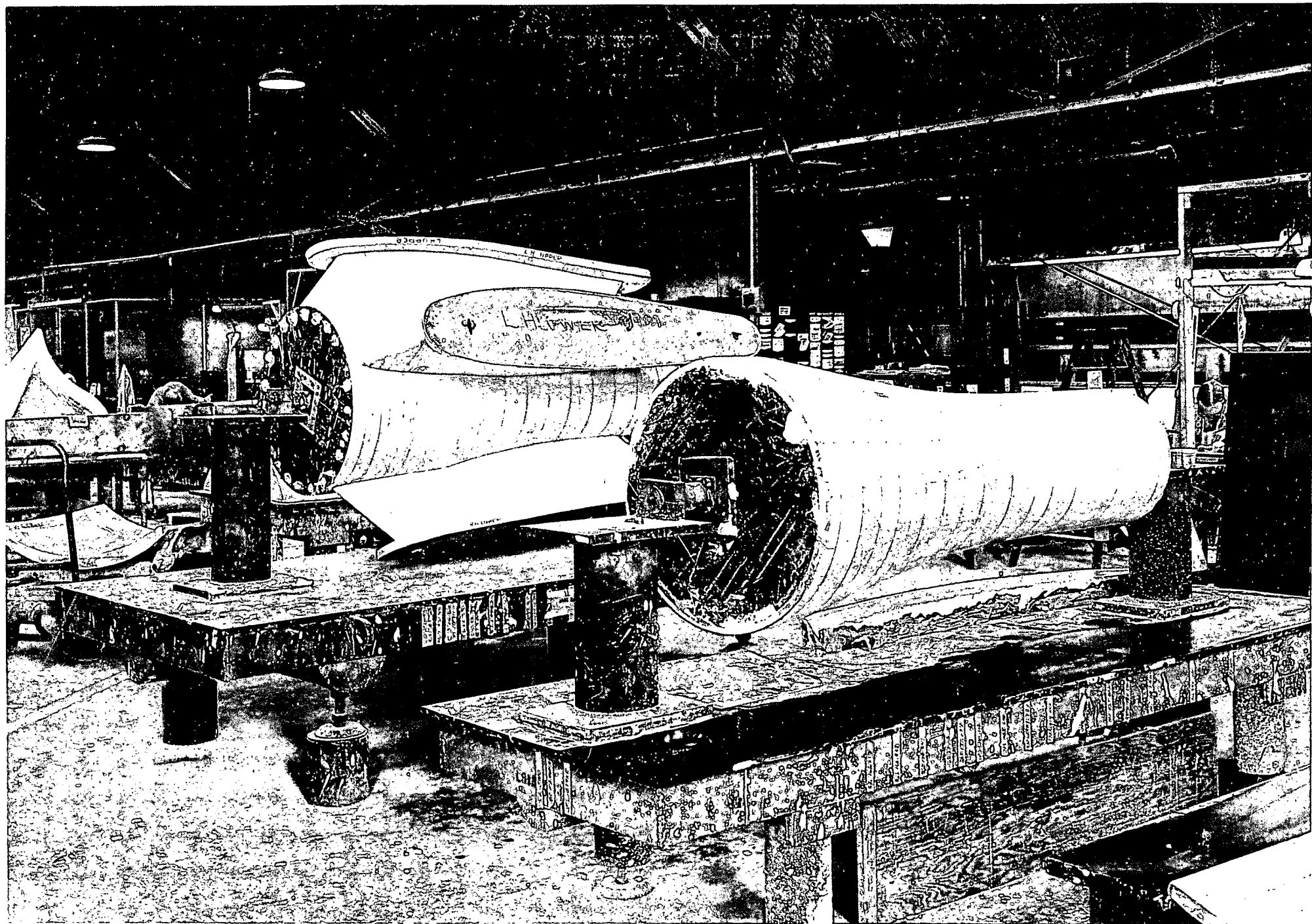




Oven + Flight ~~Simulation~~ +

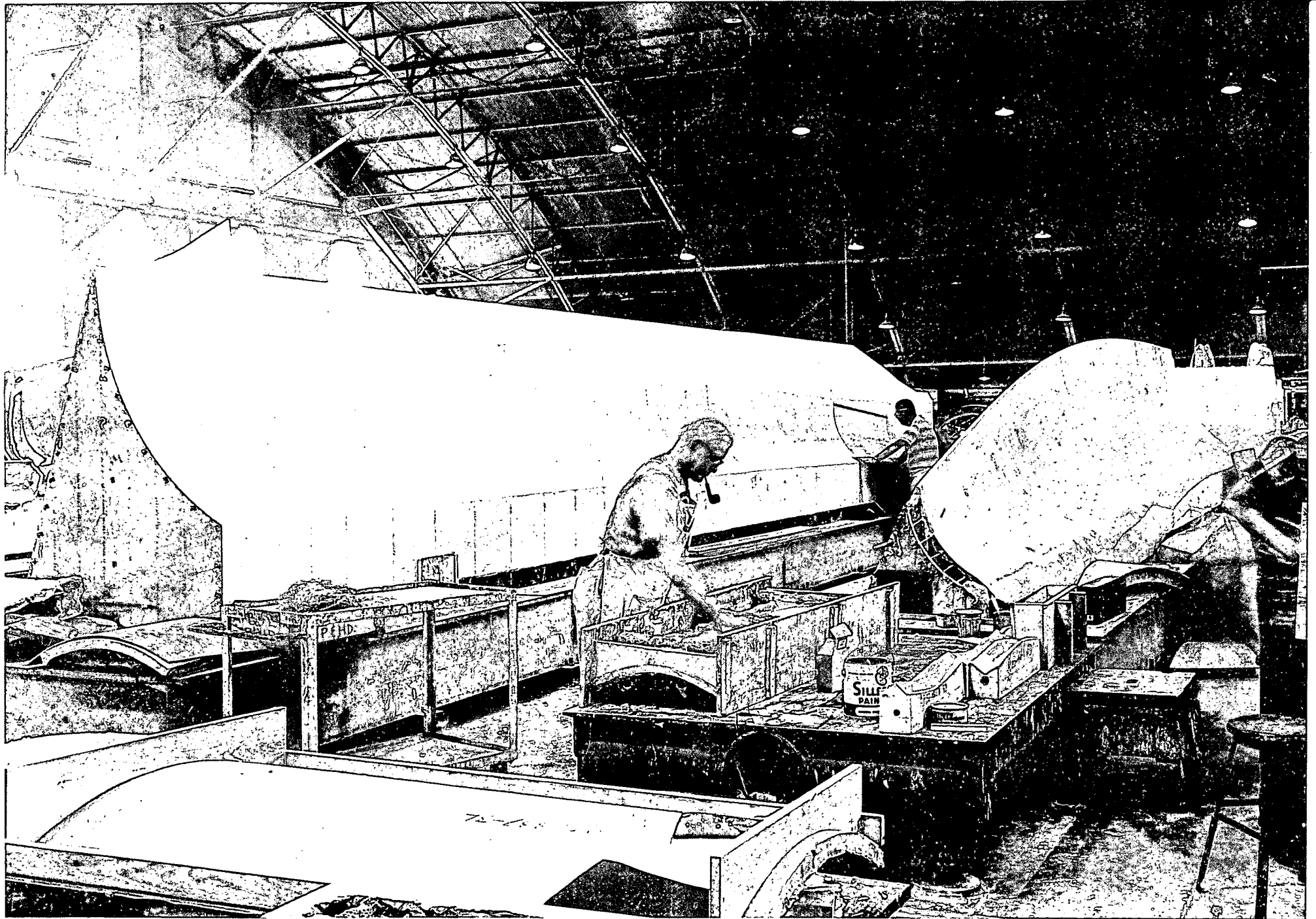


7 143127 - 110 P

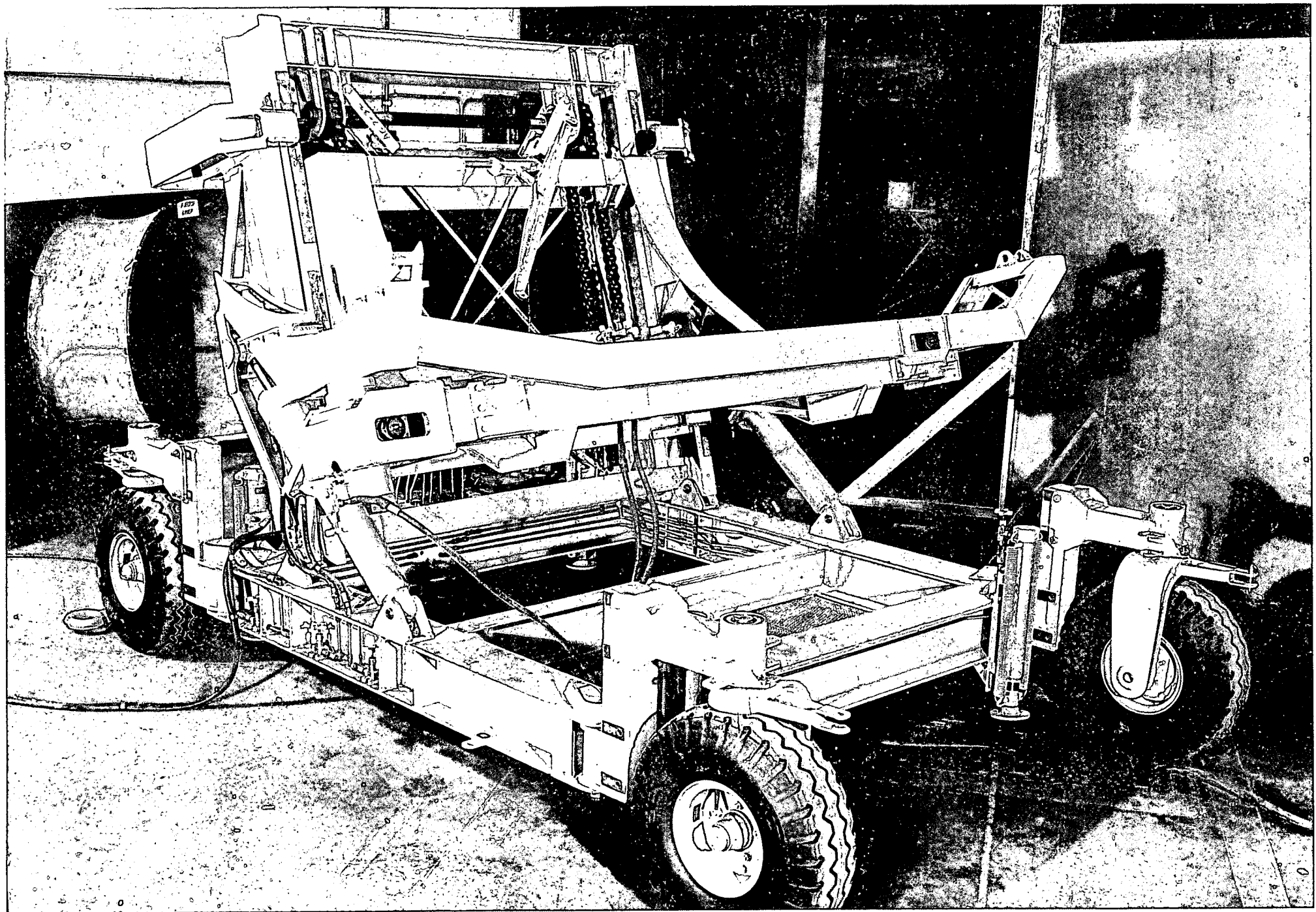


VICTOR S. ...



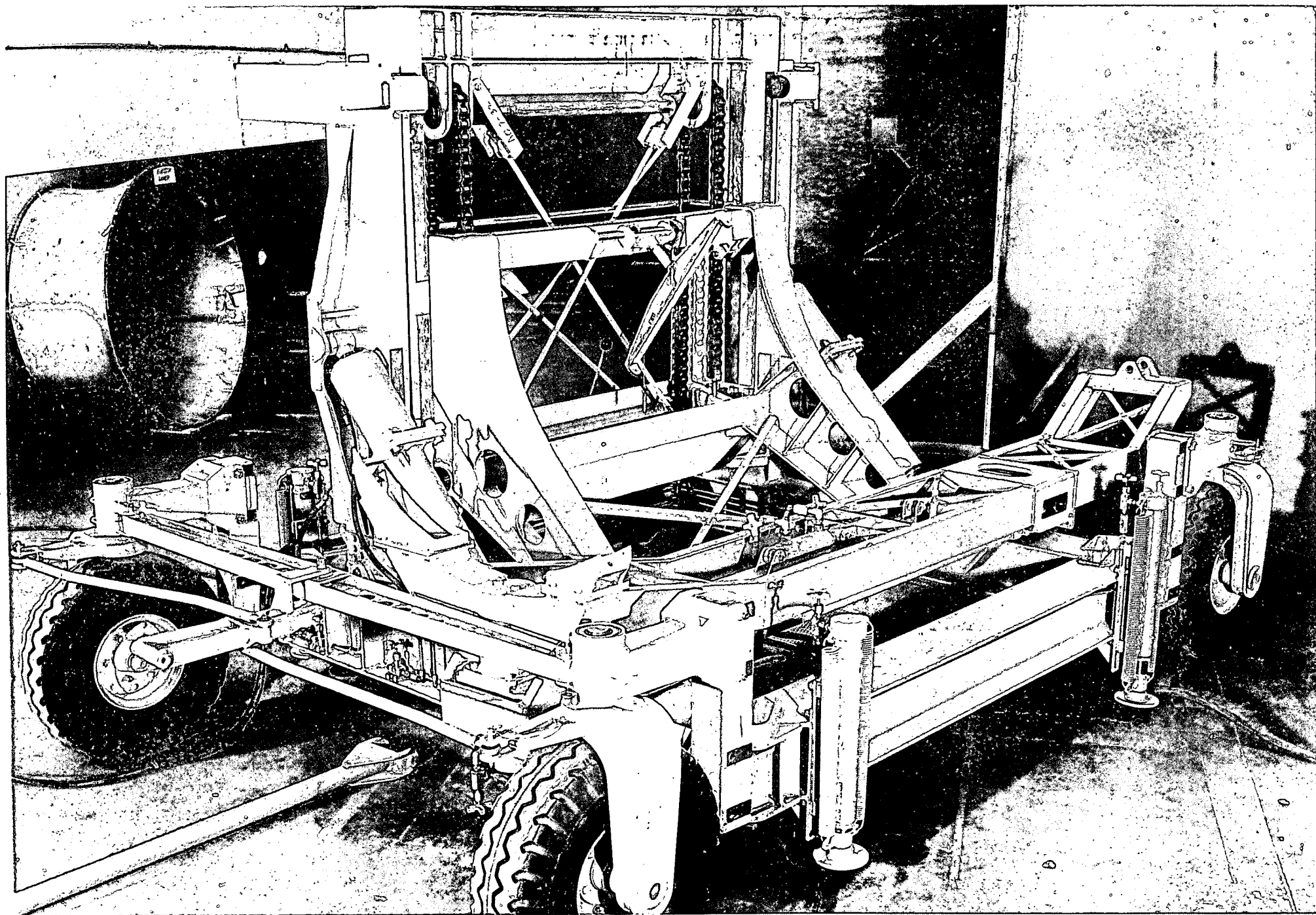


Plaster Shop

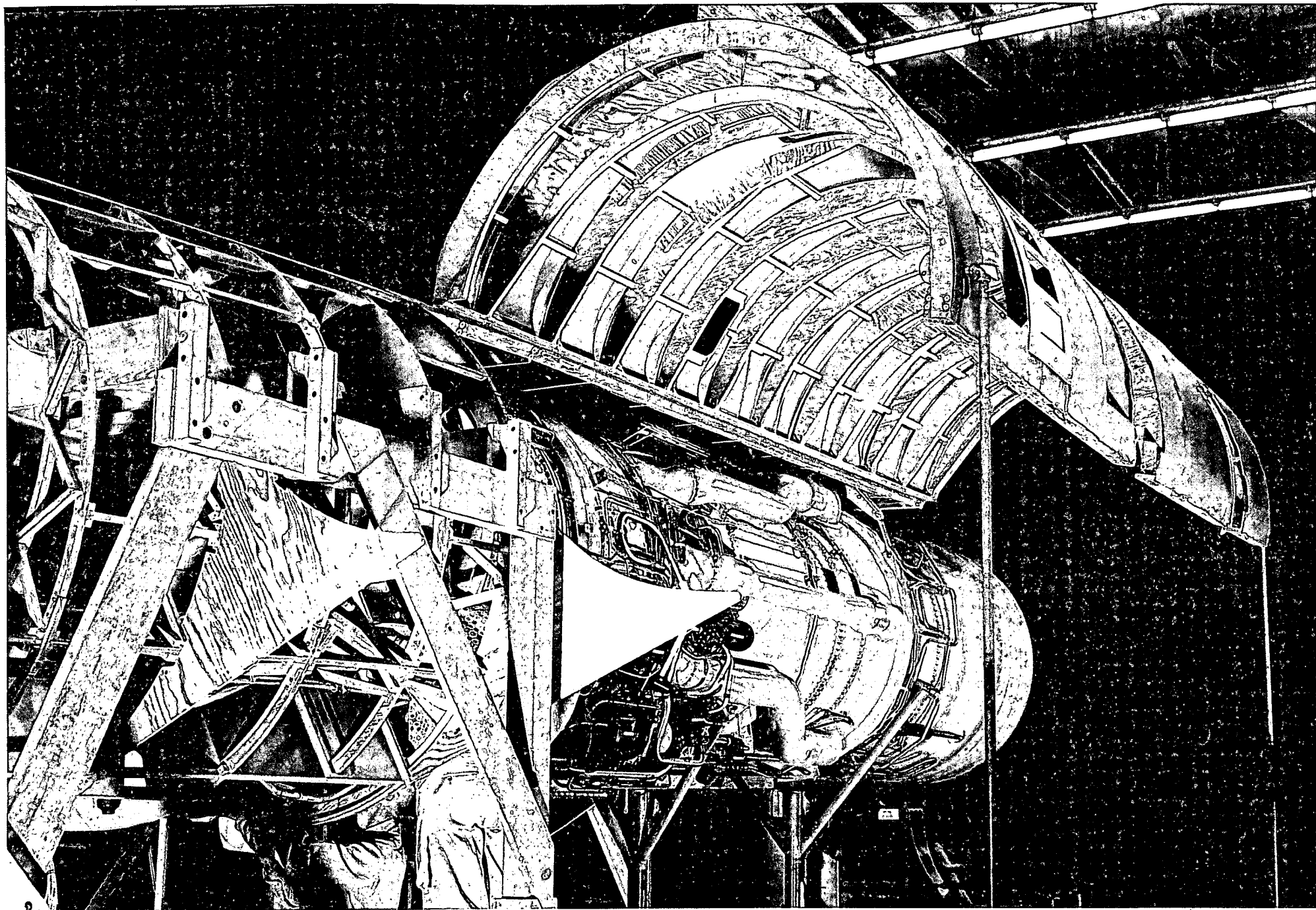


3

Approved for Release: 2017/08/30 C06636304  
Engine Ground Handling Equipment



Approved for Release: 2017/08/30 C06636304  
Engine Ground Handling Equipment



Engine Ground ~~in~~ Equipment