

Card Name	Difficulty	Political	UI	Military	Economic	Weapons	Points	Type
al-Qa'ida Leadership	9	P		M			3	
China Missile Testing	7			M		W	3	Missile
Iran Missile Testing	7			M		W	3	Missile
	6	P			E		3	
North Korea Nuclear Talks	7	P		M		W	3	Nuclear
Pakistan Nuclear Security	9	P		M		W	3	Nuclear
Taliban Resurgence	7	P		M	E		3	
<b>Total</b>		<b>5</b>		<b>6</b>	<b>2</b>	<b>4</b>		

(b)(1)

Afghanistan Opium Network	7	P		M	E		2	
	8	P				W	2	Nuclear
Caspian Energy Crisis	6	P		M	E		2	
India Missile Program	7			M		W	2	
Iraq Instability	8	P		M			2	
Israel Palestinian Conflict	7	P		M	E		2	
Russia Georgia Conflict	6	P		M			2	
Russia Military Sales	7	P		M	E	W	2	
	8			M		W	2	
Venezuela Foreign Policy	6	P			E		2	
<b>Total</b>		<b>8</b>		<b>8</b>	<b>5</b>	<b>4</b>		

(b)(1)

(b)(1)

Atrocities in Darfur	5	P		M			1	
Bolivia Economic Reform	4	P			E		1	
China Yuan Revaluation	5	P			E		1	
Europe Crime and Corruption	6	P			E		1	
G-8 Summit	4	P			E		1	
Global Warming Summit	3	P			E		1	
Indonesia Typhoon	4	P			E		1	
Iraq Oil Infrastructure	5			M	E		1	
	4	P					1	
Syria Chemical Weapon Training	8			M		W	1	Chemical
China Taiwan Posturing	5	P		M			1	
Weaponized UAV Proliferation	7			M	E	W	1	
Zimbabwe Unrest	4	P		M			1	
<b>Total</b>		<b>10</b>		<b>6</b>	<b>8</b>	<b>2</b>		

(b)(1)

**Totals**

**23      20      15      10**

Total cards

30

~~TOP SECRET~~



Card Name	Difficulty	Political	Military	Economic	Weapons	Points	Type
al-Qa'ida Leadership	9	P	M			3	
China Missile Testing	7		M		W	3	Missile
Iran Missile Testing	7		M		W	3	Missile
	6	P		E		3	
North Korea Nuclear Talks	7	P	M		W	3	Nuclear
Pakistan Nuclear Security	9	P	M		W	3	Nuclear
Taliban Resurgence	7	P	M	E		3	
Syria Political Unrest	5	P	M			3	
Russia Intelligence Activities	8	P	M			3	
China Cyber Warfare	8	P		E		3	
China Counterspace Capabilities	6		M		W	3	
Iran Chemical Weapon Program	8		M		W	3	Chemical
<b>Total</b>		<b>8</b>	<b>10</b>	<b>3</b>	<b>6</b>		

- 3 [Redacted]
- 3 Syria Political Unrest
- 3 Russia Intelligence Activities
- 3 China Cyber Warfare
- 3 China Counterspace Capabilities
- 3 Iran Chemical Weapon Program

(b)(1)  
(b)(1)

Afghanistan Opium Network	7	P	M	E		2	
	8	P			W	2	Nuclear
Caspian Energy Crisis	6	P	M	E		2	
India Missile Program	7		M		W	2	
Iraq Instability	8	P	M			2	
Israel Palestinian Conflict	7	P	M	E		2	
Russia Georgia Conflict	6	P	M			2	
Russia Military Sales	7	P	M	E	W	2	
	8		M		W	2	
Venezuela Foreign Policy	6	P		E		2	
Al-Shabaab Attacks in Kenya	5	P	M			2	
UAE Reform Crackdown	5	P	M			2	
Egypt Islamist Political Parties	4	P				2	
	5		M		W	2	Missile
Hizballah Weapon Acquisition	6		M	E		2	
Russia Nuclear Warhead Design	9		M		W	2	Nuclear
Kurd Activism in Turkey	4	P		E		2	
Russia Defense Reform	7	P	M		W	2	
<b>Total</b>		<b>13</b>	<b>14</b>	<b>7</b>	<b>7</b>		

- 2 Al-Shabaab Attacks in Kenya
- 2 UAE Reform Crackdown
- 2 Egyptian Islamist Political Parties
- 2 Brazil Economic Innovation
- 2 South Sudan Political Infrastructure
- 2 [Redacted]
- 2 South Korean Missile Program
- 2 India Nuclear Program
- 2 [Redacted]
- 2 Russia Nuclear Warhead Redesign
- 2 Hizballah Weapon Acquisition
- 2 Russia Defense Reform
- 2 Kurdish Activism in Turkey

(b)(1)  
(b)(1)  
(b)(1)  
(b)(1)

Atrocities in Darfur	5	P	M			1	
Bolivia Economic Reform	4	P		E		1	
China Yuan Revaluation	5	P		E		1	
Europe Crime and Corruption	6	P		E		1	
G-8 Summit	4	P		E		1	
Global Warming Summit	3	P		E		1	
Indonesia Typhoon	4	P		E		1	
Iraq Oil Infrastructure	5		M	E		1	
	4	P				1	
Syria Chemical Weapon Training	8		M		W	1	Chemical
China Taiwan Posturing	5	P	M			1	
Weaponized UAV Proliferation	7		M	E	W	1	
Zimbabwe Unrest	4	P	M			1	
	4	P		E		1	
	5	P		E		1	
Macedonia Ethnic Violence	3	P	M			1	
<b>Total</b>		<b>13</b>	<b>7</b>	<b>10</b>	<b>2</b>		
<b>Totals</b>		<b>34</b>	<b>31</b>	<b>20</b>	<b>15</b>		

- 1 ASEAN Summit
- 1 [Redacted]
- 1 Bulgaria Law Reforms
- 1 Cuba Privatization
- 1 [Redacted]
- 1 Macedonia Ethnic Violence
- 1 Arctic Territorial Claims
- 1 NATO Infighting

(b)(1)  
(b)(1)  
(b)(1)  
(b)(1)

Total cards 46

~~TOP SECRET~~

~~TOP SECRET~~

Card Name	Effect
Aggressive Counterintelligence	Counter a HUMINT collection technique
Persona Non-Grata	Counter a HUMINT collection technique
Misinformed Source	Counter a HUMINT collection technique
Encryption	Counter a SIGINT collection technique
Linguists Reassigned	Counter a SIGINT or OSINT collection technique
Bad Weather	Counter a GEOINT Technique
Satellite Warning	Counter a satellite-based GEOINT collection technique
Satellite Failure	Counter a satellite-based GEOINT or SIGINT collection technique
Ground Station Failure	Counter a satellite-based GEOINT or SIGINT collection technique
Corrupt Signature Database	Counter a MASINT collection technique
Disinformation Campaign	Counter an OSINT collection technique
Customer Bias	Counter an OSINT collection technique
Media Blackout	Counter an OSINT collection technique
Compartmented	Counter a non-OSINT collection technique
Denial and Deception	Counter a non-MASINT collection technique
No Exploitation Resources	Counter any collection technique
Competition	Counter any collection technique
Red Tape	Counter any collection technique
Internal Politics	Counter any collection technique
Hard Target	Increase difficulty of problem by 1
Hard Target	Increase difficulty of problem by 1
Soft Target	Decrease difficulty of problem by 1
Soft Target	Decrease difficulty of problem by 1
Really Hard Target	Increase difficulty of problem by 2
Really Soft Target	Decrease difficulty of problem by 2
Provide Feedback	Expand a collection technnique's spectrum by 1
Rotation to a Collector	Expand a collection technnique's spectrum by 1
Update Intelligence Requirements	Expand a collection technnique's spectrum by 1
Coordinate Requirements Across IC	Expand a collection technnique's spectrum by 1
Working Group Meeting	Expand a collection technnique's spectrum by 1
Provide Targeting Help	Expand a collection technnique's spectrum by 1
Provide Funding to a Collector	Expand a collection technnique's spectrum by 1
Support from IC Leadership	Expand a collection technnique's spectrum by 1
Good Justification	Expand a collection technnique's spectrum by 1
Leverage Personal Relationship	Expand a collection technnique's spectrum by 1
Think Outside the Box	Counter any other Reality Check card except Collection Manager Challenge
Think Outside the Box	Counter any other Reality Check card except Collection Manager Challenge
Think Outside the Box	Counter any other Reality Check card except Collection Manager Challenge
Think Outside the Box	Counter any other Reality Check card except Collection Manager Challenge
Think Outside the Box	Counter any other Reality Check card except Collection Manager Challenge
Think Outside the Box	Counter any other Reality Check card except Collection Manager Challenge
Think Outside the Box	Counter any other Reality Check card except Collection Manager Challenge
Collection Management Challenge	Player must explain how the technique would be used against the problem
Collection Management Challenge	Player must explain how the technique would be used against the problem
Collection Management Challenge	Player must explain how the technique would be used against the problem
Collection Management Challenge	Player must explain how the technique would be used against the problem
Collection Management Challenge	Player must explain how the technique would be used against the problem
Collection Management Challenge	Player must explain how the technique would be used against the problem
Collection Management Challenge	Player must explain how the technique would be used against the problem
Collection Management Challenge	Player must explain how the technique would be used against the problem
Collection Management Challenge	Player must explain how the technique would be used against the problem
Collection Management Challenge	Player must explain how the technique would be used against the problem
Total	

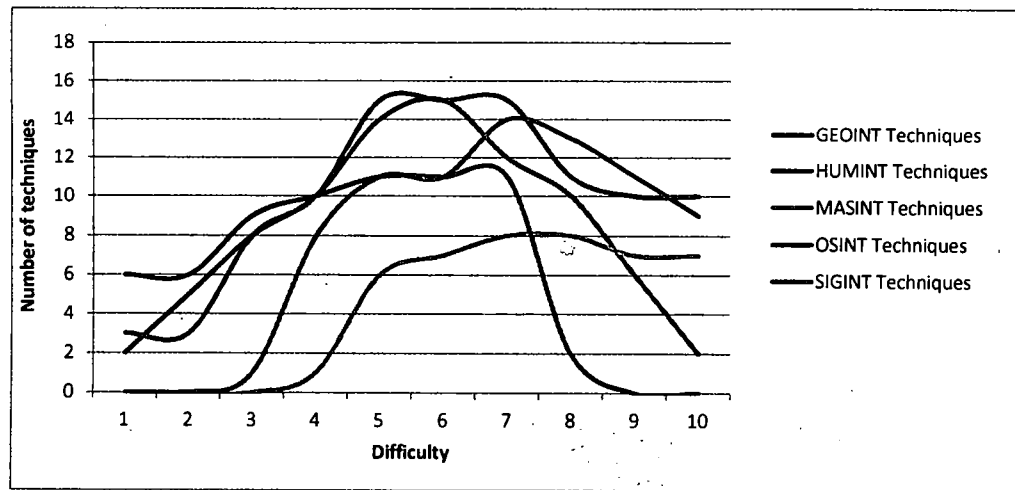
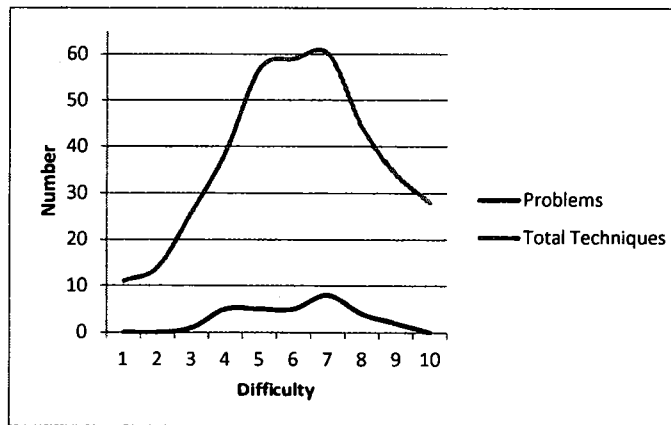
~~TOP SECRET~~

~~TOP SECRET~~

Difficulty	Problems	GEOINT Techniques	HUMINT Techniques	MASINT Techniques	OSINT Techniques	SIGINT Techniques	Total Techniques	% of Techniques
1	0	3	2	0	6	0	11	17%
2	0	3	5	0	6	0	14	22%
3	1	8	8	0	9	1	26	40%
4	5	10	10	1	10	8	39	60%
5	5	15	14	6	11	11	57	88%
6	5	15	15	7	11	11	59	91%
7	8	15	12	8	11	14	60	92%
8	4	11	10	8	2	13	44	68%
9	2	10	6	7	0	11	34	52%
10	0	10	2	7	0	9	28	43%
<b>Total</b>	<b>30</b>							

Aspect	Matching Techniques	Matching Problems	Ratio
P	37	23	1.61
M	53	20	2.65
E	32	15	2.13
W	49	10	4.90

Discipline	# Techniques
GEOINT	15
HUMINT	17
MASINT	8
OSINT	11
SIGINT	14
<b>Total</b>	<b>65</b>



~~TOP SECRET~~