

BEST AVAILABLE COPY

SECRET
XX-5066
182

30 January 1945

MICROFILMED
FEB 19 1965
DOC MICROFILM

To: Saint, Washington
From: Saint, London 28027
Subj: Japanese Intelligence Activities in Scandinavia

Indexed and

There is enclosed a British report covering Japanese Intelligence Activities in Scandinavia. A copy of this report has been forwarded to Limit.

Check

It would be appreciated if you will forward to this office any additional information which you may have concerning the operations of Japanese intelligence organizations in Scandinavia.

Distribution
v/h8
File

INDEX

SECRET

- EXEMPTIONS Section 3(b)
- (2)(A) Privacy
 - (2)(B) Methods/Sources
 - (2)(G) Foreign Relations

Declassified and Approved for Release
by the Central Intelligence Agency
Date: 2001, 2005

ET
44 P. 100

14 P

REPORT OF JAPANESE INTELLIGENCE ACTIVITIES IN SCANDINAVIA.

A. Background.

1. There are certain basic factors that sharply differentiate Japanese Intelligence activities in Europe from their German counterpart. They may be roughly summarized as follows:-

- 1) There is practically no indigenous or permanently resident Japanese population in Europe,
- 2) Almost every Japanese in Europe is now engaged in some form of intelligence work, and
- 3) The great majority of these persons are provided with diplomatic or official cover for their activities.

2. The Japanese in Europe are having to operate out of their element, and the fact of their only having a floating population deprives them of the normal entree that European nations have into each other's society. The racial distinction between Western and Oriental is constantly working to their disadvantage. In Sweden the lack of natural contacts and easily accessible sources has been somewhat aggravated by their having endeavoured to build up a substantial espionage organisation covering a very wide field in a short space of time.

3. Most of the Japanese who were previously to be found in Europe were sent there on some commercial, diplomatic, or journalistic, etc. mission, more or less under the auspices of the Japanese Government. Even before the European war there is little doubt that a great many of these persons were actively collecting intelligence, although probably from more or less overt sources. Consequently, only a small amount of re-organisation was necessary at the outbreak of hostilities to place all these activities on a wartime footing and to co-ordinate them under central Government control. Owing to these widespread espionage activities, the Japanese citizen has come to be regarded with even more suspicion than his merely being an Oriental warrants. Although the lavish use of diplomatic cover has given the Japanese considerable immunity, it has not detracted any suspicion from their persons, in fact, the opposite has been the case. Although most belligerents use some form of cover for counter-espionage services, etc., none are so open about it as the Japanese, whose sometimes the minister himself has been engaged in secret intelligence work.

4. Prior to the outbreak of the Far Eastern War neither Sweden nor any of the Scandinavian countries was of any particular interest to the Japanese from the intelligence point of view, as up to that time they were able to operate with but little restriction in the capitals of their future enemies. There was sufficient intelligence of interest to Tokio to be derived from Sweden itself at this time to warrant a small staff, but the country was never used as a base for operations against other countries. Only when

2nd
XAR2-14627
11 Nov 47

the Japanese were denied direct access to Great Britain and the U.S.A. and subsequently most of South America, did they begin to concentrate on the neutral countries of Europe as the natural bases for espionage against their two principal enemies. In the early days of Japan's belligerency Finland was probably of greater importance in their eyes than Sweden, owing partly to the close liaison they maintained with the Finns, (possibly attributable to a supposed anthropological relationship between the two nations), and partly to the fact that Finland was able to supply high grade intelligence relating to Russia, about whom Japan showed, and continues to show, considerable concern. Although this type of intelligence and close liaison with Finnish representatives abroad continues to be of great importance to Japan, Finland herself ceased to be of such value as a base after her entry into the war on the side of Germany.

5. In 1940 and 1941 intelligence activities in Sweden were directed by the Japanese Military Attache, General OKUYAMA Makoto, and his then assistant, HIGUCHI Fumakichi. They were aided in the collection of material by the "Domei" and "Asahi" and other Japanese correspondents.

6. The first outward indications of Sweden's growing importance in Japanese eyes were the establishment in May 1942 of a Naval Attache's office in Stockholm, headed by LIISHIMA Iori formerly at Vichy, and the appointment of further assistants to the Military Attache's office. In December 1942 OKAMOTO Susumu arrived to fill the vacant post of Minister and an over-all impetus was given to intelligence activities from then on. The Naval Attache gradually acquired additions to his staff, the majority of whom were ex-employees of the Japanese shipping companies, MIYOSHI, MITSUBISHI, etc., who had been stationed in Europe and had some knowledge of Allied shipping problems, etc.

7. By the beginning of 1944 a sizable organization, all technically under the direction of the Military Attache, had been built up in Stockholm. This expansion was not entirely due to events which took place within Scandinavia. Early in 1943 the Japanese Government had come to consider their position in Portugal, Spain and Turkey as insecure, and feared that they might be expelled from any or all of these countries. Preparations to meet any such contingency were therefore made and Switzerland and Sweden were chosen as safe bases, and of those two countries Sweden was the only one with maritime connections. The accent on Sweden was considerably strengthened late in 1944 when the Japanese Government foresaw the possibility of German defeat and was laying plans for the continuation of the Japanese intelligence organizations in Europe after a European peace. Arrangements were, consequently, made to evacuate some of their more important personnel, especially technicians, from Berlin to Sweden or Switzerland before the collapse of Germany, as it was thought visas might be refused, were a sudden transfer of personnel en bloc to be made at the cessation of hostilities in Europe, thus leaving their most important representatives in Europe at the mercy of the Allies.

8. Outward evidence of these preparations was provided by the large flow of important Japanese representatives to and from Stockholm in the course of 1944. When the question of evacuation becomes urgent and in view of the suspicion that a sudden increase

/s/.....

in diplomatic staff would arouse, it is indeed probable that the Japanese Intelligence directors in Stockholm will arrange for many of the younger members of the evacuee staffs to obtain entry into the country as newspaper correspondents, student technicians, etc., naturally with official recommendation. With regard to the problem of evacuation, much depends upon Russia's attitude. Should Russia refuse transit through her territory for all Japanese, the situation will become well nigh hopeless. Again, should the Russians refuse transit to all but fully accredited diplomats and service attaches, a large number of their most important personnel would remain in Europe and their accommodation in Switzerland, Sweden, and Iberia would be of paramount importance for the Japanese.

9. There is no indication that the Japanese intend to abandon their now well-established position in Sweden; in fact, the opposite is true. Efforts are doubtless being made to replace low grade personnel by highly qualified technicians, etc. with the view to making Sweden into one of the main Japanese bases for espionage, not only against Europe but also against the Americas.

B.

ORGANIZATION.

1. The various branches of the Japanese Intelligence Service operative in Europe work under the over-all control of the Imperial General Headquarters in Tokio. A subsidiary controlling Intelligence centre has been established in Berlin and is administered by the Military and Naval Attaches there. Each of the Japanese Intelligence centres in Europe has the right to communicate direct to its respective department in Tokio, as well as with the subsidiary Headquarters in Berlin. Berlin gives guidance on purely European matters and local administration of funds, staff, etc. and general reports, forwarded by the European Attaches, are often reported to Berlin for information. The Swedish Branch of the Japanese Intelligence Service has a somewhat weaker connection with Berlin than other stations, apparently due partly to OHNOBEKI having been in command of Intelligence activities there for so many years and also on account of his own extreme ambition and unwillingness to submit to any authority but Tokio. All branches of Japanese Intelligence activities in Europe are under the de jure direction of the Military Attache in each country.

2. There are five branches of Intelligence that come under consideration as far as Sweden is concerned:-

- i) Foreign Office Intelligence under the direction of the Foreign Ministry, Tokio.
- ii) Military Intelligence under the direction of the War Office.

/iii).....

- iii) Naval Intelligence under the direction of the Naval Headquarters.
- iv) Air Intelligence under the direction of the Aviation Directorate (Kokuhonbu).
- v) Technical and economic Intelligence directed by the Armaments Administration Directorate (Heikogyosaihonbu).

Of these various categories (i) is under the control of the Minister, OKAMOTO Suemasa; (ii), (iv) and (v) are directed by the Military Attache, ONODESU Makoto, and (iii) by IISHIKI Iori, the Naval Attache.

3. It will be noted that Military Intelligence is a loose term covering various non-military types of Intelligence. The various Japanese correspondents, "Dantai", "Asahi", "Yomiuri" and "Mainichi", also work in close liaison with the Military Attache and Naval Attache. There is no evidence that the "Daitoasho" (Greater East Asia Ministry) or any of its agents are operative in Scandinavia.

4. The above divisions of duty are not strictly adhered to in outstations and it has been found that the Minister, OKAMOTO, collects items of military and naval Intelligence, and the Military Attache, ONODESU, items of political Intelligence. Similarly, the technical department of the Navy collects items of information properly belonging to the Air Directorate and the Armaments Administration Directorate. There seems to be no whole-hearted liaison between the various departments, who forward as much material as possible to their respective heads in the hope of gaining some extra kudos. This applies especially to ONODESU who does not even take pains to conceal his ambition. As a result there occurs some overlapping in the Intelligence collected by the various departmental representatives.

Foreign Office Intelligence

5. This branch of Intelligence under the local direction of OKAMOTO Suemasa is designed to collect all items of a political or economic nature and also any items of general interest obtainable through the normal diplomatic channels, to which an ambassador has access. OKAMOTO himself, though a career diplomat, is interested in Intelligence matters, and apparently receives information from non-overt sources. He has not been condemned by Tokio for this but, along with several other heads of missions, was apparently deprived of the leadership of Intelligence Services owing to his not having made sufficient headway in collecting secret Intelligence from paid agents.

6. The fact that direct espionage against the country to which they are accredited might give rise to serious diplomatic embarrassment does not appear to have caused particular concern in Tokio.

7. Of the personnel at present attached to the Japanese Legation proper (Strandvägen 25, Stockholm) the following are engaged in Intelligence activities under the control of OKAMOTO Suemasa:

NAKEMURA.....

HATANI Kiyochi

HATANI Saburo

TSUCHI Jun

HATANI has been attached to the Legation since September 1941 and prior to their invasion by German forces dealt with all matters relating to Denmark and Norway. It was suspected that much of the intelligence covered by these persons is collected through regular channels, although, naturally, much is obtained from enemy publications, propaganda and casual contacts, etc. There have been several instances of the Foreign Office Intelligence Branch receiving information from secret agents, properly appertaining to the Military and Naval Attaches. This appears to be a general practice and does not occur only in Sweden.

8. Other members of the legation staff, such as ANDO Ryuichi and TOH Kenichi are also in all probability engaged in intelligence work.

Military Intelligence

9. The bulk of intelligence obtained by the Japanese in Stockholm comes under this heading and is handled by the Military Attache, ONOZUKA. The most copious information of a strictly military nature appertains to Russia and is probably received through Finnish liaison sources. This information is apparently of great interest to Tokyo, who continue to express grave concern about Russia's intentions. Military information is also obtained from Great Britain and the U.S.A., probably through sources recruited by the Military Attache himself. However, as far as can be ascertained, this material is not high-grade.

10. Owing to a deterioration in Japanese-German relations in Europe in 1943 the Military Attache's office began to collect quantities of material relating to German military dispositions, strength, etc., both in Germany itself and in occupied countries. It is possible that military information of this nature relating to Scandinavia i.e. Denmark, Norway and Iceland, is being obtained through unofficial Swedish sources.

11. Apart from the specific military information handled by the Military Attache, it must be remembered that his office also handles aeronautical, technical and scientific information and also all items of general security intelligence interest derived from liaison with other Military Attaches, especially Finnish and Hungarian. In fact, the Military Attache is given the widest scope in intelligence matters, and this is somewhat emphasized by his being the nominal head of all branches of the Intelligence. ONOZUKA is assisted in the collection of military information by INOUE Yoichi and SAITO Kichinosuke. INOUE is known to have contacted and recruited prospective penetration agents.

12. UR. Saburo has recently been appointed to the Military Attache's office in Stockholm. He was formerly employed in the same office in Helsinki. He has, for a Japanese, the unusual qualification of being fluent in English and Swedish and was believed to have been used by CHOUCHI, Military Attache in Helsinki, for intelligence purposes.

/s/r.....

Air Intelligence

13. Although this type of Intelligence is covered by the Military Attache, the Aviation Directorate in Tokio have appointed specialised agents for the collection of this type of information to various legations in Europe. They are apparently given the status of hors cadre officials in the Japanese Imperial Army, and come directly under the jurisdiction of the Military Attache. Information collected by these persons deals with all matters of Air Intelligence, i.e. strength and disposition of enemy air forces, aircraft production, tactical and technical innovations, etc.

14. The special qualifications and previous activities of SAITO Tatsuya indicate that he may hold the post of Air Intelligence Officer in Stockholm. It is also believed that NOBUJI Jiro may work in conjunction with SAITO in this field.

15. The information that these persons are able to collect is believed to be fairly reliable, possibly partly on account of the thorough technical training they have received, and also partly on account of the close liaison maintained, at least in Stockholm, with their German opposite numbers, i.e. the I/TMW and I/Luft representatives.

Economic and Technical Intelligence.

16. This type of information is required by the Armaments Administration Directorate. Representatives of this organisation are given a large range of subjects to cover dealing with production, statistics, economic dispositions, conditions, scientific research, technical inventions, in both enemy and neutral countries. Much of this Intelligence is collected from neutral countries through technical pamphlets and publications available there. Instances have been known where the Japanese have been able to obtain publications from Great Britain and Russia of a restricted nature.

17. Having envisaged already the collapse of Germany in the more or less distant future, Japan is consequently anxious to obtain all possible information of this nature from Germany and also from United Nations sources available in neutral European countries, while they still have the opportunity of so doing. It appears that Tokio regard this information at the present state of the war as of the greatest value, and consider that Intelligence regarding European technical innovations and improvements may have a direct influence on the conduct of the Pacific War.

18. It is not known for certain who the Armaments Administration Directorate representative in Stockholm is, although there are indications that it may be INOUE Yoichi. The Armaments Administration Directorate works in close collaboration with the Aviation Directorate and it has been noticed that certain persons actually appear as representatives of both organisations.

Naval Intelligence.

19. This aspect of Intelligence was first developed in Stockholm in May 1942 when MIKIMU Iori was appointed as Naval Attache. Before his arrival there had been no naval office in

/Stockholm.....

Stockholm. Considerable attention was paid to this type of Intelligence, partly because of the importance given to it by Tokio and the immediate necessity for collecting data about the British and American production, etc., and partly because the Japanese felt at the time that their offices in Lisbon and Madrid might be closed at any time owing to the breaking of relations. Consequently, Sweden became the natural choice for naval Intelligence as she was the only remaining neutral country in Europe with maritime connections and an exit to the New World, even though this was, in point of fact, restricted.

20. JESSEE's staff is almost entirely composed of former representatives of Japanese shipping companies in Europe, namely NISSEI, MITSUBISHI, etc. It is believed that efforts were made at one time to re-establish representatives of these companies in Sweden with a view to using them as cover for espionage activities in Gothenburg and Malmo, which were, from this point of view, just as important as Stockholm, if not more so.

Staff.

21. The Japanese representation in Stockholm is housed in three buildings, viz: Japanese Legation and Consulate - Strandvägen 25 I; Military Attache's Office - Lindegatan 38 V; Naval Attache's Office - Villagatan 24 I. These offices are staffed as follows:-

Legation

OKAMOTO Suganobu	Minister
KOD. Jotaro	Counsellor and 1st Secretary
TSUGIY. Jun	2nd Secretary
MATSUSHITA. Shozo	2nd Secretary (ill)
HIYORI Goro	3rd Secretary
SUGITA. Tsunehiko	3rd Secretary
TOH Kenichi	3rd Secretary
ANDO Ryuzo	Secretary
HATANAKA Ginzaburo	Secretary
SAKINRA Kiyoshi	Secretary
UNOU Tatsuo	Secretary
TAKEMUCHI Gotohi	Attache
MIYAJI Fukutaro	
HOLMI Yoshiro	
NOHI Hiroshi	

/S.T.O.....

SATO Kokuro
TOKIJO Saegiro
YAMAGUCHI Takaji

Military Attache's Office

OHGURA Takoto	Military Attache
NOJIMA Jiro	Assistant Military Attaches
IMAMURA Yoichi	
SATO Kichinosuke	
SATO Tatsuya	
UCHI Saburo	

Naval Attache's Office

KISHIMOTO Iori	Naval Attache
YAMAGUCHI Kenichi	Assistant Naval Attaches
IKEDA Masao	
OTSUKI Takahara	
SEZAKI Haruo	
YAMAGUCHI Koichi	
YAMAGUCHI Shuzo	

Staff, Secretarial, etc.

HOND, Fritzen Kito	Naval Attache's Office
HAUSWITZ, Signe	
GURSKI, Boris P.	Military Attache's Office
HJERBERG, Hils E.	
JACKSTRAL, Karl Svart	
KRESNER, Fru Birgit	
LARSENBERG, Fru Inga	Military Attache's Office.
LINDBERGER, Erik	
SMILAND, Fred	
STIGRODE, Mrs. Bliton	

/...part.....

22, Apart from these persons there are five press correspondents who enjoy the quasi-official protection of the Military Attache. They are:-

KOOGO Michi	"Mainichi" and "Nichi-Nichi"
SANJO Masami	"Dasei"
MARUICHI Shinichiro	"Asahi"
KITAHARA Masao	"Yomiuri"
KATO Shinzo	?

C.

POLICY.

1. Sweden is regarded primarily by the Japanese Government as a base for espionage against Great Britain, the United States and Russia. It is in the light of these considerations that the Japanese Intelligence operates in Sweden. The change of events between 1941 and 1942 has transformed it from a comparatively unimportant post into one of the most important bases for espionage against the United Nations. There has been a steady increase in activities and consequently in staff and organization in the course of the three years of Japan's belligerency. As far as can be ascertained this policy has been pressed upon the representatives in Stockholm by Tokio rather than vice versa; in fact, OODEKI, the Military Attache, has often shown considerable diffidence in connection with the appointment to Stockholm of so many persons with diplomatic cover of one sort or another. The increases in staff have been made gradually with appointments here and there at more or less regular intervals. This was done at the behest of OODEKI in order not to attract undue suspicion to the Legation on the part of the Swedish authorities, and also so as not to stimulate the activities of the Allied counter-espionage services.

2. Prior to Japan's entry into the conflict and also during the first few months of her belligerency, Japanese Intelligence in Stockholm was carried out mainly through liaison with other Axis Intelligence services, notably Finnish and Hungarian. At that time, however, the staff available, not to mention the funds, were extremely small and the amount of intelligence collected was not of any great importance. However, with Japan's entry into the war and the consequent drying up of direct sources of information in enemy countries a rather belated effort was made to develop their own direct sources of information. As this is a task that cannot be accomplished at short notice, even by a European nation operating in Europe, it is understandable that the Japanese, of a different race and psychology, etc., did not make very great progress along these lines.

/In spito.....

3. In spite of the effort expended by the Japanese on the development of their own sources of information, liaison with other Axis Intelligence Services, notably, the Finnish and Baltic ones, continued to provide them with important material.

4. Liaison with their German Axis partners has undergone several modifications in the course of the last three years. In the early days of the war this liaison appears to have been taken more or less for granted by the Japanese and none too heartily reciprocated by the Germans. In 1943 it was noticed that the liaison suffered considerable deterioration and that the Japanese soon became engaged in direct espionage against Germany herself, evidently due to the little faith they had in Germany's ability to prosecute the war successfully and their consequent desire to acquire from Germany as much information as possible before her collapse. On the German side also there appear to have been some obstacles in the way of efficient liaison, the most important being the bad or indifferent treatment their representatives were receiving at the hands of the Japanese in Japan and the whole of the Greater East Asia co-prosperity sphere.

5. In 1944, however, Tokio made determined efforts to rectify this situation, and began to give far greater consideration to the Germans in Japan; relations in Europe between the two powers improved considerably, possibly as a direct result of Tokio's overtures in this direction. In fact, towards the end of the year liaison in Sweden between the two nations was probably better than it had been at any time during the war. The advantages that had been acquired by this means, however, were somewhat offset by the total loss of Italian sources and of a number of Hungarian and Finnish ones. It would, therefore, seem reasonable to suppose that the Japanese Intelligence Officers will make determined efforts to salvage what they can of their Finnish and Hungarian contacts and sources, even possibly to the point of subsidizing them, as apparently there are a number of pro-Axis Intelligence Officers of these nations at a loose end in Stockholm at the present time.

6. The priority given by Tokio to Intelligence obtained from Great Britain, the U.S.A., and Russia appears to have varied somewhat according to circumstances. Priority was given to U.S. material when it appeared that expulsion of the Japanese from Iberia seemed imminent, but when this danger receded somewhat, more attention was directed to other fields of Intelligence. Information from Great Britain took first place when invasion of the continent appeared imminent and also continued to do so for some while afterwards. Subsequently, information from Russia headed the list on the defection of Finland and the Japanese were faced with the probability of these valuable sources of information ceasing to exist.

7. However, the possibility of having to evacuate all countries in Europe with the exception of Sweden and Switzerland has definitely occurred to the Japanese and presents a grave problem for them. They have apparently considered that Berlin can be made into a temporary headquarters for personnel which may have to be evacuated from Turkey, the Balkans, Iberia, Eastern Europe, etc. They also envisage, however, that Germany may collapse shortly afterwards and that definite provisions will have to be made for the disposal of their accumulated personnel there. The policy in this respect is to fill the Japanese Legations in Stockholm and Bern to capacity as a first step. Later, lower

/grade.....

grade personnel will, most likely, be exchanged for higher grade personnel, made available by the evacuation of other posts. The appointment of UKA to Stockholm and the removal of WADA therefrom are evidence of the application of this policy. The Japanese apparently do not feel they can rely upon the consent of the Soviet Union to allow their intelligence personnel to transit their country en route to Japan. Even though Japanese officers continue to transit Soviet territory, it appears that the granting of each visa is accompanied by considerable difficulties and that, should evacuation en masse become necessary, the Japanese evidently feel that only "career" diplomats would be allowed to return, and that their Intelligence Officers whom they consider more important, would either fall into Russian hands or remain stranded in Europe, more or less at the mercy of the Allies. Attempts will probably be made to dispose of any surplus personnel by appointing them as newspaper correspondents or by trying to effect their entry into neutral countries as ordinary citizens. This will only be done as a last resort as the Japanese prefer to give diplomatic cover to all their officials, wherever and whenever possible.

8. In view of the above factors, it is more than reasonable to suppose that prominent members of the Japanese Intelligence Services will make efforts to establish permanent residence in Sweden in the near future.

9. Although much Intelligence material can presumably be passed by W/T, the problem of physical communication with the homeland has been the subject of growing concern on the part of the Japanese in Europe. There are many items of special interest, such as blue-prints, samples, chemicals, special tools, radio parts, etc., that are urgently required by the Japanese authorities and whose transportation, under the present circumstances, is extremely difficult. The transportation of trained personnel presents even greater problems. Efforts have been made to communicate with Japan by blockade running, but this practice has undoubtedly been abandoned owing to the loss of French Atlantic ports by the Germans and the almost certain impossibility of evading the Allied blockade. Occasional contact is made with the homeland through Japanese diplomats travelling to their posts in Europe via Russia. The number of such persons granted transit by the Russians is very small and, moreover, the quantity of material they are able to carry is necessarily small and probably subject to Russian inspection.

10. Physical communication within Europe, however, presents little difficulty as the German communication networks are fully at the disposal of the Japanese. There does not appear to be any Japanese equivalent to the King's Messenger, the general practice is to use any travelling official or diplomat as a courier. There are certain persons such as KUNIKI Tsubota, TATSU Akira and UKA Saburo who, although they cannot be classified as full-time couriers, appear to perform such duties more than than most officials.

11. Japan will certainly make strenuous efforts in the future to retain her position in Sweden. With the collapse of Germany and the occupation of all non-neutral Europe by the United Nations it is evident that Japanese Intelligence will increase rather than decrease, as information will be more abundant and more readily available, even though the recruitment of sources will doubtless become increasingly difficult. /D. Liaison....

D.

LIAISON.

Liaison with the Germans.

1. Apart from the more or less formal contacts that normally take place between the Japanese Minister, OGIKAWA, and the German Minister, Dr. Hans MICHELS, liaison with the Germans of an intelligence nature appears to be carried out principally through the following channels:-

- a) (Dr) Hermann ^{CIT: Germany} ~~WITTMER~~, who, according to unconfirmed reports, was head of Abt. VII of the Sipo and S.D. in Stockholm.
- b) (Dr) Hans ^{CIT: Germany} ~~W. GIER~~, former head of K.O. Schweden.
- c) Karl Heinz ^{CIT: Germany} ~~KRUEGER~~, former head of Abwehr I, Luft.
- d) ^{CIT: Germany} ~~Albert U. ~~WITTMER~~~~, head of K.O. Schweden.
- e) The former German Air Attache, (Colonel) Reinhard von ~~WITTMER~~.
- f) Theodor von ^{CIT: Germany} ~~ROSENTHAL~~, ~~Abwehr I/III.~~

Liaison Channel for Intelligence between German and Japanese in Sweden

On the Japanese side this liaison is principally handled by the Military Attache, OGIKAWA, though on occasions HODAI Jiro and SITO Tatsuya have been present at conferences. Of late this liaison has become fairly effective, possibly because the Germans have found the Japanese information on Russia to be of some value, and considered it wise to reciprocate on general principles.

Liaison with the Italians.

Liaison Channel for Intel. between Italians and Japanese in Sweden

When Italy was still a belligerent on the Axis side, this liaison was carried out by ONODES, who contacted the Italian Minister, ~~REMICHI~~ ^{CIT: Italy} ~~Giuseppe~~ and the Military Attache ~~GIROBONO~~. It was also believed that ~~ISHIDA~~ Lord, Japanese Naval Attache, used to contact his Italian opposite number, ~~ANGELIS~~ Carlo. As there is now no recognised Fascist representative in Stockholm, this liaison has naturally come to an end.

Italian Naval Attache, Stockholm

Liaison with the Hungarians.

3. (Count) Zoltan ^{CIT: Hungary} ~~V. GI~~ was one of ONODES's closest contacts in the intelligence field, and also appears to have been a personal friend of his. Apart from reports from Hungarian sources that ~~V. GI~~ was able to provide ONODES with, it appears that he also acted as an intermediary for him in other fields. Unfortunately for the Japanese, ~~V. GI~~ was recalled to Budapest in 1943, in spite of determined efforts on the part of ONODES to effect his retention in Stockholm. ~~V. GI~~ has been, to a certain extent, replaced from the Japanese point of view by the Hungarian Military Attache ~~FRIGORAK~~ ~~KOBOR~~, who continues to supply ONODES with reports from Hungarian Intelligence Service sources in Europe. ~~FRIGORAK~~, who replaced ~~V. GI~~, is also believed to have been in contact with ONODES, but he has now been recalled to Budapest as well. It has been reported that much of the Finnish

CIT: Hungary

Gen. Mil. Attache, Stockholm

/r.torial.....

material available to ONODERA was passed to him through VAGI. However, there appears to be no valid reason why ONODERA should not obtain such intelligence direct from Finnish sources, in view of the closeness of Finno-Japanese relations.

Liaison with the Finns.

4. The Japanese are known to have obtained a considerable quantity of intelligence material through this liaison, especially information relating to Russia. Although the contact between the two nations in Stockholm was always good, the importance of this liaison increased tremendously on the defection of Finland. It is apparent that numerous Finnish Intelligence Officers will find their way to Stockholm and those who previously worked in close conjunction with ONKUCHI in Finland, such as ELSONEN, Director of Finnish Military Intelligence, will doubtless co-operate to some extent with ONODERA, should they establish themselves in Stockholm.

5. ^{CIT: Finland} ^{last Finnish Mil. Attach, Stockholm; in close touch with Japs on} ONODERA never appears to have placed very great confidence in the former Finnish Military Attache, H.K. STEVEN; his assistant, ^{Intell.} ^{in attch.} (Captain) Fredrik HELSINGIUS, was evidently in far closer touch with ONODERA on intelligence matters than his superior. As STEVEN was recently dismissed from his post, ONODERA's suspicions may well have been justified. ^{CIT: Finland} One of the principal unofficial Japanese contacts, especially in the early days of the war, was (Captain) Heikki JULIO OJALA, a Finnish subject who maintained close contact with the Bureau, Collarius and the Swedish Intelligence Service.

Liaison with the Swedes.

6. As the Japanese are so dependant upon their relations with the Swedes for their future security, it is surprising that so little evidence of attempts to cultivate Swedish sympathy has come to light.

7. Relations between the Swedish authorities and the Japanese appear to be correct, though not cordial. The Japanese admit that their liaison with leading members of the Government is very bad. ONODERA has made contacts with important Swedish Army Officers, including the Chief of the Swedish General Staff, Colonel Henry TOTTE, but it is not known how close the relationship has become. Other Swedish contacts that ONODERA has endeavoured to maintain are:-

- a) ^{CIT: Sweden} (Captain) Per Wilhelm Gussar GRIP, a member of the Swedish Intelligence Service.
- b) ^{CIT: Sweden} Per Birger JULIUSON, an old friend of ONODERA's.
- c) ^{CIT: Sweden} Ovo Gustaf Wilhelm RIMMEL, chief of the Protocol of the Swedish Foreign Office.

Contact of ONODERA Japs Mil. Att. and head of Japs I.S. in Sweden.

8. ONODERA is also believed to be in contact with a certain Colonel M. SING, a Balt, who has good connections with Swedish Intelligence and military circles. There is a possibility that information is obtained from and given to the Swedes through this person.

MANGEBLINDS.....

E.

MANCHURIAN.

9. The movement of certain Manchurian nationals has come to notice in Scandinavia. They are as follows:-

- a) H.H.R. Koichi (vide under personalities)
- b) H.H.R. Goro " " "

The Manchukuo State is officially represented in Berlin by H.H.R. Koichi, who styles himself an ambassador, and in Helsinki by H.H.R. Goro, who was accredited to Finland in December 1941, though his residence is given as Berlin. H.H.R. Koichi also appears in the Finnish diplomatic list as Counsellor, with residence in Berlin. There is apparently no Manchurian representation in Stockholm. Although little is known about these persons at the present time, their activities would bear investigation as it is possible that they have been given the task of acting as intermediaries between Russia and Japan, especially in questions relating to the repatriation of Japanese nationals through Russia.

F.

NORWAY AND DENMARK.

10. H.H.R. Goro, who has been attached to the Japanese Legation in Stockholm since September 1941, is reported to deal with all matters connected with Norway and Denmark. Apart from official visits paid by Vice-Admiral H.H.R. Katsuo and H.H.R. Goro to Norway and an Intelligence Conference held in Copenhagen, which was attended by H.H.R. Goro in the autumn of 1944, there is no evidence of any Japanese Intelligence activities in either of those countries.

11. Before the outbreak of the war Japan was represented in Norway and Denmark by honorary Consuls in Oslo and Copenhagen, who were of Norwegian and Danish nationality respectively. Since the German occupation, however, there appears to have been no further Japanese representation.

23P
- 15 -

PERSONALITIES.

ABE, (Vice-Admiral) Katsuo
CIT: Japan

Nationality: Japanese. Born:
Address:
Head of Japanese Naval Mission with H.Q. in Berlin; visited Sweden, Norway and Finland in November 1943 on official tour; reported to be a highly efficient Intelligence Officer.

ABE, Kenichi
CIT: Japan
photo with
encl 2 P1

Nationality: Japanese. Born: 26.11.93.
Address:
Arrived late 1944 to take up his post as Assistant Naval Attache at Japanese Legation, Stockholm; formerly Assistant Naval Attache in Rome and subsequently moved to Berlin; reported in Lisbon in October 1943. Suspected of Intell. activities.

AIDO, Ryuichi
CIT: Japan
IS suspect

Nationality: Japanese. Born: 26.7.16.
Address: A Casa do Sino, Rua da India, Estoril, Portugal
3rd Secretary at the Japanese Legation, Lisbon; visited Sweden in September 1944 and will probably be accredited to the Legation in Stockholm; in 1940 was diplomatic officer in the Japanese Embassy in Washington and has also spent some time in Paris; representative of the Japanese cultured pearl dealer, MIKIMOTO; it is reported that he deals in these products under official cover; travels on passport No.15116 issued Lisbon 6.10.42.

ASDORF, Major

Nationality: Swedish. Born:
Address:
Contacted OKUBERA Makoto (q.v.) together with Colonel ROTTER in November 1943; later invited by the Japanese Military Attache to meet the Assistant German Attache in Stockholm.

ASHIBA, Noriyuki (Lt. Col)
(Oberregierungsrat)
CIT: Japan
photo with
(encl 1 P1) IS suspect

Nationality: Japanese. Born: ^{Do B} 22.9.05.
Address:
Diplomatic courier and representative of the Japanese Ministry of Railways; visited Sweden in August 1943 "on official business", accompanied by OKUBERA Toraso (q.v.); an ASHIBA was reported in Portugal in April 1944 where he appeared to be acting as a courier; known to have been in contact with Colonel MIYAMA Yoshisada, then M.A. in Lisbon. /BOND,.....

(1)

14627

H BOND, (sic) Käte

CIT: Sweden
Sex: F

Nationality: Swedish. Born: 28.4.12.
Address:

Secretary and translator in the Japanese
Naval Attache's Office, Stockholm. *suspect Japanese agent.*
Formerly employed by General Motors,
Stockholm Branch and also believed to
have worked for SAITO Masami (q.v.), the
"Danco" correspondent in Stockholm;
succeeded Frk. JUNO as secretary to
MISHIDA Iori in September 1943;
extremely anti-Allied.

H DIKSHITZ, Sigmund (?Frk.)

CIT: Sweden
Sex: F

Nationality: Swedish. Born: 12.2.87.
Address: Stockholm, Fafnersvägen 33,
Djursholm. Tel: 55 11 Ch. *Swedish ally.*
Translator in the Japanese Legation in
Stockholm. *suspect.*

H BUTZ, Paul

CIT: Switzerland

Nationality: Swiss. Born:
Address: Stockholm, Hornogatan 49, Sweden.
Tel: 43 92 32.
Contact of CHODERA Makoto (q.v.): *head of Jap I.S.*
Occupation - Import of Swiss watches. *in Sweden.*

H DYMENKOWSKI, Borisuz

CIT: USSR

Nationality: Russian. Born:
Address:

Believed to contact Swedish journalists
on behalf of the Japanese and presumably
passed this information to SAITO Masami
(q.v.); formerly contacted URESHINO (q.v.);
reported to have been employed at one time
by the Russian Legation in Stockholm but
was dismissed; closely connected with a
publication called "Interna Servicio"
which gives "inside" information of a
commercial nature on various firms, etc;
this publication is believed to have been
used by the Japanese as a source of
economic information.

H HARA, Koichi

CIT: Japan?
Photo att.
(Frnk) P1

Nationality: Manchukuo. Born: 15.11.96
Okayama, Kun, Japan
Address:

Councillor of the Manchukuo Legation,
Berlin; also accredited to Helsinki;
visited Sweden in June 1943 and con-
tacted CHODERA and CHOUHUI (q.v.). *of Jap. I.S.*

H BRICKSON, Eric Siegfried

CIT: Sweden

Nationality: Swedish. Born:
Address: Norrköping, Drottninggatan 1, Sweden
Employed by Benzin AB, Ponnac, Norrköping;
reported to supply HOUZE with economic
Intelligence; formerly connected with
Radio Mundial. *MISER.....*

ESSE, Imtzer Karsson,
(Sw. All.)

CIT: Sweden

Nationality: Swedish. Born: 1891.
Address: Stockholm, Tegneragatan 57, Sweden

Foreign editor of Swedish pro-Nazi newspaper "Dagsposten"; accredited to Swedish Legation in Tokio in 1921; very pro-Japanese and believed to pass information to ONODERA and SAITO Kasumi (q.v.); believed to have acted as correspondent for "Domoi" prior to the outbreak of the war; Chairman of the National-Socialist organization, "Sveriges Nationella Forbund".

FUJI, Tadachi ✓

CIT: Japan

Nationality: Japanese. Born: 5.5.11.
Address:

Secretary at Japanese Legation, Helsinki; has been stationed in Helsinki since 1941 when he was a cipher clerk; visited Sweden in August 1944.

FUJIMURA, (Captain) Yoshitami ✓

CIT: Japan

Nationality: Japanese. Born: Feb. 1908
Address:

Assistant Naval Attache in Helsinki in December 1943; has transited Sweden on several occasions; suspect

CHER, (Captain) Pur Wilholm
Gunnar

CIT: Sweden

Nationality: Swedish. Born: 29.6.87.
Address: Stockholm, Sturegatan 29, Sweden
tel: 70 86 68.

Believed to provide ONODERA (q.v.) with information from Swedish General Staff and possibly information derived from Military Attaches abroad.

GUKSEI, Boris P.

CIT: Poland?

Photo Lett

(incl. p. 1)

HAGATA, (Chosamon)
" (Tyosamon)

CIT: Japan

Photo Lett.

(incl. p. 1)

Nationality: ? Pole. Born: 21.11.02.
Address:

Interpreter to Japanese Military Attache in Stockholm; suspect

Nationality: Japanese. Born: 3.3.10.
Address:

Resident in Finland since July 1943 and believed to be attached to the Legation in Helsinki; contact of AIDO Ruichi, HINOSE Eiichi and TOH Konichi (q.v.); visited Sweden in October 1943 and September 1944. Contacts

HANSECRID, Nils E.

CIT: Sweden

Nationality: Swedish. Born:
Address: Stockholm, Djurholmsvägen, Sweden
19, tel: 55 34 24.

Employed in Japanese Legation, Stockholm;

suspect; HANAYAKA...

(3)

H HATANAKA, Ginzaburo

CIT: Japan
Photo (att)
(End p2)

Nationality: Japanese. Born: 26.4.11.
Address: Stockholm, c/o Fru
Bakergatan 41 II, tel: 60 41 05 Sweden.
Secretary at the Japanese Legation,
Stockholm where he has been since
September 1941; work conducted with
Norway and Denmark *import U.S.*

H MATSURI, Goro

CIT: Japan

Nationality: Japanese. Born: 20.10.12 Tokyo, Japan
Address:

3rd Secretary at Japanese Legation, Vichy.
From September 1941 to July 1944; visited
Sweden in October 1944; *import U.S.*

H MATSURI, Sakuro

CIT: Japan
Photo (att)
(End p2)

Nationality: Japanese. Born: 22.7.05.
Address:

Army technician; visited Sweden in
September 1943 and contacted ONOEDA (q.v.); *head*
reported in Lisbon in August 1943; pass-
port No. 374405 issued 20.12.40 by Foreign *of Jap*
Office, Tokio. *J.S. 41*

H HERNAND, Harry Onkar

CIT: Sweden

Nationality: Swedish of German origin.
Address: Stockholm, Brovik på Lidingö,
Södra Kungsvägen 231, *tel. 63 68 07.*
Owner of firms H. Hornum, Harry O. Harry,
B. E. H. Hotelor, all of Kungsgatan 65;
contact of ONOEDA (q.v.); believed to
collect economic intelligence *for Jap U.S. in Sweden*

H HIGUCHI, (Lt. Col.) Takaashi

CIT: Japan

Nationality: Japanese. Born:
Address:

Assistant Military Attache, Berlin; was
formerly Assistant M.A. Stockholm (up to
middle of 1941); also believed to have
been in Iraq; in February 1942 was
unaccredited Assistant M.A. to Helsinki
and Stockholm but relinquished those
appointments; important intelligence
Officer; attended conference at German
Legation, Stockholm in March 1943, where
he conferred with Dr. Hans WAGEN, former
Leiter K.O. Schweden, and Hauptmann
Albert UHLENBACH, KOF Schweden; also
contacted Agneta S. TOPELIUS, "Asahi"
correspondent in Stockholm.

H HIRAI, Takataro

CIT: Japan

Nationality: Japanese. Born: 1913.
Address:

Believed to be employed in the Japanese
Legation, Stockholm; arrived Sweden from
Berlin in October 1944; *import U.S.*
HIRAISE.....

(4)

HIROSE, (Major) Eiichi ✓

CIT: Japan

Photo (att)
(Encl. p. 11)

Nationality: Japanese. Born: 23.1.11

Address: Helsinki, Borgnagatan 1A3, ^{Tokyo, Japan,} Finland
Tel: 69718.

Assistant Military Attache, Helsinki.
Now awaiting repatriation; frequently visits Stockholm where he contacts ONOBE (q.v.); prominent Intelligence Officer engaged in work on Allied codes and ciphers; close associate of Major Frederic KOBOR, Hungarian M.A. Stockholm; has been in contact with Lt. Col. OKAWA Miki (q.v.) and in close liaison with Finnish Intelligence Services in Helsinki.

HOLMQUIST, Elisabeth

CIT: Sweden
Photo (att) Sex: F
(Encl. p. 11)

HIGUCHI, (Lt. Col.) Jiro ✓

CIT: Japan

Photo (att)
(Encl. p. 11)

Nationality: Swedish. Born:

Address:

Contact of MAKUTA Yoichi (q.v.); suspect I.S.

Nationality: Japanese. Born: 6.3.06 Tokyo, Japan
Address: Stockholm, Smedsbacksgatan 7 IV, ^{Sweden}
Tel: 61 97 77.

Assistant to ONOBE, Japanese Military Attache in Stockholm; formerly employed by MITSUI in London; has travelled extensively in Europe during the war; appointed to Stockholm in May 1942; receives a salary of 1500 Kronor per month; contacts Anita MAGNUSON, Saga STENSTRAK, Paul BURKI, KAWAKITA Shiro and KIKUCHI Shojiro (q.v.); rents a clandestine apartment in Stockholm probably used for contacts.

HORI, Hiroshi ✓

CIT: Japan

I.S. suspect.

Nationality: Japanese. Born: 22.8.08.

Address: (1943) Rua Rodrigo da Fonseca 93, Lisbon, Portugal

Accredited to the Japanese Legation, Stockholm; formerly diplomatic officer at Japanese Legation, Lisbon; passport No. 373265 issued Tokyo 12.11.40; visited Berlin in September 1944.

HIRIUCHI, (Major) Hi

CIT: Japan

Nationality: Japanese. Born:

Address: Stockholm, Furusandegatan 7, Sweden
Tel: 61 61 33.

Reported to be in Berlin in October 1944; suspect
A person of this name who lives at above address is possibly identical.

HIRAKAWA, } Yoshio
HIRAKAWA, } (Encl. p. 11)

CIT: Japan

Nationality: Japanese. Born: 25.9.98.

Address:

Visited Stockholm in September 1944;
described as a legation employe; place of residence unknown; suspect I.S.
D.O.B.

H IKEYAMA, (Captain) Haruo ✓

CIT: Japan

Nationality: Japanese. Born: 20.2.05.
Address:

Believed to be a Naval Intelligence Officer; visited Stockholm in August 1944, accompanied by SAKAI Haseo (q.v.).

H INABA, (Captain) Masaki ✓

CIT: Japan

Photo (alt. 2 p.)

Nationality: Japanese. Born:
Address:

Transferred to Sweden as Assistant Naval Attache in November 1944; *in quest.*

H IKOUYE, (Major) Yoichi ✓

CIT: Japan

Photo (alt. 2 p.)

Nationality: Japanese. Born: 11.1.12.
Address: Stockholm, Valhallavägen 129, c/o Håkylvan, Tel. 62 66 51.
Assistant Military Attache, Stockholm; one of OHNUMA's (q.v.) principal assistants in intelligence activities; known to contact and recruit agents; has served for several years in India; formerly employed by MITSUBISHI in Berlin and attached to the Military Attache's Office, Stockholm, as an "hors cadre" official since May 1942; has visited Berlin and Helsinki on several occasions; has a reputation for being an inveterate gambler.

H ISHIGE, (Lt. Col) Shozo

CIT: Japan

Nationality: Japanese. Born:
Address:

Accredited to Japanese Embassy, Berlin; visited Stockholm in November 1942; *in quest.* together with HONMA Jiro, SUMIYAMA Shigenasa, NAKADERA and HIROBE Eiichi (q.v.); party proceeded to Helsinki; visited Lisbon in May-June 1944 and contacted Col. HISHIDA, then M.A. in Lisbon; Diplomatic passport No. 373795 issued Tokio 28.11.40.

H ISHIZAKA, (Lt. Col) Takeo

CIT: Japan

Nationality: Japanese. Born: 14.9.04, Tokyo, Japan
Address:

Assistant Military Attache, Berlin; visited Sweden in February 1944 for discussions with OHNUMA (q.v.), SUZUKA Ritsiro and German technical official of ^{the} Japanese Imperial Army and was stationed in Germany in March 1941; has also visited Helsinki. *Jap. S.*

/In TA,.....

(C)

H IWATA, Saburo

CIT: Japan
Photo Alt
(Enc 2 P 3)

Nationality: Japanese. Born: 20.7.10 Tokyo, Japan
Address:

Visited Stockholm in May 1944 on behalf of
ROKUSHI, Military Attache to Berlin, ~~arrived~~
Secret aided by SASAKI Sadao and IKIKAWA
Akira (n.v.).

H JENSEN, Karl Ewert

CIT: Sweden

Nationality: Swedish. Born: 9.12.05.
Address: Stockholm, Grov Magnigatan 11
III, Sweden

Official in the Japanese Legation,
Stockholm: may be used as a "out-out".

H JOHANSSON, Per Birger

CIT: Sweden

Nationality: Swedish. Born: 1887.
Address:

Chief of Foreign Office department.
Dealing with protecting powers, questions,
etc. Formerly held a Swedish diplomatic
post in Riga: approached by the Japanese
I.S. in an attempt to establish contacts
in the Swedish diplomatic posts in Great
Britain and the U.S.A.

JUKI, Fri.

Nationality: Swedish. Born:
Address:

Former secretary to HASEGAWA Iori, Naval
Attache in Stockholm: dismissed in
September 1943.

H JUKURI, Hidoo ?

CIT: Japan

Nationality: Japanese. Born: 21.1.01.
Address:

Arrived in Sweden in August 1944: des-
cribed as a diplomat; ~~arrived~~ I.S.

H KAGI, (Captain) Arnold

CIT: Switzerland

Nationality: Swiss. Born: 4.2.14.
Address: Stockholm, Hookoby, Grävika-
vägen 25, Sweden

Swiss Military and Air Attache, Stockholm:
believed to be a source of ~~information~~ (n.v.);
arrived in Sweden from Berlin in October
1944.

KAJIURA, Lt. Col. (Dr.)

Nationality: Japanese. Born:
Address:

Attached to Japanese Military Mission
in Berlin: visited Sweden in January
1943 and contacted ~~Watanabe~~ Jiro (n.v.);
collects information relating to advan-
ced European technique from overt and
secret sources: attached to German H.Q.
in Italy where he was wounded in throat.
NATO.....

H. ~~KATO~~
KATO, Kinoo
(72.7.28)
CIT: Japan

Nationality: ~~Japanese~~ Born: 20.1.01 Tokyo, Japan
Address: Berlin.

* Journalist, possibly a correspondent of
"Nichi-Nichi"; visited Stockholm in
April 1943; ~~suspect U.S.~~

H. KAWAKITA, Shiro
CIT: Japan

Nationality: Japanese Born: 15.7.08 Tokyo, Japan
Address:

Engineer; visited Stockholm in March 1944;
described as a courier; accompanied by
* YOSHIMIZU Mitsutaro (q.v.); contacted
OROHARA and ~~SHIWA~~ (q.v.).

H. KIKUCHI, Lt. Akira
CIT: Japan
Photo Att.
(End of p.)

Nationality: Japanese Born: 31.3.07 Tokyo, Japan
Address:

Assistant Military Attache, Helsinki;
visited Stockholm in March 1943; described
as a courier; again visited Stockholm in
May 1944 accompanied by ~~MIYATA Saburo~~ and
SAITAI Seisaku (q.v.); on this occasion he
contacted ~~OROHARA~~ (q.v.); now believed to
have been transferred to the Balkans.

H. KIRUCHI, Shojiro
CIT: Japan

Nationality: Japanese Born: 1.3.12 Sendai, Japan
Address:

Technician attached to the Japanese
Consulate, Berlin; visited Sweden in June
1943 and 1944 from Berlin; accompanied by
KOHJI Jiro on the latter occasion;
reported in Lisbon on 4.2.42; formerly
employed by Nippon Yusen Kaisha. ~~suspect U.S.~~

H. KIKUCHI, (Major) Yoshihiko
CIT: Japan

Nationality: Japanese Born:
Address:

Believed to be a technical expert; visited
Stockholm in September 1943 accompanied by
Lt. Col. YOSHIMIZU (q.v.); later proceeded
to Helsinki from Sweden. ~~suspect U.S.~~

H. KISHIMOTO, Torazo (Lt. Col.)
CIT: Japan
Photo Att.
(buddy) 15 suspect

Nationality: Japanese Born: 18.12.01 Tokyo, Japan
Address:

Visited Sweden en route to Helsinki in
August 1943, accompanied by ~~SHIWA~~
Horiyuki (q.v.); in October 1943 was
reported in Madrid in company with
YOSHIMIZU Mitsutaro (q.v.); again reported
in Stockholm in August 1944.

KITAHARA.....

H
*
KIMURA, (Dr) Hiroshi
address: ~~KITAHARA-KUJZ, (Dr) Hiroshi~~
at HIRAMIZ, Hiroshi
CIT: Japan

Nationality: Japanese, Born: 21.11.09 Tokyo, Japan
address: Stockholm, Furusundsgatan 7, tel: 67 25 72, Sweden
Stockholm correspondent of "Yomiuri";
succeeded OKAMOTO in 1943; economist
by profession; held a scholarship at the
Kochetellon Research Institute, Geneva, in
1939; reported to be engaged in espionage
in Basle in 1940; attached to the Japanese
Legation in Rome in 1941; also reported in
Budapest and in Lisbon in 1942; last
known address before proceeding to Stockholm
was Froiestrasse 14, Zurich; married to a
Persian who maiden name ~~is not known~~ occasionally
uses ~~her maiden name~~

H
*
KJESBER, Birgit (fru)
CIT: Sweden
Sw: F

Nationality: Swedish, Born: 15.12.12.
address: Stockholm, Eric Dahlbergsgatan
41, tel: 67 24 99, Sweden
Employed as a translator in the Japanese
Legation, Stockholm; ~~was in Japan~~

H
*
KOBAYASHI, (Major) Shigeru
CIT: Japan

Nationality: Japanese, Born: 10.2.05.
address:

Probably a communications expert; visited
Sweden in May 1944, accompanied by S.W.D.
Tamura (q.v.); ~~was in Japan~~

H
*
KOH, Jotaro
~~was in Japan~~
Photo att

Nationality: Japanese, Born: 28.7.96.
address: Stockholm, Banergatan 10 IV, Sweden
tel: 62 11 75.

As Charge d'Affaires at the Japanese
Legation, Stockholm before OKAMOTO's
arrival in December 1942, now 1st Secretary;
appointed Consul-General at Zurich in
November 1944; to be succeeded by Consul-
General ~~was in Japan~~ (q.v.); previous posts
were Ottawa, Berlin (1st Secretary), Vichy
(Counsellor); probably not engaged in
Intelligence activities; reported to be
a Liberal and son of a Japanese Christian;
has a brother married to an American.

H
*
KOONO, Michi
at ~~was in Japan~~
CIT: Japan
Photo att
Kunigida

Nationality: Japanese, Born:
address:

Stockholm correspondent of "Michi-Michi" ~~was in Japan~~
secretary - Mrs. KURTILJA ~~was in Japan~~
(q.v.); formerly in Berlin; claims to
be on terms of close friendship with
daughter of Swedish Public Prosecutor.

H
*
KOHNO, Zungoro
CIT: Japan

Nationality: Japanese, Born: 8.2.01 Tokyo, Japan
address:

Visited Sweden in June and July 1944 a
professor; ~~was in Japan~~ / KURIMAR.....

H. KURIHARA, Nobuo

CIT: Japan

Nationality: Japanese. Born: 30.1.15.
Address:

Diplomat: visited Sweden in June 1944 for about a fortnight accompanied by SUGITA, franciscan (n.v.) suspect U.S.

H. KUSAJ, Marie Mathilde

CIT: [redacted]

Nationality: Danish. Born: 18.9.18 Narva Estonia
Address:

Servant to General ONODERA (n.v.) is reported to have connections with Paul WIKSTROM and Walter WISTEN, both of whom are employed in the German Legation in Stockholm. Swedish passport No. 1200/1941 (Prenatal pass).

Head of Jap. I.S. in Sweden

H. KUWAKI, Tsutomu

CIT: Japan

Nationality: Japanese. Born: 25.6.13.
Address:

Courier: visited Sweden in October and December 1943 and again in May 1944.

H. KUNDBERGER, (n.v.) Oswald
nee BRADSTRA

CIT: Sweden
Sex: F

Nationality: Swedish. Born: 2.5.16.
Address: Stockholm, Grevgatatan 51, Sweden
Translator in the Japanese Military Attache's Office, Stockholm, sister-in-law to Spanish Minister in Stockholm.

suspect U.S.

H. LINDBERGER, Erik

CIT: Sweden

Nationality: Swedish. Born: 22.4.09.
Address: Stockholm, Rörstrandagatan 10, Sweden
Tel: 31 76 68.
Employed in the Japanese Legation in Stockholm, *suspect U.S.*

H. LINDHIST, (Lt. Col) Karl
address

CIT: Sweden

Nationality: Swedish. Born: 6.11.95.
Address: [redacted]
Contact of ONODERA (n.v.); formerly Deputy Military Attache to London; from 1937 to 1940 Military Attache to Baltic States; has also seen active service.

Head of Jap I.S.

H. LUNTHORP

Nationality: Swedish. Born: c. 1893-5.
Address:

Reported in May 1943 to be a frequent visitor to ONODERA (n.v.); speaks German well.

H. MCINTOSH

CIT: Japan

Nationality: Japanese. Born: [redacted]
Address: Stockholm, Lutzengatan 9 IV, c/o L'OCCE.
Reported to be a Japanese post-box.

L. J. MASON.....

H
* WAGNUSSON, Anita

CIT: Sweden
Sex: F

Nationality: Swedish. Born:
address: Stockholm, 65v Turegatan 20,
Pension Alma, Sweden
Contact of HOJII, Jiro (q.v.); engaged to
an American; was intended for dispatch
to the U.S.

H
* WAGNUSSON, Anita?

CIT: Japan

Nationality: Japanese. Born: 7.1.06,
address:

Reported in Sweden in January 1944 accom-
panied by WAGII, T. Masanori (q.v.);
described as a courier.

H
* WAKIURA, Kiyoshi

CIT: Japan
Photo Att
(Encl. p. 1)

Nationality: Japanese. Born:
address: Stockholm, 1 Järhovagatan 3 IV,
c/o Mrs. Ribon, Stalls 42 69 31,
Secretary at the Japanese Legation,
Stockholm since September 1941; engaged
in intelligence activities.

H
* WASUJITA, Shozo (X)

CIT: Japan

Nationality: Japanese. Born:
address: (Hospital) Stockholm, Östrans
Sjukhus TBC, Box 44, Sweden
Secretary at the Japanese Legation,
Stockholm; Intelligence Officer; has
been in hospital since the end of 1943;
replaced by WASUJITA, Jun; previously
lived at Lindögatan 42, c/o T. Hassel-
qvist.

H
* WAKAI, Yoshinori

CIT: Japan

suspect

Nationality: Japanese. Born: 15.7.10.
address:

Reported in Sweden in 1944; described
as a Legation employee; passed through
U.S. on way to Germany as staff member of
MITSU Co. in summer of 1939; stationed
in Berlin as employee of Mitsui Bussan in
September 1940.

H
* WAKAI, (Commander) Iori

CIT: Japan
Photo Att
(Encl. p. 4)

Nationality: Japanese. Born: 22.1.05.
address: Stockholm, Villagatan 24 I tr., Sweden,
tel: 20 19 14.
Japanese Naval attaché to Stockholm since
1942; attached to the Navy General
Staff in Tokyo in January 1939; was in
France prior to his appointment in
Stockholm; believed to be a capable
Intelligence Officer, interested primar-
ily in recruiting espionage agents G.B.
and the U.S.; accompanied WAKAI, Iori
WAKAI, Iori (q.v.) on an official tour of
Inspection to Norway in November 1943.

/H.K.G.Mh.....

H * TAKAGAKI, Susumu

CIT: Japan

Nationality: Japanese, Born: 24.9.14,
Address: Osaka

Possibly a courier; left Japan for Europe early in 1943; in January 1944 was reported in Lisbon and in Stockholm in August; travels on diplomatic passport No. 384308 issued Tokio 17.2.43.

H * YAMAMOTO, Harutaro

CIT: Japan

Nationality: Japanese, Born: 2.10.94,
Address: Osaka

Arrived Stockholm end of June 1944 and left for Berlin early in July; described as a diplomat; suspect, S.

H * YAMAMOTO, Toyochi ✓

CIT: Japan

Nationality: Japanese, Born: 2.8.95 Osaka, Japan
Address: Osaka

Appointed Japanese Minister to Finland in April 1943; has been in diplomatic service since 1922; reported to have been an important member of the 5th Section, Bureau of Investigation of the Foreign Office; was Consul-General in 1940, thereafter Counsellor to the Japanese Embassy, Hanking.

H * YAMAMOTO, Kaoru

CIT: Japan

Nationality: Japanese, Born: 1.5.07,
Address: Finland, Junttinen's Villa, Grankulla.

Counsellor at the Japanese Legation in Helsinki where he has been stationed since 1941; has visited Sweden on several occasions, often as a courier.

H * YESSIN, Hils

CIT: Sweden

Nationality: Swedish, Born: Sweden,
Address: Stockholm, Lindegatan 31.
Contact of OHMURA TAKOTO (n.v.); believed to supply him with some economic intelligence.

H * YAMAZAKI, Goro

CIT: Japan

Nationality: Japanese, Born: 10.8.09,
Address: Osaka

Secretary to the Manchukuo Legation, probably in Berlin; arrived Sweden in June 1942; suspect, S.

H * YAMAMOTO, Lt. Col. Hisashi

CIT: Japan

Nationality: Japanese, Born: 18.12.96,
Address: Kagoshima, Japan

Assistant I.A. Berlin since February 1941; visited Balkans frequently and Sweden in June 1941; believed to be an important intelligence officer. MIYAMOTO.....

H* NISHIMURA, Kazanori (X)

CIT: Japan

Nationality: Japanese, Born: 7.9.05.
Address:

Military on incam: visited Sweden in January 1944 together with NAKAMURA(?); suspect 1.5.

H* NODA, Toranosuke

CIT: Japan

Nationality: Japanese, Born: 27.5.02.
Address:

Diplomat: visited Sweden in August 1944; reported in Lisbon in November 1943; suspect 1.5.

H* OHARA, Hisayuki

CIT: Japan

Photo Coll (Evid 2 p4)

Nationality: Japanese, Born: 19.6.01.
Address:

Employed by the Japanese Foreign Office; transited Stockholm for Helsinki from Berlin in July 1943, accompanied by MATSUMAE Yoshio, SHIMIZU Tetsuo and OTA Takoshi (c.v.). suspect 1.5.

H* OHNISHI, Ingu

CIT: Sweden
inf: 1

Nationality: Swedish, Born:
Address: Stockholm, Söbagatan 165, Sweden

Believed to be MATSUDA Yoichi's (c.v.) mistress by whom she is also probably used as a cut-out; engaged to a British airman; MATSUDA intended to send her to the U.K. as an agent.

H* OKAMOTO, Susumasa

CIT: Japan

Nationality: Japanese, Born: 16.3.92 Kyoto, Japan
Address: Stockholm, Villagatan 13B, 3 tr, Sweden
Tel: 20 89 90.

Appointed Japanese Minister to Stockholm in December 1942; previously attached to the Japanese Embassy, Washington; Consul-General and Counsellor to the Embassy in Shanghai and attached to the Embassy in London in 1938; probably id/v OKAMOTO Kisei, arrested in Singapore, interned in India and subsequently exchanged via Lorenzo Marques; interested in the organization of Intelligence work.

H* OKAMOTO, Hitoshi

CIT: Japan

Nationality: Japanese, Born: 26.11.03.
Address:

Diplomat: arrived in Sweden in September 1944; suspect 1.5.

H* OKAMOTO, (Lt. Col.) Akio

CIT: Japan

Nationality: Japanese, Born:
Address: Lisbon, Chalet Beaumont, Rua Inglaterra Historil, Portugal

Japanese Military Attache, Madrid; visited Sweden in November 1942 and proceeded to Helsinki in company with /NOCA.....

OKAWA, Lt. Col. Kikio (contd.)

HIGASHI, Jiro, ~~XXXXXXXX~~, ~~XXXXXXXX~~ Shigenisa and ISHIGURO Shozo (i.v.); has lived for some time in Rome, where in 1943 he was making arrangements for the purchase of armaments, etc. from the Italian High Command; was appointed Military Attache to Lisbon as well as Madrid, and appears to have spent some time in both capitals; travels on diplomatic passport No. 279938 issued Rome 9.7.38; reported in Lisbon in March 1944.

H. OKAWA, Kotaro
CIT: Japan

Nationality: Japanese. Born: 29.12.03.
Address:

Counsellor at Japanese Legation, Lisbon in July 1944; ordered to attend Intelligence Conference in January 1943; arrived in Sweden in October 1944.

H. OZUMI, (Major-General) Lakoto
CIT: Japan
Photo list
(Enc 2 pt)

Nationality: Japanese. Born: 19.8.87. Iwata, Japan.
Address: ~~Alinnetgatan 33 III, Stockholm, Sweden~~
tel: 61 60 58.

Japanese Military Attache, Stockholm; head of Japanese Intelligence in Sweden; cunning and artful, (good Intelligence Officer but extremely cautious; frequently visits Berlin and other European capitals on official business; formerly lecturer at Japanese Military Academy; was at one time attached to Red Army as foreign Military observer; has been stationed in Riga and Warsaw; speaks fluent Russian; his wife is in Stockholm and he is believed to have a son at school in Germany; contact with Latvian and Estonian Diplomats.

H. OZUMI, (Colonel) Hiroso
CIT: Japan

Nationality: Japanese. Born: 8.9.99.
Address: Helsinki, Finland
24512.

Japanese Military Attache, Helsinki; has visited Sweden on several occasions; works in close liaison with Finnish Intelligence Service; head of Japanese Intelligence in Finland.

H. OCHI, Kazuto
CIT: Japan

Nationality: Japanese. Born: 24.5.01.
Address:

Engineer Commander in Japanese Navy; Assistant Naval Attache, Berlin; attended conference of Intelligence officers in Berlin in January 1943; visited Sweden in the summer of 1944.

/Ochi.....

H * Watanabe
CIT: Japan
Photo Att
(Exd 2 p)

Nationality: Japanese. Born: 27.5.08.
Address: ? Born.

Japanese official; visited Sweden in July 1943 travelling on business of suspect.
HONJI I Zensai, supposed Japanese suspect left at large for Europe; later proceeded to Helsinki accompanied by WATANABE Yoshio, SHIMIZU Totsuo and OHTA Hiroyuki (q.v.).

H * MITSUKI, (Dr.) Takahara
CIT: Japan

Nationality: Japanese. Born: 7.9.07.
Address: A Grevgatån 61 IV, Stockholm, Sweden
Tel: 61 04 79.

On the staff of the Japanese Naval Attache, Stockholm, as "honor cadre" official since June 1943; formerly an agent of Yamashita Kosen Kaisha in Berlin; engaged in maritime intelligence; believed to be an old friend of HONJI Jiro (q.v.).

H * BERGSTRANDER, (Fr.) Kartin
no. 1000000000
CIT: Sweden
Sex: F

Nationality: Swedish. Born: c. 1917.
Address: A Rindögatan 50, Stockholm, Sweden

Secretary to KOOZO Michi, Stockholm correspondent of "Herald" and "Michi-Michi"; frequently visited Poland when at Uppsala University in 1937; came to Stockholm in October 1940 with a job in export firm; later employed by Aktiebolaget Ijus; speaks French, English, German and Polish; married to Lemart, who was reported in 1942 to be employed in the British Legation, Stockholm. suspect

H * KOTHEI, Colonel)

Nationality: Swedish. Born:
Address:

Contacted ONODERA, together with ASDORF (q.v.) in November 1943; later invited by the Japanese Military Attache to meet the Assistant German Attache to Stockholm.

H * ITO Masao
CIT: Japan
Photo Att
(Exd 2 p)

Nationality: Japanese. Born: 30.10.11 Chiba.
Address: A Strand Hotel, Stockholm, Sweden.

Stockholm correspondent of "Dansk" News Agency; has visited Berlin on several occasions and has travelled in company with HONJI Michi and ITO Saburo (q.v.); co-operates with ONODERA (q.v.); passport no. 376457 issued by Japanese Foreign Office; visited Lisbon in May 1941 and has travelled widely in Iberia; entered the U.S.A. in April 1942. suspect 15.
/R/K/.....

H* SAKAI, (Captain) Naoo (Naval) Nationality: Japanese. Born: 12.9.00.
Address: Japan

CIT: Japan

Japanese courier with diplomatic status; employee of Naval Attache's Office, Berlin; visited Lisbon in March 1942 and Stockholm in February 1943 and August 1944; accompanied on latter occasion by NOZAKI Haruo

H* SAKAYA, Tadashi ✓

CIT: Japan

Nationality: Japanese. Born: Sept. 1887.
Address: Japan

Envoy Extraordinary and Minister Plenipotentiary to Finland from November 1940 to April 1943; when he was succeeded by YAMAMOTO Tomochi; has served in Manchuria and Germany and in 1914 was attached to the Imperial Japanese Army as an interpreter; has visited Stockholm.

1.5. suspect

H* SAKUMA, (Dr.) Shigeki

CIT: Japan

Nationality: Japanese. Born: 17.10.04.
Address: Korsharvagen 6, Stockholm, Sweden.
Employed in the Economic Section of the Japanese Embassy, Berlin; deserted to Sweden in January 1944; and endeavoured to establish himself as a political refugee; persuaded to return to Berlin; accompanied by YOSHIZAKI Taro and SATO Shozo (s.v.), on being informed that friends and relations would be liquidated if he did not behave (June 1944); refused to place himself at the mercy of the Allies.

suspect 1.5.

H* SAKUMA, Shin ✓

CIT: Japan

Nationality: Japanese. Born: 25.8.93. Chiba, Japan.
Address: Japan

Ex-Minister to Baltic States and subsequently political observer in Europe without fixed place of residence; since collapse of vassal state; has been attached to Stockholm, awaiting leave to travel to Japan via U.S.S.R.; visited Germany and Italy April 1942, Switzerland April 1943, Spain and Portugal April-May 1944; travels on passport No. 016503 issued 21.2.41 in Berlin.

suspect 1.5.

H* SAKURAI, Ichiro (Lt. Col.)

CIT: Japan

Nationality: Japanese. Born: Japan.
Address: Japan

Assistant Military Attache at Vichy up to July 1944; visited Sweden in June 1943; suspect 1.5.

/SJIAD:.....

H. YAMADA, Taroichi

CIT: Japan

Nationality: Japanese, Born: 1.1.10.
Address:

Attached to Japanese Embassy, Berlin; visited Sweden in May 1944, accompanied by KOJIMA, SHI Shigoru; was in Borneo in 1943; suspect I.S.O.

H. YASAKI, Sadao

CIT: Japan

Photo Att
(Encl 2 ps)

Nationality: Japanese, Born: 2.5.14 Tokyo, Japan
Address:

Japanese official attached to the Military Attache's Office, Berlin; visited Stockholm in May 1944 to discuss official matters with ONODERA, accompanied by YASAKI Sadao and YAMADA, Taroichi; believed to have been attached to the Legation in Stockholm in 1940. Head of Jap. IS in Sweden.

H. YAMAMOTO, Lt. Col. Kazuo

CIT: Japan

Nationality: Japanese, Born:
Address:

Was Japanese Military Attache to Sofia in 1942; visited Stockholm in November 1942; suspect I.S.

H. YAMATO, Kazutoshi

CIT: Japan

Nationality: Japanese, Born: 5.7.13.
Address: Stockholm, Skoparskatan 96 V, c/o Rydström, tel: 62 43 09. Sweden.
Diplomat accredited to the Japanese Legation in Stockholm; formerly accredited to London as an attaché. Visited Berlin in August 1944; suspect I.S.

H. YAMATO, Lt. Col. Kichinosuke

CIT: Japan

Photo Att
(Encl 2 ps)

Nationality: Japanese, Born: 3.3.03.
Address: Stockholm, Sveavägen 84, tel: Sweden, 30 32 32.

Attached to Japanese Military Attache's Office, Stockholm as "hors cadre" official; one of ONODERA's principal assistants in intelligence work; in 1938 employed in the SONFLO branch of MIYUI; in 1941 travelled through U.S. en route for Berlin; knows the U.S. and Germany well.

H. YAMATO, Kokoro

CIT: Japan

Photo Att
(Encl 2 ps)

Nationality: Japanese, Born:
Address:

Believed to be employed in the Japanese Legation, Stockholm; suspect I.S.

H. YAMATO, Shozo

CIT: Japan

Nationality: Japanese, Born: 15.8.02.
Address:

Accredited to Japanese Embassy, Berlin; arrived Sweden May 1944 with YAMAMOTO, Taro for purpose of taking YAMAMOTO, (a.v.) back to Berlin; suspect I.S., YAMATO.....

TATO, Tatsumatsu

CIT: Japan
Photo att.
(Encl 1 p 5)

Nationality: Japanese. Born: 14.8.02.
Address:

Attache to Japanese Embassy, Berlin(?);
visited Japanese Legation, Stockholm in
July 1943 on official business; subject

TATO, Major Tatsuya

CIT: Japan
Photo att.
(Encl 2 p 5)

Nationality: Japanese. Born: 7.10.03.
Address:

Technician; arrived Stockholm in
January 1944 to take up post in Military
Attache's Office as "hors cadre" official;
was in Great Britain for two years prior
to 1939; subject

SELINDER, (Frk.) Lund

CIT: Sweden

Nationality: Swedish. Born: 15.11.28.
Address: Stockholm, Sturegatan 37, Sweden
20 16 15.

Employed as a translator in the Japanese
Legation, Stockholm; subject

SEZAKI, Haruo

CIT: Japan
Photo att.
(Encl 2 p. Encl 2 p 6)

Nationality: Japanese. Born: 12.9.07 Kobo, Japan.
Address: Villingatan 24 1, Stockholm, Italy
20 19 14.

Assistant to MISHI. Iori (q.v.); arrived
Stockholm in October 1942 from Paris,
where he had been living since 1929;
accompanied by his wife, Kazuko; is an
accomplished artist; engaged in maritime
Intelligence work.

SHIMIZU, Totsuo

CIT: Japan
Photo att.
(Encl 2 p 5)

Nationality: Japanese. Born: 28.2.03.
Address:

Employee of Japanese Foreign Ministry
stationed in Berlin; visited Stockholm
in July 1943 accompanied by W. H. H. H. subject
Yoshi, O. L. Takashi, and O. L. E. Hisayuki;
last reported in Lisbon in May 1944
where he contacted Colonel MISHI.

SHIMIZU, (Lt. Col.) Takao

CIT: Japan

Nationality: Japanese. Born: 18.10.03 Tokyo, Japan
Address:

Appointed Assistant Military Attache,
Berlin v. c. f. March 1943; visited
Stockholm in May 1943; later appointed
Military Attache to Sofia; subject

STEGRE, Sixten K...

CIT: Sweden

Nationality: Swedish. Born: 14.2.23,
Address: Stockholm, Dobolngatan 29, Sweden
Employed as a driver in the Japanese
Legation, Stockholm; subject
/STEGRE,.....

H* STAMBERG, Sagn
CIT: Sweden

Nationality: ~~Swedish~~ Born:
address:

Contact of HOPE: Jiro (g.v.), *suspect I.S.*

H* SHIMIZU, Shigenis
CIT: Japan

Nationality: Japanese Born:
address:

In November 1942 visited Stockholm and Helsinki in company with HOPE, Jiro, MIYOSHI Kichiro, ~~Okada, Hiroo and YAMAGUCHI Shozo (g.v.)~~. *suspect I.S.*

H* SUGITA, Tsunokichi
CIT: Japan

Nationality: Japanese Born: 2.6.12
address: Stockholm, Grovaturgatan 50, Sweden
tel: 62 35 90.

Third Secretary at the Japanese Legation, Stockholm in 1943; in June 1944 left Stockholm for Berlin, accompanied by MIYOSHI Kichiro (g.v.) and may not have returned to his post. *suspect I.S.*

H* YOSHIDA, Goichi
CIT: Japan
Photo att.
(Encl 2 pc)

Nationality: Japanese Born: 5.11.17.
address: Stockholm, Strandvagen 57a, Sweden
tel: 60 55 73.

Arrived in Sweden in September 1943 to take up his post as attache at the Japanese Legation, Stockholm. *suspect I.S.*

H* Tsuda, Margareta
CIT: Sweden
Photo att. (Encl 2 pc)
Sus. I.F.

Nationality: Swedish Born:
address:

Wife of YUKITA Yoichi, believed to have been used by him for intelligence purposes. Sister of Admiral TAJI; also believed to be the mistress of General Paul SCHMIDT of the Ministry of Propaganda, Berlin, whom she visits frequently.

H* TAKEDA, Akira
CIT: Japan

Nationality: Japanese Born: 7.7.01 Tokyo, Japan
address:

Attached to the Japanese Embassy, Berlin; visited Sweden in April 1944 as a diplomatic courier; in 1941 was trade secretary at Vladivostok.

H* YOKUBO, Shojiro
CIT: Japan
Photo att.
(Encl 2 pc)

Nationality: Japanese Born: 1906.
address:

Believed to be employed at the Japanese Legation in Stockholm; *suspect I.S.*
YOKUBO.....

H. C. 10
YOKIYAMA, Tere

CIT: Japan

Nationality: Japanese Born: 22.2.08
Fukuoka.

Address:

Japanese Consul-General in Berlin from April 1944 to about September, when he is believed to have left his post; arrived in Sweden in May 1944, together with SAITO Shozo (q.v.) in order to take SAKI IRI (q.v.) back to Berlin; third secretary to the Japanese Legation, Switzerland in 1941; visited Holland in February 1944, where he is believed to have recruited an agent.

H. TONURA, Yoji ✓

CIT: Japan

Nationality: Japanese Born: 27.1.15 Tokyo, Japan
Address:

Attached to the Japanese Legation, Helsinki; where he has resided since August 1943; visited Sweden May 1944; believed to have left Japan about June 1942. *suspect S.*

H. TOO, Kenichi

CIT: Japan

Nationality: Japanese Born: 30.3.13
Address: (1943) Lisbon, Avenida du Berno 50.

Secretary at the Japanese Legation, Stockholm; arrived Sweden in September 1944 to take up his appointment; travelled with H.G.E. Trossason, H. Oki, Hight and WIDO Ryuzoh (q.v.) in 1943 was third secretary at the Japanese Legation, Lisbon. *suspect S.*

H. TOPELIUS, Agneta S.

CIT: Sweden

Nationality: Swedish Born:
Address: Stockholm, Ostomalgatan 18,
c/o Halenius, toll 10 07 10.

A Stockholm correspondent of "Asahi"; presumably works under the direction of N. TAJIMA Shinichiro; in touch with HIGUCHI Fukuzi (q.v.), an important intell. officer.

H. TSUCHIYA, Jun

CIT: Japan

Nationality: Japanese Born: 22.7.02
Address:

2nd Secretary at the Japanese Legation, Stockholm; believed to be a career diplomat but nevertheless engaged in intelligence work; succeeded H. TSUSHITA Shozo; arrived Sweden in February 1944 and there are indications that he brought important material and possibly funds with him from Japan, where he is believed to have left in November 1943 approximately; visited Berlin in June 1944.

MICUDA,

UCHIDA, Fujio ✓
cit. Japan

Nationality: Japanese. Born: 22.9.09.
Address:

Secretary at the Japanese Embassy, Berlin;
attended Intelligence Conference in Berlin
in January 1943; arrived in Sweden in
October 1944.

Ueda, Saburo ✓
cit. Japan

Nationality: Japanese. Born: 12.4.05.
Address:

Accredited to the Japanese Legation,
Stockholm since August 1944; formerly
attached to Japanese Military Attaché's
Office, Helsinki, where he was employed
to contact intelligence sources; also
speaks Swedish and French; receives a
salary of 1,200 Kronor per month; has
acted as courier between Helsinki, Berlin
and Stockholm.

UROSHIRO, Masao
cit. Japan
Photo Att.
(Encl 2 pc)

Nationality: Japanese. Born:
Address: Stockholm, Furusundagatan 7, Sweden;
tel: 67 26 72.

Formerly correspondent of "Yamuri Shinbun"
in Stockholm; left for Berlin in autumn
of 1943; now believed to be in charge of
Japanese propaganda in Berlin; also
thought to be an espionage agent; re-
placed in Stockholm by KITAJIMA Hiroshi;
contacted Dr. TERLJEWSKI (q.v.); has
visited Finland.

URIU, Kataro ✓
cit. Japan
Photo Att.

Nationality: Japanese. Born: 13.12.13.
Address:

Secretary at the Japanese Legation in
Stockholm; arrived in Sweden in January
1944; attached to the Legation in London
in 1941.

UJIWA, Koichi (ps)
cit. Japan
Photo Att.
(incl: 1 pc)

Nationality: Japanese. Born: 10.11.09.
Address: (1943) Stockholm, Brantings-
gatan 24, tel: 60 25 81.

Formerly Assistant Naval Attaché to
Stockholm; transferred to Berlin in
January 1944, after having been in Stock-
holm since 1942; naval officer; is not
in agreement with Japanese collaboration
and dependence on Germany, whose cause he
considers lost; pessimistic about Japan
and her conduct of the war; when in
Stockholm contacted Elicabeth HONJQUIST,
Margareta TILL, and Inge GILSON (q.v.);
the last-named is believed to be his
mistress.

UJIWA.....

H. MATSUME, Shinichiro
CIT: Japan
Photo Att.
(Encl 2 p)

Nationality: Japanese. Born: 16.3.00.
Address: Velhullavägen 57, c/o Bagman, Stockholm, Sweden
Tel: 34 52 40.
Stockholm correspondent of "Asahi";
visited Berlin in October 1943 and August 1944, subject.

H. MATSUME, Yoshio
CIT: Japan
Photo Att.
(Encl 2 p)

Nationality: Japanese. Born: 19.8.10.
Address:
Employee of Japanese Foreign Ministry, accredited to Japanese Embassy, Berlin; visited Sweden July 1943, accompanied by SHIMIZU, Tetsuo, OL. Takashi and OHARA Hisayuki; Intelligence Officer.

M. MURAKAMI

Nationality: Japanese. Born:
Address:
Consul-General Hamburg; appointed to Stockholm to succeed KOM. Jotaro (q.v.) in November 1944; to hold rank of 1st Secretary.

H. MURAKAMI, Takaji
CIT: Japan
Photo Att.
(Encl 2 p)

Nationality: Japanese. Born: 5.10.10.
Address: Stockholm, Karlavägen 55 IV, c/o Sh. Mura, Tel: 60 55 22.
Employee of Japanese Legation, Stockholm; subject.

H. MURAKAMI, Shizuo
CIT: Japan
Photo Att.
(Encl 2 p)

Nationality: Japanese. Born: 22.1.10.
Address: Stockholm, Hotel Holma, Sweden
3rd Assistant to Japanese Naval Attache, Stockholm; arrived in Sweden in October 1943; visited Berlin in June 1944; subject.

H. MURAKAMI, Toshio
CIT: Japan

Nationality: Japanese. Born:
Address:
Attache to the Japanese Legation, Helsinki (1943); subject.

H. YOKOYAMA, Zen
CIT: Japan

Nationality: Japanese. Born: 7.8.11.
Address:
Clerk to the Japanese Embassy, Berlin; Intelligence Officer; visited Stockholm in October 1944 to see OHARA (q.v.).

H. YOSHIDA, Lt. Col.

Nationality: Japanese. Born:
Address:
Attached to Japanese Military Attache's Office, Berlin; technician; visited Stockholm in September 1943 with KIKUCHI, Toshida (q.v.).
/YOSHIDA.....

*
YOSHIZUMI, (Major) Mutsumasa

CIT: Japan
Photo Att.
(encl 2 p 1)

Nationality: Japanese, Born: 22.2.04 Tokyo, Jy.
Address:

Believed to be attached to the Military
Attache's Office, Berlin Military.
Particulars: visited Stockholm in March 1944
to confer with OKUBO, Akoto; accompanied
by KAMEI, Shiro (q.v.); reported in
Lisbon in October 1943 and later the same
month visited Madrid. *suspect I.S.*

YOSHIOKI, Toshio

CIT: Japan

Nationality: Japanese. Born: 12.6.14 Kochi.
Address:

Believed to have been accredited to the
Japanese Legation, Stockholm but was killed
in a plane crash en route in November 1944;
formerly in Lisbon; travelled on passport
No. 011200 issued Borneo 20.5.41.

-----00-----

75



ABE Kenichi

()



ASUTBA Noriyuki

(Enid PI)



MIYARA Koichi

(Enid p-)



() 14627





IWATA Saburo
(Encl 1 p 1)



KIIOGAWA Akira
(Encl 1 p 8)



KISHIDA Torazo
(Encl 1 p 8)



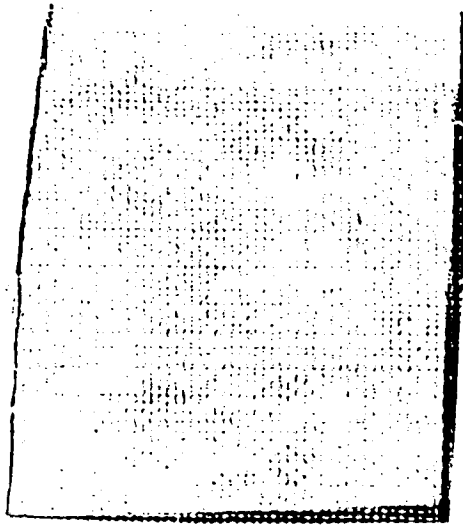
KODA Jotaro



KOHDO Eiichi
(Encl 1 p 1)



MAKIMURA Kiyoshi
(Encl 1 p 1)



MOSHITA Teru
(Encl 1 p.11)



OHARA Hisayuki
(Encl 1 p.13)



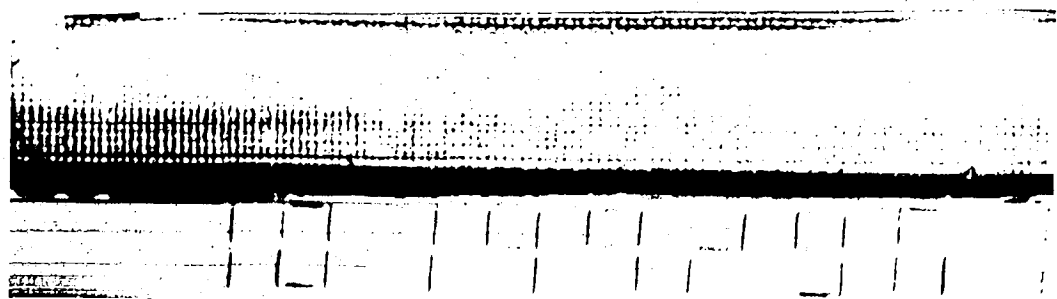
OHODERA Makoto
(Encl 1 p.14)



OTA Takechi
(Encl 1 p.15)



SAITO Masaru
(Encl 1 p.16)





SASAYAMA Sadao
(Encl 1 p17)



SATO Tatsuya
(Encl 1 p15)



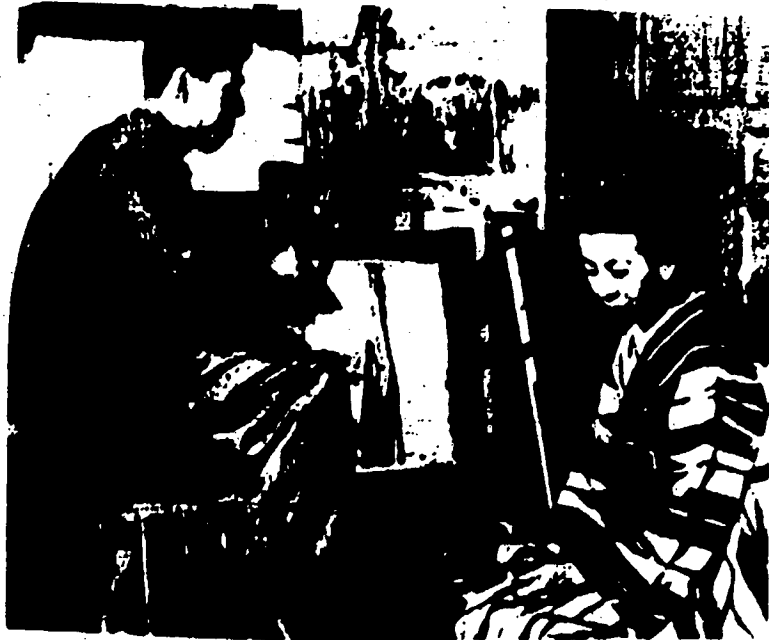
SATO Tatsuya
(Encl 1 p15)



SATO Kazuro
(Encl 1 p17)



SATO Tamotsu
(Encl 1 p18)



SASAYAMA Sadao
(Encl 1 p15)



SUZUKI Haruo
(Encl 1 p18)



SHIMAMURA Tetsuo
(Encl 1 p18)



SUZUKI Shiro
(Encl 1 p19)



SAKURAI Goichi
(Encl 1 p19)



SHIMAMURA Tetsuo
(Encl 1 p21)



SUZUKI Haruo
(Encl 1 p21)



(Encl 1 p 22)
WAKUTA Kofu, Elisabeth HOLMQUIST and
Margareta TAMM
(Encl 1 p 19)



WATANABE Shinichiro
(Encl 1 p 22)



WATANABE Yoshio
(Encl 1 p 22)



YAMAUCHI Kazuo
(Encl 1 p 22)



(Encl 1 p 22)



(Encl 1 p 22)

