

SEE 201 FOLDER FOR ORIGINAL PHOTO(S)



**NAZI WAR CRIMES DISCLOSURE ACT**

- EXEMPTIONS Section 3(b)
- (2)(A) Privacy
  - (2)(B) Methods/Sources
  - (2)(G) Foreign Relations

Declassified and Approved for Release  
by the Central Intelligence Agency  
Date: 2005

SECRET

PHOTO MOUNTING SHEET

SEE 201 FOLDER FOR ORIGINAL PHOTO(S)



377 J/00

SECRET (When Filled In)

SECRET  
CLASS. BY 1041

23

SECRET

PHOTO MOUNTING SHEET

SEE 201 FOLDER FOR ORIGINAL PHOTO(S)



7

4

SECRET (When Filled In)

PHOTO MOUNTING SHEET

ORIGINAL PHOTOS CAN BE OBTAINED BY CALLING IP/CFS



FORM 3768 USE PREVIOUS EDITIONS 3-77

SECRET (When Filled In)

CL. BY: C J 1041

SECRET

PHOTO MOUNTING SHEET

ORIGINAL PHOTOS CAN BE OBTAINED BY CALLING IP CFS



FORM 5-77

7

U

SECRET (When Filled In)

PHOTO MOUNTING SHEET

ORIGINAL PHOTOS CAN BE OBTAINED BY CALLING IP/CFS



FORM 1  
5-54

SECRET

PHOTO MOUNTING SHEET

SEE 201 FOLDER FOR ORIGINAL PHOTO(S)



SECRET

PHOTO MOUNTING SHEET

SEE 201 FOLDER FOR ORIGINAL PHOTO(S)



7  
4



SECRET (When Filled In)

PHOTO MOUNTING SHEET

SEE 201 FOLDER FOR ORIGINAL PHOTO(S)



FORM 3768 USE PREVIOUS EDITIONS 3-72

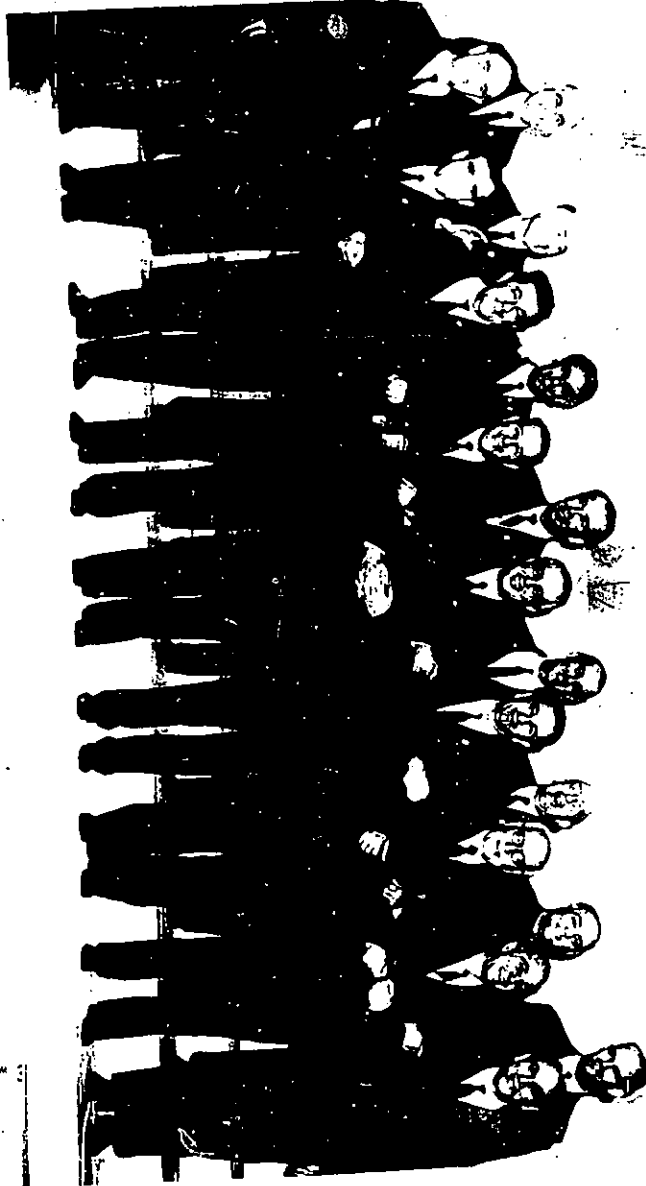
SECRET (When Filled In)

FORM 3768 USE PREVIOUS EDITIONS 3-72

SECRET (When Filled In)

PHOTO MOUNTING SHEET

SEE 201 FOLDER FOR ORIGINAL PHOTO(S)



FORM 1-77

SECRET (When Filled In)

PHOTO MOUNTING SHEET

7

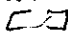
SEE 201 FOLDER FOR ORIGINAL PHOTO(S)



4

FORM 3768 USE PREVIOUS EDITIONS 1-77

SECRET (When Filled In)

EX-100-100-100  
FILE BY 

1041

SECRET (When Filled In)

PHOTO MOUNTING SHEET

SEE 201 FOLDER FOR ORIGINAL PHOTO(S)



FORM 3768 USE PREVIOUS EDITIONS

SECRET (When Filled In)

FORM 3768

SECRET (When Filled In)

PHOTO MOUNTING SHEET

7

SEE 201 FOLDER FOR ORIGINAL PHOTO(S)



FORM 3  
3-77