

ROUTING AND RECORD SHEET

FROM:				COMMENTS						
EE/A										
TO	ROOM NO.	DATE		OFFICER'S INITIALS						
		RECEIVED	FORWARDED							
1. RID/DP		1/9								
2.										
3. EE/A RPK	2309 K									
4.										
5.										
6.										
7.										
8.										
9.										
10.										
11.										
12.										
13.										
14.										
15. RI/AN				RE						
16.										
17.										
18.										
COORDINATING OFFICERS				AUTHENTICATING OFFICER						
NAME		OFFICE		NAME		TITLE				
				[Signature]		EE/A				
				RELEASING OFFICER						
				[Signature]		TITLE				
						C/EE/A				
ENCLOSURE		ABSTRACT <input checked="" type="checkbox"/>		FILE NUMBER						
		INDEX		6-124-2712 - filed						
DATE MICROFILMED				DOCUMENT DATE		DOCUMENT NUMBER				
				1 SEP 1958		BAVW-13411				

SECRET

RECORD COPY

SECRET

DECLASSIFIED AND RELEASED BY
CENTRAL INTELLIGENCE AGENCY
SOURCE METHOD EXEMPTION B2B
NAZI WAR CRIMES DISCLOSURE ACT
DATE 2007

GREROOND/SUPP

DISPATCH		CLASSIFICATION SECRET	DISPATCH SYMBOL AND NO. NAV-13411
TO INFO	Chief of Station, Vienna Attn: Chief of Base, Salzburg		HEADQUARTERS FILE NO. 6-124-27/2
FROM	Chief, EE		DATE 1 SEP 1959
SUBJECT	CHRONO/RELEASE/Support Medical Equipment for GELANON-1		RE: "43-3" - (CHECK "X" ONE)
			<input type="checkbox"/> MARKED FOR INDEXING
ACTION REQUIRED	See Para. 2.		<input checked="" type="checkbox"/> NO INDEXING REQUIRED
REFERENCE(S)	INDEXING CAN BE JUDGED BY QUALIFIED HQ. DESK ONLY		

NASA-5226, dated 17 August 1959

1. Although Headquarters has no objection to assisting GELANON-1 in obtaining a "Rochester Bedside Lab," which would be an appropriate termination bonus, we do perceive a possible security problem in KUBARK's furnishing the agent the "Lab" if suitable cover for his having acquired it cannot be devised, particularly since the "Lab" is not available in Austria and normally would have to be imported.

2. If a suitable cover story has been arranged, please advise Headquarters of the details so that we can take immediate action to obtain the item in PHPRIME. However, if a suitable cover story cannot be devised, it is suggested that GELANON-1 be instructed to order the "Lab" from an Austrian medical supply house himself and that KUBARK assume part or all of the expense. Admittedly the cost of the "Lab" procured in this manner would probably be somewhat higher and the length of time involved in obtaining it longer. However, there appears to be no necessity for furnishing the agent the "Lab" immediately, or even prior to his termination, and if GELANON-1 placed the order for the "Lab" himself, he would be able to furnish his colleagues (and Austrian authorities) with a very logical explanation should they evince interest in the item and in the method of acquiring one.

3. We are returning the pamphlet which describes the "Lab" should you decide to have GELANON-1 order it. Therefor copies have been made for Headquarters use should a suitable cover story be devised and you still desire that the item be obtained in PHPRIME.

Attachment: **HERNWITH**
As Stated

1 September 1959

Distribution:
3-Vienna (w/o Attach.)
2-Salzburg (w/Attach. H/W)
✓1-RI (w/o Attach.)
1-EE/A (w/o Attach.)
1-EE/A Chrono (w/o Attach.)

COPY FILED IN

CS COPY

6-124-27/2

FORM 10-57 53 (40)	USE PREVIOUS EDITION. REPLACES FORMS 51-28, 51-28A AND 51-29 WHICH ARE OBSOLETE.	CLASSIFICATION SECRET	<input type="checkbox"/> CONTINUED	PAGE NO. 1
--------------------	--	---------------------------------	------------------------------------	----------------------

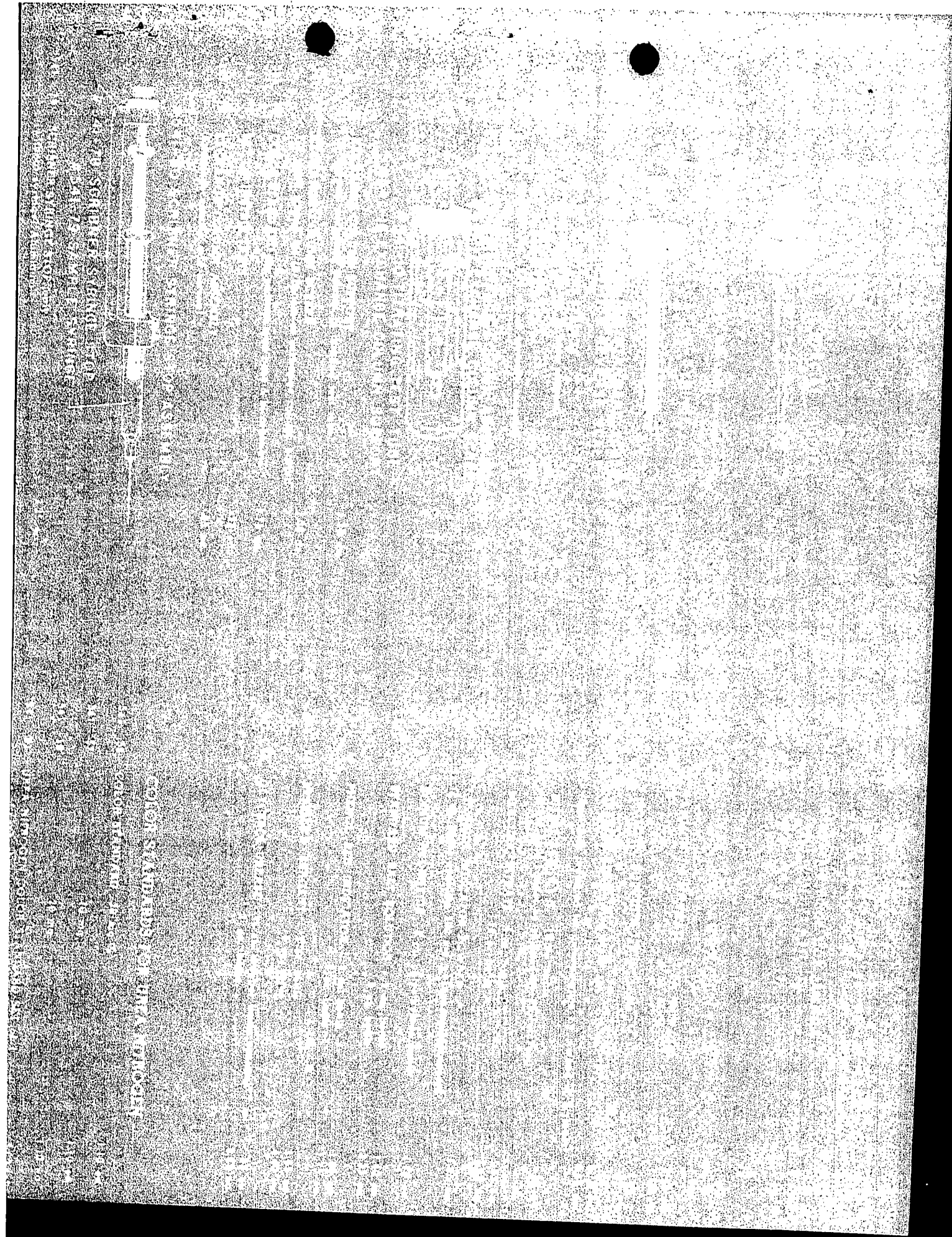
RECORD COPY

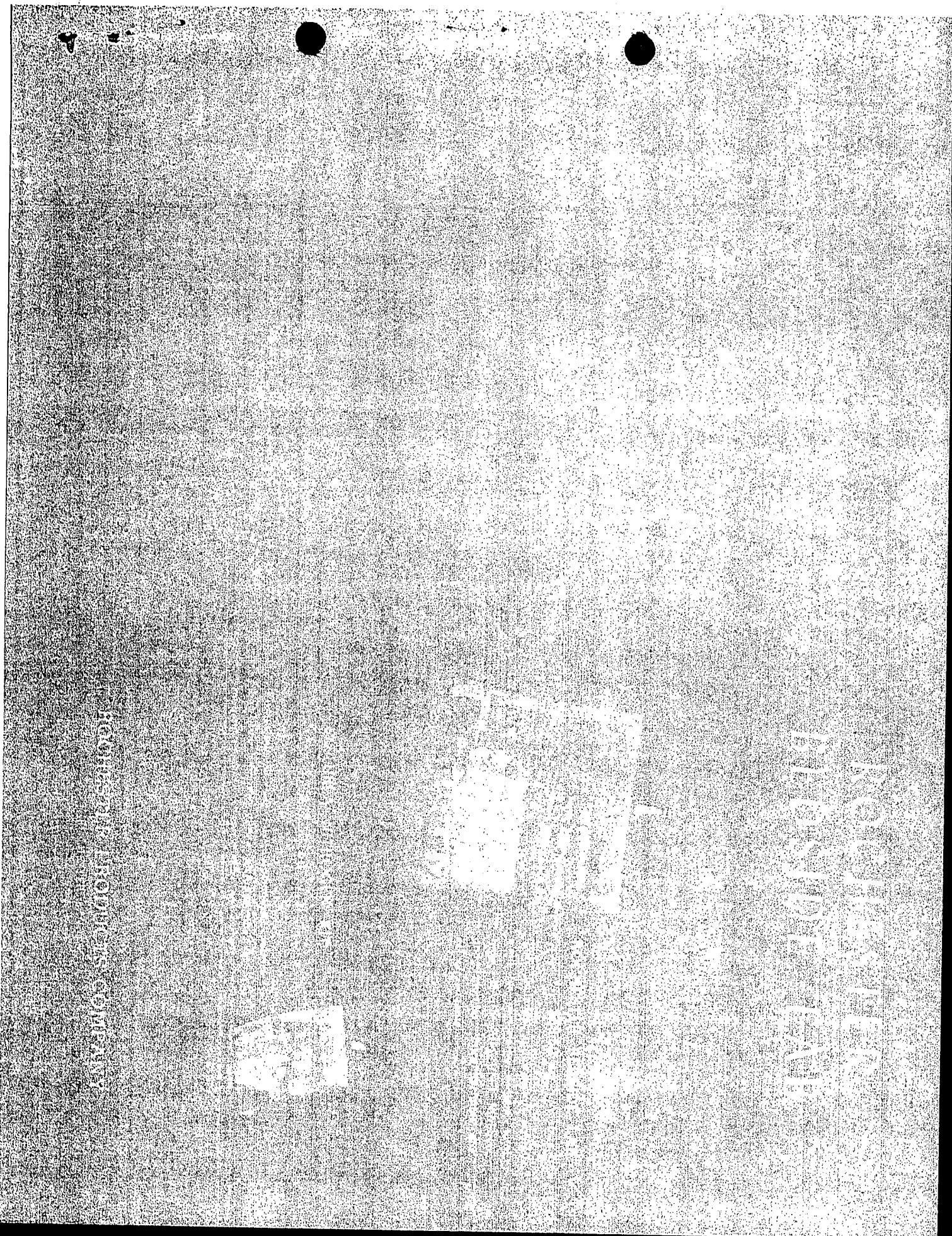
RECORD COPY

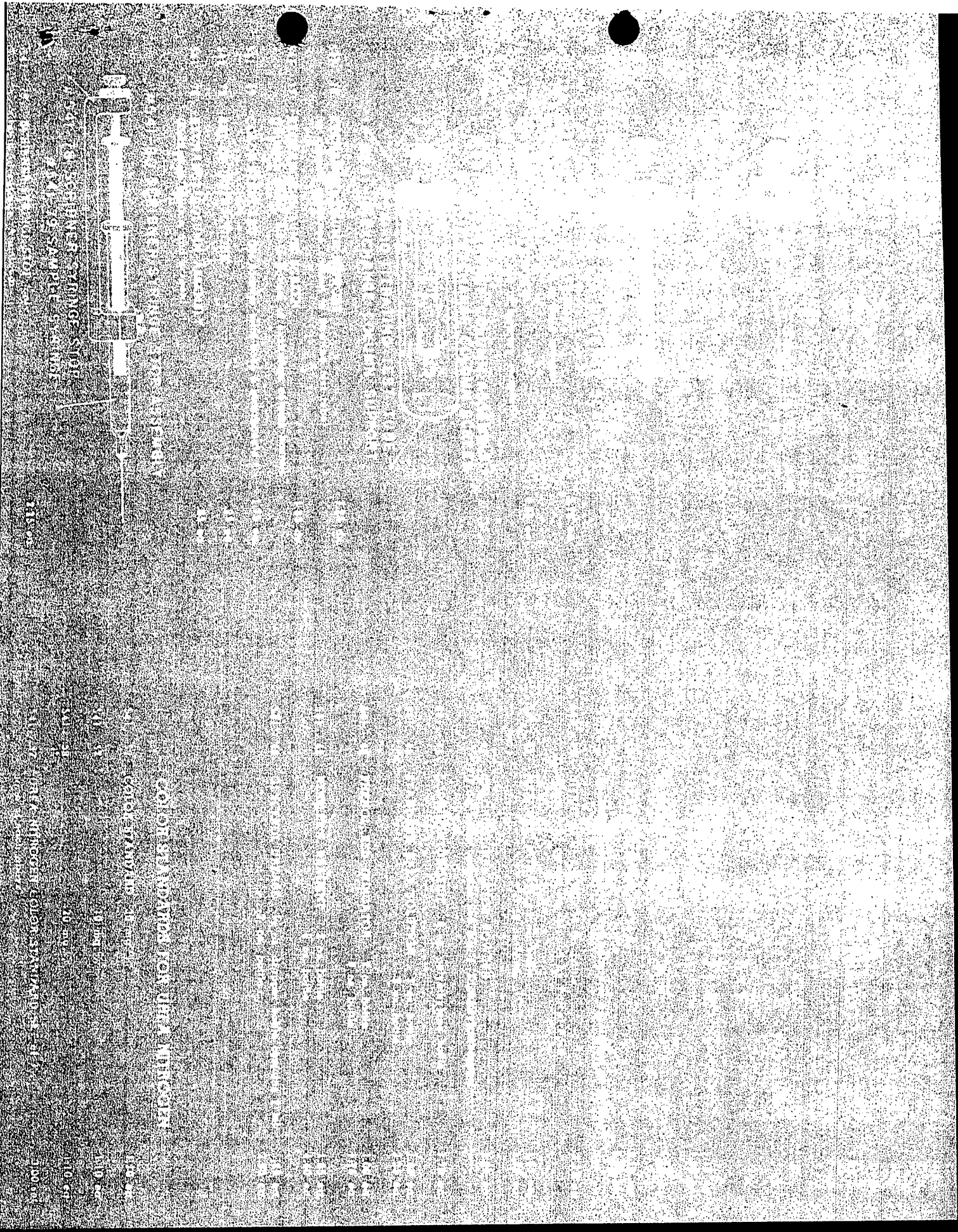
HOCHSIEBEL PRODUKTIONSGES. COMPAHN

HOCHSIEBEL PRODUKTIONSGES. COMPAHN







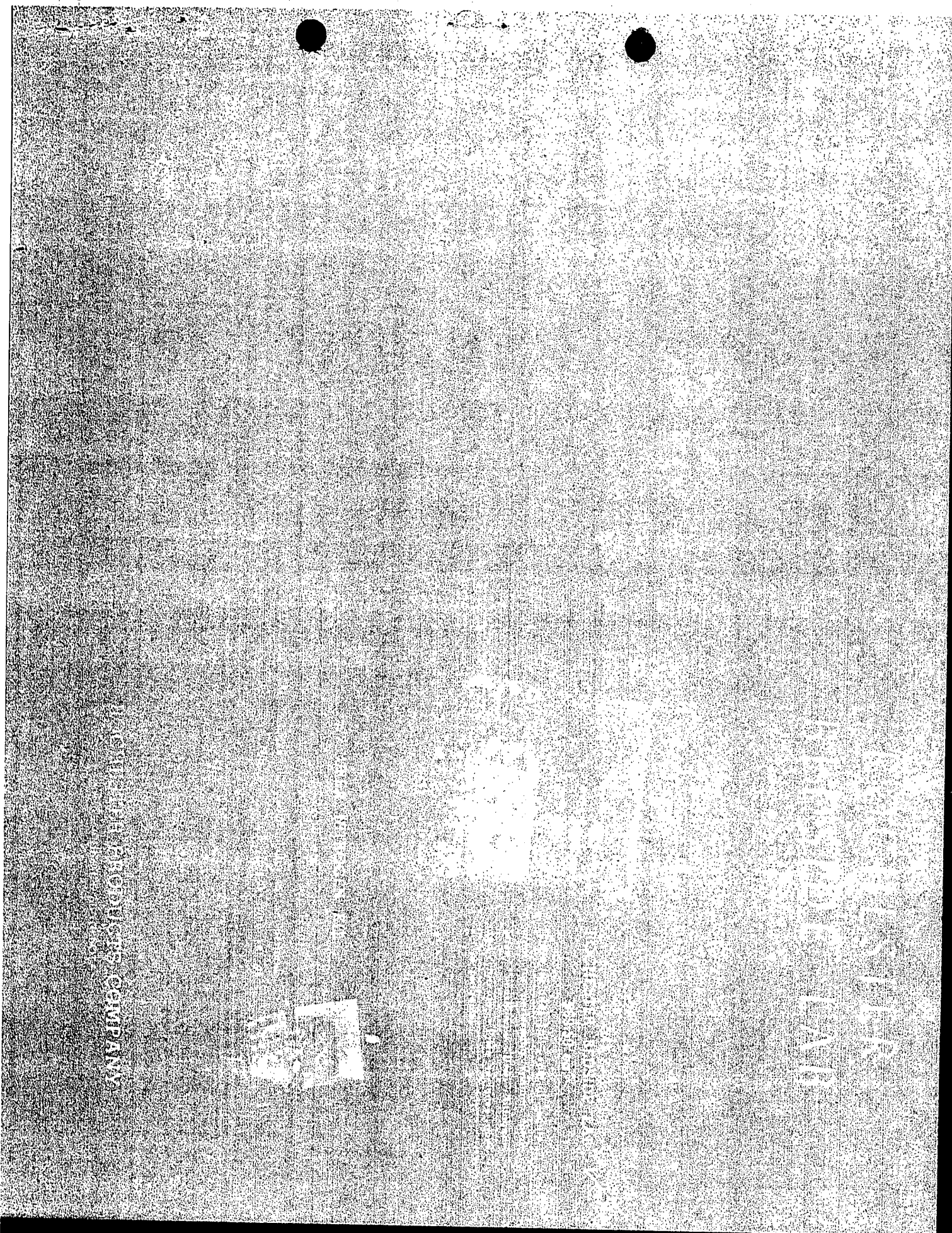


UNITED STATES DEPARTMENT OF COMMERCE
BUREAU OF ECONOMIC ANALYSIS
WASHINGTON, D. C. 20540

INDUSTRIAL AND AGRICULTURAL
COMMISSION
WASHINGTON, D. C. 20540

NO. 10-54
AID-2
10-54

UNITED STATES DEPARTMENT OF COMMERCE
BUREAU OF ECONOMIC ANALYSIS
WASHINGTON, D. C. 20540





STAINLESS STEEL

SCALE INJECTION TEST TUBE
#4410 EXCHANGE COLUMN SUPPORT



SCALE INJECTION TEST TUBE
#4410 EXCHANGE COLUMN SUPPORT



SCALE INJECTION TEST TUBE
#4410 EXCHANGE COLUMN SUPPORT

SCALE INJECTION TEST TUBE
#4410 EXCHANGE COLUMN SUPPORT

SCALE INJECTION TEST TUBE
#4410 EXCHANGE COLUMN SUPPORT

SCALE INJECTION TEST TUBE
#4410 EXCHANGE COLUMN SUPPORT

SCALE INJECTION TEST TUBE
#4410 EXCHANGE COLUMN SUPPORT

SCALE INJECTION TEST TUBE
#4410 EXCHANGE COLUMN SUPPORT

SCALE INJECTION TEST TUBE
#4410 EXCHANGE COLUMN SUPPORT

SCALE INJECTION TEST TUBE
#4410 EXCHANGE COLUMN SUPPORT

SCALE INJECTION TEST TUBE
#4410 EXCHANGE COLUMN SUPPORT

SCALE INJECTION TEST TUBE
#4410 EXCHANGE COLUMN SUPPORT

SCALE INJECTION TEST TUBE
#4410 EXCHANGE COLUMN SUPPORT

SCALE INJECTION TEST TUBE
#4410 EXCHANGE COLUMN SUPPORT

SCALE INJECTION TEST TUBE
#4410 EXCHANGE COLUMN SUPPORT

SCALE INJECTION TEST TUBE
#4410 EXCHANGE COLUMN SUPPORT

SCALE INJECTION TEST TUBE
#4410 EXCHANGE COLUMN SUPPORT

SCALE INJECTION TEST TUBE
#4410 EXCHANGE COLUMN SUPPORT

SCALE INJECTION TEST TUBE
#4410 EXCHANGE COLUMN SUPPORT

SCALE INJECTION TEST TUBE
#4410 EXCHANGE COLUMN SUPPORT

SCALE INJECTION TEST TUBE
#4410 EXCHANGE COLUMN SUPPORT

SCALE INJECTION TEST TUBE
#4410 EXCHANGE COLUMN SUPPORT

SCALE INJECTION TEST TUBE
#4410 EXCHANGE COLUMN SUPPORT

SCALE INJECTION TEST TUBE
#4410 EXCHANGE COLUMN SUPPORT

SCALE INJECTION TEST TUBE
#4410 EXCHANGE COLUMN SUPPORT