

1707 550950  
TO WHEIM  
DE WTE 321



LBJ LIBRARY.  
Mandatory Review  
Case # NLJ 83-211  
Document # 43

43

FROM WALT ROSTON  
TO THE PRESIDENT  
CITE CAP20234

1968 JAN 11 22 41

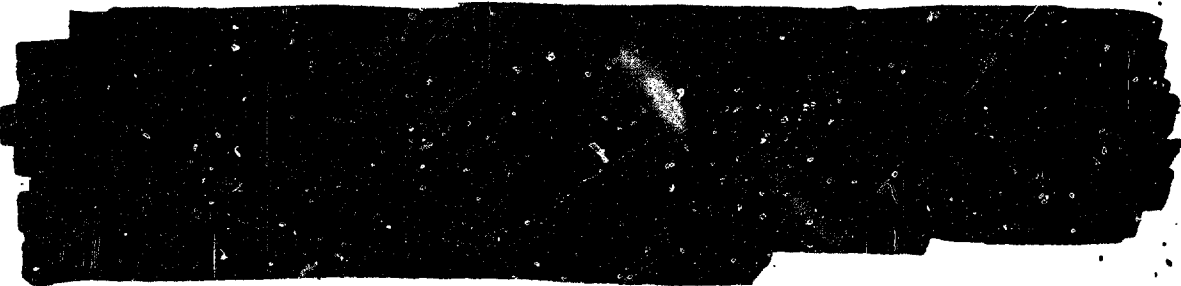
JANUARY 11, 1968

HEREWITH A CIA SUMMARY OF A LONGER TEXT ON THE ENEMY  
THREAT TO KHE SANH.

IN THE PAST SEVERAL WEEKS THERE HAVE BEEN A NUMBER  
OF INDICATIONS THAT THE ENEMY IS BUILDING UP ITS FORCES  
IN THE LAOTIAN PANHANDLE WEST OF THE DEMILITARIZED ZONE.

THE TARGET PRIMARILY THREATENED BY THESE FORCES APPEARS  
TO BE THE ALLIED BASE AT KHE SANH IN WESTERN QUANG TRI  
PROVINCE OF SOUTH VIETNAM. ENEMY RECONNAISSANCE AND PROBING  
ACTIVITY NEAR KHE SANH HAS INCREASED MARKEDLY IN THE LAST FEW  
WEEKS.

THE COMMUNISTS COULD BE USING THE TIME BETWEEN NOW AND THE TET  
HOLIDAYS TO COMPLETE THEIR CONCENTRATION AROUND KHE SANH IN  
PREPARATION FOR AN OFFENSIVE AFTER TET.



THE COMMUNISTS COULD MUSTER A TOTAL FORCE OF OVER 20,000  
SHOULD THEY DECIDE AT SOME POINT TO COMMIT ALL PERSONNEL  
FROM THE ELEMENTS OF THE FOUR DIVISIONS NOW IN THE GENERAL  
AREA. THIS IS CONSIDERABLY MORE THAN THEY WOULD NEED MERELY  
TO TAKE KHE SANH. THEIR PRIMARY OBJECTIVE IN ATTACKING KHE  
SANH WOULD BE TO DRAW US REINFORCEMENTS INTO THE AREA, TIE  
THEM TO STATIC DEFENSIVE POSITIONS, AND INFLICT MAXIMUM  
CASUALTIES ON US FORCES OVER A PERIOD OF TIME.

THE BUILDUP OF FORCES IN LAOS AND WESTERN QUANG TRI  
PROVINCE ALSO STRENGTHENS NORTH VIETNAMESE DEFENSE  
OF THE LAOS CORRIDOR.



DTG 112147Z JAN 68



Approved for Release  
Date 9 OCT 1984

*Profile*  
68 JAN 11 PM 5:55  
THURSDAY

1.3(a)(4)  
C

1.3(a)(4)  
C