

PHOTOGRAPHIC INTERPRETATION REPORT



[REDACTED]  
CONSTRUCTION  
TECHNIQUES AND  
PROCEDURES  
ASSOCIATED WITH  
THE TYPE IIID ICBM  
LAUNCH SILO

[REDACTED]  
OCTOBER 1966  
COPY 111  
16 PAGES

25X1

[REDACTED]

25X1

Declass Review by NIMA / DoD

GROUP 1 EXCLUDED FROM  
AUTOMATIC DOWNGRADING  
AND DECLASSIFICATION

25X1

Approved For Release 2003/05/15 : CIA-RDP99T01396R000100100001-1

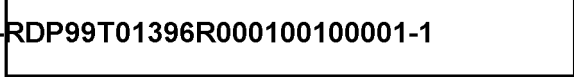
Approved For Release 2003/05/15 : CIA-RDP99T01396R000100100001-1

25X1



Approved For Release 2003/05/15 : CIA-RDP99T01396R000100100001-1

~~TOP SECRET~~



25X1

PHOTOGRAPHIC INTERPRETATION REPORT

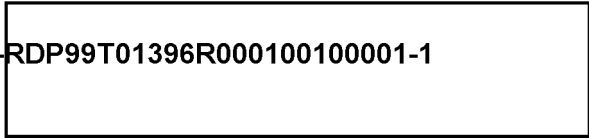
**CONSTRUCTION TECHNIQUES  
AND PROCEDURES  
ASSOCIATED WITH  
THE TYPE IIID ICBM LAUNCH SILO**

OCTOBER 1966

NATIONAL PHOTOGRAPHIC INTERPRETATION CENTER

Approved For Release 2003/05/15 : CIA-RDP99T01396R000100100001-1

~~TOP SECRET~~

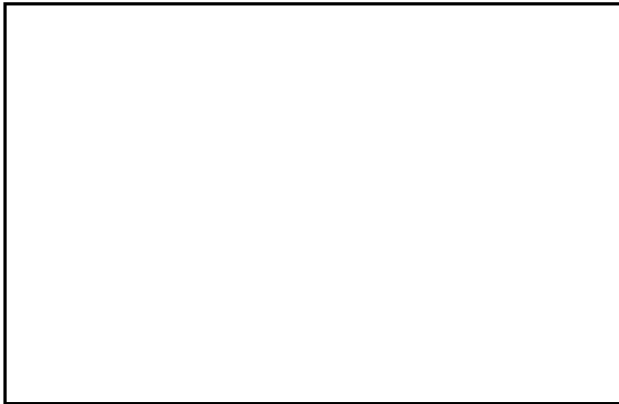


25X1

25X1

TOP SECRET

Continuing study of [redacted] photography of the Kostroma, Olovyannaya, and Svobodnyy ICBM Complexes indicates that the headworks of the Soviet Type IIID ICBM launch silo is probably prefabricated. Numerous square, hollow objects are frequently observed in the vicinity of a silo under construction. These objects are probably prefabricated sections of the silo headworks.



The square objects have been observed in the railhead and storage area at the Olovyannaya ICBM Complex. They were stacked on the ground and on a flatcar [redacted]. At Launch Site 66, at Olovyannaya, a Type IIID silo liner was identified, for the first time, [redacted]. The liner was upright and protruding from the silo coring. No evidence of concrete forms was observed in the area; however, the square objects were stacked beside a crane which was working over the silo. At Launch Site 70, Olovyannaya (Figures 1 and 2), [redacted] revealed a silo coring being excavated by a crane. Numerous square objects were visible in the vicinity of the site. There was no evidence of a silo headworks. On the same mission an emplaced silo liner was visible at Site 79, Olovyannaya (Figures 3 and 4). A crane was working over the liner and the square objects were scattered about the silo excavation. Construction of the silo headworks had not started. The mission further revealed that the silo head-

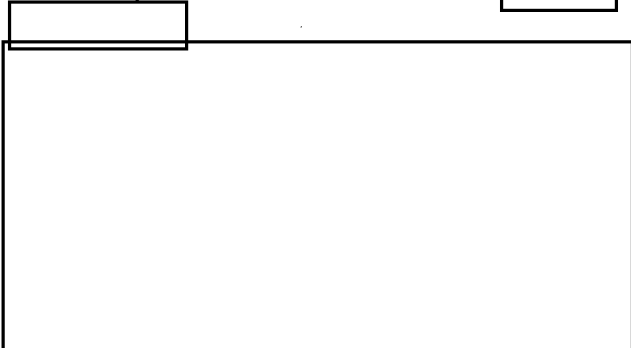
works at Site 72 (Figures 5 and 6) was under construction and that it probably consisted of 2 levels, one being only partially complete. Six square objects were visible around the silo, and a probable crane was on the south lip of the silo excavation.

[redacted] coverage [redacted] of the Svobodnyy ICBM Complex revealed at Site 21 a silo headworks under construction (Figures 7 and 8) which is definitely in 2 levels. It appears that the top level is about half completed, with lines which indicate that it is composed of sections. A possible crane is on the lip of the silo excavation. Possible square objects are visible in the vicinity of the silo.

[redacted] Kostroma ICBM Complex revealed what is probably an emplaced silo liner in the silo excavation at Site 9 (Figure 9). Dark, tapered lines radiate from the liner to the side of the silo excavation and may indicate sections missing from the first level of the silo headworks. Neither a crane nor the square objects were visible on this fair-interpretability photography.

A wedge-shaped gap is visible in the silo headworks at Site 72, Olovyannaya (Figure 10), [redacted]. One square, hollow object is visible approximately 50 feet southeast of the silo. The silo liner is visible in the headworks.

Measurements obtained from the Technical Intelligence Division, NPIC, indicate that the square objects measure approximately [redacted]



TOP SECRET

25X1

Approved For Release

TOP SECRET

2003/05/15 CIA RDP99T01396R000100100001-1



FIGURE 1. SILO CONSTRUCTION AT LAUNCH SITE 70, OLOVYANNAYA ICBM COMPLEX.

[Redacted]

[Redacted]

Approved For Release 2003/05/15 : CIA-RDP99T01396R000100100001-1

TOP SECRET

Approved For Release 2003/05/15 : CIA-RDP99T01396R000100100001-1

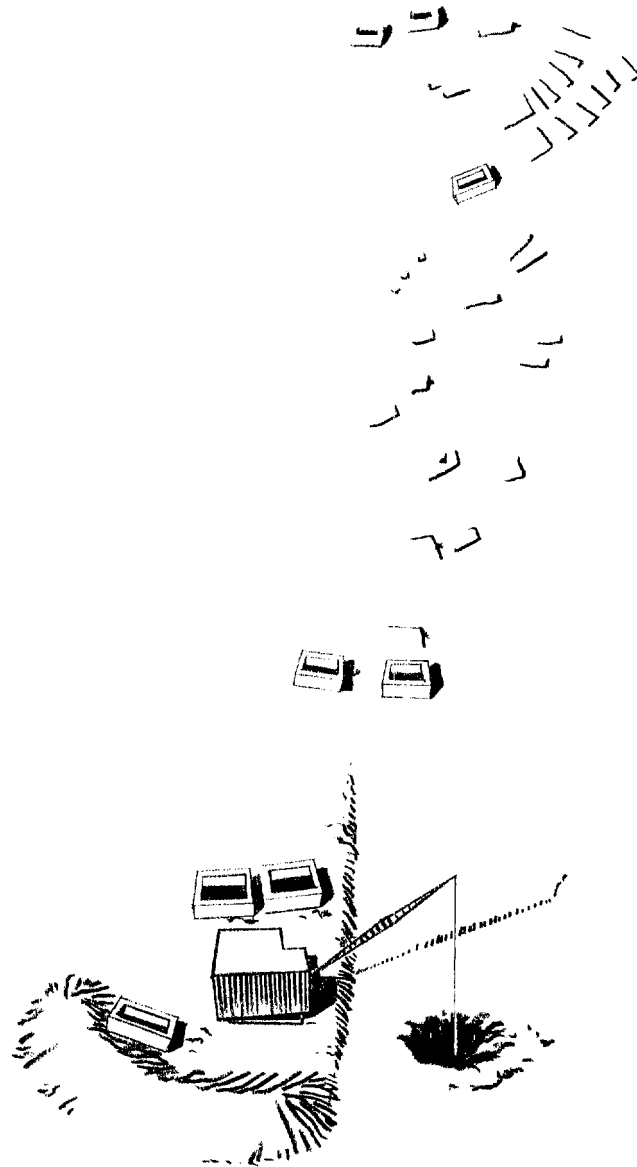


FIGURE 2. ARTIST'S CONCEPT OF SILO CORING BEING EXCAVATED AT SITE 70, OLOVYANNAYA.

[Redacted]

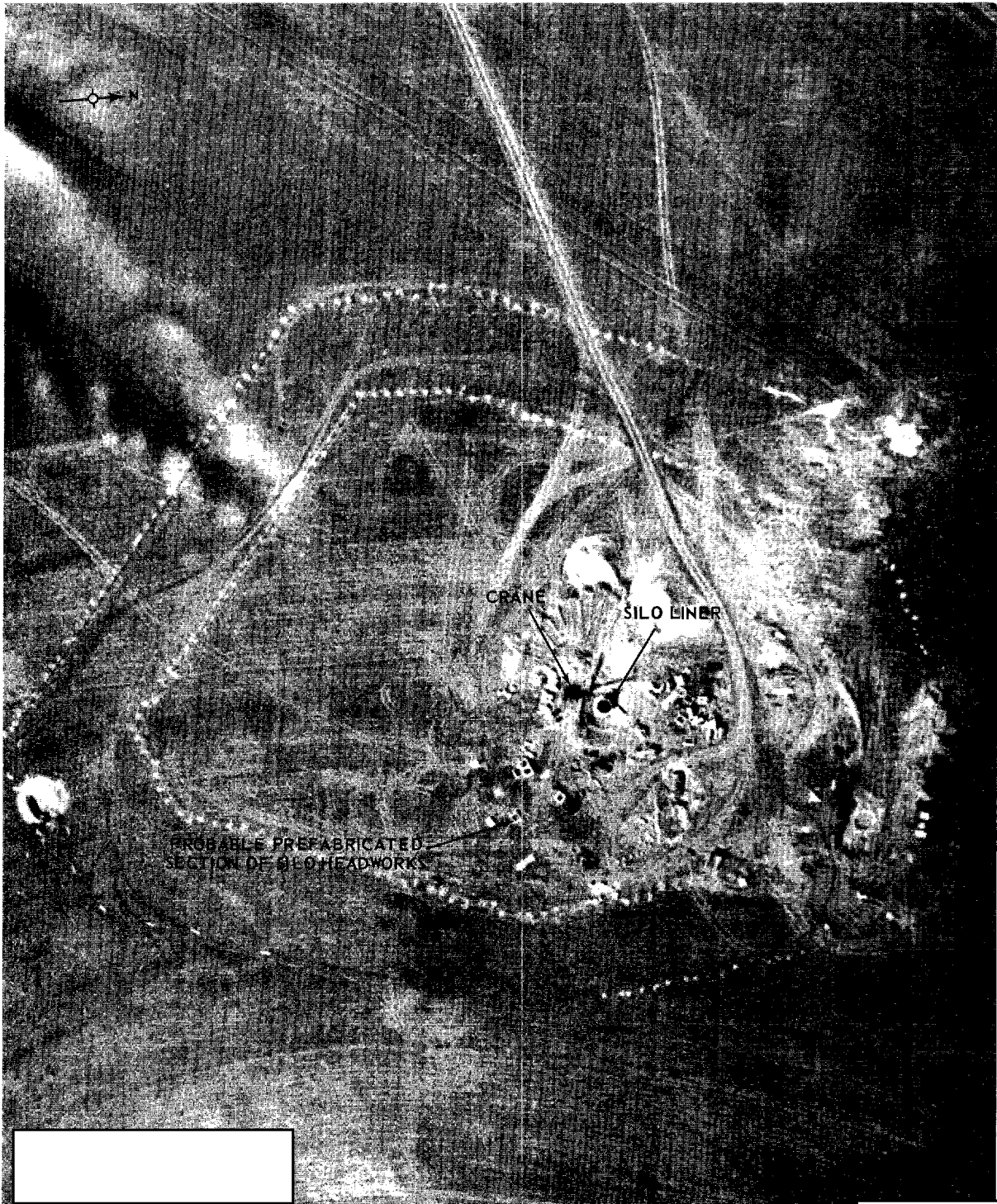
TOP SECRET

Approved For Release 2003/05/15 : CIA-RDP99T01396R000100100001-1

25X1

TOP SECRET

25X1



25X1D

FIGURE 3. SILO CONSTRUCTION AT LAUNCH SITE 79, OLOVYANNAYA.

25X1

TOP SECRET

25X1



TOP SECRET

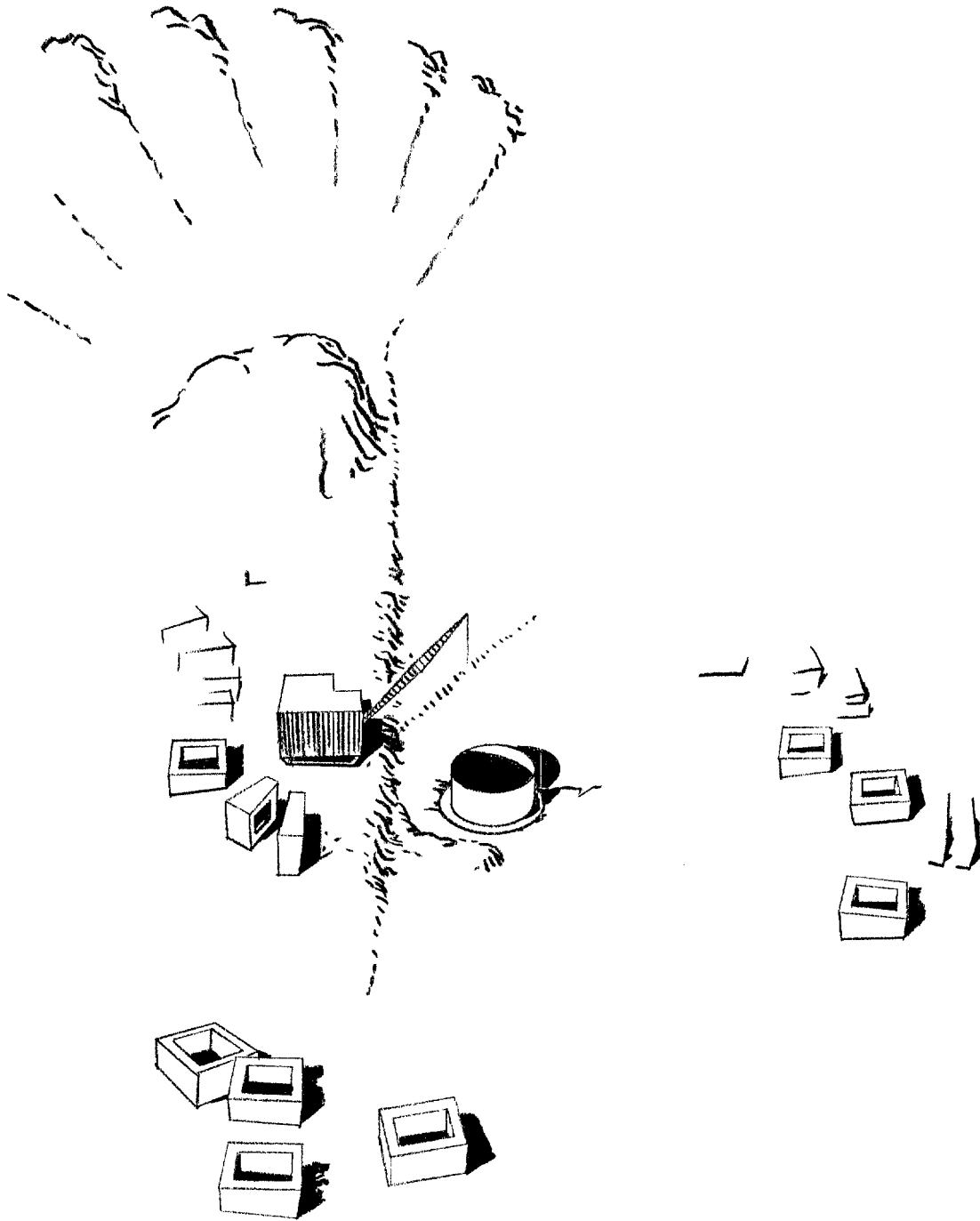
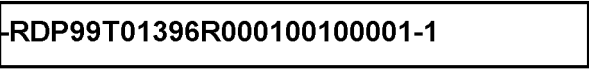
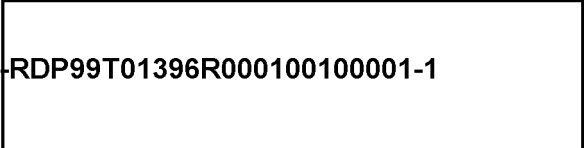


FIGURE 4. ARTIST'S CONCEPT OF EMPLACED SILO LINER AT SITE 79, OLOVYANNAYA.



TOP SECRET

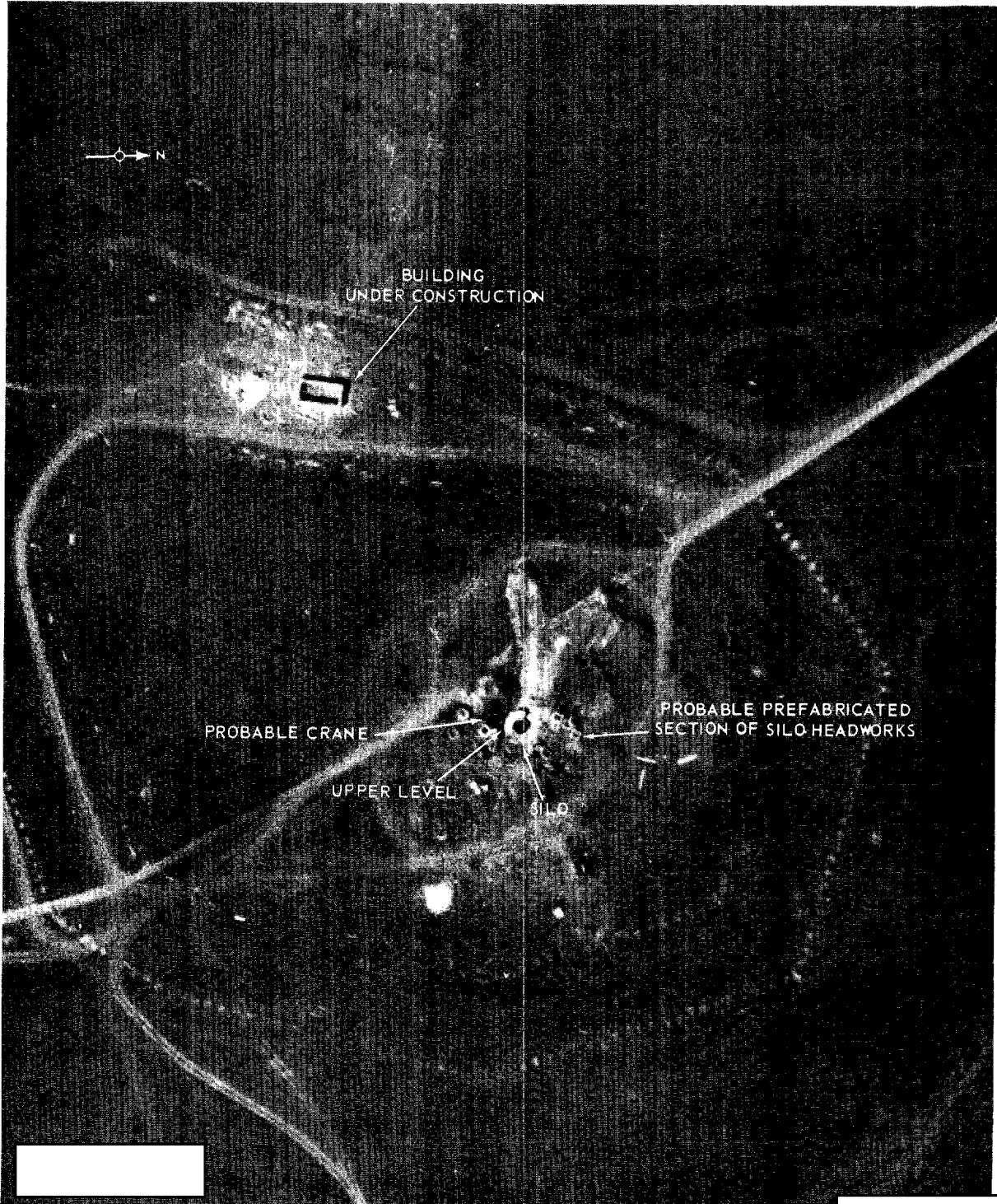




25X1

TOP SECRET

25X1



25X1D

FIGURE 5. SILO CONSTRUCTION AT LAUNCH SITE 72, OLOVYANNAYA.

25X1

TOP SECRET

25X1

Approved For Release 2003/05/15 : CIA-RDP99T01396R000100100001-1

TOP SECRET

Approved For Release 2003/05/15 : CIA-RDP99T01396R000100100001-1

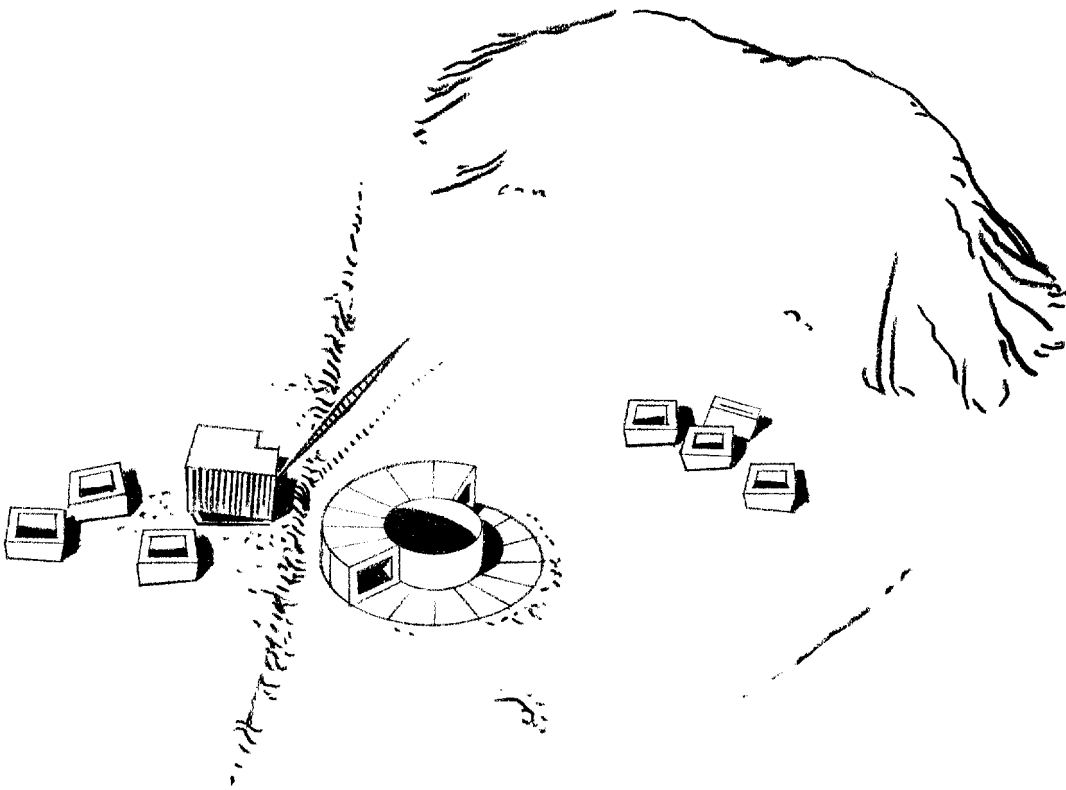


FIGURE 6. ARTIST'S CONCEPT OF SILO HEADWORKS UNDER CONSTRUCTION AT SITE 72, OLOVYANNAYA.

[Redacted]

Approved For Release 2003/05/15 : CIA-RDP99T01396R000100100001-1

25X1

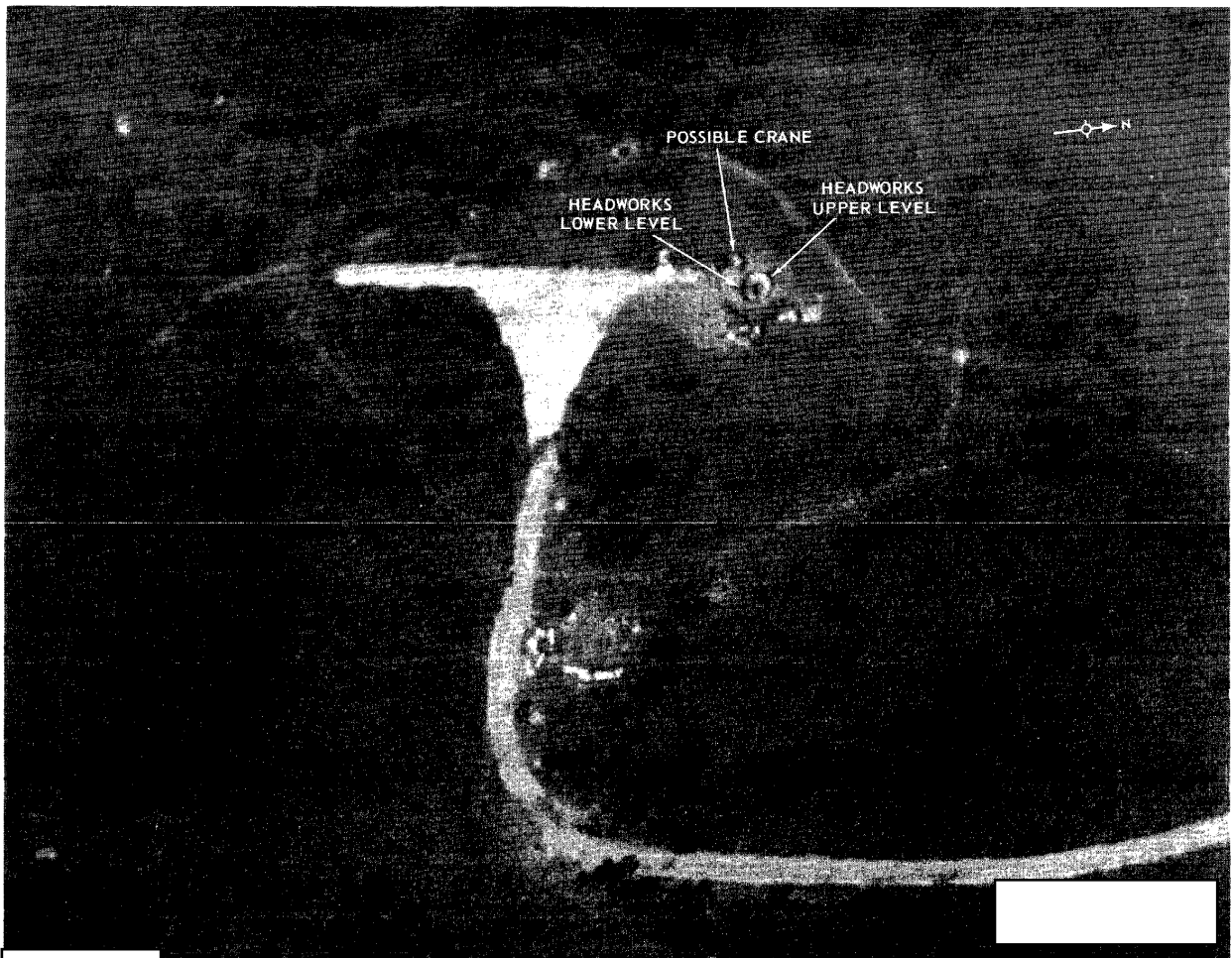


FIGURE 7. SILO CONSTRUCTION AT LAUNCH SITE 21, SVOBODNYI ICBM COMPLEX.

25X1D

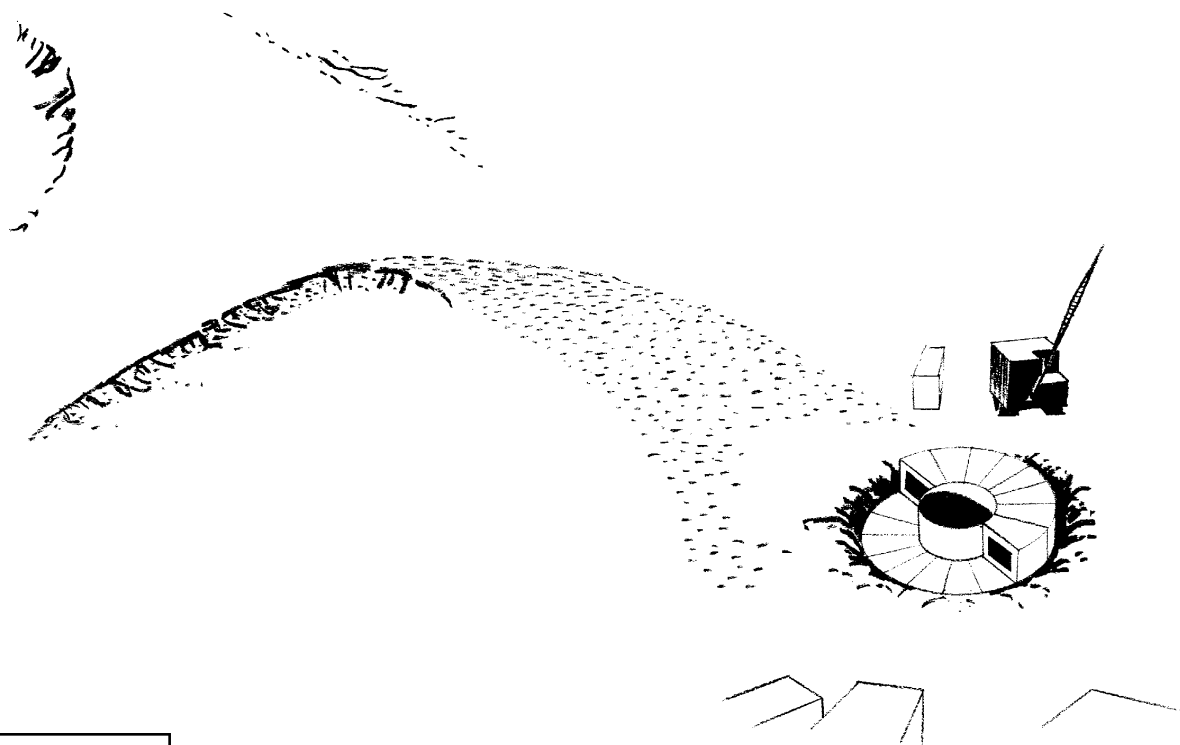
TOP SECRET

TOP SECRET

25X1

- 8 -

25X1



TOP SECRET

TOP SECRET

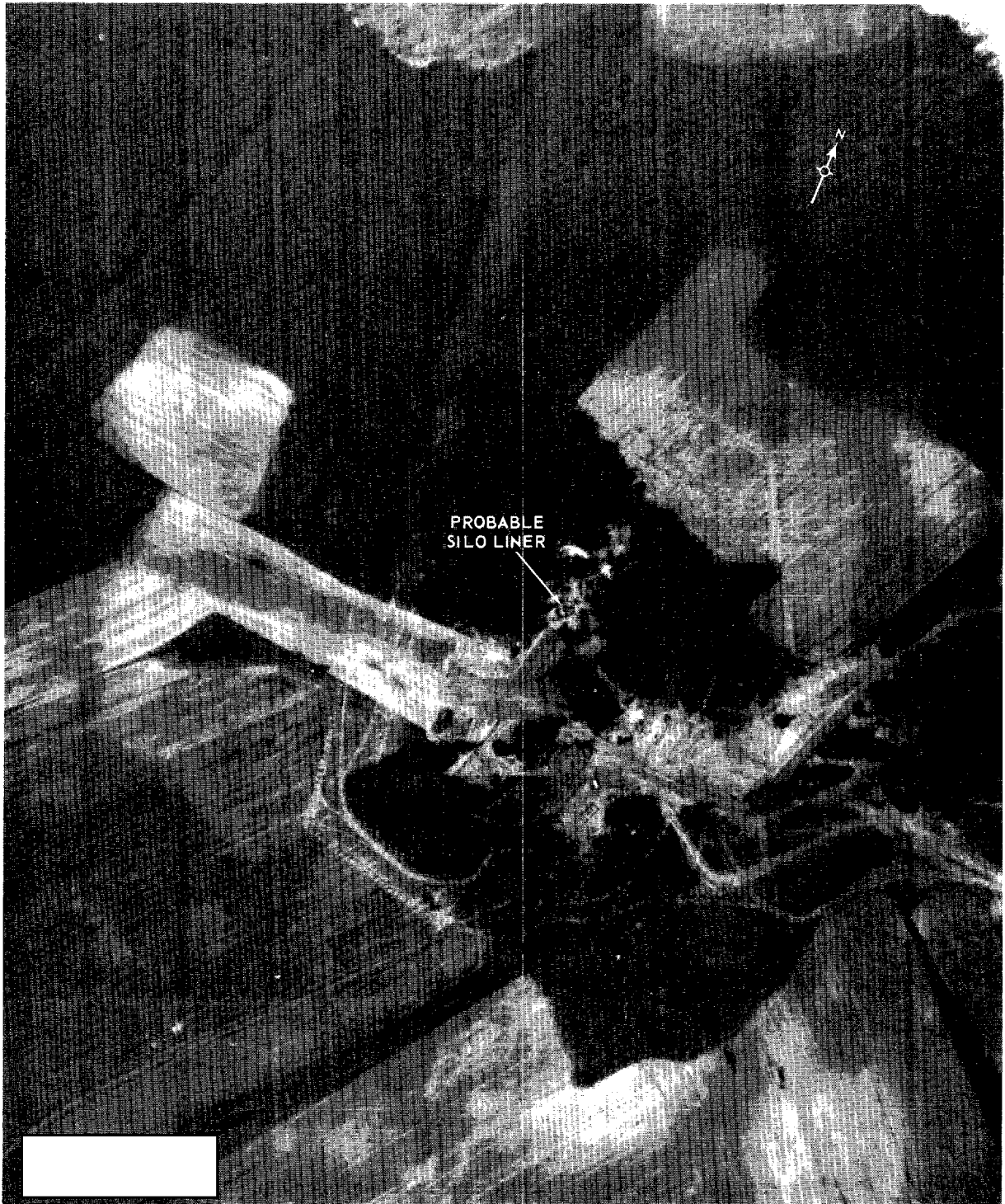


FIGURE 8. ARTIST'S CONCEPT OF SILO HEADWORKS UNDER CONSTRUCTION AT SITE 21 SVGBODNY.

25X1

~~TOP SECRET~~

25X1



25X1D

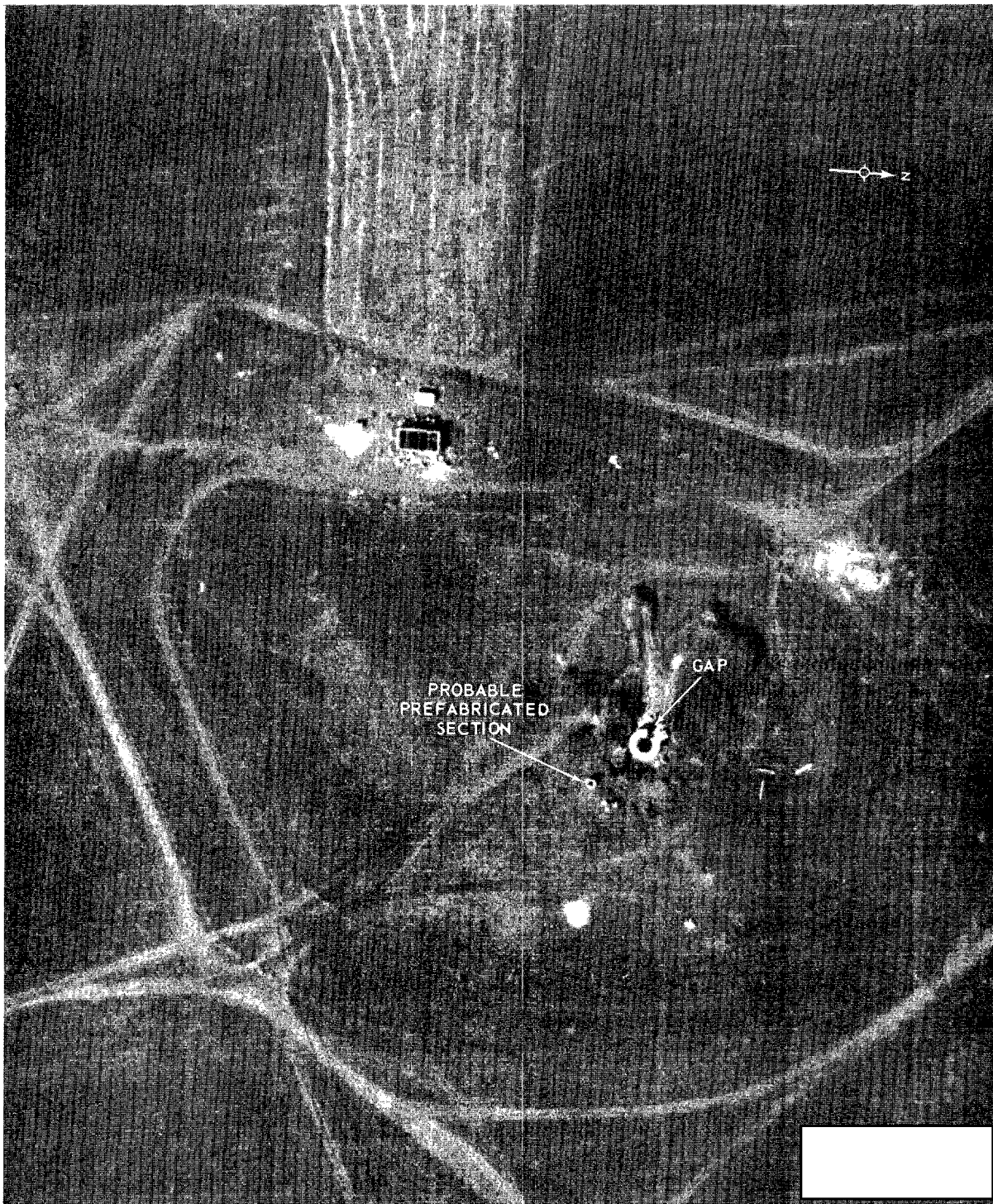
FIGURE 9. SILO CONSTRUCTION AT LAUNCH SITE 9, KOSTROMA ICBM COMPLEX.

25X1

~~TOP SECRET~~

25X1





25X1D

FIGURE 10. SILO CONSTRUCTION AT SITE 72, OLOVYANNAYA.

25X1

Approved For Release 2003/05/15 : CIA-RDP99T01396R000100100001-1

25X1B

Next 2 Page(s) In Document Exempt

Approved For Release 2003/05/15 : CIA-RDP99T01396R000100100001-1

**TOP SECRET**

**TOP SECRET**