

PHOTOGRAPHIC INTERPRETATION REPORT



[REDACTED]  
KARTALY  
ICBM COMPLEX  
USSR

RAIL-TO-ROAD  
TRANSFER POINT

[REDACTED]

DECEMBER 1966

COPY 111

6 PAGES

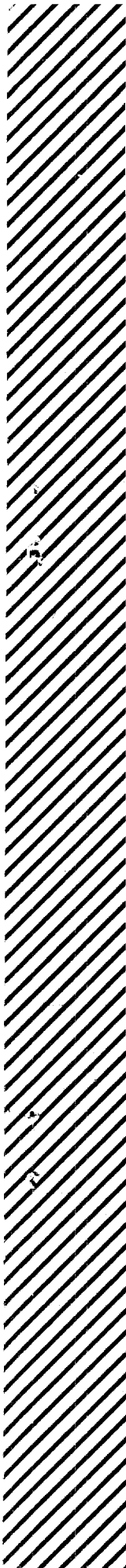
25X1

[REDACTED]

25X1

Declass Review by NIMA / DoD

GROUP 1 EXCLUDED FROM  
AUTOMATIC DOWNGRADING  
AND DECLASSIFICATION



25X1

Approved For Release 2003/05/15 : CIA-RDP99T01396R000100080001-4

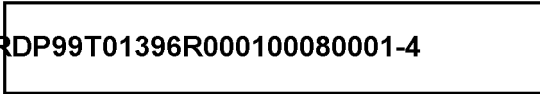
Approved For Release 2003/05/15 : CIA-RDP99T01396R000100080001-4

25X1



Approved For Release 2003/05/15 : CIA-RDP99T01396R000100080001-4



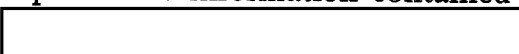
~~TOP SECRET~~



25X1

### PREFACE

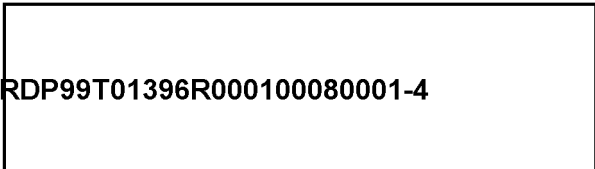
25X1

This report supplements  Kartaly ICBM Complex, USSR, prepared in response to CIA Requirement C-DI5-82,972 requesting detailed line drawings, to scale, of elements of the complex. The information contained herein is based on  photography  Individual reports will be updated periodically to reflect changes observed on subsequent photography.

25X1

25X1D

The horizontal and vertical dimensions included in the report are computed values, as derived, and do not reflect numerical roundoff. The horizontal dimensions are accurate to within plus or minus 5 feet or plus or minus 5 percent, whichever is greater. The vertical dimensions are accurate to within plus or minus 5 feet or plus or minus 5 percent, whichever is greater. These dimensions represent the best mensural data to date, and are to be considered the most accurate with respect to any conflicting data in previously published reports.



25X1

~~TOP SECRET~~

Approved For Release

~~TOP SECRET~~

2003/05/15 : CIA-RDP99T01396R000100080001-4

### KARTALY ICBM COMPLEX

#### USSR

#### RAIL-TO-ROAD TRANSFER POINT

The rail-to-road transfer point serving the Kartaly ICBM Complex (Figures 1 and 2) is located at 53-00N 060-33E, approximately 7,600 feet southwest of the complex support facility.

The transfer point is served by a rail spur extending from the complex support facility. It is expected that the main rail spur will be extended toward the southwest fenceline. The typical loop road pattern, adjacent and parallel to the main rail spur, has not been started. All of the warehouses, storage, and equipment buildings associated with this type of facility are under construction.

[Redacted]

~~TOP SECRET~~

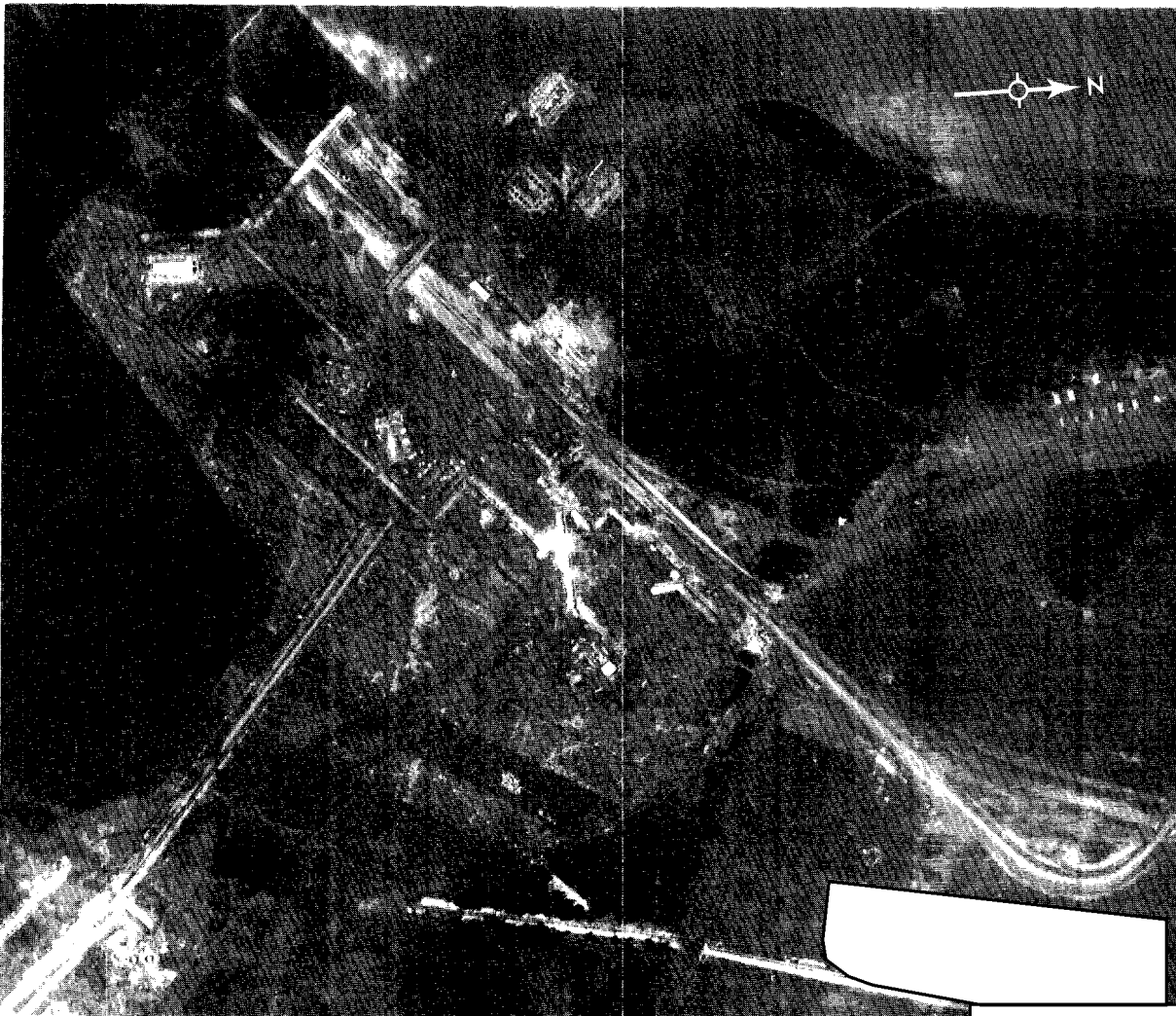
[Redacted]

25X1

25X1

Approved For Release 2003/05/15 : CIA-RDP99T01396R000100080001-4

TOP SECRET



25X1D

25X1

FIGURE 1. RAIL-TO-ROAD TRANSFER POINT, KARTALY ICBM COMPLEX.

Approved For Release 2003/05/15 : CIA-RDP99T01396R000100080001-4

TOP SECRET

25X1

25X1

25X1

TOP SECRET  
Approved For Release 2003/05/15 : CIA-RDP99T01396R000100080001-4

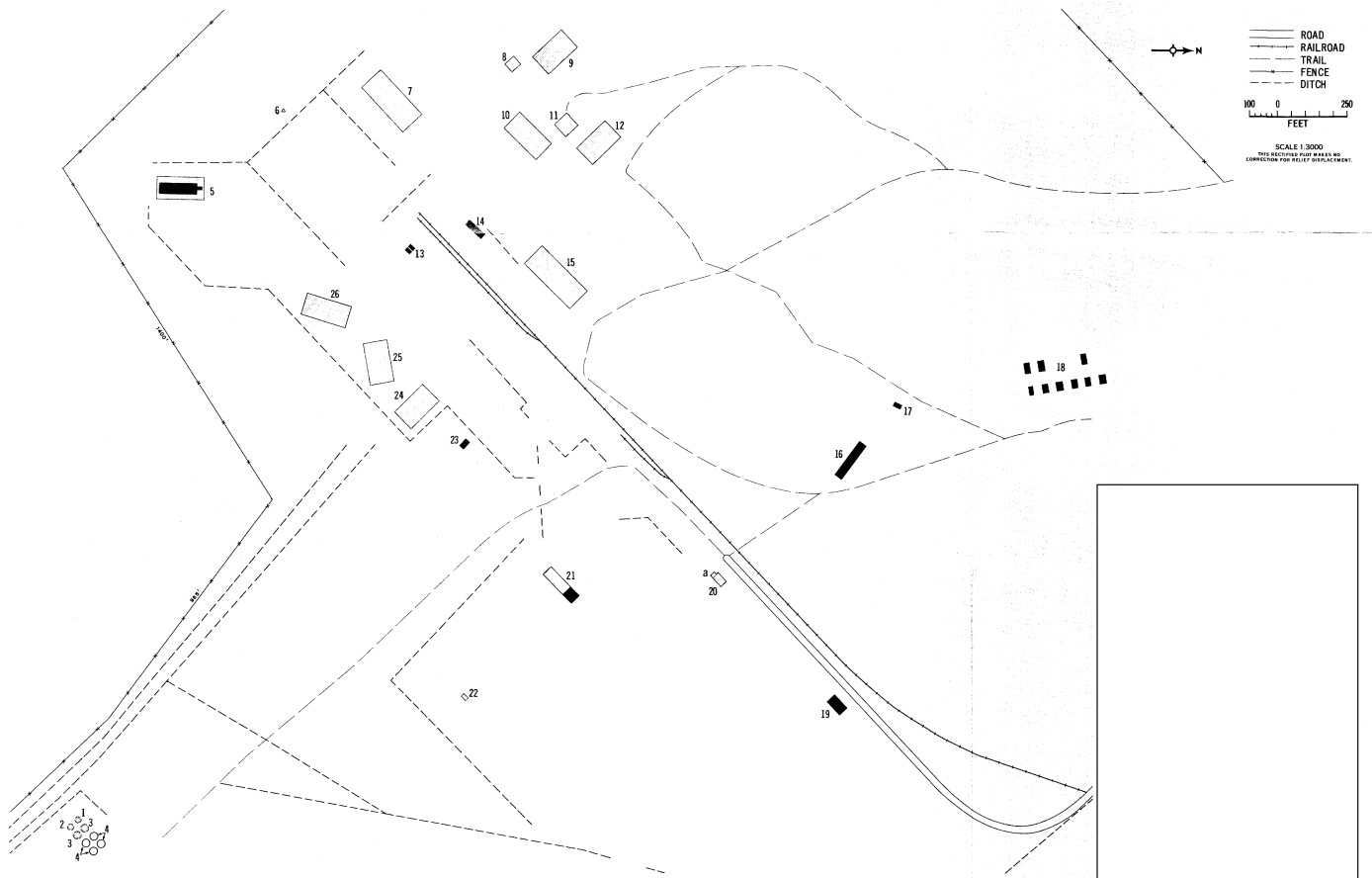


FIGURE 2. LAYOUT OF RAIL-TO-ROAD TRANSFER POINT, KARTALY ICBM COMPLEX.

TOP SECRET

Approved For Release 2003/05/15 : CIA-RDP99T01396R000100080001-4

25X1D

25X1

25X1

25X1



TOP SECRET



25X1

REFERENCES



PHOTOGRAPHY

25X1D



DOCUMENT

25X1

- 1. NPIC.  *Kartaly ICBM Complex, USSR, Sep 66* (TOP SECRET 

25X1

MAPS OR CHARTS

- ACIC. US Air Target Chart, Series 200, Sheet 0164-17A, 1st ed, Mar 60, scale 1:200,000 (SECRET)
- ACIC. US Air Target Chart, Series 200, Sheet 0164-72A, 1st ed, Mar 60, scale 1:200,000 (SECRET)

REQUIREMENT

CIA. C-DI5-82,972

NPIC PROJECT

11210/66 (partial answer)

TOP SECRET



25X1

**TOP SECRET**

**TOP SECRET**