

PHOTOGRAPHIC INTERPRETATION REPORT



[REDACTED]
IMENI GASTELLO
ICBM COMPLEX
USSR

RAIL-TO-ROAD
TRANSFER POINT

[REDACTED]

25X1

OCTOBER 1966

COPY 111

6 PAGES

[REDACTED]

25X1

Declass Review by NIMA / DoD

GROUP 1 EXCLUDED FROM
AUTOMATIC DOWNGRADING
AND DECLASSIFICATION

25X1

Approved For Release 2003/05/15 : CIA-RDP99T01396R000100010001-1

Approved For Release 2003/05/15 : CIA-RDP99T01396R000100010001-1

25X1

Approved For Release

TOP SECRET 2003/05/15 : CIA-RDP99T01396R000100010001-1

25X1

PREFACE

25X1

This report supplements [redacted] Imeni Gastello ICBM Complex, USSR, prepared in response to CIA Requirement C-DI 5-82,972 requesting detailed line drawings, to scale, of elements of the complex. The information contained herein is based on [redacted] photography [redacted]

25X1
25X1D

25X1D

[redacted] Individual reports will be updated periodically to reflect changes observed on subsequent photography.

The horizontal and vertical dimensions included in the report are computed values, as derived, and do not reflect numerical round-off. The horizontal dimensions are accurate to within plus or minus 5 feet or plus or minus 5 percent, whichever is greater. The vertical dimensions are accurate to within plus or minus 5 feet or plus or minus 5 percent, whichever is greater. These dimensions represent the best mensural data to date, and are to be considered the most accurate with respect to any conflicting data in previously published reports.

[redacted]

25X1

25X1

Approved For Release 2003/05/15 : CIA-RDP99T01396R000100010001-1

~~TOP SECRET~~

Approved For Release 2003/05/15 : CIA-RDP99T01396R000100010001-1

25X1

**IMENI GASTELLO ICBM COMPLEX
USSR
RAIL-TO-ROAD TRANSFER POINT**

The rail-to-road transfer point serving the Imeni Gastello ICBM Complex (Figures 1 and 2) is located at 51-02N 66-12E, southwest of the railhead and storage area of the complex support facility.

It is a loop-type transfer point containing 2 probable missile handling buildings (1 clerestory), 2 vehicle/equipment maintenance sheds, [redacted] 8 small miscellaneous buildings, 6 building foundations, 4 excavations, a steamline, and extensive ditching.

25X9

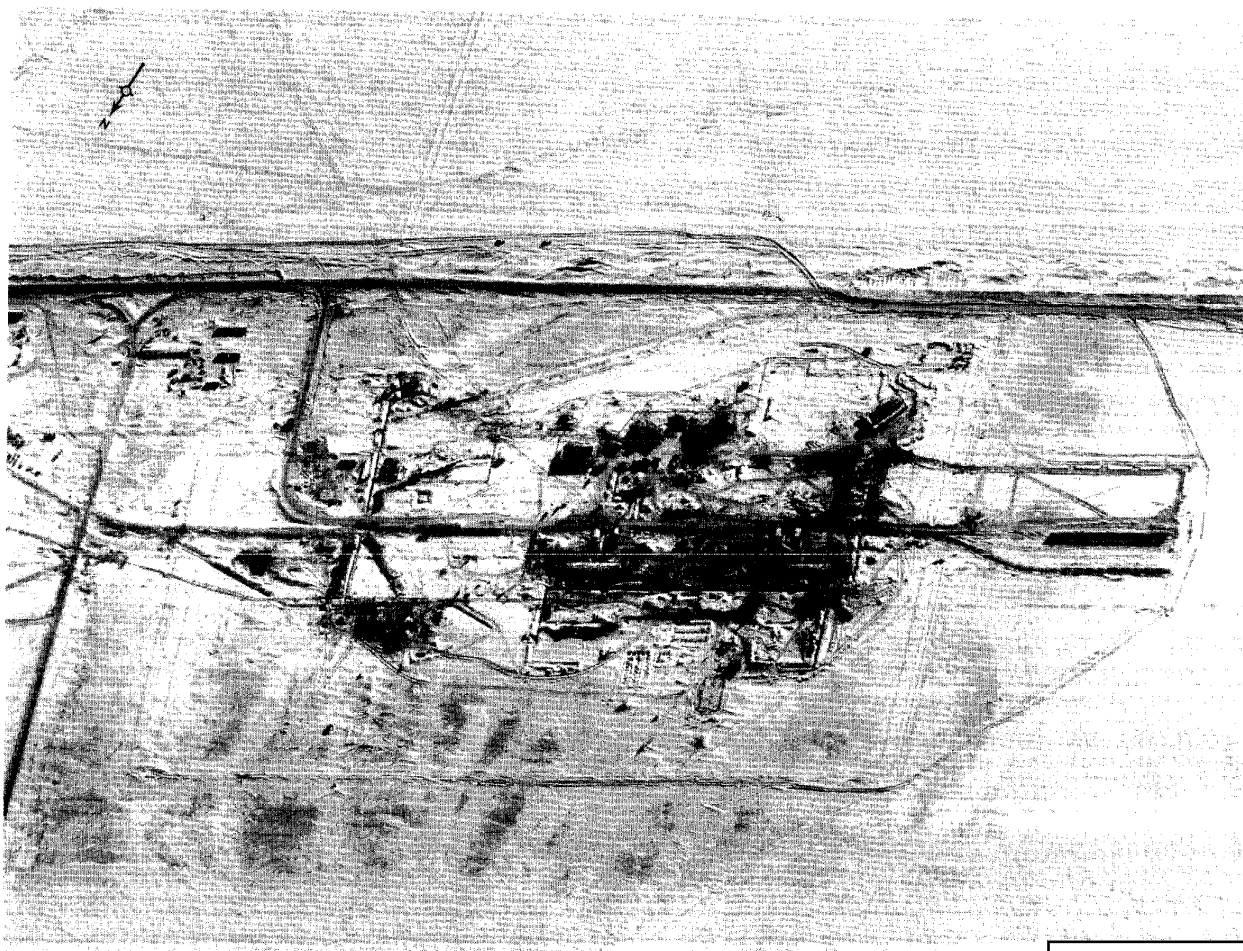
25X9

~~TOP SECRET~~

Approved For Release 2003/05/15 : CIA-RDP99T01396R000100010001-1

25X1

25X1



TOP SECRET X1



FIGURE 1. RAIL-TO-ROAD TRANSFER POINT, IMENI GASTELLO ICBM COMPLEX.

25X1D

TOP SECRET

- 2 -



25X1

TOP SECRET

25X1

Approved For Release 2003/05/15 : CIA-RDP99T01396R000100010001-1

25X9

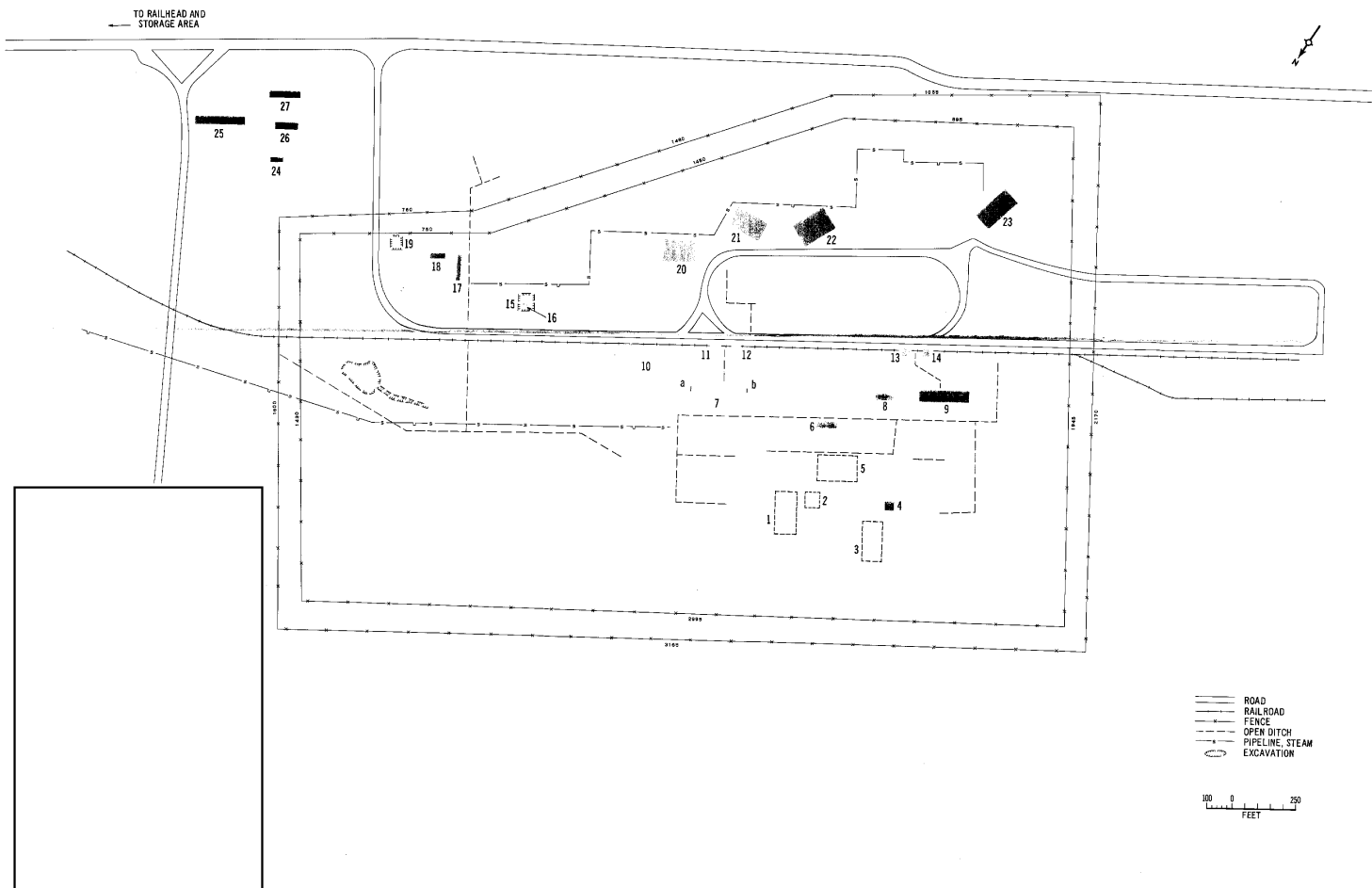


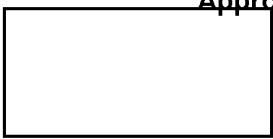
FIGURE 2. LAYOUT OF RAIL-TO-ROAD TRANSFER POINT, IMENI GASTELLO ICBM COMPLEX.

TOP SECRET

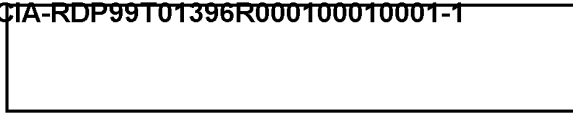
25X1
25X1

Approved For Release 2003/05/15 : CIA-RDP99T01396R000100010001-1

25X1



TOP SECRET



25X1

REFERENCES

PHOTOGRAPHY

25X1D



DOCUMENT

25X1

1. NPIC. *meni Gastello ICBM Complex, USSR, Aug 66* (TOP SECRET

25X1

MAPS OR CHARTS

25X1C

AMS. Series 1505, Sheet NM 42-1, 1st ed, Dec 65, scale 1:250,000 (SECRET

25X1C

REQUIREMENT

CIA. C-DI5-82,972

NPIC PROJECT

11210/66 (partial answer)

TOP SECRET



25X1

Approved For Release 2003/05/15 : CIA-RDP99T01396R000100010001-1

TOP SECRET

Approved For Release 2003/05/15 : CIA-RDP99T01396R000100010001-1

TOP SECRET