

SESSION INFORMATION

A. TARGET DATA:

Date: 4 MAR 93  
Task/Target Number: 93-171-P  
Session Number: 01

B. PERSONNEL DATA:

Source Number: 072  
Monitor Number: N/A  
Beacon/Sender No: N/A

C. SESSION DATA:

Session Start Time: 1130  
Session Stop Time: 1205  
Method Used: ERV  
Aids/Distractions (PIs): None  
Pre-sessions Hunches: None  
Date Summary Returned: 4 Mar 93

D. EVALUATION DATA:

Viewer Confidence (H/M/L): M  
Evaluator's Estimate:

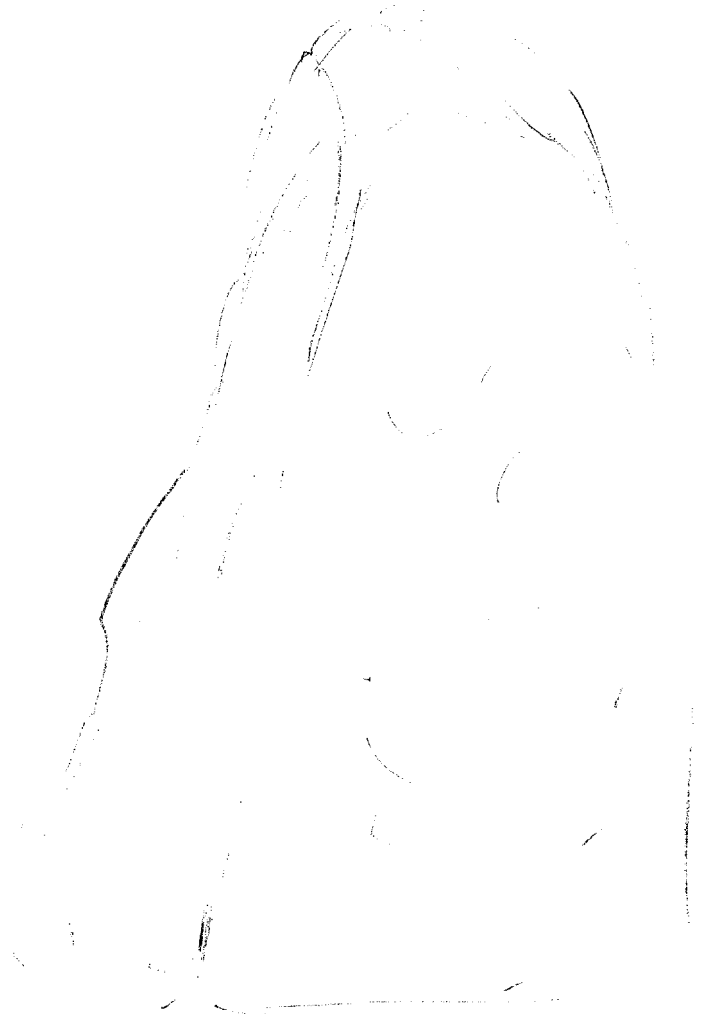
E. SESSION SUMMARY:

----When all was said and done, target appeared to be some sort of tall, grayish-white structure of historical significance. The target seemed to be intentionally isolated. Its purpose appeared associated with the fact that it was pointed towards the heaven. Connotations may be religious or flight related.

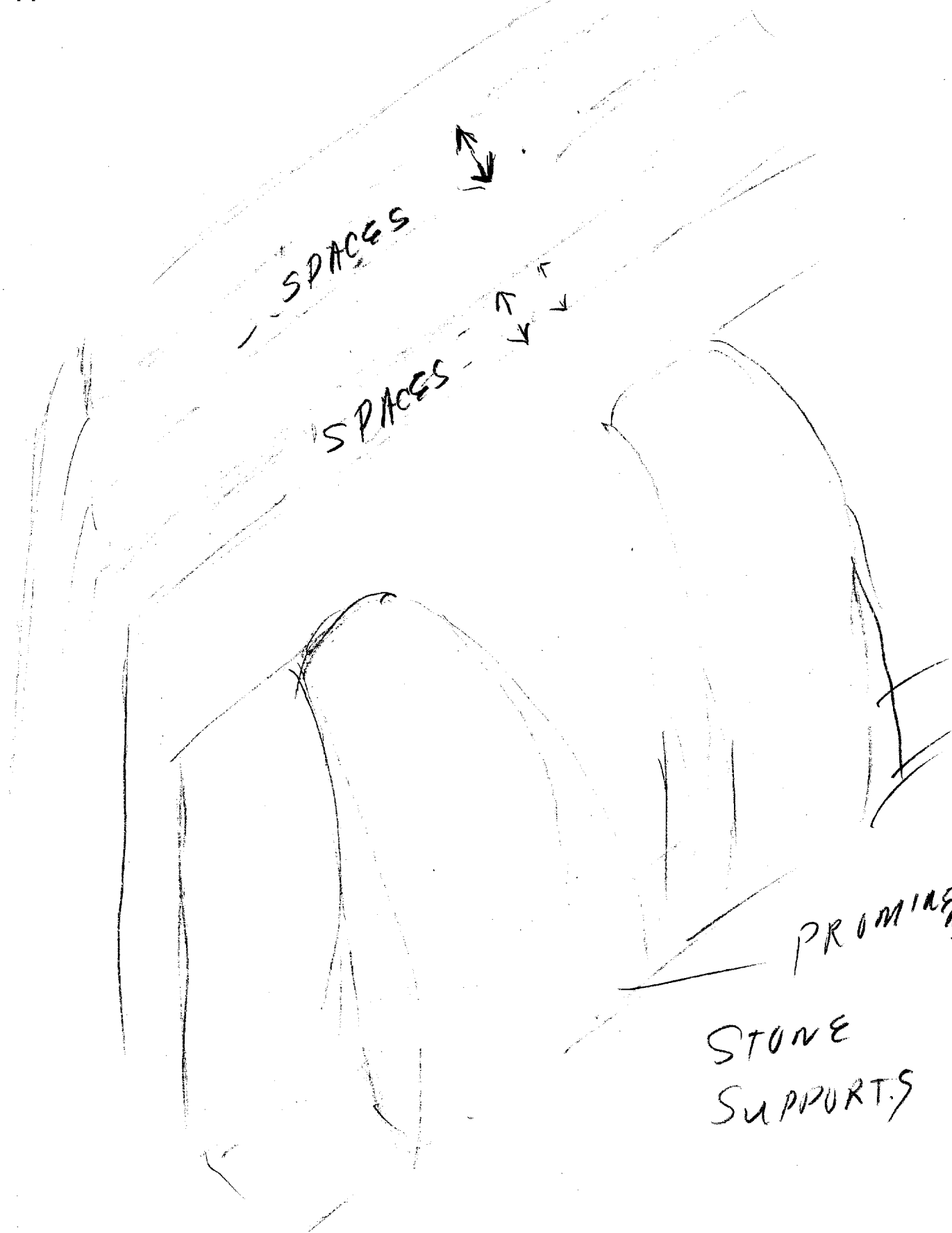
OPS COMMENTS: Procedure that led to the above response is as follows:

-----I initially accessed a huge gray blue stone which reminded me of (AOL) Stonehenge. See Enclosure 1. Once this was objectified, I perceived two huge pillars utilized as side supports to some sort of open air, hard surfaced building. The open structure appeared to be comprised of huge slabs (of cement. I objectified this AOL perception at Enclosure 2. The target then evolved as a pyramid-shaped structure viewed from a distance at dusk. The word "aurora" surfaced to describe the orange light above the top of the pyramid and below the prevailing clouds. See Enclosure 3. I switched to an overhead perspective in an effort to determine the geographical location of the site. The target structure appeared to be in a hilly area surrounded by lush vegetation and other equally esoteric structures in the distance. The scene was one of the Incas in Peru. See Enclosure 4. As a last effort to overcome an AOL drive, I allowed the pencil to free-sketch its perceptions. The results are at Enclosure 5 and Enclosure 6. The summary reflects the main characteristics<sup>2</sup> of this effort: tall structure, etal.

AOL  
Stonhenge



ENCLOSURE 7

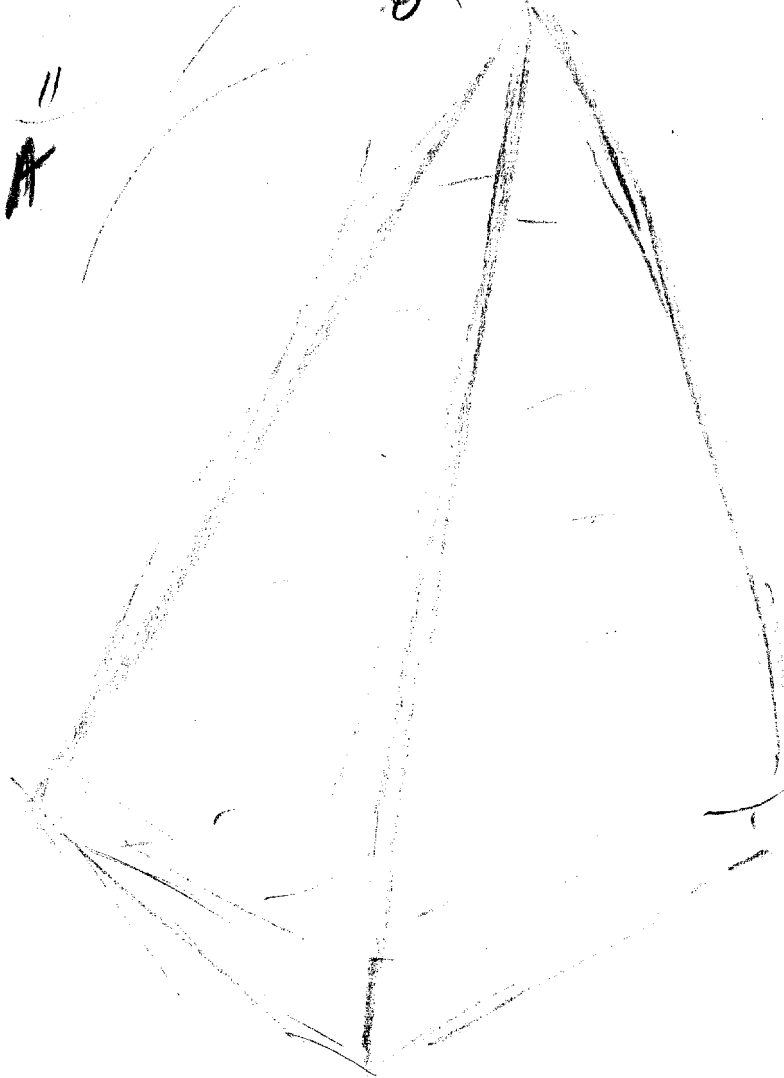


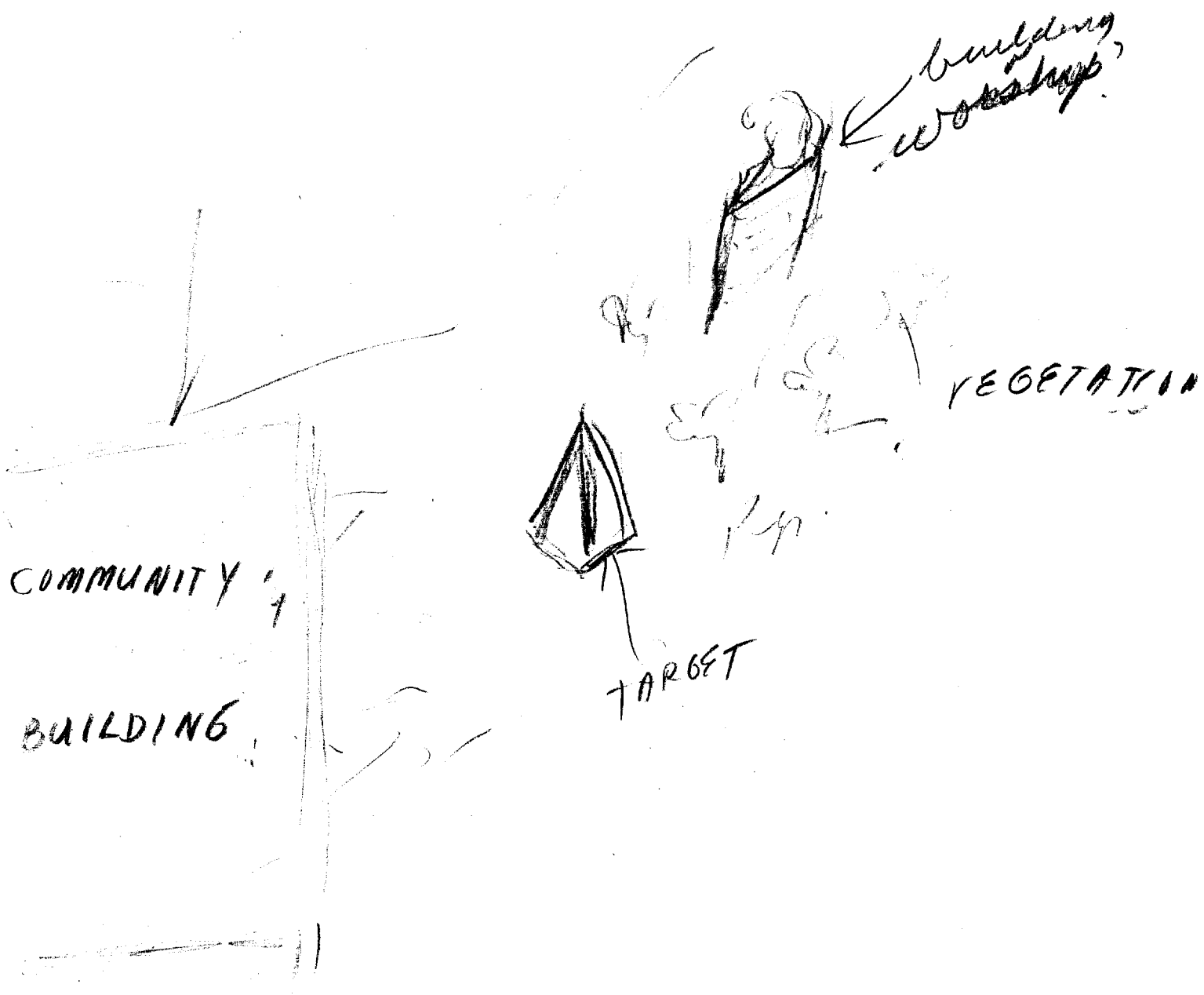
ENCLOSURE 2

*SECRET*  
DUSK.

*yellow  
orange GLOW*

*"AURORA"*



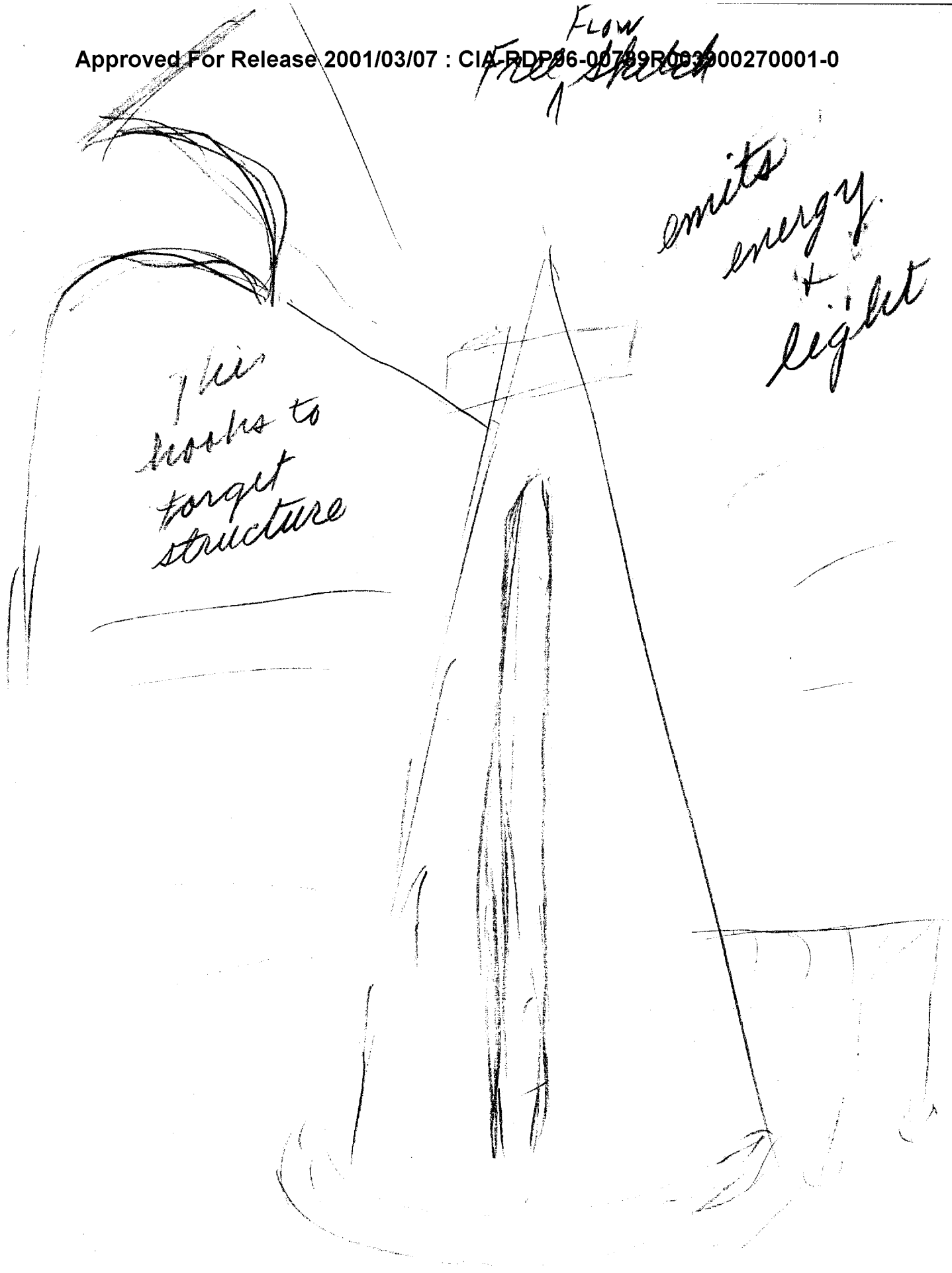


Enclosure 4

Flow  
Free sketch

emits  
energy  
+  
light

This  
looks to  
target  
structure



ENCLOSURE

(5)

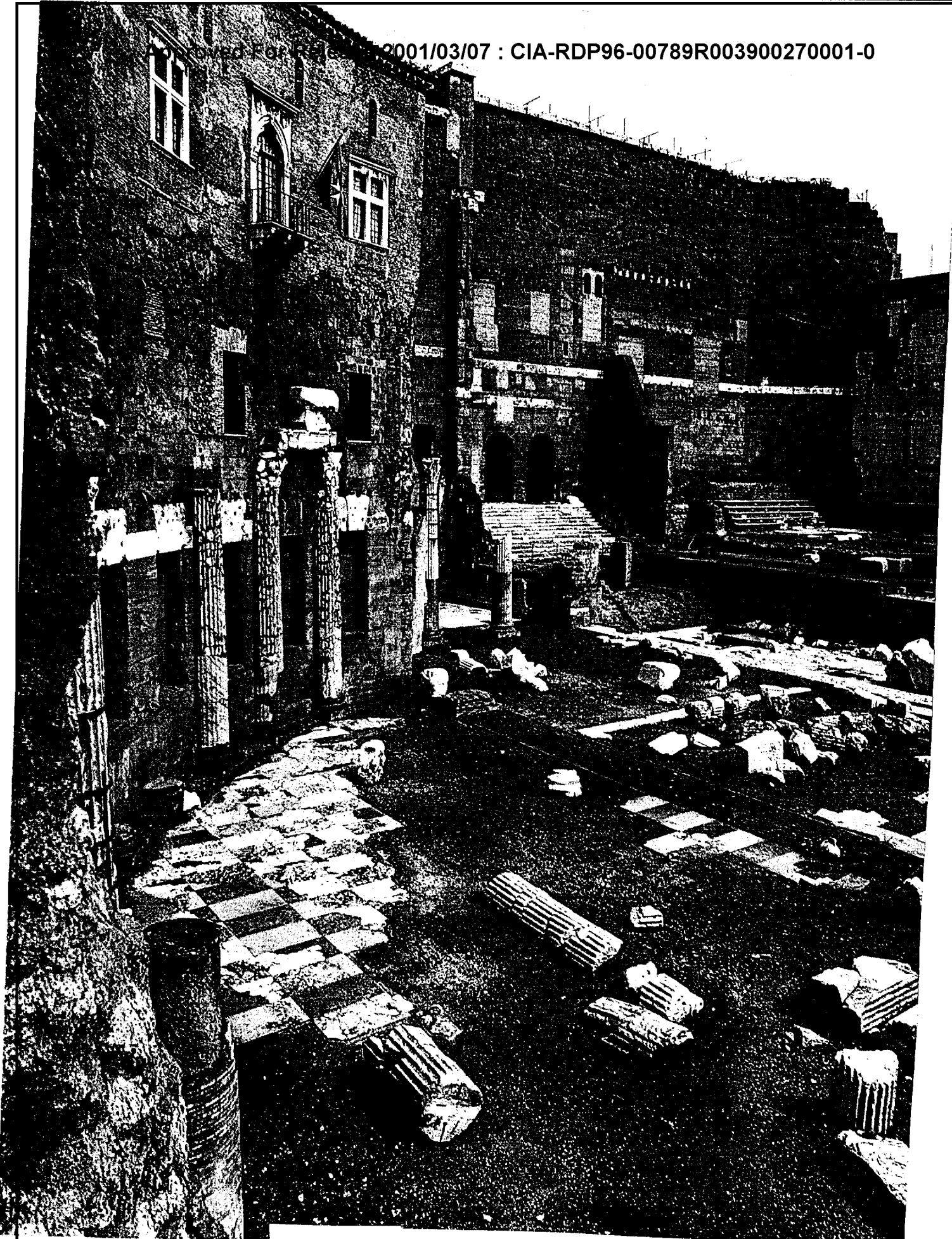
FREE FLOW  
SKETCH

*Space Capsule  
Launch*

PLATFORM

ELEVATOR

ENCLOSURE 6



Amid ruins of Trajan's Forum stands the Casa di Boudicca, the home of the British queen who defeated the Roman army in AD 60. The ruins are the work of Mattia's Italian association.



1. Conceptual General

- a. Historical / Ruins
- b. Scapes / Walls
- c. Columns
- d. Boston Society

2. Analytic Specific

- a. Forum / meeting Place
- b. Courtyard of Piers
- c. Steps / Buttress / Columns
- d. Flag (red) / Cross<sup>white</sup>
- e. Italian Knights / Wall

TASKING SHEET

SOURCE NO: 072

DATE: 4 March '93

SUSPENSE: 5 March '93

1200 hrs.

1. PROJECT NUMBER: 93-171-P

2. METHOD/TECHNIQUE: Method of choice.

3. BACKGROUND: This project is a continuation of a proficiency series targeting "structures/configurations,"

----These configurations can be anything. However, buildings/structures will be dominant.

----Targets will emphasize key elements that are unique or distinct. They will be composed of specific shapes, contours, and configurations. Some targets may have multiple similar shapes/features

----Targets may be of a commercial, governmental, or military. They may be either historic or contemporary.

4. ESSENTIAL ELEMENTS OF INFORMATION: \_\_\_\_\_

----Describe/sketch the key features/shapes/contours of the target.

----Describe/sketch the spatial relationships or relative sizes of the target features.

----Determine other features such as colors and predominant backgrounds.

----Determine the purpose of the target structures.

COMMENTS: \_\_\_\_\_

----This target has/does not have a beacon person. ~~Beacon person is~~

----Optional Coordinates: 45 16 32/18 19 08