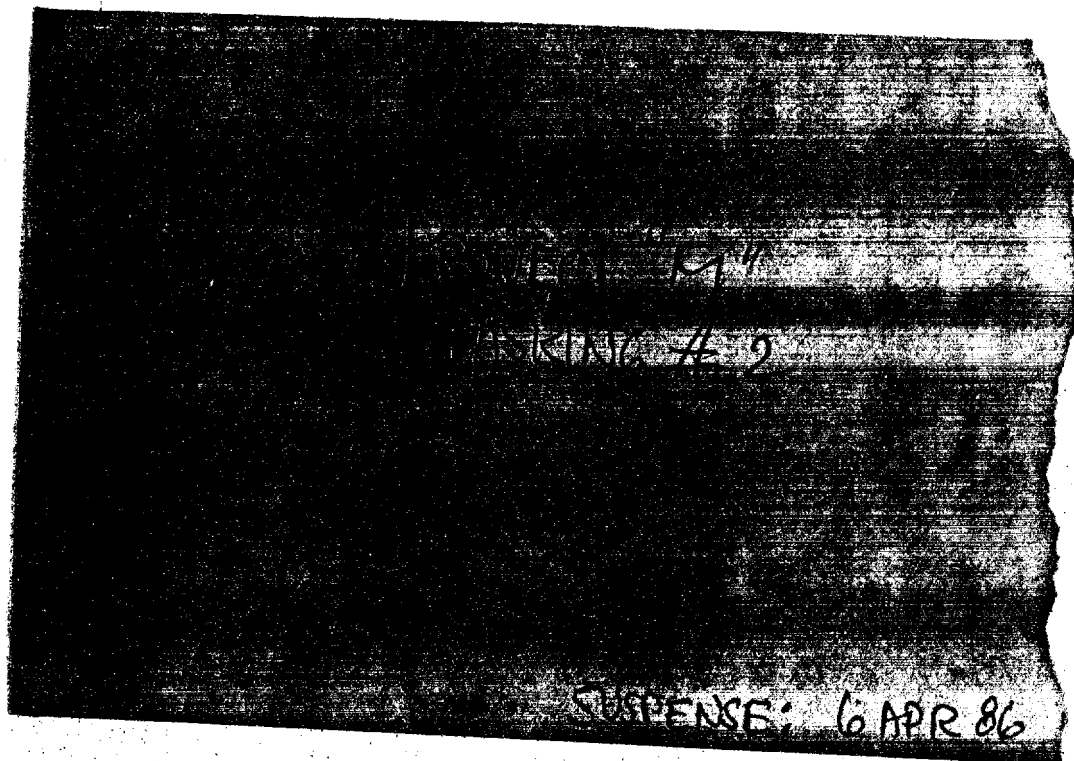


TASKING # 2

DESCRIBE THE VEHICLE(S)  
OF SPECIAL INTELLIGENCE  
INTEREST AT

182478 / 836131



6 APR 87

FLAT SLIGHTLY ROBBING  
LANDSCAPE, LOOKS SOMEWHAT  
BARREN. BUILDING IS NOT  
NEAR AS LARGE AS I  
THOUGHT LAST TIME. THERE  
IS ANOTHER STRUCTURE  
A WAYS AWAY. IN THE  
BACKGROUND IS A STEEP  
ROCK FORMATION (SEE SKETCH)  
THERE IS AN OPENING  
IN ROCK (SEE SKETCH). AT  
THIS POINT I TOOK A  
SIDE TRIP, DO NOT KNOW  
WHERE I WENT. GOT BACK  
IN CONTROL AND ENTERED  
OPENING. NO PEOPLE OR  
SECURITY AT THIS POINT.  
MOVED ACROSS FLAT FLOOR  
AREA IS DARK BUT NOT

PITCH BLACK, MOVED ACROSS  
FLOOR TO WOODEN STEPS.

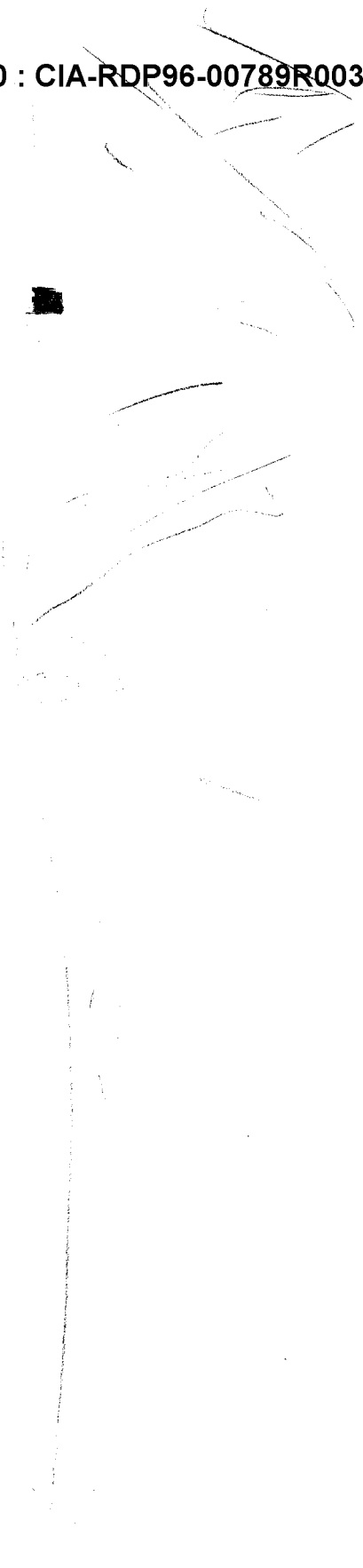
STEPS LEAD DOWN ONE LEVEL  
(4 OR 5 METERS) TO A LIGHTED  
AREA. TABLE AT THE SIDE  
OF AREA. GRAY WORK TABLE.

MOVE DOWN TO TAKE A  
LOOK AT ACTIVITY. ENVELOPE

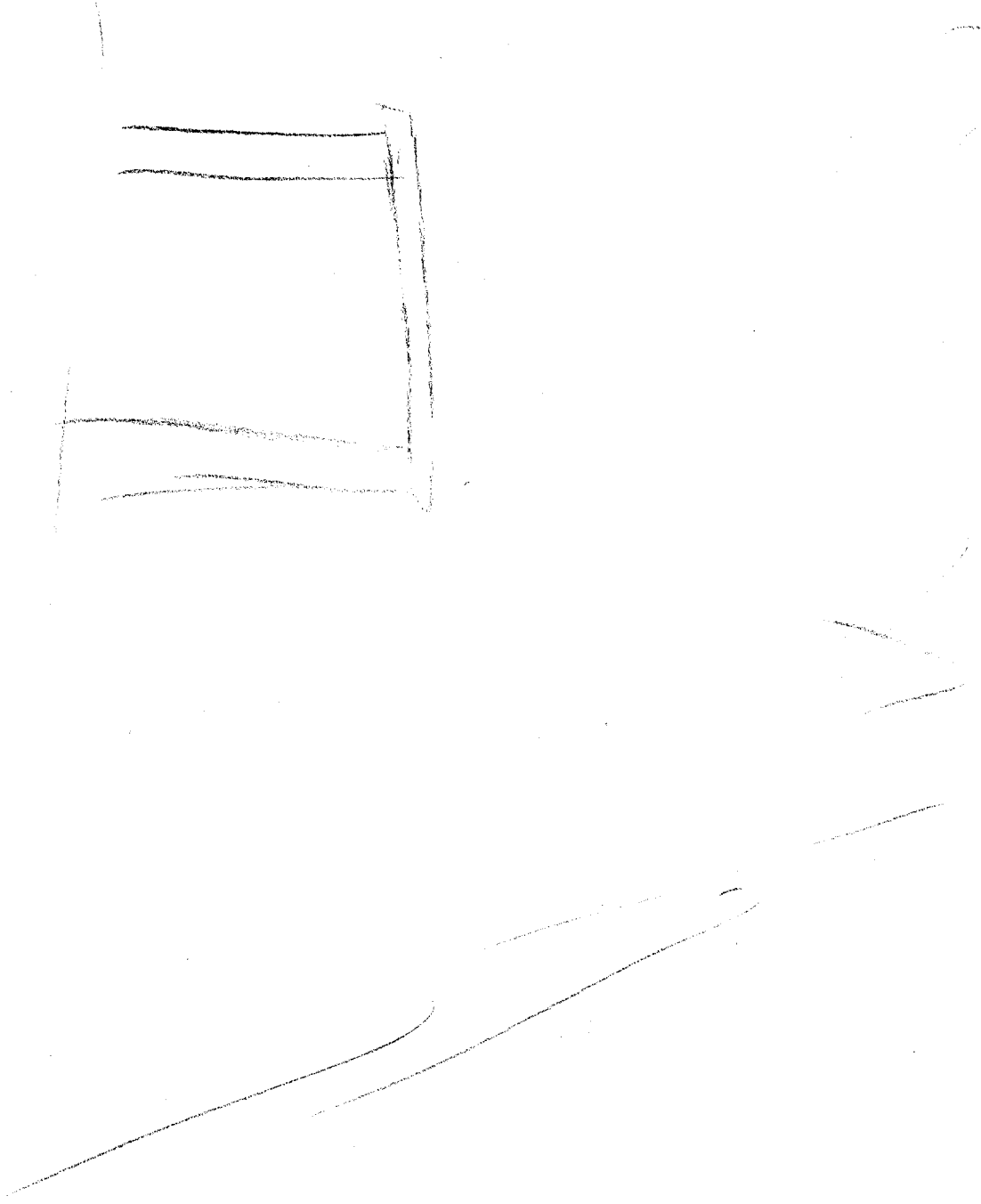
JUMPS IN MY HAND. FEEL  
A TUG. I INSTANTLY  
RETURN TO ROOM AND  
TURN LIGHTS ON. MAKE  
A QUICK CHECK AND THEN  
MAKE A COMMAND DECISION  
TO RETURN TO OTHER BUILDING  
WHERE THERE ARE PEOPLE.

NOTE: LAST FRIDAY AM  
I THOUGHT I HEARD A VOICE  
BUT IGNORED IT TO GET TO

Can't get a handle on...



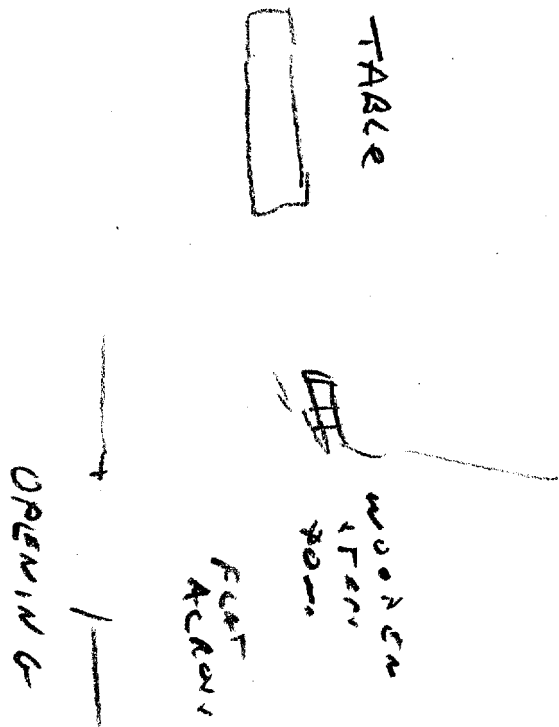
LANDSCAPE  
WITH ROCK  
FORMATION



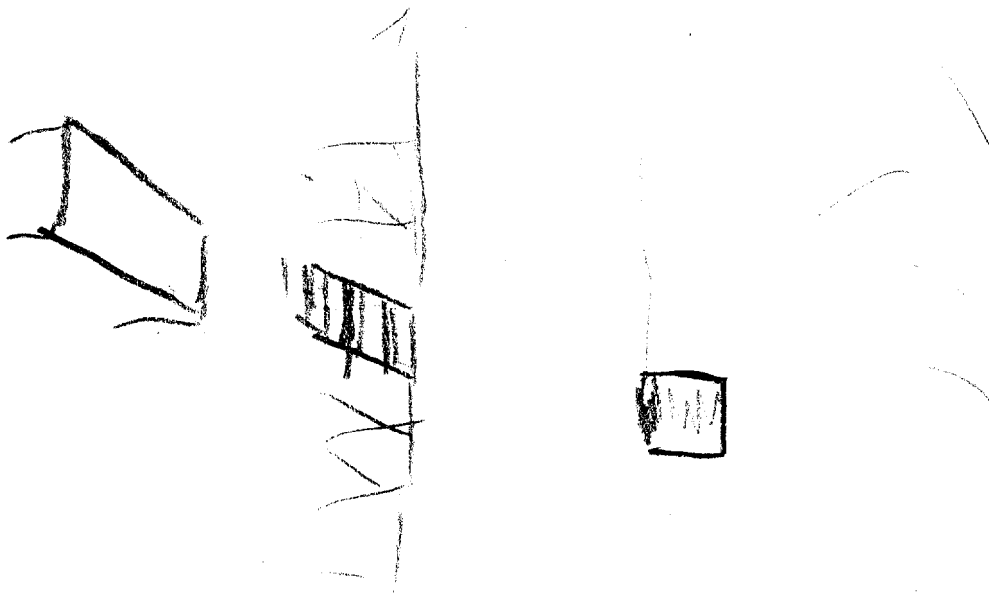
ROCK  
FORMATION

W. TIT

DOOR / OPENING



INSIDE  
ROCK



INSIDE  
LOOKING  
BACK  
AT  
OPENING