

LYN
16 DEC 87
1012 HUS
FC. MONTAS
ED.

P.I. NANO
A.V. NANO

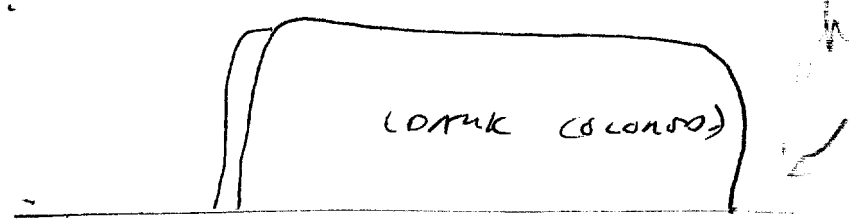
S4: DESCRIBE ANY TANGIBLES MENTIONED IN DOCUMENT.

S2 D M O T I ACB abs.
TITLE

HILL
LO
BLACK
DARK
FLAT
VERTICAL

S4 1/2: VERY VAGUE VISION OF LARGE, FLAT OBJECT
UP AGAINST WALL!

SK! WALL



②

S4! DESCRIBED OBJECTS

S2 D R2 S7 T 1 R2 A/S
CROSSING

ROUND
LONG
HORIZONTAL
HORIZONTAL

ALL DARK
PIPS

S2 D R2 S7 T 1 R2 A/S

ALL DARK
CUBAN

S2 D R2 S7 T 1 R2 A/S

WAGON

FLAT
ACROSS

BLDG.

3

S4: OBSERVED ~~THE~~ BLDG

S2 D M S T , AM abs.

CONSON FLAT

HARD PACKED

DARK

S4 1/2 FURTHER THAT THIS STRUCTURE IS
" IN THE SHADOW " OF A LARGER ONE.

S2 D M S T , AM abs.

INSIDE
VERY NOISY
LOUD

S4 1/2 ACTIVITY ALL AROUND - EVEN OVERHEAD.

ALL DARK
LIKE A CAR
MFG. PLANT.

4

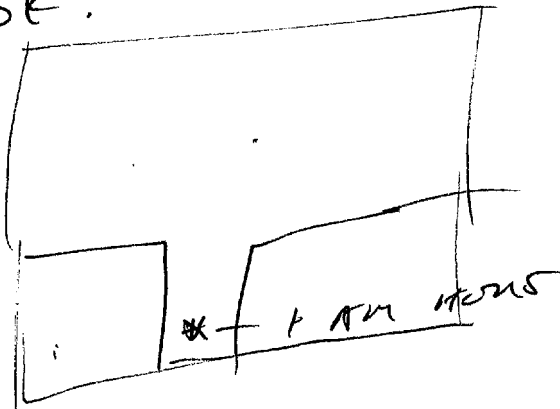
SL D M S T 1 R/R A/S.

SMALL
CROWD

LIGHT
CREAM-COLORED

OPENS UP BY BACK.

SK!



u/c small

A/S
ASSEMBLY

S 4 1/2 VAGUE VISIONS OF RACKS MOVING
OVERHEAD.

BROCK 10 28

RESUME 1040

S4: DESCRIBES THE ASSEMBLY PRODUCT.

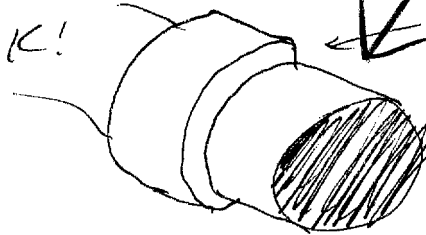
S2 D M2 87 T 1 AM etc.
(PRODUCT)

SILICON
SHTING

ROUND
LONG
BLUNT-END

S4 1/2 VISUALS:

SIC!



Quality

UNSWAY ALONG LENGTH

S4: DESCRIBES PRODUCT'S APPLICATION(S)

S2 D M 87 (APPLICATION) AM etc.

DRY
HAND

POWER
SUPPORT
IMPROVE

HUNT
HARRY

DISSEMINATION

SLOPING UP

HAND
HEAVY

(6)

sz d m sz t 1 m ob.
"pop" sound
HAND HEAD SIZE

S 4 1/2 VARIOUS PERCEPTION OF MAN w/ ^{THE} OBJECT
IN HAND, STANDING DOSSIDO LARGO OBJECT.

ALL BHK
HAND CONTROLLED.
REMOTE CONTROLLED.

sz d m sz (LARGO OBJECT) 1 m ob.

ROUND
LARGO
BEWNT SMD

LT. COLORED
NOUHT
SMOOTH
DEEP METALLIC SOUND
HOLLOW SOUND

(BEWNT SMD)

SLIGHTLY ROUND
DOWN OUT

ALL BHK
LIKE THE END OF
A LARGO TANK.

SK! DESCRIBED OTHER SMD

SL. O M O T (OTHER SMD) IN ALL

JUN 1974

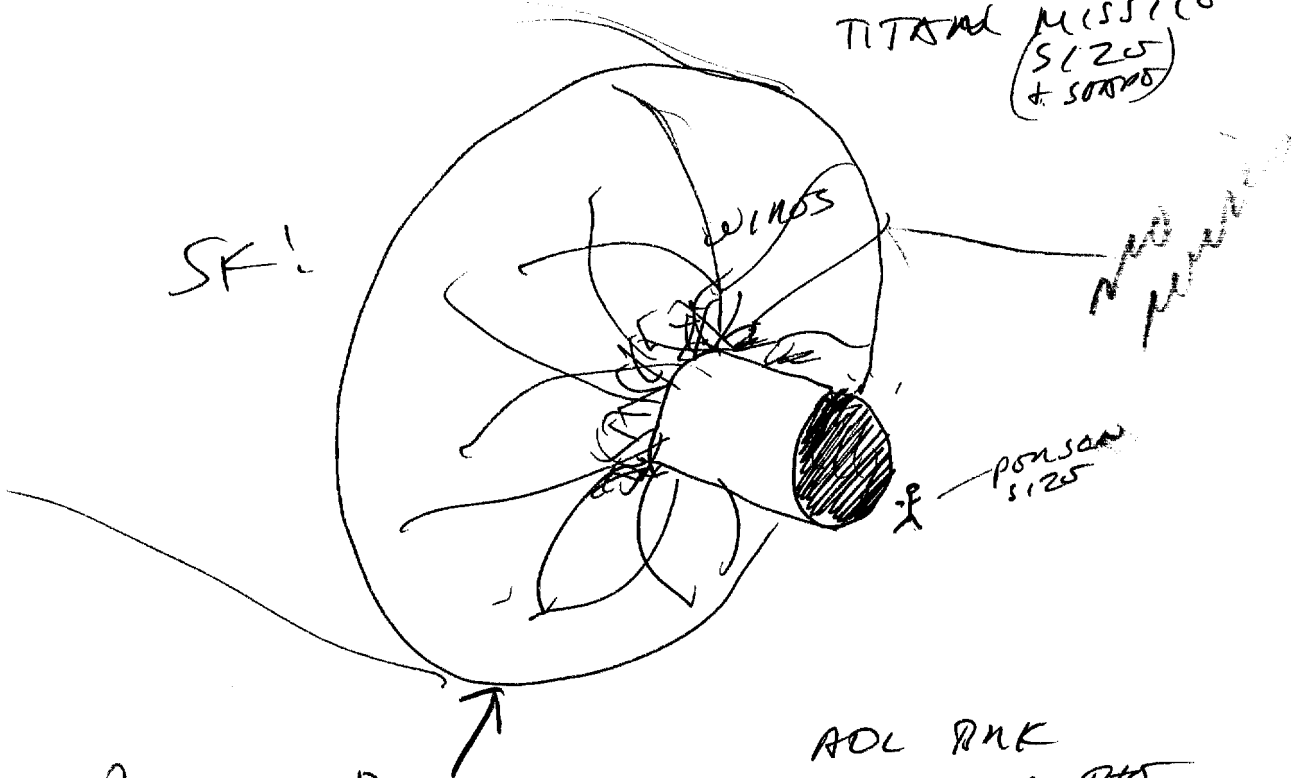
LINGS

A/S WINGS

ALL DIMENSIONS LANGON

AOL RUK #465

AOL RUK TITAN MISSILE (SIZE + SMD)



ROUNDED BLUNT OBJECT

AOL RUK AND THROUGH THE HAND HOLD CONTROLLED THE SMALLER ROUND TITAN, WHICH CONTROLLED THE LANGON ROUND TITAN.

TAB R

018 6789 (1-2) 16 Dec 87

①

S2: DESCRIBES THE LONGER THINK
THROUGH TIME.

S2 O M O T (LONGER
THINK) IN SLS,

AT DUK
IMPRESSION
THIS THINK
IS LIKE AT DUK!

AT DUK
BI BOMBOR

S2 O M O T (OPERATION) IN SLS.

NOISY
COLD
LOUD

S2S DESCRIBES ANYTHING LOUDED IT.

S4 1/2 IMPRESSION OF RADIATING ENERGY.

S4 1/2 IMPRESSION (MAYBE AT) OF RADIATING
ENERGY, AS A RESULT OF SATE SCOOTING
THROUGH LENGTH OF THINK.

BUSK 1101 HNS.

RESUME

9

DESIGNING INTO KNOWLEDGE OF THE ENERGY.

S2: SK: 

PROSSURE FEEL
NOT CONSTANT
SOFT
WARM

SURROUNDING
DIRECTIONAL

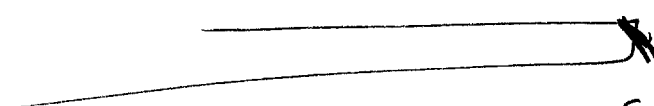
S4 1/2

STRANGE PHYSICAL / NON PHYSICAL FEEL TO IT.

ALL BNC
AS THOUGH THERE IS
A PHYSICAL EFFECT,
BUT YOU DON'T SPECIFICALLY
FEEL IT.

S4 1/2 THIS IS A BZ - PRODUCT,

S6:


S WARD

THE BNC
LASER

(10)

SZ! SMOOT
SOFID
FINK
HANK

TWAS

HELLOW
LONG
CUND
DARK
EOLIC SOUNDS.

SND

SMOOTH
BOWD
ROUND
HANK
SHINY
DARK

HOL RUK
DARK LOWS & LOSS.

SESSID SND
1116 HUS

REN RUK: PARRON MARY CONCONN ITSELF W/