

Paw

21 Jan 88
A. Mesele, md
ED
1347

174
301
868 853



A. across
flat

hard

B. low

A. up and
across
down
soft

vs. straight

A. up across
down
wood

soft

vs. level

A. many and
soft
soft

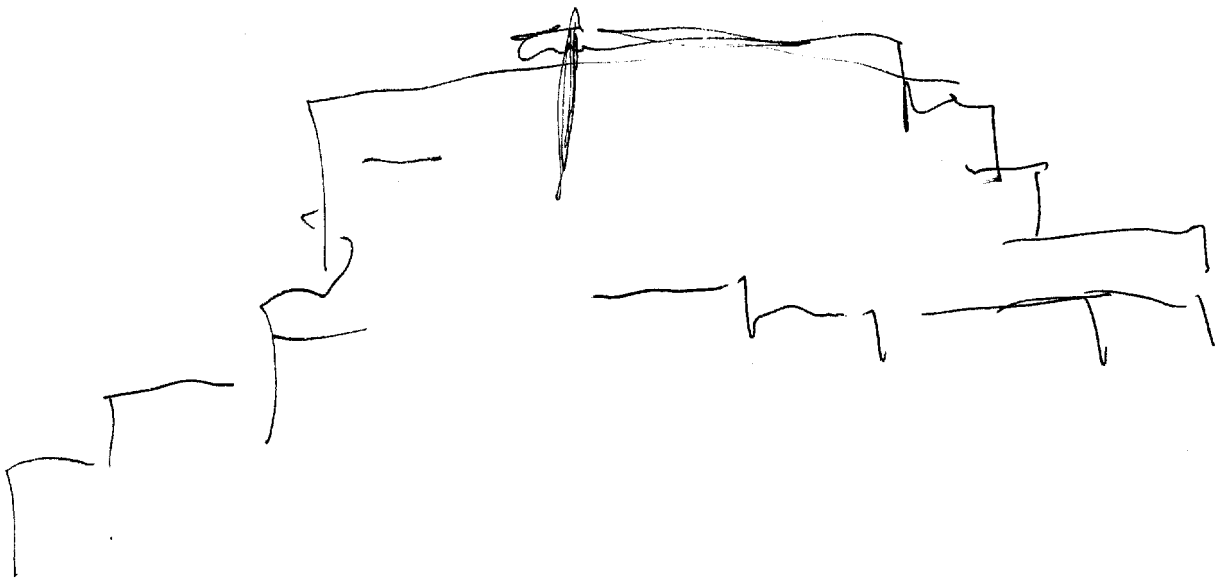
B. people

S2
bed
grass
blue
fresh smell
loud
clean
bumpy

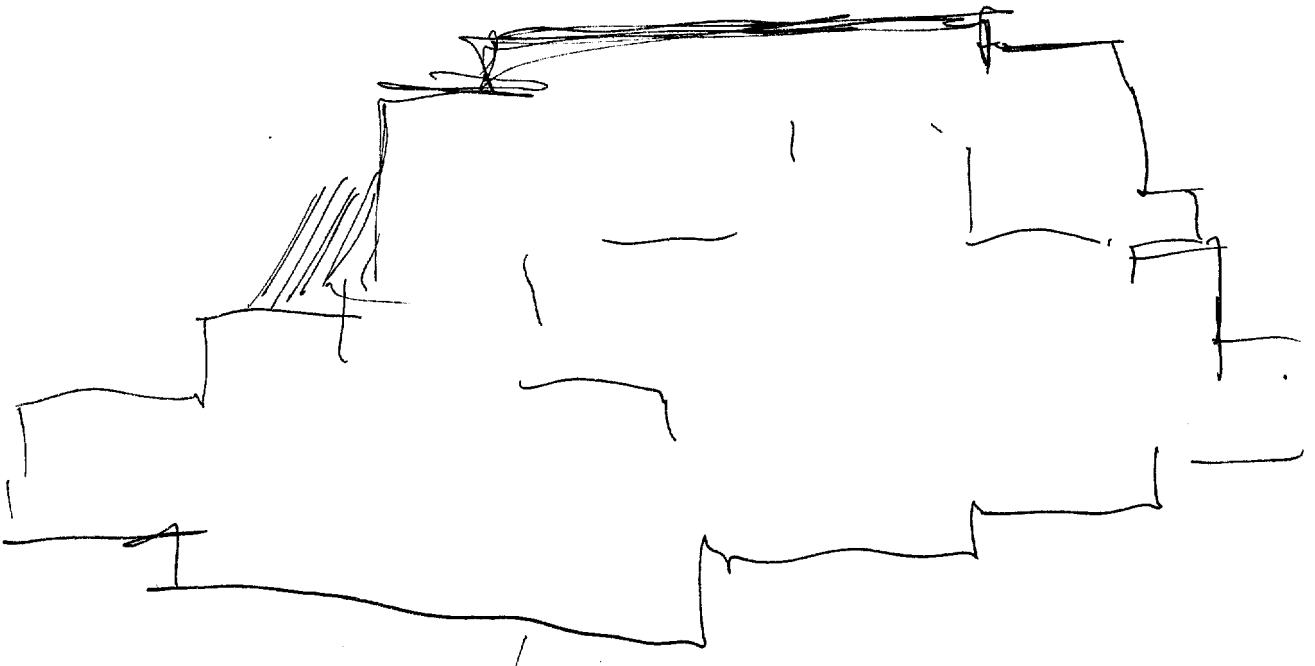
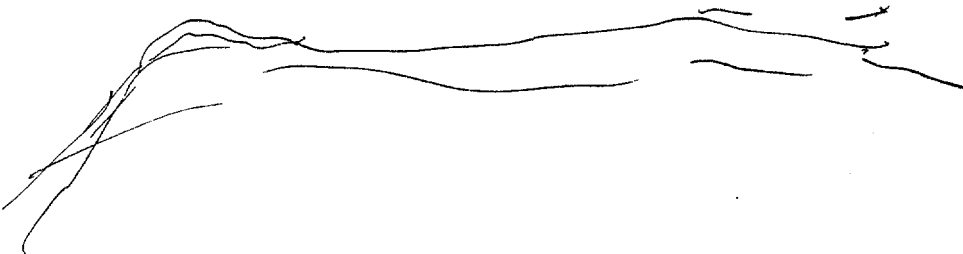
1347

pridely
hard
sunny
pleasant smell
round
open
with
cup + down

AI Bre
I like this
place



w



SZ

two
swords

angles
indies
rectangles
solid
blank
two
with

dash
flat

flat

12 BK
heavy

Structure

composite

no-nonsense
businesslike

T

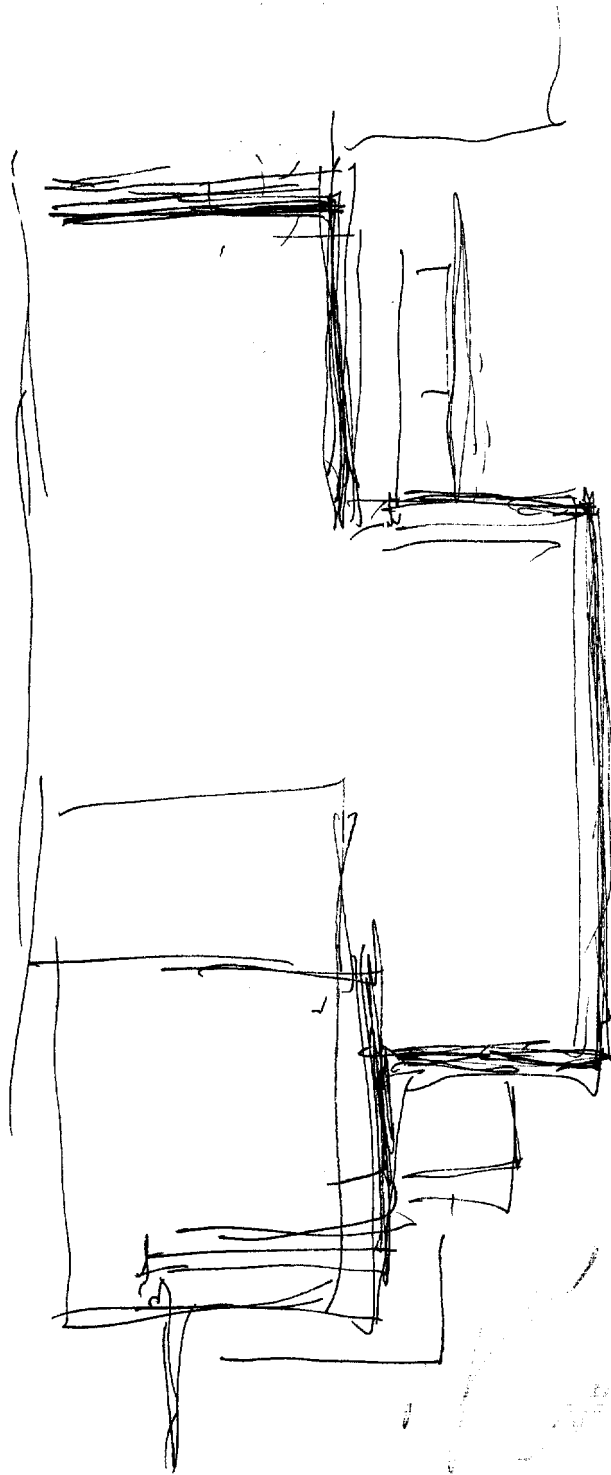
metal
connect

rounds
squares

for use
nuclear power plant

44

STRUCTURE



Large, grey, shiny structure
 with differing roof levels
 and modular components in an
 open station. All DAE

SUI

APL #15

3/2

yellow

shiny
smooth

round
edges

level

heights

roots

5 1/2' Out at
attached.
setting.

main part, diffusing - almost wooden - portions
presents dim light, murky atmosphere, crevices

Stade
stair

5 1/2' live' starts from weathering plant associated with a
large complex.

APL Bk
past project
on document



SUI

S2

D

OZ

EJ

T

I

BoL

ALS

open

cool
sweaty
intermittent
sun

grass
trees
structures

low
sprouts

white
dumpy
red
green
yellow
smooth
grey
bumpy

like
sidewalk
feel

white

5+1/2 small like pines/evergreens. Fresh air smell. Difference in land elevation

structures

open

sprouts

curving
sub like residential area in hr. with place of woods curving thru landscaped areas

521

7
HS

#06 BK - Impression that there was a document that was at the DITE that is missing & they think it's somewhere else & are looking for it.

Structure

brownish
grey

massive

1/2 "like" a house. Some however of other than residential are
- "like" an office or HQ or etc. in a converted dwelling
place. Sense of being brownish - ochre & some concrete
on a slight elevation above a street curving along a
slight slope with a wall face around it & steps
leading to a door. 2 floors - other parts to
structures. Internal activities are not visible
to this level. It's "like" it's part of a large
federation/organization/agency - group of people bound
by common purpose & goal but more constraints
than just voluntary

light
blue



010
8755 (14-21)
21 Jan 88

Masonry Structure in Residential area

SUI

S2

D

A2

F1

I

I

002

AG

Set 1/2 inside beltway, not new construction

object



3 1/2 rounded, metal, thin-walled object secured to ceiling - I.F. overhead people go past + under it. Inside a structure

7

rounded, metal, thin walled object secured to ceiling - people go by and under.

Some to have secrets to do with President

1419

018
8728(N-2)
21 Jan 88

TAB K

84

