

Paul
18 May 87
F.F. W. W. W. W.
Ed
0845

SUI

5.2

Avu

Als

ma 4

grey
white
green
black

hallway
rooms

dim
light
dim
yellow

Sunny
floor

few
people

5 1/2 off-hours time

many
people
walking

busy

busy

medical
facility

S v I

SZ

D

A2

F I

T

I

HOL

Als

Smocks
badges
clipboards
people

Coordinating

people
uniforms

Structures

large
milit

oblong
angles
rectangular
beaks

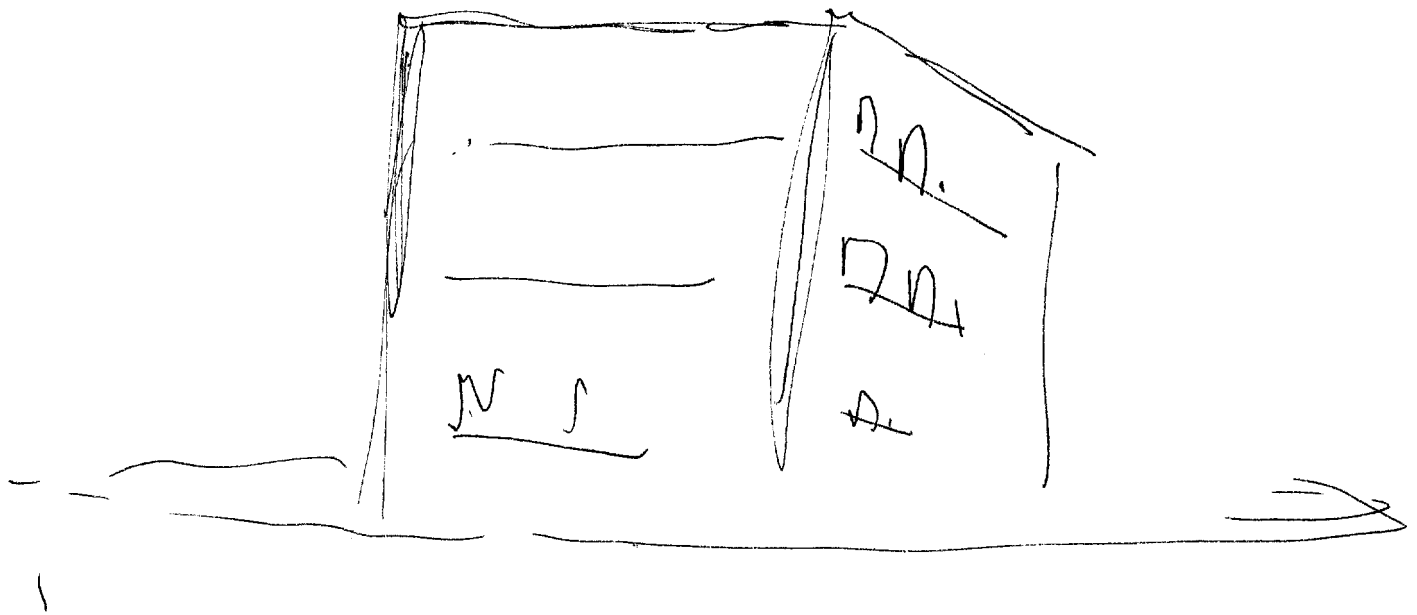
windtune

A2 BK
structure gives
me a loony feel

Are B/c
like
institutional
type activities
at McBrown
Kasner in
Munich

surrounded

sequestered



S 2

D

A 2

E I

T

I

W

ALS

2d Floor

Separate

S 4 1/2 Separate in function & support from other areas of structure. Purpose different. "like" Det E in Munich was in same bldg as SOD, but was entirely separate & autonomous operation.

S 4 1/2 Strong sense of technical & research sort of staff. While not dedicated exclusively to one project several different related & ~~unrelated~~ unrelated projects involved.

White

Weaponization phenomenon

SVE

DEL

ALG

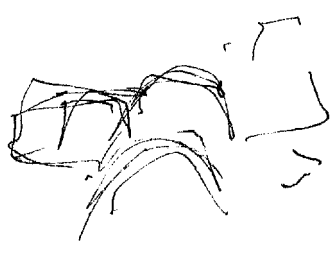
low
rounded

areas

inter

structure

curves
varied
element



Shop
work
assembly

lab

people

intrigued
& challenged

Craftsmen

S4 1/2 at current location "floors" don't count, not relevant

equipment

Sophisticated
assembly
testing

S4 1/2 ~~the~~ "one of a kind" fabrications. "Like" prototype production

S V I

52

D

M

E I

T

I

WOL

H

54/5 as it plans or ideas are generated elsewhere, but turned into tangibility here.

precision
measuring
meticulousness
professionalism

54/2 people working here have sense of pride, of being elite - the best in the field at what they do; but what they do is "technical" type things -

items
made

practical
testing

assess
results

54/2 used to determine if the results meet projected expectations.

No apparent common theme to objects and items "made" here. If something needs to be fashioned, no matter what it is, this place is called upon to do it.

metal

high-tensile
precision-made

SUI

7

52

D

A1

E1

T

I

Avl

Als

54 1/2 - "like" metal shop for post engineers. Its purpose is not to make just Vain gutters or ~~roof~~ roof vents, but to make anything having to do with metal from all over post; in great variety.

area #9

Avl Bk
Sketch sheet by
area

Open

flat

Structure

fund

restricted
electronics
measurement

~~ADD~~
confusion by

area #9

comment

rectangular

to link features

green

holding

Avl Bk
reminds me
of sewage
treatment plant

area of the building with a large w/ windows of architecture similar to structures at nuclear base. It is surrounded & sequestered. On 2nd floor activities occur that are separate & autonomous from rest of structure. Heavy sense of technical & research. People there are of various types & very various things. Several different projects both related & unrelated are being carried on at the same time.

area²⁵ involves a structure itself involving metal construction, rounded, ~~with~~ curved, with varied elements. People working are highly motivated, intrigued, challenged, proud of their work & feel they're among the best there are at what they do. They're skilled craftsmen or technicians who specialize in turning plans or concepts into tangible things. ~~There~~ there's a sense of "one of a kind" fabrication, as in prototype-construction. Items are made here to test out performance & capabilities previously projected or calculated in plans or on paper. A wide variety of things are made - this "shop" is not ^{concerned} with specialized production but can do "any thing." The concept of "floors" is not particularly relevant to this part of site.

0933