

Paul
2 May 88
Pt. Meade, MD
Solo/900;
1049

SVI

SZ

D

A1

E1

T

I

ABL

Als

Structure
swope

hard

metal
wood
piece
splinters
flames
fire

A1 Bx
a little
swope
or ~~some~~ disturbing

ABL/B1c
Reminds me
of Pearl Harbor

Billow by
swope
flame

A1 Bx
chicks

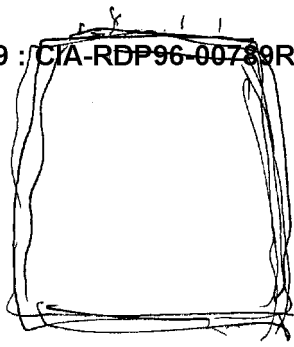
S4 1/2 Attack involves the air



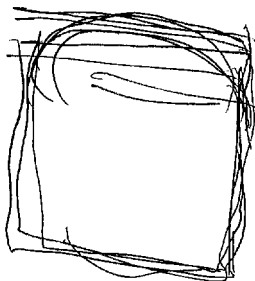
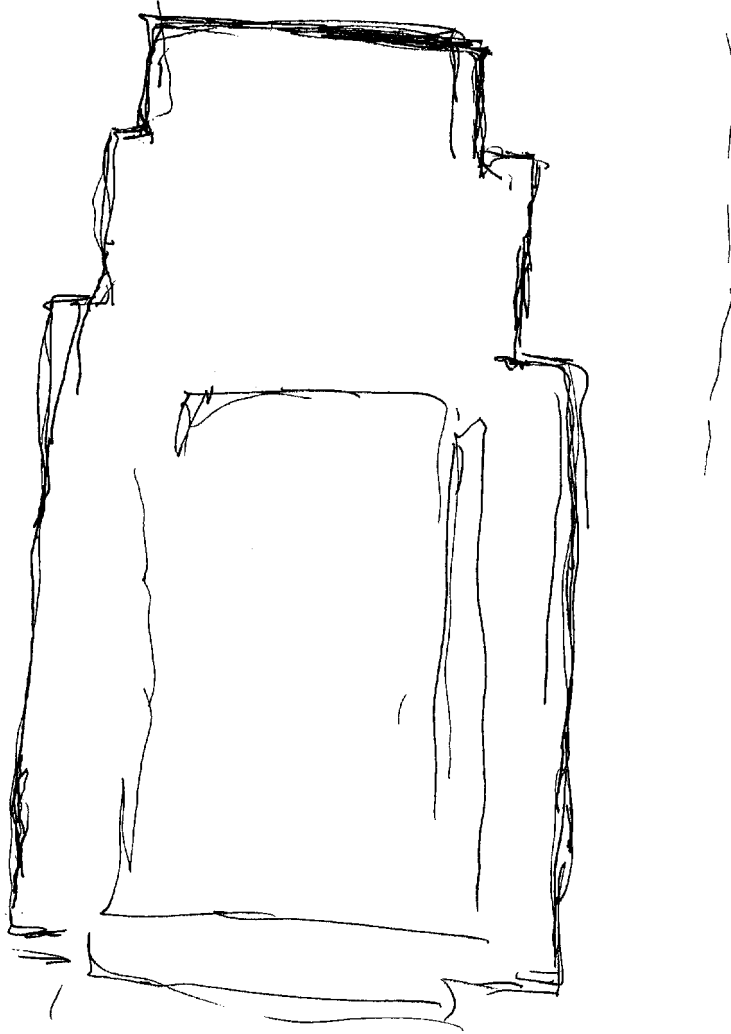
Dist. Water
point
→

possible
works





1



52 D AI EI T I AOL AS

Sel/2 Structure is dark neutral color, complex - with tall parts, corners, alcoves, frameworks, steps

AOL BK
Shop

Sel/2 Structure viewed from top after incident reveal billowing dark smoke, licking flames, twisted distorted structural components, debris, very large jagged gap in roof, people outside, dismayed, disoriented, others moving towards for damage control/recovery/rescue.

AOL/D
Pearl
Harbour

1115