

SECRET/NOFORN

PROJECT SUN STREAK

WARNING NOTICE: INTELLIGENCE SOURCES AND METHODS INVOLVED

PROJECT NUMBER: 8929 SESSION NUMBER: 03
DATE OF SESSION: 29 NOV 89 DATE OF REPORT: 11 DEC 89
START: 0955 END: ?
METHODOLOGY: SOLO VIEWER IDENTIFIER: 003


SG1A

SG1A

1. (S/NF/SK) MISSION: 

2. (S/NF/SK) VIEWER TASKING: Prod to the right left, over and under target area accessed in previous sessions.

SG1A

3. (S/NF/SK) COMMENTS: No inclemencies noted. A summary of information is attached to this report. 

4. (S/NF/SK): EVALUATION:

SG1A

5. (S/NF/SK) SEARCH EVALUATION:

HANDLE VIA SKEET CHANNELS ONLY

SECRET/NOFORN

CLASSIFIED BY: DIA (DT)
DECLASSIFY: OADR

~~SECRET~~

Working paper

Proj. no: 8929
Date: 29 Nov 89
Viewer: 003
Session: 003?
Monitor: Solo

Summary of Information

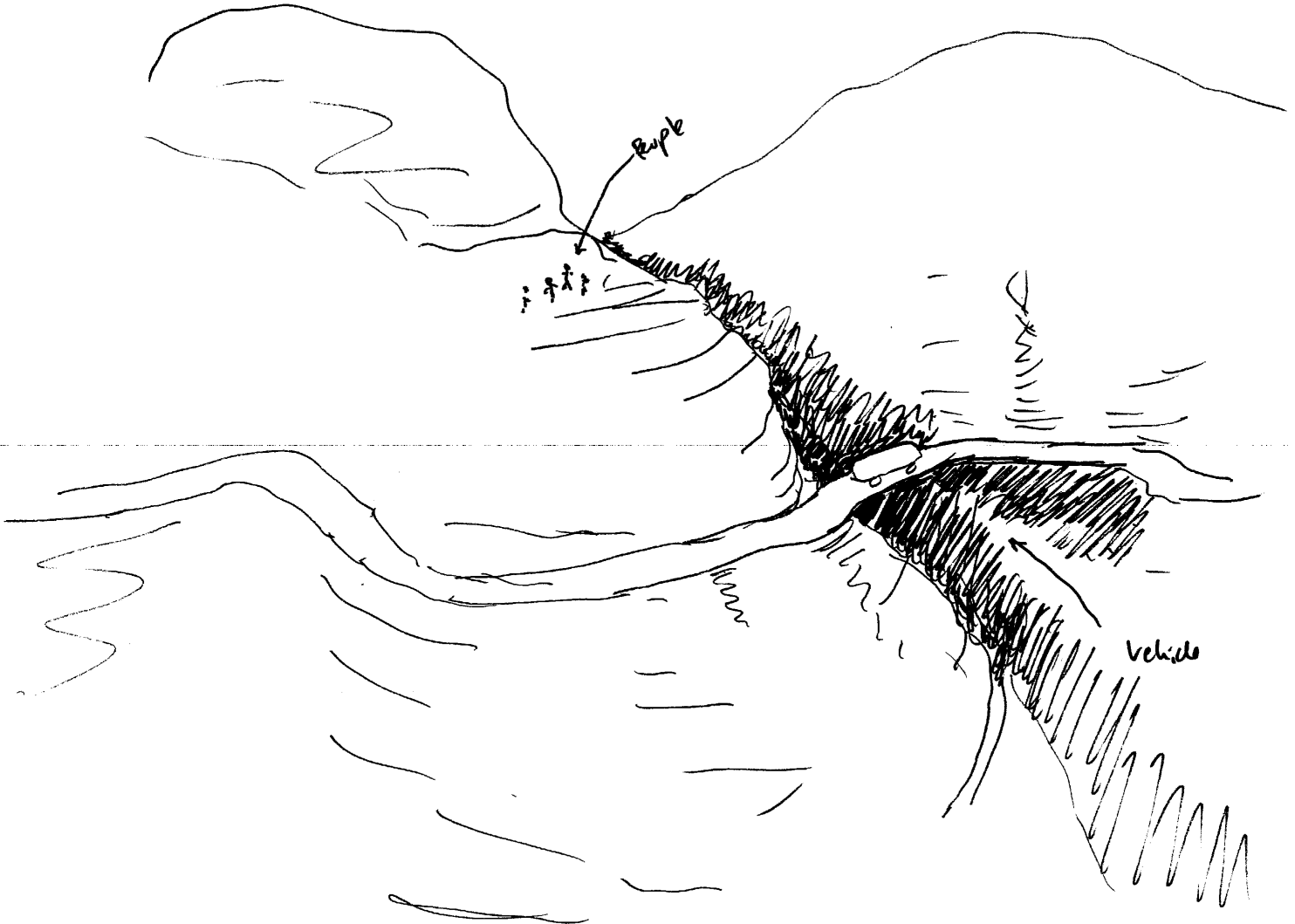
Vehicles moving along a twisty, mountainous road, with a steep bluff on one side and a steep drop off on the other. Impression of people on top of the crest of the bluff side, as well as an impression of one lone vehicle moving onto a surface on the road that is flat, metallic, non-skid, with sloping-down space under it, "like" a bridge made of PSP (perforated steel planking). There is a further impression that some sort of action is undertaken against this vehicle by a person or persons external to it, with the feeling of it being some sort of hostile act, such as firing upon it or setting off explosives.

Handle Via SKEET Channels Only

~~SECRET~~

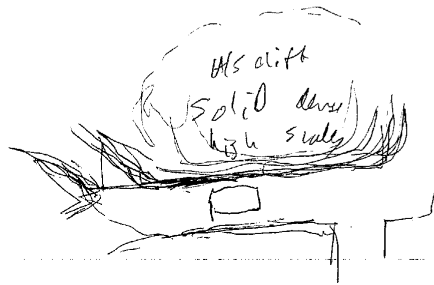
Conceptual Sketch

Approved For Release 2000/08/09 : CIA-RDP96-00789R003500840004-8



Approved For Release 2000/08/09 : CIA-RDP96-00789R003500840004-8

Paul
29 Nov 89
F. W. W. W. W. W.
S. D. O.
0955



o/s
ambush
feeling

people on top
open to
str

PI 56
VAT 13

down side
[faded handwritten notes]

SVT

S2 D H EJ T I A-02 ADE/S

Tall
~~Solid~~
Solid

light
color

hard

Structure

S4 Twisty, roman road, ~~light~~ places one side, drop off
other side, metal "like" Psp underneath
sloping space.

Handwritten scribbles or marks in the center of the page.

~~CONFIDENTIAL~~

WORKING PAPER

TASKER

1. PROJECT: 8929.
2. ENCRYPTED COORDINATES: 291100/433974.
3. BACKGROUND: The Encrypted Coordinates represent a specific target at a given geographical location.
4. MISSION:
 - a. Describe the target at Encrypted Coordinates 291100/433974.
 - b. Provide sketches in support of your findings.

~~CONFIDENTIAL~~

~~SECRET~~

WORKING PAPER

TASKER

1. PROJECT: 8929.
2. ENCRYPTED COORDINATES: 291100/433974.
3. BACKGROUND: The Encrypted Coordinates represent a specific target at a given geographical location.
4. MISSION:
 - a. Describe the target at Encrypted Coordinates 291100/433974.
 - b. Provide sketches in support of your findings.

~~SECRET~~