

~~1/STD~~

20 Feb 90

WORKING PAPER

Reply to
Attn of: DIA (DT-S)

SUBJECT: SUN STREAK Project 9003-II (U)

TO: HQDA
ATTN: DAMI-IO

1. (U) Reference Memorandum, DT-S, Subject: Project 9003, and dated 8 Feb 90.

SG1A

2. (S/STD) The following is submitted as a corollary to reference Para 1, and describes the target vessel identified as [redacted] and the contraband in the form of illegal drugs believed to be aboard ship.

a. (S/STD) The vessel was described as a grey, metal, motorized vessel with cranes. It was additionally defined as a working vessel.

b. (S/STD) There appeared to be two types of illegal contraband aboard ship in the form of drugs. One type was simply described as strong while the second was believed to be mild.

c. (S/STD) The illegal contraband seemed to be stored amidship, specifically, slightly forward of amidship and to the port side. The drugs were stored in plastic bags. No extra ordinary measures appears to have been taken to conceal the presence of the drugs.

3. (U) Related sketches in the form of conceptual representations, are at TAB A through TAB D inclusively.

SG1J

[redacted]

Branch Chief

Phase II

ENCLOSURES
Tab A thru D

*Classified by HQDA (DAMI-10)
Declass: OADR*

~~1/STD~~

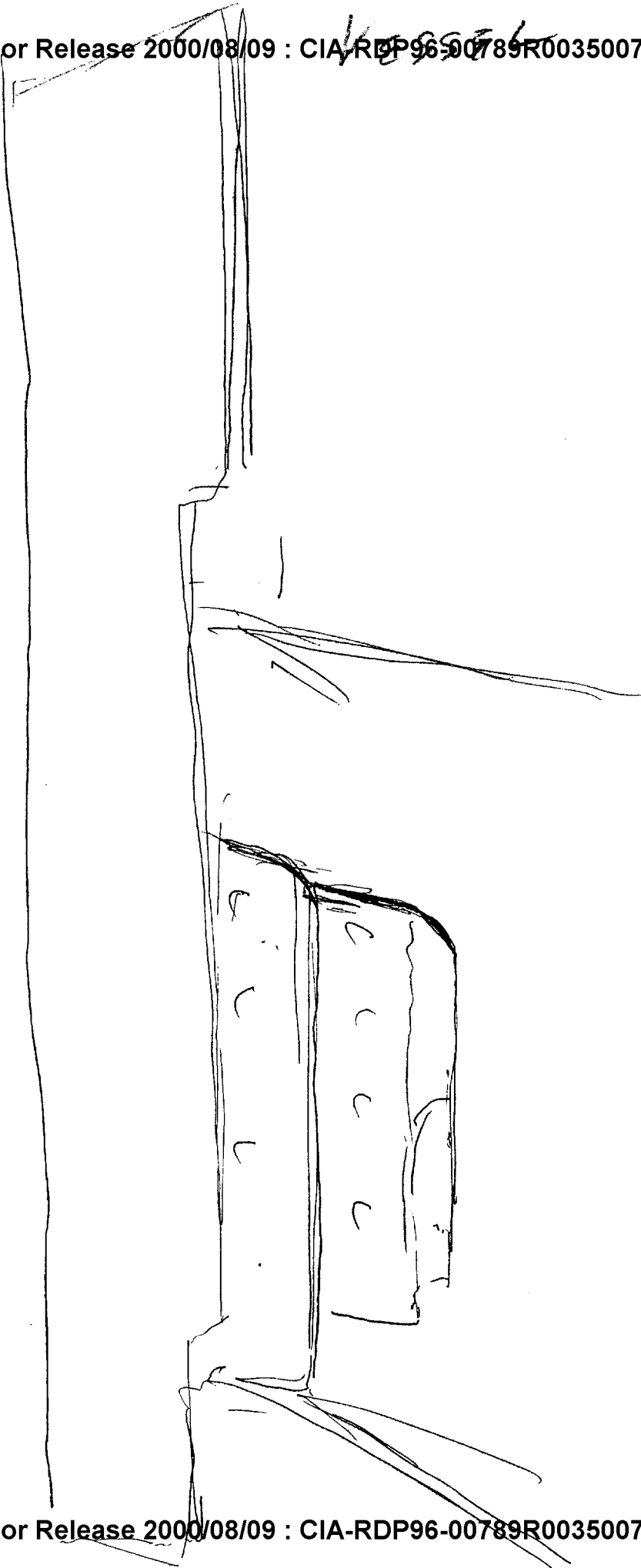
66

R. 4003-IT

D. 400209

V: 003

S: 02



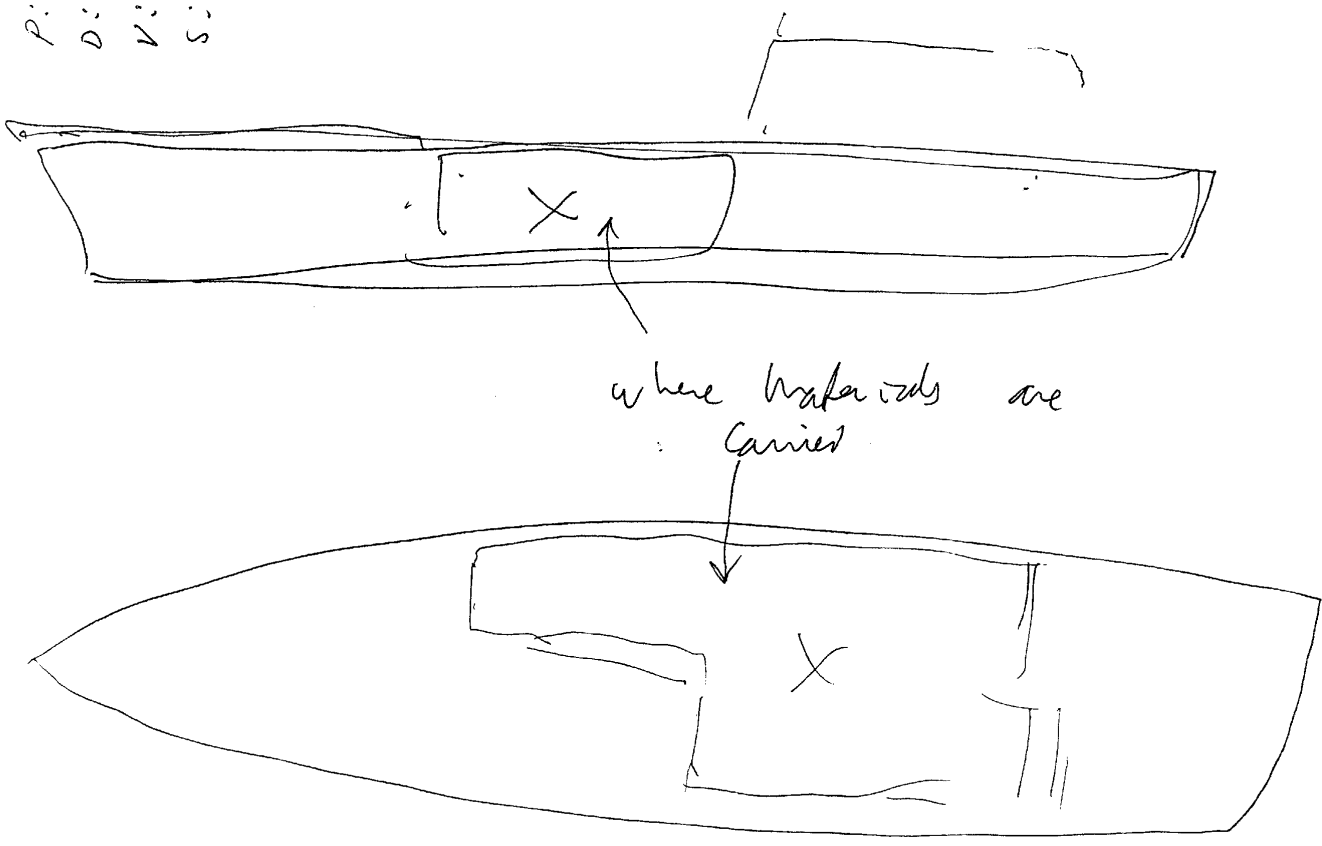
TAB A

LOCATION OF DRUGS

P: 9003-II
D: 900209
V: 003
S: 02

Approved For Release 2000/08/09 : CIA-RDP96-00789R003500740008-5

TAB B



They not occupy entire volume available,
 but dispersed in "lots" throughout.
 Indicate some of the large quantities.

Approved For Release 2000/08/09 : CIA-RDP96-00789R003500740008-5

~~SECRET~~
WORKING PAPER

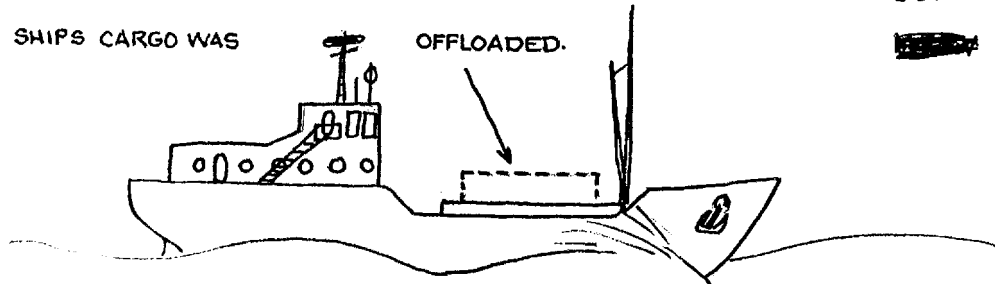
P 9003 - ~~4~~

D 900215

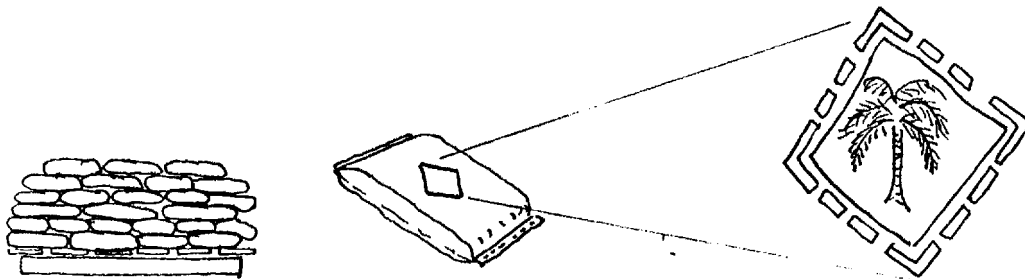
V 011

S 01

A RECTANGULAR, TARP- COVERED OBJECT SITTING ON TOP
OF CARGO HOLD. THIS OBJECT WAS NOT PRESENT WHEN
SHIPS CARGO WAS OFFLOADED.



SMALL VESSEL WITH ONE FORWARD BOOM.



CARGO IN THE HOLD CONSISTS OF WOODEN PALLETS WITH STACKS OF BAGS CONTAINING
A POWDERY OR GRANULAR SUBSTANCE, WHICH IS NOT CONTRABAND (AOL - BAGS OF CONCRETE).
THESE BAGS HAD A DIAMOND-SHAPED LABEL WITH A PALM LEAF, OR PALM TREE IN IT.
THIS CARGO WAS OFF-LOADED VERY MUCH IN THE OPEN. I COULD NOT DETERMINE IF
THERE MIGHT HAVE BEEN SOMETHING CONCEALED INSIDE THE BAGS.

SHIP WAS SLOWLY HEADING
NORTH ALONG COASTLINE. SEAS
WERE ROUGH, AND THE WIND WAS
STRONG AND COLD.



~~SECRET~~

F A B C

P: 9063-II
D: 9002.09
V: 018
S: 02.

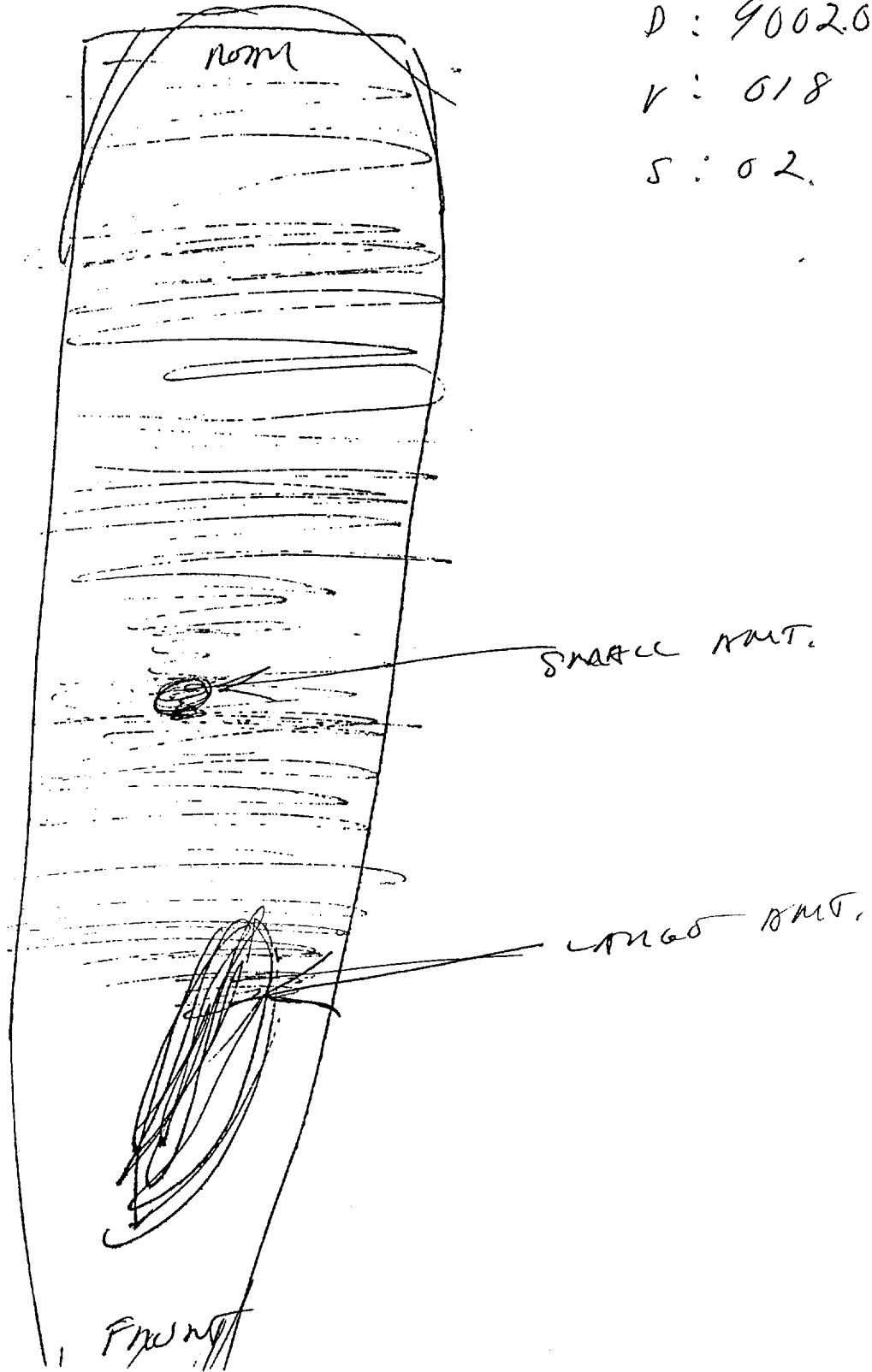


FIG. 5