

Research of Anomalous Mental Phenomena Proof-of-Principle and Protocols

by

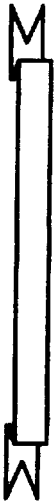
Edwin C. May, Ph.D.

Science Application International Corporation

Cognitive Sciences Laboratory

Menlo Park, California

30 March 1993



SATC

BRIEFING OBJECTIVE

- PROVIDE RETROSPECTIVE VIEW OF EVIDENCE FOR PROOF-OF-PRINCIPLE
- PROVIDE DETAILED PROTOCOL FOR REPLICATION

SATC

BRIEFING OUTLINE — I

- DEFINITION OF TERMS
- SCHEMATIC PROTOCOL FOR A SINGLE TRIAL
 - Three Examples of Data
- ANALYSIS
 - Rank-order Tests
 - Fuzzy Sets
- RETROSPECTIVE VIEW
 - Statistical Criteria
 - Literature Reviews

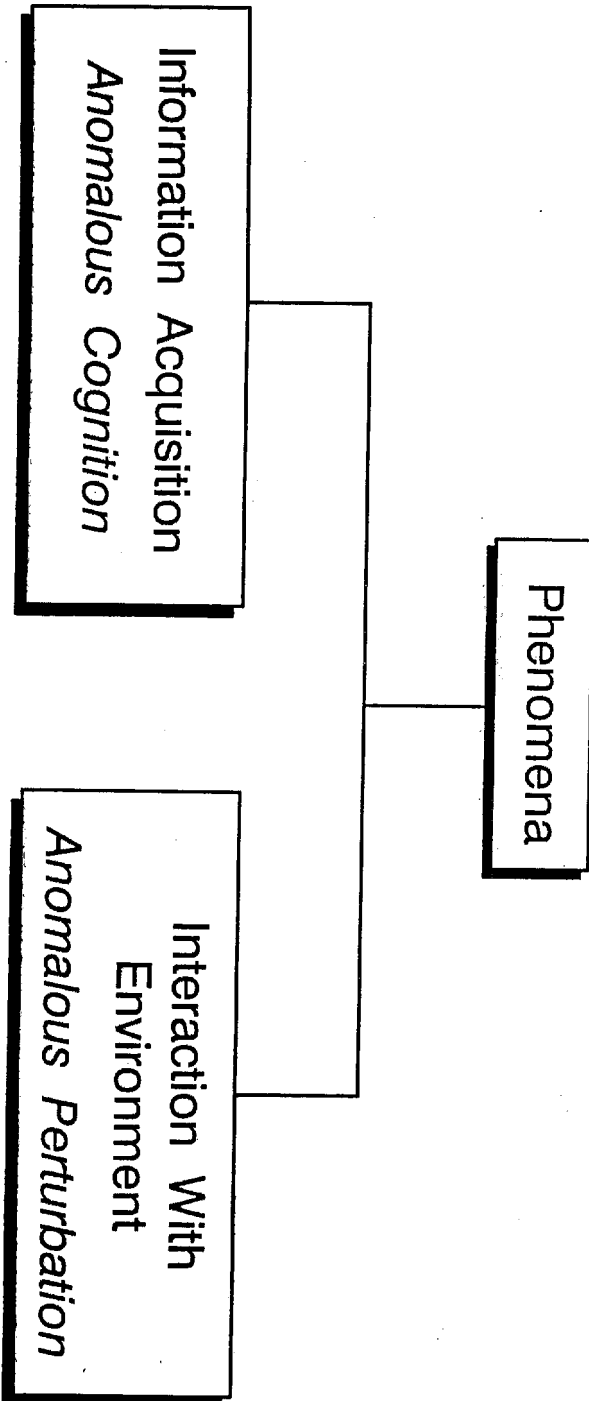
The logo for SAIC (Science Applications, Inc.) is located in the bottom right corner of the page. It consists of the letters "SAIC" in a bold, stylized font, with horizontal lines extending from the bottom of the letters.

BRIEFING OUTLINE — II

- REQUIREMENTS FOR REPLICATION
 - Power Analysis
 - Personnel Selection
 - Target Pool Selection
 - Trial Protocol
 - Analysis/Control
 - Criteria for "Success"
 - Estimated Person-Hours



ANOMALOUS MENTAL PHENOMENA



ANOMALOUS COGNITION — A DEFINITION

- **ANOMALOUS COGNITION.** A form of information transfer in which all known sensorial stimuli are absent. That is, some individuals are able to gain access, by an as yet unknown process, to information that is not available to the known sensorial channels.

SAIC[®]

RESEARCH MATERIALS — SINGLE TRIAL

- TARGET
 - Outdoor Scene (e.g., Golden Gate Bridge)
 - Photographs (e.g., Paris)
 - Physical Object (e.g., Feather)
 - Geometric Shape (e.g., Star)
 - Symbol (e.g., 7, H)
- RESPONSE
 - Written/Drawn
 - Audio/Video Tape
- ANALYSIS
 - Fuzzy Sets
 - Rank Order



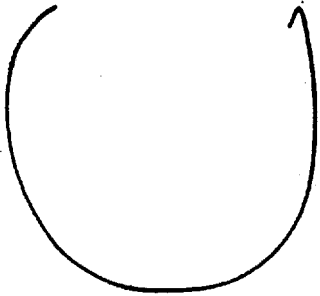
SINGLE-TRIAL SESSION PROTOCOL (Schematic)

TIME	EVENT
10:00	Monitor and Receiver are Sequestered
10:05	Assistant Randomly Selects One Photograph From a Set of 100
10:10	Session Begins
10:25	Session Ends
10:30	Raw Data is Copied and Secured: Target is Obtained
10:35	Response and Intended Target are Discussed with Receiver



NOVICE RECEIVER (R177) — RESPONSE

Target



- Skiered
- smooth / rounded

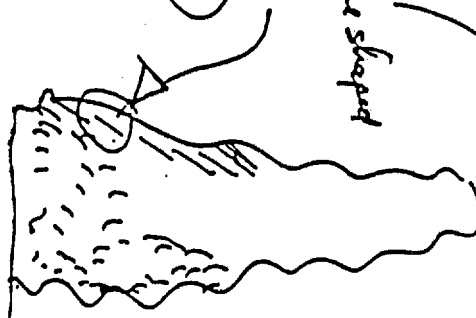
break

Target



- tall cone shaped
- fuzzy
- tree

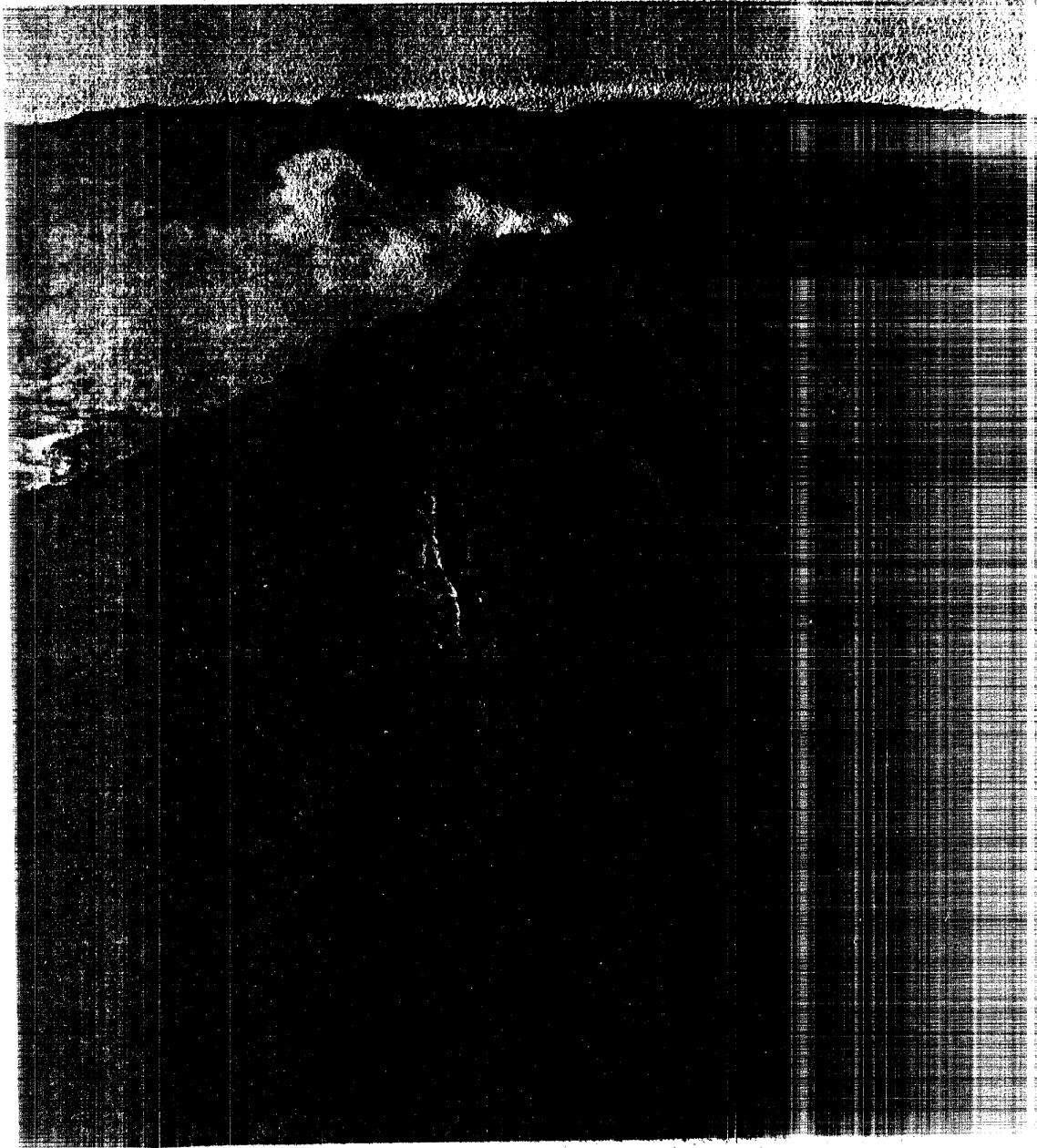
break



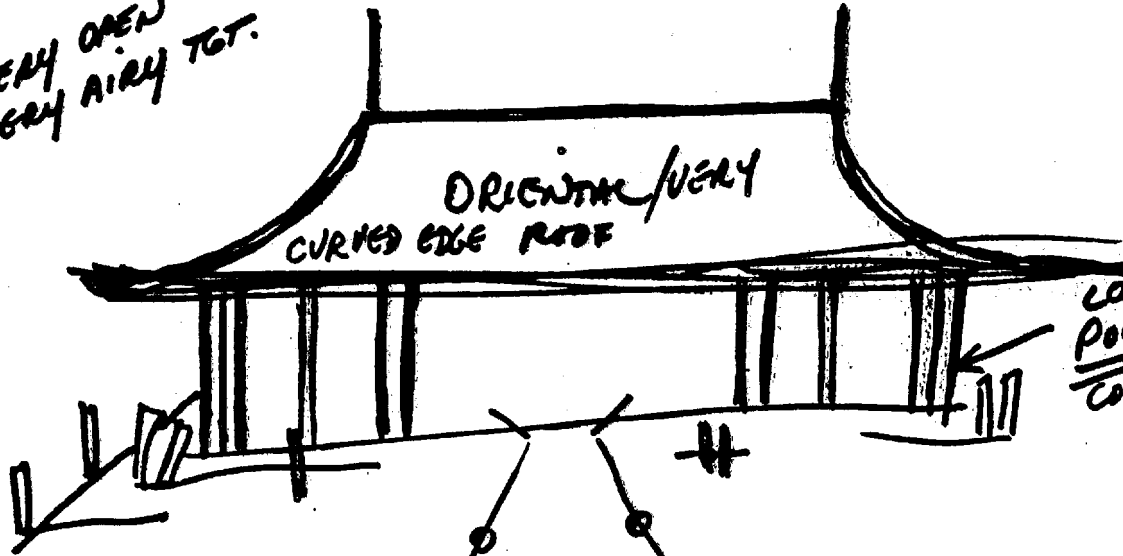
Suspend down
@ leader of the
bottom

end of session





VERY OPEN
VERY AIRY TGT.



LOTS OF POLES IN CONSTRUCTION

NOTE: SOMETHING LIKE A FENCE PRESENT BUT NOT A FENCE - LIKE ROWS OF VERTICAL LINES W/ A FEW HORIZONTALS.

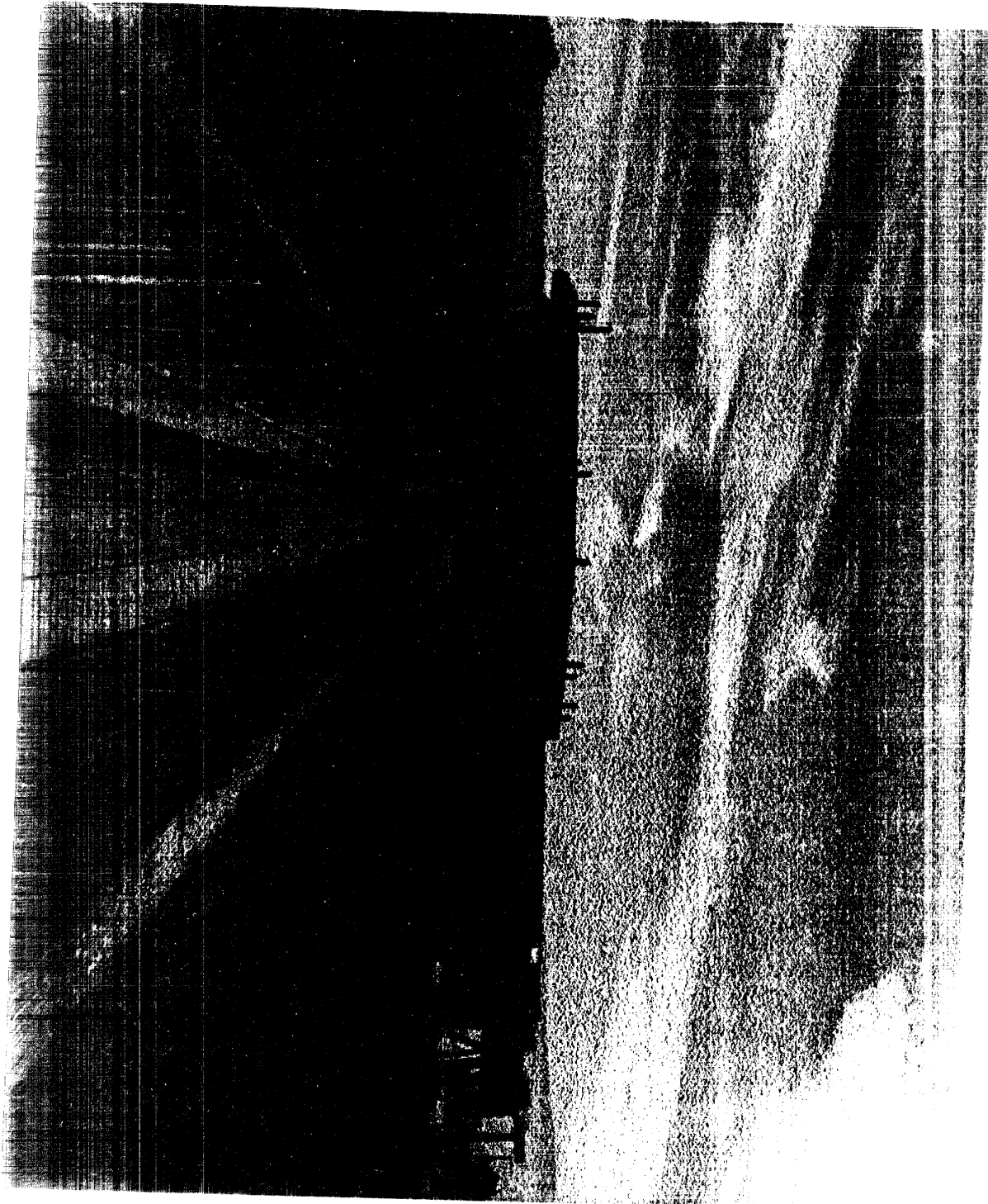
STAND ALONG STRUCTURE - ISOLATED.

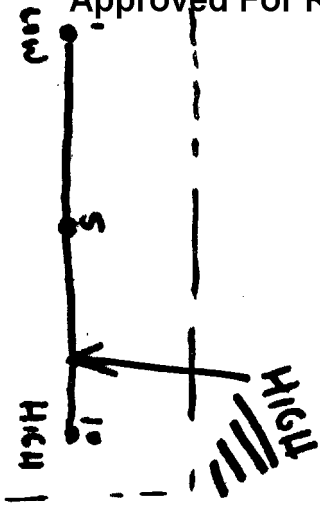
SOME KIND OF ROUND OBJECTS BOTH SIDES.

↑
LIKE LOOKING AT SOMETHING THAT NARROWS AS IT GOES AWAY FROM WHERE YOU STAND. (PERSPECTIVE)

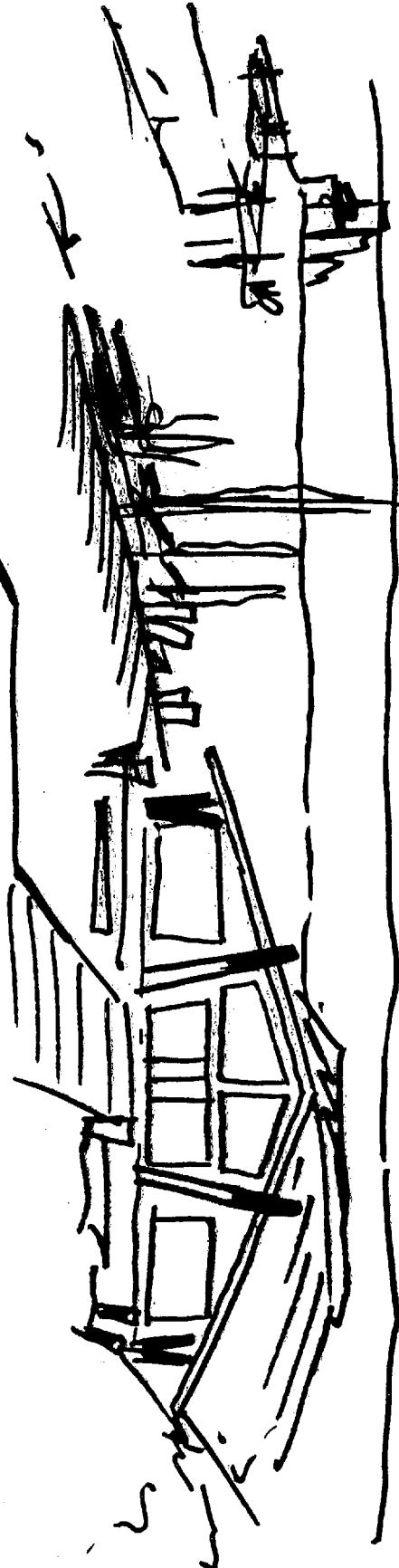
FLAT WATER - NATURAL WATER AT SITE.
LOCATED AT EDGE OF WATER.

- QUIET
- SOLITUDE
- SET ASIDE
- EITHER SIDE
- TALLER OBJECTS IN BACKGROUND.





PARKING



- SINGLE STRUCTURE - BLDG.
- DARK BRUSH.
- NEXT TO EDGE OF WATER
- BOATS
- LARGE PARKING AREA.



RANK-ORDER ANALYSIS OF A SINGLE AC RESPONSE

- THE TARGET WAS SELECTED RANDOMLY FROM 100
 - 20 Packs of 5 Targets Each — Pack Chosen First
 - Given the Pack, the Target is Randomly Chosen
 - This particular pack contains the target and 4 non-targets (Decoys).
- ANALYST'S TASK
 - Rank-order the 5 Photographs in the pack from the Best to the Worst Match to the Given Response

Original Order		Rank Order Match Number				
Target	1	} — Response —	Target	3	1st	Place
Target	2		Target	4	2nd	Place
Target	3		Target	2	3rd	Place
Target	4		Target	1	4th	Place
Target	5		Target	5	5th	Place



FUZZY SET ANALYSIS OF A SINGLE AC RESPONSE

- 100 TARGETS PREVIOUSLY CODED AS FUZZY SETS
 - Intended Target is Selected Randomly
- RESPONSE IS CODED AGAINST THE SAME UNIVERSAL SET
- COMPUTATIONS (i.e., Normalized Fuzzy Intersections)
 - Accuracy: The Percent of the Target which is Described Correctly
 - Reliability: The Percent of the Response which is Correct
 - Figure-of-Merit (FM): Accuracy \times Reliability
- FMS ARE COMPUTED FOR ALL 100 TARGETS AND ORDERED
- PROBABILITY VALUES ARE DETERMINED BY LOCATION OF THE INTENDED TARGET'S FM IN THE LIST



RETROSPECTIVE: STATISTICAL CRITERIA — I

- CONSIDER THE FOLLOWING TWO EXPERIMENTS

— Coin Flips(1): $n=500$, Heads= 275

$$Z = \frac{2 \left(\text{Heads} - \frac{n}{2} \right)}{\sqrt{n}} = 2.24, p \leq 0.01$$

— Coin Flips(2): $n=250$, Heads= 138

$$Z = 1.58, p \leq 0.06$$

- COMBINED RESULTS

— $n=750$, Heads= 413

$$Z = 2.78, p \leq 0.003$$



RETROSPECTIVE: STATISTICAL CRITERIA — II

- EFFECT SIZE (ES)

— Coin Flips(1): $n=500$, Heads= 275 , $Z=2.24$, $p \leq 0.01$

$$ES = \frac{Z}{\sqrt{n}} = 0.10$$

— Coin Flips(2): $n=250$, Heads= 138 , $Z=1.58$, $p \leq 0.06$

$$ES = 0.10$$

— Combined Results: $n=750$, Heads= 413 , $Z=2.78$, $p \leq 0.003$

$$ES = 0.10$$

SATC

LITERATURE REVIEWS (META-ANALYSIS)

- ANOMALOUS COGNITION — COMPLEX TARGETS
 - H. E. Puthoff and R. Targ, *Proceedings of the IEEE*, 1976
 - $n=39$, $ES=1.13\pm 0.16$, $Z=7.06$, $p \leq 8.5 \times 10^{-13}$
 - I. L. Child, *American Psychologist*, 1985
 - $n=83$, $ES=0.51\pm 0.11$, $Z=4.61$, $p \leq 2.0 \times 10^{-6}$
 - D. J. Bem and C. Honorton, *Psychological Bulletin*, 1993
 - $n=355$, $ES=0.20\pm 0.05$, $Z=3.73$, $p \leq 9.6 \times 10^{-5}$
- ANOMALOUS COGNITION — SYMBOL TARGETS
 - C. Honorton and D. C. Ferrari, *Journal of Parapsychology*, 1989
 - $n \approx 2 \times 10^6$, $ES=0.020\pm 0.002$, $Z=10$, $p \leq 8 \times 10^{-24}$

SATC