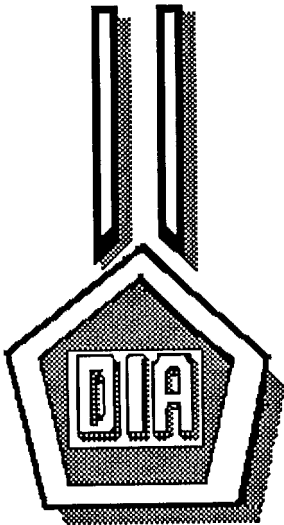


SECRET

DTI-S-1054-SL



**DEFENSE
INTELLIGENCE
AGENCY**

**PROFICIENCY PROJECTS:
"B" SERIES (U)**

4 FEBRUARY 1993

**NOFORN
SECRET
LINDIS**

STAR GATE

S E C R E T

PROFICIENCY PROJECTS: "B" SERIES

SHORT TITLE: DTI-S-1054-SL

Date of Publication

4 February 1993

**This document was prepared by the
Directorate for Scientific and Technical Intelligence,
Defense Intelligence Agency.**

**REPRODUCTION REQUIRES
APPROVAL OF ORIGINATOR
OR HIGHER DOD AUTHORITY**

**FURTHER DISSEMINATION
ONLY AS DIRECTED BY DT
OR HIGHER DOD AUTHORITY**

NOT RELEASABLE TO FOREIGN NATIONALS

**CLASSIFIED BY: DIA/DT
DECLASSIFY ON: OADR**

**S E C R E T/NOFORN/LIMDIS
STAR GATE**

~~SECRET~~

PREFACE

(S/NF/SG/LIMDIS) This report is part of a series that summarizes proficiency project activity conducted by DTI-S personnel. It contains a discussion of basic procedures, and includes an assessment of results. Specifics on targets, data summaries, and evaluations are contained in the appendix.

-i-

~~SECRET~~/NOFORN/LIMDIS
STAR GATE

U N C L A S S I F I E D

CONTENTS

PREFACE

	<u>PAGE</u>
I PURPOSE	1
II BACKGROUND	1
III DISCUSSION	2
IV SUMMARY OF RESULTS	7
V FUTURE PROFICIENCY ACTIVITIES	13

APPENDIX:

A - TARGET A.....	A-1
B - TARGET B.....	B-1
C - TARGET C.....	C-1
D - TARGET D.....	D-1
E - TARGET E.....	E-1
F - TARGET F.....	F-1
G - TARGET G.....	G-1
H - TARGET H.....	H-1
I - TARGET I.....	I-1
J - TARGET J.....	J-1

U N C L A S S I F I E D

APPENDIX, CTD:

K - TARGET K.....	K-1
L - TARGET L.....	L-1
M - TARGET M.....	M-1
N - TARGET N.....	N-1
O - TARGET O.....	O-1
P - TARGET P.....	P-1
Q - TARGET Q.....	Q-1
R - TARGET R.....	R-1
S - TARGET S.....	S-1
T - TARGET T.....	T-1

~~SECRET~~

LIST OF FIGURES

		PAGE
FIGURE 1	TASKING SHEET	4
FIGURE 2	EVALUATION SCALES	6
FIGURE 3	INDIVIDUAL AVERAGES	11

LIST OF TABLES

TABLE 1	RATING DATA SUMMARY	8
TABLE 2	RATING DATA SUMMARY, ctd	9
TABLE 3	INDIVIDUAL AVERAGES	10

-iv-

~~SECRET~~/NOFORN/LIMDIS
STAR GATE

~~SECRET~~

PROFICIENCY PROJECTS: "B" SERIES

I (U) PURPOSE: (S/NF/SG/LIMDIS) The primary purpose of this proficiency "B" series was to provide project personnel with a variety of general interest targets for their own proficiency enhancement or development. A secondary purpose was to examine the data for trends useful in future proficiency or operational activity.

II (U) BACKGROUND:

(U) Basic approaches for in-house proficiency activity was defined in DT-S-1031-SL, Procedures for Special Proficiency Targets, 5 April 1991, and in DT-S-1039-SL, Proficiency Enhancement Projects, 21 June 1991. Evaluation procedures for these types of projects were presented in DT-S-1046-SL, Proficiency Program Reporting and Evaluation, 3 Jun 1992.

(S/NF/SG/LIMDIS) This report is part of the on-going proficiency activity conducted by DTI-S personnel. This particular series was defined in advance to consist of 20 targets that were randomly drawn from pre-established target pool consisting of pictures of people from diverse population groups.

(S/NF/SG/LIMDIS) The basic objective was for project viewers to describe the specific target personality. Only public information contained in the picture (or accompanying article) would be sought. This would include appearance, age-group, race, key orientations/actions, or other apparent features. In some cases, dominant background information (e.g., colors, buildings/shapes, setting) were considered as a pertinent part of the target personalities' picture and were included for evaluation. All key aspects/features, however, were identified in advance during target pool preparation.

(S/NF/SG/LIMDIS) This proficiency "B" series, therefore, gave project viewers a chance to see how well they could perform on "people". These results will assist in task/person matching and in estimating data reliability for application projects that would involve foreign personalities as potential targets.

~~SECRET~~/NOFORN/LIMDIS
STAR GATE

~~SECRET~~

III (U) DISCUSSION:

1. (U) Basic Procedures:

(S/NF/SG/LIMDIS) This proficiency series employed standard remote viewing approaches used by DTI-S personnel. To examine possible effects in targeting conditions, two targeting protocols were manipulated: (1) the targets would either be known to a beacon person; or (2) the specific targets would not be known to anyone (i.e., double blind, no beacon person condition). It was defined in advance to select approximately an equal number of beacon person and no beacon person targets. This condition was not randomized so that the schedule of available beacon persons could be accommodated.

(U) Basic protocols, records, and other aspects of this proficiency series were performed according to previously established procedures that are reported in documents cited in the background section.

(S/NF) Due to the small number of targets in this series, definitive conclusions should not be drawn from the results. However, it was anticipated that data trends might be observed that could be useful for certain aspects of future proficiency and possibly operational projects.

2. (U) Target Pool:

(S/NF) The 20 targets used in this series were selected from an extensive target pool based on pictorial material extracted from readily available magazines (e.g., National Geographic, Newsweek, various trade or travel magazines). The material could be anything published within the past 20 years. This particular pool is relatively homogeneous in that it contains a wide variety of people/personalities. Some of them are quite similar, although sufficient differences exist for data differentiation.

(S/NF/SG/LIMDIS) The criteria for selecting pictures for this target pool included diversity and uniqueness of content, as well as definitive and clear features to avoid ambiguousness in target comparisons. Targets in this pool were previously sealed in opaque envelopes and secured in a special office file. Once

~~SECRET~~/NOFORN/LIMDIS
STAR GATE

~~SECRET~~

selected, the target was not replaced back into the target pool. This procedure was used to avoid problems observed in the past when identical targets are used with little time separation between projects. This eliminates influence of memory of previous targets, especially when trial-by-trial feedback is used.

3. (U) Session Procedures:

(S/NF) Targets for each session were selected randomly from the target pool and placed in a dedicated, secure safe drawer. When no beacon person was involved, the target would remain unopened until after all the viewer's data was recorded and given to the project officer. When a beacon person was involved, the beacon person would open the envelope, observe the target, and place it in the secure file drawer. No other person would be permitted access to this target and the beacon person would not in any way discuss the target until after all data were recorded and given to the project officer.

(S/NF/SG/LIMDIS) A typical tasking sheet for the viewers is shown on figure 1. Other data records are on the viewers response forms as shown in the appendix material.

(S/NF/SG/LIMDIS) Upon completion of all records for each target, the viewer (sources) were only then provided access to the target for trial-by-trial feedback and preliminary evaluation.

(S/NF/SG/LIMDIS) All three of the current viewers on the DTI-S staff were involved in this series. Not all projects could be worked by some individuals due to leave or TDY. An individual not involved in viewing activity and who had no prior viewing experience was used as a "control person". The control persons data is included in this report and evaluated according to the same procedures established for evaluating the viewers data.

4. (U) Evaluation:

(S/NF/SG/LIMDIS) All targets were independently evaluated by comparing the viewers data to the target picture according to two data categories (concept/generic; specifics/analytic). Four or five statements had been prepared in advance for these two data categories were also included in the sealed target envelopes. They were prepared to help provide

~~SECRET~~/NOFORN/LIMDIS
STAR GATE

FIGURE 1

TASKING SHEET

SOURCE NO: _____

DATE: 5 OCT 92

SUSPENSE: 5 OCT 92

1600 hrs

1. PROJECT NUMBER: 92-108-P

2. METHOD/TECHNIQUE: Method of Choice.

3. BACKGROUND: None.

4. ESSENTIAL ELEMENTS OF INFORMATION: _____

----Describe the target personality.

5. COMMENTS: _____

----Optional Coordinates: 226231/800253

~~SECRET~~

a consistency in judging and to clarify the content of the two target categories. These statements are also included in the appendix for each target. A "value factor" is also identified to indicate those target elements considered to be more important than others as an additional assist in data evaluation.

(U) Occasionally, a viewer's response consists primarily of specific or "naming" data. In this case, the generic data category would be given a provisional rating based on the content of the specifics provided.

(S/NF/SG/LIMDIS) It has been suspected that the viewers initial data is of a "pattern-making" or concept identification nature. Later data tends to be more specific, eventually leading to higher precision in identifying or "naming" the target. Thus, evaluating the data according to these data categories would be consistent with the viewers natural process. Examining the data from this perspective could also add insight on individual strengths or preferences.

(S/NF) Response assessments were based on a basic evaluation scale as shown on figure 2. Experience has shown these scales to be generally reliable and adequate for evaluation of data in projects of this type. Detailed evaluation methods are also available that can be used to refine evaluation of this series or to apply to future projects.

(S/NF/SG/LIMDIS) All results were initially assessed by the project officer and the branch chief for correlation to the two basic data categories. An individual external to the DTI-S unit and judged to be neutral to this area was also used as a third evaluator. An "average" of all three evaluations was then computed and recorded on the evaluation records form.

(S/NF/SG/LIMDIS) All results were initially assessed by the project officer and the branch chief for correlation to the two basic data categories. An individual external to the DTI-S unit and judged to be neutral to this area was also used as a third evaluator. An "average" al all three evaluations was then computed and recorded on the evaluation records form.

~~SECRET~~/NOFORN/LIMDIS
STAR GATE

FIGURE 2

EVALUATION SCALES

NUMERICAL RATING	APPROX. DEGREE OF DATA CORRELATION PERCENT	DESCRIPTION
0	0-10	LITTLE OR NO CORRELATION
1	10-30	MIXTURE OF RELEVANT AND INCORRECT DATA WITH MAJORITY INCORRECT
2	30-50	
3	50-70	MIXTURE OF RELEVANT AND INCORRECT DATA WITH MAJORITY CORRECT AND UNAMBIGUOUS
4	70-90	
5	90-100	VERY HIGH TARGET CORRELATION WITH ESSENTIALLY NO AMBIGUOUS DATA

~~SECRET~~

IV (U) SUMMARY OF RESULTS:

(U) Overall results from this series of 20 targets (A through T) are shown on table 1 and table 2 for the three viewers (1, 2, 3) and the control person (C). Both data categories (a, b) are also shown. For quick reference, the appendix is keyed to the same target identifier. The general nature of the target is shown on the tables to facilitate target-type comparisons.

(S/NF/SG/LIMDIS) Since the evaluation scale is based on a 0-5 (and corresponding 0-100) rating scheme, ratings of 2+ to 3- (40-60) or higher would support the possibility that the viewer was in fact accessing at least some of the target material. For the conceptual/generic data category (a), one person scored a 2+ or more on 5 targets, another scored 2+ or more on 6 targets, and the third scored 2+ or more on 2 of the targets. The control person who made "random guesses" scored considerably lower, on the average, than the viewers did. Results were not as good, overall, for the analytic data category (b); however, the viewers data were better for most of the targets than the control person for this data category.

(S/NF/SG/LIMDIS) Table 3 and figure 3 show overall averages for the viewers and the control person. Not all viewers were able to work all 20 projects due to leave or TDY commitments.

(S/NF/SG/LIMDIS) As in the previous proficiency study (DTI-S-1052-SL; Proficiency Projects: "A" Series), there was little difference between the "beacon" and the "no beacon" condition. Some viewers appeared to do better in the "no beacon" condition; however, the small sample size limits conclusions.

(S/NF/SG/LIMDIS) One of the viewers (No. 2) score was considerably lower than for previous proficiency projects. It may be that this individual's subliminal preference is for other target categories (i.e., those involving geometric shapes or area sites), and not for people-related targets. Such a preference is important for estimating results in potential application tasks.

(S/NF/SG/LIMDIS) It was difficult to identify viewer/target preferences for this series. Results were quite variable and not consistent. Some viewers did, however, appear to do better on target that had sharp contrasts, implied dynamics (e.g., specific activity, or motions).

~~SECRET~~/NOFORN/LIMDIS
STAR GATE

~~SECRET~~

TABLE 1

RATING DATA SUMMARY

TARGET TYPE (1)	TARGET I.D.	AVERAGE RATING (2)							
		V. No.1		V. No.2		V. No.3		C (3)	
		a	b	a	b	a	b	a	b
NB	A POLICEMAN	60	20	1	0	21	18	21	7
B	B OLD WOMAN	19	23	13	4	4	4	15	13
B	C RAFSANJANI	0	1	--	--	29	2	0	0
B	D AFRICAN WOMAN	28	6	1	0	7	15	0	0
B	E KIM II SUNG	68	49	18	5	21	16	4	0
NB	F BULL FIGHTER	15	1	--	--	58	15	3	0
NB	G WOMAN/CHILD	1	0	--	--	61	33	1	0
NB	H DANCER	1	0	1	0	40	18	0	0
NB	I BUSINESS WOMAN	28	26	28	39	27	32	0	0
NB	J ELECTRIFIED CHILD	18	19	52	26	17	1	14	4

- NOTES:** (1) B = BEACON PERSON USED; NB = NO BEACON PERSON
 (2) a = CONCEPT/GENERIC; b = SPECIFICS/ANALYTIC
 (3) C = CONTROL PERSON

~~SECRET~~/NOFORN/LIMDIS

~~SECRET~~

TABLE 2

RATING DATA SUMMARY, CTD.

TARGET TYPE (1)	TARGET I.D.	AVERAGE RATING (2)							
		V. No.1		V. No.2		V. No.3		C (3)	
		a	b	a	b	a	b	a	b
NB	K YOUTH	0	0	7	0	39	29	5	0
NB	L SCUBA DIVER	39	3	16	0	17	0	1	0
B	M BOOT VENDOR	36	25	33	16	45	28	20	5
B	N WEAVER	51	40	--	--	13	0	10	1
B	O COOK	35	3	16	6	48	8	32	9
B	P MAN IN CHAIR	15	5	12	1	6	1	15	8
NB	Q FACTORY WORKER	10	0	27	13	19	12	1	0
NB	R EXERCISE CLASS	39	3	4	6	11	3	0	0
NB	S CARRIAGE RIDER	1	0	55	47	33	31	0	0
B	T JOGGER	0	0	--	--	8	0	0	0

- NOTES:** (1) B = BEACON PERSON USED; NB = NO BEACON PERSON
 (2) a = CONCEPT/GENERIC; b = SPECIFICS/ANALYTIC
 (3) C = CONTROL PERSON

~~SECRET/NOFORN/LIMDIS~~

TABLE 3

I N D I V I D U A L A V E R A G E S

VIEWER (V) No.	No. OF TARGET TYPES		AVERAGES PER TARGETING TYPE			
	B	NB	BEACON (B)		NO BEACON (NB)	
			a	b	a	b
1	9	11	28	17	20	7
2	6	9	10	4	17	12
3	9	11	20	8	31	17
AVERAGE (ALL VR'S)	--	--	19	10	23	12
CONTROL (C)	9	11	11	4	4	1

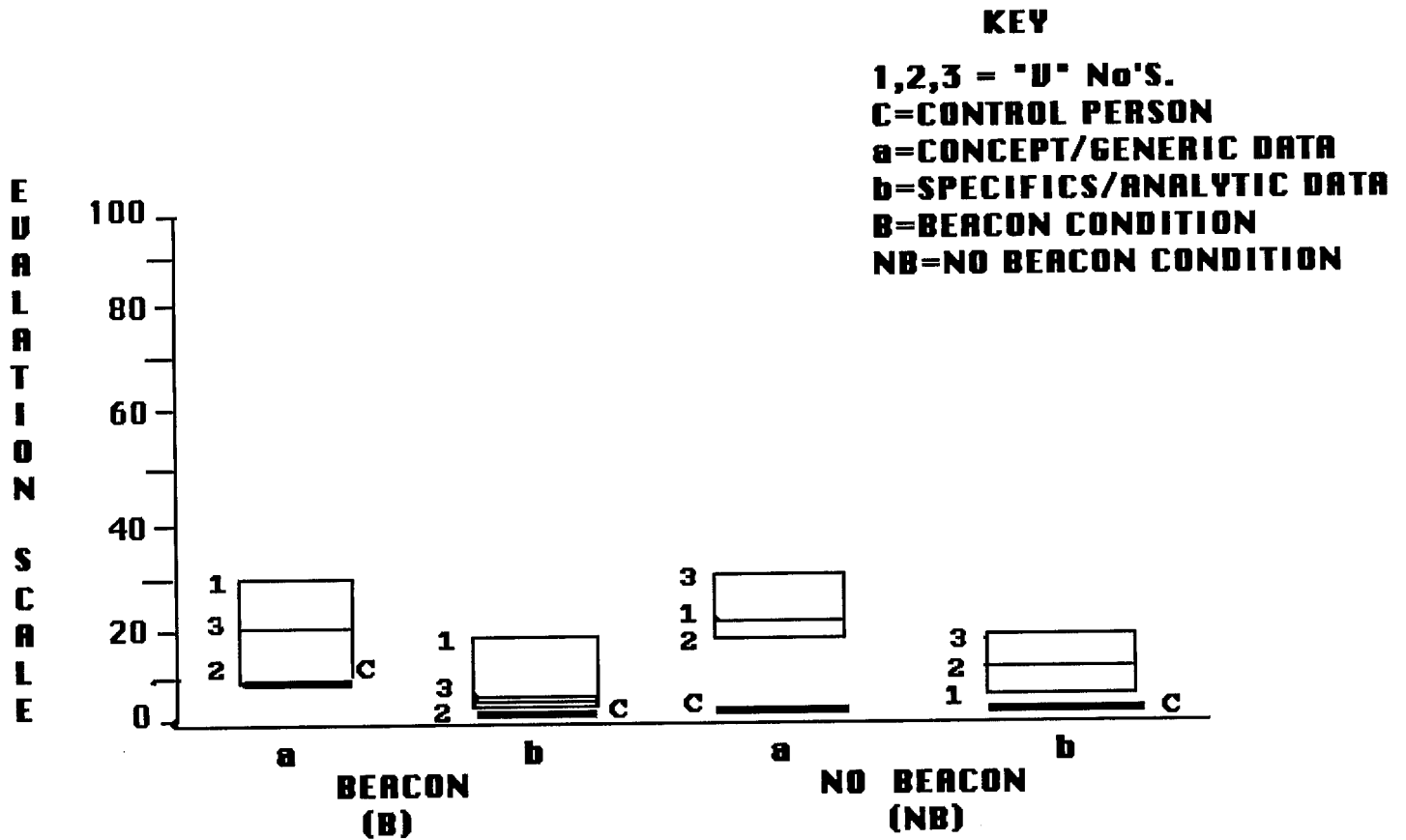
NOTES: B = BEACON
 NB = NO BEACON
 a = CONCEPT/GENERIC DATA
 b = SPECIFICS/ANALYTIC DATA

~~SECRET~~/NOFORN/LIMDIS
 STAR GATE

~~SECRET~~

FIGURE 3

**INDIVIDUAL AVERAGES
ALL TARGETS**



~~SECRET~~ NOFORN/LIMDIS
STAR GATE

~~SECRET~~

(S/NF/SG/LIMDIS) One of the reasons the average scores for this series are lower than for previous proficiency projects may be due to the key data elements selected. There were fewer overall elements, and some of them resulted in a hit or miss (e.g., male or female). Some targets were hard to differentiate (even when examined closely) between male/female. A miss on this category would have led to a significant lowering of overall scores, especially if any one or two elements were identified as key features for evaluation purposes. The low scores in the analytical (b) category indicates the viewers had difficulty in determining specific features and activity. This may reflect more on the difficulty of this target-set, and not on basic phenomena limitations for applied projects. This issue will be explored in future proficiency/application projects.

(S/NF/SG/LIMDIS) In summary, general observations from this series are:

- Reliability of conceptual/generic data is consistently better than specific analytic data.
- Overall, the viewers did considerably better than the control person for the concept/generic data category.
- The viewers also did better (though not as pronounced on the average) than the control person for the specific/analytic data category.
- Best results were obtained for clear and distinct targets, and those with implied dynamic content.
- A differential between beacon person and no-beacon person conditions could not be identified in this series.
- Use of a control person provides an important reference point for making comparisons between pure guessing and remote viewing activity. In this series, this comparison provided additional confidence in the possibility that remote viewing actually occurred.

~~SECRET~~/NOFORN/LIMDIS
STAR GATE

~~SECRET~~

V (U) FUTURE PROFICIENCY ACTIVITIES:

(S/NF/SG/LIMDIS) Results of this proficiency series indicate that proficiency projects intended primarily for skills development can also serve an additional important role. With proper design and execution, they can provide insight into issues that are important in potential applications. The possible influence of a known beacon person on data accuracy, or the effects of target characteristics on data quality, for example, would be important issues to resolve.

(S/NF/SG/LIMDIS) Consequently, future proficiency projects for DTI-S personnel will be designed to identify factors that influence an individual's performance. In addition, an accumulation of the variety of proficiency projects over time will provide a track record useful for person-to-project matching and in quantifying an individual's expected success rate. Such data will assist in how future operational projects are conducted and in predicting what aspects of a viewer's data are more reliable than others.

(S/NF/SG/LIMDIS) As a result of experience gained in this proficiency series, some procedural aspects were identified that can be improved. More care will be taken in selection of the key elements in the two data categories (concept/generic; specifics/analytic). In addition, the viewers may need to perform additional sessions for each target in order to identify as many key target elements as possible. This additional data could lead to improved overall ratings. An alternative to this approach is to limit the possible data elements to only the most significant items, as would be the case for most operational needs. These possibilities, and others, will be explored. An accumulation of data from similar projects over time will greatly assist in improving phenomena understanding and in determining application parameters.

(S/NF/SG/LIMDIS) Overall benefits were gained from this proficiency "B" series. The viewers were challenged with a wide variety of targets (some difficult). Possible influence of select parameters/conditions on remote viewing results were also explored. An accumulation of data from similar projects over time will greatly assist in improving phenomena understanding and in determining application parameters.

~~SECRET~~/NOFORN/LIMDIS
STAR GATE

A P P E N D I X

TAB

CPYRGHT



A-1

CONCEPTUAL ELEMENTS

ELEMENT	VALUE
1. Uniformed Oriental Male	1
2. Face-on/Hat/Dark Glasses	1
3. Signs/Hand-signal	1

ANALYTICAL ELEMENTS

ELEMENTS	VALUE
1. Young Korean	1
2. Policeman/Traffic Control	1

SESSION INFORMATION

- A. TARGET DATA:
 Task/Target No. : 92-108-P
 Session No. : 01
- B. PERSONAL DATA:
 Source No. : 025
 Monitor's No. : N/A
 Beacon/Sender No. : N/A
- C. SESSION DATA:
 Date Task Received : 5 Oct 92
 Session Date : 5 Oct 92
 Start Time : 1:00
 Stop Time : 2:00
 Method Used : ERV
 Aids/Distractions (PIs) : N/A
 Pre-session Hunches (AVs) : N/A
 Date Summary Returned : 5 Oct 92
- D. EVALUATION DATA:
 Viewer's Estimate : N/A
 Evaluator's Estimate : N/A
- E. SESSION SUMMARY

The target personality is a foreign male with dark hair who is somewhat heavy, not too tall, and is possibly sporting a beard. This individual speaks with an accent and deals with issues regarding many people on delicate matters. This individual may have been formerly military or politically involved in the past, but is not now. His hands are important in his work. What he does or creates with his hands is of interest. He gives of himself through his creation to other people and can influence many people at any given moment (all at once), even at a state level. He has a dramatic or theatrical personality, but is of a serious nature. This man is an artistic inventor of sorts who affects large numbers of people at a given time through his actions. Some consider what this individual does, is for show. However, he is methodical in his approach and his actions are thought out carefully. He puts something together to create an affect which is for the sake of meaning or significance. In other words, there is a moral to his story.

SESSION INFORMATION

- A. TARGET DATA:
Task/Target No. : 92-108-P
Session No. : 01
- B. PERSONNEL DATA:
Source No. : 049
Monitor's No. : NA
Beacon/Sender No. : NA
- C. SESSION DATA:
Date Task Received : 5 OCT 92
Session Date : "
Start Time : 1434
Stop Time : 1545
Method Used : ERV
Aids/Distractions (PIs) : Sinus/cold; not feeling well
Pre-session Hunches (AVs) : None
Date Summary Returned : 5 OCT 92
- D. EVALUATION DATA:
Viewer's Estimate : Extremely low
Evaluator's Estimate :
- E. SESSION SUMMARY:

The target is an elderly woman. She is involved with some sort of health situations. She has had advanced training in her discipline and is considered by some to be a "foremost" expert. Other individuals consider her to be a charlatan of sorts. She is an American yet it feels as if she is not of America.

She is well known to large numbers of people via the media i.e. radio, TV or books. She has traveled extensively, especially throughout northern Europe or Scandinavia; her background may, in fact, be from this region of the world.

She travels by boat more often than by plane and has an "old world" flavor about her. She is generally in good humor and is very concerned with those that she helps; almost a physician/patient relationship.

SESSION INFORMATION

- A. TARGET DATA:
Date: 5 Oct 92
Task/Target Number: 92100P
Session Number: 1
- B. PERSONNEL DATA:
Source Number: 079
Monitor Number: _____
- C. SESSION DATA:
Session Start Time: 1400
Session Stop Time: 1500
Method Used: Solo
Distractions/Hunches: _____
- D. EVALUATION DATA:
Viewer Confidence (H/M/L): _____
Evaluator's Estimate: _____
- E. SESSION SUMMARY:

The individual is a man. He is in a wide open spacious area. The individual may be near water. The individual is wearing brown clothes. His head is covered. The individual is victorious. The individual seems serious. The individual may travel for his job. The feeling is that he is a political leader. The individual may also be linked to the military. He seems to be a good man with many issues on his mind.

C O N T R O L P E R S O N I N P U T

Control Person No. 101 Date Task Initiated _____

Date of Input _____ Suspense Date _____

Task/Target No. 92-108-P-NB

Control Person Guess:

This target is a man, a very powerful man in a position to rule a country. This person is in this late fifties or early sixties. He has a slender build. The man is in a room filled with many people-- not all are supporters of this individual. He has dark hair with gray at the temples. The target is accompanied by his wife. He is giving a speech but does not have total control.

TARGET

A

EVALUATION RECORDS
PROFICIENCY PROJECTS

SOURCE	EVALUATION CATEGORIES (For Key elements)	PROFICIENCY COORDINATOR (DTI-S)	ANALYSIS SPECIALIST (DTI-S)	OUTSIDE REVIEWER (DTI-5B)	AVERAGE RATING
025	a. Concept/ Generic	45%	70%	67%	60
	b. Specifics/ Analytic	20%	20%	20%	20
049	a. Concept/ Generic	2%	0%	0%	.6
	b. Specifics/ Analytic	1%	0%	0%	.3
079	a. Concept/ Generic	15%	30%	20%	21
	b. Specifics/ Analytic	10%	20%	25%	18
	a. Concept/ Generic				
	b. Specifics/ Analytic				
	a. Concept/ Generic				
	b. Specifics/ Analytic				
CONTROL	a. Concept/ Generic				
	b. Specifics/ Analytic				
CONTROL 101	a. Concept/ Generic	10%	20%	33%	21
	b. Specifics/ Analytic	10%	0%	13%	7

TAB



CONCEPTUAL ELEMENTS

ELEMENT	VALUE
1. White-Haired Female in Black Coat, Hood	1
2. Face-on/Smiling/Holding Stick	1
3. Primitive Sense/Setting	.5

ANALYTICAL ELEMENTS

ELEMENTS	VALUE
1. Very Old/Lower Class	1
2. Pilgrim/Peasant	1
3. Stone Wall/People in Background	.5

SESSION INFORMATION

- A. TARGET DATA:
 Task/Target No. :92-109-P
 Session No. :01
- B. PERSONAL DATA:
 Source No. :025
 Monitor's No. :N/A
 Beacon/Sender No. :N/A
- C. SESSION DATA:
 Date Task Received :6 Oct 92
 Session Date :6 Oct 92
 Start Time :12:00
 Stop Time :1:00
 Method Used :ERV
 Aids/Distractions (PIs) :
 Pre-session Hunches (AVs) :
 Date Summary Returned :6 Oct 92
- D. EVALUATION DATA:
 Viewer's Estimate :N/A
 Evaluator's Estimate :
- E. SESSION SUMMARY

The target personality is religious and in nature. He is a man of the cloth and wears robes. He is a spiritual person who is associated with an old religious structure or church, possibly stone. The color white is predominant with this individual as are rays and beams of light. He is of spiritual significance and is reminiscent of a saint. The structure he is associated with has high archways, religious symbols and figurines. It is in a natural green setting which is high, possibly a mountainous region, and looks over water far below. while doing this site, I felt like I was flying. The personality target as I viewed him, is an active religious spirit.

SESSION INFORMATION

A. TARGET DATA:

Task/Target No. : 92-109-P
 Session No. : 01

B. PERSONNEL DATA:

Source No. : 049
 Monitor's No. : NA
 Beacon/Sender No. : NA

C. SESSION DATA:

Date Task Received : 13 OCT 92
 Session Date : "
 Start Time : 1523
 Stop Time : 1557
 Method Used : CRV
 Aids/Distractions (PIs) : Sinus infection; heat in bldg.
 Pre-session Hunches (AVs) : View of the Milky Way above me.
 Date Summary Returned : 13 OCT 92

D. EVALUATION DATA:

Viewer's Estimate :
 Evaluator's Estimate :

E. SESSION SUMMARY:

The target is/was involved with the earth's crust in some fashion. There is an old smell, a smell of decay that is natural and organic and a sharp, stinging smell. There is evidence of water (ie erosion) but water may not be present now. There is an "oldness", "ancient" and "primitiveness" associated with the target. It is a male whose work is/was related to dirt/soil and something buried. The man has a stubby beard and looks like Charleton Heston with a beard. There are waterfalls nearby. The target is flashy, flamboyant, has an association with alcohol and always appears bored in public. His appearance is reminiscent of an intellectual, a learned professor type; eccentric and considered one of the "old boys" in his discipline of study.

He is associated with hard bones (skeletons or bones which are very hard reminiscent of fossils), tools and something reburied. This individual spent a great deal of his working time outdoors in a sandy/rocky area which is inhospitable (savannah-like features). He leads a group of people when he is working. There is the concept of digging or excavating for something as well as collecting objects. The work has to do with the ground; reminiscent of geology. All of the hardships of the work and surrounding environment made it that much more enjoyable for this individual. There are wrapped boxes and objects which are displayed elsewhere. The over all concept of "hard fossils" is apparent. The phonetics "LANTIL, LANIL and LIANIL" where perceived.

SESSION INFORMATION

- A. TARGET DATA:
Date: 6 Oct 92
Task/Target Number: 92109P
Session Number: _____
- B. PERSONNEL DATA:
Source Number: 079
Monitor Number: _____
- C. SESSION DATA:
Session Start Time: 1300
Session Stop Time: 1400
Method Used: Sulu
Distractions/Hunches: _____
- D. EVALUATION DATA:
Viewer Confidence (H/M/L): _____
Evaluator's Estimate: _____
- E. SESSION SUMMARY:

Target personality appears to be a man. The individual seems to be involved in some type of activity. There is a feeling of motion or movement at the site. The colors blue and purple seem predominant but there is also a very dark black color. There is a circular object at the site.

The individual seems to be bending downwards and at time he looks as though he is riding something. The individual may have to wear special clothes. There is a feeling that the individual is protected.

The individual may be wearing "gloves" or something over his hands.

C O N T R O L P E R S O N I N P U T

Control Person No. 101 Date Task Initiated _____
Date of Input _____ Suspense Date _____
Task/Target No. 92-109-P-BK

Control Person Guess:

The target is a man but not an American. He is older, probably in his sixties, not overly tall for a man about 5'6". He has lots of white hair. He must be an famous author because he is sitting at a table that is piled high with books that he is autographing. There are many people in this room watching him.

EVALUATION RECORDS
PROFICIENCY PROJECTS

SOURCE	EVALUATION CATEGORIES (For Key elements)	PROFICIENCY COORDINATOR (DTI-S)	ANALYSIS SPECIALIST (DTI-S)	OUTSIDE REVIEWER (DTI-5B)	AVERAGE RATING
025	a. Concept/ Generic	20%	25%	12%	19
	b. Specifics/ Analytic	10%	25%	36%	23
049	a. Concept/ Generic	5%	20%	16%	13
	b. Specifics/ Analytic	0%	0%	4%	4
079	a. Concept/ Generic	5%	5%	4%	4
	b. Specifics/ Analytic	0%	5%	0%	4
	a. Concept/ Generic				
	b. Specifics/ Analytic				
	a. Concept/ Generic				
	b. Specifics/ Analytic				
CONTROL	a. Concept/ Generic				
	b. Specifics/ Analytic				
CONTROL 101	a. Concept/ Generic	12%	20%	13%	15
	b. Specifics/ Analytic	10%	0%	30%	13

TAB

CPYRGHT



CONCEPTUAL ELEMENTS

ELEMENT	VALUE
1. Dark-Clothed Male	1
2. White Head Cover/Looking to left/Somber	1
3. Indoor Setting	.5

ANALYTICAL ELEMENTS

ELEMENTS	VALUE
1. Cap/Turban/Robe	.5
2. Political Leader/Middle Aged	1
3. Middle East/Iranian/Rafsanjani	1
4. Stage/Lecture Hall	.5

SESSION INFORMATION

- A. TARGET DATA:
Task/Target No. :92-112-P
Session No. :01
- B. PERSONAL DATA:
Source No. :025
Monitor's No. :N/A
Beacon/Sender No. :N/A
- C. SESSION DATA:
Date Task Received :15 Oct 92
Session Date :15 Oct 92
Start Time :2:00
Stop Time :3:00
Method Used :ERV
Aids/Distractions (PIs) :N/A
Pre-session Hunches (AVs) :N/A
Date Summary Returned :15 Oct 92
- D. EVALUATION DATA:
Viewer's Estimate :N/A
Evaluator's Estimate :N/A
- E. SESSION SUMMARY

Looking through a window from a structure, the site appears sunny with a tree. It is a land, water interface with a beach area. A young woman and a little girl in pig tails are in summer clothes or bathing suits. This is a playful place where people go for enjoyment, perhaps for surfing, fishing, or picnicking. The site can become quite hot and large fish can be found at the target area. The girl is playing in the sunshine by the water. This is place which harbors life and weathers storms.

SESSION INFORMATION

- A. TARGET DATA:
Date: 15 oct 92
Task/Target Number: 92112P
Session Number: 01
- B. PERSONNEL DATA:
Source Number: 079
Monitor Number: _____
- C. SESSION DATA:
Session Start Time: 1400
Session Stop Time: 1500
Method Used: S/L
Distractions/Hunches: _____
- D. EVALUATION DATA:
Viewer Confidence (H/M/L): _____
Evaluator's Estimate: _____
- E. SESSION SUMMARY:

me The target personality has long dark hair. The individual may be wearing some type of ornament in his/her hair. The individual may be a man. The individual seemed to be sitting down. I could see a side profile of the individual. The individual is wearing light weight clothing. Colors that the individual may be wearing ~~is~~ red and gray. The individual seemed to be "riding fast?". Animals are somehow associated with the individual or with the site.

C O N T R O L P E R S O N I N P U T

Control Person No. 101 Date Task Initiated _____
Date of Input _____ Suspense Date _____
Task/Target No. 92-112-P

Control Person Guess:

There is the color green in this picture. The setting is outdoors, an area with lots of trees, and the sun is shining. This must be a busy park where folks go when they are trying to forget the life in the big city. The target is an older woman maybe in her sixties and she is walking among the trees with a smile on her face. You get the feeling of peace and tranquility.

EVALUATION RECORDS
PROFICIENCY PROJECTS

SOURCE	EVALUATION CATEGORIES (For Key elements)	PROFICIENCY COORDINATOR (DTI-S)	ANALYSIS SPECIALIST (DTI-S)	OUTSIDE REVIEWER ()	AVERAGE RATING
025	a. Concept/ Generic	0%	0%	0%	0
	----- b. Specifics/ Analytic	0%	0%	3%	1
049	a. Concept/ Generic	-----	-----	-----	-----
	----- b. Specifics/ Analytic	-----	-----	-----	-----
079	a. Concept/ Generic	25%	35%	28%	29
	----- b. Specifics/ Analytic	0%	0%	8%	2
	a. Concept/ Generic	-----	-----	-----	-----
	----- b. Specifics/ Analytic	-----	-----	-----	-----
	a. Concept/ Generic	-----	-----	-----	-----
	----- b. Specifics/ Analytic	-----	-----	-----	-----
CONTROL	a. Concept/ Generic	-----	-----	-----	-----
	----- b. Specifics/ Analytic	-----	-----	-----	-----
CONTROL 101	a. Concept/ Generic	0%	0%	0%	0
	----- b. Specifics/ Analytic	0%	0%	0%	0

TAB

CPYRGHT



EARMARKS OF WEALTH among the Fulanis, giant gold ornaments festoon a woman at Dialloubé; a head strap often helps support the heavy earrings. As a family's fortunes increase, more gold may be hammered onto the jewelry. Glistening filigree—an art form along the Niger—harks back to an age when West African monarchs cornered the bulk of the continent's known gold supply. One 11th-century Ghanaian king reportedly possessed a nugget so large that he tethered his horse to it.

CONCEPTUAL ELEMENTS

ELEMENT	VALUE
1. Well-Dressed Black Female/Standing	1
2. Ornamental/Large Golden Objects	1
3. Primitive/Tribal Setting	.5

ANALYTICAL ELEMENTS

ELEMENTS	VALUE
1. Young African	1
2. Necklace/Nose Ring/Gold Earrings/Turban	1

SESSION INFORMATION

- A. TARGET DATA:
 Task/Target No. :92-113-P
 Session No. :01

- B. PERSONAL DATA:
 Source No. :025
 Monitor's No. :N/A
 Beacon/Sender No. :N/A

- C. SESSION DATA:
 Date Task Received :16 Oct 92
 Session Date :16 Oct 92
 Start Time :2:00
 Stop Time :3:00
 Method Used :ERV
 Aids/Distractions (PIs) :N/A
 Pre-session Hunches (AVs) :N/A
 Date Summary Returned :N/A

- D. EVALUATION DATA:
 Viewer's Estimate :N/A
 Evaluator's Estimate :N/A

- E. SESSION SUMMARY

The target personality is cast and is associated with the letter T. This individual is quick minded and of a serious nature. He has a record/history and is a man of position. Sound elements are relative to include: metal, mechanical, and technical items. Bright lights, something golden, and the color yellow are associated with the target personality. This man is into active healings and possibly stardom. His personality is such that he can be an actor of sorts in front of people. However, he prefers to keep to himself, is technically inclined, and stands alone. He attempts to save people and is actively involved with healings. It is difficult to determine if the problem he struggles with is an act of war or an act of God. He does something to aid hurt people and his work is currently important. This man is associated with Gauss.

SESSION INFORMATION

- A. TARGET DATA:
Task/Target No. : 92-113-P
Session No. : 01
- B. PERSONNEL DATA:
Source No. : 049
Monitor's No. : NA
Beacon/Sender No. : NA
- C. SESSION DATA:
Date Task Received : 16 OCT 92
Session Date : "
Start Time : 1434
Stop Time : 1504
Method Used : CRV/ERV
Aids/Distractions (PIs) : Sinuses are killing me!!!!!!
Pre-session Hunches (AVs) : None
Date Summary Returned : 16 OCT 92
- D. EVALUATION DATA:
Viewer's Estimate :
Evaluator's Estimate :
- E. SESSION SUMMARY:

A metal support system of some sorts; black and white basketball shoes; wooden boards. Nothing of substance.

No results!

079

92-113-P

Solo

16 Oct 92

The individual comes across as being youthful. The individual's hands and arms are pointing upward or outward. The individual may be sitting on something. The individual was viewed "sideways" or from a side profile. The individual was serious. The individual was in a natural environment.

Action/motion/movement was sensed with the individual. Growth also seems to be expressed in this target.

The individual can be described as a "helper" or a "communicator."

There are dreams, creativity, and illusions associated with the target personality.

Blue
Red white } colors.
~~Red~~

C O N T R O L P E R S O N I N P U T

Control Person No. 101 Date Task Initiated _____
Date of Input _____ Suspense Date _____
Task/Target No. 92-113-P

Control Person Guess:

It feels very cold. The whole area is surrounded by ice and snow. There is a man in this picture. You get the feeling that this man is very use to this cold weather condition. The man is dressed in heavy clothing made out of some kind of animal skin. The man looks happy and content.

EVALUATION RECORDS
PROFICIENCY PROJECTS

SOURCE	EVALUATION CATEGORIES (For Key elements)	PROFICIENCY COORDINATOR (DTI-S)	ANALYSIS SPECIALIST (DTI-S)	OUTSIDE REVIEWER ()	AVERAGE RATING
025	a. Concept/ Generic	10%	30%	44%	28
	----- b. Specifics/ Analytic	0%	0%	10%	6
049	a. Concept/ Generic	0%	0%	4%	1
	----- b. Specifics/ Analytic	0%	0%	0%	0
079	a. Concept/ Generic	5%	10%	8%	7
	----- b. Specifics/ Analytic	0%	10%	25%	15
	a. Concept/ Generic				
	----- b. Specifics/ Analytic				
	a. Concept/ Generic				
	----- b. Specifics/ Analytic				
CONTROL	a. Concept/ Generic				
	----- b. Specifics/ Analytic				
CONTROL 101	a. Concept/ Generic	0%	0%	0%	0
	----- b. Specifics/ Analytic	0%	0%	0%	0

TAB

CPYRGHT



North Korea's Kim Il Sung points the way

NORTH KOREA

Coming In from The Cold

When the going gets tough, the tough . . . well, go along. After denouncing the United Nations for decades, North Korea's xenophobic Communist government announced last week that it would apply for full membership in the organiza-

tion—right behind South Korea. "As the South Korean authorities insist on their unilateral U.N. membership," the North Korean Foreign Ministry declared indignantly, "if we leave this alone, important issues related to the interest of the entire Korean nation will be dealt with in a biased manner on the U.N. rostrum."

Pyongyang's decision to join the U.N. is a glaring admission

that its isolationist policy has been checkmated by Seoul's smooth cultivation of North Korea's main patrons, Moscow and Beijing. Anxious to extend burgeoning economic ties with capitalist—and prosperous—South Korea, neither the Soviet Union nor China is eager to oppose South Korea's application for U.N. membership, leaving North Korea little choice but to seek a seat as well. ■

CONCEPTUAL ELEMENTS

ELEMENT	VALUE
1. Oriental Dark-Haired man/Dark Clothes	1
2. Standing High/Half-Smile/Arms Extended	1
3. Flags/Signs/People in Foreground and Background	.5

ANALYTICAL ELEMENTS

ELEMENTS	VALUE
1. Political Leader/Middle Aged	1
2. North Korean/Kim II Sung	1

SESSION INFORMATION

- A. TARGET DATA:
 Task/Target No. :92-114-P
 Session No. :01
- B. PERSONAL DATA:
 Source No. :025
 Monitor's No. :N/A
 Beacon/Sender No. :
- C. SESSION DATA:
 Date Task Received :92-114-P
 Session Date :20 Oct 92
 Start Time :1:00
 Stop Time :2:00
 Method Used :ERV
 Aids/Distractions (PIs) :N/A
 Pre-session Hunches (AVs) :N/A
 Date Summary Returned :20 Oct 92
- D. EVALUATION DATA:
 Viewer's Estimate :N/A
 Evaluator's Estimate :N/A
- E. SESSION SUMMARY

The target personality is a writer and a patriot. He is comical with political overtones. An individual is portrayed in a dramatic form or expression. Animated smiles or a caricature in its entirety is shown. A flag and or stripes may be in the background. Many people view this individual or his work at once. Images of him as a boy can be found. I feel this may be the result of someone's line of work which is almost satirical in its humor.

SESSION INFORMATION

A. TARGET DATA:

Task/Target No. : 92-114-P
Session No. : 01

B. PERSONNEL DATA:

Source No. : 049
Monitor's No. : NA
Beacon/Sender No. : M.S.

C. SESSION DATA:

Date Task Received : 20 OCT 92
Session Date : "
Start Time : 1059
Stop Time : 1120
Method Used : CRV
Aids/Distractions (PIs) : Sinus infection; smells like
something died in the CRV room.
Pre-session Hunches (AVs) : None
Date Summary Returned : 20 OCT 92

D. EVALUATION DATA:

Viewer's Estimate :
Evaluator's Estimate :

E. SESSION SUMMARY:

The target is a woman with darker hair and younger than middle age. She is somehow associated with the sense of motion, of being suspended above a pointed object and of flying. She is associated with water, but the feeling is more with rain or mist rather than a body of water. There are clouds and high altitude associated with her. An object is silvery and smooth and feels "futuristic". It has triangular points on it. Again, a sense of flying.

The woman is sitting, staring at a 3-sided panel. This panel illuminates her face. There is again the sense of suspension; of isolation; of being alone. There are curved features associated with her head.

There is a rhythmic sound; a throbbing, a spinning motion and a sense of continual adjustment. The time feels ca. 1930's. Everything in the scene is in shades of gray; as if I were looking at a B/W photograph; an old photograph. There are people whispering in the background. They are voicing doubt and anxiety about the woman. The woman seems "doomed to failure".

SESSION INFORMATION

- A. TARGET DATA:
Date: 30 Oct 92
Task/Target Number: 92114 P
Session Number: 01
- B. PERSONNEL DATA:
Source Number: 079
Monitor Number: —
- C. SESSION DATA:
Session Start Time: 1200
Session Stop Time: 1300
Method Used: Sds
Distractions/Hunches: —
- D. EVALUATION DATA:
Viewer Confidence (H/M/L): —
Evaluator's Estimate: —
- E. SESSION SUMMARY:

Individual is standing in front of a wide circular spacious area. Blue and white are the colors associated with the site or individual. Individual has light hair and is medium aged. Water is at the site and is behind the individual. Individual is not smiling. The individual is looking at something and seems serious. There may be some type of action/movement associated at the site or with the individual.

C O N T R O L P E R S O N I N P U T

Control Person No. 313 Date Task Initiated _____
Date of Input _____ Suspense Date _____
Task/Target No. 92-114-P-BK

Control Person Guess:

- Target person appeared to be thin, tall, probably a man.. dark-set large eyes, thin face (face-on view)
 - May be associated with an outdoor activity, such as construction, possibly in a harbor or wharf area.
 - Odd hat on...like a rain hat or construction hat.
 - Setting is dark.. Possibly night or dimly lit.
 - Sense of clandestine, illegal
 - Slight sense of an underwater aspect...a sunken boat?
- A man involved in night-time construction
 - at a wharf, or mine area

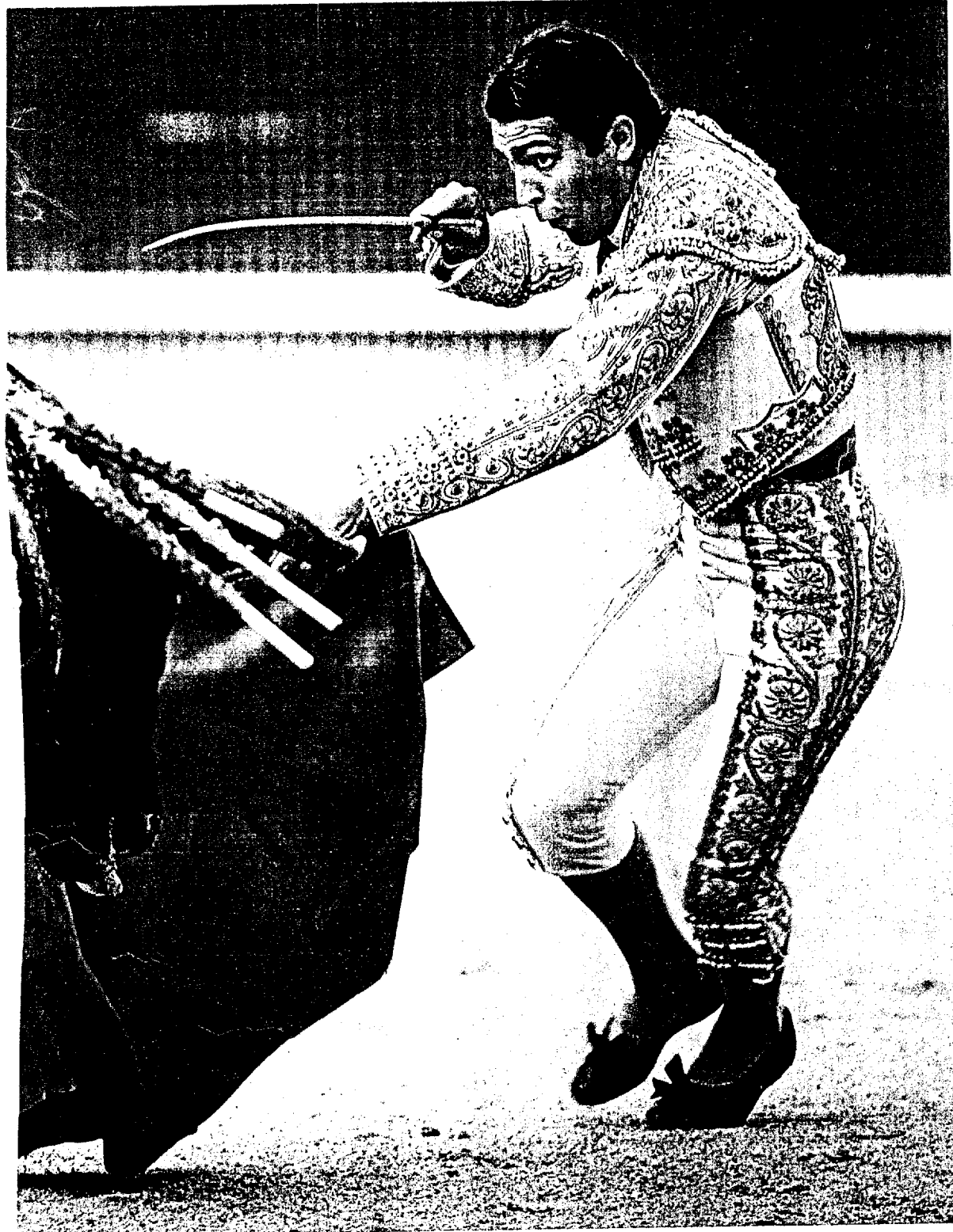
TARGET

E

EVALUATION RECORDS
PROFICIENCY PROJECTS

SOURCE	EVALUATION CATEGORIES (For Key elements)	PROFICIENCY COORDINATOR (DTI-S)	ANALYSIS SPECIALIST (DTI-S)	OUTSIDE REVIEWER ()	AVERAGE RATING
025	a. Concept/ Generic	70%	75%	60%	68
	b. Specifics/ Analytic	60%	50%	38%	49
049	a. Concept/ Generic	5%	20%	30%	18
	b. Specifics/ Analytic	0%	0%	13%	5
079	a. Concept/ Generic	20%	25%	20%	21
	b. Specifics/ Analytic	10%	15%	25%	16
	a. Concept/ Generic				
	b. Specifics/ Analytic				
	a. Concept/ Generic				
	b. Specifics/ Analytic				
CONTROL 313	a. Concept/ Generic	1%	10%	2%	4
	b. Specifics/ Analytic	0%	0%	0%	0
CONTROL 101	a. Concept/ Generic				
	b. Specifics/ Analytic				

TAB



BOUND for greatness, José Cubero instead became the second Spanish matador to die in less than a year. Well known as Yiyo, he cut a splendid figure in his "suit of lights" (left, top) at a May 1985

contest in Madrid's Plaza de las Ventas (above). Three months later a tragic error would end the 21-year-old's spectacular career and intensify the national debate over bullfighting. After his final sword thrust

he turned to the crowd, thinking the bull slain. But the animal rallied and lunged, piercing Yiyo through the heart (left, bottom). Before collapsing, he told a friend, Pali, that he knew it was the end.

CONCEPTUAL ELEMENTS

ELEMENT	VALUE
1. Dark Skinned, Dark Haired Man in White/Ornate Costume	1
2. Side View/Holding Sharp Object	1
3. Inside/Arena	.5

ANALYTICAL ELEMENTS

ELEMENTS	VALUE
1. Spanish Matador	1
2. Holding Knife/and Cape/Attacking Bull	1
3. Madrid Plaza	.5

SESSION INFORMATION

- A. TARGET DATA:
Task/Target No. :92-115-P
Session No. :01
- B. PERSONAL DATA:
Source No. :025
Monitor's No. :N/A
Beacon/Sender No. :
- C. SESSION DATA:
Date Task Received :21 Oct 92
Session Date :21 Oct 92
Start Time :1:00
Stop Time :2:00
Method Used :ERV
Aids/Distractions (PIs) :N/A
Pre-session Hunches (AVs) :N/A
Date Summary Returned :21 Oct 92
- D. EVALUATION DATA:
Viewer's Estimate :N/A
Evaluator's Estimate :
- E. SESSION SUMMARY

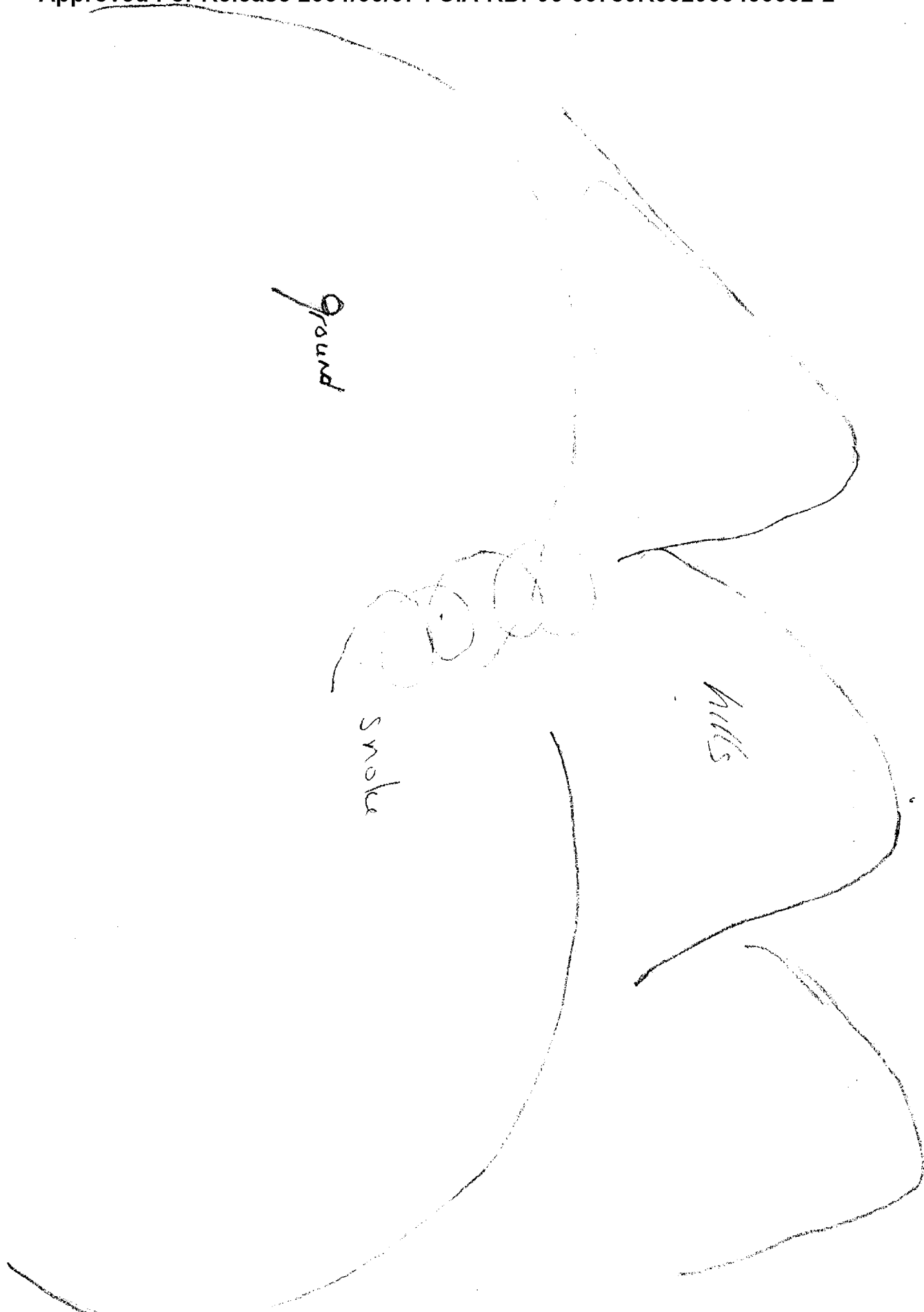
The target shows light and the color yellow. The individual is associated with an older multi-level structure. Femininity, eye lashes, and a sense of beauty are illustrated. A tree, indicating growth since a certain past time, is featured. There is a historical element present. I am under the impression that this is a place which is a land mark, wherein people visit and once lived. This site was constructed for the purpose of people. It is near water, and can stir up feelings in people. Something of value to people could be dug up at the site. The site may be associated with an old empire.

SESSION INFORMATION

- A. TARGET DATA:
Date: 21 Oct 92
Task/Target Number: 92 115 P
Session Number: 01
- B. PERSONNEL DATA:
Source Number: 079
Monitor Number: -
- C. SESSION DATA:
Session Start Time: ~~1500~~ 1430
Session Stop Time: 1500
Method Used: Su/a
Distractions/Hunches: _____
- D. EVALUATION DATA:
Viewer Confidence (H/M/L): _____
Evaluator's Estimate: _____
- E. SESSION SUMMARY:

At first I could see a big wide open spacious area with green hills and brown ground. This area was sparse. There was white smoke here. The individual was tall and slender and was wearing a big hat and may be wearing dark glasses. The individual was waving something in his hands. The individual was wearing elaborate clothes. Then I sensed that the individual was surrounded by a crowd. The individual seemed to be enjoying himself. At first, I got the impression that someone may be working and then I got the impression that one could enjoy themselves.

The individual could be
considered a "showman"



C O N T R O L P E R S O N I N P U T

Control Person No. 101 Date Task Initiated _____
Date of Input _____ Suspense Date _____
Task/Target No. 92-115-P-NB

Control Person Guess:

The target is middle age and appears to be a woman. The colors are very dark even though it seems to be daylight. The picture is outdoors and the setting looks like it could be in the country. The woman must be a very religious woman because of the long dark clothing she is wearing. She seems to be wearing some kind of head covering.

The woman could be from the Quaker or Amish group.

TARGET

F

EVALUATION RECORDS

PROFICIENCY PROJECTS

SOURCE	EVALUATION CATEGORIES (For Key elements)	PROFICIENCY COORDINATOR (DTI-S)	ANALYSIS SPECIALIST (DTI-S)	OUTSIDE REVIEWER ()	AVERAGE RATING
025	a. Concept/ Generic	10%	10%	26%	15
	b. Specifics/ Analytic	0%	0%	4%	1
049	a. Concept/ Generic				
	b. Specifics/ Analytic				
079	a. Concept/ Generic	45%	50%	80%	58
	b. Specifics/ Analytic	10%	5%	32%	15
	a. Concept/ Generic				
	b. Specifics/ Analytic				
	a. Concept/ Generic				
	b. Specifics/ Analytic				
CONTROL	a. Concept/ Generic				
	b. Specifics/ Analytic				
CONTROL 101	a. Concept/ Generic	5%	0%	4%	3
	b. Specifics/ Analytic	0%	0%	0%	0

TAB

CPYRGHT



CONCEPTUAL ELEMENTS

ELEMENT	VALUE
1. Dark-Skinned Female Holding Child	1
2. Face-on View/Black, White, Gray Garments	1

ANALYTICAL ELEMENTS

ELEMENTS	VALUE
1. Woman is Mid-Aged/Poor Class	1
2. Scarf/Blankets/Gown	1
3. Child is Sick/Starving	1
4. Somali/Hospital Setting	.5

SESSION INFORMATION

- A. TARGET DATA:
Task/Target No. :92-117-P
Session No. :01
- B. PERSONAL DATA:
Source No. :025
Monitor's No. :N/A
Beacon/Sender No. :N/A
- C. SESSION DATA:
Date Task Received :22 Oct 92
Session Date :22 Oct 92
Start Time :2:00
Stop Time :3:00
Method Used :ERV
Aids/Distractions (PIs) :N/A
Pre-session Hunches (AVs) :N/A
Date Summary Returned :22 Oct 92
- D. EVALUATION DATA:
Viewer's Estimate :N/A
Evaluator's Estimate :
- E. SESSION SUMMARY

The target personality is foreign, youthful, and thin with short dark hair. This individual may be military related and is somewhat regimented. The individual wears a standard style of clothing and has a modest style of living (non-luxurious). The target personality has been active and successful. Political issues are of concern. The target personality is a tradesman and a hard worker. This individual works with objects. *I associate the color green with this target.*

SESSION INFORMATION

- A. TARGET DATA:
Date: 22 Oct 92
Task/Target Number: 92 117 P
Session Number: 01
- B. PERSONNEL DATA:
Source Number: 079
Monitor Number: _____
- C. SESSION DATA:
Session Start Time: ~~1230~~ ~~1200~~ 1430
Session Stop Time: ~~1300~~ 1500
Method Used: Su/o
Distractions/Hunches: _____
- D. EVALUATION DATA:
Viewer Confidence (H/M/L): _____
Evaluator's Estimate: _____
- E. SESSION SUMMARY:

The individual was standing outside and looking somewhat sideways. The individual had long hair that seemed to be blowing in the wind. I think that the individual was a female. The individual had a pleasant look on her face. The individual looked like she was wearing light weight clothes and may have something small around her neck (necklace or scarf?). Water was behind the individual and there was a white "railing" off to her one side.

At other times during the session, it looked as though I was looking at square objects that looked like "boxes."

At one point during the session, it seemed like the individual had her hands wrapped around something.

Then at the end of the session, I saw a baby?

←
Square objects were man made

C O N T R O L P E R S O N I N P U T

Control Person No. 101 Date Task Initiated _____
Date of Input _____ Suspense Date _____
Task/Target No. 92-117-P -NB

--Control Person Guess:

The target is a male but not very old, maybe in his late teens or early twenties. His hair is very light and his skin very tan. He has a slender build but very athletic. I see water in this picture. There is a high structure that could be a diving board. I get the feeling that this could be a pool and there is a swimming event or exercise.

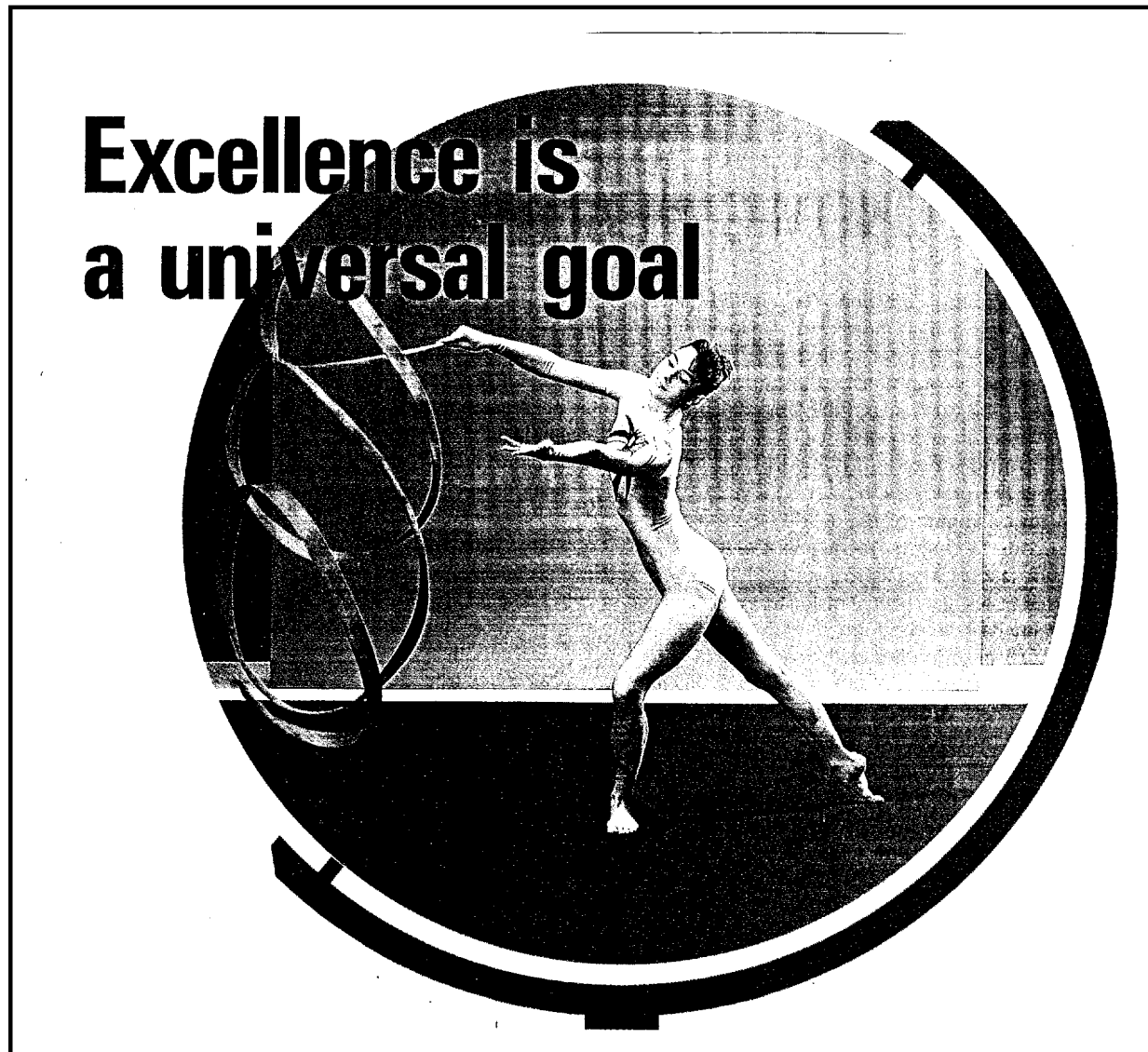
EVALUATION RECORDS

PROFICIENCY PROJECTS

SOURCE	EVALUATION CATEGORIES (For Key elements)	PROFICIENCY COORDINATOR (DTI-S)	ANALYSIS SPECIALIST (DTI-S)	OUTSIDE REVIEWER ()	AVERAGE RATING
025	a. Concept/ Generic	5%	0%	0%	1
	b. Specifics/ Analytic	0%	0%	0%	0
049	a. Concept/ Generic				
	b. Specifics/ Analytic				
079	a. Concept/ Generic	60%	70%	54%	61
	b. Specifics/ Analytic	30%	20%	49%	33
	a. Concept/ Generic				
	b. Specifics/ Analytic				
	a. Concept/ Generic				
	b. Specifics/ Analytic				
CONTROL	a. Concept/ Generic				
	b. Specifics/ Analytic				
CONTROL 101	a. Concept/ Generic	0%	0%	10%	1
	b. Specifics/ Analytic	0%	0%	0%	0

TAB

CPYRGHT



CONCEPTUAL ELEMENTS

ELEMENT	VALUE
1. Trim White Female/White Clothes	1
2. On Toes/Stretching/Holding/Twirling	1

ANALYTICAL ELEMENTS

ELEMENTS	VALUE
1. Young Dancer/Athlete	1
2. Blue Ribbon	.5
3. Excellence/Performance	.5

SESSION INFORMATION

- A. TARGET DATA:
 Task/Target No. :92-118-P
 Session No. :01
- B. PERSONAL DATA:
 Source No. :025
 Monitor's No. :N/A
 Beacon/Sender No. :N/A
- C. SESSION DATA:
 Date Task Received :23 Oct 92
 Session Date :23 Oct 92
 Start Time :2:00
 Stop Time :3:00
 Method Used :ERV
 Aids/Distractions (PIs) :N/A
 Pre-session Hunches (AVs) :N/A
 Date Summary Returned :23 Oct 92
- D. EVALUATION DATA:
 Viewer's Estimate :N/A
 Evaluator's Estimate :N/A
- E. SESSION SUMMARY

Light is shining through tall shadow forms. The target personality likes to eat alone, is positively patient, and is no longer young and very active. The individual likes a stable environment and may be somewhat isolated or lonely. The target personality has a spiritual/religious nature. The structure the individual is associated with is of prime importance in this person's life. This individual has wisdom and wishes to communicate messages to people.

SESSION INFORMATION

- A. TARGET DATA:
 Task/Target No. : 92-118-P
 Session No. : 01
- B. PERSONNEL DATA:
 Source No. : 049
 Monitor's No. : NA
 Beacon/Sender No. : NA
- C. SESSION DATA:
 Date Task Received : 23 OCT 92
 Session Date : "
 start Time : 1715
 stop Time : 1745
 Method Used : CRV
 Aids/Distractions (PIs) : Sinus infection/headache
 Pre-session Hunches (AVs) : None
 Date Summary Returned : 26 OCT 92
- D. EVALUATION DATA:
 Viewer's Estimate : Non-existent
 Evaluator's Estimate :
- E. SESSION SUMMARY:

The target is a male. He is in an area that is very dirty and dark. The air is hard to breathe and has a sharp, metallic "bite" to it when you breathe. There are large angular objects, tube-like features and portions of cylinders which surround him.

There is the concept of protective gear or clothing, like a hat or something that hangs on the front. There is steam or smoke rising up near him. This place can be very hazardous and this individual has been trained in a specific "over-seer" job or task.

There is a foreign aspect to this target. It is in a region where it is gray and a sense of gloominess pervades the area. There is a dirty yellow object moving back and forth behind the person. I also sense wetness or dampness close to the target; like pools or puddles of water.

SESSION INFORMATION

- A. TARGET DATA:
Date: 23 oct 92
Task/Target Number: 92 118 P
Session Number: 01
- B. PERSONNEL DATA:
Source Number: 079
Monitor Number: -
- C. SESSION DATA:
Session Start Time: 1300
Session Stop Time: 1400
Method Used: Su/u
Distractions/Hunches: _____
- D. EVALUATION DATA:
Viewer Confidence (H/M/L): _____
Evaluator's Estimate: _____
- E. SESSION SUMMARY:

The individual is a man that is holding an object in his hands. His arms are stretched out holding the object. Sometimes it looked as though he was holding the object over his head. Colors associated with the individual are red, brown, gold, and some green. The man has dark hair and he appeared somewhat youthful but mature. The man may be wearing a uniform and he could be a leader in politics or the military. He is victorious. The man's work puts him in a natural environment.

C O N T R O L P E R S O N I N P U T

Control Person No. 101 Date Task Initiated _____
Date of Input _____ Suspense Date _____
Task/Target No. 92-118-P-NB

Control Person Guess:

I see many people in this picture but they are in the background. The main target is a man, fairly tall and older. The setting looks to be some sort of meeting or spiritual gathering. The man must be a preacher and he is talking to the group. You get the feeling of a very emotional atmosphere.

EVALUATION RECORDS

PROFICIENCY PROJECTS

SOURCE	EVALUATION CATEGORIES (For Key elements)	PROFICIENCY COORDINATOR (DTI-S)	ANALYSIS SPECIALIST (DTI-S)	OUTSIDE REVIEWER ()	AVERAGE RATING
025	a. Concept/ Generic	5%	0%	0%	1
	b. Specifics/ Analytic	0%	0%	0%	0
049	a. Concept/ Generic	5%	0%	0%	1
	b. Specifics/ Analytic	0%	0%	0%	0
079	a. Concept/ Generic	40%	40%	40%	40
	b. Specifics/ Analytic	15%	20%	20%	18
	a. Concept/ Generic				
	b. Specifics/ Analytic				
	a. Concept/ Generic				
	b. Specifics/ Analytic				
CONTROL	a. Concept/ Generic				
	b. Specifics/ Analytic				
CONTROL 101	a. Concept/ Generic	0%	0%	0%	0
	b. Specifics/ Analytic	0%	0%	0%	0

TAB

CPYRGHT



Chamorro: a question of appearances

CONCEPTUAL ELEMENTS

ELEMENT	VALUE
1. White Female	1
2. Hand at Chin/Looking Left	1

ANALYTICAL ELEMENTS

ELEMENTS	VALUE
1. Middle Aged/Successful in Business	1
2. Emphasis on Appearances	.5

SESSION INFORMATION

- A. TARGET DATA:
 Task/Target No. : 92-119-P
 Session No. : 01
- B. PERSONAL DATA:
 Source No. : 025
 Monitor's No. : N/A
 Beacon/Sender No. : N/A
- C. SESSION DATA:
 Date Task Received : 26 Oct 92
 Session Date : 26 Oct 92
 Start Time : 2:00
 Stop Time : 3:00
 Method Used : ERV
 Aids/Distractions (PIs) : N/A
 Pre-session Hunches (AVs) : N/A
 Date Summary Returned : 26 October 92
- D. EVALUATION DATA:
 Viewer's Estimate : N/A
 Evaluator's Estimate : N/A
- E. SESSION SUMMARY

An active male is holding something in his hand. There are high points, and a golden yellow is exhibited. This individual has a successful future and a relationship to a female. He may be jumping around or climbing, in relation to a high area, and is in an airy environment. The emphasis is on his movement which is the activity at hand. Someone/something is being transported from one area to another. The target personality is a member of a team. His fingers are shown and he is signaling with them. A face is visible. The target personality is helpful, truthful, and a seeker. He is doing something for the public purview and is to be seen by people.

SESSION INFORMATION

- A. TARGET DATA:
Task/Target No. : 92-119-P
Session No. : 01
- B. PERSONNEL DATA:
Source No. : 049
Monitor's No. : NA
Beacon/Sender No. : NA
- C. SESSION DATA:
Date Task Received : 26 OCT 92
Session Date : "
Start Time : 1430
Stop Time : 1500
Method Used : ERV
Aids/Distractions (PIs) : Sinus headache, stuffy head...
Pre-session Hunches (AVs) : None
Date Summary Returned : 26 OCT 92
- D. EVALUATION DATA:
Viewer's Estimate :
Evaluator's Estimate :

E. SESSION SUMMARY:

The target is located within an older section of a city; reminiscent of an ethnic barrio or near inner city. The area is run down and old with boarded up or broken windows and store fronts. There is a store or market of some sort on a corner selling fruits and vegetables.

You can hear the noise from traffic that occurs in the near distance, up and to the right of the scene. The target individual is standing on or near a street corner. It feels as if this is a scene out of the Depression Era circa mid 1930's. Music and singing can be heard from a 2d floor window. It has the scratchy, tinny sound of music from that era.

I feel it is an eastern city. There is a lot of jumbled up objects nearby. These are reminiscent of pipes, barrels, pieces of angle iron and wooden debris piled up. Apples seem to be an important aspect of this target. The scene is in black and white and shades of gray. The background scenery gives one a feeling of desperation and despair but the individual themselves have an expression of calmness and peace. Gender is hard on this one; the person is middle-aged but appearance is older than actual age. It is really hard to tell if this person is a man or a woman. They "feel" like a woman but have the appearance of a man.

SESSION INFORMATION

- A. TARGET DATA: 26 oct 92
Date: _____
Task/Target Number: 92119 P
Session Number: 01
- B. PERSONNEL DATA:
Source Number: 079
Monitor Number: _____
- C. SESSION DATA:
Session Start Time: 1300
Session Stop Time: 1400
Method Used: Solo
Distractions/Hunches: _____
- D. EVALUATION DATA:
Viewer Confidence (H/M/L): _____
Evaluator's Estimate: _____
- E. SESSION SUMMARY:

The individual is standing or sitting in a very upright position and is holding object(s). The individual has dark hair and seems to be sitting in a position of judgement. Many colors are associated with the individual. Blue, red, brown, white, some green, and some purple were the colors sensed. The individual may wear an elaborate headcovering that has to do with his or her job. The objects that the individual is holding could be considered dangerous. One object was long and slender and pointed. The individual can be considered a fighter and a justice seeker. The individual is trying to maintain balance. The individual is trying to show wisdom.

C O N T R O L P E R S O N I N P U T

Control Person No. 101 Date Task Initiated _____

Date of Input _____ Suspense Date _____

Task/Target No. 92-119-P

Control Person Guess:

The target is a small child. This child is approximately 5 or 6 years of age. The setting is outdoors in the open country. It must be a very nice sunny day because everything is so bright. The child seems to be running through a field chasing something which could be a dog or maybe a rabbit. The child is a boy and has very light colored hair. There are several trees in the picture. The time of the year is summer because there are leaves on the trees and everything is green.

EVALUATION RECORDS

PROFICIENCY PROJECTS

SOURCE	EVALUATION CATEGORIES (For Key elements)	PROFICIENCY COORDINATOR (DTI-S)	ANALYSIS SPECIALIST (DTI-S)	OUTSIDE REVIEWER ()	AVERAGE RATING
025	a. Concept/ Generic -----	30%	30%	25%	28
	b. Specifics/ Analytic	25%	20%	33%	26
049	a. Concept/ Generic -----	25%	30%	30%	28
	b. Specifics/ Analytic	20%	30%	67%	39
079	a. Concept/ Generic -----	35%	25%	23%	27
	b. Specifics/ Analytic	20%	10%	66%	32
	a. Concept/ Generic -----				
	b. Specifics/ Analytic				
	a. Concept/ Generic -----				
	b. Specifics/ Analytic				
CONTROL	a. Concept/ Generic -----				
	b. Specifics/ Analytic				
CONTROL 101	a. Concept/ Generic -----	0%	0%	0%	0
	b. Specifics/ Analytic	0%	0%	0%	0

TAB

CPYRGHT



ROBERT W. MADDEN (BOTH PHOTOGRAPHS)

Visitor gets a charge from harmless static electricity at the Ontario Science Centre in Toronto. Ontario—only Canadian province on the Great Lakes—joins U. S. agencies in searching for solutions to lake problems.

CONCEPTUAL ELEMENTS

ELEMENT	VALUE
1. Wide-eyed, Open-mouthed Face/Male	1
2. Hair Standing Straight Out	1
3. Scientific Theme/Energy Sense	.5

ANALYTICAL ELEMENTS

ELEMENTS	VALUE
1. Young Person/Surprise	1
2. Static Electricity Demonstration	1
3. Science Center (Ontario, CA)	.5

SESSION INFORMATION

- A. TARGET DATA:
Task/Target No. :92-120-P
Session No. :01
- B. PERSONAL DATA:
Source No. :025
Monitor's No. :N/A
Beacon/Sender No. :N/A
- C. SESSION DATA:
Date Task Received :27 Oct 92
Session Date :27 Oct 92
 Start Time :10:00
 Stop Time :11:00
Method Used :ERV
Aids/Distractions (PIs) :N/A
Pre-session Hunches (AVs) :N/A
Date Summary Returned :27 Oct 92
- D. EVALUATION DATA:
Viewer's Estimate :N/A
Evaluator's Estimate :N/A
- E. SESSION SUMMARY

The target personality is someone who operates off of the mental scheme on things. This individual has many people around and there is the color red in the target photo. This individual gains money and is mentally oriented. The personality works using skills of the mind. This person is knowledgeable in the maths and sciences. We have a foreign relationship to this individual. I feel the target personality is on the younger side, enjoys the outdoors, and is divorced. The individual may be in a position where he or she is either laying down or the legs are bent to the side and somehow accentuated.

SESSION INFORMATION

A. TARGET DATA:

Task/Target No. : 92-120-P
 Session No. : 01

B. PERSONNEL DATA:

Source No. : 049
 Monitor's No. : NA
 Beacon/Sender No. : NA

C. SESSION DATA:

Date Task Received : 27 OCT 92
 Session Date : "
 Start Time : 0938
 Stop Time : 1030
 Method Used : ERV
 Aids/Distractions (PIs) : Sinuses; sick, sick, SICK!!!
 Pre-session Hunches (AVs) : None
 Date Summary Returned : 27 OCT 92

D. EVALUATION DATA:

Viewer's Estimate :
 Evaluator's Estimate :

E. SESSION SUMMARY:

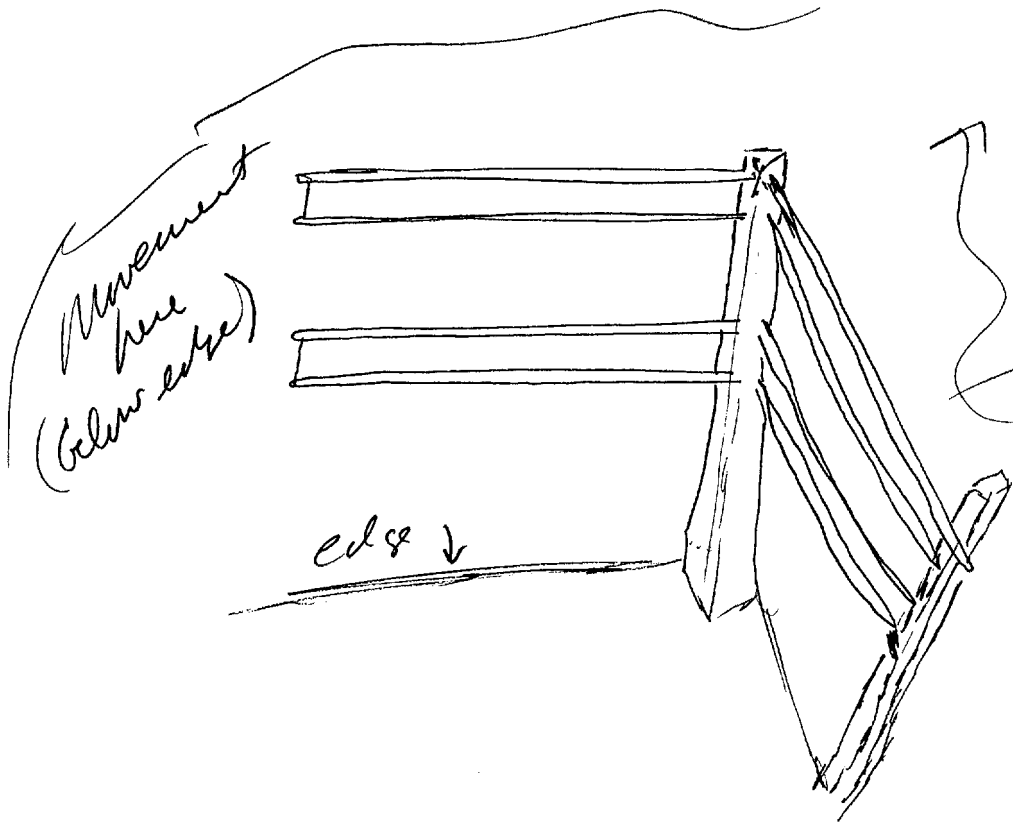
The target is a male who is involved with work which is usually hazardous and can be life-threatening at times. There is a sense of height and "living on the edge" so to speak. The individual is involved with monitoring the progression or movement of something. There is the concept of flowing and cascading associated with this movement.

There are angled features associated with support and "safety" and this individual spends alot of time "balancing on the edge". There is a sense of enormous, uncontrollable natural energy or forces involved here. The individual is concerned with, if not harnessing this energy or flow, at least potential manipulation of this movement/flow.

There is the concept of hardness covering the flow. This hardness, however, is highly unstable and can disappear as it were at any moment. There is a feature reminiscent of steam, fog, mist or smoke swirling around the individual. I see him bending down alot while involved with his monitoring efforts.

PT - *misses: pick side*
AV - *why?*

049
27 Oct 92
Ft Meade
P: 92-120-P
S: 01
ST: 0938
ET: 1030



- movement
- concept of flowing; cascading
- playground work - research
testing; monitoring.
- Male;

SESSION INFORMATION

- A. TARGET DATA:
Date: 27 Oct 92
Task/Target Number: 92 120 P
Session Number: 01
- B. PERSONNEL DATA:
Source Number: 079
Monitor Number: _____
- C. SESSION DATA:
Session Start Time: 1300
Session Stop Time: 1400
Method Used: Su/ta
Distractions/Hunches: _____
- D. EVALUATION DATA:
Viewer Confidence (H/M/L): _____
Evaluator's Estimate: _____
- E. SESSION SUMMARY:

The individual has longish dark hair. The individual is standing or sitting. The individual seems to be waiting for something. The individual is not smiling and seems to be listening and talking. Red, white, some blue, and dark colors are associated with the individual. The individual may be trying to communicate? I sensed flowers.

The clothes the individual was wearing seemed very flowing.

C O N T R O L P E R S O N I N P U T

Control Person No. 101 Date Task Initiated _____
Date of Input _____ Suspense Date _____
Task/Target No. 92-120-PK-NB

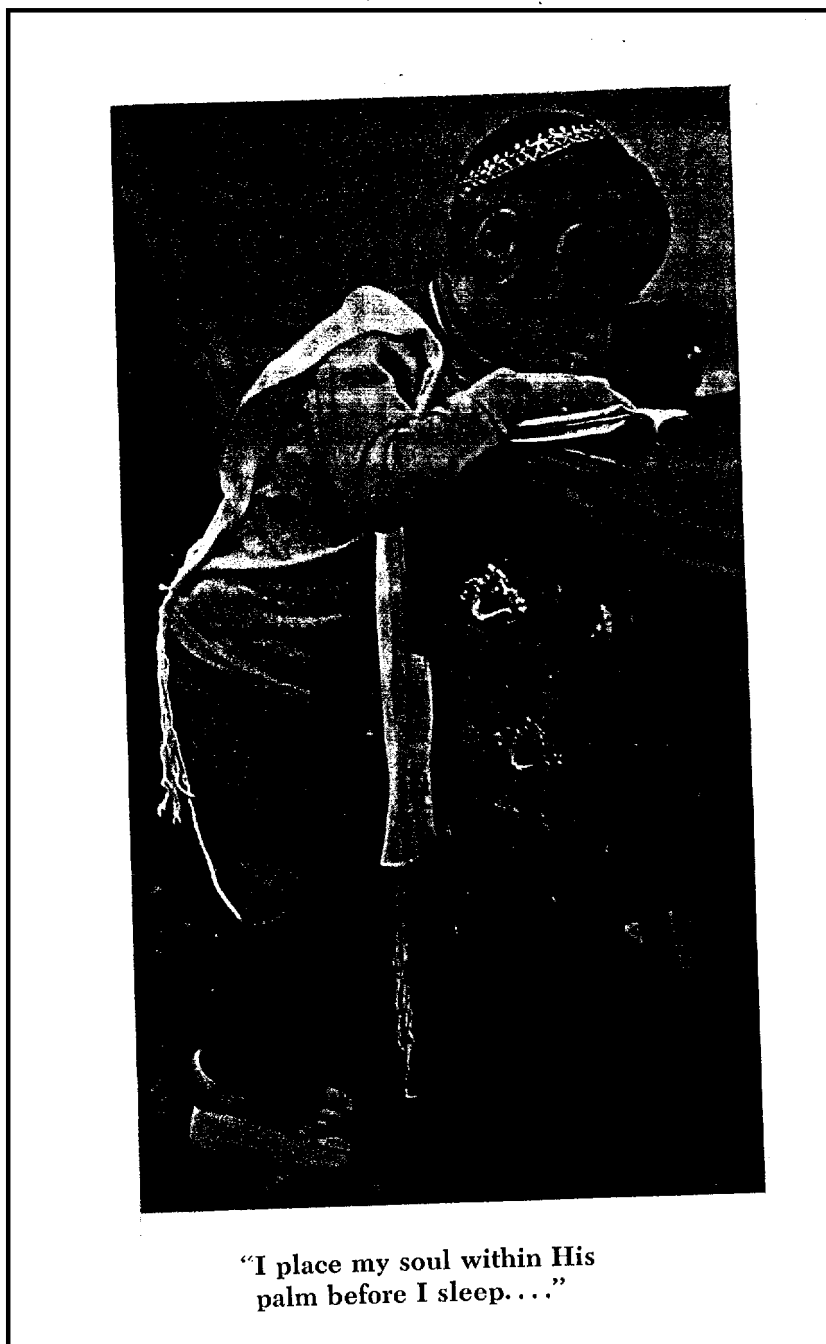
Control Person Guess:

I see the color red in this picture. You get the feeling it is very hot and there is smoke everywhere. There is much excitement in the air. The excitement is not necessary a good sign. There is a person, a strong individual wearing some sort of protective clothing and a hard hat or helmet. The person looks exhausted. The target could be a fireman fighting a fire.

EVALUATION RECORDS
PROFICIENCY PROJECTS

SOURCE	EVALUATION CATEGORIES (For Key elements)	PROFICIENCY COORDINATOR (DTI-S)	ANALYSIS SPECIALIST (DTI-S)	OUTSIDE REVIEWER ()	AVERAGE RATING
025	a. Concept/ Generic	20%	20%	16%	18
	----- b. Specifics/ Analytic	15%	20%	24%	19
049	a. Concept/ Generic	45%	50%	56%	52
	----- b. Specifics/ Analytic	25%	25%	28%	26
079	a. Concept/ Generic	5%	15%	28%	17
	----- b. Specifics/ Analytic	0%	0%	0%	.6
	a. Concept/ Generic				
	----- b. Specifics/ Analytic				
	a. Concept/ Generic				
	----- b. Specifics/ Analytic				
CONTROL	a. Concept/ Generic				
	----- b. Specifics/ Analytic				
CONTROL 101	a. Concept/ Generic	10%	30%	4%	14
	----- b. Specifics/ Analytic	5%	0%	8%	4

TAB



"I place my soul within His
palm before I sleep..."

CONCEPTUAL ELEMENTS

ELEMENT	VALUE
1. Small Male/Black Hair/Cap/White Cloth	1
2. Standing/Leaning	1
3. Indoors/Furniture	.5

ANALYTICAL ELEMENTS

ELEMENTS	VALUE
1. Young Jewish	1
2. Reading Religious Material	1
3. Bureau/Book/Box	.5

SESSION INFORMATION

- A. TARGET DATA:
 Task/Target No. :92-121-P
 Session No. :01
- B. PERSONAL DATA:
 Source No. :025
 Monitor's No. :N/A
 Beacon/Sender No. :N/A
- C. SESSION DATA:
 Date Task Received :29 Oct 92
 Session Date :29 Oct 92
 Start Time :10:00
 Stop Time :11:00
 Method Used :ERV
 Aids/Distractions (PIs) :N/A
 Pre-session Hunches (AVs) :N/A
 Date Summary Returned :29 oct 92
- D. EVALUATION DATA:
 Viewer's Estimate :N/A
 Evaluator's Estimate :N/A
- E. SESSION SUMMARY

A lady is expressing herself in relation to an activity or event that people engage in. Hyper. Land may be featured indicating a designated place. This personality is a form of expression showing facial emotion as a response to her surroundings. There is despair due to enviromental factors. The circumstances force people to take another look at themselves, nature, and our world. We have a choice between beauty, or poverty and a lack of growth. The target personality is a kind of rebel.

SESSION INFORMATION

A. TARGET DATA:

Task/Target No. : 92-121-P
Session No. : 01

B. PERSONNEL DATA:

Source No. : 049
Monitor's No. : NA
Beacon/Sender No. : NA

C. SESSION DATA:

Date Task Received : 29 OCT 92
Session Date : "
Start Time : 1457
Stop Time : 1510
Method Used : CRV
Aids/Distractions (PIs) : Sinuses; it really stinks in this
building; smells like something has died !
Pre-session Hunches (AVs) : None
Date Summary Returned : 29 OCT 92

D. EVALUATION DATA:

Viewer's Estimate : Survey sez...NOT!!!
Evaluator's Estimate :

E. SESSION SUMMARY:

The target is in an area where it is both flat, dry and open as well as wild or exotic. The target is a woman with dark brown hair. She is lying on her stomach on the ground taking photographs. She is independent, isolated and self-reliant. The recent loss of something or someone (an older person?) is very sorrowful for this person.

The concepts of lunch, boring, children and spouse are associated with the target. Horizontal stripes reminiscent of a muti-banded textile or weaving is apparent.

It stinks too damn much to work in here!!! Something has definitely died in, or under, the CRV room.

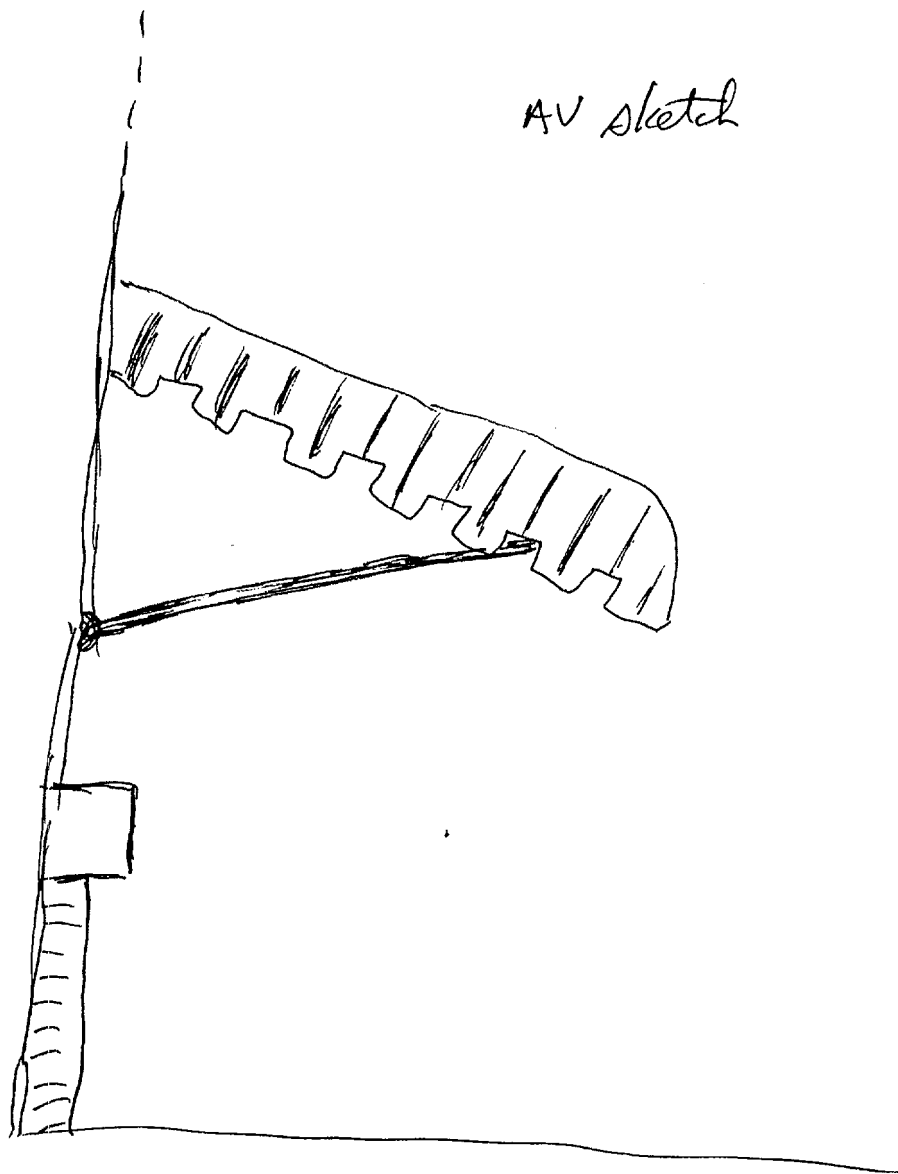
Pt - ...

stinks in the bag.

AV - right !!

049
29 Oct 92
Ft Meade
P: 92-121-P
S: 01
ST: 1457
ET: 1510

AV sketch



SESSION INFORMATION

A. TARGET DATA:

Date: 30 Oct 92
Task/Target Number: 92 121 P
Session Number: 01

B. PERSONNEL DATA:

Source Number: 079
Monitor Number: _____

C. SESSION DATA:

Session Start Time: 1000
Session Stop Time: 1030
Method Used: Solo
Distractions/Hunches: _____

D. EVALUATION DATA:

Viewer Confidence (H/M/L): _____
Evaluator's Estimate: _____

E. SESSION SUMMARY:

The individual had brown hair. The individual was standing and his arms and hands seemed to be moving outward and upward. The individual was not real young and not real old. It looked as though something was either over or on the individual's head. The individual looked to be in a natural environment. The individual looked as though he had strength and could be inspirational.

Brown + green - colors.

C O N T R O L P E R S O N I N P U T

Control Person No. 101 Date Task Initiated _____
Date of Input _____ Suspense Date _____
Task/Target No. 92-121-P-NB

C o n t r o l P e r s o n G u e s s :

I get the feeling there is a very stressful situation related to this picture. There are dark colors (mostly green). The male figure in this picture is a leader (probably a military officer) wearing an uniform with many medals. He has a very large strong build, not overweight, just big. You get the feeling he is in charge and those around him have confidence in his opinion.

EVALUATION RECORDS
PROFICIENCY PROJECTS

SOURCE	EVALUATION CATEGORIES (For Key elements)	PROFICIENCY COORDINATOR (DTI-S)	ANALYSIS SPECIALIST (DTI-S)	OUTSIDE REVIEWER ()	AVERAGE RATING
025	a. Concept/ Generic	0%	0%	0%	0
	----- b. Specifics/ Analytic	0%	0%	0%	0
049	a. Concept/ Generic	5%	10%	8%	7
	----- b. Specifics/ Analytic	0%	0%	0%	0
079	a. Concept/ Generic	30%	30%	58%	39
	----- b. Specifics/ Analytic	25%	20%	44%	29
	a. Concept/ Generic				
	----- b. Specifics/ Analytic				
	a. Concept/ Generic				
	----- b. Specifics/ Analytic				
CONTROL	a. Concept/ Generic				
	----- b. Specifics/ Analytic				
CONTROL 101	a. Concept/ Generic	5%	10%	0%	5
	----- b. Specifics/ Analytic	0%	0%	0%	0

TAB



CONCEPTUAL ELEMENTS

ELEMENT	VALUE
1. Male in Dark Clothes	1
2. Flowing Hair/Mask/Bubbles	1
3. Sense of Water/Underwater/Dark Blue	1
4. Small Flying/Floating Elliptical Shapes	1

ANALYTICAL ELEMENTS

ELEMENTS	VALUE
1. Scuba Diver/Wet Suit	1
2. School of Fish	1

SESSION INFORMATION

- A. TARGET DATA:
Task/Target No. :92-124-P
Session No. :01
- B. PERSONAL DATA:
Source No. :025
Monitor's No. :N/A
Beacon/Sender No. :N/A
- C. SESSION DATA:
Date Task Received :3 Nov 92
Session Date :4 Nov 92
Start Time :11:00
Stop Time :12:00
Method Used :ERV
Aids/Distractions (PIs) :N/A
Pre-session Hunches (AVs) :N/A
Date Summary Returned :4 Nov 92
- D. EVALUATION DATA:
Viewer's Estimate :N/A
Evaluator's Estimate ;
- E. SESSION SUMMARY

The target shows blue. Water may be reflected at this place. The image is mysterious and the individual is on some kind of a dark structure or boat. The individual is going somewhere and there is movement about her. This personality is young, female and thin, with dark skin and dark eyes which are emphasized. The colors red and yellow are predominant. Fruit can be found in her environment to include bananas. This image is work related and feminine in nature.

SESSION INFORMATION

- A. TARGET DATA:
Task/Target No. : 92-124-P
Session No. : 01
- B. PERSONNEL DATA:
Source No. : 049
Monitor's No. : NA
Beacon/Sender No. : NA
- C. SESSION DATA:
Date Task Received : 3 NOV 92
Session Date : 4 NOV 92
Start Time : 1145
Stop Time : 1247
Method Used : CRV/ERV
Aids/Distractions (PIs) : Sinuses; tired
Pre-session Hunches (AVs) : None
Date Summary Returned : 4 NOV 92
- D. EVALUATION DATA:
Viewer's Estimate : -----
Evaluator's Estimate :
- E. SESSION SUMMARY:

The target is a man. He thinks of himself as a "cowboy" type and has a large moustache. Some one has told him recently that "You're no friend of mine". He is associated with objects which are "really big" and reminiscent of horns.

The target's movements parallel my own; what that means I have no idea. The concept of "Data Systems vs. Record Recordings" was perceived (?).

The target is associated with a major "site" in Lebanon. An old car blows it up (the site [?]) and there is the concern of how one gets away from it.

There is the front portion of a car/boat/plane visible above either the water surface or the ground/mud. The individual appears to "hover" over and around the vehicular object.

There were the concepts of smoke, dust, chaos and anarchy associated with the target. There were also strong associations of "French" and "Mid Eastern" with the target.

SESSION INFORMATION

- A. TARGET DATA:
Date: 4 Nov 92
Task/Target Number: 92 124 P
Session Number: 01
- B. PERSONNEL DATA:
Source Number: 079
Monitor Number: _____
- C. SESSION DATA:
Session Start Time: 1530
Session Stop Time: 1600
Method Used: Sc/0
Distractions/Hunches: _____
- D. EVALUATION DATA:
Viewer Confidence (H/M/L): _____
Evaluator's Estimate: _____
- E. SESSION SUMMARY:

The individual is standing and looking out in a serious manner. The individual is conservative and can be considered wise. The individual is wearing brown. Other colors seen were blue, green, and red. The individual may be male.

The individual is used to crowds.

(The feeling of money/banking came to me?)

C O N T R O L P E R S O N I N P U T

Control Person No. 101 Date Task Initiated _____
Date of Input _____ Suspense Date _____
Task/Target No. 92-124-P

Control Person Guess:

Signs of war and destruction are everywhere. Homes are destroyed and there is virtually no signs of peace anywhere. Small fires are still burning among the destroyed homes. I see a small child among the ruins. The child seems to be all that is left of what once must of been his village or home. The sadden face of the child makes you want to reach out, help and reassure him that things will be okay.

EVALUATION RECORDS

PROFICIENCY PROJECTS

SOURCE	EVALUATION CATEGORIES (For Key elements)	PROFICIENCY COORDINATOR (DTI-S)	ANALYSIS SPECIALIST (DTI-S)	OUTSIDE REVIEWER ()	AVERAGE RATING
025	a. Concept/ Generic	40%	40%	38%	39
	b. Specifics/ Analytic	10%	0%	0%	3
049	a. Concept/ Generic	10%	10%	28%	16
	b. Specifics/ Analytic	0%	0%	0%	0
079	a. Concept/ Generic	15%	20%	18%	17
	b. Specifics/ Analytic	0%	0%	0%	0
	a. Concept/ Generic				
	b. Specifics/ Analytic				
	a. Concept/ Generic				
	b. Specifics/ Analytic				
CONTROL	a. Concept/ Generic				
	b. Specifics/ Analytic				
CONTROL 101	a. Concept/ Generic	0%	0%	5%	1
	b. Specifics/ Analytic	0%	0%	0%	0

TAB

CPYRGHT



CONCEPTUAL ELEMENTS

ELEMENT	VALUE
1. Dark-Skinned Male/Large Nose/Somber	1
2. Red Hat/Long Grey Gown/Holding Objects	1

ANALYTICAL ELEMENTS

ELEMENTS	VALUE
1. Middle-Aged Indian (Country)	1
2. Vendor/Selling Boots	1

SESSION INFORMATION

- A. TARGET DATA:
 Task/Target No. :92-125-P
 Session No. :01
- B. PERSONAL DATA:
 Source No. :025
 Monitor's No. :N/A
 Beacon/Sender No. :N/A
- C. SESSION DATA:
 Date Task Received :4 Nov 92
 Session Date :5 Nov 92
 Start Time :10:00
 Stop Time :11:00
 Method Used :ERV
 Aids/Distractions (PIs) :N/A
 Pre-session Hunches (AVs) :N/A
 Date Summary Returned :5 Nov 92
- D. EVALUATION DATA:
 Viewer's Estimate :N/A
 Evaluator's Estimate :
- E. SESSION SUMMARY

The target personality is an older or mature male with darkened features. A pier is in his environment which is in an isolated area near water and the color gray is visible. The area is a landing zone of sorts. A form of travel occurs here in a wide range area either by vessel or by plane. The target personality is earnest in his attempt (land over or above water) and he has a lucid smile on his face. He is a man who has accepted challenges, taken journeys, and now may be alone by water.

SESSION INFORMATION

A. TARGET DATA:

Task/Target No. : 92-125-P
Session No. : 01

B. PERSONNEL DATA:

Source No. : 049
Monitor's No. : NA
Beacon/Sender No. : NA

C. SESSION DATA:

Date Task Received : 4 NOV 92
Session Date : 5 NOV 92
 Start Time : 1148
 Stop Time : 1217
Method Used : ERV
Aids/Distractions (PIs) : Sinuses; spaced out.
Pre-session Hunches (AVs) : None
Date Summary Returned : 5 NOV 92

D. EVALUATION DATA:

Viewer's Estimate :
Evaluator's Estimate :

E. SESSION SUMMARY:

The target is a woman with long brown or light brown hair. Although it cascades over her back, she often wears it wrapped within a cloth on her head. This cloth is a light color and light-weight material. She deals with emergency situations at times. This requires her to bend over another person and/or table in order to get as close as possible to her task.

There is the impression that a large object reminiscent of a rock or boulder is falling, or has fallen, near to the target. There are a number of objects reminiscent of books or manuscripts stacked around her.

There is a hollow, echoing sound which reverberates throughout the target area. It is reminiscent of a hammer hitting an anvil or a large steeple bell, etc. The sound seems to carry on over a great distance.

There is some brilliant red colored cloth within the scene; either clothing or some type of wall hanging or upholstery. However, there is an overall feeling of plain-ness or humility associated with the individual.

SESSION INFORMATION

- A. TARGET DATA:
Date: 5 Nov 92
Task/Target Number: 92 125 P
Session Number: 01
- B. PERSONNEL DATA:
Source Number: 079
Monitor Number: _____
- C. SESSION DATA:
Session Start Time: 1130
Session Stop Time: 1200
Method Used: Solo
Distractions/Hunches: _____
- D. EVALUATION DATA:
Viewer Confidence (H/M/L): _____
Evaluator's Estimate: _____
- E. SESSION SUMMARY:

The individual is sitting and is wearing the colors gray and white. Gold is another color that can be seen. The individual is wearing something decorative around the neck. The individual is young and has light hair (maybe light brown). There was a triangular object that was gold and white and was associated with the individual. This object could be a hat. It seems as though the individual is showing or displaying something and the feeling is that the individual wants you to look or notice something. The individual has closed lips.

C O N T R O L P E R S O N I N P U T

Control Person No. 101 Date Task Initiated _____
Date of Input _____ Suspense Date _____
Task/Target No. 92-125-P

Control Person Guess:

The person in this picture is a man, a man of political power. He is tall, slender and very athletic for his age. From the expression on his face and the way he is standing you can sense the air of confidence he has in what he is saying. There must be a meeting of great importance and significance in progress. The target seems to be speaking to the group. This man could be a President, Prime Minister or King.

EVALUATION RECORDS
PROFICIENCY PROJECTS

SOURCE	EVALUATION CATEGORIES (For Key elements)	PROFICIENCY COORDINATOR (DTI-S)	ANALYSIS SPECIALIST (DTI-S)	OUTSIDE REVIEWER ()	AVERAGE RATING
025	a. Concept/ Generic	30%	40%	40%	36
	----- b. Specifics/ Analytic	25%	25%	25%	25
049	a. Concept/ Generic	30%	30%	40%	33
	----- b. Specifics/ Analytic	25%	25%	0%	16
079	a. Concept/ Generic	55%	50%	30%	45
	----- b. Specifics/ Analytic	30%	20%	35%	28
	a. Concept/ Generic				
	----- b. Specifics/ Analytic				
	a. Concept/ Generic				
	----- b. Specifics/ Analytic				
CONTROL	a. Concept/ Generic				
	----- b. Specifics/ Analytic				
CONTROL 101	a. Concept/ Generic	25%	20%	15%	20
	----- b. Specifics/ Analytic	5%	0%	10%	5

TAB

CPYRGHT



CONCEPTUAL ELEMENTS

ELEMENT	VALUE
1. Bare-Chested Dark/Black Man/Side View	1
2. Arms Moving/Holding Objects	1
3. Ornaments/Equipment	.5

ANALYTICAL ELEMENTS

ELEMENTS	VALUE
1. Middle-Aged/Old Negro/African	1
2. Artisan/Weaving	1

SESSION INFORMATION

A. TARGET DATA:

Task/Target No. :92-129
Session No. :01

B. PERSONAL DATA:

Source No. :025
Monitor's No. :N/A
Beacon/Sender No. :N/A

C. SESSION DATA:

Date Task Received :23 Nov 92
Session Date :01
 Start Time :1:00
 Stop Time :2:00
Method Used :ERV
Aids/Distractions (PIs) :N/A
Pre-session Hunches (AVs) :N/A

Date Summary Returned :23 Nov 92

D. EVALUATION DATA:

Viewer's Estimate :N/A
Evaluator's Estimate :

E. SESSION SUMMARY

The target personality is young yet mature with straight semi-long dark hair and big dark eyes. The personality is male and well poised or positioned. He is not wearing much clothing and is featured alone in a remote setting. The expression on the personality's face invokes sympathy on the part of the viewer. This photograph depicts a foreign land or country which is culturally interesting but is dry or infertile environmentally.

SESSION INFORMATION

- A. TARGET DATA:
Date: 24 Nov 92
Task/Target Number: 92 129 P
Session Number: 01
- B. PERSONNEL DATA:
Source Number: 079
Monitor Number: —
- C. SESSION DATA:
Session Start Time: 1300
Session Stop Time: 1400
Method Used: Solo
Distractions/Hunches: —
- D. EVALUATION DATA:
Viewer Confidence (H/M/L): —
Evaluator's Estimate: —
- E. SESSION SUMMARY:

The personality was wearing vivid colors. At first I could see purple and then green and red and then blue. The personality was smiling or grining. The clothing seemed clown-like. It looked like the individual was moving sideways or sitting sideways. Roundness was associated with the personality or site. It looked as though there was another person with the main individual.

C O N T R O L P E R S O N I N P U T

Control Person No. 101 Date Task Initiated _____
Date of Input _____ Suspense Date _____
Task/Target No. 92-129-92

Control Person Guess:

The setting in this picture is outdoors. The area is flat, manmade and a very hard surface. There seems to be a sporting event taking place. The person in this picture is a man between the ages of 20 and 30. There are other people in the picture but, the main person is this man dressed in light color clothing. The event could be a tennis match and the target is a tennis player.

EVALUATION RECORDS
PROFICIENCY PROJECTS

SOURCE	EVALUATION CATEGORIES (For Key elements)	PROFICIENCY COORDINATOR (DTI-S)	ANALYSIS SPECIALIST (DTI-S)	OUTSIDE REVIEWER ()	AVERAGE RATING
025	a. Concept/ Generic	65%	60%	28%	51
	----- b. Specifics/ Analytic	60%	50%	10%	40
049	a. Concept/ Generic	-----	-----	-----	-----
	----- b. Specifics/ Analytic				
079	a. Concept/ Generic	10%	20%	10%	13
	----- b. Specifics/ Analytic	0%	0%	0%	0
	a. Concept/ Generic	-----	-----	-----	-----
	----- b. Specifics/ Analytic				
	a. Concept/ Generic	-----	-----	-----	-----
	----- b. Specifics/ Analytic				
CONTROL	a. Concept/ Generic	-----	-----	-----	-----
	----- b. Specifics/ Analytic				
CONTROL 101	a. Concept/ Generic	10%	20%	0%	10
	----- b. Specifics/ Analytic	5%	0%	0%	1

TAB

CPYRGHT



CONCEPTUAL ELEMENTS

ELEMENT	VALUE
1. Dark Skinned Woman/Facing Right	1
2. White Garments/Carrying Object	1
3. Round Objects in Foreground	1

ANALYTICAL ELEMENTS

ELEMENTS	VALUE
1. Negro/African/Mid-Aged	1
2. Kitchen Utensils/Food/Cooking	1
3. Large Bowl with Nuts/Beans	.5

SESSION INFORMATION

- A. TARGET DATA:
Task/Target No. :92-130-P
Session No. :01
- B. PERSONAL DATA:
Source No. :025
Monitor's No. :N/A
Beacon/Sender No. :N/A
- C. SESSION DATA:
Date Task Received :25 Nov 92
Session Date :27 Nov 92
Start Time :10:30
Stop Time :11:30
Method Used :ERV
Aids/Distractions (PIs) :N/A
Pre-session Hunches (AVs) :N/A
Date Summary Returned :27 Nov 92
- D. EVALUATION DATA:
Viewer's Estimate :N/A
Evaluator's Estimate :N/A
- E. SESSION SUMMARY

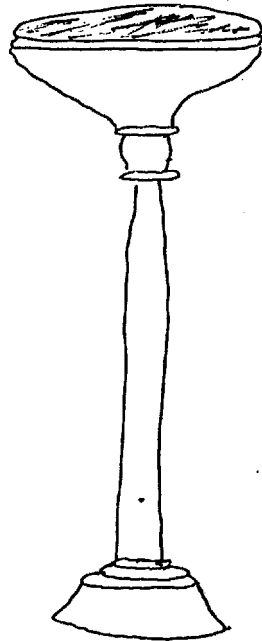
The target personality is a female in a sitting position. Something semi-arch shaped is near the bottom of the photo which is orange-brown in color. The individual is stationary and seated separately. There is an expression of feeling which is almost softly poetic in essence or insightful. An old hand can be seen possibly grasping something shaped like a cane. There may be reference to another person present. The individual is looking outward and is reflective in thought.

SESSION INFORMATION

- A. TARGET DATA:
Task/Target No. : 92-130-P
Session No. : 01
- B. PERSONNEL DATA:
Source No. : 049
Monitor's No. : NA
Beacon/Sender No. : NA
- C. SESSION DATA:
Date Task Received : 30 NOV 92
Session Date : "
Start Time : 1105
Stop Time : 1132
Method Used : CRV
Aids/Distractions (PIs) : Building really stinks!
Pre-session Hunches (AVs) : None
Date Summary Returned : 30 NOV 92
- D. EVALUATION DATA:
Viewer's Estimate :
Evaluator's Estimate :
- E. SESSION SUMMARY:

The target is associated in some way with both music and wood and/or wood working. They bring or put together pieces of something. It is hard to determine gender. Probably a man; however, an almost "effete" acting male. He is too soft, too sensitive and non-aggressive in a masculine sense. Yet, he is impatient with those he works with and can become aggressive-like while working towards completion of a task. He has round glasses and longer, unkept hair. He is required to work on a project or task for a very long time. He is wishing that his parents were still alive. He is a lonely person. He has a restricted lifestyle or physical limitation.

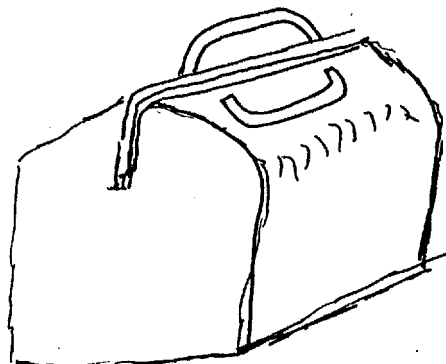
The setting feels like a living room or study and European. There is associated moving water nearby reminiscent of a stream or canal; something small, not large. Books and/or manuscripts are important to this person. There are a number of glass-like objects present; their surfaces are bumpy as well as sharp and angular. Can hear a piano and accompaniment in the background.



1/1 wooden oboe

Associated w/
music

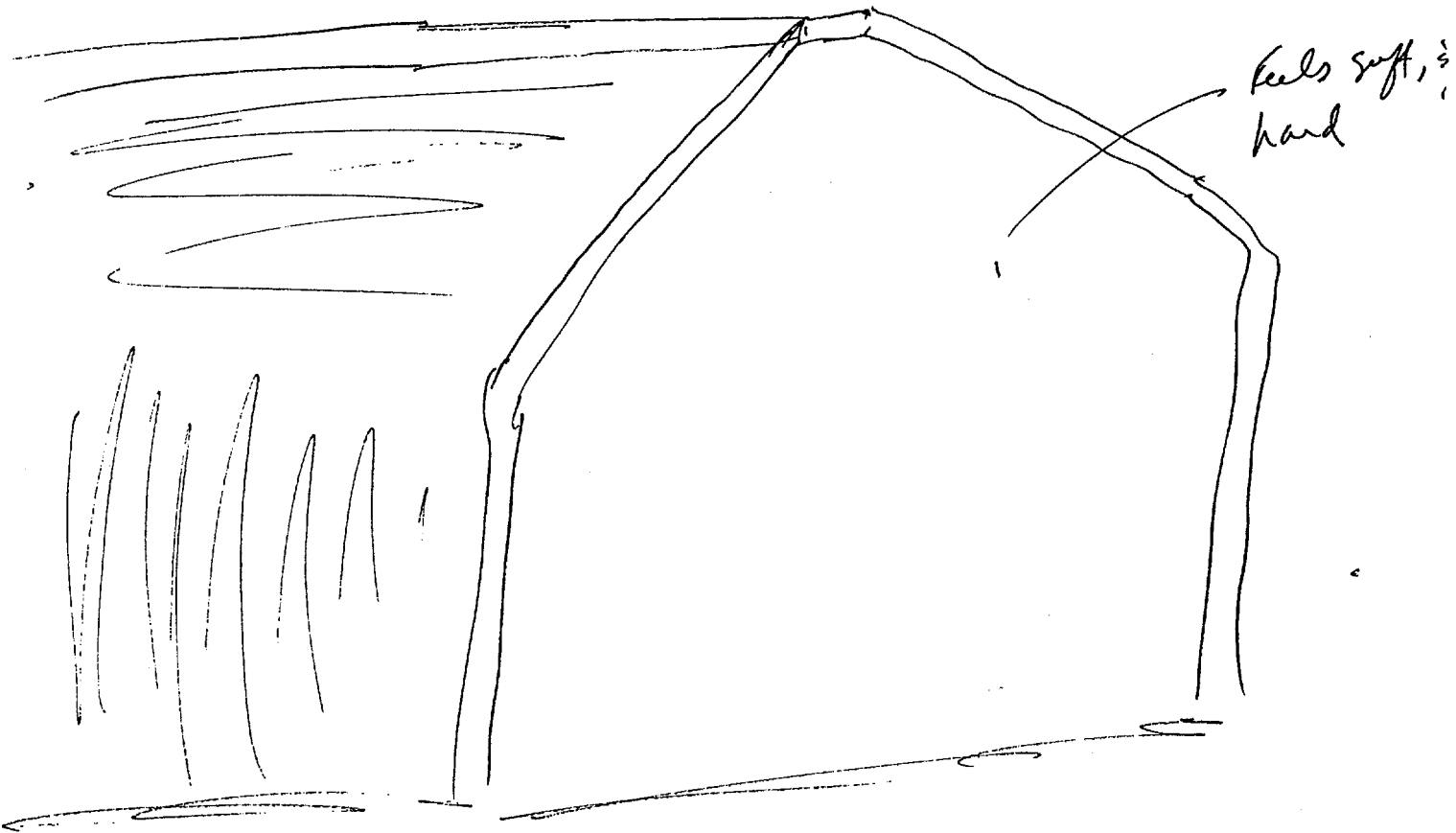
- can hear the piano & accompaniment in
background.



Books

Glass-like objects; surfaces are
bumpy; some are sharp &
angular

A/s
Cut glass
vases, etc



SESSION INFORMATION

- A. TARGET DATA:
Date: 30 NOV 92
Task/Target Number: 92 130P
Session Number: 01
- B. PERSONNEL DATA:
Source Number: 079
Monitor Number:
- C. SESSION DATA:
Session Start Time: 1000
Session Stop Time: 1030
Method Used: Solo
Distractions/Hunches:
- D. EVALUATION DATA:
Viewer Confidence (H/M/L):
Evaluator's Estimate:
- E. SESSION SUMMARY:

The individual was standing. The individual's arms were stretched out or down or one arm could be stretched out and one arm was stretched out. The individual could be holding an object in one hand. The individual was not smiling but seemed positive. The individual was wearing long loose clothing (robe-like). Dark colors were associated with the individual but there was blue and some red associated with the individual. The individual could be involved in communications and I got the feeling that he could help or was in a position of helping.

Reflection/reflecting came to mind.

C O N T R O L P E R S O N I N P U T

Control Person No. 101 Date Task Initiated _____
Date of Input _____ Suspense Date _____
Task/Target No. 92-130-92

Control Person Guess:

The setting is a small town situated on the hillside. The houses are all white and small in size. From the design of the houses, this could be a village or town located somewhere in Spain. There is a woman, short but stocky. She reminds me of someone's Grandmother, age about 60's and a very pleasant face. She is sitting working on something with her hands.

EVALUATION RECORDS

PROFICIENCY PROJECTS

SOURCE	EVALUATION CATEGORIES (For Key elements)	PROFICIENCY COORDINATOR (DTI-S)	ANALYSIS SPECIALIST (DTI-S)	OUTSIDE REVIEWER ()	AVERAGE RATING
025	a. Concept/ Generic	25%	25%	57%	35
	b. Specifics/ Analytic	10%	0%	0%	3
049	a. Concept/ Generic	5%	10%	33%	16
	b. Specifics/ Analytic	0%	0%	19%	6
079	a. Concept/ Generic	50%	50%	20%	40
	b. Specifics/ Analytic	15%	10%	0%	8
	a. Concept/ Generic				
	b. Specifics/ Analytic				
	a. Concept/ Generic				
	b. Specifics/ Analytic				
CONTROL	a. Concept/ Generic				
	b. Specifics/ Analytic				
CONTROL 101	a. Concept/ Generic	40%	30%	27%	32
	b. Specifics/ Analytic	15%	0%	14%	9

TAB

Flight to freedom: English-speaking Reverend William Johnson tells how his forebears left the United States and settled on the Samaná Peninsula in the 1820's. Ancestors of other Dominican blacks came as slaves direct from Africa. Black and white minorities stand at opposite ends of the social ladder, while the numerically dominant mulatto class pervades all levels of society.



CONCEPTUAL ELEMENTS

ELEMENT	VALUE
1. Dark Skinned Man/White Shirt, Tie	1
2. Sitting/Hands Out-Stretched/Smiling	1
3. Sense of Freedom	.5

ANALYTICAL ELEMENTS

ELEMENTS	VALUE
1. Middle-Aged Negro/African Origin	1
2. Preacher/Dominican Republic	1

SESSION INFORMATION

- A. TARGET DATA:
 Task/Target No. :92-131-P
 Session No. :01
- B. PERSONAL DATA:
 Source No. :025
 Monitor's No. :N/A
 Beacon/Sender No. :N/A
- C. SESSION DATA:
 Date Task Received :1 Dec 92
 Session Date :1 Dec 92
 Start Time :9:30
 Stop Time :10:30
 Method Used :ERV
 Aids/Distractions (PIs) :N/A
 Pre-session Hunches (AVs) :N/A
 Date Summary Returned :1 Dec 92
- D. EVALUATION DATA:
 Viewer's Estimate :N/A
 Evaluator's Estimate :
- E. SESSION SUMMARY

The target personality is located near a tall, high building of many stories in an inner city metropolitan area. The target personality is associated with the color black, is cloaked in clothing draped about him, and is wearing big heavy boots which are conducive to his environment. Dirt shoveling construction or work of this nature is in the vicinity. Although it may not be pictured, a bridge with a river running under it can be found nearby in the city. This site is gutteral sounding.

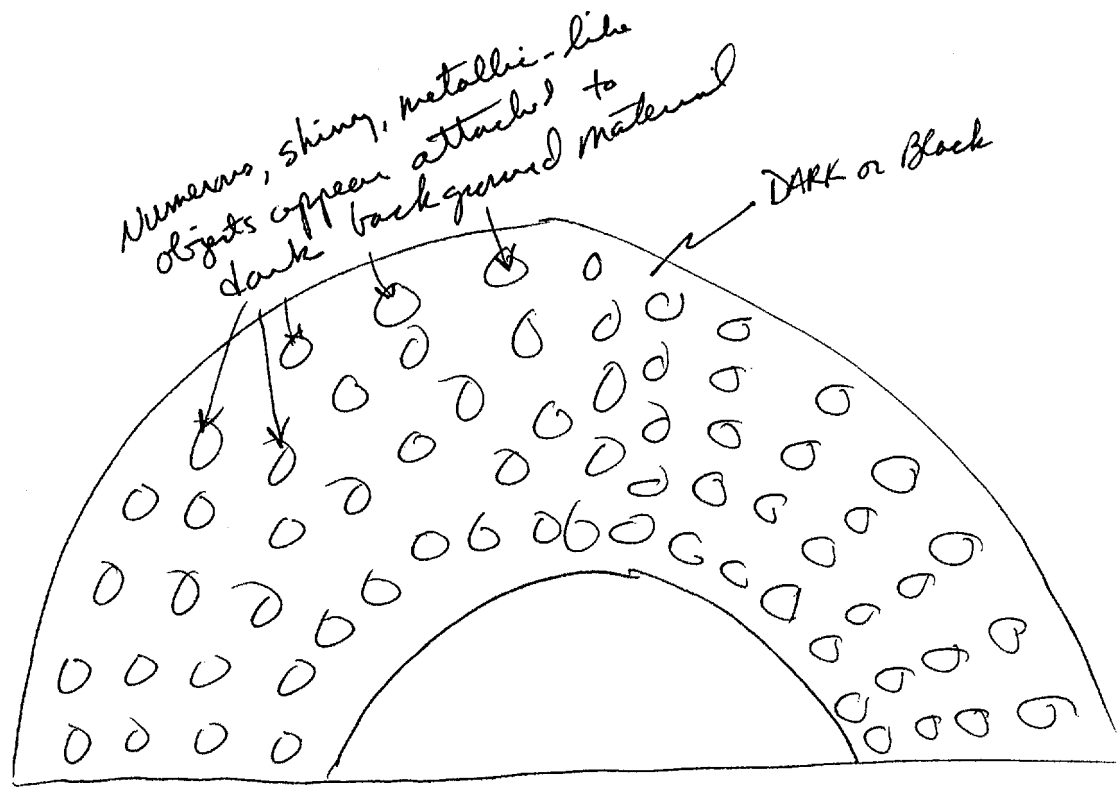
SESSION INFORMATION

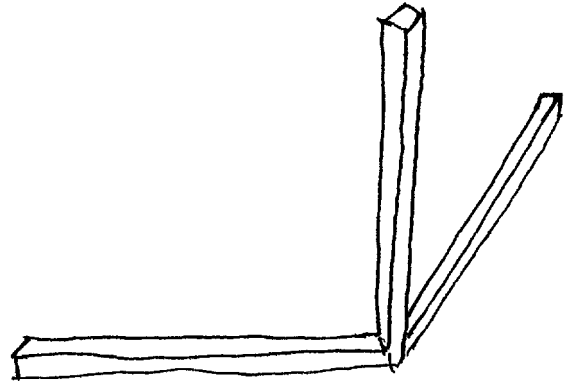
- A. TARGET DATA:
Task/Target No. : 92-131-P
Session No. : 01
- B. PERSONNEL DATA:
Source No. : 049
Monitor's No. : NA
Beacon/Sender No. : NA
- C. SESSION DATA:
Date Task Received : 30 NOV 92
Session Date : 1 DEC 92
Start Time : 1130
Stop Time : 1212
Method Used : ERV
Aids/Distractions (PIs) : Upset stomach
Pre-session Hunches (AVs) : None
Date Summary Returned : 1 DEC 92
- D. EVALUATION DATA:
Viewer's Estimate :
Evaluator's Estimate :
- E. SESSION SUMMARY:

The target is a male. He is standing, somewhat isolated, within a circular area. This area feels as if it is enclosed at times. There is a circular, whirling motion associated with this individual. There is also the sense of flowing or rippling features reminiscent of fabric or clothe flapping in the wind.

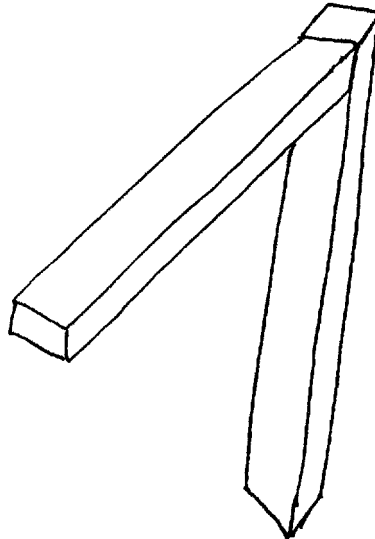
There are a number of angular objects which feel more open than solid. These seem to appear almost randomly around the individual.

There is a sense that it is dry and dusty; however, the ground is taken care of i.e. manicured, regularly.





*yellowish color;
maybe gold*



SESSION INFORMATION

- A. TARGET DATA: Dec 1 1992
Date: _____
Task/Target Number: 92131P
Session Number: _____
- B. PERSONNEL DATA: 679
Source Number: _____
Monitor Number: _____
- C. SESSION DATA:
Session Start Time: 1000
Session Stop Time: 1030
Method Used: S/L
Distractions/Hunches: _____
- D. EVALUATION DATA:
Viewer Confidence (H/M/L): _____
Evaluator's Estimate: _____
- E. SESSION SUMMARY:

The individual is standing. The individual's hands are together and they are touching each other. The expression on the individual's face seems to be serious and the individual's eyes seems to be looking down. The individual is wearing short sleeves. The individual's arms are showing. Green, blue, yellow, and gold are associated with the personality. There is a circular object associated with the individual. The individual may be holding the circular object but sometimes it looked like the object was over the individual's head. The individual is standing in a natural environment.

"Farming" came to mind.

C O N T R O L P E R S O N I N P U T

Control Person No. 101 Date Task Initiated _____
Date of Input _____ Suspense Date _____
Task/Target No. 92-131-92

Control Person Guess:

The background contains dark colors. There are signs (similar to billboards) surrounding the main figure in this picture. These signs are in a foreign language either Chinese or Japanese. The person in this picture is a man with dark hair and a very serious look on his face. I'm not sure exactly what this individual is doing. The age of this man is approximately 50 - 55 years.

TARGET

P

EVALUATION RECORDS
PROFICIENCY PROJECTS

SOURCE	EVALUATION CATEGORIES (For Key elements)	PROFICIENCY COORDINATOR (DTI-S)	ANALYSIS SPECIALIST (DTI-S)	OUTSIDE REVIEWER ()	AVERAGE RATING
025	a. Concept/ Generic	10%	20%	16%	15
	b. Specifics/ Analytic	5%	0%	10%	5
049	a. Concept/ Generic	15%	10%	12%	12
	b. Specifics/ Analytic	5%	0%	0%	1
079	a. Concept/ Generic	10%	10%	0%	6
	b. Specifics/ Analytic	5%	0%	0%	1
	a. Concept/ Generic				
	b. Specifics/ Analytic				
	a. Concept/ Generic				
	b. Specifics/ Analytic				
CONTROL	a. Concept/ Generic				
	b. Specifics/ Analytic				
CONTROL 101	a. Concept/ Generic	25%	20%	0%	15
	b. Specifics/ Analytic	15%	20%	0%	8

TAB



Happy to go native, Massachusetts transplant Lillian Porterie wears part of her collection of Indian jewelry on the job. Her employer, Honeywell, found an added bonus in the desert. Tiny specks of solder are best removed from delicate computer components by using the spines of the abundant cholla cactus.

CONCEPTUAL ELEMENTS

ELEMENT	VALUE
1. Caucasian Woman Facing Down/Right Arm Extended	1
2. Thick Glasses/Long Blond Hair/ Blue Clothes/Cap	1
3. Ornate Jewelry/Hand Work	1

ANALYTICAL ELEMENTS

ELEMENTS	VALUE
1. Middle-Aged Factory Worker	1
2. Computer Component Assembly	1
3. Silver Arm Bands/Large Rings	1

SESSION INFORMATION

- A. TARGET DATA:
 Task/Target No. :92-133-P
 Session No. :01
- B. PERSONAL DATA:
 Source No. :025
 Monitor's No. :N/A
 Beacon/Sender No. :N/A
- C. SESSION DATA:
 Date Task Received :8 Dec 92
 Session Date :8 Dec 92
 start Time :9:30
 stop Time :10:30
 Method Used :ERV
 Aids/Distractions (PIs) :N/A
 Pre-session Hunches (AVs) :N/A
 Date Summary Returned :8 Dec 92
- D. EVALUATION DATA:
 Viewer's Estimate :N/A
 Evaluator's Estimate :
- E. SESSION SUMMARY

The target personality is an older male with a round face and white hair. He has a receding hair line and a somewhat shiny forehead. This man is at peace with himself and is dreamy by nature. The personality is doing something for the sake of an event. This person seems to be situated or highlighted from above to be given a lower perspective in the photo. His face/skin is predominant. He has a love for animals and is family oriented. His activity is both playful and enjoyable.

SESSION INFORMATION

- A. TARGET DATA:
 Task/Target No. : 92-133-P
 Session No. : 01
- B. PERSONNEL DATA:
 Source No. : 049
 Monitor's No. : NA
 Beacon/Sender No. : NA
- C. SESSION DATA:
 Date Task Received : 8 DEC 92
 Session Date : "
 Start Time : 1130
 Stop Time : 1245
 Method Used : ERV
 Aids/Distractions (PIs) : Impending surgery
 Pre-session Hunches (AVs) : None
 Date Summary Returned : 8 DEC 92
- D. EVALUATION DATA:
 Viewer's Estimate :
 Evaluator's Estimate :
- E. SESSION SUMMARY:

All that I could perceive with this target was that the individual was a male. He appeared to be elevated above the surrounding area. Although it felt as if he were firmly standing on a level place, he was surrounded by emptiness.

He was preoccupied with looking downwards, as if reassuring himself that his feet were firmly planted on what he was standing on. The object he was standing on was reminiscent of a circular tower or pedestal. However, there was a "natural" feeling pertaining to the object; as if it were of stone, shaped stone or a mixture of stone and some other substance.

He seemed to just stand there, always looking downwards. His clothing consisted of a "set" of something; that is, the different articles were a "set". The clothing was smooth and had almost a sheen to them. They felt slippery. It feels as if there was a long, white curve below him which extended into seemingly nothingness.

SESSION INFORMATION

A. TARGET DATA:

Date: 8 DEC 92
Task/Target Number: 92-133-P
Session Number: 01

B. PERSONNEL DATA:

Source Number: 079
Monitor Number: _____

C. SESSION DATA:

Session Start Time: 1400
Session Stop Time: 1450
Method Used: ERV
Distractions/Hunches: None

D. EVALUATION DATA:

Viewer Confidence (H/M/L): M
Evaluator's Estimate: _____

E. SESSION SUMMARY:

Individual has light brown hair or blonde hair that can be considered long. It seems as though the individual is trying to make a decision or is waiting for something to happen. Some type of motion/movement/action is trying to take place. Individual seems to be young of middle-aged. Sometimes it looked as though the individual was upside down. Wind and fast air motion was associated with the site. Clothing was loose.

C O N T R O L P E R S O N I N P U T

Control Person No. 101 Date Task Initiated _____
Date of Input _____ Suspense Date _____
Task/Target No. 92-133-92

Control Person Guess:

The figure in this picture is almost lost by the surroundings. There are high mountains, reddish in color, similar to those you would see in Colorado (Garden of the Gods). The mountains are not snow-covered and there are trees in the flatlands. The person is climbing one of the mountains. He looks so small and far away., You can see he is using a robe to scale the mountain. He is definitely in good physical shape.

EVALUATION RECORDS

PROFICIENCY PROJECTS

SOURCE	EVALUATION CATEGORIES (For Key elements)	PROFICIENCY COORDINATOR (DTI-S)	ANALYSIS SPECIALIST (DTI-S)	OUTSIDE REVIEWER ()	AVERAGE RATING
025	a. Concept/ Generic	10%	10%	10%	10
	b. Specifics/ Analytic	0%	0%	0%	0
049	a. Concept/ Generic	30%	30%	23%	27
	b. Specifics/ Analytic	15%	15%	10%	13
079	a. Concept/ Generic	20%	30%	8%	19
	b. Specifics/ Analytic	10%	20%	8%	12
	a. Concept/ Generic				
	b. Specifics/ Analytic				
	a. Concept/ Generic				
	b. Specifics/ Analytic				
CONTROL	a. Concept/ Generic				
	b. Specifics/ Analytic				
CONTROL 101	a. Concept/ Generic	5%	0%	0%	1
	b. Specifics/ Analytic	0%	0%	0%	0

TAB

CPYRGHT

Anne Kinnerup (below)
leads an exercise class at the Arizona Biltmore.



CONCEPTUAL ELEMENTS

ELEMENT	VALUE
1. Caucasian Female/Red Hair/Smiling	1
2. Sitting on Red Mat/One Leg Raised/ Pale White Outfit	1
3. Others in Mirror Background	.5

ANALYTICAL ELEMENTS

ELEMENTS	VALUE
1. Middle-Aged Instructor	1
2. Exercise Class/Students	1

SESSION INFORMATION

- A. TARGET DATA:
Task/Target No. : 02-134-P
Session No. : 01
- B. PERSONAL DATA:
Source No. : 025
Monitor's No. : N/A
Beacon/Sender No. : N/A
- C. SESSION DATA:
Date Task Received : 9 Dec 92
Session Date : 9 Dec 92
Start Time : 1:00
Stop Time : 2:00
Method Used : ERV
Aids/Distractions (PIs) : N/A
Pre-session Hunches (AVs) : N/A
Date Summary Returned : 9 Dec 92
- D. EVALUATION DATA:
Viewer's Estimate : N/A
Evaluator's Estimate : N/A
- E. SESSION SUMMARY

The target personality is a young female with dark hair, dark eyes and darkened skin. She is wearing drop pearl colored earrings which have some gold on them and a brightly colored red fabric. She is of foreign descent, pretty and ornately dressed for an occasion. Woods are in her environment and she is smiling and joyful.

SESSION INFORMATION

A. TARGET DATA:

Task/Target No. : 92-134-P
Session No. : 01

B. PERSONNEL DATA:

Source No. : 049
Monitor's No. : NA
Beacon/Sender No. : NA

C. SESSION DATA:

Date Task Received : 9 DEC 92
Session Date : "
Start Time : 1108
Stop Time : 1235
Method Used : CRV/ERV
Aids/Distractions (PIs) : Sinus surgery
Pre-session Hunches (AVs) : Something associated with animals
Date Summary Returned : 9 DEC 92

D. EVALUATION DATA:

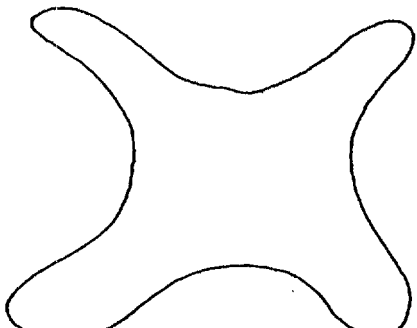
Viewer's Estimate :
Evaluator's Estimate :

E. SESSION SUMMARY:

The target is associated with soft vegetation and water which is in motion. There is a sense of energetics or energy associated here. The individual has a "hard" body and is wearing "soft" or flexible foot wear. There are objects of manipulated wood reminiscent of slats or beams.

The target is associated in some way with animals. I perceive fur and soft. There are metal objects of steel or iron present. These are somehow associated with the animal. I sense the concepts of "sea" or "ocean" and mammals associated with this. One of the animals is highly excited.

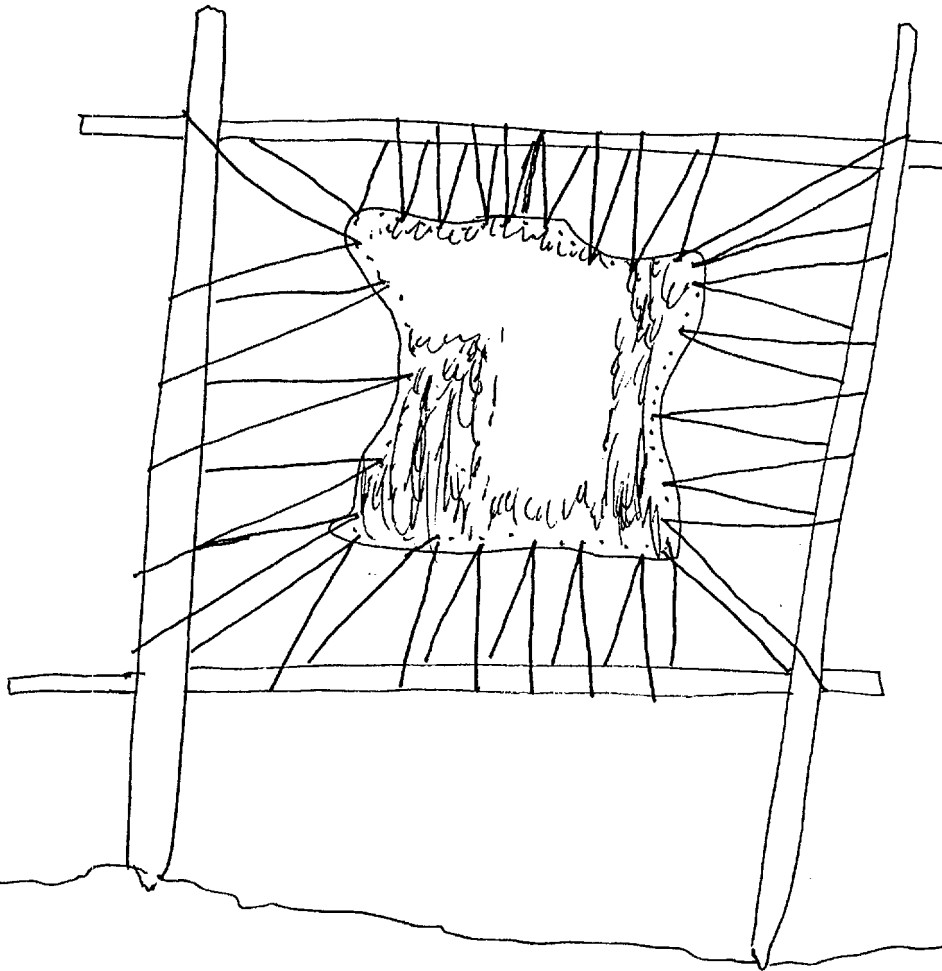
There is a 4-lobed object which is soft and used for "wearing". The concept of hardness sways me to feel that the target is a male.



R-4

U/I object; soft, used for wearing.

AV / AOL Sketch!! *



SESSION INFORMATION

- A. TARGET DATA: 9 Dec 92
Date: _____
Task/Target Number: 02 134 P
Session Number: ~~079 01~~
- B. PERSONNEL DATA:
Source Number: 079
Monitor Number: -
- C. SESSION DATA:
Session Start Time: 1300
Session Stop Time: 1400
Method Used: Solo
Distractions/Hunches: _____
- D. EVALUATION DATA:
Viewer Confidence (H/M/L): _____
Evaluator's Estimate: _____
- E. SESSION SUMMARY:

The individual was seen from the waist up. The individual was not smiling but the expression on the face was one of peace. The individual was wearing an ornament on the head. The individual was wearing white loose clothing. There was a gold triangular object associated with the individual. The individual was calm but yet there was something very powerful about the individual or the surroundings.

C O N T R O L P E R S O N I N P U T

Control Person No. 101 Date Task Initiated _____
Date of Input _____ Suspense Date _____
Task/Target No. 92-134-92 S

Control Person Guess:

There is a very large ship in this picture, probably a military ship.
There is a man standing on the deck staring out towards the horizon.
He is fairly tall and slender. There is a very serious look on his
face - a look of a person about to make a very important decision.

EVALUATION RECORDS

PROFICIENCY PROJECTS

SOURCE	EVALUATION CATEGORIES (For Key elements)	PROFICIENCY COORDINATOR (DTI-S)	ANALYSIS SPECIALIST (DTI-S)	OUTSIDE REVIEWER ()	AVERAGE RATING
025	a. Concept/ Generic	30%	55%	32%	39
	b. Specifics/ Analytic	10%	0%	0%	3
049	a. Concept/ Generic	5%	0%	8%	4
	b. Specifics/ Analytic	0%	0%	20%	6
079	a. Concept/ Generic	5%	15%	13%	11
	b. Specifics/ Analytic	0%	0%	10%	3
	a. Concept/ Generic				
	b. Specifics/ Analytic				
	a. Concept/ Generic				
	b. Specifics/ Analytic				
CONTROL	a. Concept/ Generic				
	b. Specifics/ Analytic				
CONTROL 101	a. Concept/ Generic	0%	0%	0%	0
	b. Specifics/ Analytic	0%	0%	0%	0

TAB



With style and Gemütlichkeit, a driver guides his team at the

Volkfest in Kelheim, West Germany

CONCEPTUAL ELEMENTS

ELEMENT	VALUE
1. Caucasian Male/Moustache/Brown Hat	1
2. Holding Objects/Riding/Animal	1
3. Others in Background	.5

ANALYTICAL ELEMENTS

ELEMENTS	VALUE
1. Middle-Aged Driver	1
2. Horses/Carriages/Show	1

SESSION INFORMATION

- A. TARGET DATA:
Task/Target No. :92-135-P
Session No. :01
- B. PERSONAL DATA:
Source No. :025
Monitor's No. :N/A
Beacon/Sender No. :N/A
- C. SESSION DATA:
Date Task Received :14 Dec 92
Session Date :14 Dec 92
Start Time :2:00
Stop Time :3:00
Method Used :ERV
Aids/Distractions (Pis) :N/A
Pre-session Hunches (Avs) :N/A
Date Summary Returned :14 Dec 92
- D. EVALUATION DATA:
Viewer's Estimate :N/A
Evaluator's Estimate :
- E. SESSION SUMMARY

The target personality is a female who is in a light colored casual shirt. She is going on a woman's character which is righteous and related to doing good for other people. She is giving, kind and busy doing some kind of work. The personality is gifted, at peace and productive in her day. She or others may be ill and require healing. This personality is communicating some type of message through her very existence to people. She is delicate or even fragile in stature. Literature is associated with this target.

SESSION INFORMATION

A. TARGET DATA:

Task/Target No. : 92-135-P
Session No. : 01

B. PERSONNEL DATA:

Source No. : 049
Monitor's No. : NA
Beacon/Sender No. : NA

C. SESSION DATA:

Date Task Received : 14 DEC 92 (on leave)
Session Date : 17 DEC 92
Start Time : 0910
Stop Time : 0935
Method Used : CRV
Aids/Distractions (PIs) : Impending surgery, etc.
Pre-session Hunches (AVs) : None
Date Summary Returned : 17 DEC 92

D. EVALUATION DATA:

Viewer's Estimate :
Evaluator's Estimate :

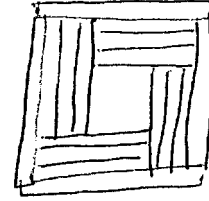
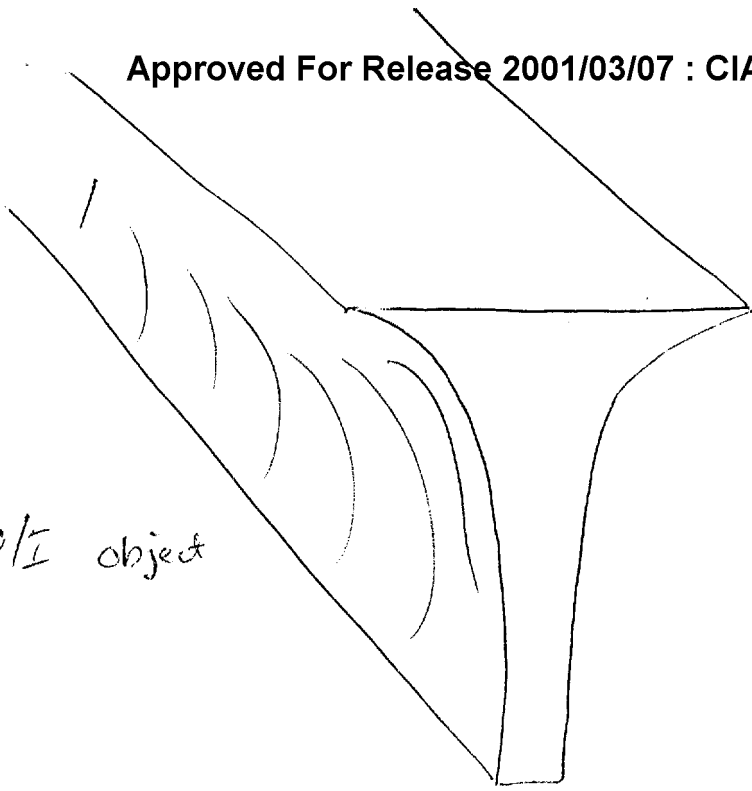
E. SESSION SUMMARY:

The target is involved with as aspect of entertainment. They are a younger male involved with a performance in front of a crowd. There is a pronounced circular, revolving or spinning motion associated with his activity. There is a feeling of flowing water nearby reminiscent of a "watering" system. There is the concept of gardens or manicured surroundings. This area is flat, green and "prepared". It feels like there are others in the background.

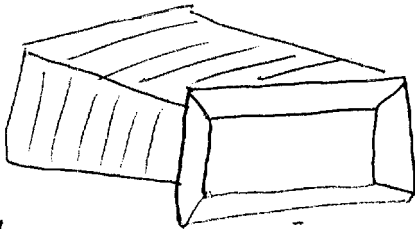
The target's clothing is covered with a light substance. This gives the appearance of sparkling. There is a certain amount of danger associated with the target's activity. This activity has required a lot of training. There is a bright light, or lite, area which gives the effect of highlighting the individual. There is a jerky, up-an-down motion also present. The activity is associated with the concept of a "wild ride".

There are solid, angular features which are triangular, pointed and fluted. A wallet and a watch are apparent. There is the concept of "riding while standing". This is reminiscent of riding a wheeled vehicle. Drums and/or drumming is in the background. There is the concept that someone is "looking" through something during this activity.

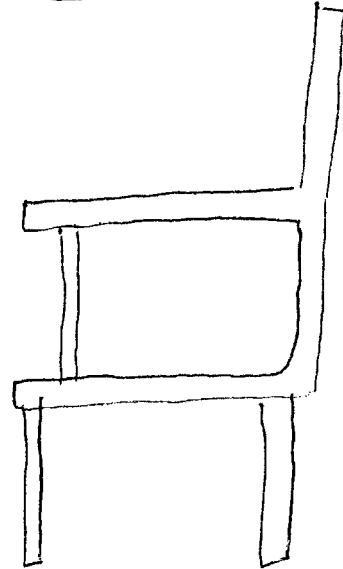
U/I object



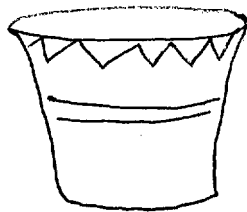
Flat; associated w/ "weedy" feeling.



Associated with looking "through" something.



U/I object



Associated w/ drum
?/or drumming

SESSION INFORMATION

- A. TARGET DATA:
Date: 14 Dec 92
Task/Target Number: 92 135 P
Session Number: 01
- B. PERSONNEL DATA:
Source Number: 079
Monitor Number: —
- C. SESSION DATA:
Session Start Time: 1330
Session Stop Time: 1400
Method Used: Su/0
Distractions/Hunches: —
- D. EVALUATION DATA:
Viewer Confidence (H/M/L): —
Evaluator's Estimate: —
- E. SESSION SUMMARY:

Individual is standing or sitting. The individual seems to be middle-aged. The individual has a serious look and could be thinking and could be looking downward. Brown is associated with the individual but also a bright purple or blue is also seen. There may be a circular object(s) that the individual is holding. The individual's arms are stretched out. The individual has brown or dark brown hair.

C O N T R O L P E R S O N I N P U T

Control Person No. 101 Date Task Initiated _____
Date of Input _____ Suspense Date _____
Task/Target No. 92-135-92

Control Person Guess:

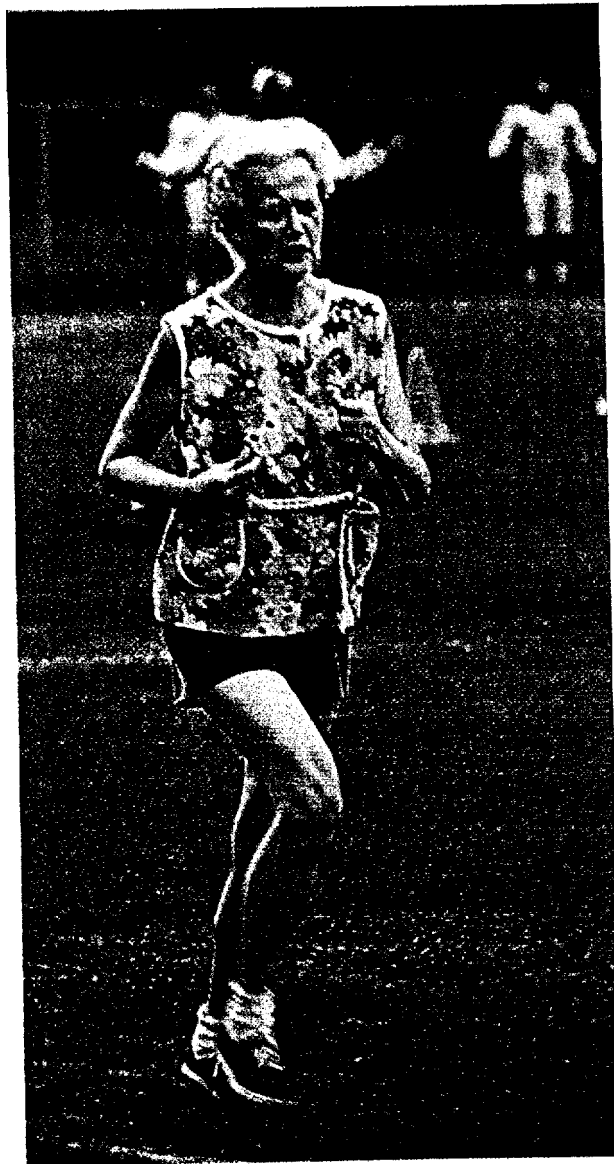
The area is very hot, dry and barren. All you can see for miles and miles is desert and sand. There is a figure in the middle of all this sand walking towards the horizon. The figure is dressed in all white with a covering on his head. His face is burned from the sun. He has a small knapsack in his hands.

EVALUATION RECORDS
PROFICIENCY PROJECTS

SOURCE	EVALUATION CATEGORIES (For Key elements)	PROFICIENCY COORDINATOR (DTI-S)	ANALYSIS SPECIALIST (DTI-S)	OUTSIDE REVIEWER ()	AVERAGE RATING
025	a. Concept/ Generic	5%	0%	0%	1
	----- b. Specifics/ Analytic	0%	0%	0%	0
049	a. Concept/ Generic	50%	50%	65%	55
	----- b. Specifics/ Analytic	30%	40%	71%	47
079	a. Concept/ Generic	30%	40%	30%	33
	----- b. Specifics/ Analytic	20%	30%	45%	31
	a. Concept/ Generic				
	----- b. Specifics/ Analytic				
	a. Concept/ Generic				
	----- b. Specifics/ Analytic				
CONTROL	a. Concept/ Generic				
	----- b. Specifics/ Analytic				
CONTROL 101	a. Concept/ Generic	0%	0%	0%	0
	----- b. Specifics/ Analytic	0%	0%	0%	0

TAB

CPYRGHT



Huffing and puffing for science, Flora Ward helps University of Toronto researchers study the effects of exercise on the elderly. A secretary at the 45,000-student school for 39 years, she faithfully runs four days a week, even though retired. Preliminary findings indicate that reasonable exercise adds to the years of useful physical activity.

CONCEPTUAL ELEMENTS

ELEMENT	VALUE
1. White-Haired Caucasian Woman	1
2. Standing/Moving	1
3. Decorative Blouse	1

ANALYTICAL ELEMENTS

ELEMENTS	VALUE
1. Elderly	1
2. Athletics/Exercise/Jogging	1

SESSION INFORMATION

- A. TARGET DATA:
 Task/Target No. :92-123-P
 Session No. :01
- B. PERSONAL DATA:
 Source No. :025
 Monitor's No. :N/A
 Beacon/Sender No. :N/A
- C. SESSION DATA:
 Date Task Received :30 Oct 92
 Session Date :30 Oct 92
 Start Time :1:00
 Stop Time :2:00
 Method Used :ERV
 Aids/Distractions (PIs) :N/A
 Pre-session Hunches (AVs) :N/A
 Date Summary Returned :30 Oct 92
- D. EVALUATION DATA:
 Viewer's Estimate :N/A
 Evaluator's Estimate :N/A
- E. SESSION SUMMARY

Some kind of light and a checkering effect is in the picture. This target is language related. More than one person is featured in the target. The target personality is male and is an individual who is looked at by many other people. Care is taken with this person who has something he is playing with in his hands. A round object is present which creates auditory sound and there is a musical element to this target. Brown, black, and soft reds are shown. This target is relaxing, comforting and enjoyable. It could put one to sleep because it causes serenity. In other words, what the target personality is doing is calming to the spirit.

SESSION INFORMATION

A. TARGET DATA:
Task/Target No. : 92-123-P
Session No. : 01

B. PERSONNEL DATA:
Source No. : 049
Monitor's No. : NA
Beacon/Sender No. : ~~NA~~ M.S.

C. SESSION DATA:
Date Task Received : 30 OCT 92
Session Date : "
Start Time : 1447
Stop Time : 1540
Method Used : ERV
Aids/Distractions (PIs) : Sinus infection
Pre-session Hunches (AVs) : None
Date Summary Returned : 30 OCT 92

D. EVALUATION DATA:
Viewer's Estimate :
Evaluator's Estimate :

E. SESSION SUMMARY:

No results. The new sinus medication I am on knocks me out.

SESSION INFORMATION

- A. TARGET DATA:
Date: 30 Oct 92
Task/Target Number: 92 103P
Session Number: 01
- B. PERSONNEL DATA:
Source Number: 079
Monitor Number: _____
- C. SESSION DATA:
Session Start Time: 1400
Session Stop Time: 1500
Method Used: Self
Distractions/Hunches: _____
- D. EVALUATION DATA:
Viewer Confidence (H/M/L): _____
Evaluator's Estimate: _____
- E. SESSION SUMMARY:

The individual was standing. The individual was tall and slender and seemed to have wide shoulders. The individual was wearing something around the neck area. The individual was wearing dark clothes. The individual was wearing a big dark garment (black or purple shade) that could flap in the back. The individual's mouth may be open because I could see white teeth. A feeling of "sharpness" came to me. Animals could somehow be associated with the individual.

long slender object - could be associated with individual.

C O N T R O L P E R S O N I N P U T

Control Person No. 101 Date Task Initiated _____
Date of Input _____ Suspense Date _____
Task/Target No. 92-123-P

Control Person Guess:

You get a feeling of power or great emotion in this picture. The surroundings are very old and there are many people associated with the main person in this picture. This person (a male) has total control of the crowd. He is wearing a long flowing robe. He is older and could be a member of a religious group. The person could be a minister or the Pope.

EVALUATION RECORDS
PROFICIENCY PROJECTS

SOURCE	EVALUATION CATEGORIES (For Key elements)	PROFICIENCY COORDINATOR (DTI-S)	ANALYSIS SPECIALIST (DTI-S)	OUTSIDE REVIEWER ()	AVERAGE RATING
025	a. Concept/ Generic	1%	0%	0%	0
	b. Specifics/ Analytic	0%	0%	0%	0
049	a. Concept/ Generic	-----	-----	-----	-----
	b. Specifics/ Analytic	-----	-----	-----	-----
079	a. Concept/ Generic	1%	15%	10%	8
	b. Specifics/ Analytic	0%	0%	0%	0
	a. Concept/ Generic	-----	-----	-----	-----
	b. Specifics/ Analytic	-----	-----	-----	-----
	a. Concept/ Generic	-----	-----	-----	-----
	b. Specifics/ Analytic	-----	-----	-----	-----
CONTROL 313	a. Concept/ Generic	-----	-----	-----	-----
	b. Specifics/ Analytic	-----	-----	-----	-----
CONTROL 101	a. Concept/ Generic	0%	0%	0%	0
	b. Specifics/ Analytic	0%	0%	0%	0