

SECRET

KEY INTELLIGENCE TASK (91007)

(S/NF/LIMDIS) Describe activities and purpose of target area; provide backup sketches. [REDACTED]

SG1B

(S/NF/LIMDIS) Source A Assessment. (DOI: 23 JAN 91):

a. Site function is associated with unusual emanations and has numerous automatic functions:

- High technology diagnostics.
- Emanations may cause physical maladies (i.e., nausea, headaches).
- Flashes of blue are relevant.

b. Object/equipment associations include:

- Large pyramid or peaked shapes (Figure 1), with humming sounds and spinning motion.
- May be flaps on the object.
- Bars and disks are also present, with rings (Figure 2).
- Many disarrayed thin elongated objects are present.

c. Overall area is flat with features incorporated into very rugged terrain.

(S/NF/LIMDIS) Source B Assessment. (DOI: 23 JAN 91):

a. Function is associated with storage and loading, possibly with underground aspects:

- May have chemical munitions.
- Shaking and vibration motions are associated, with some circular motion.
- Ceiling may have a sliding/opening capability, and may be made of very thin metal.

b. Main object(s) have missile-like shapes.

c. Various smaller objects have fan-type shapes (Figure 3).

LIMITED DISTRIBUTION

**CLASSIFIED BY DT
DECLASSIFY ON OADR**

NOT RELEASABLE TO FOREIGN NATIONALS

**WARNING NOTICE — INTELLIGENCE
SOURCES OR METHODS INVOLVED**

SECRET

Appendix C

(S/NF/LIMDIS) Source C Assessment. (DOI: 23 JAN 91):

a. Main function seems to be related to mines:

- Possibly mine assembly, mine/staging deployment.
- Mines seem to be of a shallow surface type.

b. Main site area is heavily dependent on a river or some type of water supply, though it is not near a river.

- Area may have a natural mining function or once was a mineral mine.
- Some association to "mile" or "nile."
- Area is in a Mideast country.

A. Are the assessments accurate? (circle response)

<u>Source A</u>	<u>Source B</u>	<u>Source C</u>
(1) Yes (true)	(1)	(1)
(2) May be true	(2)	(2)
(3) Possibly true	(3)	(3)
(4) No	(4)	(4)
(5) Possibly not true	(5)	(5)
(6) Unsure	(6)	(6)

B. What is value of the Source(s)' assessments: (circle response)

<u>Source A</u>	<u>Source B</u>	<u>Source C</u>
(1) Major significance	(1)	(1)
(2) High value	(2)	(2)
(3) Of value	(3)	(3)
(4) Low value	(4)	(4)
(5) No value	(5)	(5)

LIMITED DISTRIBUTION

NOT RELEASABLE TO FOREIGN NATIONALS

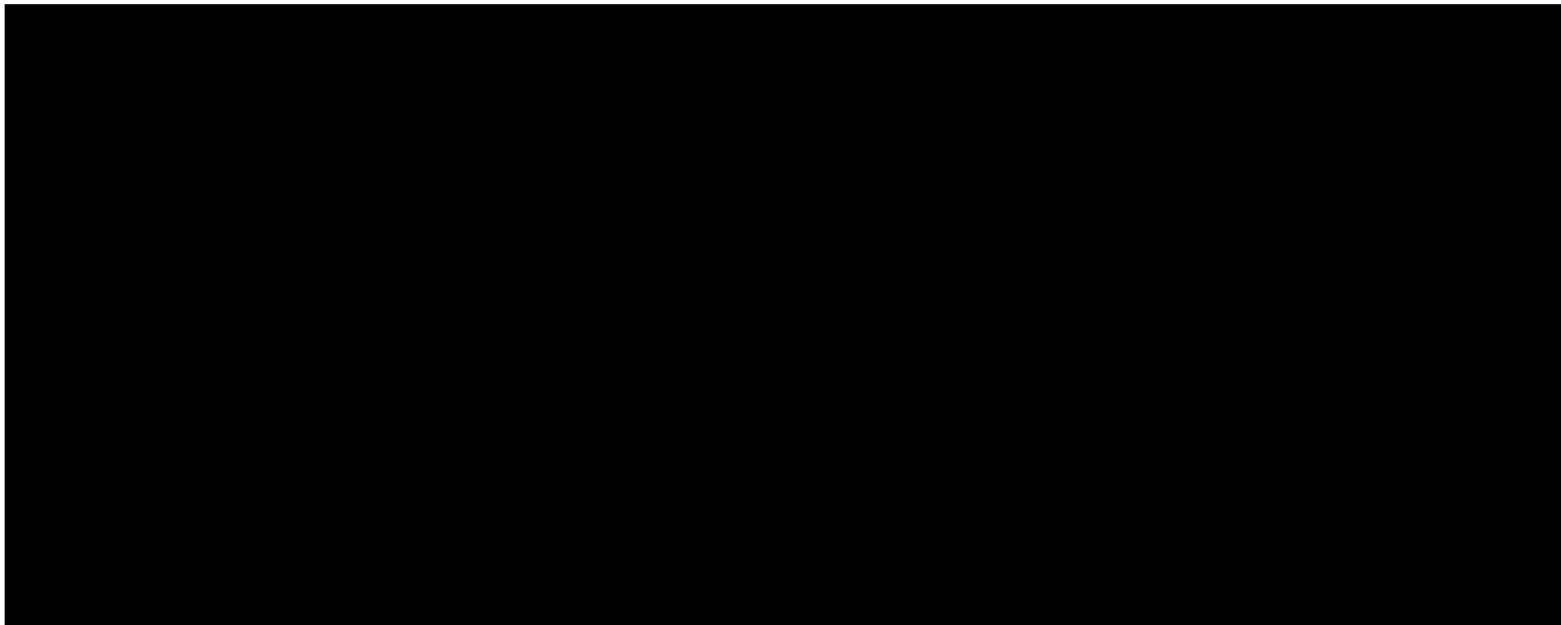
WARNING NOTICE — INTELLIGENCE SOURCES OR METHODS INVOLVED

SECRET

SECRET

C. Evaluation of Source Information. Provide rationale/analysis which led to your evaluation of responses provided above. Include confirmatory/new confirmatory data and whether collection requirements are currently validated/ tasked to either obtain or verify such data. Please provide your written evaluation by Source.

SG1A



SG1J



D. NAME

DB46 x 2045 (S)
OFFICE/PHONE NUMBER

4 Enclosures

- 1. Photographs (S/NF/WN) 1 Cy
- 2. Figure 1 (U) 1 Cy
- 3. Figure 2 (U) 1 Cy
- 4. Figure 3 (U) 1 Cy

LIMITED DISTRIBUTION

NOT RELEASABLE TO FOREIGN NATIONALS

WARNING NOTICE — INTELLIGENCE
SOURCES OR METHODS INVOLVED

SECRET

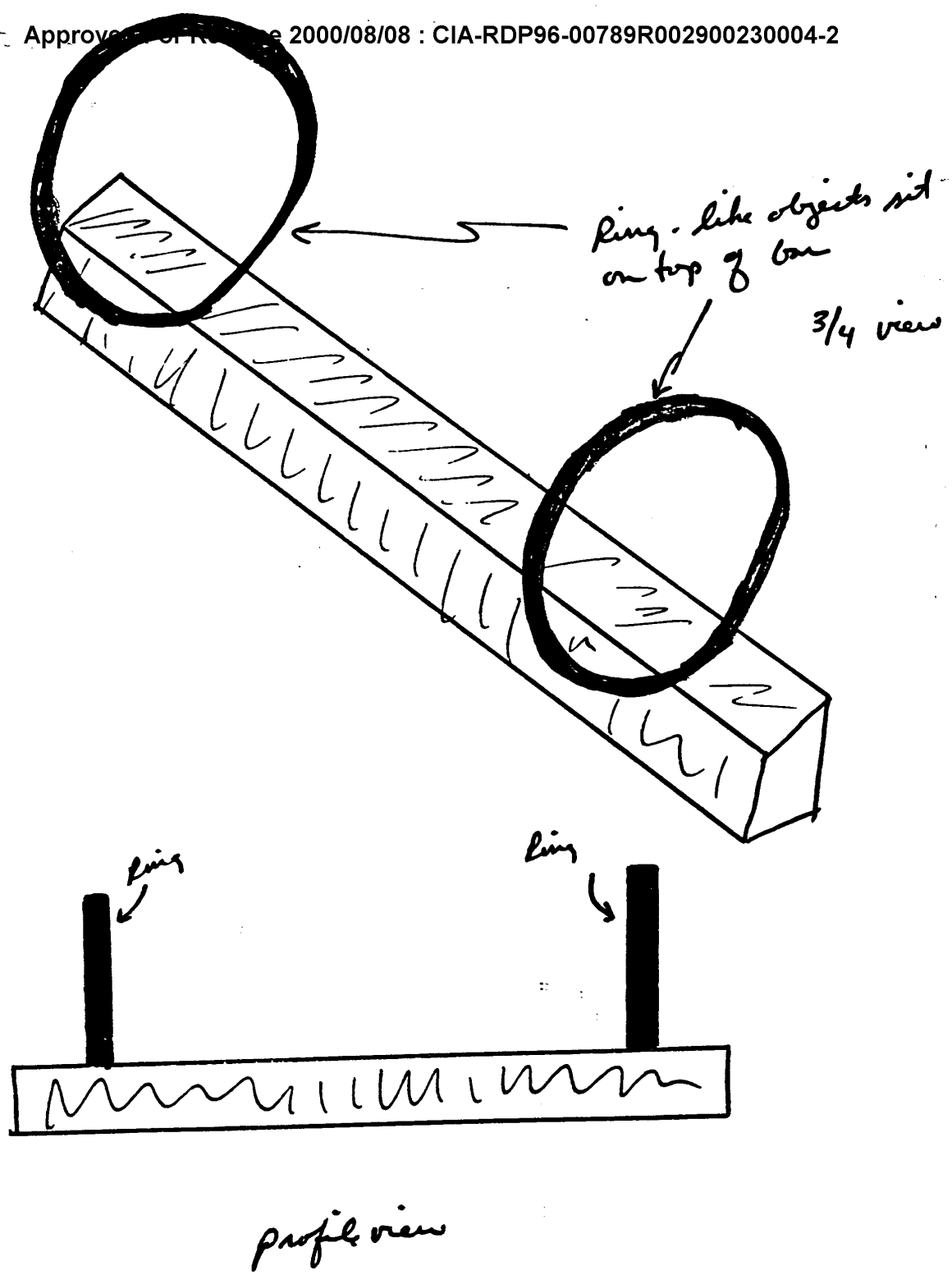
Peaked object which contains a loud humming noise. Sides are not solid but seem to flap or move

muzzled here

indistinct here

interior spinning motion w/ an associated thrusting or pushing out of something

i FIG 1 2a



ii FIG 2. 25

(Different object)
Rounded object
Shiny in middle
3-4 Blade-like shapes
Around it

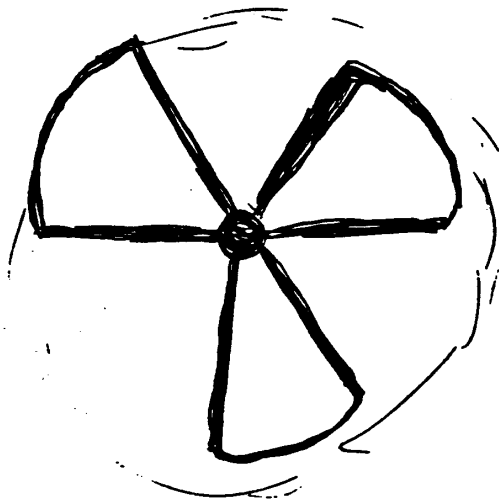
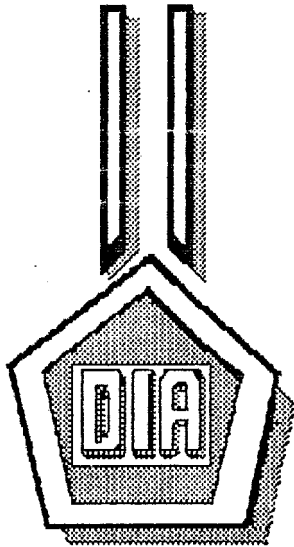


FIG 3
3a

SECRET

DT-S- 1024-SL



**DEFENSE
INTELLIGENCE
AGENCY**

SUMMARY REPORT (U)

PROJECT 91007

23 January 1991

NOFORN

SECRET

LIMDIS

SECRET Noform

PROJECT 91007

REPRODUCTION REQUIRES APPROVAL OF
ORIGINATOR OR HIGHER DOD AUTHORITY.
FURTHER DISSEMINATION ONLY AS DIRECTED
BY DT OR HIGHER DOD AUTHORITY.

23 JANUARY 1991

CLASSIFIED BY: DIA/DT
DECLASSIFY ON: OADR

SECRET Noform

PROJECT 91007

23 Jan 91

SUMMARY

1. (S/NF/LIMDIS) TARGETING DATA: A sealed envelope of the target site was provided to DT-S with task instructions attached. This sealed envelope was not opened and was returned to DT. The attached instructions were followed.

2. (U) TASK:

(S/NF/LIMDIS) Describe activities and purpose of target area; provide backup sketches.

3. (U) RESPONSES:

a. (U) SOURCE 049:

(1) (U) DATE OF INFORMATION (DOI): 23 Jan 91.

(2) (S/NF/LIMDIS) DATA SUMMARY:

- Site function is associated with unusual emanations and has numerous automatic functions:

o High technology diagnostics.

o Emanations may cause physical maladies (i.e., nausea, headaches).

o Flashes of blue are relevant.

- Object/equipment associations include:

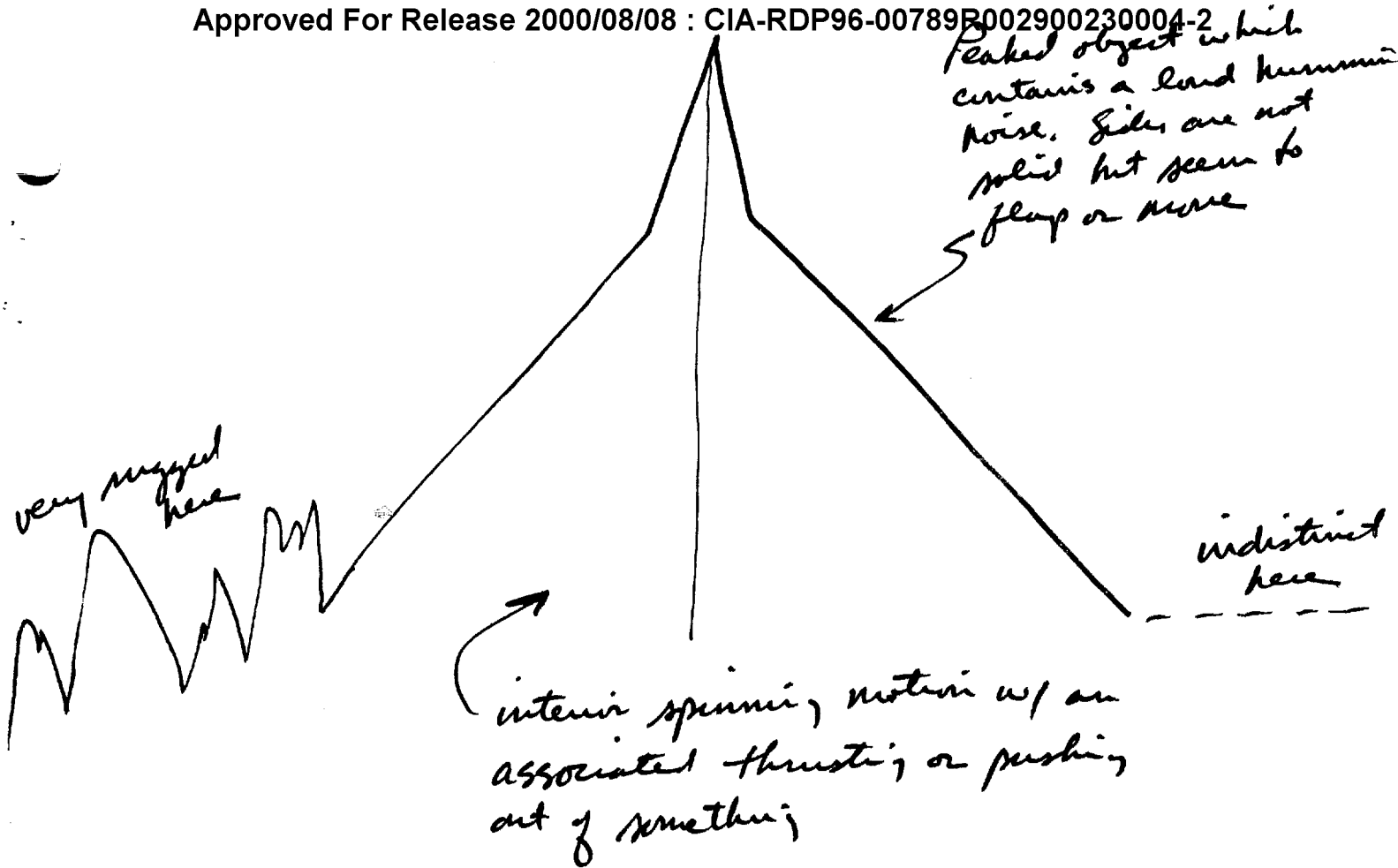
o Large pyramid or peaked shapes (FIG 1), with humming sounds and spinning motion.

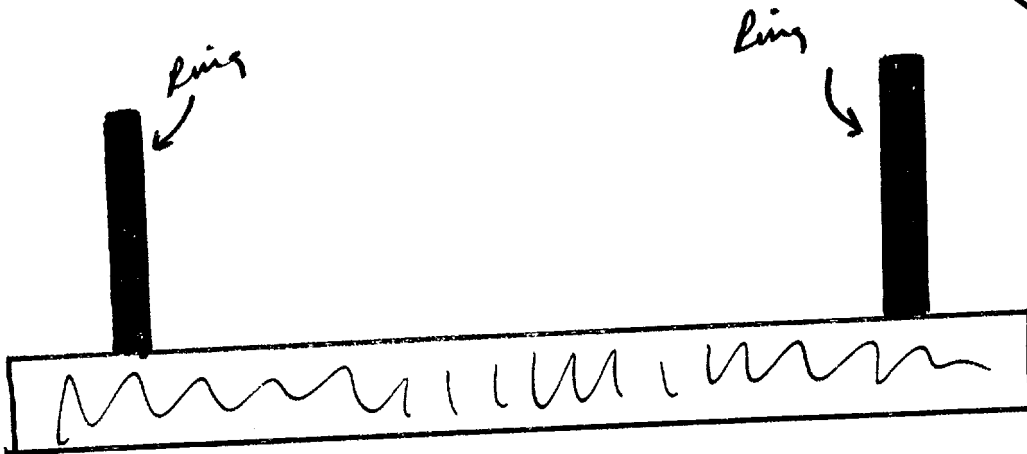
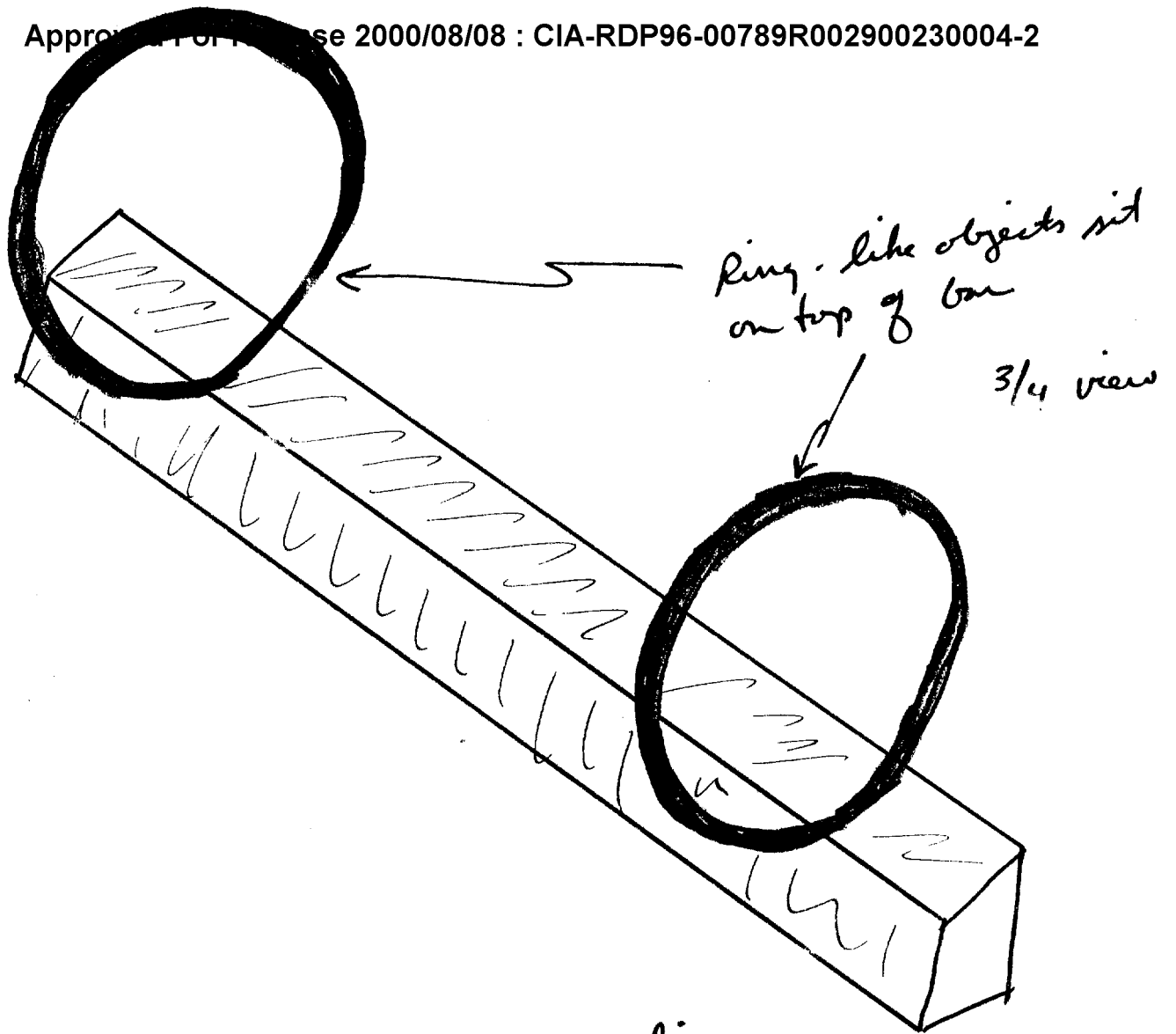
o May be flaps on the object.

o Bars and disks are also present, with rings (FIG 2).

o Many disarrayed thin elongated objects are present.

- Overall area is flat with features incorporated into very rugged terrain.





profile view

b. (U) SOURCE 052:

(1) (U) DOI: 23 Jan 91.

(2) (S/NF/LIMDIS) DATA SUMMARY:

- Function is associated with storage and loading, possibly with underground aspects:
 - o May have chemical munitions.
 - o Shaking and vibration motions are associated, with some circular motion.
 - o Ceiling may have a sliding/opening capability, and may be made of very thin metal.
- Main object(s) have missile-like shapes.
- Various smaller objects have fan type shapes (FIG 3).

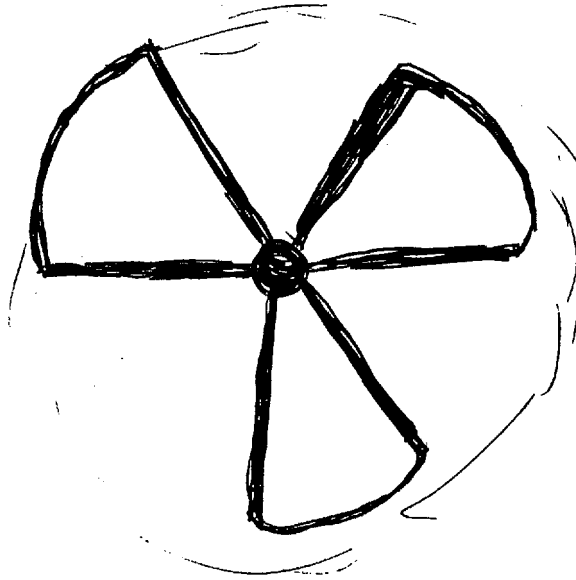
c. SOURCE 079:

(1) (U) DOI: 23 Jan 91

(2) (S/NF/LIMDIS) DATA SUMMARY:

- Main function seems to be related to mines:
 - o Possibly mine assembly, mine staging/deployment.
 - o Mines seem to be of a shallow surface type.
- Main site area is heavily dependent on a river or some type of water supply, though it is not near a river.
 - o Area may have a natural mining function or once was a mineral mine.
 - o Some association to "mile" or "nile".
 - o Area is in a Mid East country.

(Different object)
Rounded object
Shiny in middle
3-4 Blade-like shapes
Around it



4. (U) REMARKS:

a. (S/NF) Main sense of area is that it is remote, and may be involved in some sort of munitions storage/staging activity.

b. (U) This target can be reexamined to focus in on main aspects of interest.

5. (U) ADDENDUM: This section includes data provided by an additional source after the initial report was completed:

a. (U) SOURCE 018: (DOI: 24 Jan 91).

b. (S/NF/LIMDIS) DATA SUMMARY:

- Site may be a shallow-buried missile launch facility.
- Site appears to have one-story cinder block structures with sloping walls that have earth-cover to blend in with terrain:
 - o Surrounding area has natural looking indentations.
 - o There seem to be thin translucent panels to the walls.
 - o Long pointed cylinders (probably missiles) may be inside the buildings.
 - o Possible missiles launched from within the building "break through" the translucent panels.
- Front ends of the cylinders seem to have a compressed mixture with a sticky, rubbery texture that is probably a high energy explosive.