

Newspr's: use "4 colors": Red, Blue, Green, Yellow

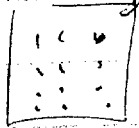
~~A~~

R . B . G . Y

Develop code, ~~and an~~

R:	R+R	B+R	G+R	Y+R
B:	R+B	B+B	G+B	Y+B
G:	R+G	B+G	G+G	Y+G
Y:	R+Y	B+Y	G+Y	Y+Y

Do 2 Sums:  
Get Pass, m  
approx



4, 16,

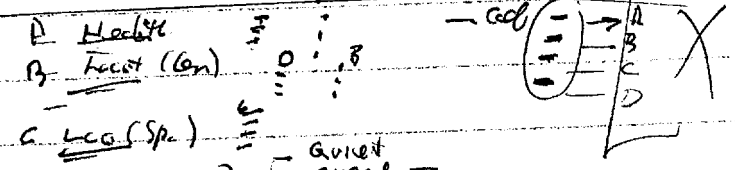
From 4 bits to 16... when double

Set of 16 messages: "4x4" de two ir a 1600

- Redist?
  - max 166 RR?
- |   |   |   |    |    |
|---|---|---|----|----|
| 1 | 4 | 7 | 10 | 13 |
| 2 | 5 | 8 | 11 | 14 |
| 3 | 6 | 9 | 12 | 15 |
- (16) →

what of trips?

16 mess. 4 groups of 4.



- A Habit
- B Forest (Gen)
- C LCA (Sp)
- D sounds ( )

Guinet  
RURAL  
CITY  
INDUST.

Do Set of Red aspects

Roddy

- AIRPORT nearby
- RR nearby
- Bushy areas
- RMA Area

1. Prepare color cards :

- color on both sides ( : magic marker  
: INK, Pencil  
: etc  
+ ERIST. color code )
- Prepare 3 x N
- place in envelope (double seal)
- shuffle
-