

SESSION TASKING SHEET

Source No. 049
Date Task Initiated 3 FEB '92
Suspense Date 1500 4 FEB '92

Task/Targeting No.: 92-1

~~Method~~ Method/Technique: method of choice.

Target Data Desired:

1. DESCRIBE KEY TARGET FEATURES (include forms, shapes, spatial aspects, color, motion/dynamics):

- Emphasize the following: _____
- Do the following perspectives:
 - Ground-level
 - Overview
 - Other: _____

2. IDENTIFY KEY TARGET CONTENT (include meaning, purpose, function, nature of activity, type/nature of people, if present):

- Emphasize the following: _____

3. IF PERSONALITY, DESCRIBE: _____

✓ 4. OTHER: ~~(see attached)~~ Describe the target.

5. ADDITIONAL GUIDANCE: (see attached)

*This is a proficiency testing target.
Optional Coordinates: 314956/416021*

SESSION INFORMATION

- A. TARGET DATA:
Task/Target No. : 049
Session No. : 01
- B. PERSONNEL DATA:
Source No. : 049
Monitor's No. : N/A
Beacon/Sender No. : N/A
- C. SESSION DATA:
Date Task Received : 3 Feb 92
Session Date : 4 Feb 92
Start Time : 1245
Stop Time : 1355
Method used : Solo ERV
Aids/Distractions (PIs) : Sinus problems
Pre-session hunches (AVs) : Large curving bars or rings
Date Summary Returned : 4 Feb 92 suspended in space.
- D. EVALUATION DATA:
Viewer's Estimate : (It was nice!) Medium
Evaluator's Estimate :
- E. SESSION SUMMARY:
See attached

Summary of Information

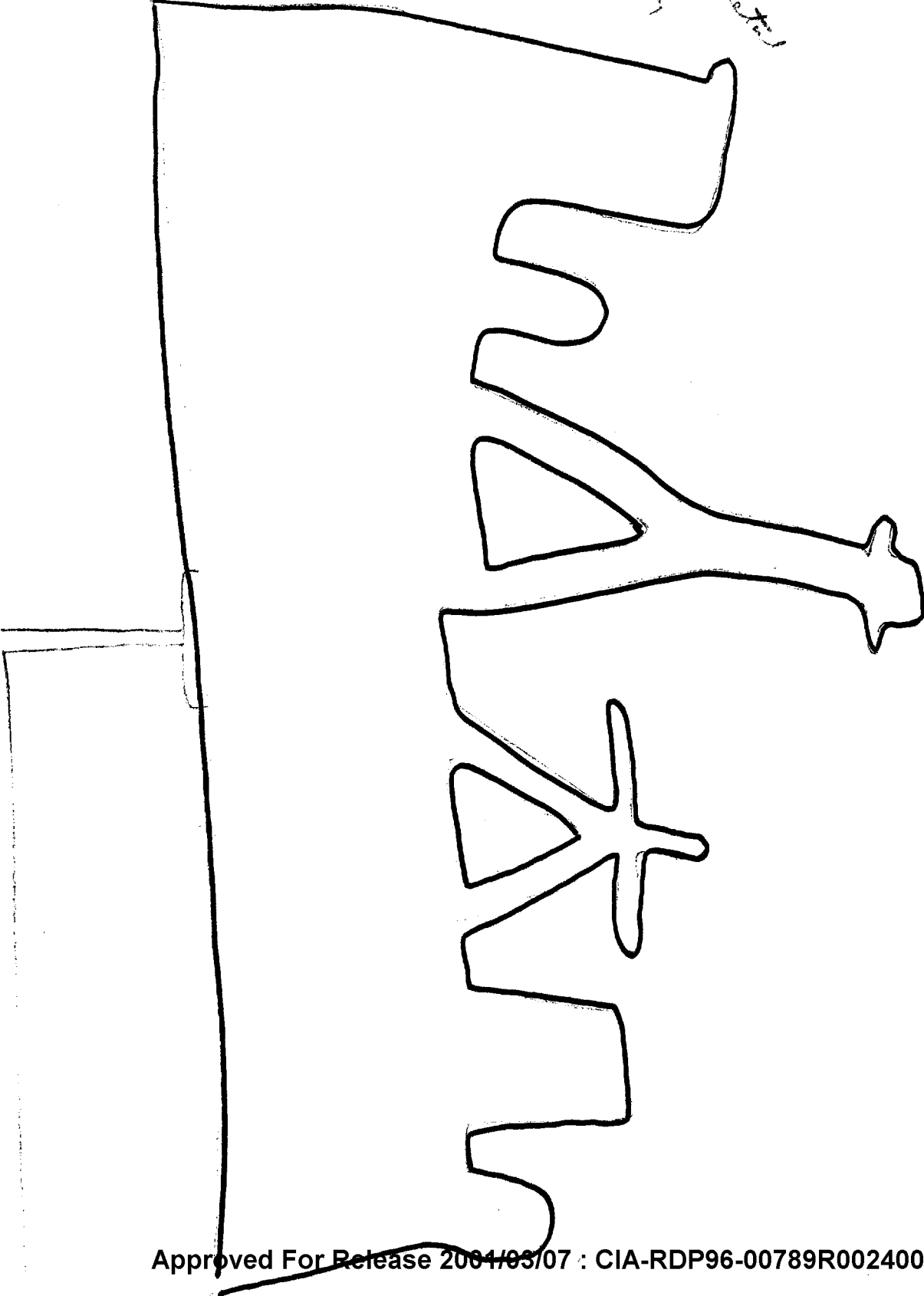
I initially felt as if I were perched on top of a gigantic evergreen tree with a spectacular view of the surrounding area in three directions. There were snow capped rolling hills and mountains to the front of me with less snow-covered terrain falling away on either side. There were large gaps or barren spaces within the terrain as if some of the ground cover had been removed.

I then perceived traveling extremely quickly through or by a number of small towns or villages. The movements of the people, action scenes and general procession of activities within these settlements were speeded up. Everything was happening in a much faster-than-normal speed. Much of the surrounding buildings and streets were a blur of white. There was a general feeling that these scenes were pioneer or colonial in nature. At any rate, older in content, style and feeling than contemporary settings.

There was an elaborately shaped object which appeared to be flat and made of a heavy metal. It's appearance was from the side. It appeared to be supported by an inappropriately small device or attachment to a much larger structure.

At this point I began to lapse into another set of scenes and scenery involving vast open plains. It was dry, dusty and the wind was kicking up. There was a wall of smoke or dust moving across horizon from left to right. This scene also had a feeling of some age to it; again, almost pioneer. I essentially spent the rest of the time just looking out over the expanses. The terrain was alternating colors of greens, beiges and browns. There was the occasional shrill of a large bird soared overhead. It felt quite isolated and serene.

*Plaid heavy material
cut out on
the back*



SESSION TASKING SHEET

Source No. ~~715~~

Date Task Initiated

3 FEB '92

Suspense Date

1500 4 FEB '92

Task/Targeting No.:

92-1

Method/Technique:

method of choice.

Target Data Desired:

1. DESCRIBE KEY TARGET FEATURES (include forms, shapes, spatial aspects, color, motion/dynamics):

- Emphasize the following: _____
- Do the following perspectives:
 - Ground-level
 - Overview
 - Other: _____

2. IDENTIFY KEY TARGET CONTENT (include meaning, purpose, function, nature of activity, type/nature of people, if present):

- Emphasize the following: _____

3. IF PERSONALITY, DESCRIBE:

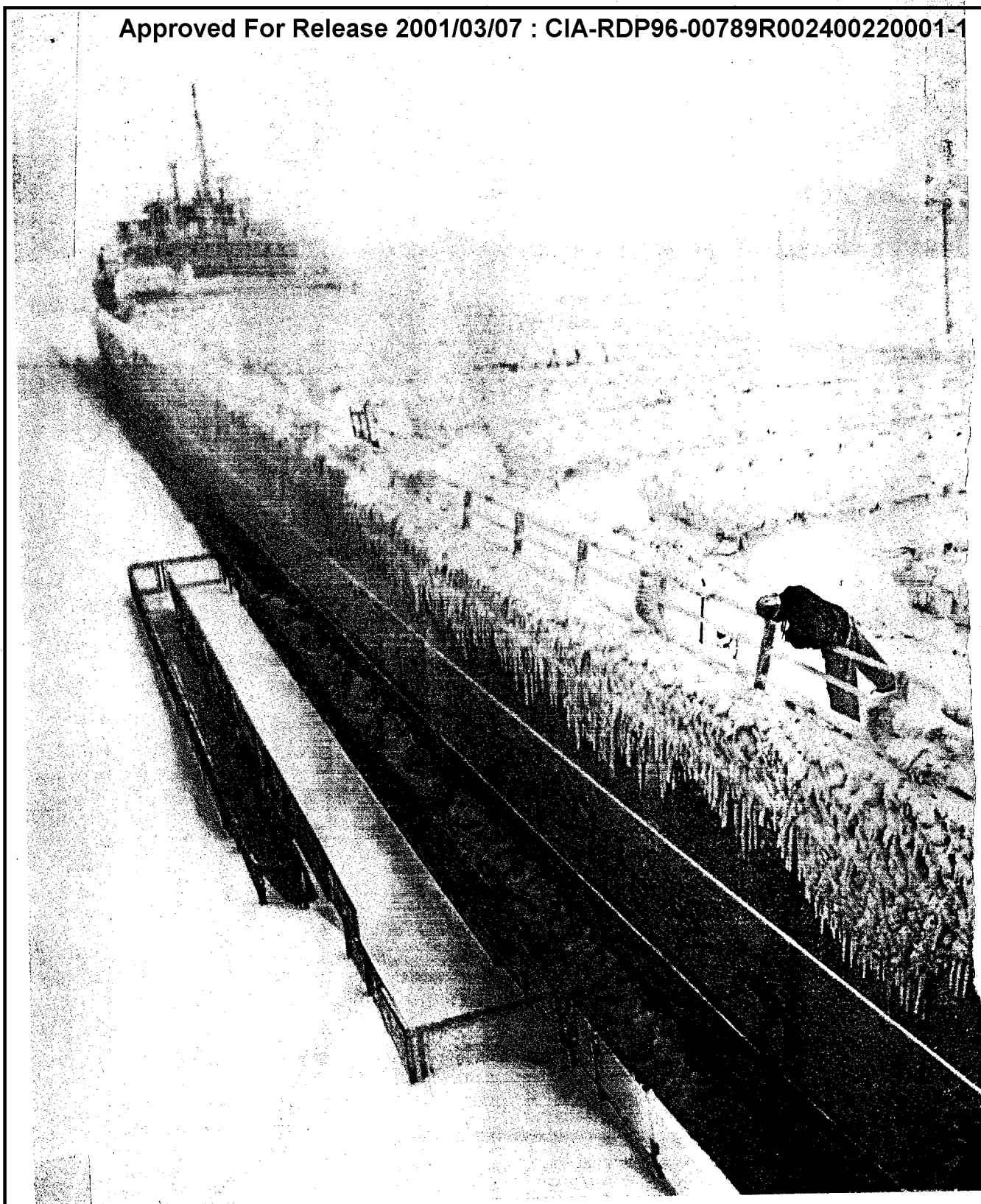
✓ 4. OTHER: ~~(see attached)~~ Describe the target.

5. ADDITIONAL GUIDANCE: (see attached)

This is a proficiency testing target

Optional Coordinates: 314956/416021

Approved For Release 2001/03/07 : CIA-RDP96-00789R002400220001-1



Iced to the gunnels, a huge laker loaded with iron ore for South Chicago steelworks squeaks through the Soo Locks in late January. Shipping normally freezes to a halt from mid-December to April. To help the region's wintertime economy, an experimental

Approved For Release 2001/03/07 : CIA-RDP96-00789R002400220001-1

A. Conceptual / Generic

| | Elements | Value |
|----|--------------------------------------|-------|
| 1. | Ice | 1 |
| 2. | Snow | 1 |
| 3. | Boys Boyancy | 1 |
| 4. | Structure / object / water interface | 1 |
| 5. | Long / Parallel lines | 15 ea |

B. Analytic / Labels

| | Key Elements | Value |
|----|-----------------------|-------|
| 1. | Ship / vessel / barge | 1 |
| 2. | Water "LOCKS" | 1 |
| 3. | Ice / snow | 1 |
| 4. | Predominant white | 1 |

019
Lemus concept of War.

| | |
|----|----|
| 1 | 1 |
| .5 | .5 |
| .5 | 1 |

12%

analytical 2.

10%

Conceptual

| Elements | Value | N |
|----------|-------|----|
| | 1 | 1 |
| | 15 | 15 |
| | 15 | 1 |

~~5/20/7~~

187
Analytic Lab.
59%

Conceptual

| Elements | Value | 049 | N |
|----------|-------|-----|---|
| 1 | | | 1 |
| 1 | | | 1 |
| | | | 1 |

15%

Analytic

| Elements | N |
|----------|---|
| 1 | 1 |
| 1 | 1 |
| 5 | 1 |
| 15 | 1 |

2070

Conceptual 052

1878
Analytic 200.

59%

| Conceptual | Value | N. |
|------------|-------|----|
| 049 | | |
| Elements | | |
| 1 | | 1 |
| 1 | | 1 |
| | | 1 |
| | | 1 |

| Analytic | N. |
|----------|----|
| 15% | |
| Elements | |
| 1 | 1 |
| 1 | 1 |
| .5 | 1 |
| 1.5 | 1 |

2070

| Conceptual | N. |
|------------|----|
| 052 | |
| Elements | |
| .5 | 1 |
| .5 | |
| 1 | |
| 1.5 | |
| .5 | |
| .5 | |
| 1.5 | |

40%

analysis