

✓ 049  
27 JAN 92

SESSION INFORMATION

A. TARGET DATA:

Task/Target No. : 92-5-L  
Session No. : 01

B. PERSONNEL DATA:

Source No. : 049  
Monitor's No. : NA  
Beacon/Sender No. : NA

C. SESSION DATA:

Date Task Received : 27 Jan 92  
Session Date : 27 Jan 92  
Start Time : 0915  
Stop Time : 1004  
Method used : Solo CRV  
Aids/Distractions (PIs) : Senses; job/career decisions  
Pre-session hunches (AVs) : Large, steam locomotive in rail yard.  
Date Summary Returned : 27 Jan 92

D. EVALUATION DATA:

Viewer's Estimate : medium  
Evaluator's Estimate :

E. SESSION SUMMARY:

(See attached)

97-5-L  
049  
27 JAN 92

Summary of Information

There is a general feeling of a downward flow of something at the target. There is also a sense of isolation associated with this site. This flow gains velocity with distance and results in a great power. The movement is circular and forward; an elongated spinning or spiraling. There is the concentration of something into one area. There is a radical shift or change in direction of this movement.

Two of the features present at the target are used for containment and channelling or directing the movement of something (see diagrams i(2) and i(4)).

There are large, flat squares that are blue-gray; they sit at several different angles. There is also a large disc/plate-like feature; its movement is a back and forth motion reminiscent of a rocking chair. There is also a half-ball shaped object.

There are large, wavy lines reminiscent of cables or wires. They are concentrated in one area and then spread or radiate out from this point. Large and tall manmade objects loom above some of the site; these features are more air than solid.

There is a stack of objects which resemble notebook binders, reminiscent of tech manuals.

There is a radical shift or change in direction of the flow of water or water related energy here. I experienced a sequence of sensory events occurring as follows: an abrupt change in direction; fast movement; slamming into something; feeling internal-to or contained within something; rushing and fast motion; a being swallowed sensation; turbulence; pushing movement; a sense of release; smooth flow; downward; opening up; calmness; easy; tranquil feeling; and soothing sound.

Essentially, the above sequence gave me the feeling of moving from an artificially produced existence into a more naturally occurring existence. My thoughts were: "What a ride!!! It sure is peaceful once you get out of the manmade or artificial situation. It feels like I'm gently floating downstream on a wide, flat river."

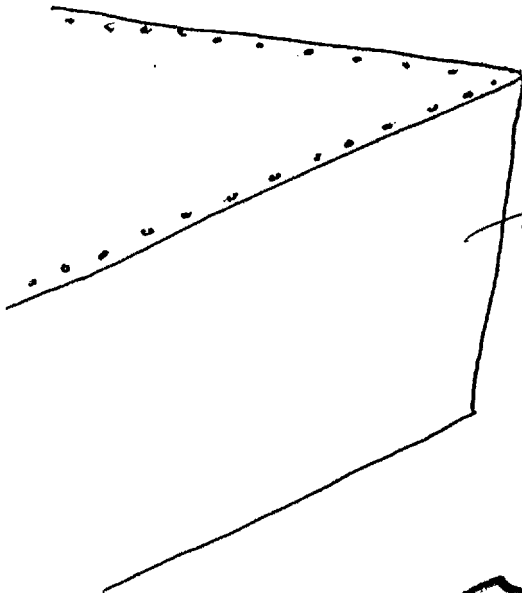
The diagrams on page ii depict the general gestalt(s) of the target.

\*\*\*My initial perception was that of a view of a very high dam or rock wall with a downward movement of something (water?) which increases with force and power with distance. The surrounding area is arid, dry and almost barren.\*\*\*

92-5-L

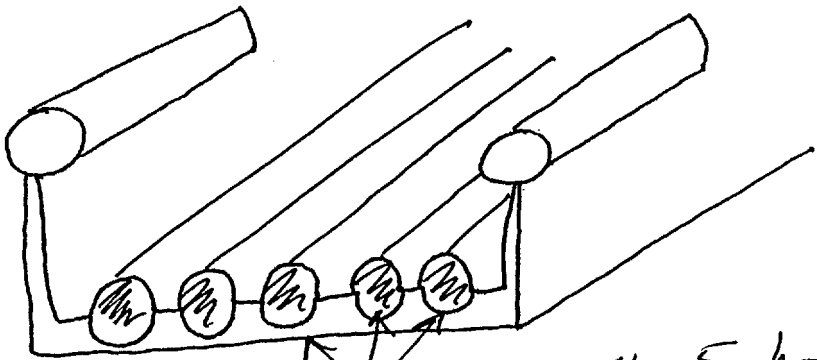
049

27 JAN '92



solid; yellowish color;  
surface is roughed-up

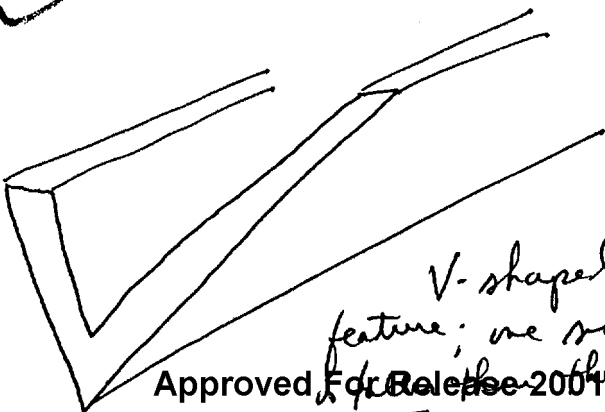
①  
②



series of 4 or 5 hollow objects;  
tube-like, are adjacent &  
solidly fixed to one another

This feature is  
used for contain-  
ment & movement;  
Concept of channeling  
or directing

③ ④



V-shaped  
feature; one side  
other

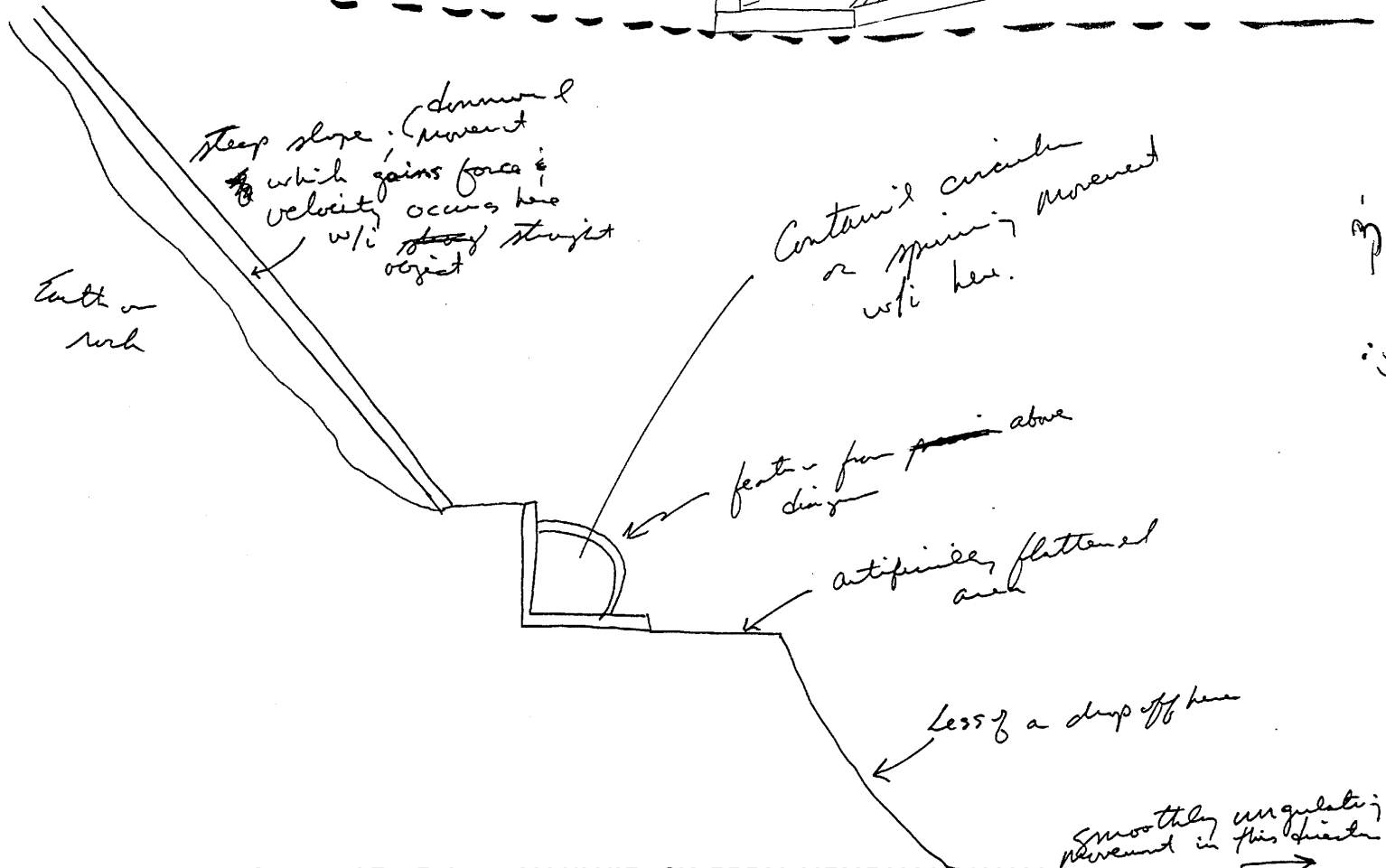
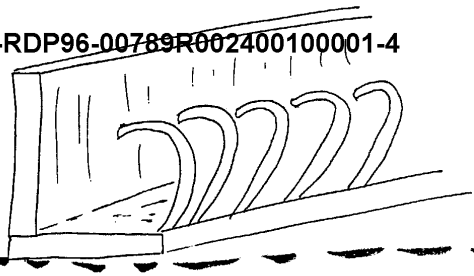


\* Used for  
containment/  
movement / direction

92-5-7  
049  
27 JAN 92

Series of adjacent curved  
are attached to both  
the vertical & horizontal  
surfaces of this feature.

Approved For Release 2001/03/07 : CIA-RDP96-00789R002400100001-4



Approved For Release 2001/03/07 : CIA-RDP96-00789R002400100001-4

SESSION TASKING SHEET

Source No. \_\_\_\_\_

Date Task Initiated 27 JAN '92

Suspense Date 1500 hrs, 27 JAN '92

Task/Targeting No.: 92-5-L

~~Method~~ Method/Technique: Method of Choice.

Target Data Desired:

1. DESCRIBE KEY TARGET FEATURES (include forms, shapes, spatial aspects, color, motion/dynamics):

- Emphasize the following: \_\_\_\_\_
- Do the following perspectives:
  - Ground-level
  - Overview
  - Other: \_\_\_\_\_

2. IDENTIFY KEY TARGET CONTENT (include meaning, purpose, function, nature of activity, type/nature of people, if present):

- Emphasize the following: \_\_\_\_\_

3. IF PERSONALITY, DESCRIBE: \_\_\_\_\_

✓ 4. OTHER: (~~see attached~~) Describe the target.

5. ADDITIONAL GUIDANCE: (~~see attached~~)

✓ Optional Coordinates: 514374/146934

