

9257
10 Feb 92
049

SESSION INFORMATION

A. TARGET DATA:

Date: 10 Feb 92
Task/Target Number: 92-7-6
Session Number: 01

B. PERSONNEL DATA:

✓ Source Number: 049
Monitor Number: N/A

C. SESSION DATA:

Session Start Time: 0930
Session Stop Time: 1038
Method Used: Solo CRV
Distractions/Hunches: simon infection / conglomerate of nonsense

D. EVALUATION DATA:

Viewer Confidence (H/M/L): Low
Evaluator's Estimate: _____

E. SESSION SUMMARY:

(see attached)

Summary of Information

The target is an area where there is a hard/soft interface; either 1) there is a water/sand interface or 2) there is a soft soil/hard soil (e.g., sand dunes/exposed sandstone) interface. It is warm and there is the concept of containment (e.g., a channeled or directing force) present.

There are sharply curved objects which are set upright, or on edge, into a surface. An old man is present. He is dressed in red sweat pants, a blue stocking hat and has old clothing on over his upper body. He has glasses and graying hair. He is sitting on an angled seat reminiscent of a bench and is leaning forward, intently viewing some busy or organized activity. Another individual is sitting and reading. He is also elderly, has a "light hearted" attitude towards his life and "enjoys little things".

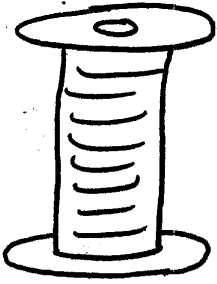
There are a number of girls dressed in identical plaid skirts who are meeting together for a common activity. They are associated with "school".

There is an area of countless parallel lines associated with a cutting and alignment activity. There are clunking and clamping also associated with this activity.

There is a crack or a tear between something in the background. It is reminiscent of the sun peeking between the clouds and the earth's horizon at sunset. This aspect of the target is cold. A small object is swinging or is suspended (see diagram i(a)).

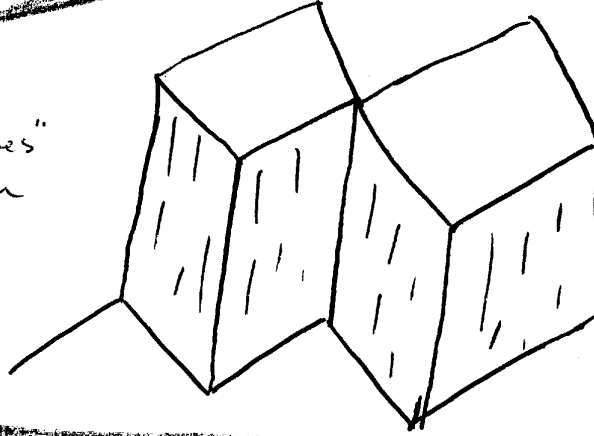
FOOTNOTE:

Early in the session, someone or something asked me if I wanted a "peek" of the future. My reply was "I don't want to see the future...You are not from the light...You are the Seducer(?)". A few moments later I had the sensation of being trapped in a vehicle while it (and I) were being compressed in a car compactor (like the ones you see in an auto junk yard).

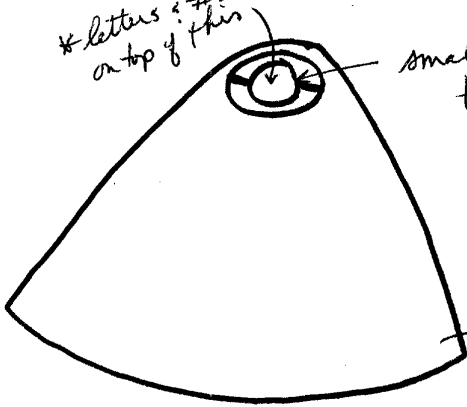


This object appears to be encased or encircled by a clear, transparent shell or sphere.

Series of "cubes" aligned corner to corner



* letters i #s on top of this



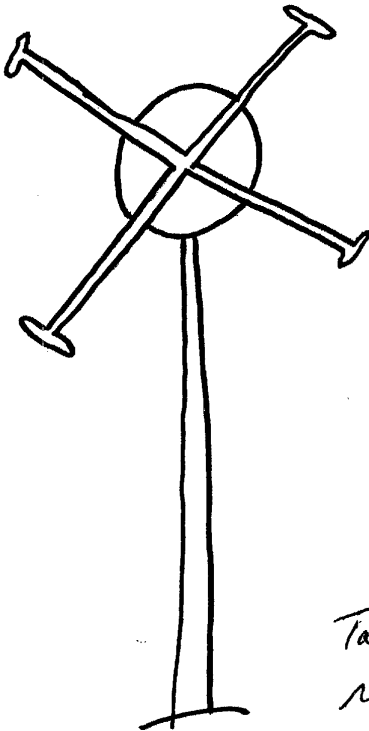
smaller object is attached at two points to the inside top of the cone; gently rocks backward forth on a swivel

cone shaped object

i

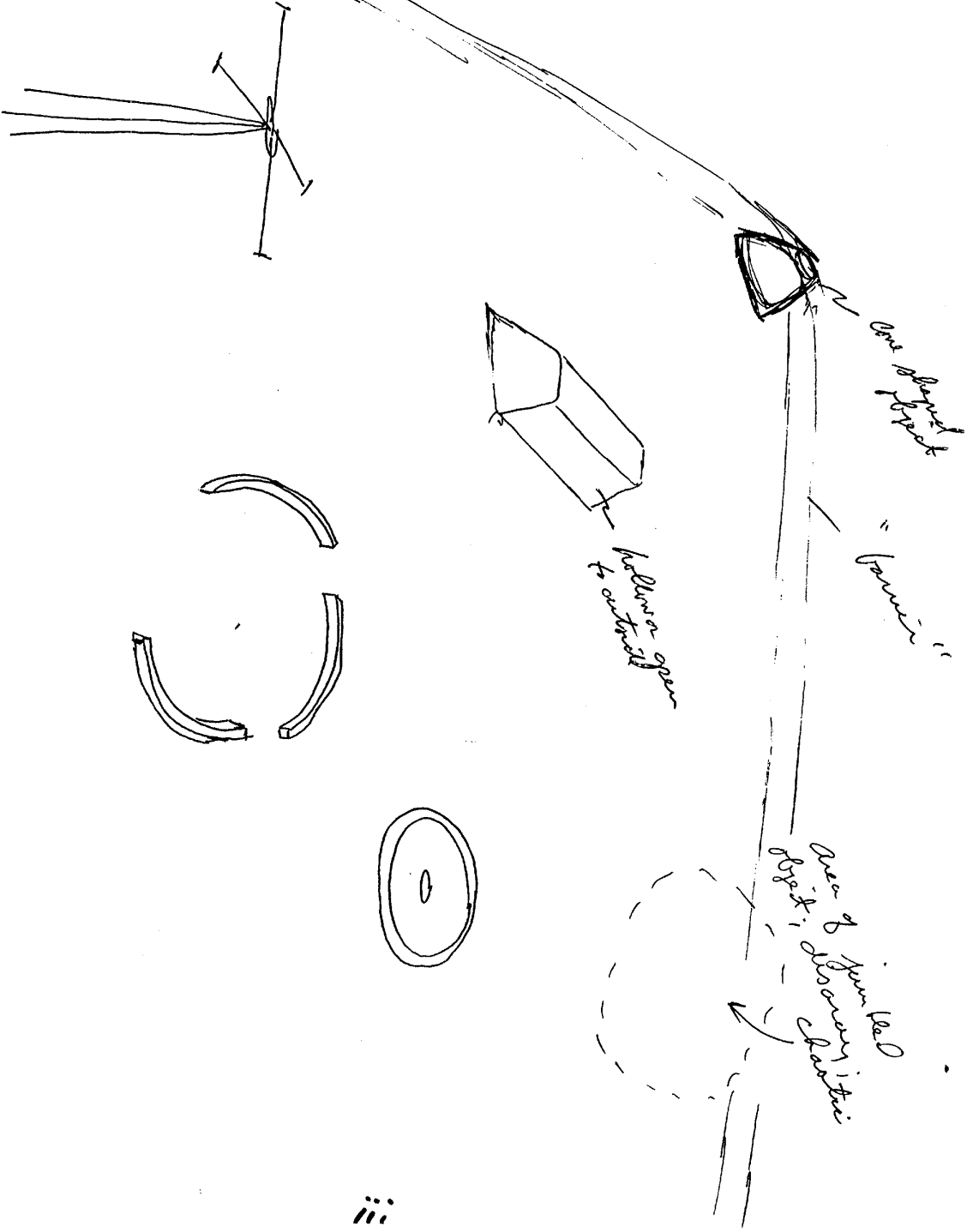


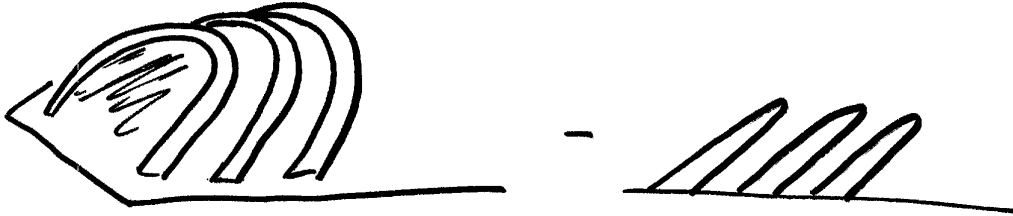
↑ "barrier", ~~but~~ but more open than solid.



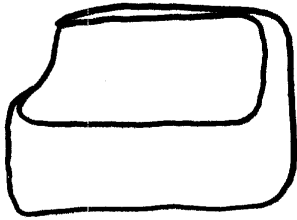
Tall object w/
radiators, "probes"
on top

ii





+ sharply curved object set upright in a surface



1/1 object

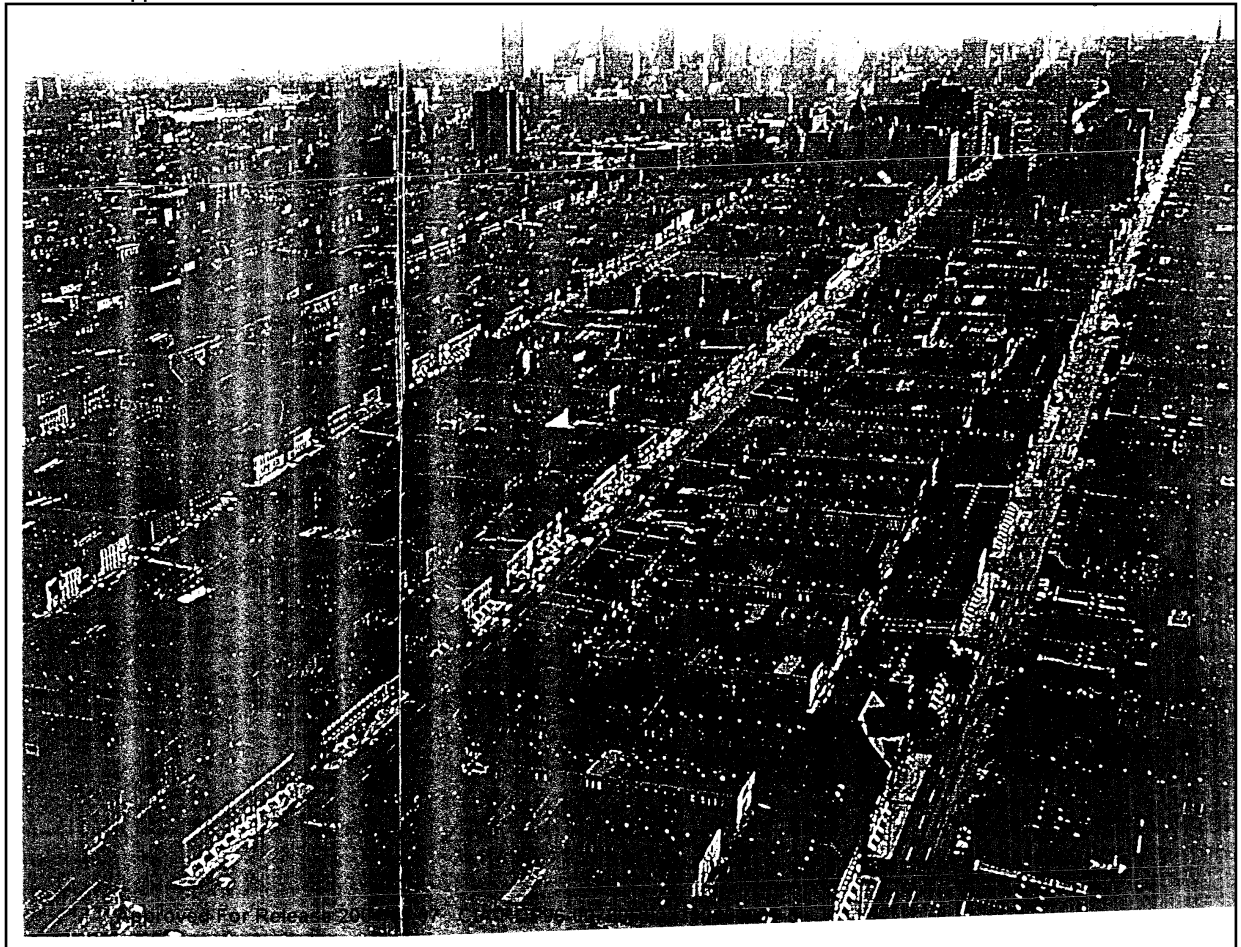


overhead view of
1/1 object

is

Approved For Release 2001/03/07 : CIA-RDP96-00789R002302450001-5

CPYRGHT



TASKING SHEET

SOURCE NO. _____

DATE 18 FEB 92

SUSPENSE: 18 FEB 92
1500 HRS

TASK NUMBER: 92-7-L

METHOD/TECHNIQUE: method of choice.

TARGET DATA:

1. DESCRIBE KEY TARGET FEATURES:

- Include forms, shapes, densities, dimensional aspects, colors, Dynamics.
- Provide an overhead, ground-level perspective.

2. IDENTIFY KEY TARGET CONTENT:

- Describe purpose, function, and people at the site (if any).
- Other: _____

3. PERSONALITY TARGET:

- Address physical, mental, emotional, intellectual and philosophical and professional aspects of target personality.
- Describe avocations and dominant interests.
- Describe notable accomplishments ascribed to the target personality.

4. DESCRIBE THE TARGET:

5. OPTIONAL COORDINATES: 691022/942633

6. COMMENTS: