

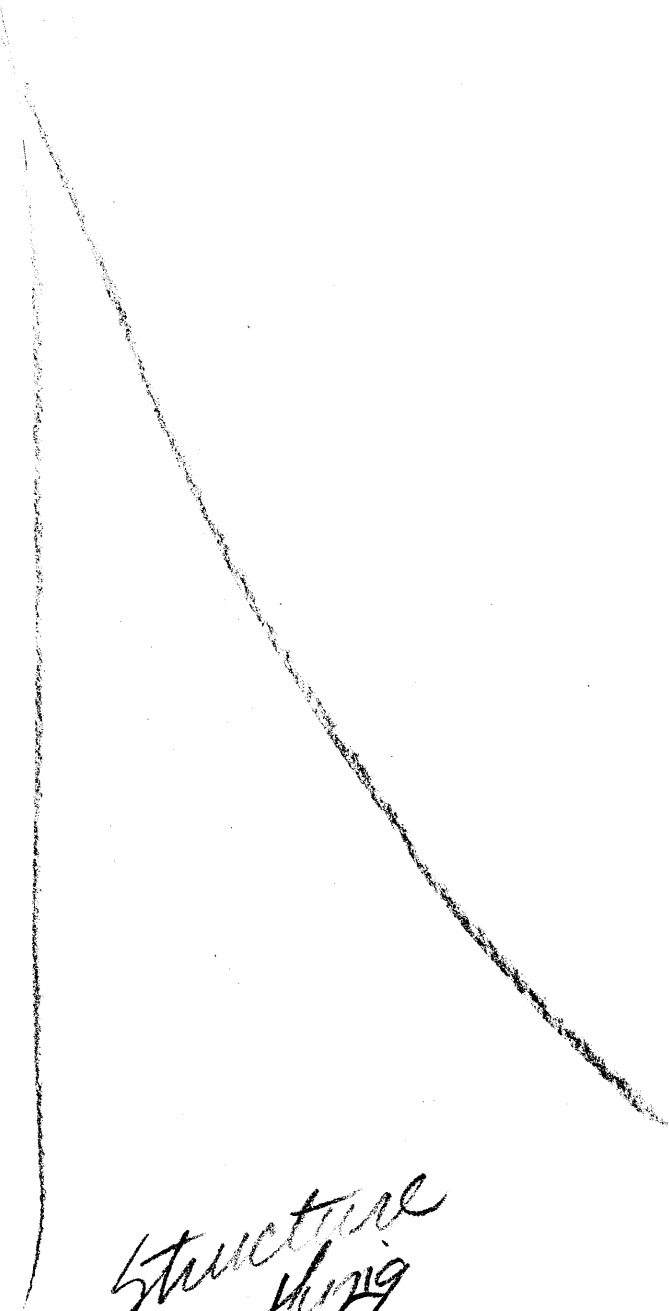
SESSION INFORMATION

- A. TARGET DATA:
Task/Target No. :92-83-P
Session No. :01
- B. PERSONAL DATA:
Source No. :025
Monitor's No. :N/A
Beacon/Sender No. :N/A
- C. SESSION DATA:
Date Task Received :5 Aug 92
Session Date :6 Aug 92
 Start Time :10:00
 Stop Time :11:00
Method Used :ERV
Aids/Distractions (PIs) :N/A
Pre-session Hunches (AVs) :N/A
Date Summary Returned :6 Aug 92
- D. EVALUATION DATA:
Viewer's Estimate :N/A
Evaluator's Estimate :
- E. SESSION SUMMARY

Brightly lit colors, and vertical stripes comprise the sides of a structure. The vertical lines are of different colors including red, blue, white etc... The many lines form a pattern on the inside. This structure has an interior design and bright lights are important at this location.

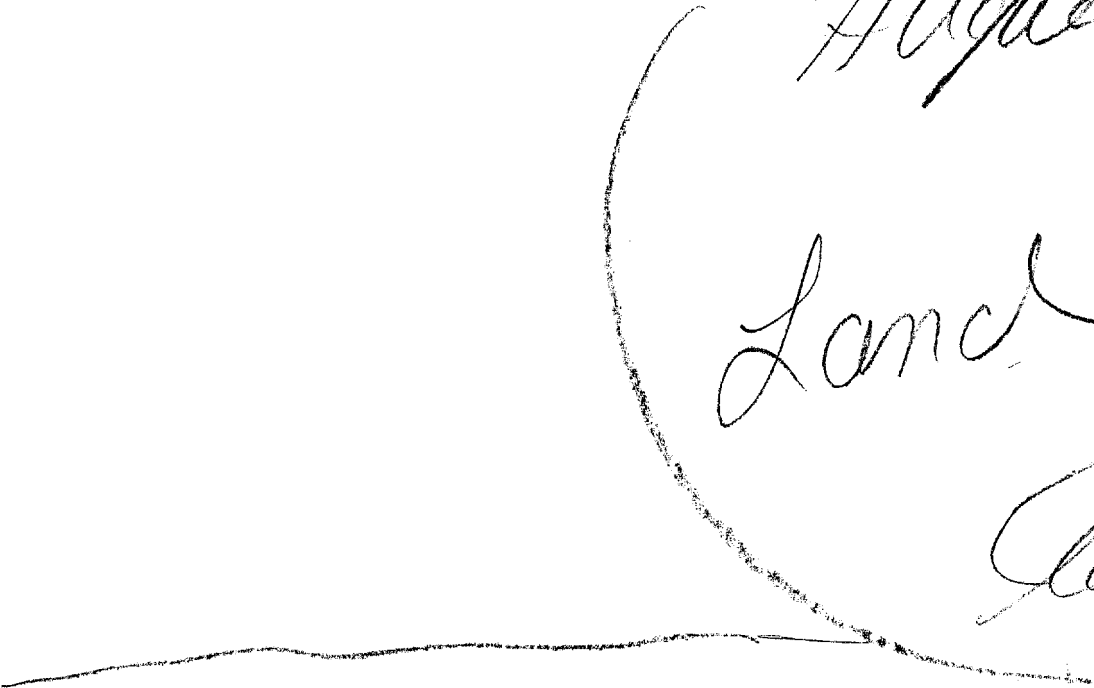
The surrounding territory at the site is an interface which separates a higher ground landing from the rest of the site. This may be a land/water interface. Predominantly, a beautiful real green earth landscape and territory is an overview at the site. There are a few small white domestic dwellings in the vicinity.

The target is a high structure and thing. It is higher than the land and is relative to the sky. Its relation to the sky provides for a panoramic view. Movement does not take place on the ground and an air locomotive which is long and sharp is of metallic design. The target structure is positioned in an upward direction toward the sky and has to do with activities in the area. This thing symbolically has to do with freedom of movement and the target surroundings are a landscape and a landing.

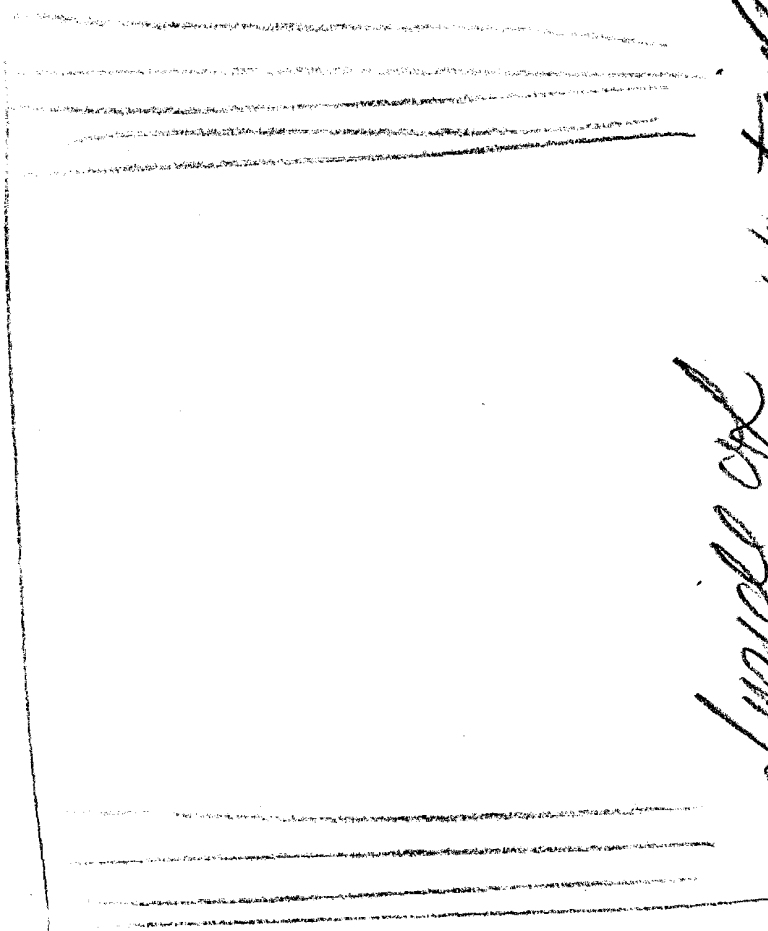


Structure
or thing

Higher
Land
(Landing)



Separated
from the
rest of the
scape.



*Sample of
Structure - Vertical
Striped pattern.*

TASKING SHEET

SOURCE NO: 025

DATE: 5 AUG 92

SUSPENSE: 6 AUG 923

1200 HRS

1. PROJECT NUMBER: 92-83-P

2. METHOD/TECHNIQUE: Method of Choice.

3. BACKGROUND: This target was randomly selected from a series of targets contained in sealed envelopes and stored in Container Number 10. The target will remain in the top drawer of Container Number 10 until 1200 hours on 6 August 1992.

4. ESSENTIAL ELEMENTS OF INFORMATION: _____
----Describe the target.

----Submit sketches in support of your findings.

5. COMMENTS: _____

~~NOTE:~~ THERE IS NO TARGET BEACON UTILIZED IN THIS PROJECT.

Analytical Elements

Element	Value
1. Space Vehicle	1
2. Space	1
3. Silver/White Blk	1
4. Star/Star ^{astorant}	1
5. Antenna Array	1

Conceptual Elements

Element	Value
1. Space	1
2. Globes/Peris	1
^{Tendrils} 3. Celestial Bodies	1
4. Spac Communicato [?]	1
5. Shield	1

PROJECT NO. 92-83-P

NB

EVALUATION RECORDS
PROFICIENCY PROJECTS

Source	Evaluation Categories (For key elements)	Proficiency Coordinator (DT-S)	Analysis Specialist (DT-S)	Outside Reviewer ()	Other
025	a. Concept/Generic	62%			
	b. Analytic labeling	58%			
049	a. Concept/Generic				
	b. Analytic labeling				
079	a. Concept/Generic	55%			
	b. Analytic labeling	48%			
—	a. Concept/Generic				
	b. Analytic labeling				
—	a. Concept/Generic				
	b. Analytic labeling				
—	a. Concept/Generic				
	b. Analytic labeling				
—	a. Concept/Generic				
	b. Analytic labeling				