

(2)

642178  
173131

A: ~~XXXX~~  
RESIDE ST.  
HAND

B: \_\_\_\_\_ CONF BAK.  
GIVES SURETY INDICATION  
OF BEING LAND, BUT  
GOT A (AI?) FOOTING  
THAT "LAND" IS NOT  
QUITE RIGHT.

642178  
173131

A: ~~XXXX~~  
NOVAH  
BURNED  
HAND

B: \_\_\_\_\_

SZ: BLUE-BLACK  
EASY  
DK TAN  
BURNED SMOKE  
"SINGLED" "  
HOT

AI BAK  
"DON'T TOUCH."  
IMPRESSION OF TOUCHING  
HOT PUTTY-LIKE SUBSTANCE  
WHICH WOULD STICK TO  
FINGER & BURN.

S4: CANNON-COLONIA

SL D R S T I AL r/s.

SOFT

GLOSSY

MARZABLO

THICK

VISCOUS

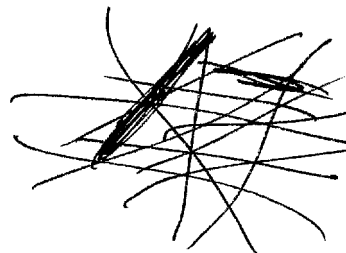
S2: BURNT SMOKE  
CRACKLING SOUND

CONF FOLK  
(AOL BUK?)

VAQUO VISUAL OF  
TWIGS + TREE LIMBS  
MORTING, ~~RESIN~~ BUT NOT  
BURNING.

S2: LIMBS

SK:



WOOD FIBER  
(MAY BE DRIVED  
FROM "TWIGS"  
ABOVE)

4

S2! WAILING SOUND

NOT BACK.  
NOT LIKE A  
FIELD SOUND, BUT  
LIKE. - - -

(LATER IN TIME)

A1 BACK

FEELING OF <sup>BEING</sup> ~~SQUASHED~~  
FLAT ~~SQUASHED~~ A BY SUDDEN  
"SITTING DOWN ON" MS.

S2! NOISE  
PRESSURE

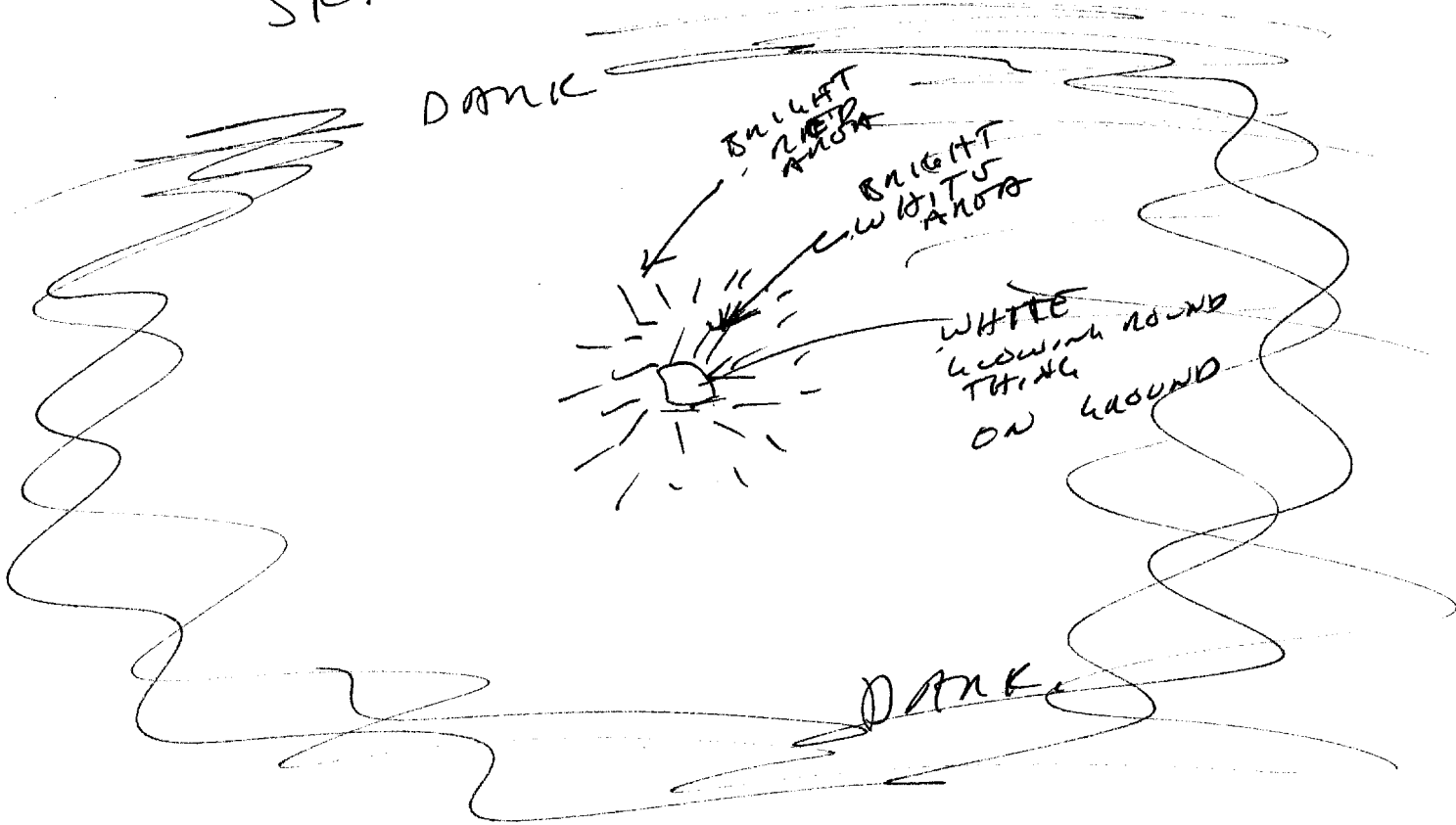
A1 BACK (E1?)  
FEELING OF NON-COMPRESSION:  
CONFUSION - ~~EXIT POINT~~  
CAN'T CONCEPT OF THIS HAPPENING.

POU SPOTTS ABOUT EVENT.  
DESCRIBE WHAT'S HAPPENING.

S2! BULLET  
RED  
WHITE

LOCALIZED  
ROUND  
ROUNDED  
RADIATING (AOL?)

SIC:



INTERVIEW SUMMARY:

A LOCALIZED AREA <sup>SITE</sup> ~~AREA~~ <sup>AS DARK, WITH</sup> ~~OF BRIGHT LIGHT.~~ (WHICH DOESN'T FEEL LIKE IT'S OUT IN THE OPEN), THE LOCALIZED AREA HAS A WHITE, GLOWING THING DIRECTLY ABOVE THE GROUND, AND (FROM ABOVE), YOU CAN SEE A ~~WHITE~~ <sup>BRIGHT</sup> RING OF RED LIGHT ALL AROUND IT, WITH A BRIGHT AREA OF PRESSURE BETWEEN THE ROUNDED OBJECT AND THE GROUND. EXPERIENCING THE AREA OF PRESSURE, ~~YOU~~ <sup>COULD</sup> ~~NOT~~ <sup>SEE</sup> ~~THE~~ <sup>EVENT</sup> ~~STILL~~ <sup>BEYOND</sup> ~~COMPREHENSION.~~

6

From 1 mile NW

As per BUK.  
ROUND DOME  
LIKE A  
SMOOTH  
MOUNTAIN



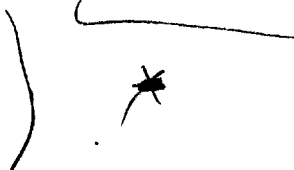
S4 1/2 IMPRESSION OF A SMOOTH,  
EVEN-COLORED "DOME" WHICH BLENDS IN  
WITH THE SURROUNDING GROUND AT ITS  
EDGES.

DOME!

S2! GRAY-GREEN  
DULL SURFACE  
LUSTRE

FM 200 MIL.

MOUNTAINS



As per  
PDU.

7

FM. 200 MILDS.

EAST

LAND + WATER  
TREES  
CLOUDS

WEST

WATER

N.

MFS  
TREES  
WATER

NW

CITY

CITY.

NOISY

CONF. RRR

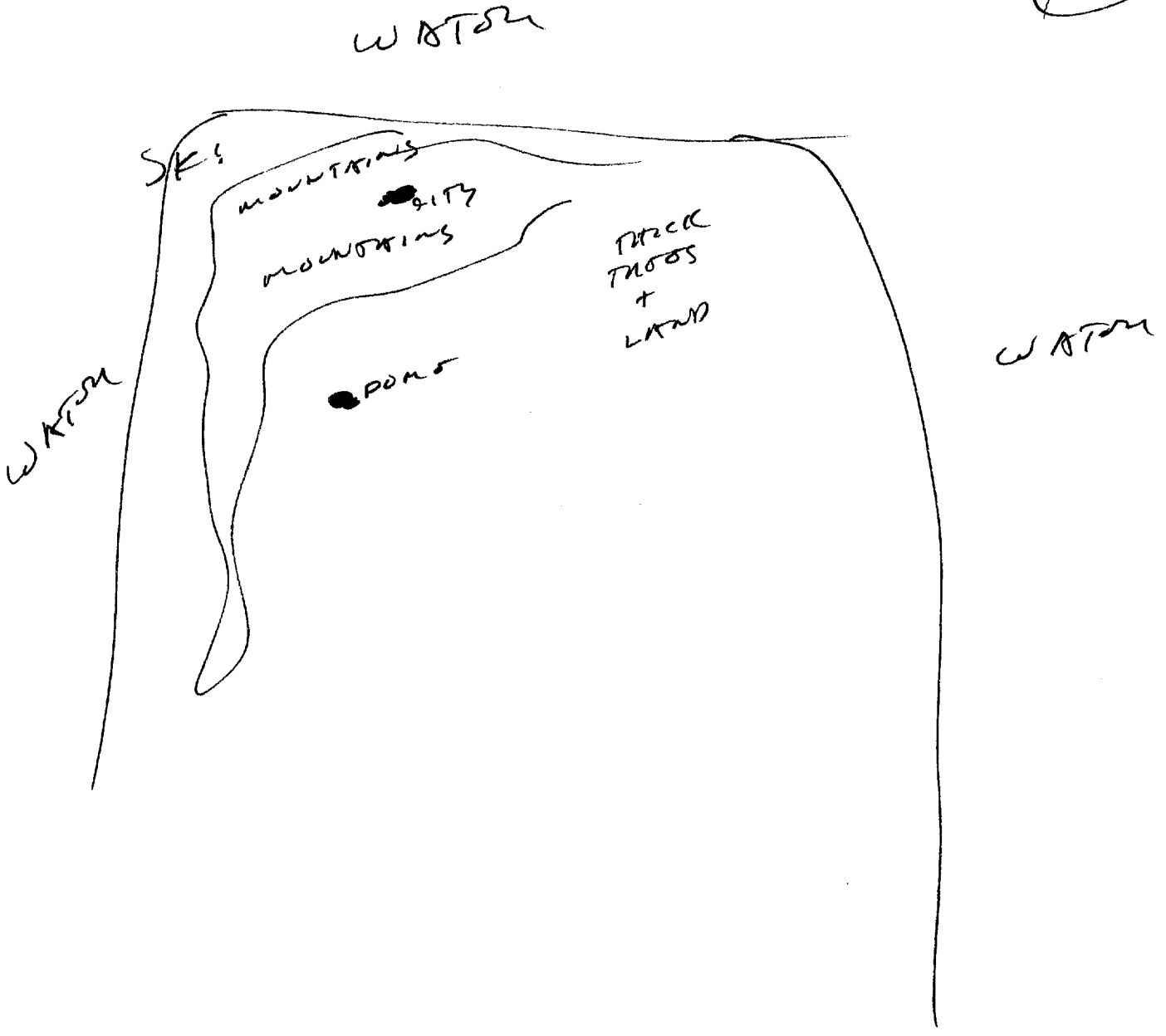
TALL CLUSTERS BLOBS  
+ SHARP DIRT BLOBS  
MORNING TOGETHER.

DARK SKIN  
WHITE CLOTHES

(PROBABLE ORIGIN  
FROM IMAGINATION  
OF POKU)

GENERAL LANGUAGE.

8



BNK 1053 HUS.

RESUME 1108 HRS.

DESCRIBE INTONATION OF MOUTH

S2: ROUND  
HAND  
"HAPPY" NOISE  
OZONE SMELL  
SUDDEN "POP!"

A1 BARK.  
FEELING OF DISLIKE,  
RESSENTMENT AT SUDDENNESS &  
COUDNESS OF IT.

PRICK TO THE HAPPENING!

S2: DARK  
PEOPLE SOUNDS  
SCRAPING NOISE  
METALLIC SOUNDS  
ECITOS

CONSOLE OF STRUCTURE.

S2: HOT  
BRIGHT  
TANGY  
YELLOW-WHITE  
PAINFUL SENSATION.  
OZONE SMELL  
SURFACE ITSELF  
TOWNSHIP

A2 BARK.  
LIKE ANTICIPATION



10

S4: CONTROL OF STRUCTURE  
JWB ~~DOZENS~~ SWIFT

S2            D            M            ST            T            G            MR            ALS.

LOOKING UP  
AWARDS  
EXCITEMENT

EXPERIMENT.

END OF EXPERIMENT  
SUCCESSFUL?  
RESULTS

S4            D            M            ST            T            G            MR            ALS.

PAID  
DINK  
QUIET

RESULTS

END OF ~~STEP~~ FEEDING

S4 1/2 IMPRESSION THAT THIS IS SIMPLY  
THE END OF ONE STEP, NOT THE END OF  
THE EXPERIMENT. THE STEP CARRIED OUT  
CORRECTLY.

(4)

ULTIMATE END OF ~~EXPERIMENT~~.

SZ ~~1~~ 0 07 T 1 002 0/5,  
PLACE

LANCE  
DOWN

CRM  
POSTCOFU  
~~THE~~

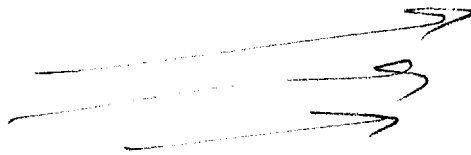
AI BUK  
NICE!

SZ 0 07 T 1 002 0/5,  
RESULTS.

JOY  
COOPERATION

LATE STEP

RISING UP  
DRAWING UP  
PULLING UP



EXTRUSION PULLING

REL FEEL.  
WIND DRAWING  
002 BUK  
LIVING BINSIT.

RI BUK AT PULLING  
FACULTY  
SMITH  
YANK + ITS

~~FINAL STEP~~  
~~JOY - ESTABLISHMENT~~  
WHY?

(12)

SZ      0      K7      ST      σ      1      room      n/s.

PLAIN SURFACE →

GRAY  
WHITE  
LUSTRE

WIDOW  
TALL  
EXPANSIVE

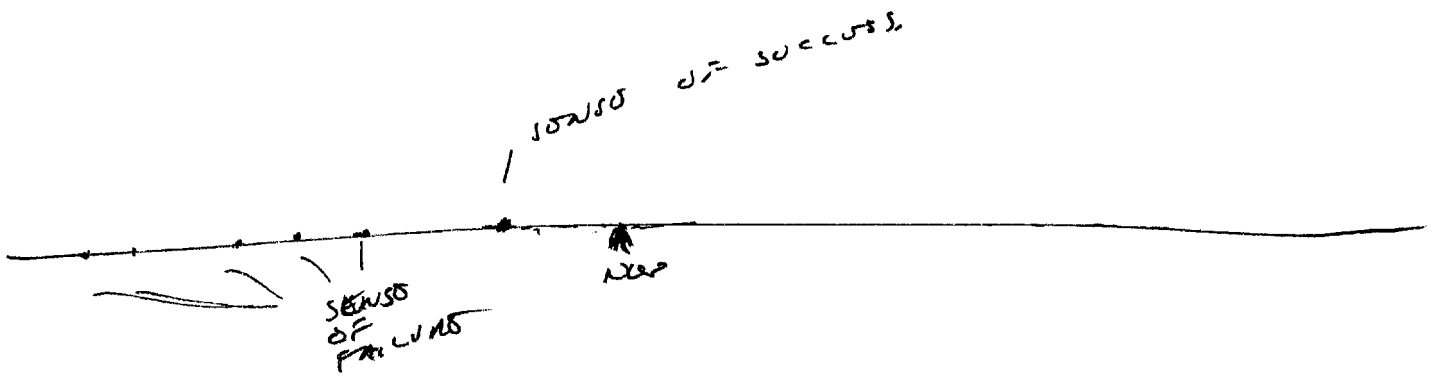
As a DRILL  
SURFACE OF  
A SPINNER.

As a DRILL  
CIRCL.

SIDE

S4 1/2      IMPRESSION      OF      DRILL      AS      A  
BROKE IN A LARGES      SURFACE -      PULLING  
SMALL      THROUGH -      WRITING FOR      SMALL TO  
APPEAR.

1st stop - where will it happen?



with: harmonic wave

A: across  
round  
itard

B: \_\_\_\_\_

S2: solid  
cool  
itard  
manmade  
very  
pull LUSTON

for Bill  
etc short

SUMMARY: SITE IS AN ~~EVENT~~ WHICH TAKES PLACE IN A DOME-SHAPED STRUCTURE LOCATED IN ISOLATED MOUNTAINOUS AREA - LOTS OF TREES.

INSIDE THE DOME IS A ROUND OBJECT ABOVE THE FLOOR. BETWEEN IT AND THE FLOOR, A SUDDON ~~CHANGE~~ PRESSURE HAPPENS, THE INSIDE OF THE STRUCTURE IS DARK EXCEPT FOR AN AREA AROUND THIS OBJECT, WHICH IS WHITE + RED + VERY BRIGHT.

THIS EVENT SEEMS TO BE THE FIRST IN A SERIES OF STEPS WHICH WILL EVENTUALLY END SUCCESSFULLY. THIS FIRST STEP SEEMS TO HAVE HAPPENED SEVERAL TIMES IN THE PAST, BUT THE ONE VIEWED ~~THIS EVENT WAS IN THE RECENT PAST.~~ ~~THE PRESENT SITUATION~~ WAS THE ONE WHICH HAPPENED SUCCESSFULLY.

THE PRESENT SITUATION WITH THE STRUCTURE (DOME) IS ONE OF QUIESCENCE, QUIESCENCE.

THE LAST STEP SEEMS TO INVOLVE A "PULLING OUT" PROCESS, WHERE SOMETHING IS PRODUCED FROM A "BREAK" OR "HOLE" IN A SOLID SURFACE. (NOT: HOLE SPITS)