

SG1A

Approved For Release 2000/08/08 : CIA-RDP96-00789R002000250002-1

Approved For Release 2000/08/08 : CIA-RDP96-00789R002000250002-1

LYN
FT. MEAD
15 DEC 80
0811
ED.

P.I. NONE
A.V. NONE

~~127400
310088~~

A: ACHEAT
FLAT
ITMND
B: _____

~~127400
310088~~

MISS TRAK.

~~127400
310088~~

A: AUMBY
UKND
FLAT
RUMY
Q: UNY

SZ: BUNNY FSOZ

SZ: D AI ET T I A02 A/S.

BUNNY
BROWN
"MDDPY" SMELL
THICK FSOZ
"PLAIN" TASTE
THICK
U/I SOUND
WARM

OPEN
WIDR

FLAT
SPACIOUS

(2)

82 0 17 17 T 1 A2 AL

RISING
CONJUG
ROUND
LOW
FLAT

A2 TRK.
SAND PUNDS.

BROWN
DARK
WBT

CONF TRNK
OPEN / BUT ENCLOSED
FOOT INK.

A2 TRK.
MISSILE SILO.
WHELS "PACKAGE" WHICH
WAS FOLT WHTON SITE WAS
THE BARIUM EXPIMENT
SEEMS PRESENT AT THIS
SITE.

3

SITS.

S2 D RI ET T I AZL A/S.

BROWN
DK BROWN
WRECKED

← BUMPY FUEL
FLAT
PLAIN
ROUGH/SMOOTH

A1 BRE.
VERY "NOTHING GOING ON RIGHT NOW" FEELING.

AZL RPK.
LIKE IN A
CLOSED STONE.

MOVE TO TIME OF ACTIVITY

S2 D RI ET T I AZL A/S.

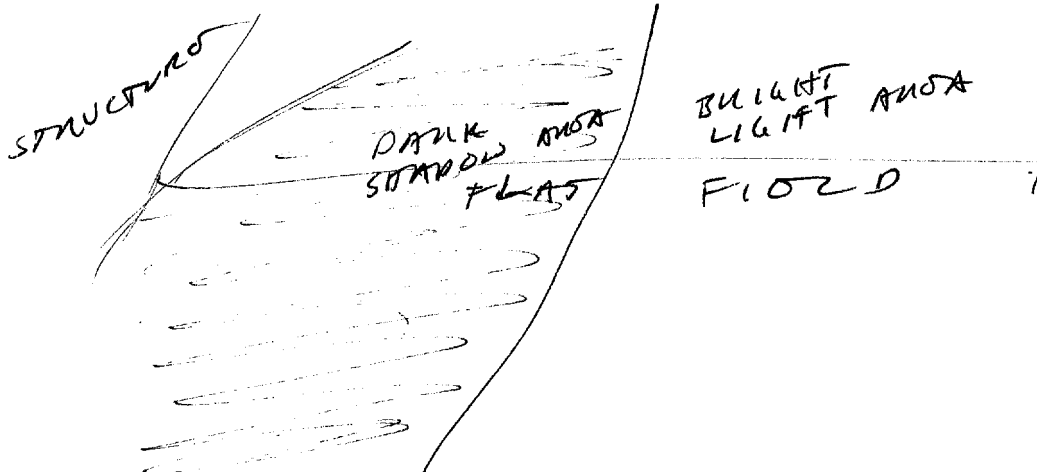
LIGHT

DIVISION
PARTITIONED

LIGHT

AZL RPK
SUNLIGHT THROUGH AZL
OPEN ROOF - LIKE
OPEN OBSERVATION ROOF.
OR LIKE OPEN STAIRWELL

AZL
SK



4

ABOVE SITE SHAPE SHOULD BE VISIBL

SZ D M SL T I ROL R/L

ROL R/L
VISUAL OF
STRUTS/STRUCTURE/
CURVED "ROOF",

ABOVE SITE

SZ D M SL T I ROL R/L
DARK
GREY
LINES

LIGHT COLORED
CONCRETE

COOL
SMOOTH
"TRAPPED HOT AIR" FEEL

ROL R/L
HOT AIR BALLOON.

5

NOVO BACK TO SITS.

SL O AT ET T , NOC A/S.

STRUCTURE

ROUND
LARGEST
SMALL
TALL
CLOSED

QUIST

COOL

AL BAK.
THOSE "BUMPS" FEEL LIKE "THINGS".

SZ

Q#

A1

ET

T 1

NOV A/S.

STRUCTURE

CRAY
DARK
LIGHT.

ALL DARK
BOXING KNOWS

STRUCTURE

MOTOR SOUNDS

ALL DARK
WATERHOUSE
STORAGE.
TSMANIAL.

⑥

SZ D M E T I R MTS.
STRUCTURES

LENSY
DRINK
LIGHT
O/~~1~~ SOUNDS
MOTOR SOUNDS
PEOPLE TALKING
LARGE
OPEN
WIDE
ENCLOSURE
CAUTIONOUS

HARD WORK
THINKING
SOME MUSCLES

STONAZED

MAY BE IN ^{REST} "WARRIORS"

BREAK 0842

RESUME 0911

OPEN AREA
ACTIVITIES

SZ M E T I R MTS.
OPEN AREA
ACTIVITIES

LOUD
RUMBLING
GRATING SOUNDS
STOP + GO.
"BOOM"

AI RNC.

SUPPRESS LOUD SOUND.

7

82 D A1 E1 T 1 ROR R/S
ACTIVITY

~~SMALL~~ SMALL
ECHO SOUND

R1 DRK
SURPRISE



ROR DRK.
WIND ON GROUND
NUKE EXPLOSION.

PLACES SEEMED TO
BE SUDDENLY +
COMPLETELY FILLED
WITH THICKNESS
& LOUD SOUND,

S VI

PROSSONS PUSHING OUT.

82 D A1 S2 T 1 ROR R/S,
PEOPLE

A: ACCESS
THROW
DOWN
SOUND
NEARBY
B: STRUCTURE

8

S2 D R1 E T I ROR R/L.

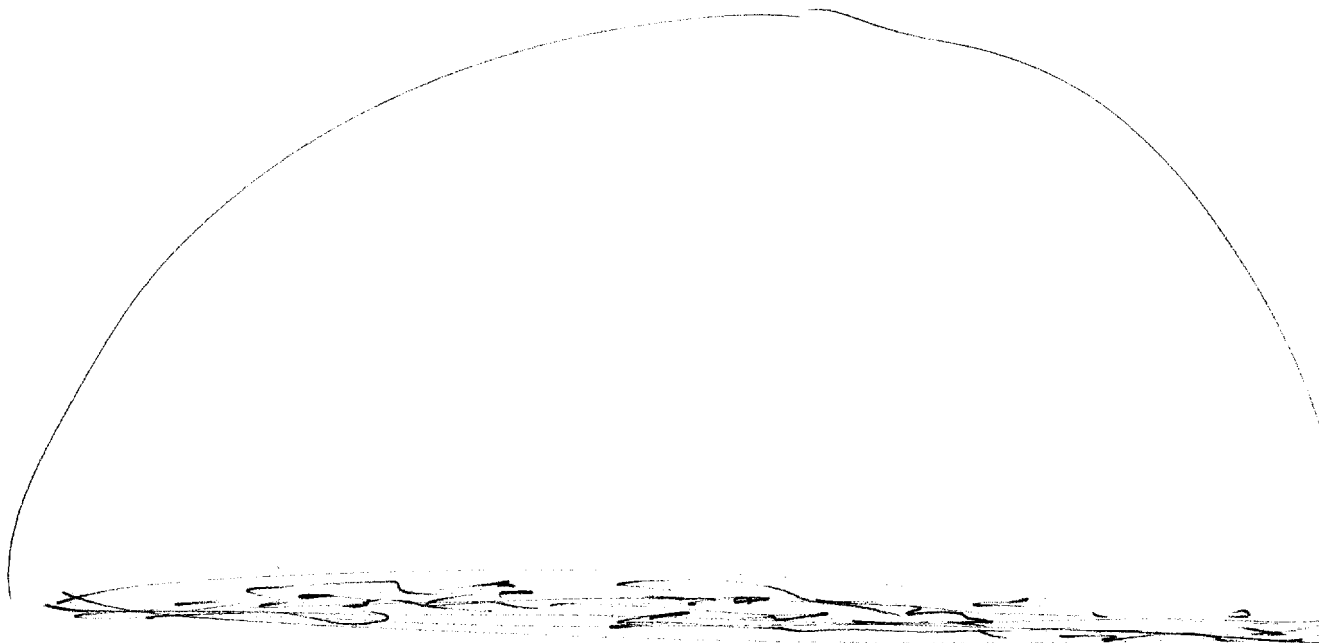
PEOPLE
HAND WORK
HER BUSINESS
PURPOSE
TASKING

PEOPLE

WORK
OBEY WORK ORDERS

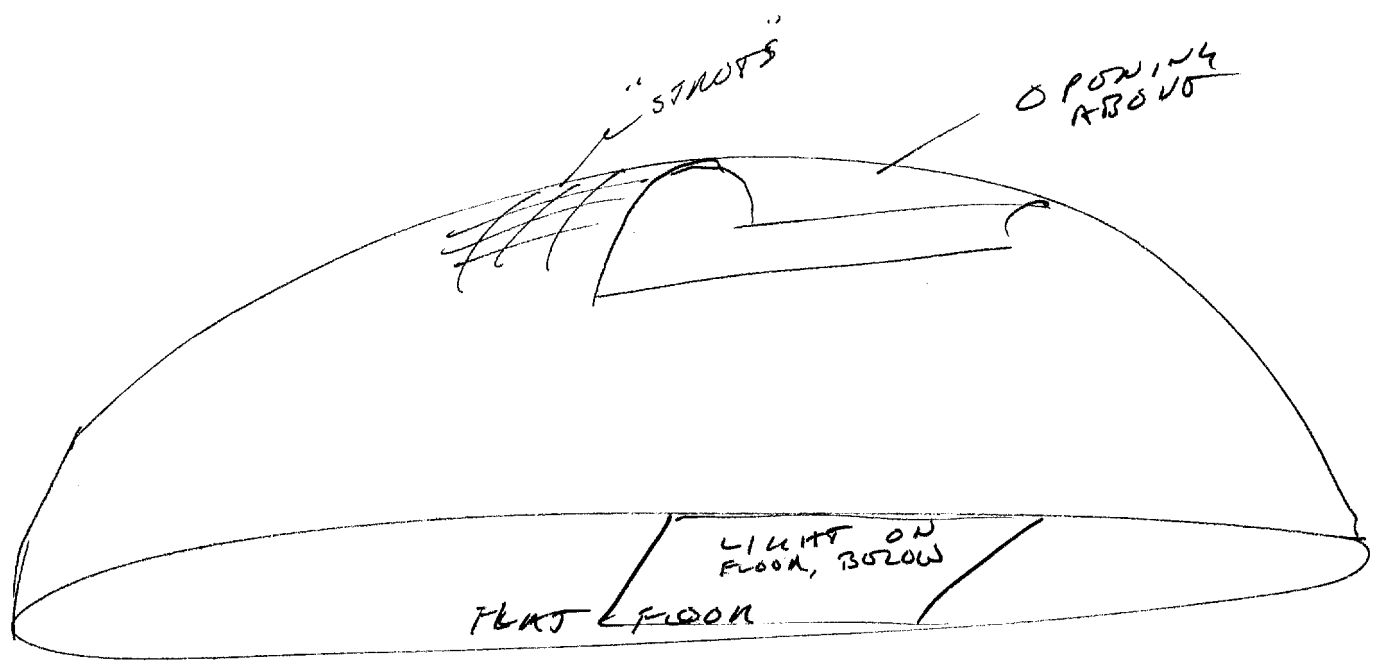
SUMMARY: SITE IS ON ENCLOSED AREA, ONLY
BARGE. IT HAS PEOPLE WHO ARE ~~WORKING~~ WORK
DOING HAND MANUAL LABOR WITH MACHINES. THE
ENCLOSURE GIVES THE IMPRESSION OF BEING DEMO-STRATED.

SK:



9

DOMES SHOWING OPENING & LIGHT.



"EXPLOSION" IN THE DOME SEEMED TO
 SUDDENLY COME FROM ALL PARTS OF THE DOME AT
 ONCE, RATHER THAN FROM ONE PLACE, SPREADING OUT
 ACROSS THE AREA. IT WAS AS THOUGH THE PRESSURE
 INSIDE THE DOME SUDDENLY INCREASED FROM ALL
 DIRECTIONS AT ONCE.

AFTERWARDS, THE "DOME" STRUCTURE WAS
 PERCEIVED AS STILL BEING THERE.

I FELT THE AREA ABOVE THE DOME AS
 BREAKING, COMPACTING, & PARTIALLY FALLING BACK INTO
 THE "DOME" BUT ~~THE~~ THERE IS NO PERCEPTION
 OF THE ~~STRUCTURE~~ STRUCTURE BREAKING UP & FLYING AWAY.

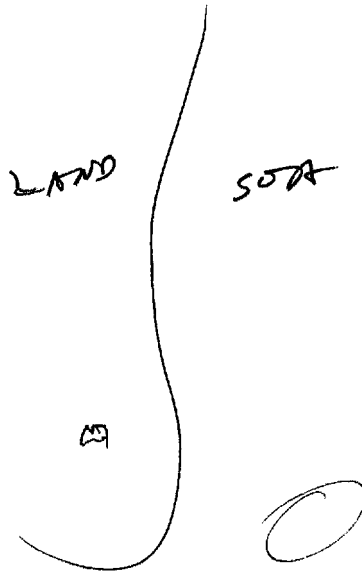
10

ALSO INSIDE THE STRUCTURE SEEMS
JUST LARGO TO MS.

ALL BULK
TONS OF DIRT FALLING
INTO A HOLE

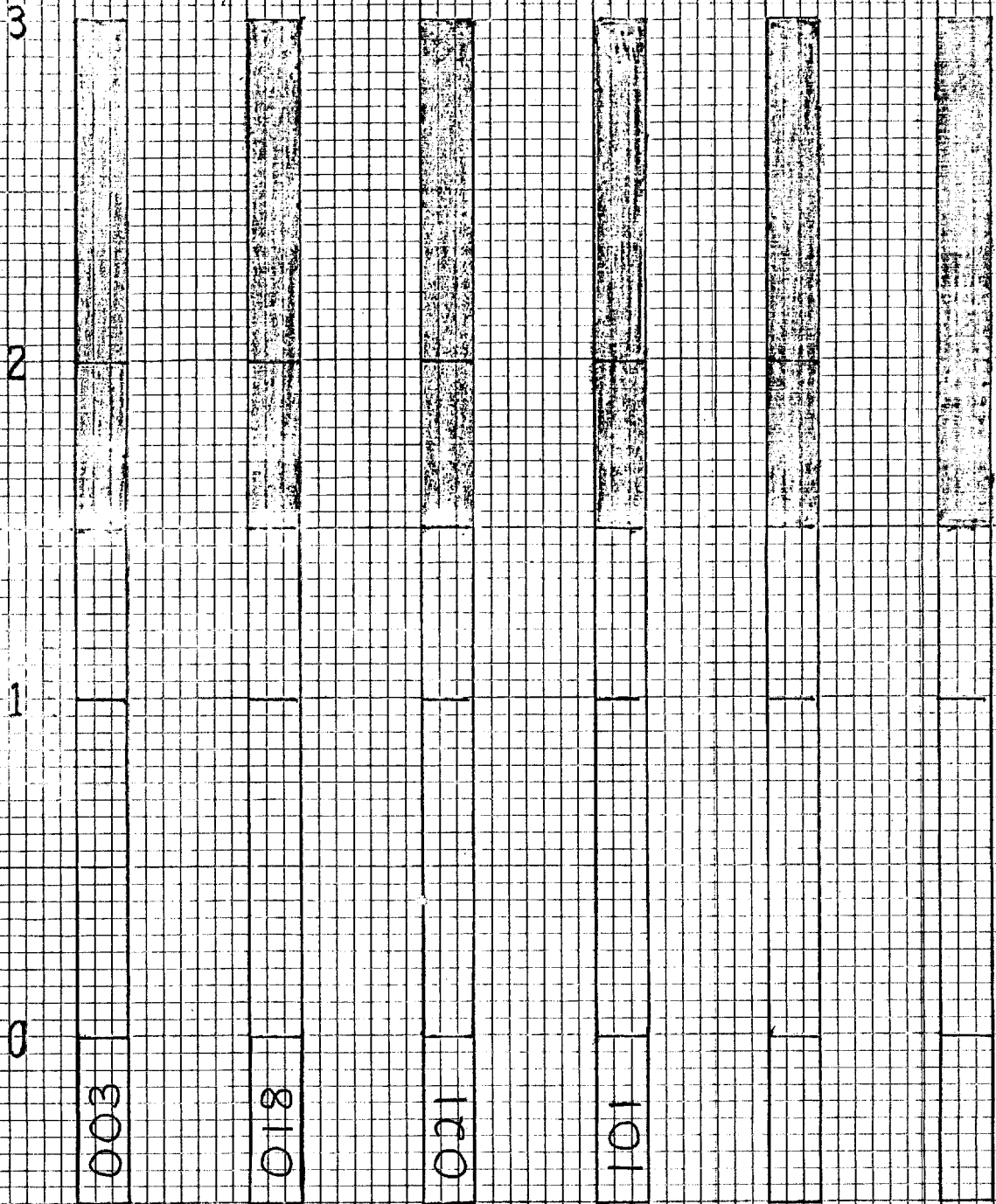
ALL MK.
UNDERGROUND NUKO TEST

ALSO + LOOK AT CONTINENT.



SITE END
0931

PROJECT I-2



PHILOM - 10 X 10 TO 1 INCH
10TH LINE HEAVY

REMOTE VIEWER