

SG1J



181307ling  
F66M  
Ed

028001

902224



A rising angle  
sloping down  
solid

B structure

5" green  
crust  
thin

Adv fresh - knot

028001

902224



A rising angle across  
angle down  
solid

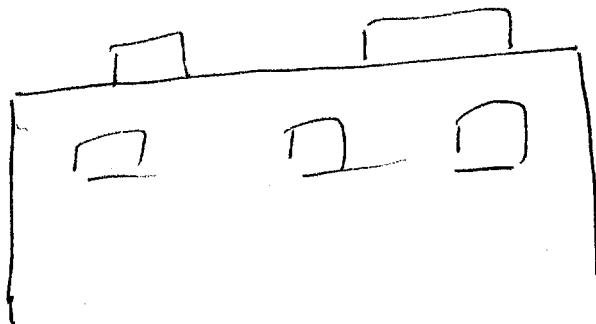
B structure

5" greyish white  
rough  
strong  
sandy base  
whispering sound

flat  
with  
tree

At beach - I feel like  
I'm standing on  
top of a bldg.  
Looking down

Smooth  
clear  
glittering light



From 1 mile high something  
should be visible

S<sup>2</sup>

D

AI

EE

T

E

ADL

A/S

intersecting roads  
open land around  
grouped buildings  
fence  
towers

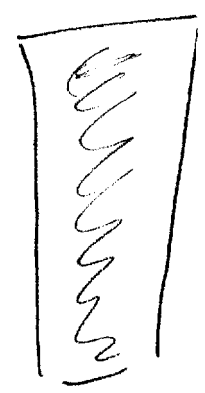
ADL/Brick -  
Military post

White pond

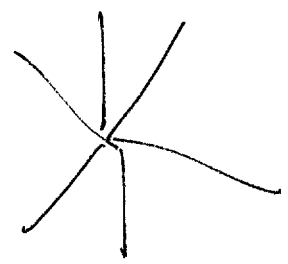
ADL/Brick -  
White pond  
Missile  
Range

S<sup>2</sup> D AI EI T I A/L A/S

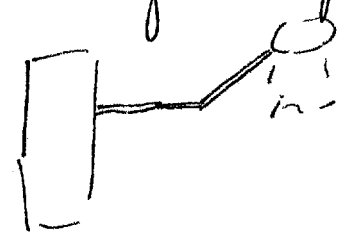
Rectangular cement "post"



Windmill like tower



underground pipes



hole

As a break -

hole

52

D

AI

EI

T

E

Ad

A/S

Adc brush -  
cistern

hissing sound

Adc brush -  
like steam  
weeping

hot

hot

stuffy

gurgling sound

Adc brush - like air  
being forced into  
water

S<sup>2</sup> D AI EI + I AD AS

Clear liquid

Strong acid smell  
slight fuming

ADL fresh-like  
very soft water

Cold

S & 2 - happy picture of  
people running toward  
it. Wearing clothing.  
Shouting. Fresh  
in a line of pipe.

ADL fresh-  
fresh in  
liquid fuel  
line

52

D

AI

ET

T

I

AL

AS

Site is a group of buildings with open land on all sides. There are intersecting roads at the site among the grouping of buildings. Area is fenced. Mountains in the background. There is a rectangular cement structure holding liquid at the site, with underground pipes leading to a tank-like structure. The liquid is clear, but has a very pungent odor, is cold and thick and like very soft water.

1341