

①

19 MARCH AFTER ATTACK
TWO CONVOYS LEAVE SITE
FIRST TACTICAL SECOND CONSISTING
OF VANS AND TRUCKS LEAVES
SOME TIME LATER.

AT WIDE POINT REG SOLDIERS
IN BLUE UNIFORMS ARE SMUG
AND , THERE IS A
MAN IN AUTHORITY HERE FROM
SITE WHO IS HIGHLY PISSED.

REPLACEMENT BEGINS ON
DAMAGED EQUIPMENT ON ONE
FOR ONE BASIS RATHER THAN
REPLACING PARTS. A TOWER
IS ERRECTED THAT LOOKS LIKE
A MICRO WAVE TOWER BUT
IS ONLY ABOUT 10 FT HIGH
SUBMARINE IS MOVED AND
TESTED. FRONT IS ELEVATED

AND LOWERED BY HYDRAULIC

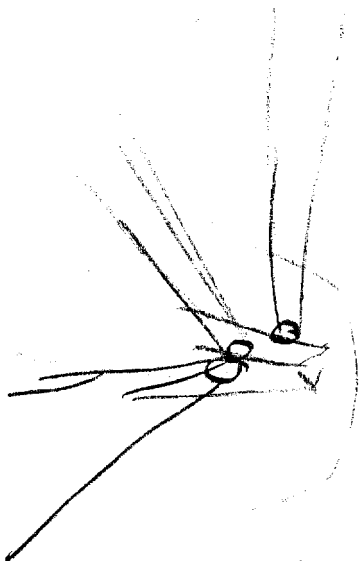
A PERIMETER OF FOOT
SOLDIERS IS ESTABLISHED IN
360°. 3 HEAVY ARMOR
VEHICLES MOVE BACK AND
FORTH BETWEEN BERM AND
ROAD. LARGE METALLIC SLED
LIKE OBJECTS (GENERATORS) ARE
UNLOADED FROM TRUCKS. THROUGHOUT
THE DAY TOWER GETS HIGHER
AND IMPROVEMENTS ARE MADE
IN DEFENCE OF BERM. IN
AFTERNOON A VERY LARGE
FLAT VEHICLE WITH ARMOR
VEHICLES ON BACKS LEAVE
SITE #1.

AT NIGHT TIME LIGHTS
(VERY BRIGHT) ARE TURNED ON
IN COMPOUND. WORK (WELDING
CLANGING HAMMERING) GOES ON

3

UNTIL AROUND 2200. WHEN
MOST OF LIGHTS ARE TURNED
OFF HOWEVER INSIDE OR
BUILT UP AREA CONTINUES TO
BE PARTIALLY LIT.

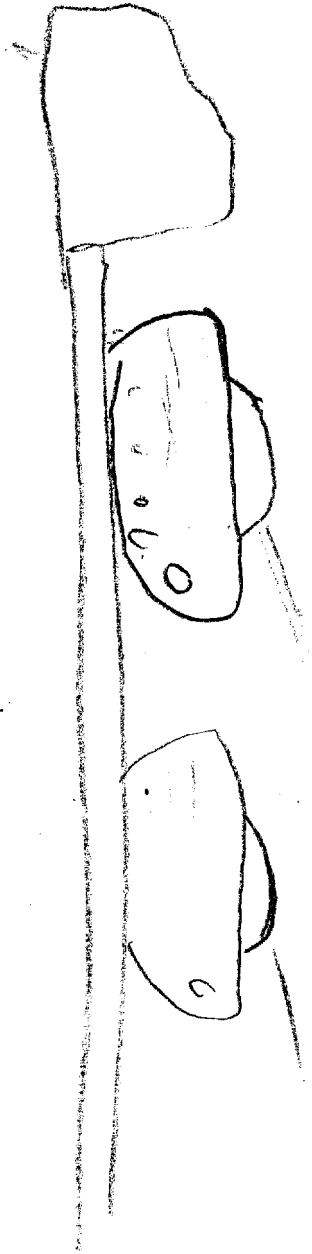
Sketch



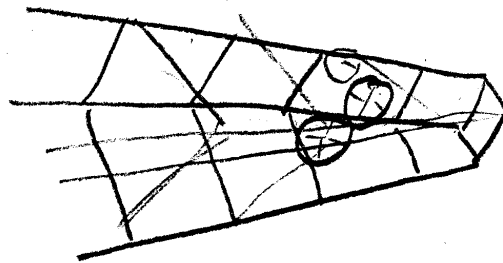
1000000
 ANGLE
 DISC

Handwritten scribble or signature.

Sketch

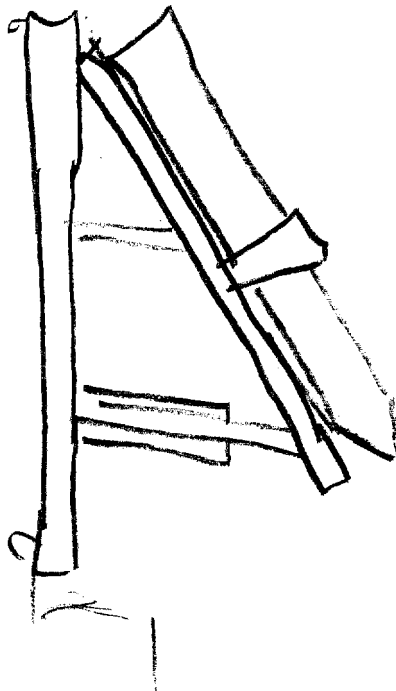




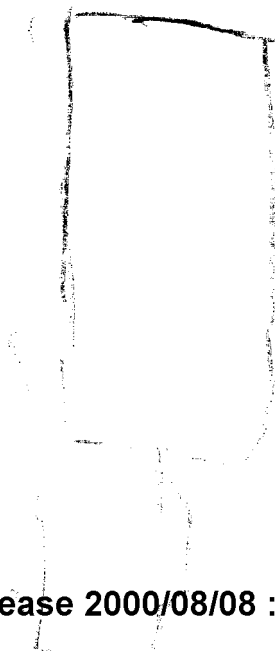
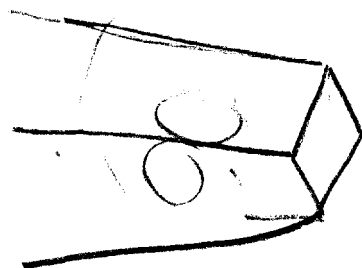




KNOB
ON
S.I.D.
OK
S.A.M. MARK



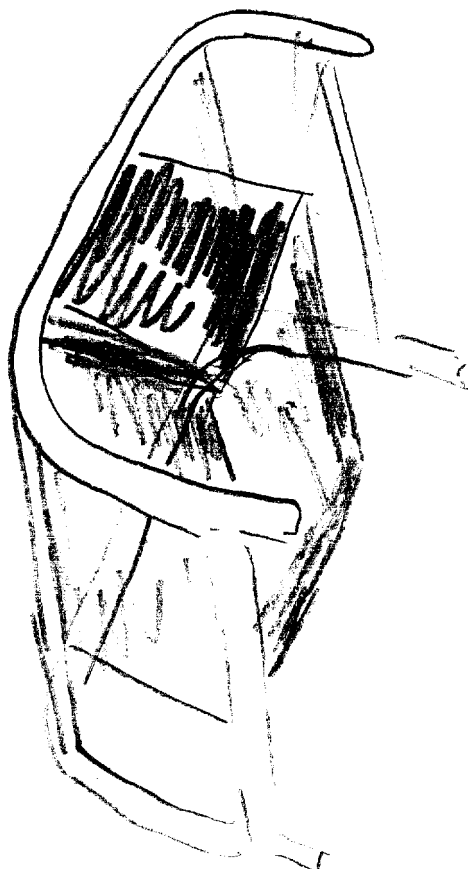
TESTING
S.A.M. MARK



FLUOR

AT

TOWN



SLED LIKE
THINGS
TRUCKS
UNLOADS