

Paul
12 Oct 84
10:15

32° 22' N.
106° 10' W



003
051

A. miss break

32° 22' N.
106° 10' W



1015
1026

A. across
solid

B. ground c



A. wiggling
fluid

B. water

S-2

- Steel blue yr
- smooth pc
- dark gray c
- contoured c
- rounded c
- dark yr
- enclosed pc
- manmade yr
- hard pc
- waves c
- purplish red yr
- bulging pc
- windying pc

ACL Break

canyon red rock walls

W. hills
sands
desert

32° 22' N.
106° 10' W.



A. *quartz*, descending
hard
B. *land*

S-2
yellow ochre pc
Grassy cfr

AOL Break
Sulfurous mine tailings
in South Africa

S-2
conical pc
symmetrical c
Blue cfr
green pc
Minerals c
crystals pc
oxidized pc
layered pc
faded pc
pungent smells cfr
dang c
dusty c p
gritty c
loose soil c
rocks pc
Sandy c
steeply, c

AOL Break
colony Open pit mine
Bisbee

32° 22' N.

106° 10' W.



S-2

flat topped pc
sculpted c
grey c
curving c
smooth c
rubble pc

A. flat, across
solid

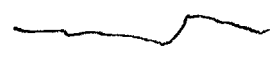
B. land

AOL Break

Mr Rushmore

32° 22' N.

106° 10' W.



S-2

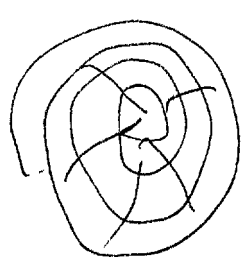
deserty c
brushy c
abruptly rising c
lined c
:

A. rising across
solid

B. hill c

AOL Break

Devil's Tower

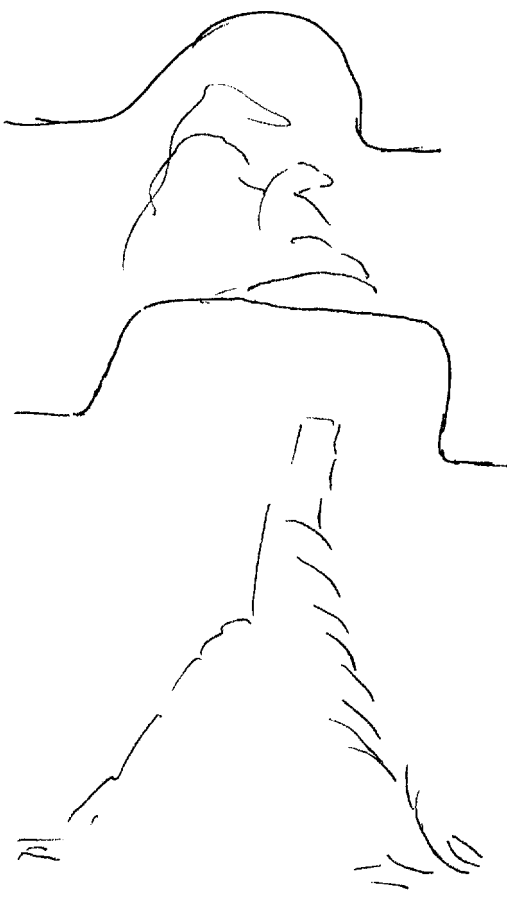


S-k

dark brown cfr
circular c
open area c
broad exposure c
tall c
wide c
jagged c
massive c
solid c
hulking c
Ved cfr

AOL Break

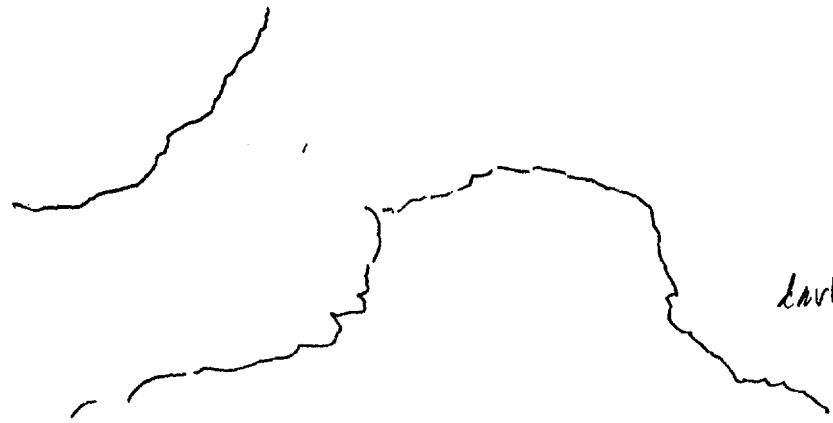
Open area



AdL Break
 Ayers Rock
 Australia



AdL Break
 Chimney Rock
 Wyoming



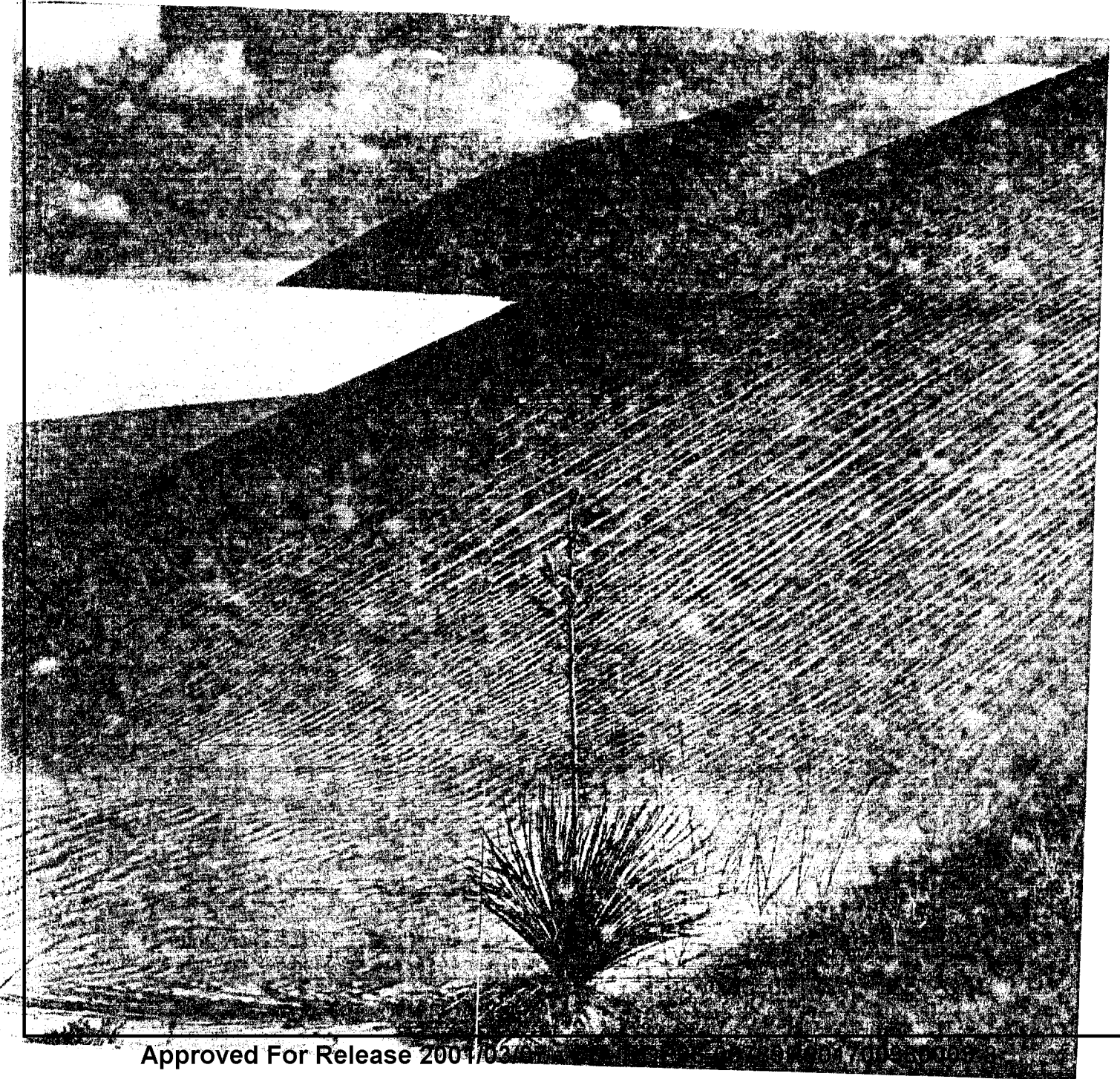
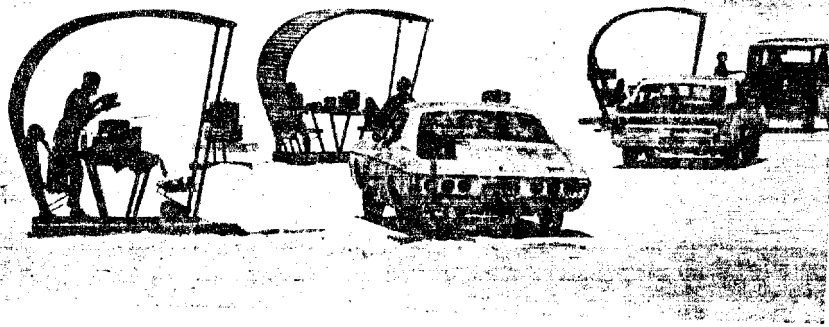
Solid
 convoluted
 dark colors of
~~grades of~~
 dark fine HOC
 parallel
 limestone/sandstone of



Sketch

Natural hilly formations
lined, grey, dry, deserts
Circular, smooth, conical,
brushy, arid, rocky, steep slope
Symmetrical

Red Break
Badlands Dakotas



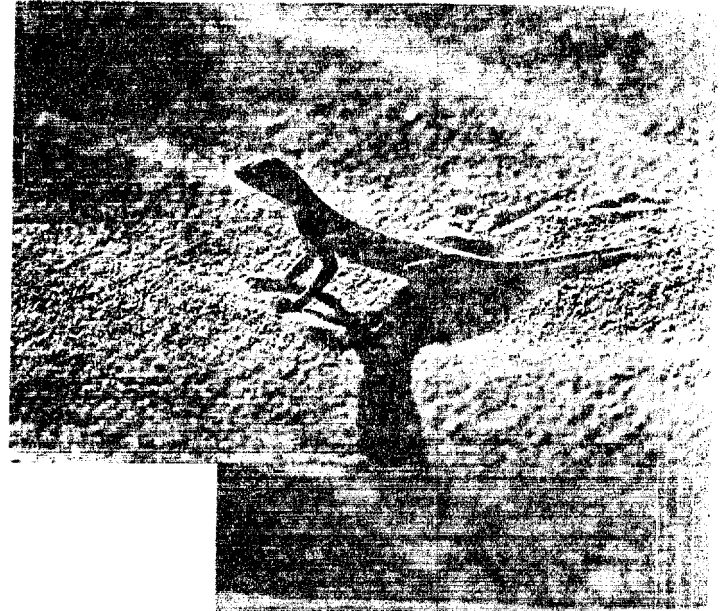
White Sands National Monument

SHIMMERING wavelike dunes, fresh as a wilderness snowfall, blanket a vast area in the Tularosa Valley. Ever growing, ~~the dunes~~ ~~are~~ ~~changing~~ ~~the~~ ~~dunes~~ ~~inch~~ ~~forward~~ ~~before~~ ~~the~~ ~~prevailing~~ ~~south-~~ ~~west~~ ~~winds~~.

The world's largest gypsum desert was created millenniums ago when the mineral was washed from the flanking San Andres Mountains, deposited in dry lake beds, and blown by winds into dunes—a process still going on. Established in 1933, White Sands National Monument preserves near 300 square miles of the ~~great~~ ~~desert~~ ~~landscape~~ ~~that~~ ~~attracts~~ ~~thousands~~ ~~of~~ ~~visitors~~ ~~who~~ ~~come~~ ~~here~~ ~~each~~ ~~year~~. ~~The~~ ~~National~~ ~~Service~~ ~~de-~~ ~~velops~~ ~~like~~ ~~picnic~~ ~~shelters~~ (lower left). To keep a way open for cars, employees spend countless hours grading and scraping away the sugar-fine sand.

Surprisingly, the desert supports much plant life—yucca, squawbush, rabbitbrush, cottonwood. Many animals, including badger, skunk, fox, rabbit, coyote, gopher, and kangaroo rat, make excursions into it.

~~Permanent~~ ~~inhabitant~~ ~~of~~ ~~the~~ ~~dunes~~ ~~is~~ ~~the~~ ~~bird~~ ~~called~~ ~~the~~ ~~white~~ ~~sand~~ ~~spoon~~ ~~bird~~ ~~(left).~~



WHITE SANDS



CPYRGHT

CPYRGHT

