

Paul
9 Oct 89
15:28

53° 00' 50" N.

9° 36' W.

003
05)
1528

A. miss break

53° 50" N.

9° 36' W.

A. across
windy

53° 50" N.

9° 36' W.

Confusion Break



A. across
flat
hard

B. land c

A. windy
wiggly
fluid

B. water c

- S-2
- white c
- cream color c
- Striated c
- rough
- sandy c
- rounded
- Vegetated c
- lobes cft
- Wind sounds c
- pink cft
- red cft
- Podded cft

Stonehouse
Jrelark

bygone
cool c
flavors of
flower smells pc
insect sounds of
sighing sound
creaked pc

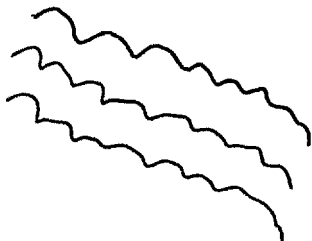
A02 Break
red/white
sandstone
formations

A02 Break
Green liane
plate on old
in

53° 50" N.
9° 36' W.



A. *surrobor*
descendens
solid
B. *argentata*
confusion break



S-2
lumpy pc
bumpy c
nodules c
mineralized of
sparkly of
intensities ? c
networks S c
crambs by c
weathered c
abandoned c

A1 break

A02 Break
dry break
street town

bleak
bygone
abandoned

ROL Break
desert, weas
windy empty

53° 00' 50" N.

9° 36' W.

miss break

53° 50" N.

9° 36' W.

A. across
across
B. water c

S-2

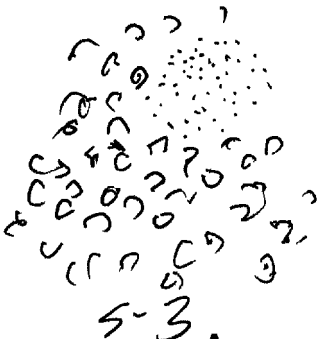
flat c
grey c
ripples c

lip
solid

light grey c
bird sounds pc
fuzzy smell cpr

grainy c
gritty c
brownish c
extruded cpr
jumbled c
glistening cpr
smooth c
lumpy c

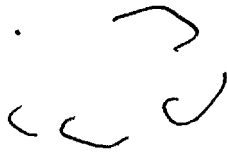
ROL Break
oyster/mussels



ROL Break
limestone core

53° 50' N.

9° 36' W.



A. rounded
solid

B. -

S-2

- Smelly qn
- damp pc
- sandy pc
- diffused pc
- cold c
- hard c
- salty c
- encrusted ~~crustacean~~ c
- loose c
- slippery pc
- bird sounds
- ocean qn
- surf sounds c
- hazy c

AVL break
bird eggs
cannon balls

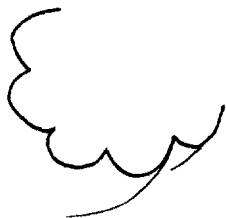
53° 00' 50" N.

9° 36' W.



A. Scalloped
Solid

B. -

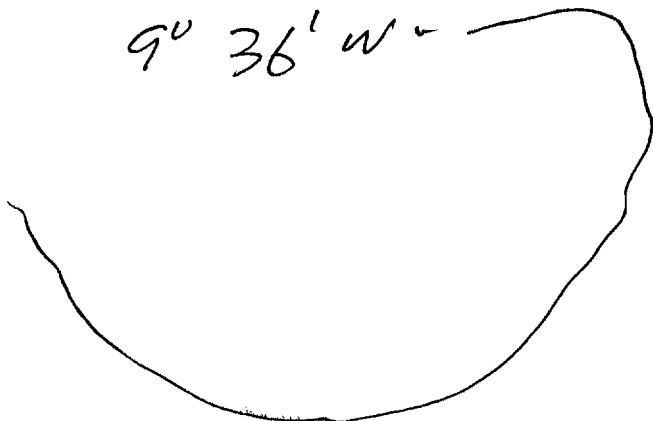


S-2
green c
blue c
red cft
dark brown c
dense pc
metallic
Stone c



53° 00' 50" N.

9° 36' W.



A. around
hard

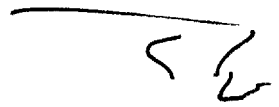
B. -

S-2
open c
broken c
piled c
fractured c
empty c
used pc
rotting pc
lemons pc
crusty
metallic c

lines
corners + edges c
tumbledown c
Fragmented c
blasted

AOL Break
ruined crusader fort
by the sea

53° 00' 50" N.
9° 36' W.



A. corners, angle
50:50
B. structure c

S-2
grey
flatsurfaced c
round c
deep cfr
tall cfr
big pc
overgrown pc
'blocky c
loose pc
piled c
rounded
manmade c
solid rock c
→ topped c
hollow c

AOL Break
1 wall in ruins
in southwest

AOL Break
ruined lighthouse

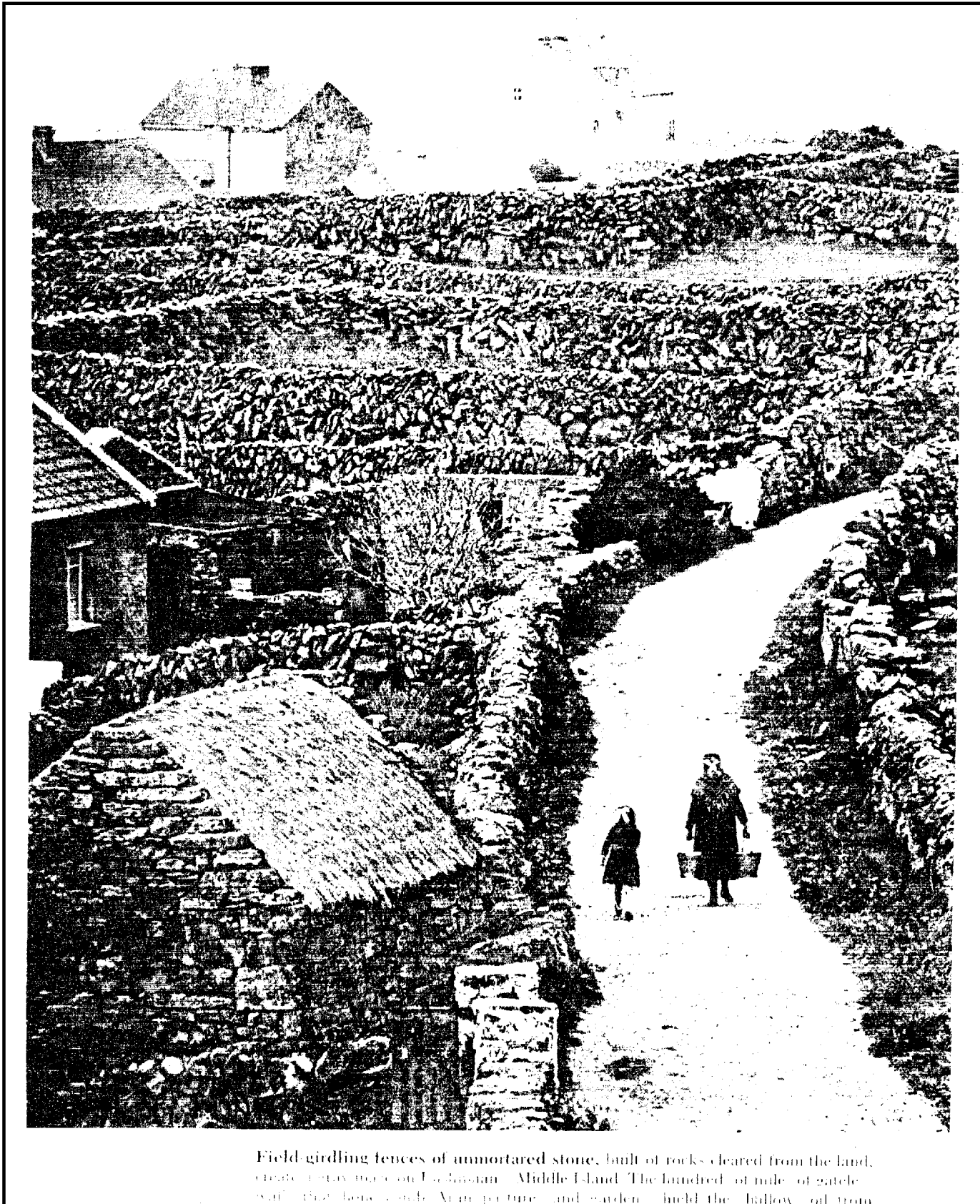


from
piles c
open

break
Radar Domes
Alutians

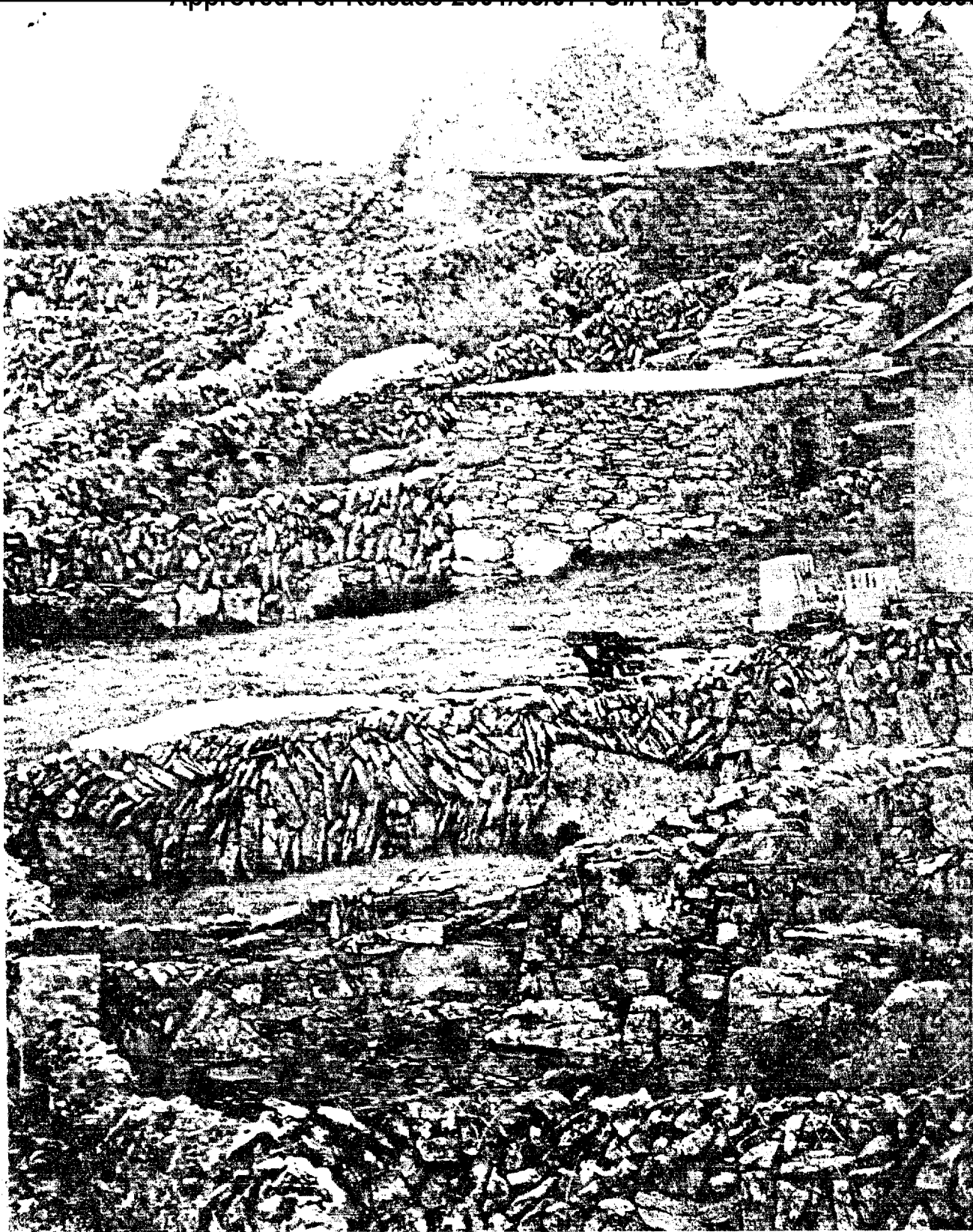
end

CPYRGHT



Field-girdling fences of unmortared stone, built of rocks cleared from the land, create terraces on Loughsann, Middle Island. The latched, 6-ft. wide gate is built of stone, and a wooden post and rafter hold the hallow, and from

18



buffeting winds. Passage to a field means climbing the fence or taking part of it down. The child and shawl-clad woman trudge toward a distant water pump — one of the daily chores on this timeless isle that even today enjoys few modern conveniences.