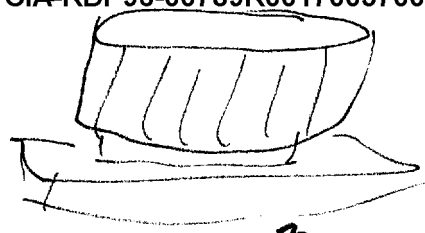


Paul
18 October 84
14:02



003
051

8° 35' S.
119° 52' E.

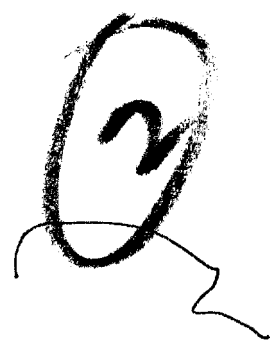


1402
1420
A. angular
solid
B. Structure of

S-2
mounded

Break

8° 35' S.
119° 52' E.



A. up arrow
down
solid
B. land c

S-2
red gr
Vertical stone pc
angular

A. dropping
solid
B. cliff pc

scaly c
granular c
rough c
faceted pc
dark brown pc
mottled c
green c
swills

Lyons

ADL Break
shell like salt
water

7° 35' S.
119° 52' E.



A. winding fluid
B. water c

S. 2
muddy brown c
flowing off
vegetated c
pitted off
austere c

A. across solid
B. land c
land water interface

ADL Break
Colorado River
canyons

8° 35' S.
119° 52' E.



A. around solid
B. land c

A. flat splashy
B. water c

S. 2
green c
blue c
blades/dark color pc
weathered
rising steeply c
flat topped off
crumbling off
leaves pc
rocks chattering sound off
whit sands c
cool

flora swell pc
animal sounds c
arched shape off

abrasive pc
rounded c
Voluminous c
with pc
massive pc
with open c
apart in
aesthetic

AI Breaks
Very repetitive
ganic
granular

ADL Breaks
Zion National
Park

S-2
reddish brown
over Sienna

Summary
land/water interface
stone/rock
facets
corals where
vegetation
sandy
steep component
sounds
abrasive
rounded
wind
open space
weathered
rough texture
animal sounds
dust, facts

muddy brown
vegetation along edge of water
Austers
blue

ADL Break
Swamp

8° 35' S.

119° 52' E.



A. across

Squidly

B. Confusion Break
Swamp + Swamp

AVL Break

CS component

Swampy jungle / diff face
Amazon

8° 35' S.

119° 52' E.

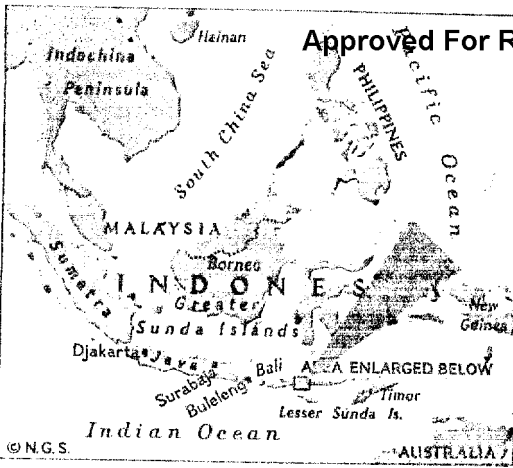


S-2
9 run

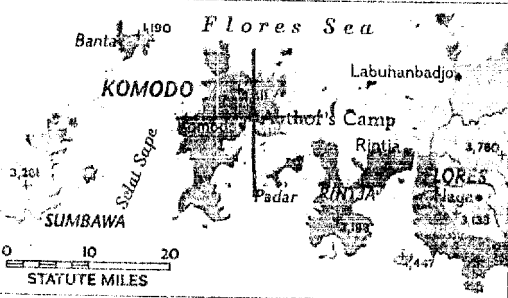
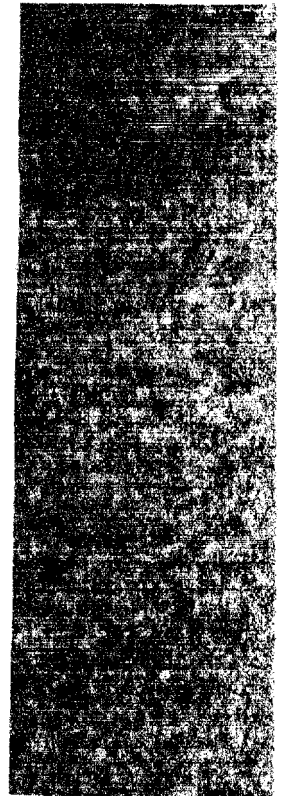
A. choppy
soft

B.
Confusion break

Lizards of Komoc



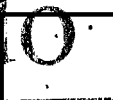
Gleam of gold on the hide of a newly hatched Komodo dims with maturity. "The 21½-inch baby weighed next to nothing," said the author. It coiled inside a shell the size of a goose egg.



Realm of the dragons: Green tone shows the giant lizards' tiny kingdom.



Their agility belying their bulk, two Komodo dragons advance on the bank. Like crocodiles and alligators, they never slither across dry land but always rise up on their legs to move. Wrinkled



folds of skin on their flanks will stretch smooth after a full meal. When angered, the reptiles puff out their necks. Speckles of bony calcium make the scaly hide valueless for handbags and shoes.

CPYRGHT

CPYRGHT



KODACHROME © NATIONAL GEOGRAPHIC SOCIETY

876). About a thousand of the lizards—largest in the world—survive on four tropical islands: Komodo, Rintja, Padar, and the southwestern corner of Flores. Hoping to save *Varanus komodoensis* from extinction, the Indonesian Government has proclaimed part of Rintja a dragon sanctuary and has restricted export of the giants.