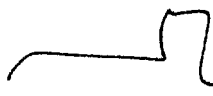


Paul  
30 Oct 84  
16:35

37° 15' 54" N  
105° 19' 11" W.

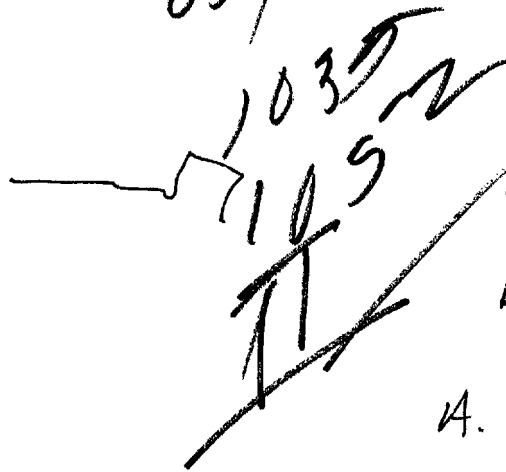


A. up and down

ADL Break  
Volcano

003  
05)

37° 15' 54" N.  
105° 19' 11" W.



A. air & fluid  
B. water

A. angle c  
solid

B. building

Confusion break

37° 15' 54" N.  
105° 19' 11" W



A. Confusion  
break

Sand dunes

37° 15' 54" N.

105° 19' 11" W.



A. ground pe  
solid c

B. land c

S-2

Very brown pc

Slightly mounded c

bordered c

irregular pc

Clay pc

~~smooth~~ c

water c

green c

dark color c

undulating terrain c

winding channels c

rocks ~~pc~~ c

cold c

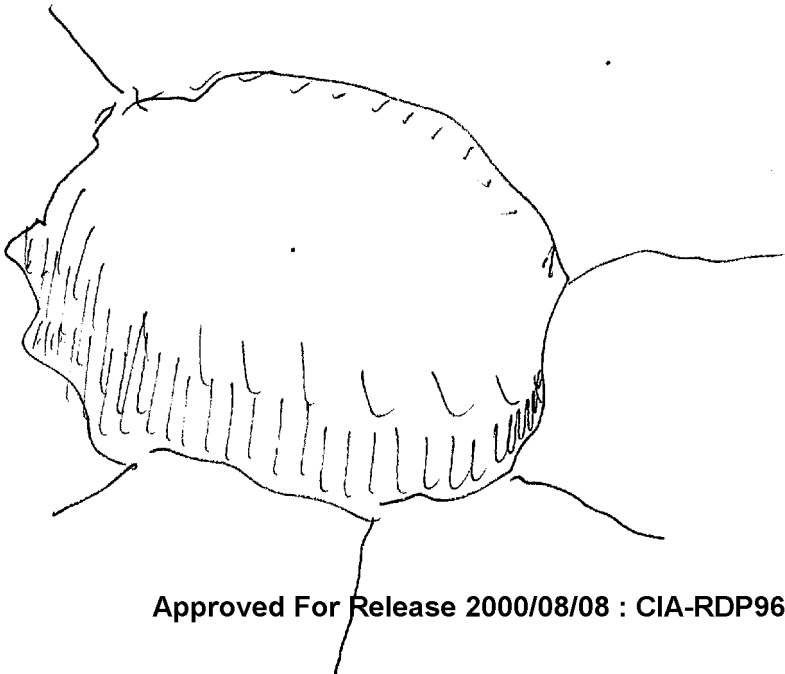
lack of vegetation c

open c

wide expanse

flat

AI barren feeling



37° 15' 54" N.

105° 19' 11" W



S-2

projecting pe  
raised c  
flat c  
rounded pe  
bluff edge  
light color c

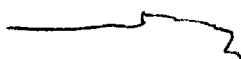
A. curving land  
solid

B. -

ALL Break  
glacier

37° 15' 54" N.

105° 19' 11" W.



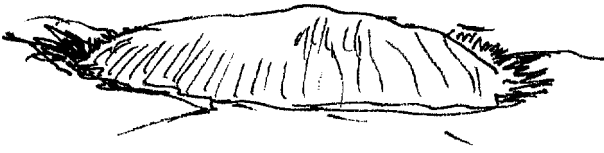
S-2

rising pe  
flat c  
white c  
regular pe  
gravelly c

A. across  
hard c

B. -

ALL Break  
Tiptfield



37° 15' 54" N.

105° 19' 11" W



S-2  
blade rrc  
angular rrc

A. across  
plate  
B. lance

A. curving body  
Solid  
B.-

ADL Break  
coal outcropp. by

37° 15' 54" N.

105° 19' 11" W

S-2

A. cross up  
hard c

B.

Adl Break  
mesan  
Indian Ruins

37° 15' 54" N.

105° 19' 11" W.

S-2

grey c  
concrete  
flat c  
pebbly c  
red c  
pink c  
orange pc  
wind rounded pc  
dry c  
sandy c  
whitish pc  
granular surface  
sandstone  
molded c

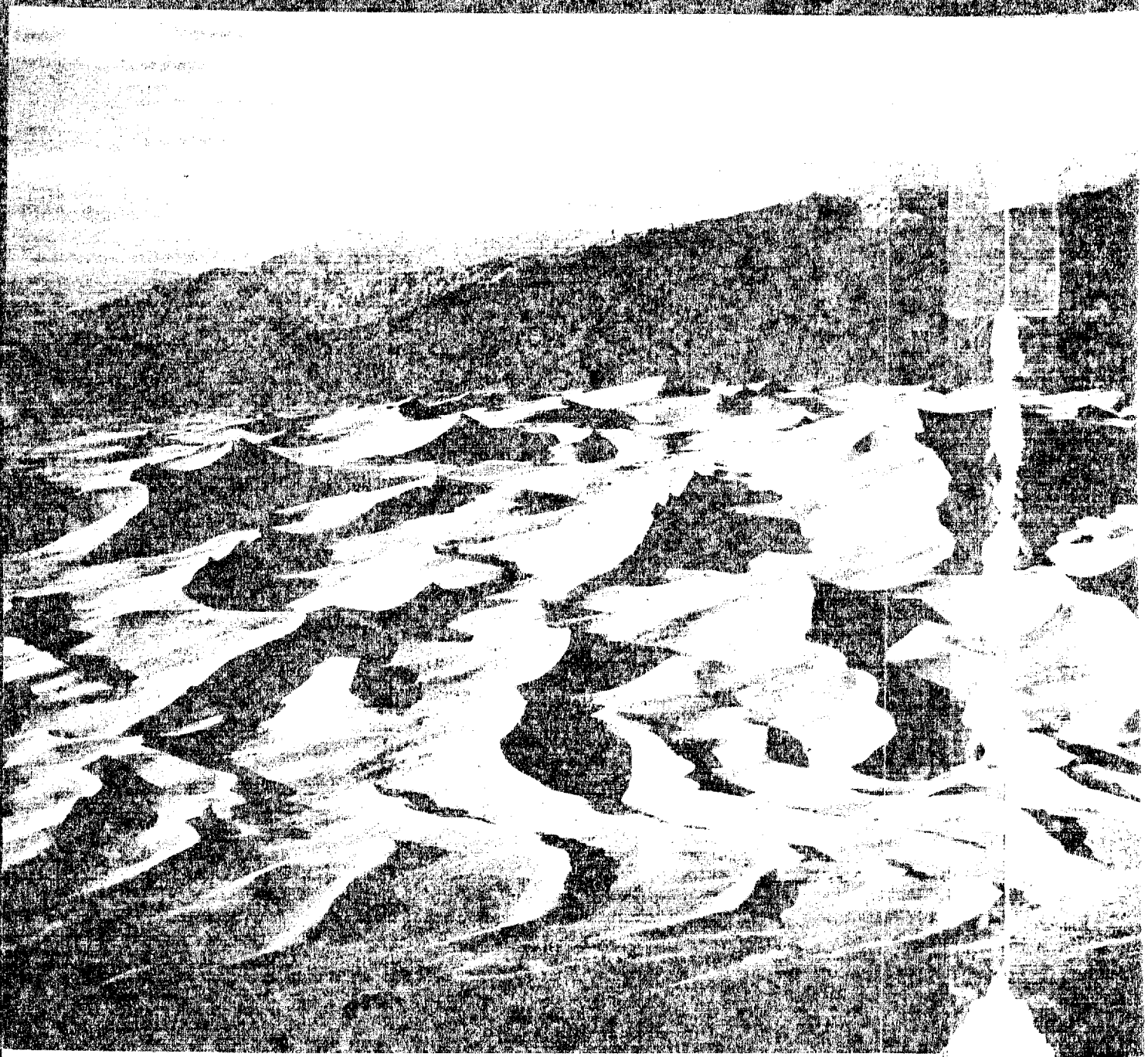
A. cross up  
solid

B.

H/O Break  
Sandstone formation

end

Sandstone formation



*Worthy companion to the Sangre de Cristo Mountains, Great Sand Dunes National Monument evokes its own ever changing, majesty as it blankets an area*

*of 50 square  
1 cm as has*

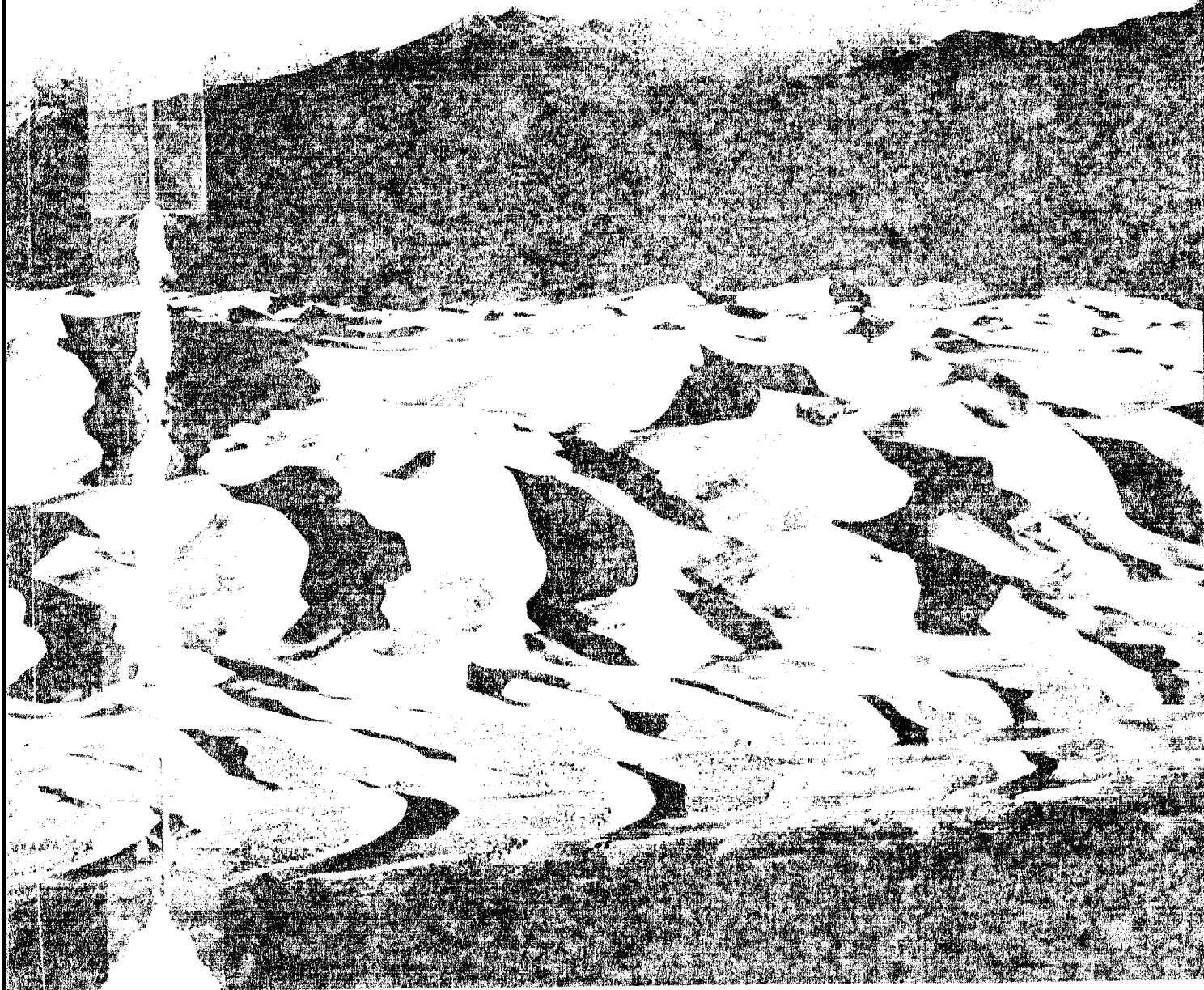
and built a retort to extract shale oil. The 650-million-dollar investment is partly offset by a contract with the government to provide oil for defense use. Union may learn much that will help make shale viable — someday.

**T**HERE'S A CAFE in Maybell and a gas station where you can fill up. In far northwest Colorado these are amenities not to be lightly regarded. And

between Maybell and the Utah line, 62 miles on Highway 518, there's not much else.

I took that road to the northern end of Dinosaur National Monument and camped by the Green River. This is a few miles downriver from Browns Park, where Butch Cassidy and his gang sometimes hid when not robbing banks. Blessed with abundant grass, Browns Park also was a gathering place for Indians. In the late 1830s it held a

small tin  
Park:  
the shot  
evidence  
charcoal  
that trap  
"I'll s  
offered.  
clay of  
coal. Gl



of 30 square miles. Upon discovering the debris in 1950, explorer Zebulon M. Pike described  
it as having an appearance similar to the volcanic ash that is left over after

small fur trading post, Fort Davis. Located  
Park ranger Gilade Ross wondered where  
the short lived fort stood and if it had any  
evidence beside the Green. He looked for  
charcoal, chunks of iron, and any other  
that trapper traded to Indians in the

"He show you where it was. A day  
offered. Soon we were slipping into the  
day of the riverbank, down and out of  
road. Gilade interrupted the

"Sometimes you can still find a beard," he  
said. Then "I find, I see one." A tiny bit of  
or unworked iron amid the gravel.

Gilade slipped off in shirt and with an  
iron or iron bar, which fell into the water. He  
grabbed his nose of the handle was just a  
couple of inches. It felt went out in the de-  
nished, saying "That's Colorado for you. A  
piece of iron or iron bar, and often not to  
be found."