

Paul  
20 Nov 84  
10:09

31° 19' N.  
35° 21' E.



003  
051

1009

1022 B.

An angular  
slope

S-2  
brown pe  
irregular c  
sloping pe  
sharp edges cft  
vertical lines pe  
layers c  
dark grey pe  
fissured c  
curved pe  
high c  
wide c  
immense c  
coming over  
AI Break grandiose

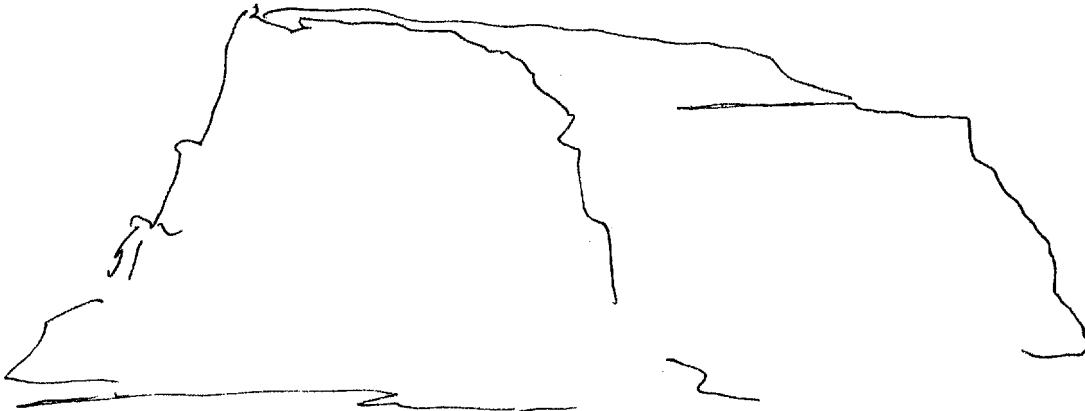
rust red pe  
rocks c  
smooth fls  
washed c



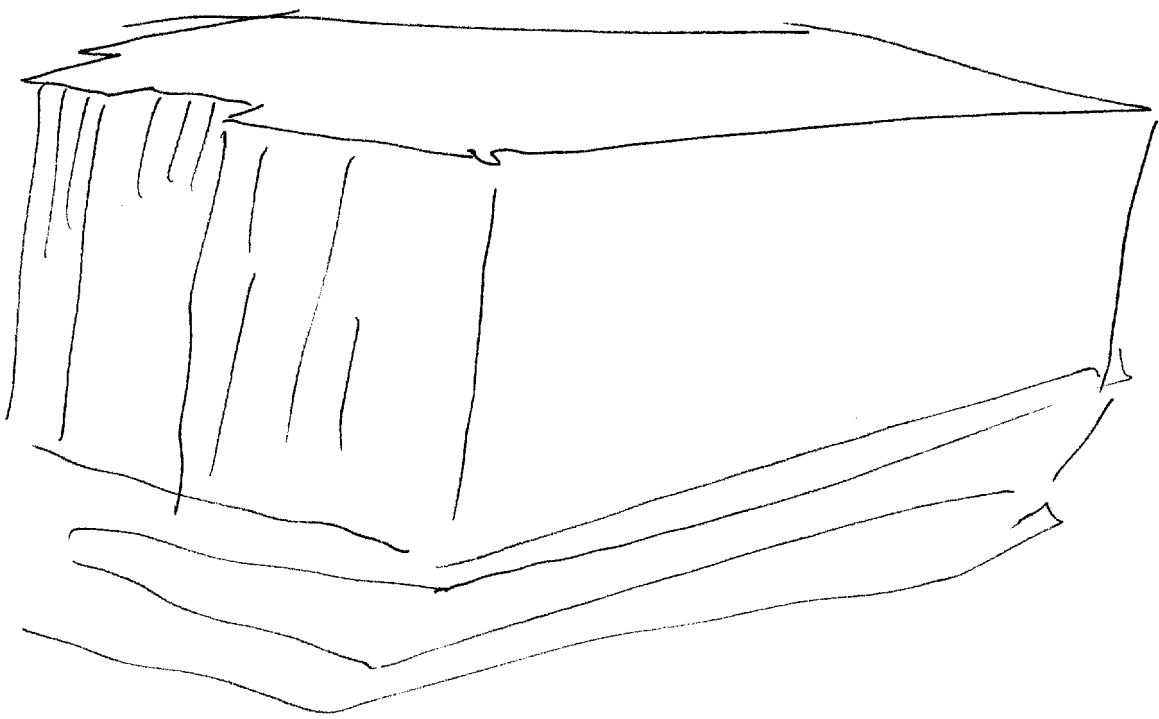
Foresty, Masada  
above the  
Dread Sea



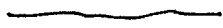
GA-3



AOL Break  
half-down at  
Yosemite



31° 19' N.  
35° 21' E.



A. across  
fluid  
B. water n  
Conformable break

31° 19' N.  
35° 21' E.



A. across  
unconform  
B. sand &c

S-2  
light tan c  
clay c  
waxy c  
deserty c  
light vegetation on  
undulating off  
blocky c  
disjointed off

AVZ Break  
How Simulated

31° 19' N.  
35° 21' E.



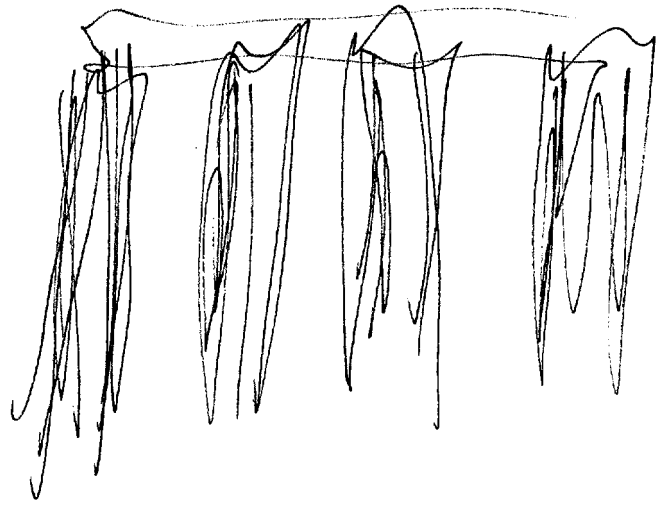
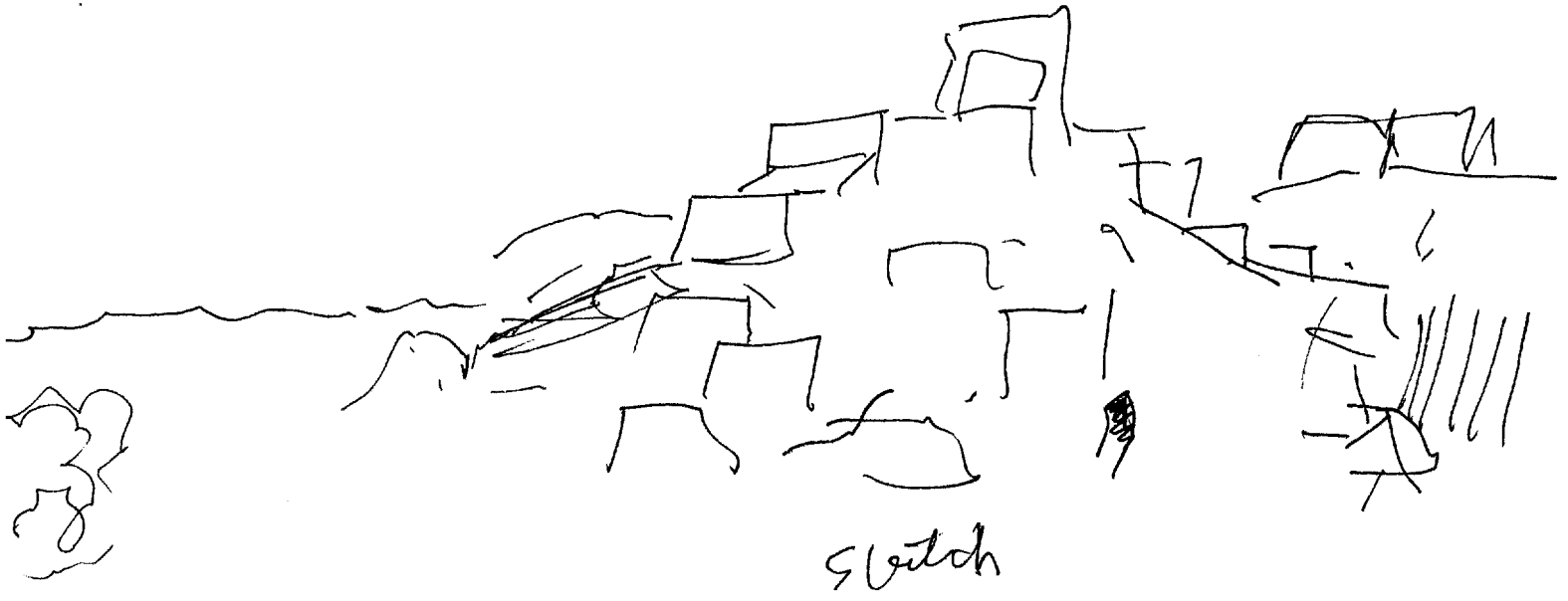
A. stepped  
solid  
B. structure c

S-2

corners c  
rough hewn c  
tumbled c  
Olive color pe  
abandoned pe  
dyeit smell c  
piled c  
pyramidal cft  
levels c  
massive c  
solid c  
monumental c  
By Breckle Impression

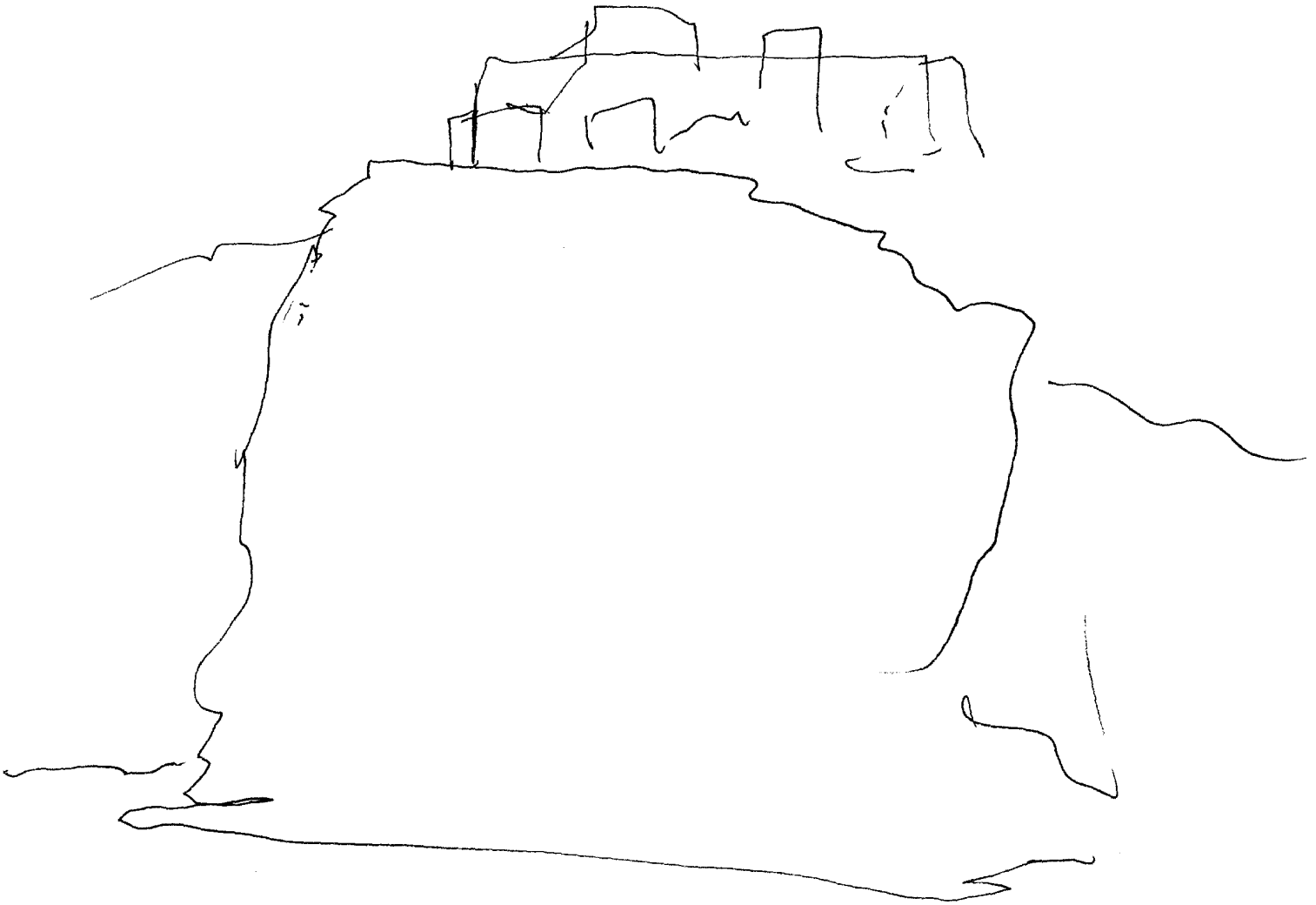


OK.



ADL Break  
Auropolis

Summary  
 structure in a desert setting  
 layers vertical lines  
 fissured, chiseled. high, wide, immense, towering,  
 monumental, blocky, rambling, rough hewn,  
 ochre,



*Sketch*



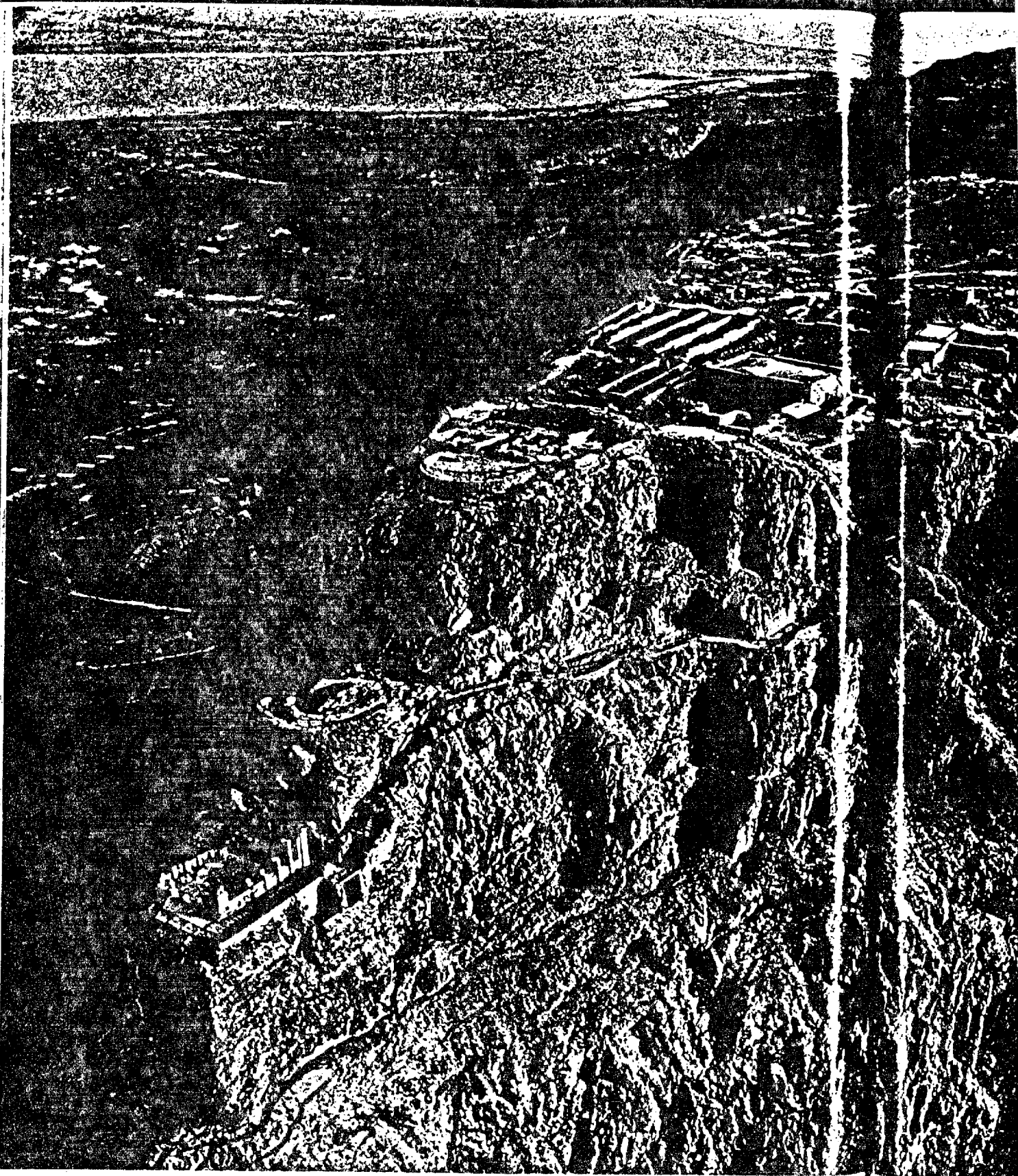
Structure on a  
high terrain feature

AOL Break  
for tower guardhouse  
& valley

1022

Site end.





*Shiplike fortress of Masada rides at eternal anchor above the Dead Sea.*  
Approved For Release 2001/03/07 : CIA-RDP96-00789R001700350001-5