

Class C



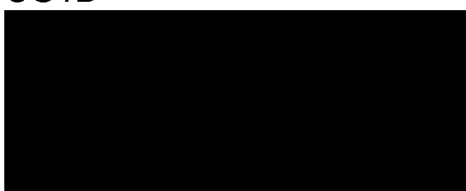
Paul
18 Jan 85
Et. M. de m.
10:01

+

003
051
1001
1044

A. across
curving
around
Solid
B. Structure

SG1B

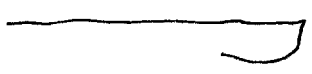
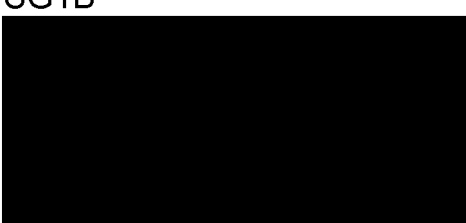


S-2
rounded
jointed
Very light colored pc
bumpy
Wedge shaped cfr
grey pc
metallic cfr
carbon
furrowed

4

Hot Break
Carved/loose
non-possible curving
site

SG1B



A. across angle
around
Solid
B. Structure

S-2
D-ann
lumpy
hard
concrete
flat
curving
vertical pc
air
jointed
bed
angles

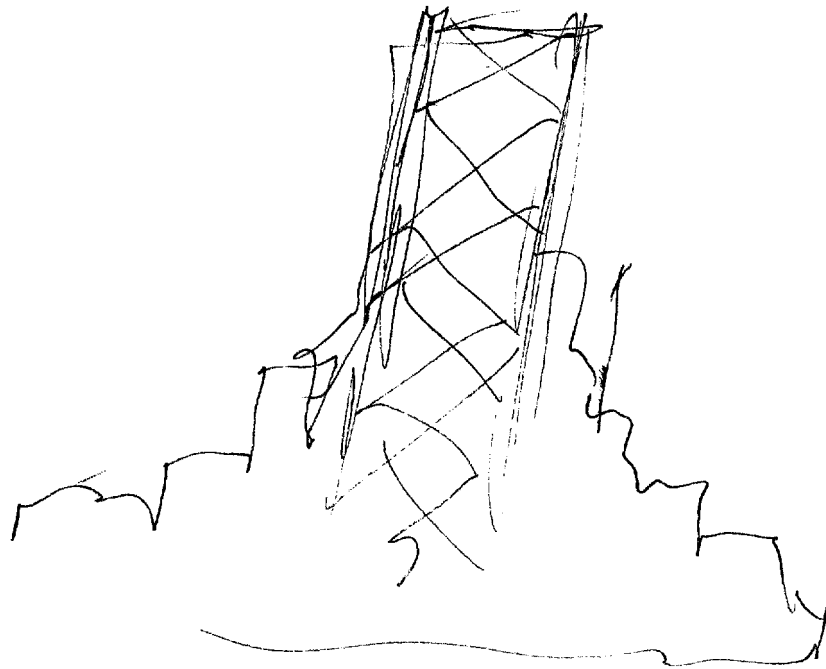
Human Biological
Research
Facility

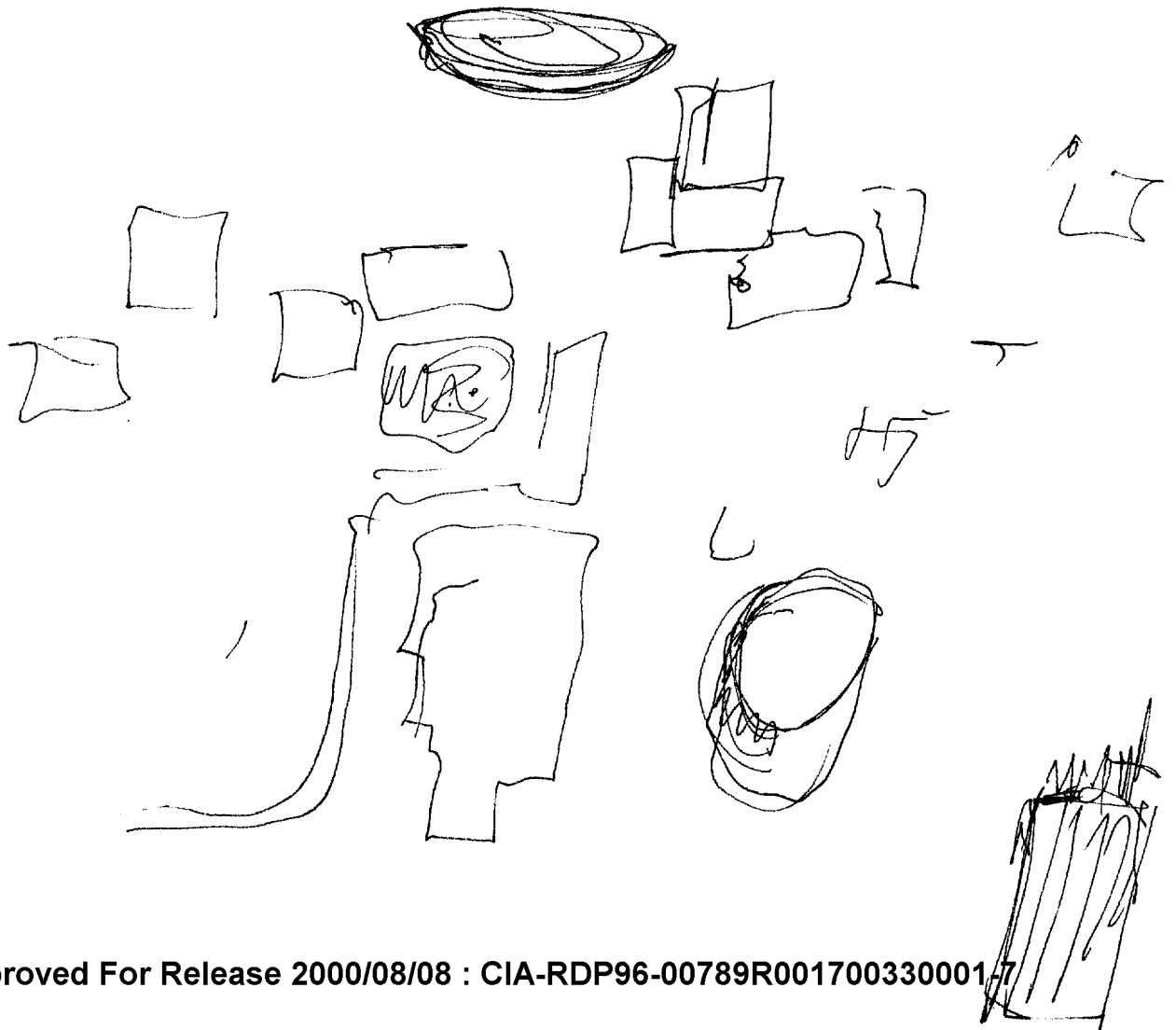
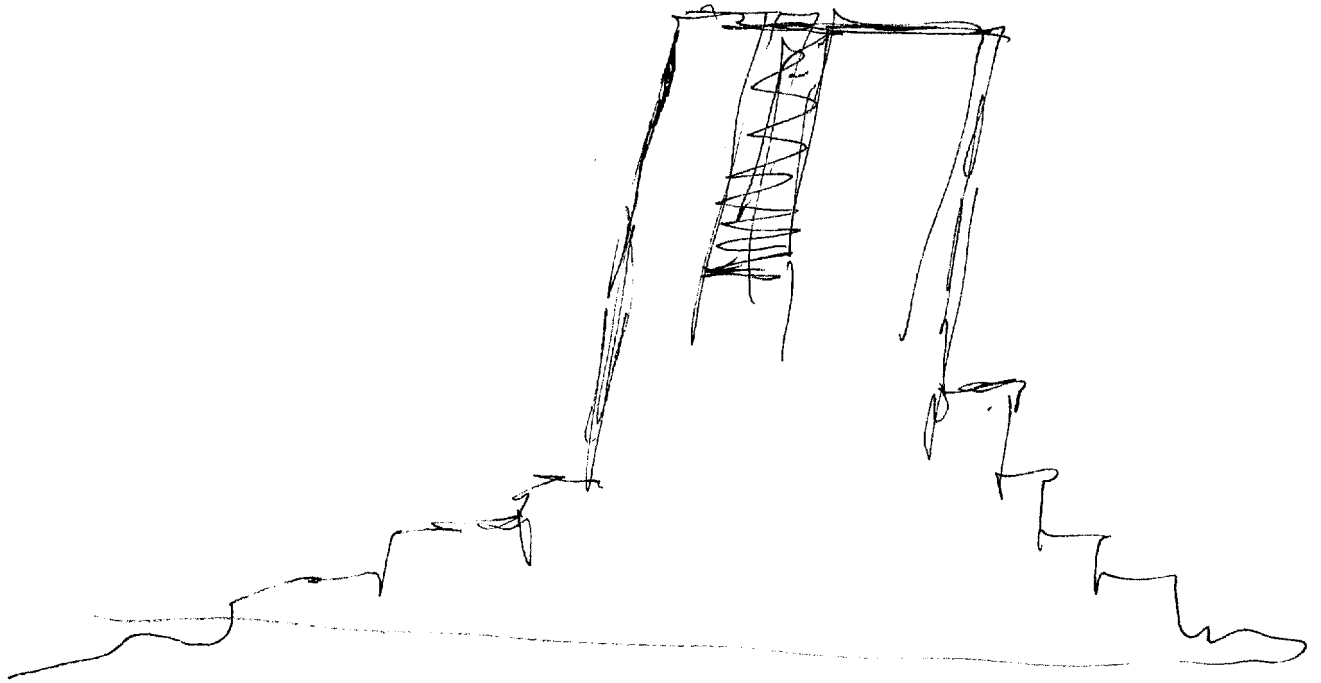
will be open
exposed

*Proposed
project up*

*H2 break
interested*

*AOL Break
space launch
gaskets*



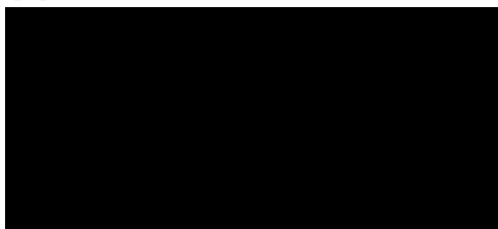


S-2

A/S

air
joints

SG1B



A. across ^{angle} up,
solid

B. building

S-2
red
white
silvery
blank faced
windowless

S-2

D

A I

B I

T

I

AOA A/S

red
white
silvery
blank faced

windowless
building
complex
piping
cable
humming

light color
white

air
laboratory c
filtered up
white
glass partitions

S-2
hospital
green

Compartments
pc

animal
tables
penicillin
feeding pc
experimental
surgical
AXL Break
B/W

official e
from curtain c
polished pc

inside the building something is perceptible.



- A. crowd
curry
plaster
- B. equipment
pc

translucent
green

~~translucent~~
translucent
table
fulfilling
stainless
steel
equipment

nonifaris
valiantine
ALBONALC
like a
CITISCAN

cylindrical

injection pc
monkeys
interiors sterile pc

S-2 D AI EI T I AOL ALS

scientific
secret
captives pc

fear

bewildered
dispassionate pc

experimental

Series

biological
genetic

people
two groups
of people
experimenters,
subjects

pain
curiosity
despair
ambition

directors

research
military

specimens
virus
bunt
microorganisms
red liquid

pursuit
subtle

potentially

the nature of the research at the site is perceptible.

AI Breach
Refarious

medical
chemical pc
immune systems cft
shock resistance
refarious
exploitive
expensive pc
open-ended

filters

resolution pc
single minded pc

Cubicles pc

optics cfr
microscope
electronics
computers
analyzers
oscilloscope
analyzers

blood spectrum

Aggravation
uncertainty

Sickness
~~st~~

Surgery cft
behavioral pc
conditioning pc
psychology

S-2 D A I E I T I ADL A/S

chrome
shiny

suspended

beds
white
walls

beds

Voices
animal
sounds

doctors

not Break
like
incubators

thermo clave

Summary

A building or complex of bldgs. in an iron curtain country. Used for scientific research + experimentation, involving the military. 3 groups of people - directors, who were associated with ambition; experimenters who were avid, resolute, single minded + dispassionate; and subjects, who were fearful, bewildered, uncertain, fearful and full of despair + trepidation. Pain was associated with the experiments. Laboratory animals were present. Patients were captives. Research was secret, w political implications. Medical + laboratory equipment present included monitoring equipment (radioactive); blood spectrum analyzers; surgical tables; oscilloscopes; optical equipment; electronics + computers; filters; and autoclaves. Sterile environment were involved, as was some application of Sonics; research with genetics + microorganisms seemed to be involved also. Behavioral, conditioning, + psychological, + institutional aspects seemed to be present.

Airfield associated with site.

Human biological research facility.

site end

10:46