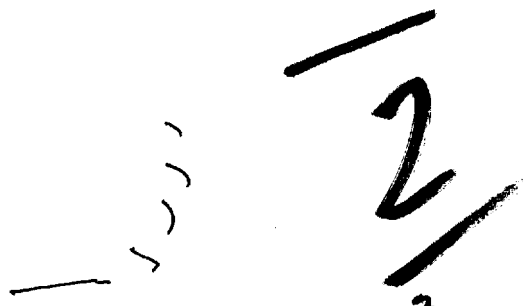


Paul  
5-531 Jan 85  
Ft. Meade, and  
earth  
10:02

35° 40' N.  
51° 26' E.



2  
003  
051  
1002  
14

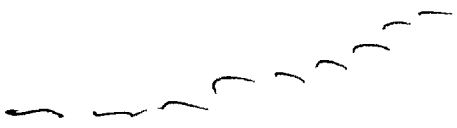
A. miss break

35° 40' N.  
51° 26' E.



A. along  
confusion break

35° 40' N.  
51° 26' E.

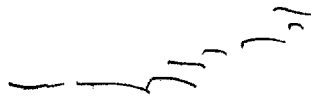


A. rising  
solid

B. S  
confusion break  
ADL Break  
Structure(s)  
City

US Embassy  
Jehon.

35° 40' N.  
51° 26' E.



A. flat  
solid masonry

B. City

5-2

key  
squares  
rectangles  
wherever  
Cement  
blockwork

cross crossed



S-2 D AI EI T I AOL A/S

dry  
winds

isolated

medical  
"3rd world"

many

people

construction  
purposeful

workers

~~factories~~

factories

heavy industry

hazy  
gritty  
smelly

colored  
smoke

railroads  
steel

ancient

"one great"

alien to  
western culture

huristic/mongolian

people

restive  
calloused

AOL Bk  
muslem

2 national  
groups

natives

"Supervisors"

civilian  
political

military  
presence

AOL Bk  
"high plateau"  
feeling like sandman  
U.S. in white

S-2 D A I E I T I A L A L S

## Summary

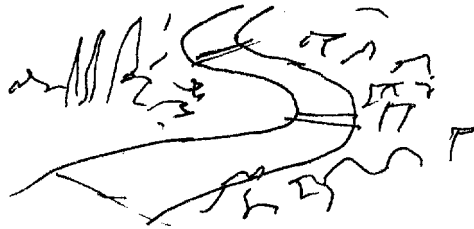
Site is an urban area or city; it is dirty, rundown, made of blockwork, cement, with <sup>rectangularly</sup> interesting streets (grid system); it's cold windy, has abandoned buildings, has many levels or layers, of medium height. It spreads over a wide area, and is occupied ~~with~~ by people who are relatively regimented, resigned to their situation, repressed to a degree, in a semi-isolated, ~~and~~ dry, windy, high-plateau-like area. It is involved with heavy industry, factories, steel, and is smoky (colored smoke), gritty, smelly, and has railroads. The area is ancient, has a Soviet/Asian/S. West Asian feel, + 2 national groups are present - natives, who are primarily workers, + "Supervisors," who ~~control~~ control socially + economically. Elements are primarily Political + Civilian, but there is a military presence. The people further are vestige + calloused, alien to western culture, and may be of Turkic/Mongolian origin. The city was One Great, and is <sup>historically</sup> ancient. Tashkent comes to mind.

AOL Break.

Soviet Space Flight  
Center nearby.

winding

River



Commerce

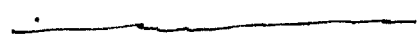
People  
wearing  
Puffy coats

in Bk  
Chinese  
in Korea

Mountains  
in distance

Windswept

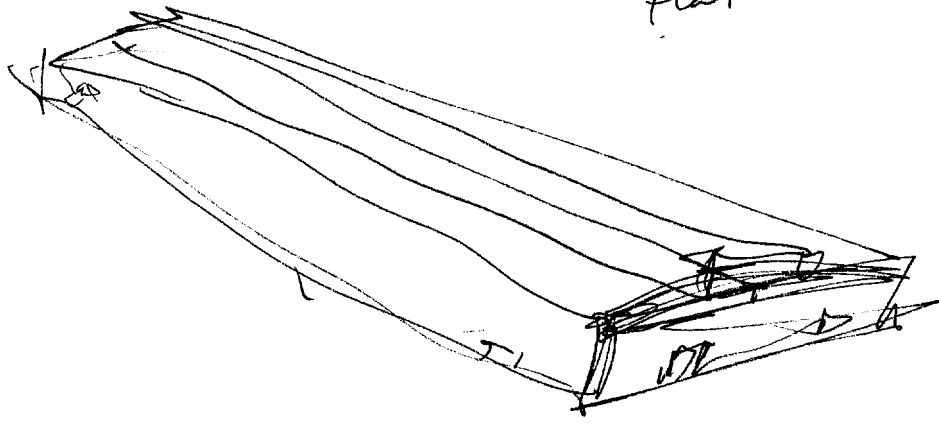
35° 40' N.  
51° 26' E.



A. across flat  
fluid  
B. water

A. hard flat  
manmade  
solid  
B. building

S-2  
grey  
corrugated  
sheet metal  
long  
wide  
low  
flat



AI & B  
interacts

S-2  
metallic  
grey

D AI EI T I AOL ALS  
long

assembly  
naval

AOL Bk  
shipyard 402

long  
very hollow  
inside

S-2

D  
overhead

A I

E I

Cooves

workers

Very busy

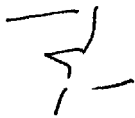
ADL Bk  
Soviet  
spare shuttle

ALS

Inside the building something is perceptible.

A. hand angle  
angular  
manmade

B. machinery



S-2  
green  
plate

green  
flaking  
rounded

rummaging

welding

movable

object

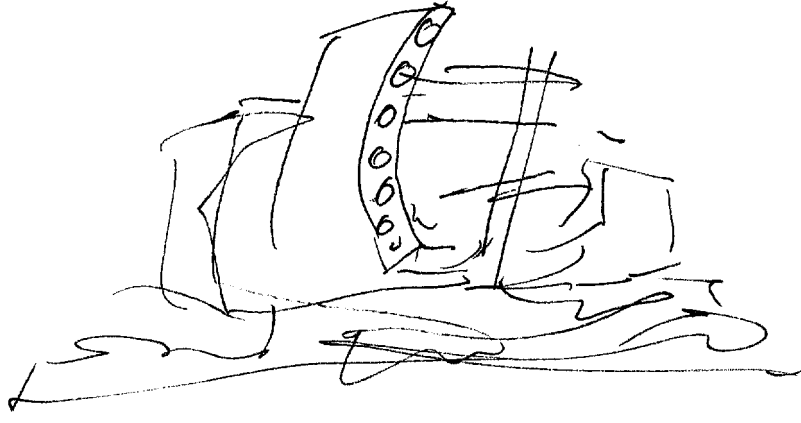
being  
assembled  
in complete

rounded

plates

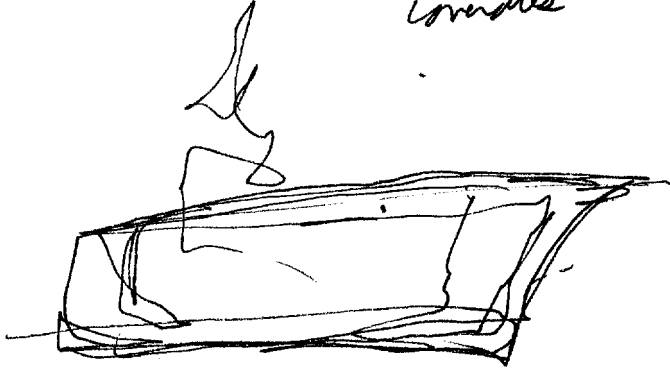
5-2

1/5



scaffolding

people wearing  
hats



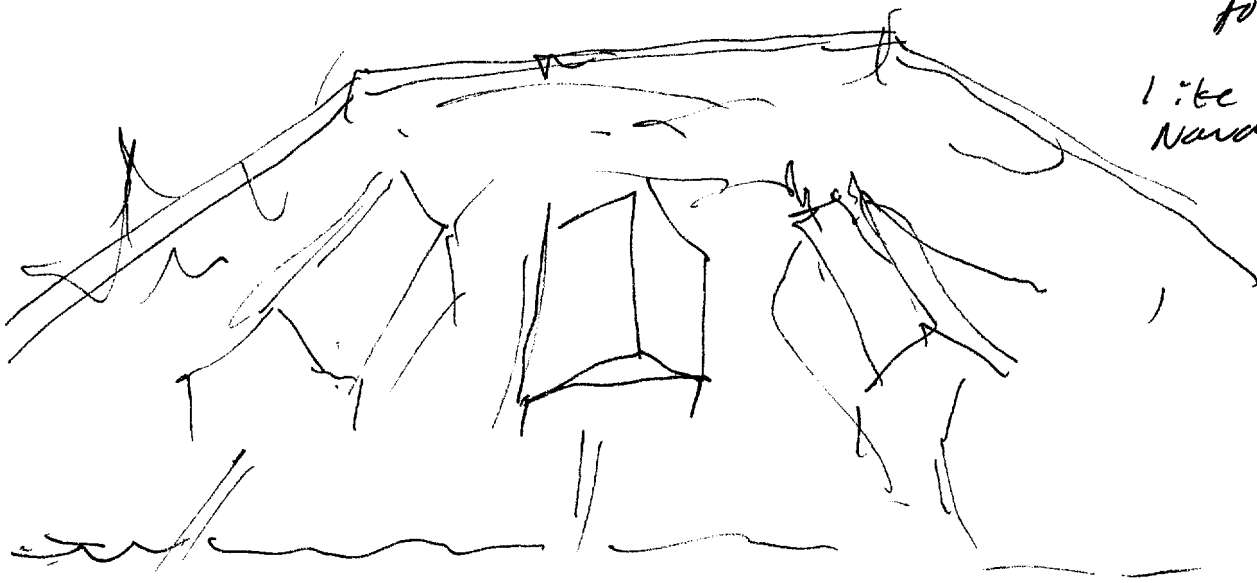
for Bk  
submarine

for Bk  
a/c or  
conies

part of  
complex

for Bk

like Portsmouth  
Naval Shipyard





## 2d Summary

A major river runs from the heart of the city; along river is a large, long, flat, wide bldg within which some sort of construction or assembly is taking place. Large machinery is present, welding is being done, and some large object is the subject of this assembly/construction. Large, curved steel plates are involved in the construction of the object. Some sort of Naval or maritime connection seems to be involved.

end  
10:49

Site was U.S. Embassy, Tehran