

*Handwritten initials and date:*  
20 Jun 88

SECRET/NOFORN - HANDLE VIA SKEET CHANNELS ONLY

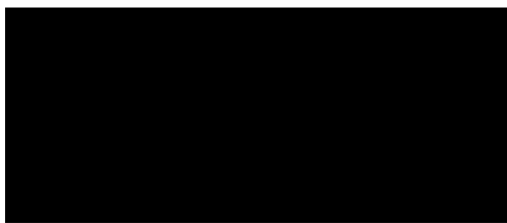
PROJECT SUN STREAK (U)

WARNING NOTICE: INTELLIGENCE SOURCES AND METHODS INVOLVED

PROJECT NUMBER: 0111	SESSION NUMBER: 1
DATE OF SESSION: 17 JUN 88	DATE OF REPORT: 17 JUN 88
START: 0907	END: 1041
METHODOLOGY: CRV	VIEWER IDENTIFIER: 025

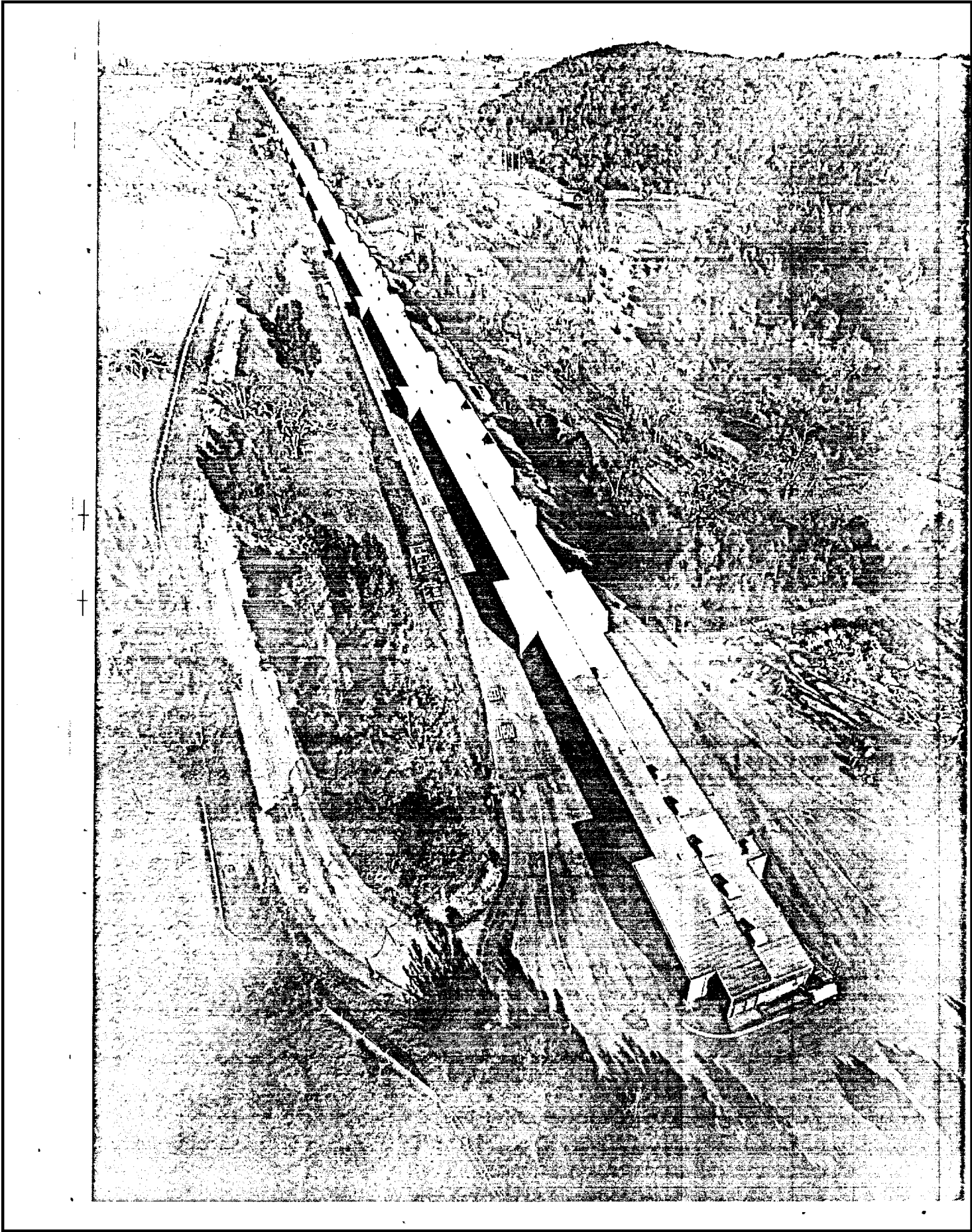
1. (S/NF/SK) MISSION: Stage 3 training. Site was the Stanford Linear Accelerator.
2. (S/NF/SK) VIEWER TASKING: Coordinates 3725/1221.
3. (S/NF/SK) COMMENTS: Although two, single, excellent target-related ideograms were finally produced (see p.7), the viewer habitually begins a session by producing only a single, multiple ideogram relating to the overall site. There is nothing wrong with this as long as the representative, discrete, multiple gestalts are broken out into individual "A" and "B" components. This, 025 fails to do, placing all of each gestalt's motion into a single "A". Consequently, even though 025 is aware that a site is composed of multiple gestalts and (usually) what those gestalts are, the viewer continues to get bogged down in Stage 1 because the all the representative motion is run together. This was a major teaching point in today's session. As far as Stage 3 contact was concerned, 025's performance was excellent. (Stage 4's are beginning to creep into the sessions with greater frequency).
4. (S/NF/SK) EVALUATION: [4] *Handwritten initials*

SG1J



SECRET/NOFORN - SKEET CHANNELS ONLY

CLASSIFIED BY: DIA-DT  
DECLASSIFY : OADR



025

17 June 1988

0907

AV - aircraft  
PI - none

3725  
1221



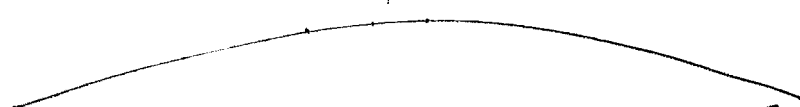
A. up curve  
over  
motion  
B. no-B

3925  
1221



A. descending  
semi-hard  
cont. BK  
rotation  
to left  
B. no-B

3725  
1221



A. out over  
acrop curved  
semi-hard  
B. edge where  
meas

AOL-Bk  
shore line  
water edge  
landscape

3725  
1221



A. out over  
across  
curving  
along  
semi-circular  
B. landscape

AOL-Bk  
dark  
along

S-2  
dark edge

3725  
621

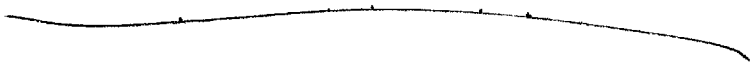
A. light pink  
over long  
semi-hard  
B.W-B

S-2  
long and narrow  
black  
cool  
moist soil  
vegetation - Stage 4  
contour  
green

AOL-BK  
mud like  
AOL-BK  
mud on  
granite  
gravel

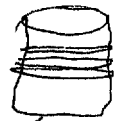
4

3725  
1221



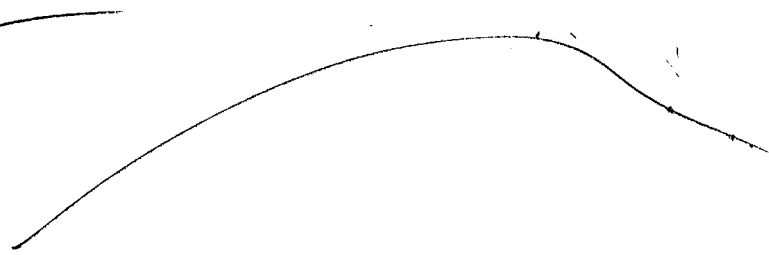
A. across  
covering  
and  
to natural  
B. NO-B

ALL BK  
in can



cloudy rainy  
day - cool  
back

3725  
1221



A. up curve  
over smoke  
down  
contour  
natural

B. land

A. curve  
down-  
hill  
uphill

Too much  
Rk

B. structure  
AOL-Bk  
uphill  
downhill

Walt Hand Structure Interface

375  
1221

52  
Fall

A. Order up  
MOR-made  
hand  
B. Structures

375  
1221

52  
Fall

A. up over  
Speed down  
windings  
crazy  
B. no B



3925  
1221



A. interwined  
going through  
ventral

B. no-B

A. forward  
along  
ventral

MAN-made  
B. no-B

FLY-BK  
strip

S-2

Dark

Asymmetrical

Large

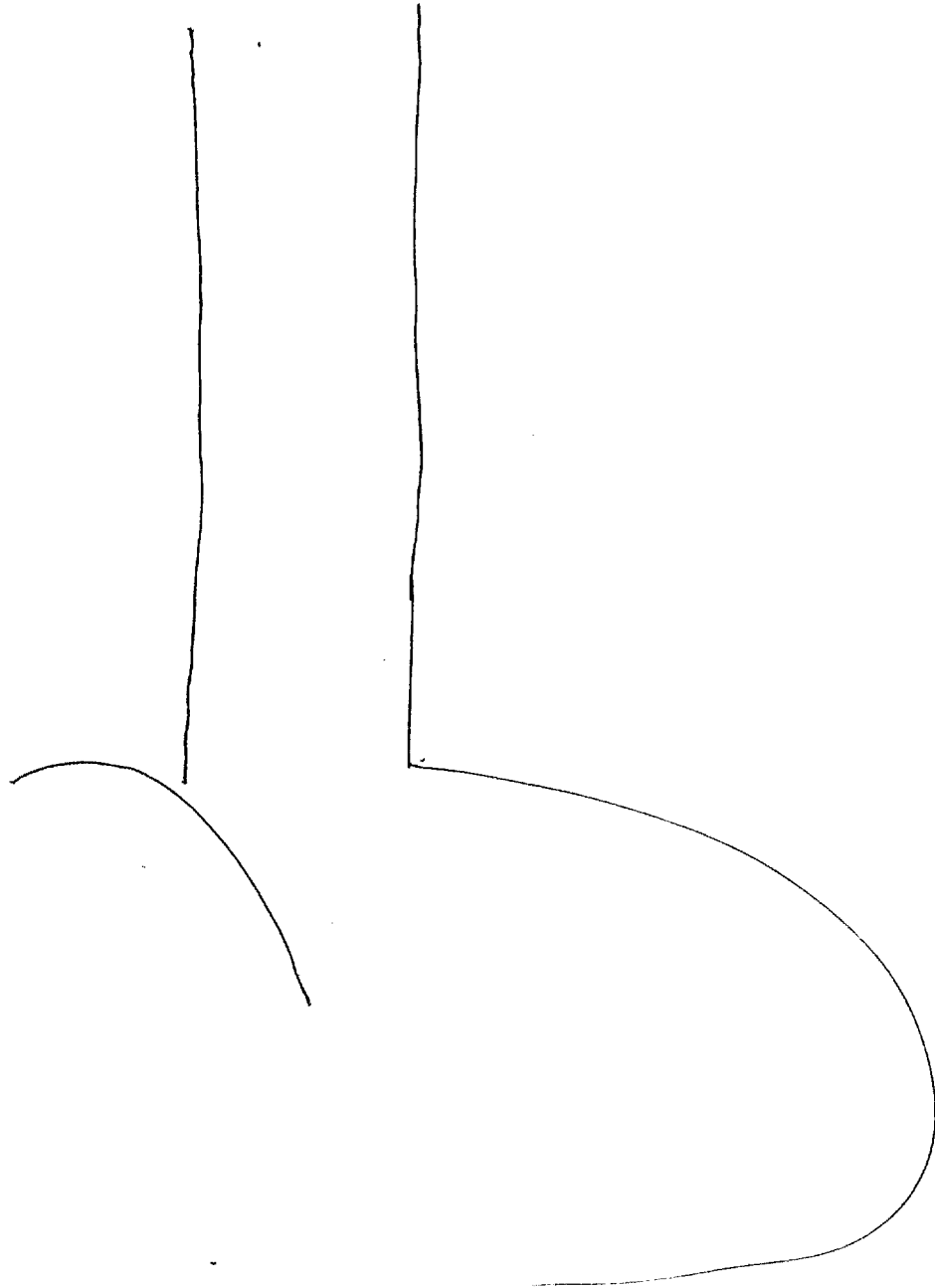
eye in center

Long

surface mottled  
yellow

Black  
ventral

*ACU-BE  
transported to  
Lunch*



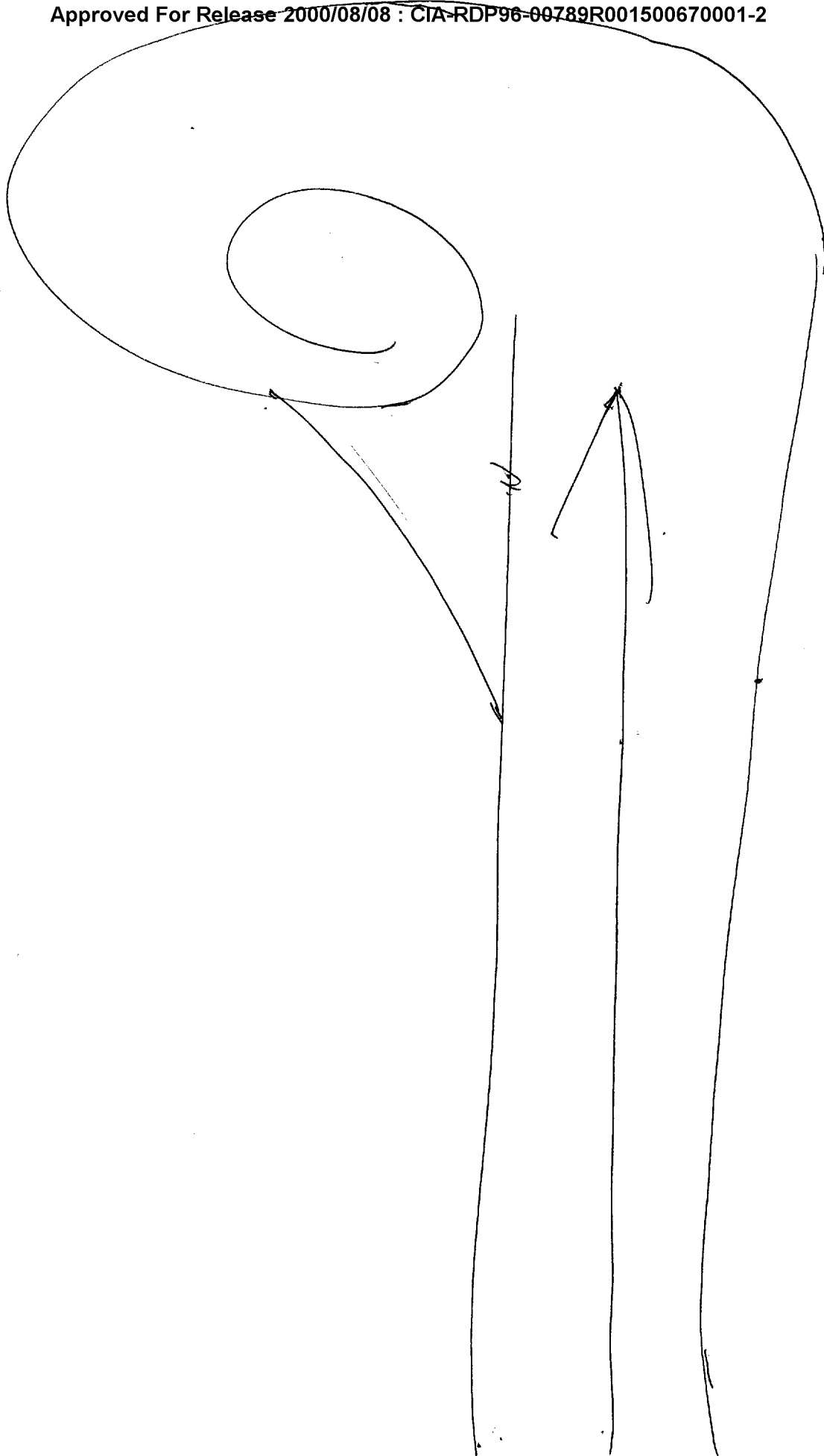
S-2

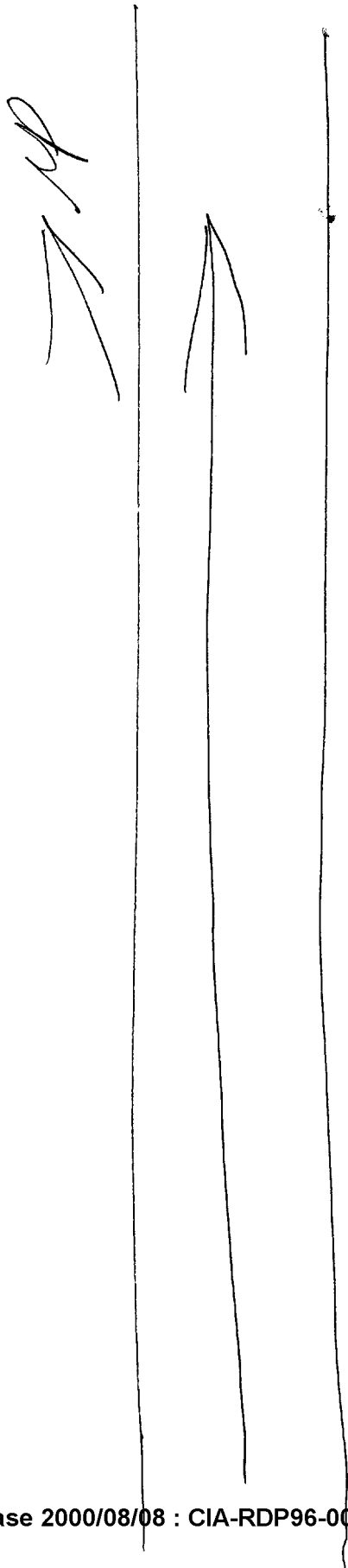


red power  
 like take off  
 energy vibration  
 air being pushed used  
 to help project  
 white  
 blunt rounded  
 top  
 powerful  
 can go fast  
~~can go fast~~

AOL-BK  
 want to get  
 out of its way  
 destruction  
 very powerful

*tail part*





Acrops  
going forward  
on weather  
through  
outward  
and  
man-made  
"wide enough"  
but extending  
long  
~~DATA~~  
horizontal  
surface

9

Site is a water tank / 98 structure

The land is contained - with

There is a structure is long "wide" enough" but extending long" conditions to provide along through cover ground (panels)

10.9/1