

SECRET/NOFORN

D. J. O. J.

PROJECT SUN STREAK

WARNING NOTICE: INTELLIGENCE SOURCES AND METHODS INVOLVED

PROJECT NUMBER: S4 TRNG

SESSION NUMBER: 1

DATE OF SESSION: 881017

DATE OF REPORT: 881018

START: 1200

END: 1240

METHODOLOGY: CRV

VIEWER IDENTIFIER: 032

1. (S/NF/SK) MISSION: Access and describe in a stage one sense training target # 48, Williamsburg, VA.

2. (S/NF/SK) VIEWER TASKING: Encrypted coordinates 372448/764248.

3. (S/NF/SK) COMMENTS: Perfect session, immaculate adherence to structure throughout. 032 paced himself perfectly throughout the session, particularly in stages 1 and 2. His stage 3 sketching was excellent. All his stage 4's can be attributed to the site. Of note are 032's stage 4's of: historic, old, people shopping, spending, walking, looking, interested, amazed, remembering and gathering information. At the end of the session 032 was told to move to a position 20 miles above the site and to report what he saw, he executed the sketch on page 11 which is an accurate rendering of the Virginia coastline. This sketch is of stage 6 quality. 032 was then moved to a position 40 miles above the site where he reported that the site was in the northern hemisphere, the eastern part of North America. The session ended with 032 attempting a stage 7 (see page 12). He is still locking his mouth in an open position, which prevents consonants from forming. This should be overcome with practice.

Consonants

4. EVALUATION: *1.3*

HANDLE VIA SKEET CHANNELS ONLY
SPECIAL ACCESS REQUIRED

SECRET/NOFORN

CLASSIFIED BY: DIA (DT)
DECLASSIFY ON: OADR

AO - Yes
OLD BUILDING
PI - Yes
Congestion

~~PI~~
032
17 Oct 88
1200L

372418
764242

A. up. single
ACROSS
Hard mm
B. STRUCTURE

372418
764242

A. up single
ACROSS
Hard mm
B. STRUCTURE

52
Red
Blue
grey
Black
Rough
Lines

AOL Break
Baron

372445
764202

A. up angle
ACROSS
Hard - mm
B. STRUCTURE
Conf Break
mm vs. natural

372445
764202

A. up angle
ACROSS
incline up
Hard - mm
natural
B. STRUCTURE

S2

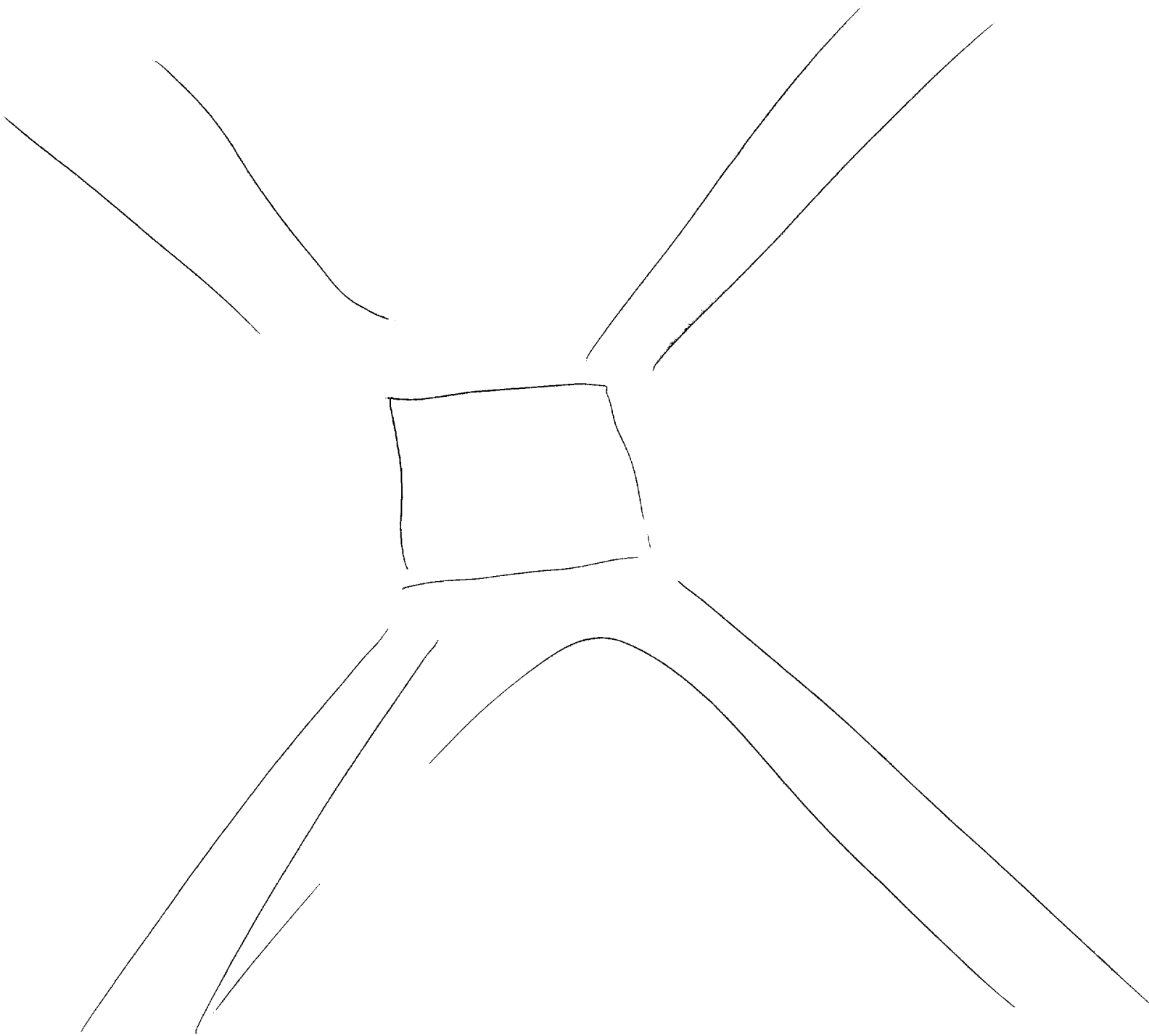
Yellow
Red
Gold
Rough
Smooth
lines
worn
windy sand
kicks
lines
diagonals
step diagonals S4
curic S4
flat
lines

372445
76445

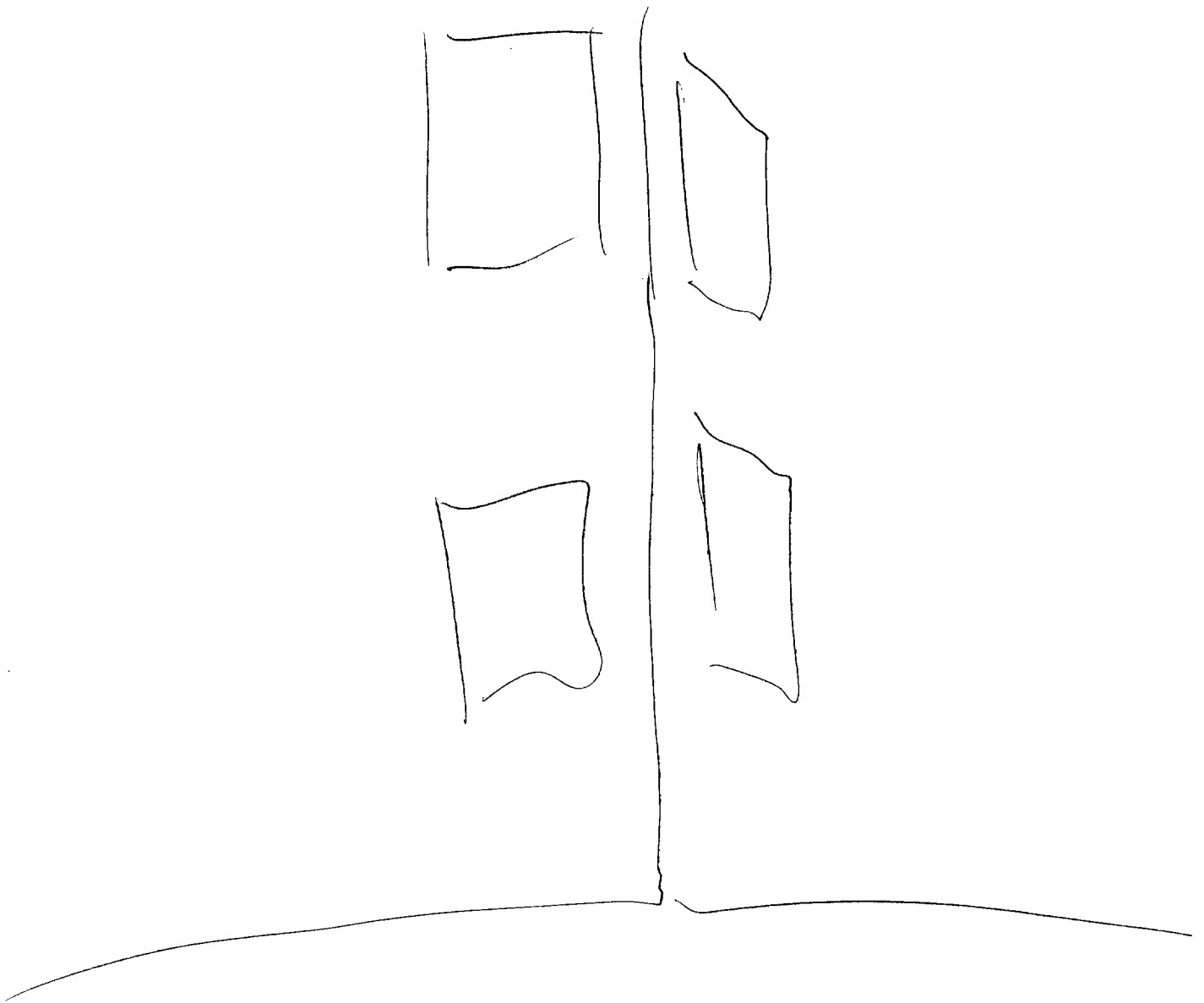
A. up - single
across - inc.
up.
Hard - not
man made
B. STRUCTURE

SZ
warm
voices
flat
lines
events
diagnals

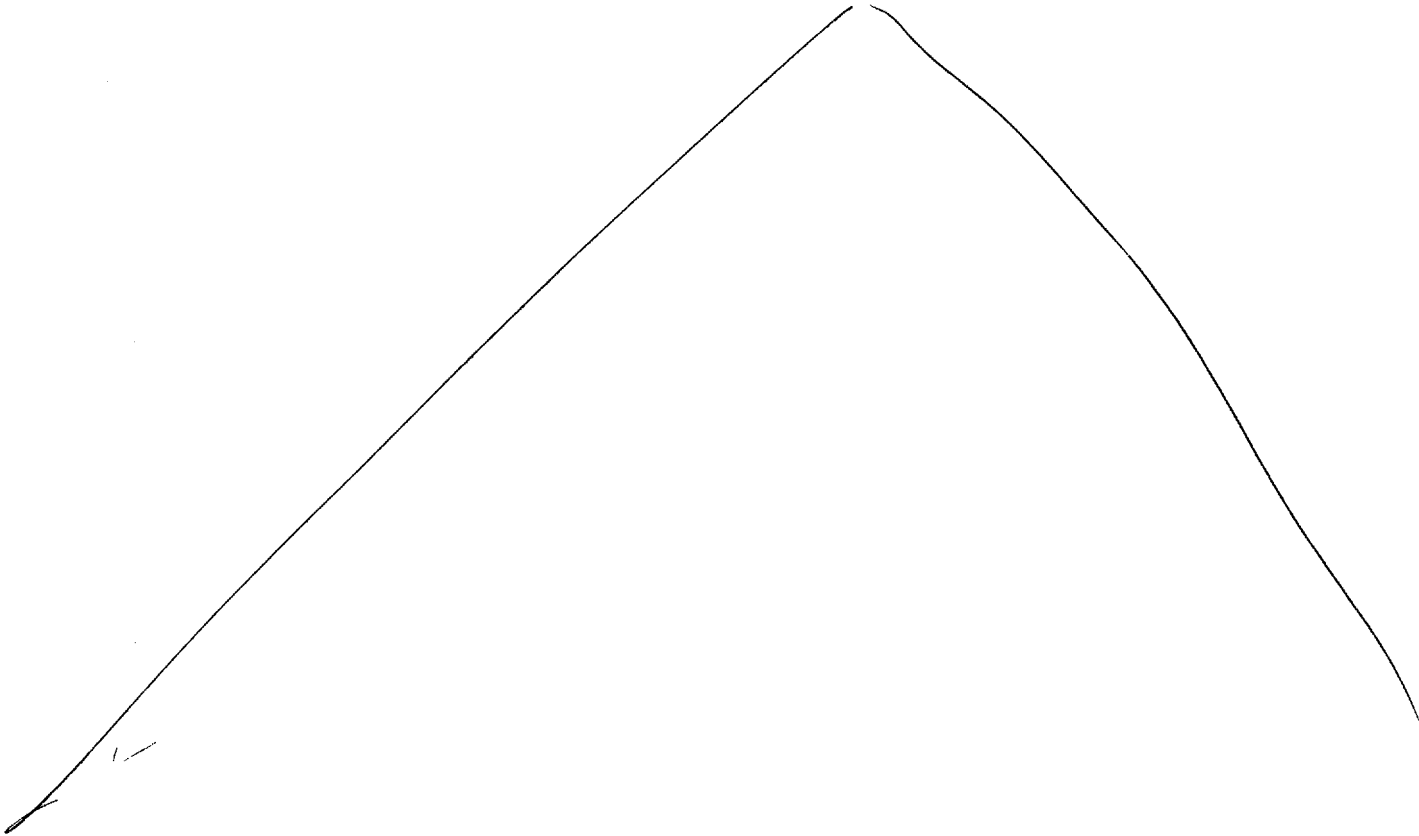
AI Break
makes me feel like
I have vertigo
up high looking
down on
something



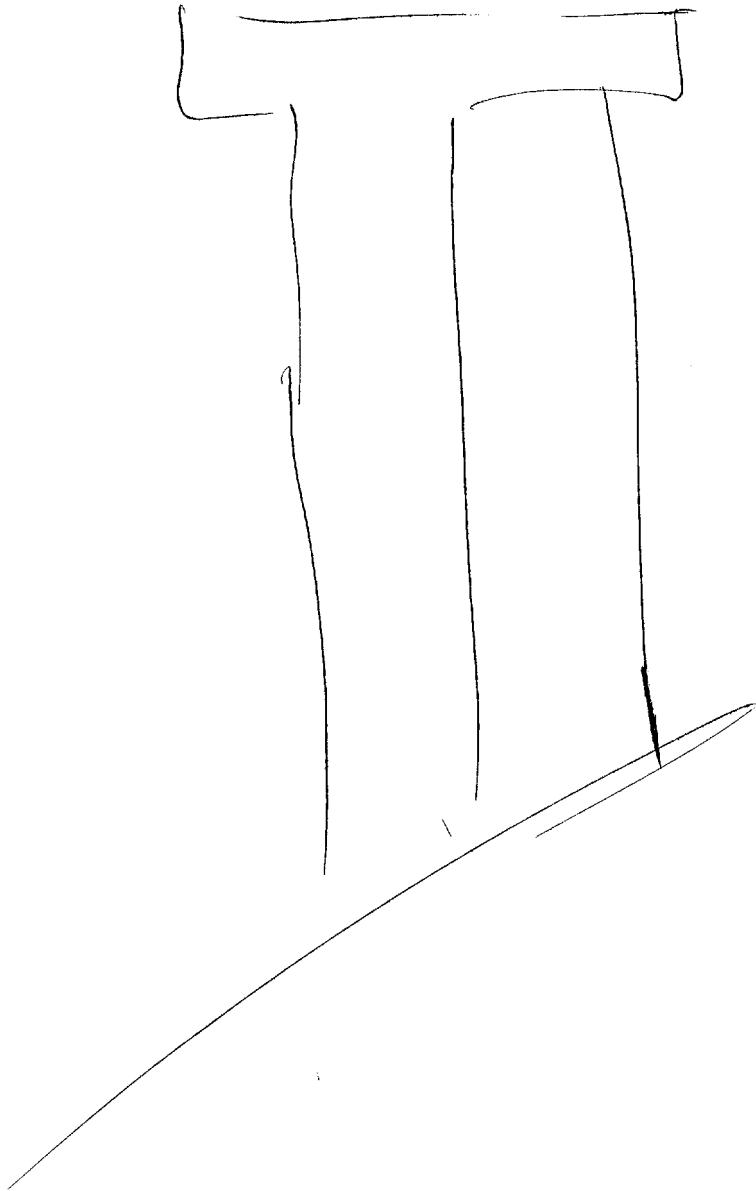
Page 5



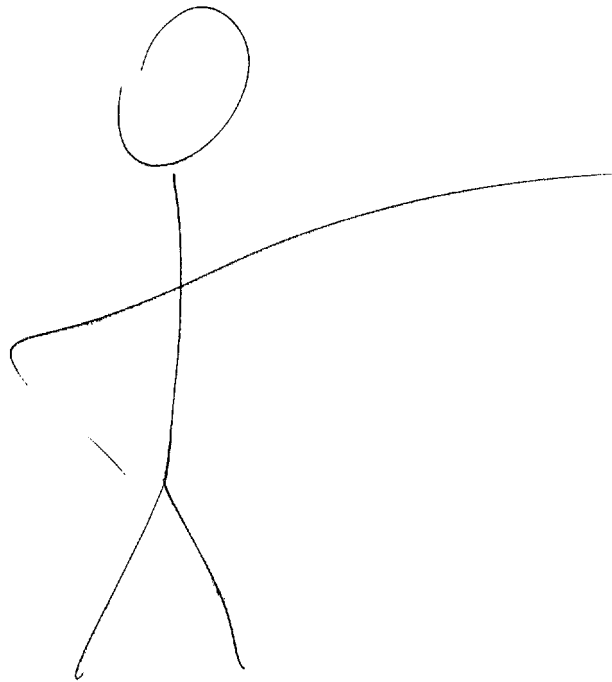
6



7



8



SZ

D

AF

· EI

T

I

AOL

A/S

red
gold
rough
smooth
lines

CUBIC
shanted

INTERESTING

white
Bright
Warm
windy

cubic
Tall
short
square

green
amber

WOOD
METAL

old
new

AOL BREAK
Like a
check ✓

outside
uncovered
Hollow

stone ✓
wood ✓
grass ✓
money ✓
People ✓

lines

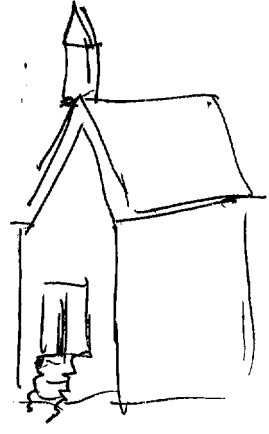
Hungry
Informed
Interested

money ✓
music ✓

OLD

Grey

CUBIC



INSIDE
OUTSIDE

PEOPLE
FAMILIES

Interested
Spending
Walking
Looking
Mourning

AOL ~~REAR~~ SIGNAL
Buildings.

Buildings

Amber
red,
Green.

[INSIDE]

smooth
glassy
rough

cubes
old

People clustered ✓
glass
wood
dust ✓
Historic ✓
Antiques

old
small

grown

Small
cubie

people

AMAZED
Interested
Proud
Happy

Spending

Remembering

Gathering
Information

STONES

Stacked

SMALL

CLUTTERED

[~~From~~ 20 miles up]

BAY OR
INLET

WATER

LAND



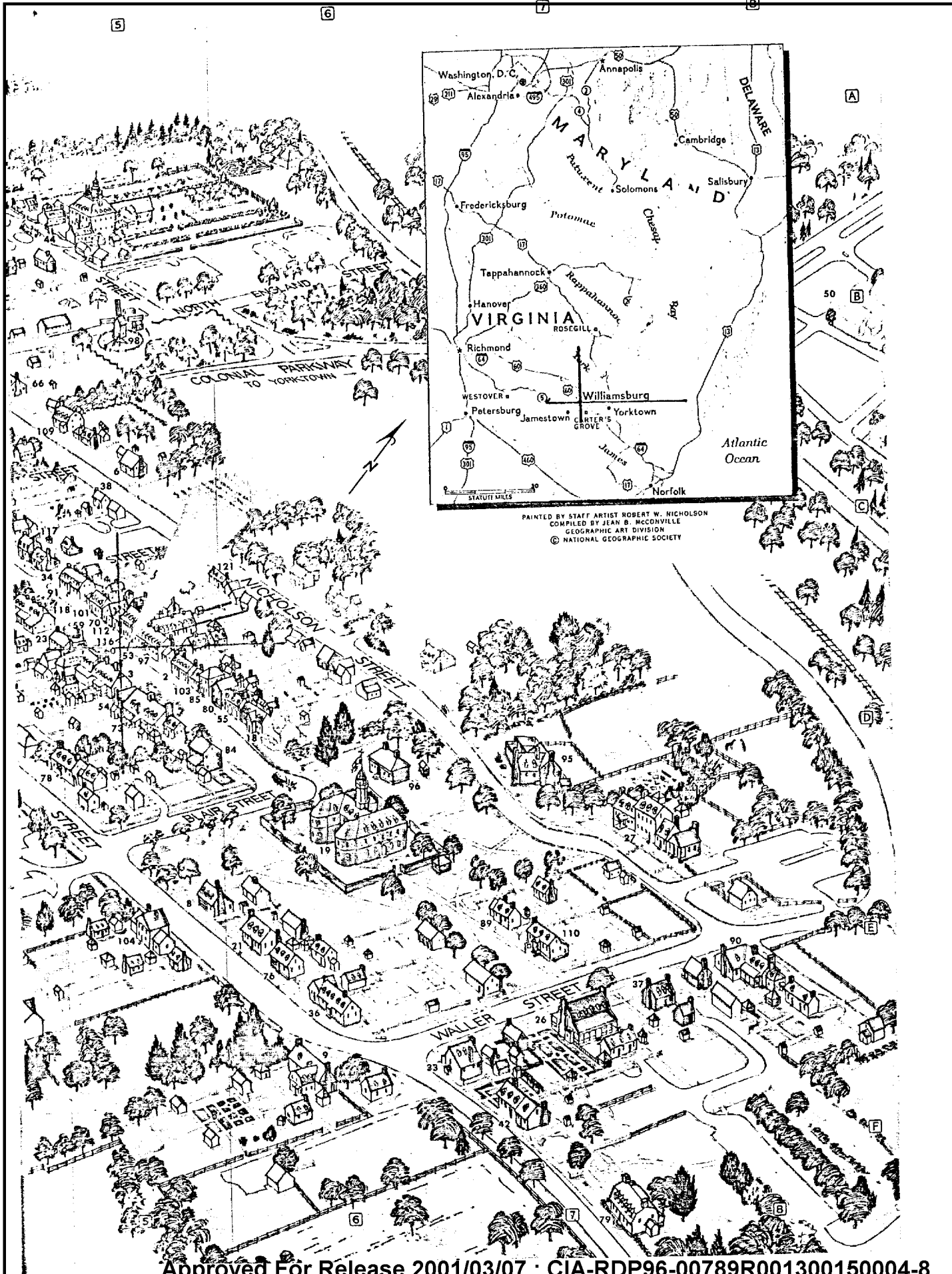
TERRIT

[40 miles up]

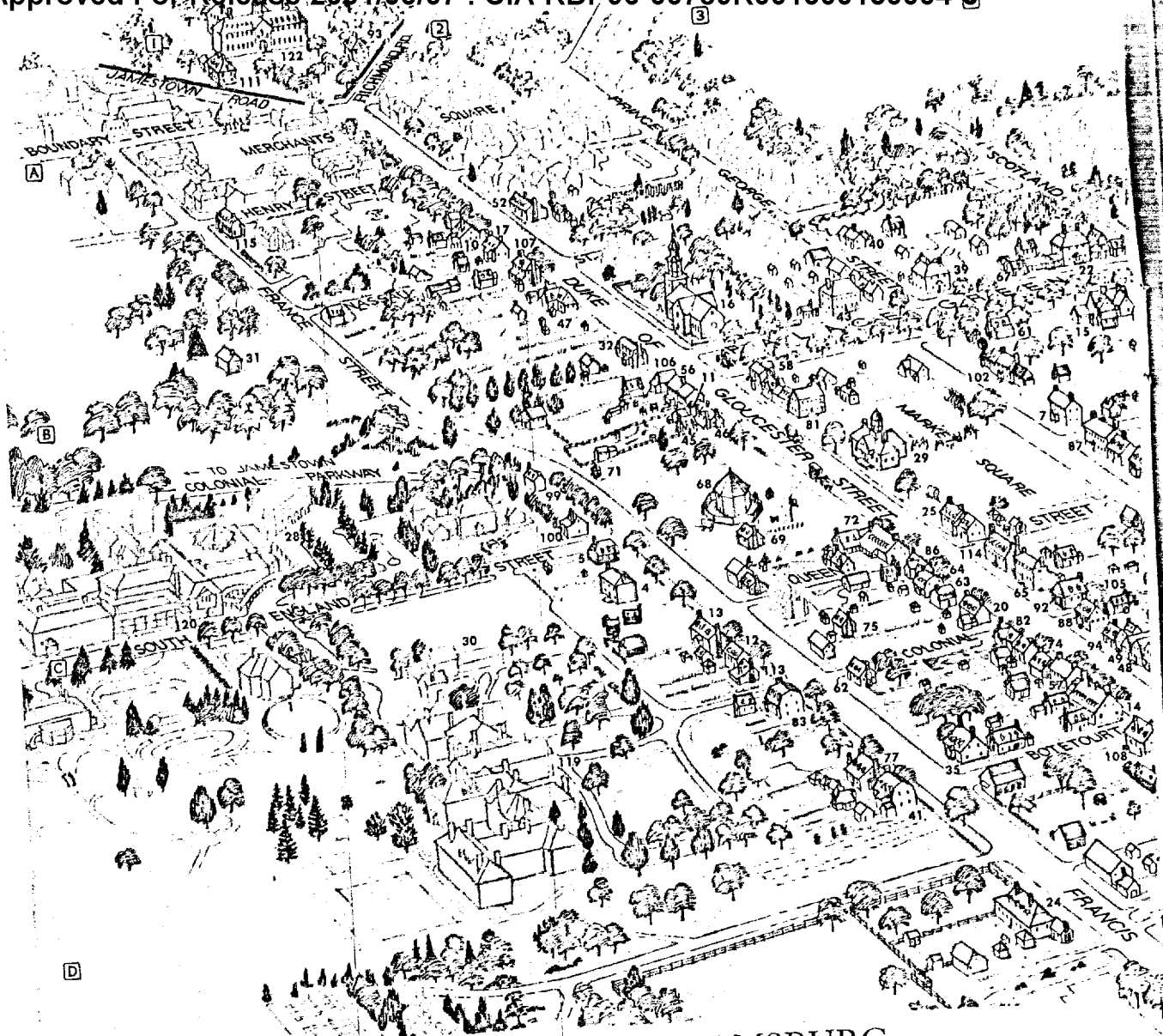
NORTHERN - EAST
NORTH AMERICA

HA HILL ERR

END
1240L



PAINTED BY STAFF ARTIST ROBERT W. NICHOLSON
 COMPILED BY JEAN B. MCCONVILLE
 GEOGRAPHIC ART DIVISION
 © NATIONAL GEOGRAPHIC SOCIETY



COLONIAL WILLIAMSBURG

In this painstakingly restored capital of Virginia, eighteenth-century America lives again for the twentieth century to observe and enjoy. In preparing the painting, the artist has omitted many trees to better show buildings and streets. Only those structures rendered in color are parts of the historic area.

- | | | | |
|--|---|--|--|
| 1. ABBY ALDRICH ROCKEFELLER FOLK ART COLLECTION C1 | 33. DAVID HORTON HOUSE F6 | 61. LEVINGSTON KITCHEN B4 | 93. PRESIDENT'S HOUSE, COLLEGE OF WILLIAM AND MARY A2 |
| 2. ALEXANDER CRAIG HOUSE D5 | 34. DAVIDSON SHOP C5 | 62. LEWIS HOUSE C3 | 94. PRINTING OFFICE, POST OFFICE, AND BINDERY C4 |
| 3. ALEXANDER PURDIE HOUSE D5 | 35. DR. BARRAUD HOUSE C4 | 63. LIGHTFOOT KITCHEN C4 | 95. PUBLIC GAOL D7 |
| 4. ALLEN-BYRD HOUSE C3 | 36. DRAPER HOUSE E7 | 64. LIGHTFOOT HOUSE C4 | 96. PUBLIC RECORDS OFFICE D5 |
| 5. ALLEN-BYRD TENEMENT C2 | 37. ELIZABETH CARLOS HOUSE C5 | 65. LUDWELL-PARADISE HOUSE B5 | 97. RALEIGH TAVERN AND BAKERY B5 |
| 6. ANTHONY HAY'S CABINET MAKING SHOP C5 | 38. ELIZABETH CARLOS HOUSE C5 | 66. LUDWELL TENEMENT B4 | 98. ROBERTSON'S WINDMILL B2 |
| 7. ARCHIBALD BLAIR HOUSE B4 | 39. ELKANAH DEANE HOUSE B4 | 67. MCKENZIE'S APOTHECARY SHOP B4 | 99. ROSCOW COLE LAUNDRY B2 |
| 8. AYSOUGH HOUSE (GUNSMITH) F6 | 40. ELKANAH DEANE SHOP AND FORGE (BLACKSMITH-HARNESSMAKER) A4 | 68. MAGAZINE B3 | 100. ROSCOW COLE OFFICE B2 |
| 9. BENJAMIN DURFEE HOUSE A2 | 41. EWING HOUSE D4 | 69. MAGAZINE GUARDHOUSE C3 | 101. RUSSELL HOUSE C5 |
| 10. BLAKLEY-DURFEE HOUSE A2 | 42. GEORGE JACKSON HOUSE AND STORE F7 | 70. MARGARET HUNTER SHOP (MILLINER) C5 | 102. ST. GEORGE TUCKER HOUSE B4 |
| 11. BOOT AND SHOEMAKER'S SHOP B3 | 43. GEORGE WYTHE HOUSE B4 | 71. MARKET SQUARE PUMP B3 | 103. SCRIVENER HOUSE E5 |
| 12. BRACKEN-CARTER HOUSE C3 | 44. GOVERNOR'S PALACE B5 | 72. MARKET SQUARE TAVERN C3 | 104. SEMPLE HOUSE C4 |
| 13. BRACKEN HOUSE C4 | 45. GREENHAW-REPTON BRICK OFFICE B3 | 73. MARY STITH SHOP D5 | 105. SIGN OF THE RHINOCEROS C4 |
| 14. BRICK HOUSE TAVERN B4 | 46. GREENHAW-REPTON HOUSE B3 | 74. MASONIC KITCHEN C4 | 106. SPINNING AND WEAVING HOUSE B3 |
| 15. BRUSH-EVERARD HOUSE B3 | 47. HARTWELL PERRY'S ORDINARY C4 | 75. MOIR SHOP E6 | 107. TALIAFERRO-COLE HOUSE A7 |
| 16. BRUTON-PARRISH CHURCH B2 | 48. HOLT'S STORE C4 | 76. MOODY HOUSE D5 | 108. TARPHEY'S STORE C4 |
| 17. BRYAN HOUSE A6 | 49. HUNTER'S STORE B8 | 77. NELSON-GALT HOUSE F7 | 109. TAYLOR HOUSE C5 |
| 18. BURDETTE'S ORDINARY D2 | 50. INFORMATION CENTER B8 | 78. NICOLSON HOUSE D5 | 110. THE BLUE BELL A1 |
| 19. CAPITOL E6 | 51. ISHAM GODDIN SHOP F7 | 79. NICOLSON SHOP D5 | 111. THE BRISTOLTON C1 |
| 20. CAPTAIN ORR'S DWELLING E5 | 52. JOHN BLAIR HOUSE A2 | 80. NORTHON-COLE HOUSE B3 | 112. THE GOLDEN BALL (CLOCKMAKER, JEWELER-ENGRAVER) D5 |
| 21. CARTER-MOIR HOUSE E5 | 53. JOHN CARTER'S STORE D5 | 81. ORLANDO JONES HOUSE C4 | 113. THE QUARTER D5 |
| 22. CARTER SAUNDERS HOUSE D4 | 54. JOHN COKE OFFICE D5 | 82. ORRELL HOUSE C3 | 114. THE RED LION A1 |
| 23. CHARLTON HOUSE B5 | 55. JOHN CRUMP OFFICE D5 | 83. PALMER HOUSE D5 | 115. TRAVIS HOUSE D5 |
| 24. CHISWELL-BUCKTROUT HOUSE D4 | 56. JOHN GREENHAW HOUSE AND STORE B3 | 84. PASTER-GALT APOTHECARY SHOP D5 | 116. UNICORN'S HOUSE C3 |
| 25. CHOWNING'S TAVERN B4 | 57. JAMES ANDERSON HOUSE C4 | 85. PETER HART'S SHOP C4 | 117. WATER-COLEMAN HOUSE C5 |
| 26. CHRISTIANA CAMPBELL'S TAVERN E7 | 58. JAMES GEDDY HOUSE AND SHOP (SILVERSMITH) B3 | 86. PEYTON RANDOLPH HOUSE C4 | 118. WETHERBURN'S TAVERN C5 |
| 27. COKE GARRETT HOUSE B1 | 59. KING'S ARMS BARBER SHOP (WIGMAKER) C5 | 87. PITT DIXON HOUSE C4 | 119. WILLIAMSBURG INN C2 |
| 28. CONFERENCE CENTER B1 | 60. KING'S ARMS TAVERN D5 | 88. POWELL'S TENEMENT E7 | 120. WILLIAMSBURG LODGE C5 |
| 29. COURTHOUSE OF 1770 C4 | | 89. POWELL WALKER HOUSE C5 | 121. WILLIAM RANDOLPH LODGING A2 |
| 30. CRAFT HOUSE C2 | | 90. PRENTISS HOUSE C4 | 122. WREN BUILDING A2 |
| 31. CUSTIS KITCHEN B1 | | 91. PRENTISS STORE C4 | |
| 32. CUSTIS-MAUPIN HOUSE B3 | | | |