

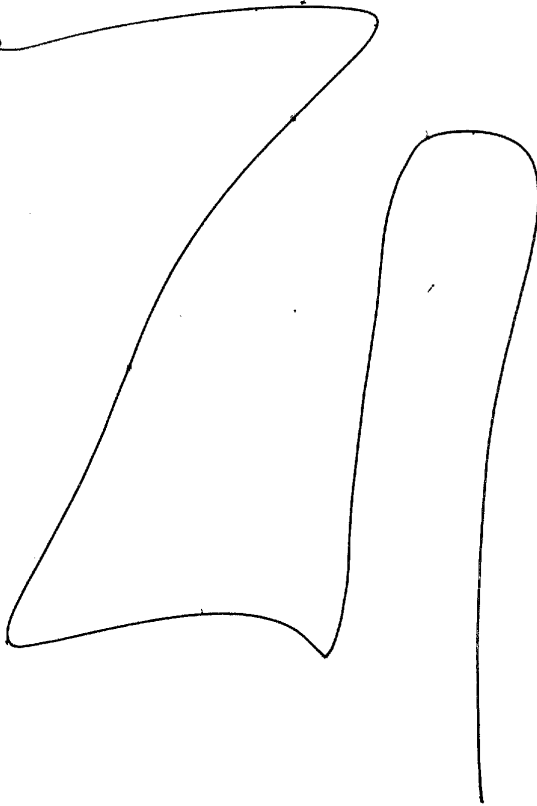
AV - *Cataginal*  
PI - ~~non~~ *Generic*  
*metal hull vessel*

JTF-4  
31 Jul 90  
P: 086  
00F  
0920

900731  
9000

Miss BK  
AOL BK  
Ditto on AV  
Fishing Trawler

900731  
900086



A - across,  
angle down,  
angle forward,  
angle up,  
angle across,  
angle down.

- semi hard  
manmade

B - structure

A - hard  
manmade

B - structure

AOL BK  
metal hull

2)

A - hard  
manipulated

B - structure  
AOL BK

wooden planks  
Dock in harbor  
AOL BK  
wooden pilings

A - soft  
natural

B - water

A -

52

Smooth

tan

blue

green

red

yellow

orange

violet

black

sticky (54)

round

slight chem smell

woody smell

sharp taste

bitter taste

clanking, small

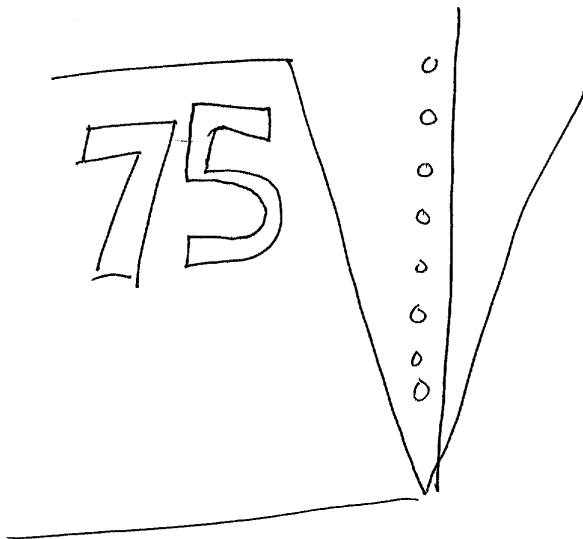
throbbing "

objects banging "

smoothed Coarse  
bumpy

AOL BK  
Rivets  
Previous AOL  
Sketches

blue  
grey  
white  
blechy  
square  
angle  
diagonal  
in,  
full



break  
0933

Slit 0942

MISS BK

900731  
90005

900731  
900086



A. across  
 angles down,  
 angles forward,  
 curve down,  
 angle forward  
 angle up

- semi hand  
 - manipulated

B- structure  
 Arc BK  
 Wooden  
 planks

Arc BK  
 Sling trawler  
 Net Boom

A- hand  
 made

B- structure

- Mammals

B - structure

AOE BK

Net or sail

AOE BK

wooden pilings

AI BK

Feels like the  
plunging into a  
deep, dark cold  
sea.

SZ

green

blue

white

dirty white

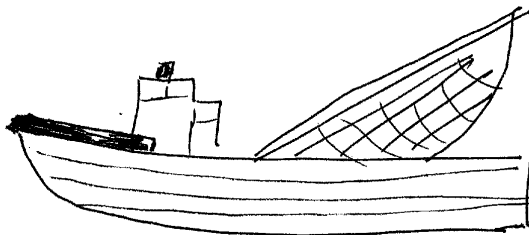
gray

depressing (SZ)

slow

lumpening (SZ)

AOE sketch



6)

52

D

AI

EI

T

I

AOL

A/S

red  
green  
dirty  
smelly

chugging  
burping

Barely working/  
operating

smoking

Depressing  
Depression associated  
somehow with the  
vessel.

A/S  
Shrimp  
Trawler

Black  
brown

silty

AOL BK  
overhead  
photo

52

D

AI

EI

T

I

Aug A/S

5 1/2 Old shrimp or fishing trawler associated with a dock or pier.



SG1A

yellow  
white  
light green

row 2

tires (as  
bumpers?)

A/S  
Tires  
hanging  
from sides

V-shaped

Beans  
Bread rolls  
Flour

Brush  
1001

52

D

AI

EI

T

I

Ac

A/S

SG1A

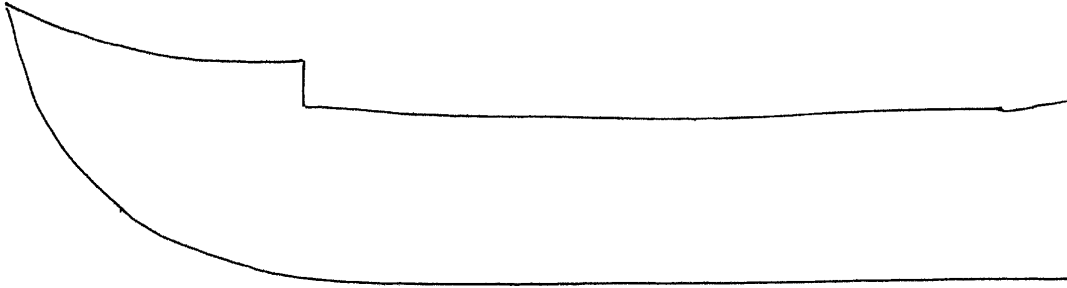


[What is it?]

grey  
brown  
blue  
yellow

puffy

rainbow





9)  
D AI EI T I Av A/S

[Type of Operation]

56 1/2 Transfer at sea between  
metal hull'd freight type  
vessel & a shrimp fish  
trawler.

Brink  
1050  
-----  
1120

52 D AI EI T I A/C A/S

900731 900086

56 1/2 Light hulled, white SS. SS  
sets w/c near 1/3. Large  
sings most near bow.  
Clutter of different shaped  
objects mid deck. Large  
freight. Something to do w/ Honduras.

Shrimp / fish & crawler: see  
earlier notes.

Between 0001 & 0600 1 Aug 80

21° 08' N 71° 47' W

52 D AI EI T I No AFS

56 1/2 Transfer will occur within  
an isolated cove or small harbor  
in extremely calm seas.

~~There is some~~ Attention the  
specific cove/harbor is characterized  
by something wooden & abundant  
an old dock or wharf, a ship  
wrecked wooden vessel or an  
abandoned shack or structure.  
There are deteriorating wooden  
objects extending from the  
shore.

"Shunpe" has come from ~~1222~~

Version of Great Inagua  
Bahamian relationship: either  
found out of or ... name as Comment  
of Hudson

EI  
1222