

SG1A

Approved For Release 2000/08/08 : CIA-RDP96-00789R001100210002-5

Approved For Release 2000/08/08 : CIA-RDP96-00789R001100210002-5

18 JUL 90
1445
KEY WEST
~~OFF~~

P.I. NONE
A.V. NONE

AREA "S,"

900718
900067

~~AI~~ ~~OFF~~ ONK.
SURPRISE AT 1000GAM.

900718
900067

K: ACROSS
RISING
KEY WEST
KIA MIA
B: STRUCTURE.

52!

BUT
CROSSING BRIDGE
DARK KNOY.
MISTAKE
TALL
EMPTY

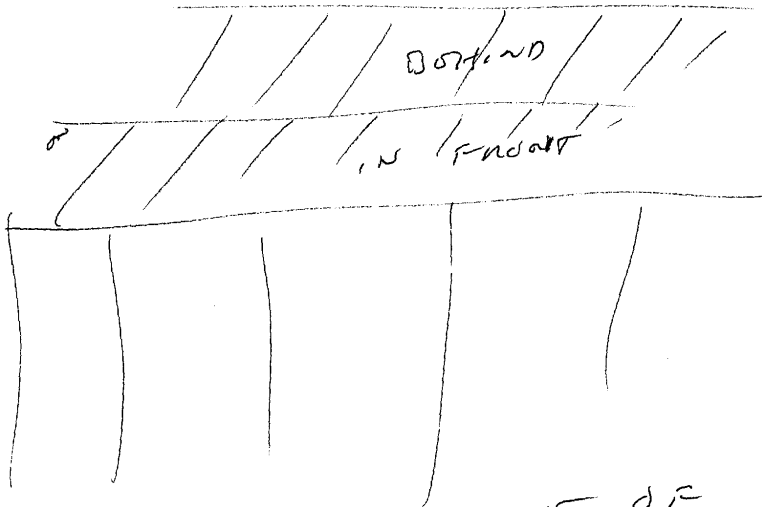
ALL ONK.
EMPTY = MOSTLY OPEN SPACES
NOT TOTALLY EMPTY!

ALL ONK
WAREHOUSE.

ALL ONK.
VISUAL: KNOY
MULTISTORIED
OFFICE BLDG.

2

S2: ROP
BLASTING
METALLIC
CAME
STOPPED UP



3

STRUCTURE

~~AREA~~ FLAT

WATER

NOTE FOR K

WAREHOUSE ON DOCK

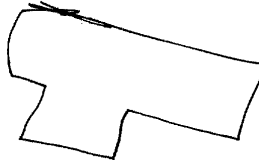
KR BRK
WOODEN DOCK.

S6: SEE PHOTO, P. 4A

S2 D RI OT T I AOL A/S.
(AREA OF ANCH)

see page 4A

① A: BRK
00000!



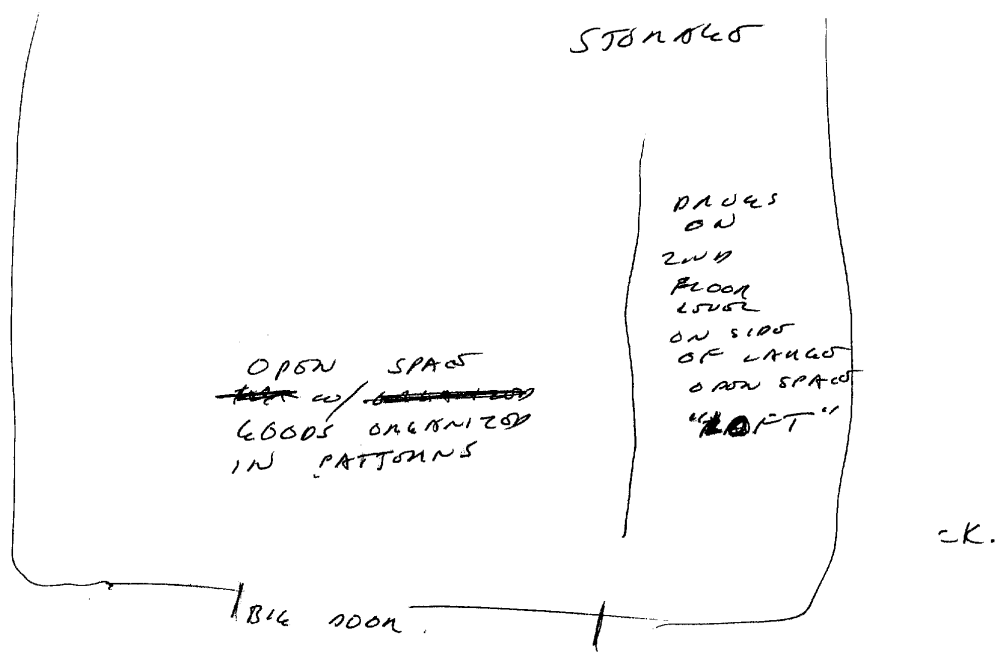
(DRAWING OF BED IN
MIDDLE OF AREA "S")

DIRECTIONAL
CONTROL &
SETUP
DIRECTOR OF ACTIVITIES
ORGANIZATION

4

52 0 81 7 5 , or 1/5.

See page 4A
2



~~as stated~~
ONLY MARKI JUNK

ADL TRK
SEEN FROM END
OF BLDG.

See page 4A
3

56 1/2 SMALL BOAT (1-2 PERSON) ~~PUTS~~ PUTS IN
HOLD ABILITY TO STEAL ~~GOODS~~ ~~GOODS~~
~~GOODS~~ FROM THE WAREHOUSE, AT
NIGHT.

5

56: 508 PHOTO, P. 4A

52 D 81 87 T 1 AD 4/5

See page 4A

56 1/2 LOADING/UNLOADING FACILITY.
THIS IS A SPECIAL TEMPORARY
~~SPECIAL~~ HOLDING PLACE UNDERNEATH
THIS FACILITY FOR LOADING
CONTRABAND GOODS. (IMPRESSION OF A
ROOM-TYPE LOCATION ^{HIDDEN} AMID THE
PILINGS.

IMPRESSION THAT THE ONLY SHIPS
WHICH CAN LOAD ^{LARGE QUANTITIES} CONTRABAND AT
THIS LOCATION ARE THOSE WHICH
PAK RIGHT NEXT TO THIS FACILITY.
THOSE ARE THE SHIPS ~~TO~~ SUSPECT
WHEN THEY LOAVE. THOSE WHICH DO
NOT DOCK NEXT TO THE FACILITY
WILL NOT HAVE PICKED UP A
LARGE QUANTITY OF CONTRABAND
WHILE HERE.

6

HOW MANY STOPS AND ^{PASSENGERS} IN PORT?

8

A

B

C - DRUGS

FROM SOMEWHERE ELSE, (OF NO CONCERN TO THE PEOPLE HERE)
(MAY HAVE HOME PORT OF ARUBA)

D

E - DRUGS

("SOLAR") NOW BEING LOADED

F - DRUGS

NOT AT DOCK ("LINCON")
FREEDOM. BLACK HULL

G
H

~~MOVING~~ MOVING FROM ONE DOCK
POSITION TO ANOTHER, BUT
PRESENTLY IN A HOLDING
PATTERN AWAY FROM DOCK
NOT YET LOADED.

S7: "SOLAR (FLAME?)"
"SOLAR (DRY?)"
"SOLAR"

(5)

S7: "LINCON"

SESSION END 1543

AREA "S" (SEE SB MATRIX, P. 6)

