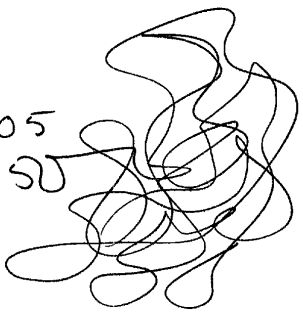


*PT - activities at
descriptions (number of JTF)*

AV - vessel

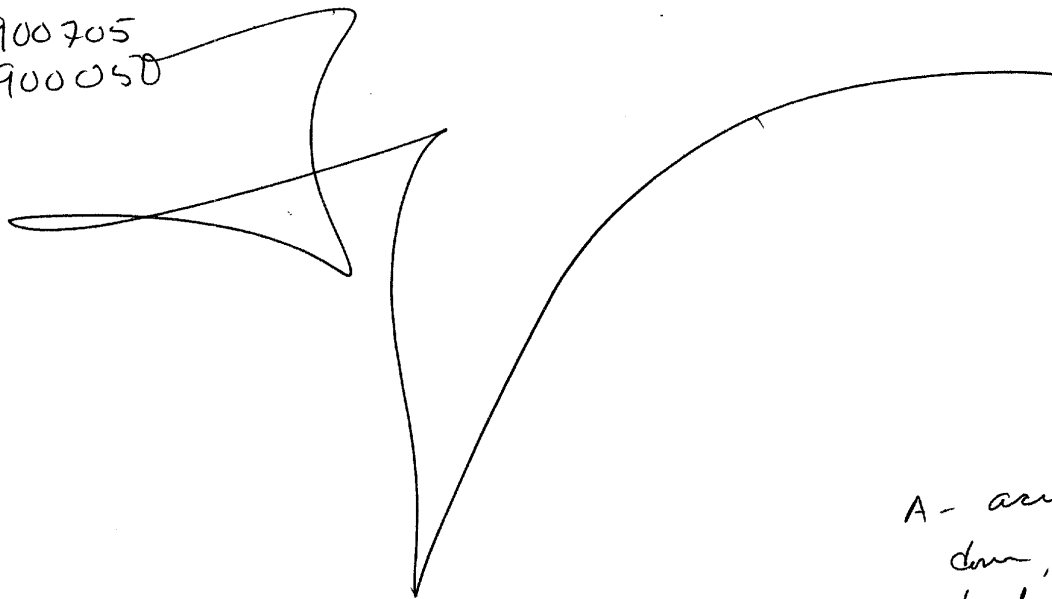
F
5 Jul 90
JTF-4
0050
[Signature]
1320

900705
900050



Miss BK
Confusion BK
Brain dump BK

900705
900050



A - across, a ge
down, a ge
back, a ge
forward, a ge
down, a ge
up, curve
forward

- hard
- mammals

B - structure
As BK

Steel panel

A - hollow

B - air

A - natural
way
- natural

B - water

AI BK
Makes my eyes hurt.

3)

52
Khaki tan
White
ribbed (su)
draglines

A - soft
- mammals
B - structure

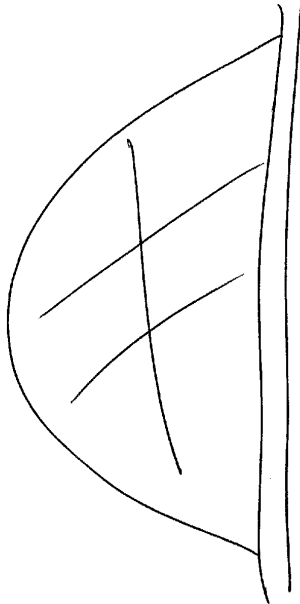
ACL BK
Sails

Curves
puffy
bellman (su)

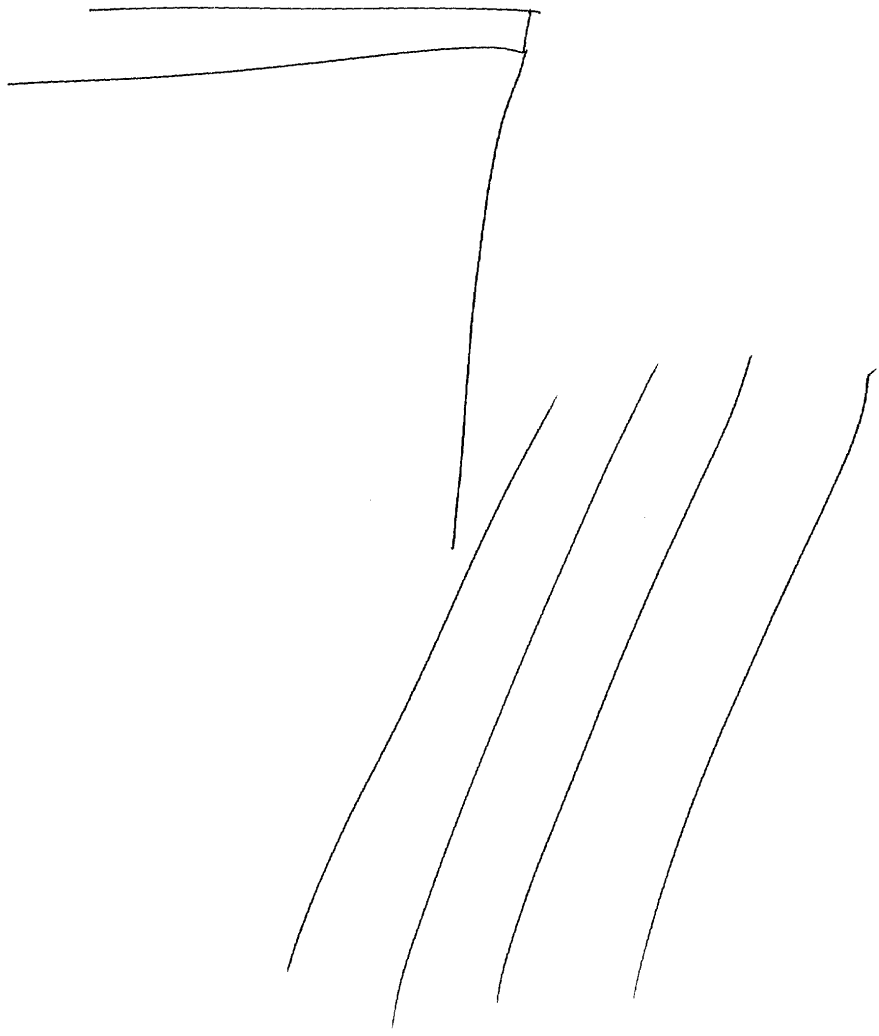
ACL BK
Sails again

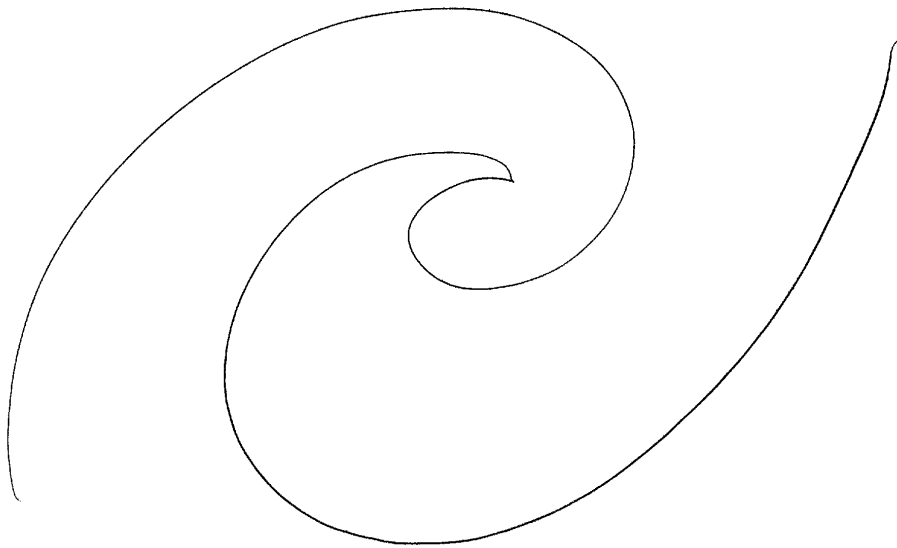
angles
sharp angles
stale wood smell
bitter sweet taste
woody feelings (su)

ACL BK
Wooden sail
boat



(S)





52 D AI EI T I AOC AOC/S

Crimson
red
green
yellow stripes

small

AOC/S
Sailboat

wooden

black rubber
poles

round
flat
parallel lines

Varnished

shiny

Clean
rough ocean

AOC Sketch



52

D

AT

ET

T

I

AOL

AOL/S

[Narcotics on board?]

yes

[cocaine?]

[Pot?]

[Pills?]

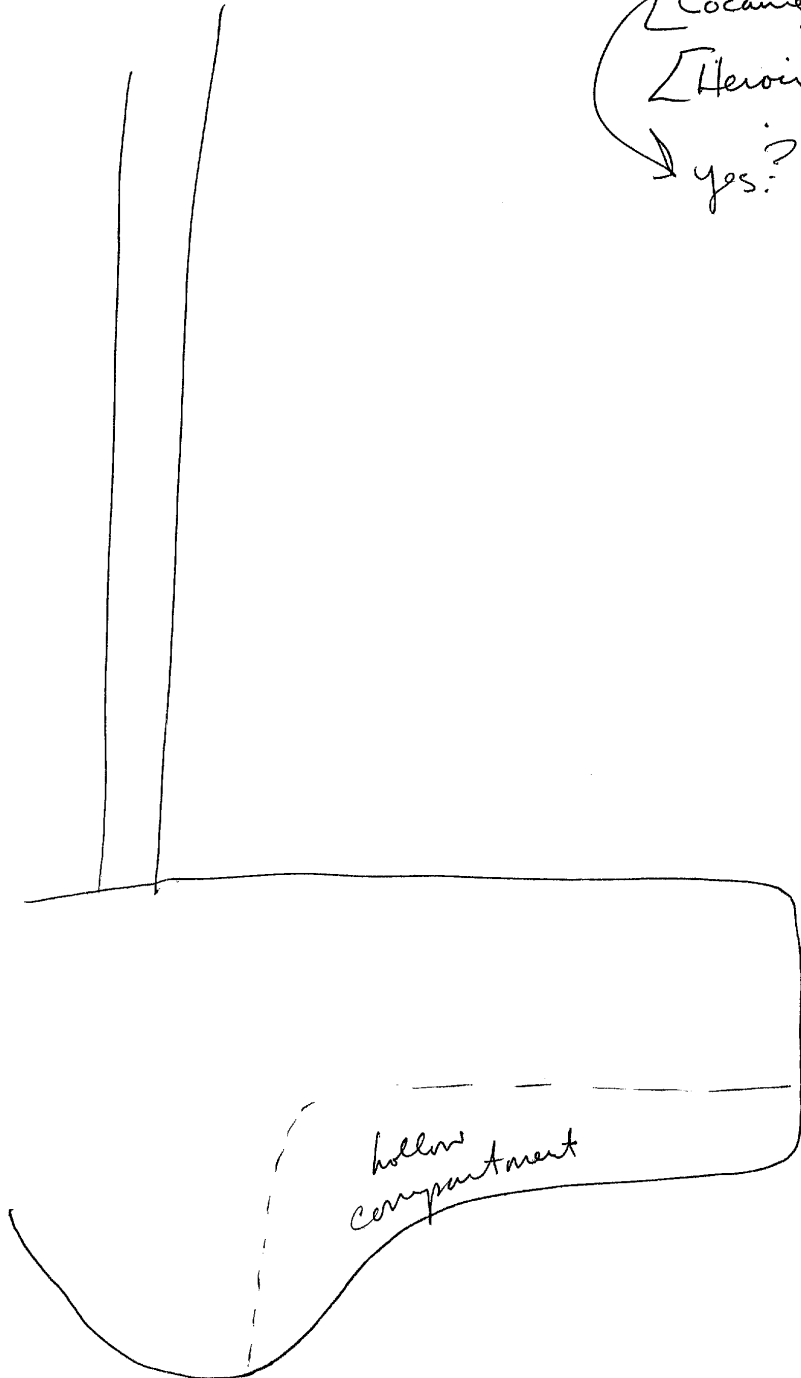
[Cocaine?]

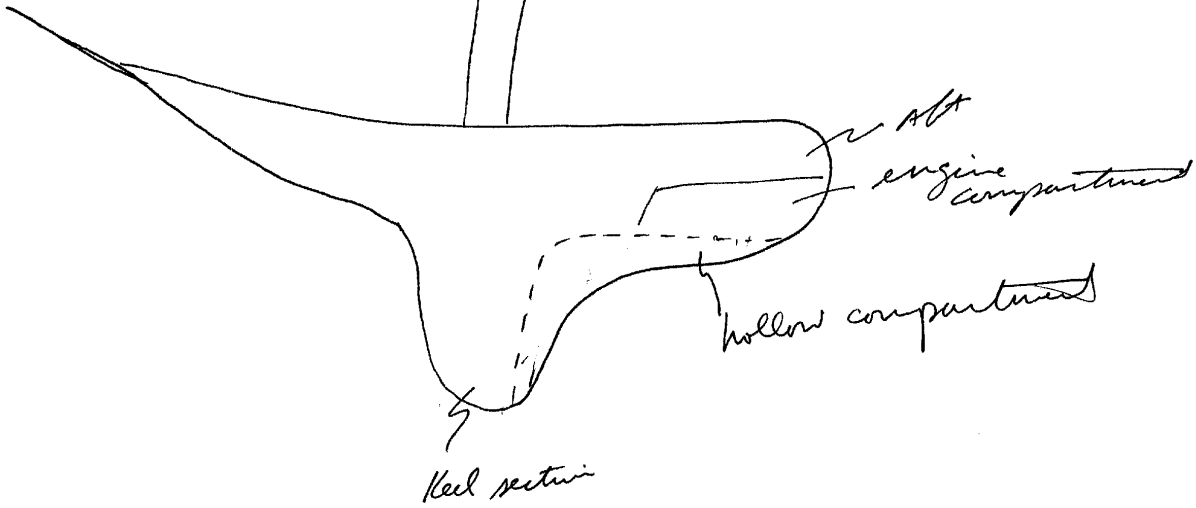
[Heroin?]

yes?

AOL BK
Softball sized
lumps of coke

Round balls
of coke stashed
w/i Mast of
ship.





52

D

AI

EL

T I

AO- A04/S

[Type, size, characteristics]

dense
hard packed
rectangular

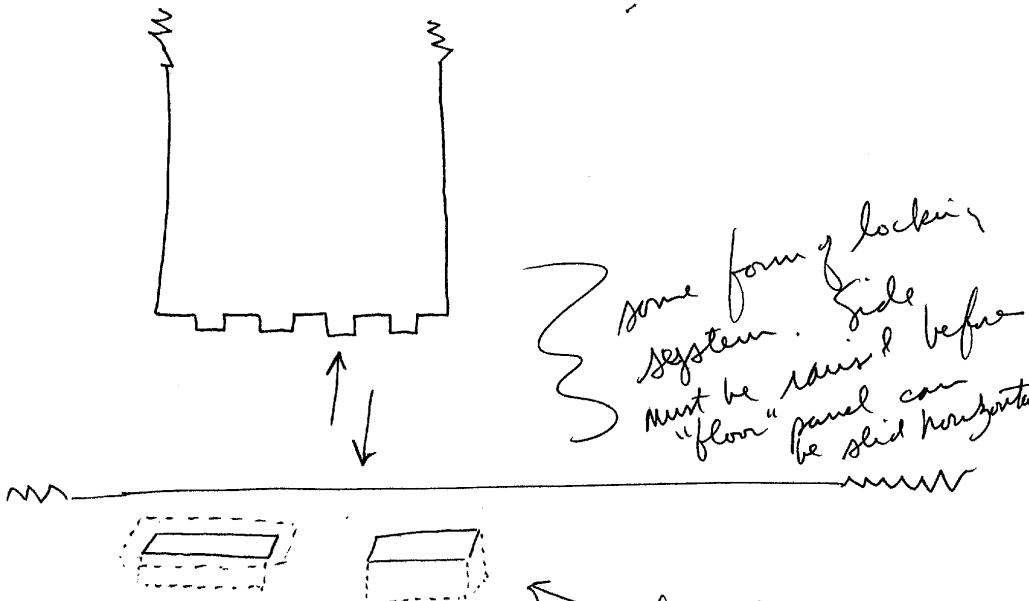
tape

light red
light blue

54 1/2 There is a sliding panel or door
which gains access to the compartment.
Blends in well. Extremely hard
to tell; slides horizontally over keel.
Seamline

54 1/2 quite a process to access
compartment. Necessary to remove
or move something else.

Walls
Weld panels



close up

Brink
1353

Start 1440

10)

Avc Avc/s

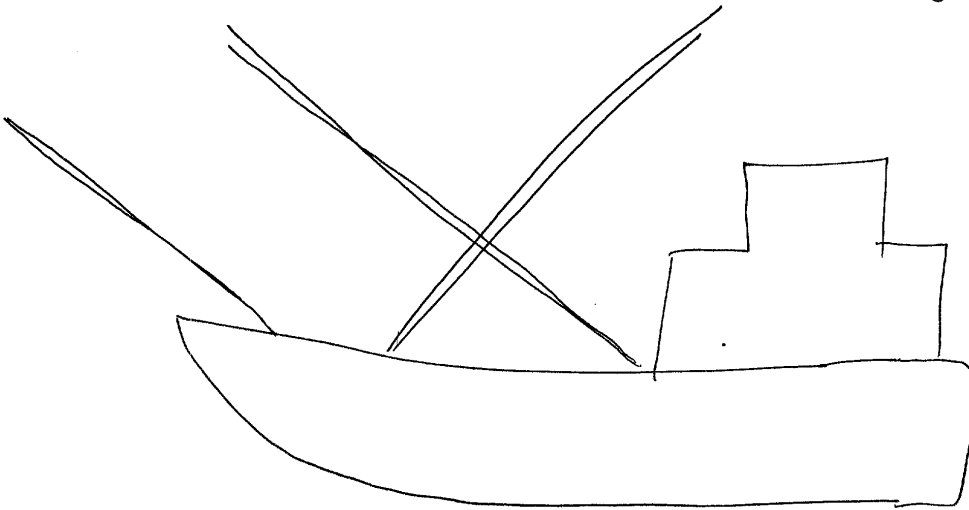
[Other vessels?]

Yes

metal hulled

fishing

Avc/s
fishing boat



Avc/s
Trawler

[name]

CHARLES III

CHARCAS III

CHARLOTTE III

hauling
mining

baskets
nets

fat man

52

D AI EI T I AUC AUC/S

smokes cigars

AE BK transfere
Makes me sea sick

night time

red
tegit

cons

blue

AUC BK
Blue coffee
com

17th July

1446