
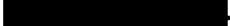


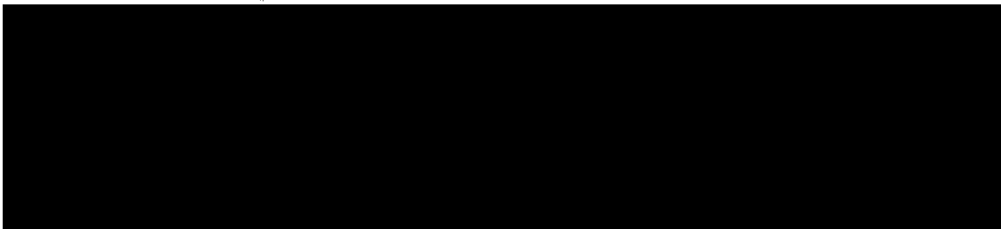
~~SECRET~~ NOFORN STIPPLED SG1A  
SPECIAL ACCESS REQUIRED

PROJECT SUMMARY: PROJECT # 9055

SG1H OPERATION: 

TASK: (5 JUL 90) Locate the vessel   
Determine if illegal drugs are on board and if so,  
describe packaging and location on board.  
Determine destination of illegal drugs.

REPLY: Three locations provided. Reported a secret  
storage compartment (diagram provided) and a  
surface transfer will occur on 17 Jul at 2641N  
8440W, with a vessel named CHARLES III/CHARCAS  
III/CHARLOTTE III. No contraband on board.

ACTION: 

SG1A

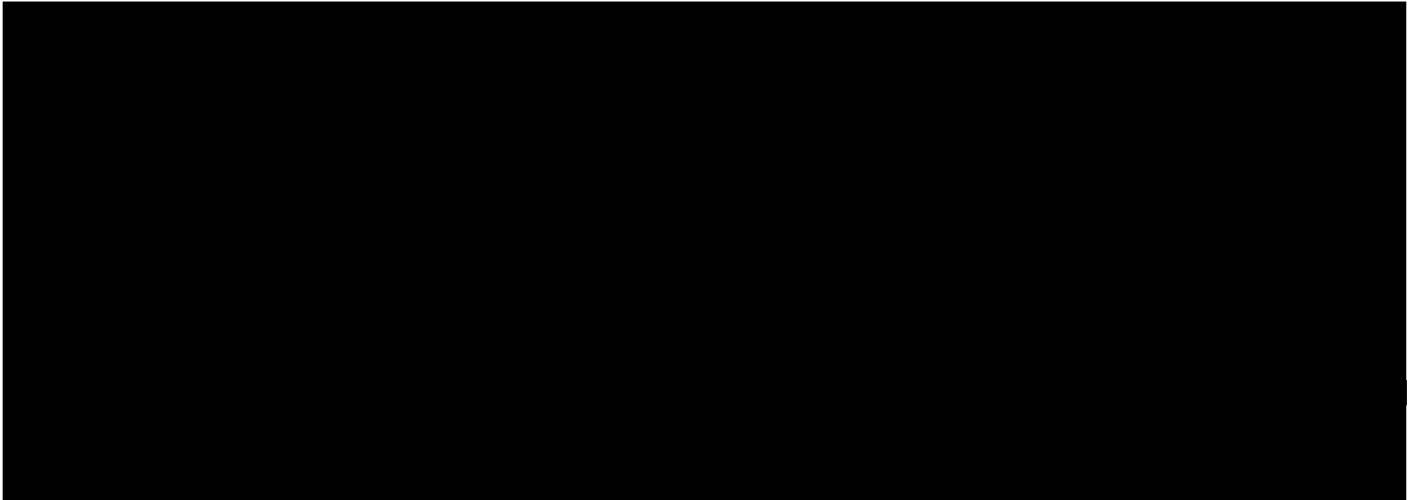
EVAL: Some correlation based on report that vessel was  
not carrying contraband.

~~SECRET~~ NOFORN STIPPLED  
SPECIAL ACCESS REQUIRED  
Handle Via SKEET Channels Only

9055

JT4-0050-90

SG1A



A

EEI:

1. WHAT IS CURRENT LOCATION OF TARGET VESSEL?
2. IS VESSEL CARRYING NARCOTICS? DESCRIBE TYPE AND LOCATION.
3. WHAT IS PLACE/TIME OF SCHEDULED OFFLOAD?
4. IF SURFACE TRANSFER IS TO TAKE PLACE: WHERE, WHEN, ASSOC VESSELS



Feedback on JT4-050 05 July 90

SG1A□

OOC: 051000L Jul 90

The [REDACTED] is located at 23N 89W. It does not have contraband on board. A surface transfer is scheduled 30 miles north, but it is unlikely that contraband will be unloaded. It will continue on its current course.

OOE: 051100L Jul 90

The vessel is located at 2250N 8225W and is not carrying contraband .

OOF: 0050-90 90 051445 JUL

The target is a sailing vessel with one or two boom-like objects (masts?). It has a light colored hull and there is a sense of "newness" associated with it.

EEl#1: 20 03 N 85 19 W.

EEl#2: The vessel is carrying small, rectangularly-shaped objects which contain a densely packed substance. These hard-packed "packages" are themselves densely packed within a hollow area located within the rear portion of the keel section and under the engine compartment (see diagram pages 7 & 8). The colors light blue and/or light red are associated with these packages. There is a sliding panel or door which gains access to this hollow compartment. The panel blends in well with the seamline of the sides/walls and it is extremely hard to ascertain that the horizontal panel can be moved at all. It slides over the keel to allow access to the compartment. There is a locking mechanism; the process is quite elaborate in order to access the area. It is necessary to remove or move one or more other pieces in order to slide the horizontal panel.

EEl#3 & #4: There is a second vessel involved with the target ship. It is reminiscent of a fishing or shrimp trawler. It has a small super structure well aft and has two or more booms extending at a diagonal from the deck area. The names associated with this second vessel are: CHARLES III, CHARCAS III or CHARLOTTE III. The surface transfer will occur the 17th of July during darkness. The location is 26 41 N 84 40 W. The second vessel will be involved with hauling and/or moving something in baskets or nets. The man in charge of the operation of the second vessel is fat, very dirty and smokes cigars. Objects reminiscent of blue coffee cans are significant after this transfer.

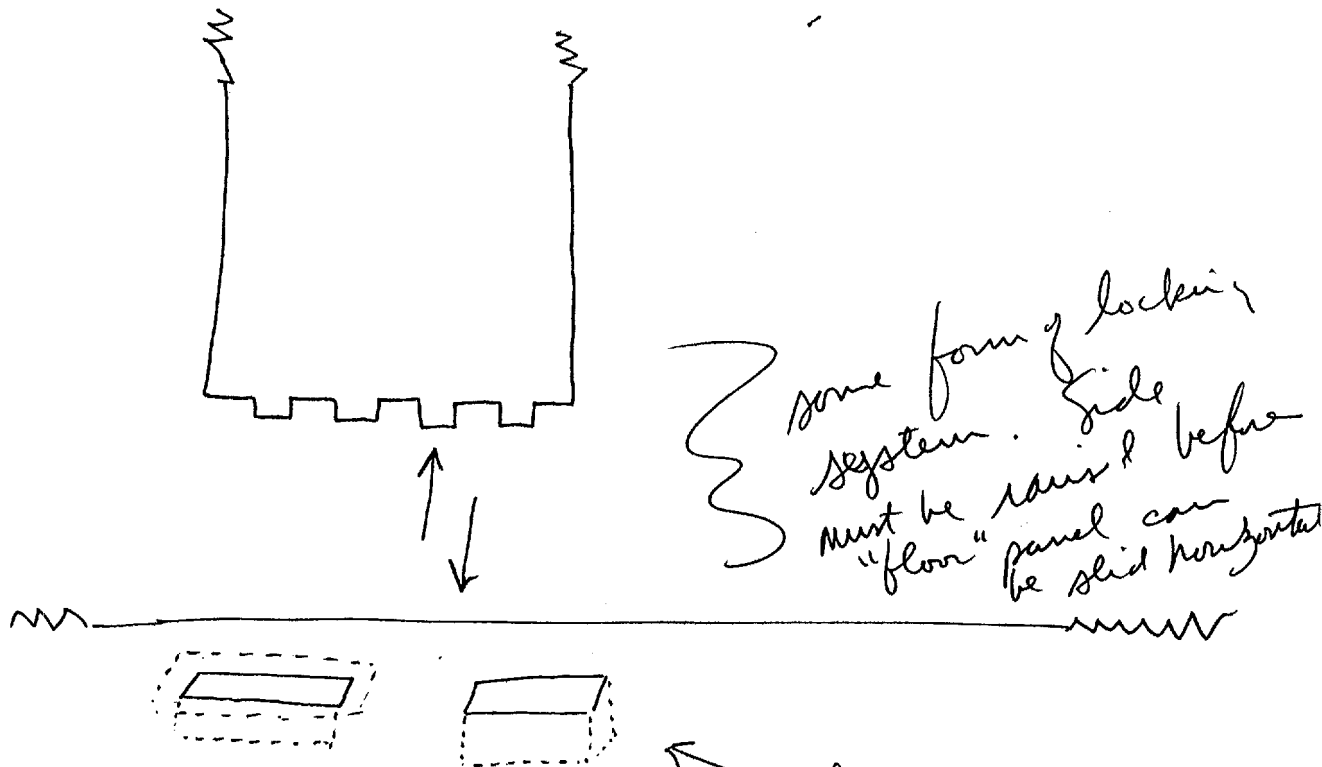
light red  
2  
light blue

1 yr

54 1/2 There is a sliding panel or door which gains access to the compartment. Blends in well. Extremely hard to tell; slides horizontally over keel. Seam line

54 1/2 quite a process to access compartment. Necessary to remove or move something else.

walls  
weld panels



Brent  
1353



Feedback on JT4-050 05 July 90

OOC: 051100L Jul 90

~~SECRET~~ [REDACTED] is located at 23N 89W. It does not have contraband on board. A surface transfer is scheduled 30 miles north, but it is unlikely that contraband will be unloaded. It will continue on its current course.

OOE: 051100L Jul 90

The vessel is located at 2250N 8225W and is not carrying contraband .

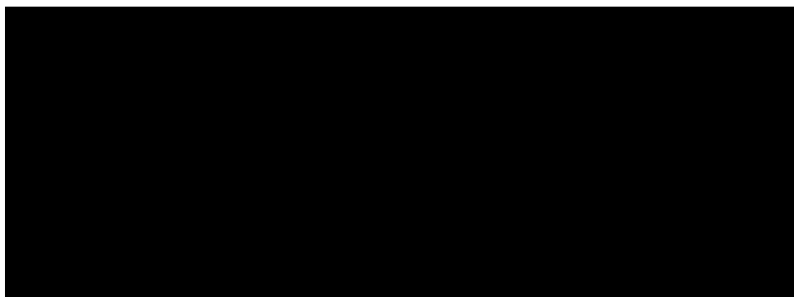
OOF: 0050-90 90 051445 JUL

The target is a sailing vessel with one or two boom-like objects (masts?). It has a light colored hull and there is a sense of "newness" associated with it.

EEl#1: 20 03 N 85 19 W.

EEl#2: The vessel is carrying small, rectangularly-shaped objects which contain a densely packed substance. These hard-packed "packages" are themselves densely packed within a hollow area located within the rear portion of the keel section and under the engine compartment (see diagram pages 7 & 8). The colors light blue and/or light red are associated with these packages. There is a sliding panel or door which gains access to this hollow compartment. The panel blends in well with the seamline of the sides/walls and it is extremely hard to ascertain that the horizontal panel can be moved at all. It slides over the keel to allow access to the compartment. There is a locking mechanism; the process is quite elaborate in order to access the area. It is necessary to remove or move one or more other pieces in order to slide the horizontal panel.

EEl#3 & #4: There is a second vessel involved with the target ship. It is reminiscent of a fishing or shrimp trawler. It has a small super structure well aft and has two or more booms extending at a diagonal from the deck area. The names associated with this second vessel are: CHARLES III, CHARCAS III or CHARLOTTE III. The surface transfer will occur the 17th of July during darkness. The location is 26 41 N 84 40 W. The second vessel will be involved with hauling and/or moving something in baskets or nets. The man in charge of the operation of the second vessel is fat, very dirty and smokes ~~SECRET~~ Objects reminiscent of blue coffee cans are significant after this transfer.



light red  
2  
light blue

54 1/2 There is a sliding panel a door  
which gains access to the compartment.  
Blends in well. Extremely hard  
to tell ; slides horizontally over keel.  
Seamline

54 1/2 quite a process to access  
compartment. Necessary to remove  
or move something else.

walls  
wall panels

