

*copy*

~~SECRET~~

WORKING PAPER

Project: 9003-2  
Date: 90209  
Time: 1409-1458  
Viewer: 018  
Session: 02

SUMMARY OF INFORMATION:

1. (S/STD) Describe the target vessel: (See sketch, Fig. 1) The vessel is very large, with a top portion which is short in relation to the height of the vessel. I was very surprised at the long length of the vessel. Overall, the vessel is grey, but has a dark maroon-red "stripe" along its side. The paint is not new. The dark red/maroon "stripe" appears to have several chips out of the paint.

2. (S/STD) Describe the nature of the contraband in the form of illegal drugs: The drugs are in the form of a moist, "packable" powder which is a dark honey-brown in color. In fact, it has much the same appearance and consistency as light brown sugar.

3. (S/STD) Describe how the drugs are packaged: The drugs are in two locations aboard the ship (see item 4., below). The smaller amount is in several portions, each wrapped in light brown paper and placed into a clear plastic bag with a "press-to-seal" top (like a large sandwich bag). These portions are kept in what appears to be a briefcase.

The larger amount is sealed into a doubly-curved encasement (Fig. 2) which conforms in shape to the curve of the ship's hull. This encasement is made of black "slats" or stiffened strips of tarred tape.

4. (S/STD) Describe where the drugs are located aboard the ship: (see

~~SECRET~~

~~SECRET~~

Figs. 3, 4, & 5). The drugs are in two locations aboard the ship:

a. A small amount is located near the top of the ship, in what appears to be right below the "cabins" or whatever structures rise above deck level. This amount is not used by the people on the ship, but has the feeling of being a "display sample". The exact location is very confusing to me in that I find it inside a room with a wooden door.

b. A larger amount is located forward of midships, slightly lower than the mid-height of the ship, and very close to the right side of the ship (looking at it from the front). There is quite a lot of it in this location.

~~SECRET~~

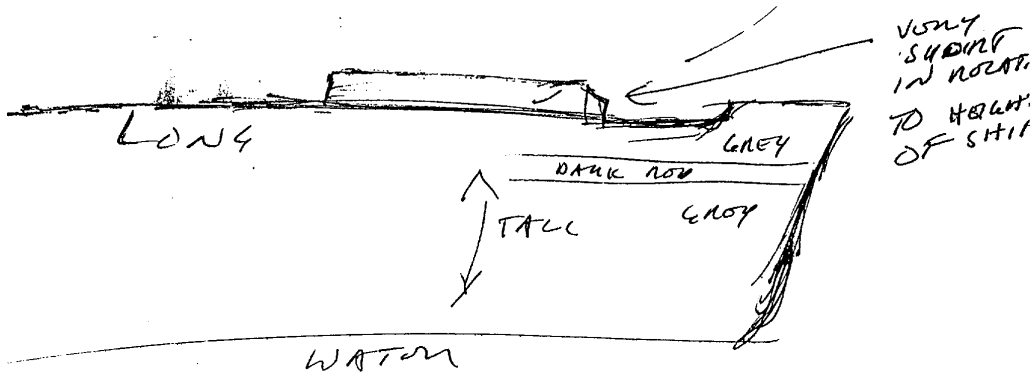
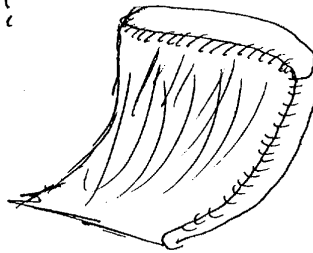


FIG. 1

DOUBLE CURVED  
SKI



BLACK

SLATS.

FIG. 2.

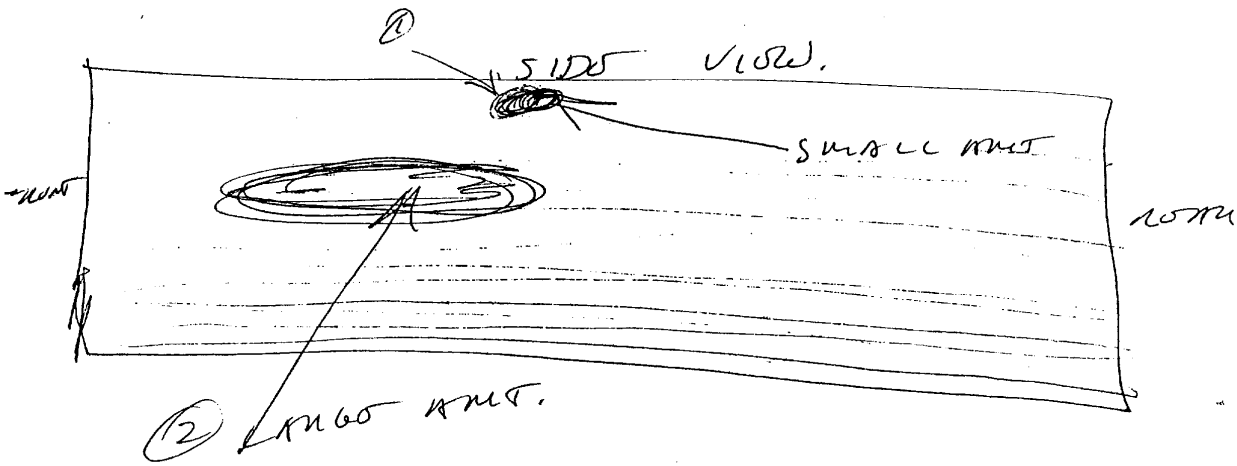


FIG. 3.

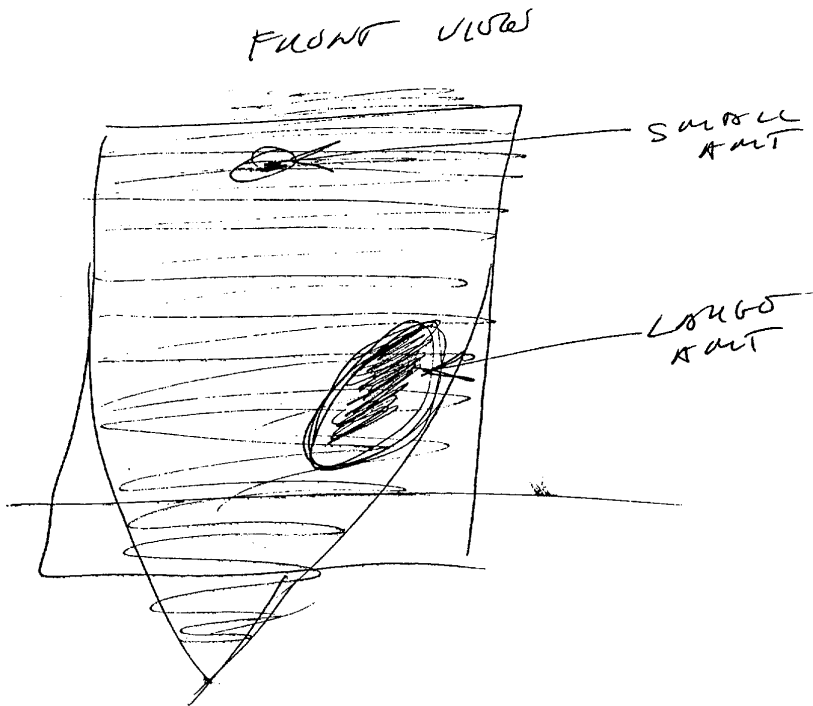


FIG. 4

TOP VIEW

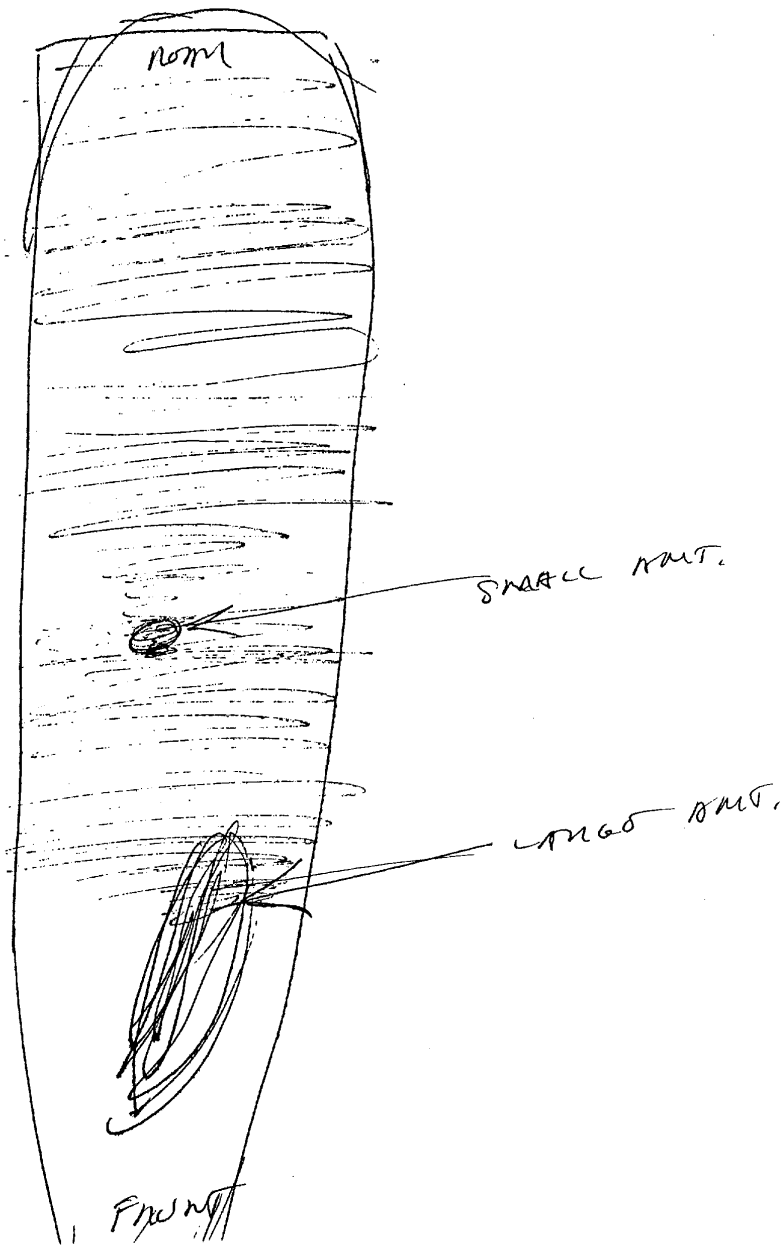


FIG. 5