

~~SECRET~~/NOFORN

PROJECT SUN STREAK

WARNING NOTICE: INTELLIGENCE SOURCES AND METHODS INVOLVED

PROJECT NUMBER: 8928 SESSION NUMBER: 02
DATE OF SESSION: 26 SEP 89 DATE OF REPORT: 26 SEP 89
START: 0912 END: 1003
METHODOLOGY: SOLO VIEWER IDENTIFIER: 018

1. (S/NF/SK) MISSION: Determine and describe the key activity at a geographical location represented by Encrypted Coordinates 362104/453869. Describe personnel, material and equipment related to the target.

2. (S/NF/SK) VIEWER TASKING: Refine data reported in Session 01. Concentrate and further describe the concept of "concealed weapons." Provide sketches in support of your findings.

3. (S/NF/SK) COMMENTS: No inclemencies noted. A Summary of Information is attached to this report.

4. (S/NF/SK): EVALUATION:

HANDLE VIA SKEET CHANNELS ONLY

~~SECRET~~/NOFORN

CLASSIFIED BY: DIA (DT)
DECLASSIFY: OADR

~~SECRET~~

WORKING PAPER

Project: 8928
Date: 890926
Time: 0912-1003
Viewer: 018
Session: 02

SUMMARY OF INFORMATION:

1. (S/NF/SK) Describe the concealed weapon(s): The cache of concealed weapons consist of several closely-packed stacks of flats, each holding several cylindrical objects (see top sketch, page 2). These objects are approximately 2 feet in length (seen as slightly longer than a man's forearm in the bottom sketch on page 2), and consist of an outer "tube", with an inner "missile". The missile is slightly shorter than a man's forearm. It has two sets of fins, one set near the front, and another set near the rear. These fins are spring-loaded, and are small. About 1/3 of the distance back from the front of the missile is a joint where the two parts of the missile are put together. The missiles are greyish-green in color.

2. (S/NF/SK) Describe the location of the weapon(s): The cache of weapons is located behind a double wall of metal (see top sketch, page 2). I could find no entrance or exit to the area in which the weapons were located. Facing away from the wall, one sees a "corridor" which is irregular in shape with cream-colored vertical portions which appear as puffed-out "doors" or panels (see sketch, page 4). I tried to get an overall view of the area, but found myself stuck in this "corridor" area.

above ground? underground

3. (S/NF/SK) How are the weapons readied for use?: The weapons are readied for use by a person pulling and pushing levers on the side of the "tube".

4. (S/NF/SK) How are the weapons used?: The weapons are used by placing

HANDLE VIA SKEET CHANNELS ONLY

~~SECRET~~

~~SECRET~~

the rear end of the tube on the shoulder and sighting along it. I found one instance when the person using it was aiming upward at an angle of about 15 degrees from the horizontal.

5. (S/NF/SK) Against what are the weapons used?: Against personnel, in at least one instance. I moved to a time when the weapons were used, only to find several of them being used on a group of newly arriving personnel, who were not at all prepared for fighting. These new personnel were coming through heavy vegetation, and were almost to their goal when they were attacked by the people carrying these weapons. I skipped past the ambush to a time afterwards when several people were standing around looking at the bodies. They were clustered around one body in particular: that of a very tall (well over 6'), well-built (muscular and athletic), completely grey-headed man in a very light greyish-olive drab uniform. This man impressed me as being too old to be so physically fit. He was not one of the troops, but had only accompanied them in order to be a visitor/observer. In life, he had been a very important man.

HANDLE VIA SKEET CHANNELS ONLY

~~SECRET~~

018
26 SEP 88
0912 HRS
FR. MEADS
SOLO

P.I. NO HEAT IN ROOM
A.V. NONE.

8928

SL D M ~~W~~ T I ACZ n/s.
(CONCENTRATED
LUTATIONS)

LONG
B14
CIRCULAR
CYLINDRICAL
FINISHED
SCHEDULED
PACKED IN TIGHTLY TOGETHER
IN ROWS

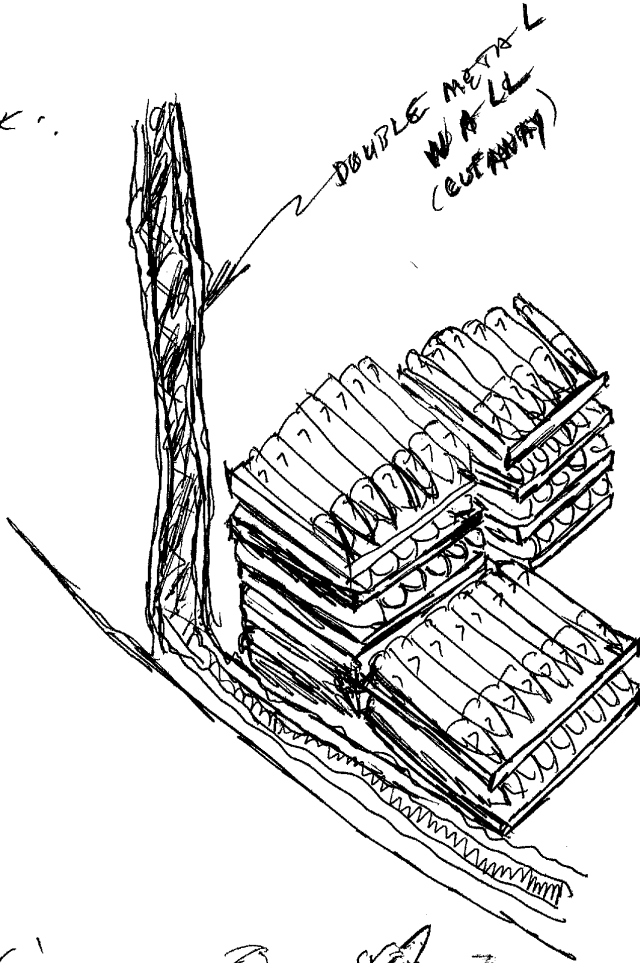
OFF-ROUN
W004-6100W

~~ON~~ ON FLATS
IN STACKS

SID BY SID STACKS.

8928 (2)
890926
S:02
V:018

SK!

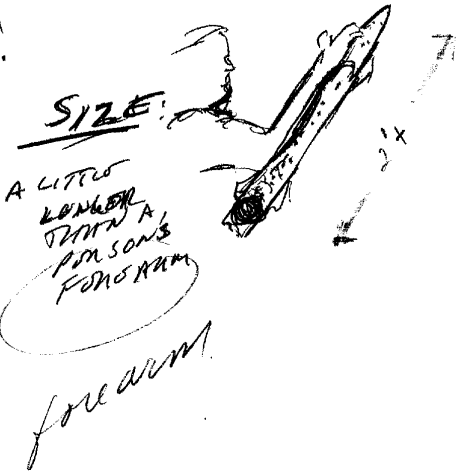


DOUBLE METAL WALL
(CUT AWAY)

PACKED
CLOSELY
TOGETHER

LOTS MORE
STACKS
IN THIS
ROOM

SK!



SIZE:

A LITTLE
LONGER
THAN A
PENCIL'S
PENCIL ERASER

fore arm!

3

S2 D M M T, All rls,
(weapons).

~~S4/2~~

CONF. BULK!

THE "FINS" FEEL LIKE THEY
ARE SOMEHOW "SPRINGY" - WILL
PUSH IN AND POP OUT.

S4 1/2 "FINS" ARE VERY SMALL

S2 D M M T, All rls.
(FINS)

SMALL

"SPRINGY" FEELING

"SNAP" SOUND (WHEN PLAYING WITH THE FINS)

4

S2 0 02 02 5 1 000 000
(LOCATION)

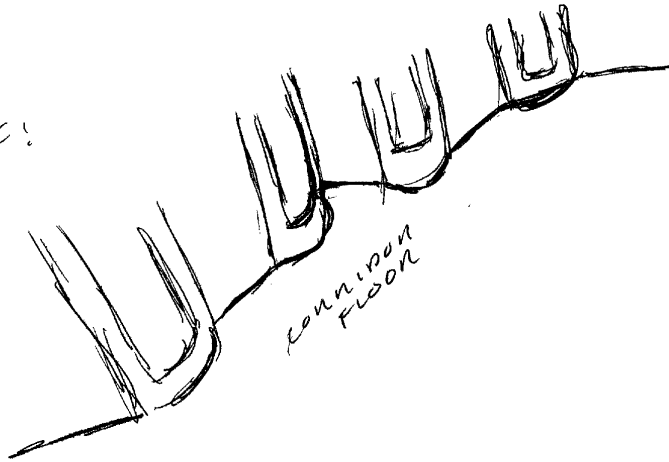
WALLS

CUSTOM-COLORED WALLS

"FUTURISTIC" PATTERN

UNEVEN

SK:



S4 1/2

↑ WHEN WALL MEETS
 THE FLOOR OF THE
 (CORRIDOR?) THE WALL IS
 UNUSUAL, HAS ROUNDED PLACES
 WHICH HAVE A "PUFFED"
 "DOORFRAME" APPEARANCE.
 "CORRIDOR" IS VERY IRREGULAR

(5)

MOVIE TO FILMS OF USS
DESCRIBE WEAPONS IN USS.

S2 D M O T, and R/S.

S4 1/2
PULL AT SIDES
CLICK INTO PLACE
PUSH + PULL LOADS.
EQUATORIAL ATTACHMENT

S7: "PUSH-PULL-
CLICK-CLICK"

S4 1/2 IMPRESSION OF AN OUTSIDE

"TUBS" OR "COVER"

WEAPON SHOWS OUT OF "TUBS"
"FINS" SNAP OUT AS IT COMES
OUT.

HAND-HOLD. - SHOULDER FIRING.
AIMED UP AT AN ANGLE.

ADL BAK.

L.A.W.



S2 D M 9 T , R A M

ENV!

NEWCOMERS - 'NEWBIES'

SURPRISE ATTACK. ON NEWBIES.

HUGE TREE STUMP (6'-8' ACROSS)

SOMEBODY IMPORTANT DIES BESIDE IT.

VISITOR
OBSERVER
MAN

TALL
VERY TALL
ATHLETIC BUILD
GRAY HAIR

UNIFORM OF SOME SORT.
LIGHT COLORED
GRAYISH GREEN

MAN ACCOMPANIED NEWBIES.

8035124 5ND
1003.

~~SECRET~~ NOFORN

TASKING:

Project: 8928
Viewer: 018
Session: 02
Date: 26 SEP 89
Times: 0912-1003
Inclm: Yes
Mode: Solo

- Tasks:
1. Describe the concealed weapon(s).
 2. Describe the location of the weapon(s).
 3. Describe how the weapon(s) is/are readied.
 4. Describe how the weapon(s) is/are used.
 5. Against what is/are the weapon(s) used?

HANDLE VIA SKEET CHANNELS ONLY
~~SECRET~~ NOFORN