

~~SECRET~~/NOFORN

PROJECT SUN STREAK

WARNING NOTICE: INTELLIGENCE SOURCES AND METHODS INVOLVED

PROJECT NUMBER:	8904	SESSION NUMBER:	02
DATE OF SESSION:	03 FEB 89	DATE OF REPORT:	03 FEB 89
START:	0907	END:	1025
METHODOLOGY:	CRV	VIEWER ID:	095

1. (S/NF/SK) MISSION: To access and describe a target structure shown in overhead photo imagery.

2. (S/NF/SK) VIEWER TASKING: "Continuing in Stage 4 with yesterday's target, understand the encrypted coordinates to be the inside of the structure you found. Access and describe its contents and purpose."

3. (S/NF/SK) COMMENTS:

a. Inclemencies: Chronic cough.

b. 095 developed excellent site contact, giving detailed descriptors of the building's surroundings, first floor area, and areas throughout the building. Perceptions were coming to 095 clearly, and were delivered in a straightforward manner. Any time perceptions became unclear, 095 took a break from the signal line and allowed the problem to dissipate. The only recurring problem faced was an amount of confusion about the tasking of "the purpose" of the building. This confusion was repeatedly addressed, and resolved itself into a "dual purpose", with separate, but equal "chains of command". Due to session length and a growing tendency toward ADL, the session was ended before the EEI of "event" and the search could be done.

c. Summary of Information enclosed.

4. EVALUATION:

3 encl: Viewer's summary
Session transcript
Tasking sheet
HANDLE VIA SKEET CHANNELS ONLY

~~SECRET~~/NOFORN

CLASSIFIED BY: DIA (DT)
DECLASSIFY: OADR

~~SECRET~~/NOFORN

Session Summary
Viewer 095
3 February 1989
0907-1025
CRV

Site is a wide, very long building. It is large, about the size of a city block, however there are streets only on the left side (2 lanes) and the front (4 lanes).

The main features inside are narrow hallways with many offices and rooms off of them. There is a feeling of blocked off areas as well as the idea of rooms within rooms. Ideas associated with the rooms are administration and bureaucratic. (ADL/S of polygraph operator--when viewing concept of room within rooms).

On the first floor is a wide, main hallway which cuts across the building width-wise. It is wide and there is an information/check-in desk at each end. The hallway is lit by hanging lamps "like" chandeliers but they are not ornate or fancy.

On the first floor is also a room which is sparsely decorated, it appeared (ADL/S) to have two tables in the back with people behind them and nothing in front of them as to allow room for other people to que up.

The "director" (monitor cue) of the building has a specific title of which the word director is not a part. He has a corner office on the top floor which faces both of the streets. The office has an interim office in front of it occupied by staff. One must walk through this office in order to reach the 'director's office.

The building has a civil-military feel. There are two separate but equal functions/activities conducted there each with their own chain of command.

The cue "information of interest to tasker" evoked the ideas of corruption, connection, interrelations, politics (on a bureaucratic not geographical scale), interplay, exchange, tracking, and decisions. There was also the idea that the duality of the organizational structure of the building will make this difficult, cause confusion and many errors.

The cue "information of interest to the tasker" also evoked the image of a middle-aged man with blonde thinning hair (brushed almost straight back) with a round face, blue eyes (crows feet) and a light complexion.

095
Feb 89

Ft Meade
0907
Monitor 018

Pl: rough
AV: none

A-2 D A1 E1 T I AOC A/S

[inside]

428013/
839461.

A. In out of angle across
or in
structure

brown
white

long
narrow

hallway

A/S
plate walls

54 1/2 faintly wide building, very long.

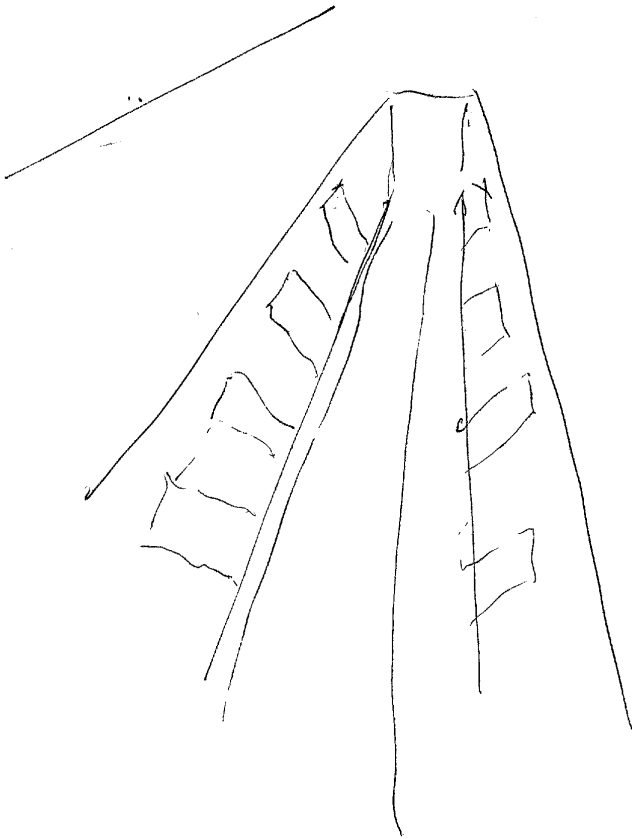
S2 D A1 E1 T I AOC ALS
T I

58% constant low pitch noise

rooms.
office

gray
blanks

A1 BE
degraded
very blocky.

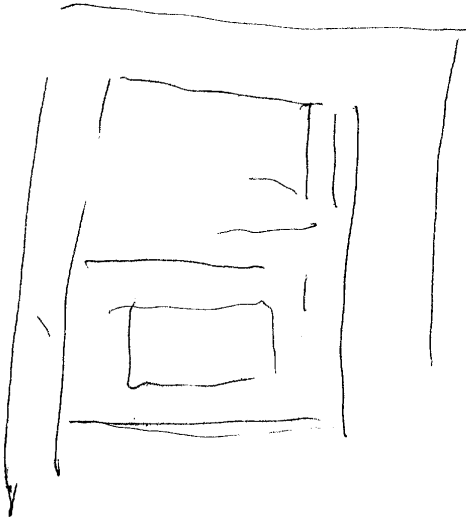


813

S-2 D A1 E1 T I AO A/S

54%. strong feeling of blocked off views

A/S
nose like.



brass
beiges.
tough

AO BK
school.

wooden desks

administrative
bureaucratic

811

AO BK
smaller
not visible
uniform galling.

A/S.
rooms with
rows

S-2

D

41

E1

7

7

#00

h/s

4

[a room of interest
on the 1st floor]

light

1.

cool

open
aproxly 100 feet

[1st floor
hallway]

Grand
open.

1st floor.

A/S.

brief view of
two tables on
back end of
room with people
behind + nothing
in front as to
allow room for
queing up.

information/check in
desk

4



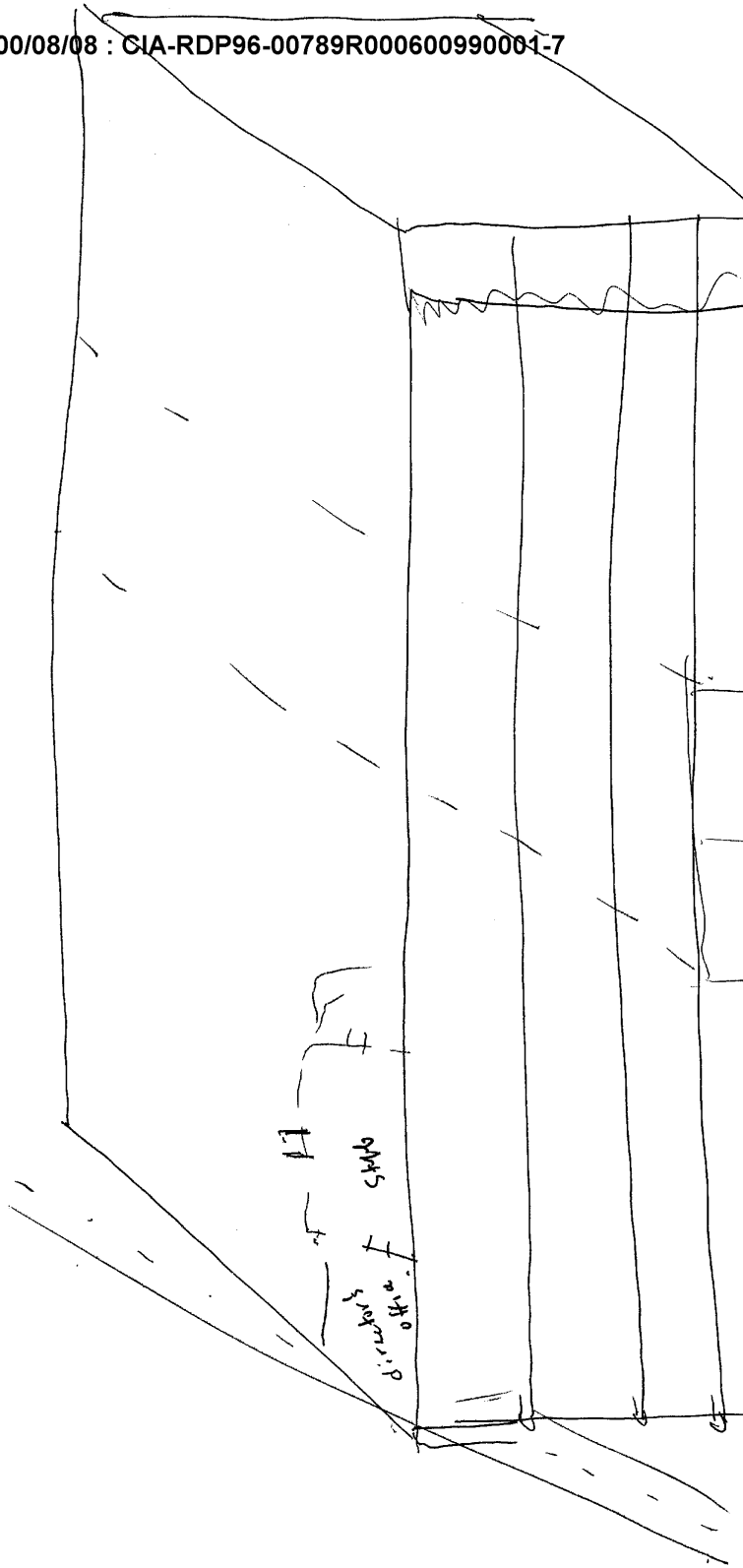
54 1/2 Main hallway on 1st floor cuts building in
half widthwise. has hanging lamps
"like" chandeliers but not a feeling of
ornate or fanciness

[if there is a "director" go to his office"]

54 1/2 up on top floor corner office. from his office
can see busy streets on both sides. 2 lanes
on short side 4 ^(more?) lanes street on long side

Building is large. seems to be the size of
a block but I can't find "right" side street
& back street when I probe.

54 1/2 Director's (is not right word - has a specific title
of which the word director is not a part) office.
has an ~~inner~~ interim office in front of it with
staff must work thru this to get to
his office.



S-2 D A1 91 T 1 Ad 7
A/S

A/S
Polygraph
operators.

S4 1/2: rooms within rooms.

Civil-military feel.

A0 u3k

K&B.

[purpose]

S4 1/2

Idea of two different functions/activities - separate
but equal ~~two~~ two different chains of command.

Break

8

S-2 D AI EI TI T I AOC A/S

[Resume]

428013
839441

A. ~~was~~ ~~and~~ ~~curved~~ ~~space~~
curved ~~down~~ ~~space~~ ~~curved~~ ~~up~~.
man

B. —

Ad-3L
light 1016.

428013
839441

A. ~~wavy~~ ~~and~~ ~~soft~~
soft
B. —

corruption
connection.
interadvisors.
politics.

54 1/2. Quality of structure (organizational) will make this difficult
and cause confusion many errors.

man.
Blonde thinish hair.
roundish face
blue eyes.
Crows feet.
hair brushed
mainly straight back.
light complexion.

F2 D A1 E1 T1 T 1 AOC A/S

interplay
exchange.
tracking
decisions.

AOCBK
conflict between
military +
civilian.

~~SECRET//NOFORN~~

WORKING PAPER

3 FEB 89

TASKER

1. Encrypted Coordinates: 428013/839461.
2. Tasking: Access and describe the target site at the above coordinates.
3. Required EEI:
 - a. Describe the contents of the target structure.
 - b. Describe the key purpose.
 - c. Describe any key activities supporting this purpose.
 - d. Describe the key event associated with the target (i.e. the key event of particular interest to the tasker). Remain open to the possibilities of this key event being in past, present, or future time, and also to the possibility that the event did not/is not/will not occur.
 - e. Through your own search technique, provide a set of map coordinates for the target site. Also note method used, and any perceptions gained.

~~SECRET//NOFORN~~