

Stanford Linear Accelerator

(Menlo Park, off Sand Hill Road)

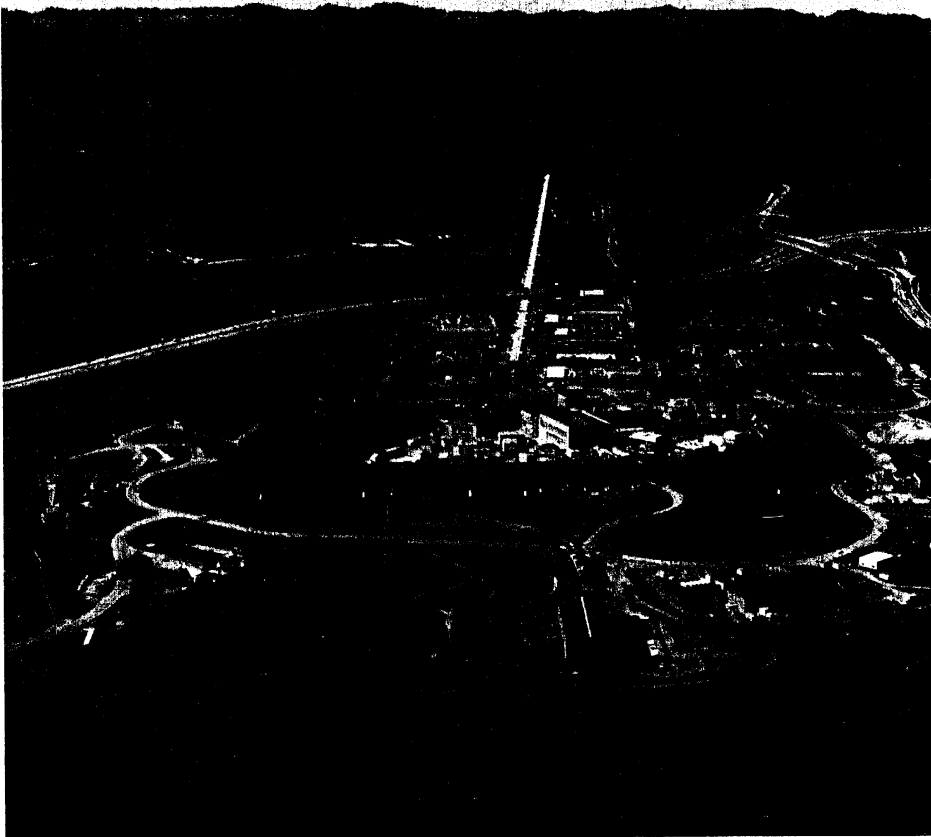
Directions: SEE MAP; Take Laurel St. North to Glenwood; turn left on Glenwood; cross El Camino and follow Glenwood as it turns into Valparaiso Ave.; follow Valparaiso to Alameda De Las Pulgas; turn left on Alameda De Las Pulgas and follow to Sand Hill Road; turn right on Sand Hill Road; follow Sand Hill Road out towards Portola; Park along the side of the road where you can get a good view of the Stanford Linear Accelerator.

Target: The target is the long building containing the Stanford Linear Accelerator. The Stanford Linear Accelerator is located in the grassy foothills of Menlo Park.



CPYRGHT

Approved For Release 2000/08/08 : CIA-RDP98-00789R000500080001-8



CPYRGHT

h-m

0001-8

UNCLASSIFIED

WORKING PAPER

TASKER

1. PROJECT: 8910-11 (W-4).
2. ENCRYPTED COORDINATES: 8910-11.
3. BACKGROUND: This target was selected by SRI. SRI reserves the right to send a beacon to the target site.
4. ESSENTIAL ELEMENTS OF INFORMATION:
 - a. Describe the target.
 - b. Describe the key activity at the target.
5. Submit sketches in support of your findings.

6

UNCLASSIFIED

UNCLASSIFIED

WORKING PAPER

TASKER

1. PROJECT: 8910-11 (W-4).
2. ENCRYPTED COORDINATES: 8910-11.
3. BACKGROUND: This target was selected by SRI. SRI reserves the right to send a beacon to the target site.
4. ESSENTIAL ELEMENTS OF INFORMATION:
 - a. Describe the target.
 - b. Describe the key activity at the target.
5. Submit sketches in support of your findings.