

SESSION SUMMARY

SESSION: 2 NOV 87, 1125-1206 HRS

VIEWER: 011

First impressions are of a long, rectangular, three-dimensional object which has a short, round cylinder on one end (see sketch, page 3). The object feels like it is emersed in some kind of liquid. When I look up I can see blue, but, all around me is dark (AOL/AI- feel like a scuba diver).

Following this object to its next location we find lights, shades of grey, a flash of light, reds, reddish brown, curves and angles. From 1000 feet above this object there are curves and loops. Inside the loop is a criss-cross design (see sketch, page 5).

While trying to follow this object from its present location to its next location the only events of significance perceived was flashes of light. Somewhere during the first third of this journey was a single flash of light. At the final leg of this journey there were a series of directional flashes of light (AOL-directional lighting found on airfield runways).

The time window from location *1 to location *2 seems rather limited. It can be measured in hours or days rather than weeks or months.

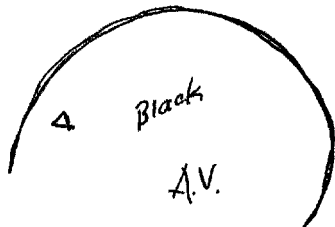
VIEWER 011
8718

PI's - none

SG1J

2 OCT 87

1125HRS



496501
336480



Handwritten notes:
K across 1915le up -
angle across of flat
hard
Structure

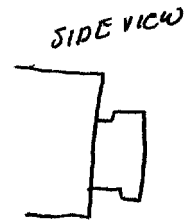
486501
336480



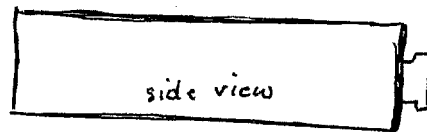
R. across, angles,
angle across, curving, curving
hard
structure

S-2
dark blue
green
red
straight
hard
angles
grey
light grey
flat
hard
vertical
purple
blue
green
red
dark
blue
hard

S-2



AOL break
camera



S-2 D AI EI T I AOL A/S

blues
shades of blue
darkness all around

1/2 - looking up. blue, blue, all around is dark, feeling of being immersed.

AOL break

AI break
feel like I'm a scuba diver

S-2

D

AI

EI

T

I

AOL

A/S

OBJECT?
NEXT LOCATION?

round
curving
angles



lights
lights

~~set~~ curve
curving

shades of gray

flash of light

reds

reddish/browns

curving -
angles

complex

OBJECT?

flashing
flashing light
pulsing

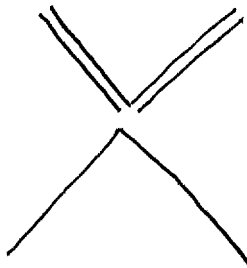
From 1000 of high speed camera
Keruech

angles

square

criss-cross

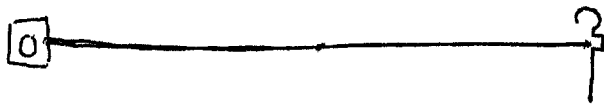
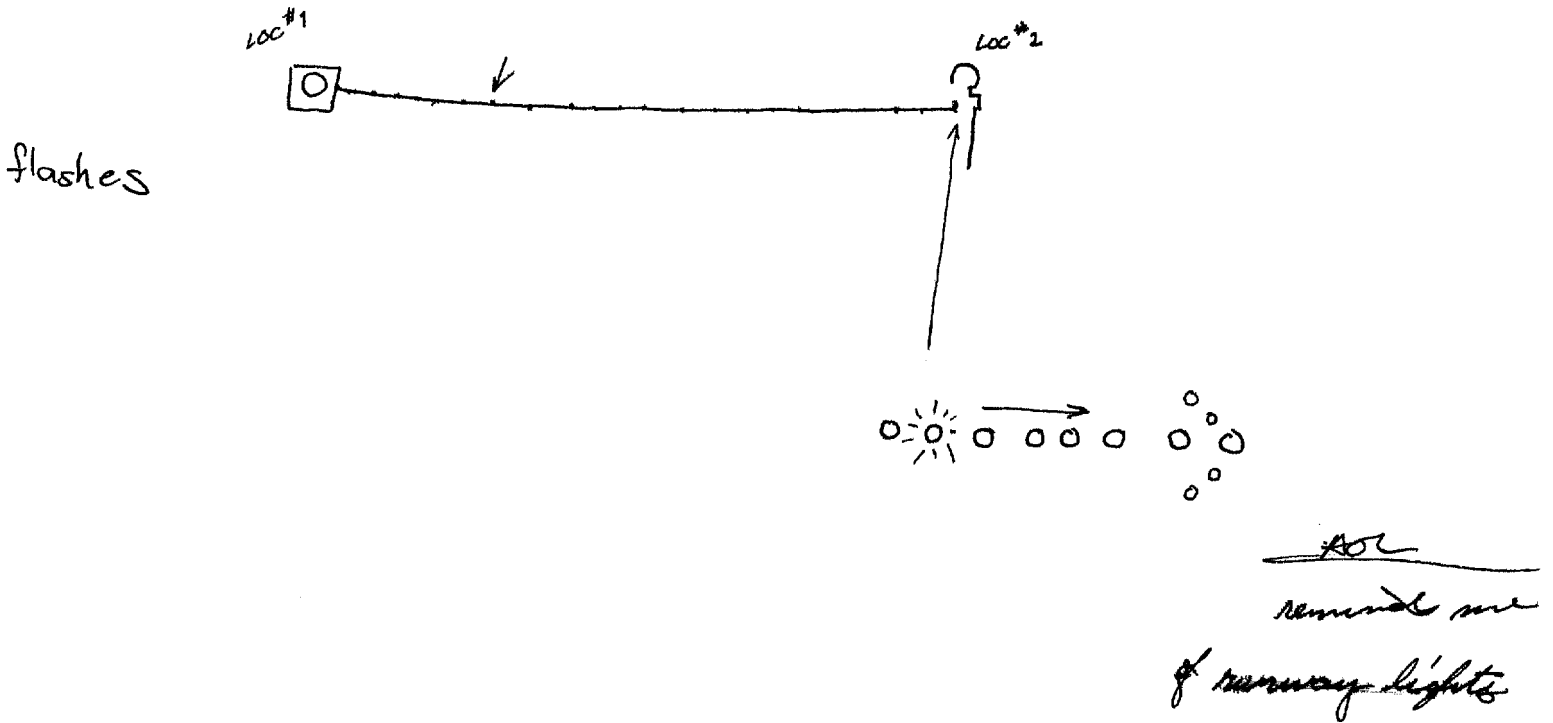
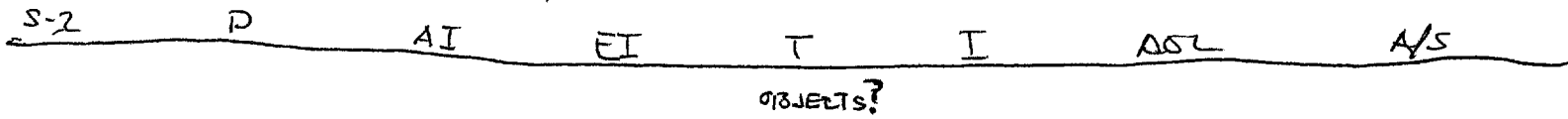
horiz



A, curving, loop,
circle curving
loop/curve, curving
loop/circle, curving
angle

VIEWER 011

From the first point to present location describe the movement?



time frame? - not very long hours or days
 not weeks or months

END 1206 hrs