

~~SECRET~~/NOFORN - HANDLE VIA SKEET CHANNELS ONLY

PROJECT SUN STREAK (U)

WARNING NOTICE: INTELLIGENCE SOURCES AND METHODS INVOLVED

PROJECT NUMBER: 8714 SESSION NUMBER: 2
DATE OF SESSION: 24 NOV 87 DATE OF REPORT: 30 NOV 87
START: 1330 END: 1446
METHODOLOGY: CRV VIEWER IDENTIFIER: 003

1. (S/NF/SK) MISSION: Describe a past event, occurring in the Spring of a given year, associated with the coordinates 9732/1157.
2. (S/NF/SK) VIEWER TASKING: 003 was informed that the session #1 "doorknobbed" only a single element of a larger event. The viewer was directed to reacquire the site and to describe the event in full. At one point, 003 was directed to acquire and sketch the "key component of the device".
3. (S/NF/SK) COMMENTS: 003's summary speaks for itself. Excellent session.

SG1J


CPT, USA

~~SECRET~~/NOFORN - SKEET CHANNELS ONLY

CLASSIFIED BY: DIA-DT

DECLASSIFY : OADR

Summary

Site is located in a barren area, desert-like, with little vegetation, lots of rocks, and brownish-tan hills somewhere in the vicinity. There are a few to several low structures involved which seem to have thick walls, low ceilings, and few or no windows. The sense of being "out in the middle of nowhere" is quite pronounced. People are associated with these structures, but don't seem always to be present on a continuing basis. The event associated with the site involves a fairly large group of people, both male and female, and they seem to be dressed in non-Western styles of clothing, "like" Third-world. The setting is non-US. There is the sense of antagonism, anger, anxiety, confrontation, insistence among these people. A sudden impression is present of intense heat, fire, smoke, and flames. The idea of conflagration and violence is present. This "conflagration" is instigated by some outside agency located at a distance and at a higher elevation from the site. An aircraft seems to be orbiting the site, either directly involved or in an observational role. The impression of the actual effects is that the heat is "driven"--it wouldn't exist under normal conditions but is forced to be there. The site that is thus under "attack" seems to involve some sort of "staging area," connected with some sort of idea of resistance (AOL Afghanistan), but is not really of any extraordinary significance. The agency directing the destructive force at the site seems less interested in what the target is than in seeing how well the destructive media they are using works; it's almost a clinical evaluation with real people as the target. The people thus targeted would not be surprised to be the object of some sort of aggressive activity in response to some of their own attitudes and activities; but they are very surprised at the form the attack upon them takes.

The actual equipment used doesn't superficially look like a weapon; its effects are fully out of proportion to its superficial appearance. It could even be configured in different ways and still produce pretty much the same effect. Effects on target involve a loss of cohesion at a (AOL/S) molecular level. It's as if all the little component parts of an object are put into great agitation or turmoil, generating quantities of heat and creating disintegration of object-integrity/structure. Disruptive or disintegrative are appropriate words to describe the effects. The heat comes from the effects and not from the operant object/weapon itself. Impression of some sort of magnetics involved for control. AOL impression of a cathode ray tube. Size may be about 3'x2.5'x2.5'. Entire apparatus requires specific transportation--it's fairly large and bulky and complex. Incident seems to have occurred less than two years ago.

*VIEWER 003
24 NOV 87*

Paul
24 Nov 87
Ft. Meade, Md
Ed
1330

#15

.52

grey
smooth

rounded
to bent
low
flat
curved
hard
steel

rough
dark

person
people

Sandy
dry
hard
lumpy

flat
small
sharp
scaly
inside

structure

dark
low

5 1/2 did seem to be intended as habitation for people

by windows
walls

thick

low

ceilings

dark

empty

shelter

solid

ARL Bl
bunk
shelters
artillery bunker

S4 1/2 previously perceived people not necessarily present, but sense of them is.

S4 1/2 structures seem isolated, "out in middle of nowhere". People are associated with them, but not necessarily on a continual basis.

ARL Bl
explosive
fuel
CBR
etc.

event (c)

S4 1/2 event involved people. Several people. Seem both males & female. Not dressed in western style.

antagonism
anger
anxiety
apprehension
misunderstanding

ARL Bl
chills

S2

ALS

non US

S4 1/2 non US setting - Some US people maybe involved.

event (c)

for bk
there is a
report
in Afghan.



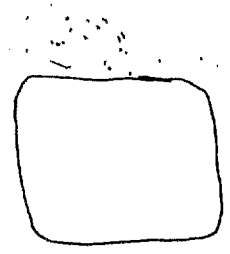
S4 1/2 shaped kind of like loaf of bread. Transient population. Sense that people are taken there rather than come on their own. People aren't particularly happy to go there. Sense of perhaps some sort of compulsion/coercion.

excitement
fear

break

S4 1/2 small group of people being others - maintaining use than four to area of activities but do something to them.

4a



SUI

S 2

D

AZ

E 2

T

I

for

A/S

AZ BK
Random
+ mixture
full spectrum

are BK
hand
LAKK

green
grey
magenta
hard
cool
hot

AZ BK
hot

black

AZ BK
voluntarily

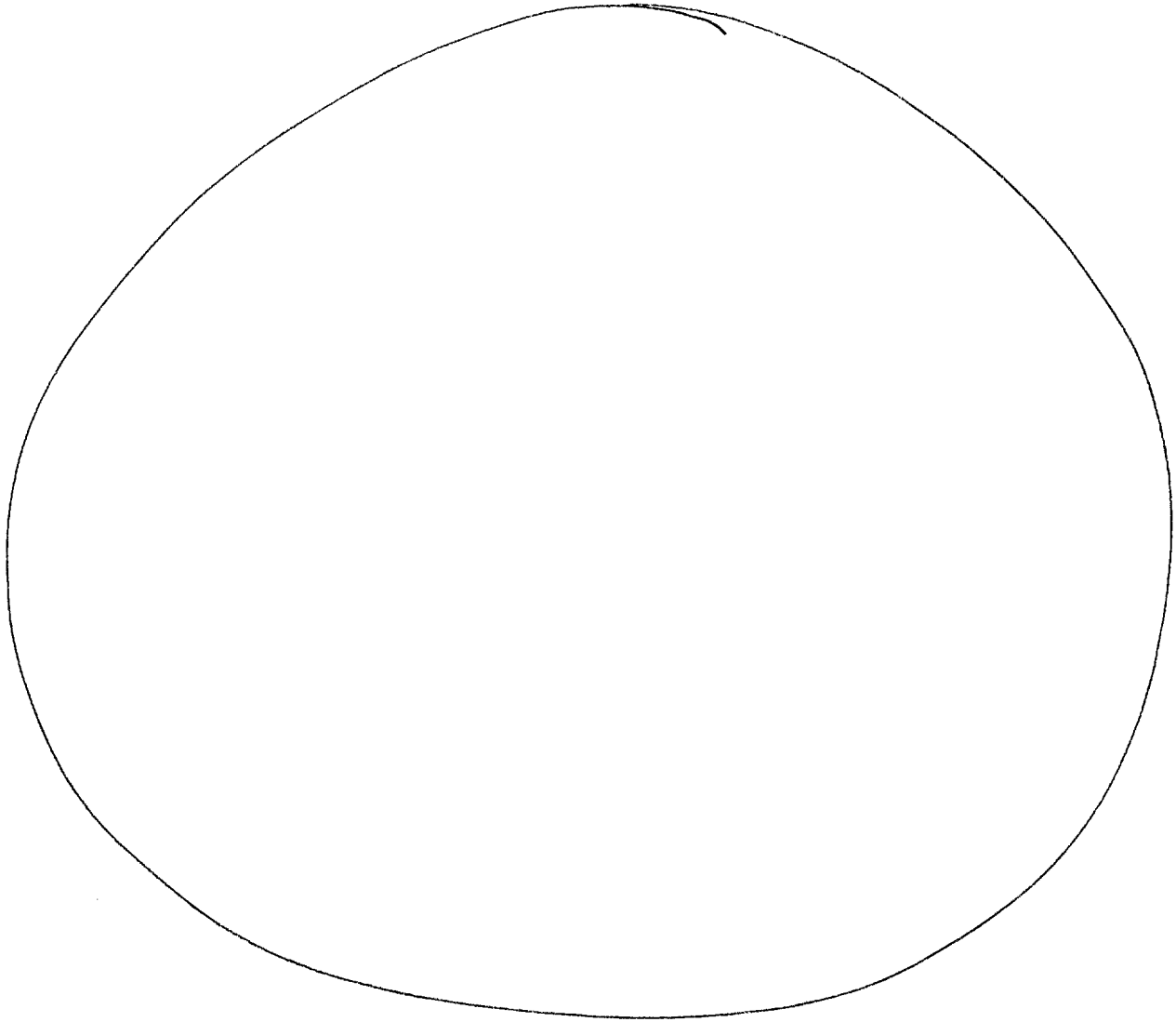
hot
black
magenta

without
employment

signature

yellow
orange
moving

dancing



507

6

52

D

A I

F I

T

I

the

the

9236
Yuk

Burnt
Smell

Crumbly
bright
glaring

distance

Popping
Sound

hissing

structure

Surrounded

open

over

Set 1/2 heat + smother + jammed imposed from distance - like "standoff distance. Sense of being up. Overlooks. Sees below + around. Line of sight. Orbiting area

diver



52
W4

7
H
H

life heat is driven. wouldn't exist gives normal
cond. Appz.

infant
heat

Structure
pepp

anim

anim

Spaces between structures people pass thru "like"
streets or roads Some of autonomy - ~~different~~ organization
resistance. Staying place.

lean
throat

throat

passer

control

around

gathered
concentrated

meter

cool
smooth

would
long

SUZ

S2

D

A1

E2

T

I

AL #/5

improper
weapon

possible
stingee

yellow
orange
red
green
blue
purple
brown

curious
solid

parts
assembled

S+1/2 Some agency at a distance is doing something that
causes "conflagration" to occur at structure location.

Agency I - those that act at a distance
~~location~~
Site - place that is acted upon.

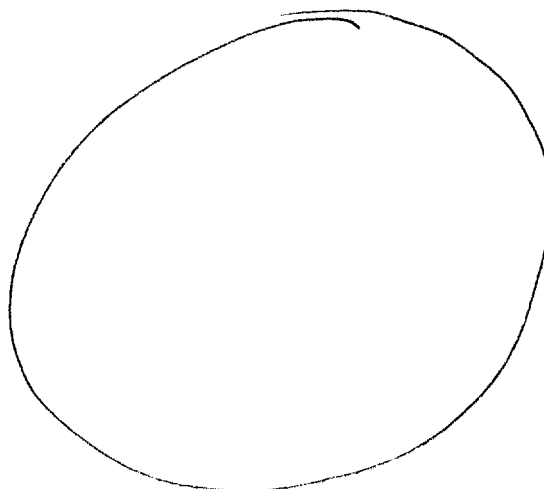
organized

excited
antagonists

testing
directing

S2

... but more interested in it + how well it actually works



SUI

52

B

A2

EZ

T

I

Apr

PLS

people
at
site

unexpectedly

in
squad

S4's think they're prepared, but aren't prepared for what
actually occurs. People are exposed in activities or purpose
of whom Agency & dissonance & can justify violent actions
because of.

military
R&D

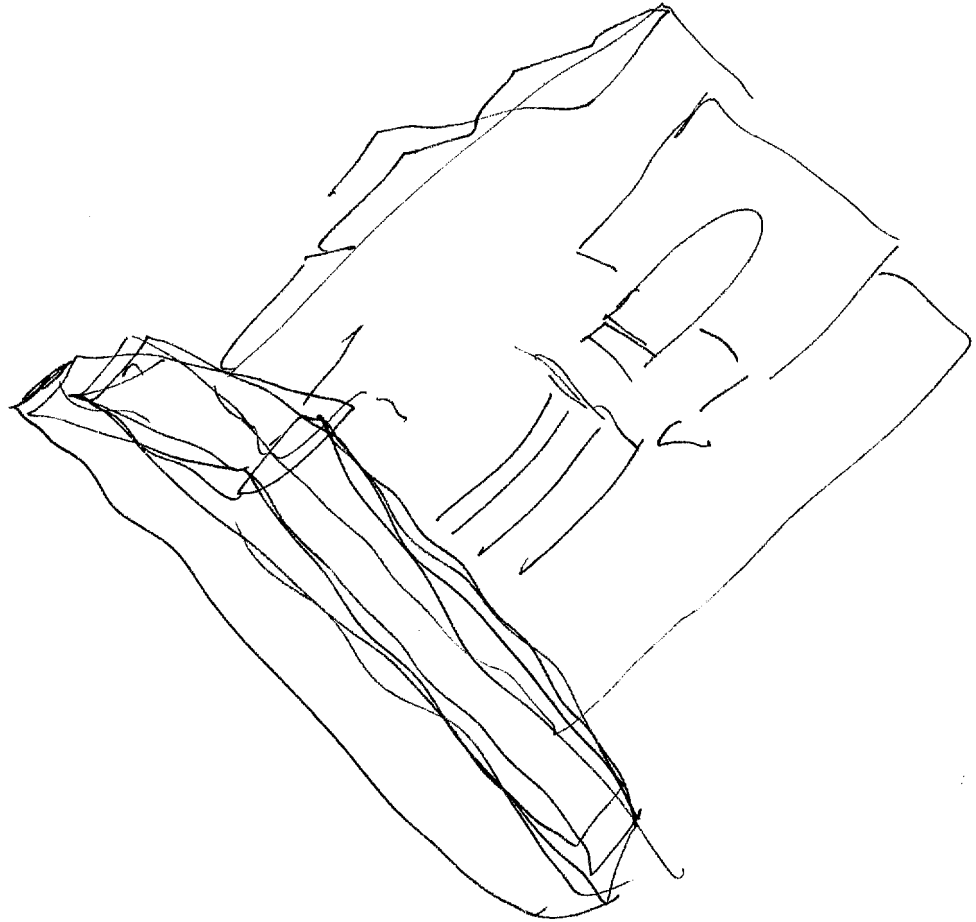
disturb

interact the
high-tech

the BK
mean
upons
before
violent

- S4's don't superficially look like a weapon sort of a thing,
but effects are pronounced all out of proportion to appearance
"Like" it ~~can~~ could be put together in a lot of different configurations
& still function same way.

S4's mess is excitable. Lowly cohesion guarantees
heat like part in function. "b-b" has next about
feel to a microwave. exact effects are more structured



SUI

52
Sels out:

disruptive or disintegrative. Heat comes from what it does, not from object itself.

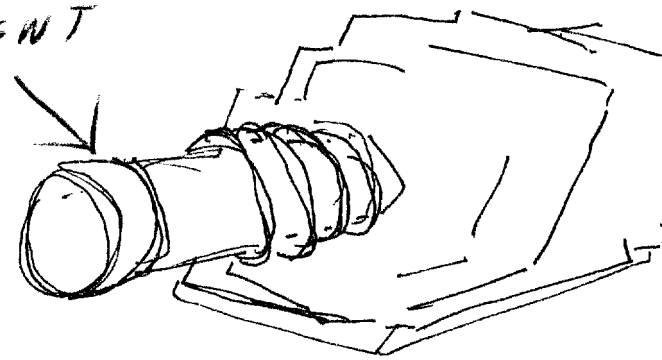
Key part (c)

Surround

bound
Sort of
small
surround

Ving

CATHODE RAY TUBE COMPONENT



Sels involves some sort of magnetic control. Reminds me of a Cathode Ray tube

Size about 3' x 2.5' x 2.5'

Entire apparatus requires specific transportations - fairly large + bulky + complex. ~~How not~~
Doesn't seem more than 2 yrs in part
1946

VIEWER 003
8714

NOV 87