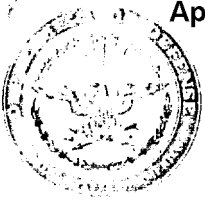


~~SECRET~~



DEFENSE INTELLIGENCE AGENCY

WASHINGTON, D.C. 20301-6111

19 Nov 87

DT-S

MEMORANDUM FOR DEPUTY DIRECTOR FOR SCIENTIFIC AND TECHNICAL INTELLIGENCE

SUBJECT: SUN STREAK Operational Report - 8713 (U)

1. (S/NF/SK) During the period of 5 October 1987 through 29 October 1987 inclusively, four remote viewers conducted eighteen sessions in an effort to determine the nature of current activity at 14752/1213 with results substantially as follows:

a. (S/NF/SK) Viewer 079 perceived the target site as a large, rectangular, multi-level, concrete-reinforced structure. Additional smaller structures in the target area played a supporting role. Located immediately adjacent to and directly behind the main target structure, is a circular-shaped area harboring smooth, round, cylindrical, pointed, heavy devices that men prepare for launching. Once launched, the rocket-appearing devices "unfold and spread out" (See sketch at TAB A). In an ancillary action "a man-made light, from a (second) man-made vehicle, hits the object (device) with rays of light. The light has the ability to slice, cut, or sever the object initially launched (See sketch at TAB B). The exterior of the rocket appearing device is dull in color. "Silver blocks and padding" were observed within the object. The overall site activity is military-connected and shrouded in secrecy. Viewer 079 repeatedly observed the presence of a "handful" of an elitist, VIP-type group selected to learn, observe, and report on the ongoing activity. Members of this select group appear politically involved and subordinate to a high-level personality of significant political stature. Viewer 079 remarked that

WARNING NOTICE: SENSITIVE INTELLIGENCE SOURCES AND METHODS INVOLVED

HANDLE VIA SKEET CHANNELS ONLY  
SPECIAL ACCESS REQUIRED

CLASSIFIED BY: DT, DIA  
DECLASSIFY BY: OADR

~~SECRET~~

~~SECRET~~

members of this elite group all wore warm, black coats to counter the cold, prevailing Nordic weather of the target site.

b. (S/NF/SK) Viewer 011 perceived the overall target area as being located at the foot of a hard, rough, jagged, high, land feature with a dark, flat surface in a mountainous area. The target area consists of a land-water interface with the presence of a grey-domed, hard, structure constructed on top of a square, hard, chalky, structure described as a mountain fortress built on some sort of platform (See Sketch at TAB C). There is a notable presence of a vertical shaft and an elevator. An overview of the area reveals a body of water bordered on three sides by land (See sketch at TAB D). The concept of ships, submarines, and underground areas remind one of activity associated with the North American Aerospace Defense Command (NORAD). Within the square structure are arched tunnels and caverns associated with a warehouse atmosphere (See TAB E). This entire complex situated in a very cold area of the world, seems to be underground. The target site radiates energy that ultimately results in propulsion and a star-burst explosion. The target activity is functionally related to propulsion as well as the placement and motion of a cylindrical appearing object with drooping wings (See TAB F). The surface is black and gritty (like carborundum). While focusing on mission objectives of this apparatus, Viewer 011 stated, "I perceive this apparatus as originating from a very northern base (like the USSR), traveling through the Bering Straits, south into the Pacific Ocean (area) and then (traveling) in a north-south zigzag pattern somewhere east of Japan and west of Hawaii (See TAB G).

c. (S/NF/SK) Viewer 003 described the target site as a dark, quiet area, a land and water interface located in a cold northern area of the world. The target is a black, rounded cylindrical, tapered, metallic, windowless structure (TAB H) that conveys a cavernous feeling and the presence of a tall airy tower (TAB I). Cyrillic writing is associated with it. Personnel working within the structure wear dark blue coveralls. The multi-level structure is of heavy metal construction with ladders, rails, and catwalks. The structure operates in a dark, cold, rough, body of water, in an atmosphere of quiet amid crunching sounds. Allied with the target activity is the presence of a plotting table (TAB J) and the notion of a central control facility responsible for the direction of a special, regulating activity. It is a military related command and control activity dealing with contingencies surrounding friendly and unfriendly zones. The activity takes place over an extended period of time in terms of hours and days and involves a series of small successful encounters. The mission is considered secret, crucial, intricate, complex and has the potential to cause political embarrassment in an ongoing political power struggle. Viewer 003 concluded by stating, "The entire apparatus is (established) to provide support to a special group of five to seven people in the accomplishment of a specific mission.

~~SECRET~~

~~SECRET~~

Approved For Release 2000/08/08 : CIA-RDP96-00789R000200110001-7

d. (S/NF/SK) Viewer 018 perceived the target site as a massive, immovable structure (TAB K) set on the ground in a salt water environment (possibly ice). The target activity is related to the controlling influence of a console (TAB L) regulating the activity of a missile-appearing device that leaves a tell-tale contrail from the horizon to an object in space. A predominance of male personnel is responsible for the conduct of this activity.

2. (S/NF/SK) COMMENTS: The activity of intelligence interest appears to focus on a foreign-flagged submarine operating from a secretive northern cold weather base and is responsible for tracking the activity of ships and objects launched in space. Viewer transcripts and summaries are available for review at your convenience.

SG1J



12 ENCLOSURES  
TABS A thru L  
SKETCHES

LTC, USA  
Branch Chief

Approved For Release 2000/08/08 : CIA-RDP96-00789R000200110001-7

~~SECRET~~

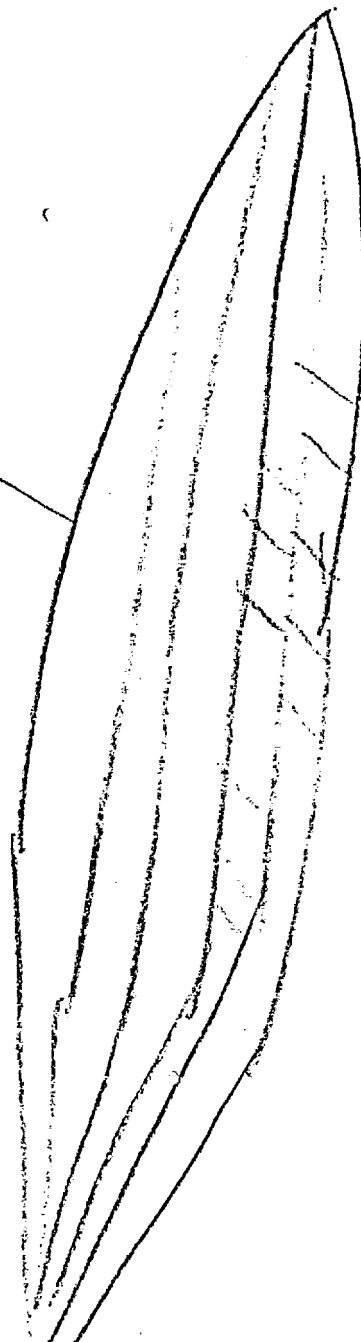
TABA

OBJECT UNFOLDS  
INTO FLAT  
SURFACE AT  
DESTINATION

Object - Laid out - Flat

Object  
Spread  
out

when  
preparation  
phase



spread  
object

1/13/87  
3713  
07CCT87

~~SECRET~~

~~SECRET~~

Light hits object (in space?)  
reflects & cuts light

MAN MADE OBJECT  
REFLECTS LIGHT  
RAY(S) THAT CAN  
SEVER, CUT,

TAB B

VIEWER 079  
8713

if there - ~~was~~

27 Oct. 87.

Light may cut this object - ~~located~~

M.I.S. - none  
A.V.s - none

S-2 D AI EI T I AOL N/S  
OVERHEAD?

~~SECRET~~

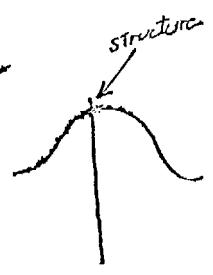
shades of gray  
dark gray  
light gray

cool  
hard  
chalky  
powdery

incline  
high  
rounded

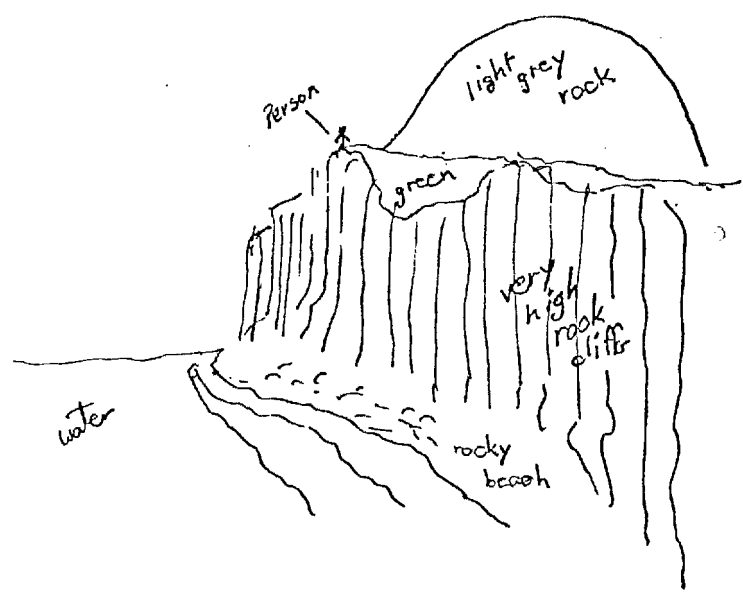
rock

rough  
chalky



people  
structure?

green square

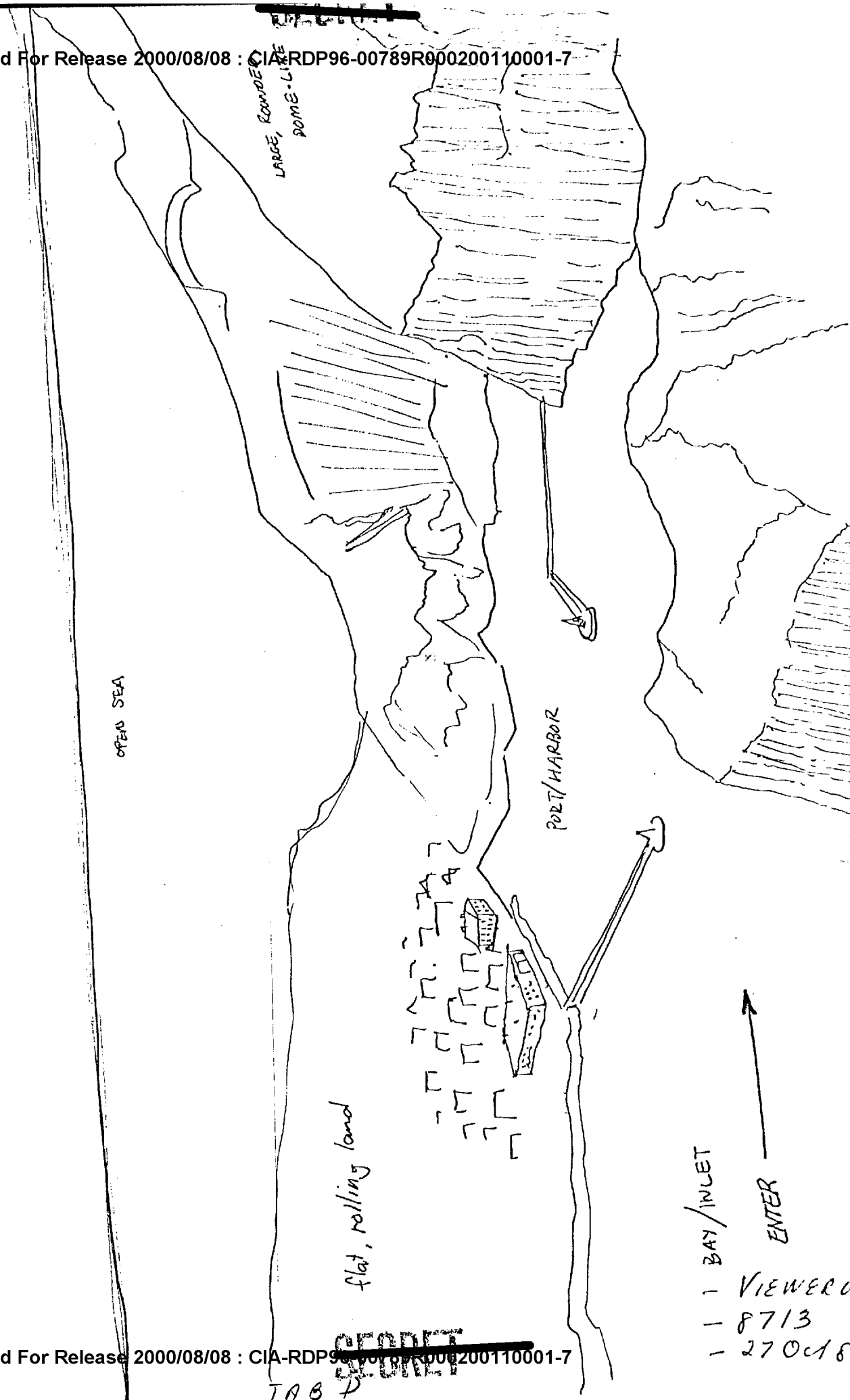


T A B C

~~SECRET~~

VIEWER 011  
8713  
27 Oct 87

ANALYTICAL SKETCH



OPEN SEA

LARGE, ROUNDER  
DOME-LIKE

PORT/HARBOR

flat, rolling land

BAY/INLET

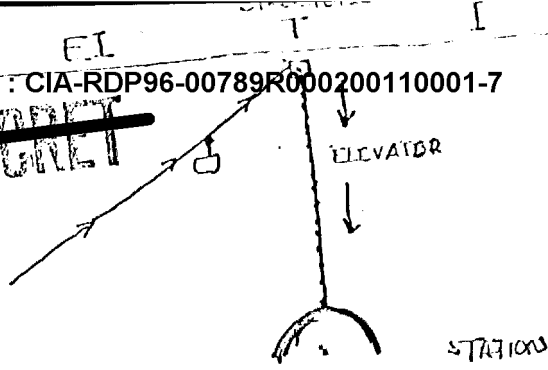
ENTER

- VIEWER
- 8713
- 27 Oct 68

~~SECRET~~

TAB D

~~SECRET~~



AOI break  
reminds me of  
a cable car stop

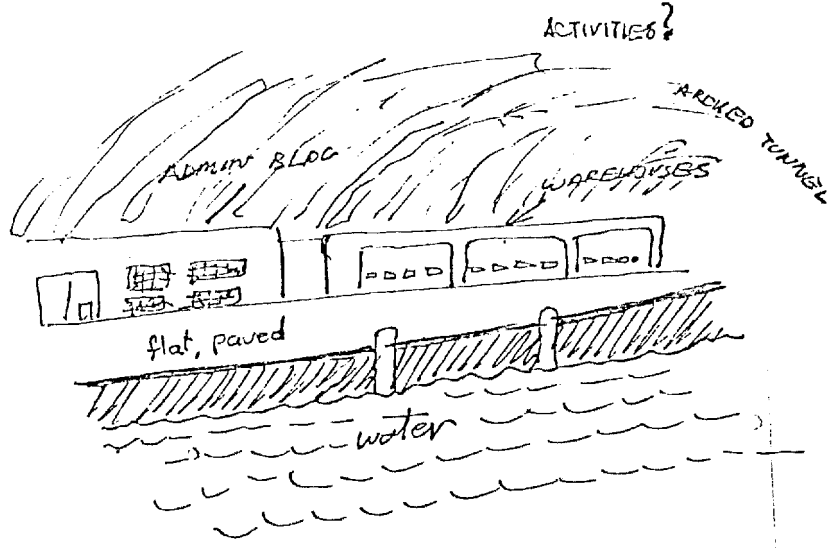
cold  
dark  
dripping  
rounded  
arched

hard  
drippin  
sloshing

water

AOI break  
reminds me of  
an underground  
sewer."

ECHOING - damp



AOI break  
like a dock,  
or pier, but in a  
cave

TAB E-1  
~~SECRET~~

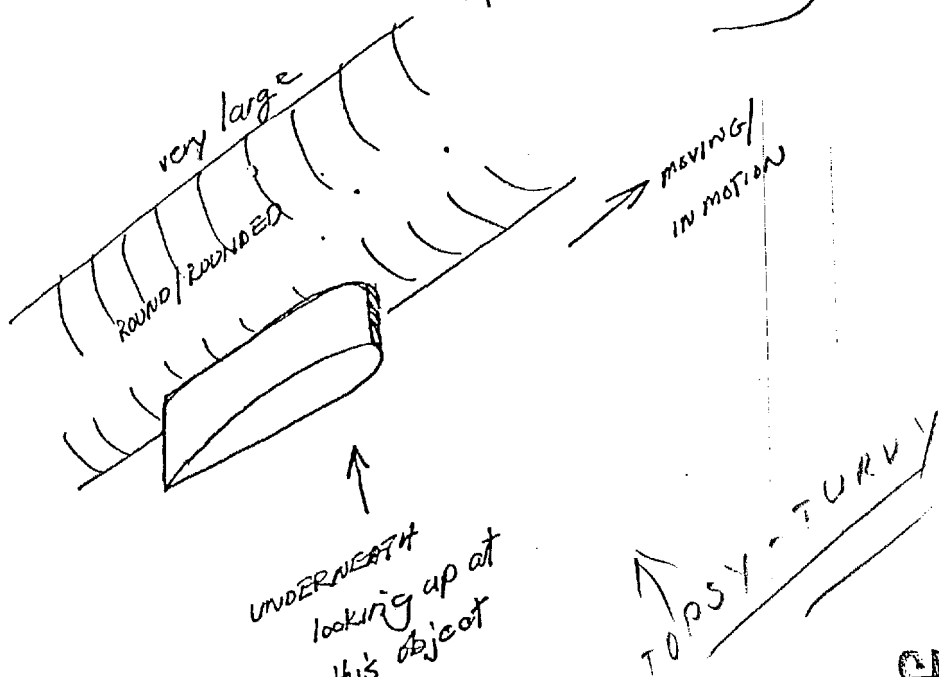
VIEWER 01  
8713  
270687



from 20 feet at on the object something should be visible

moving up,  
angle up, curving  
angle across,  
down  
" " round  
B structure

S-2?  
round  
round  
curving  
pointed



appears like an upside down submarine

AOL tracks like looking up at a large dirigible

12.5.11  
8713  
29 00 00

~~SECRET~~

not break  
like a re-entry  
vehicle

4 1/2 - something about this objects design that  
stabilizes it's motion.

free-fall

INSIDE?



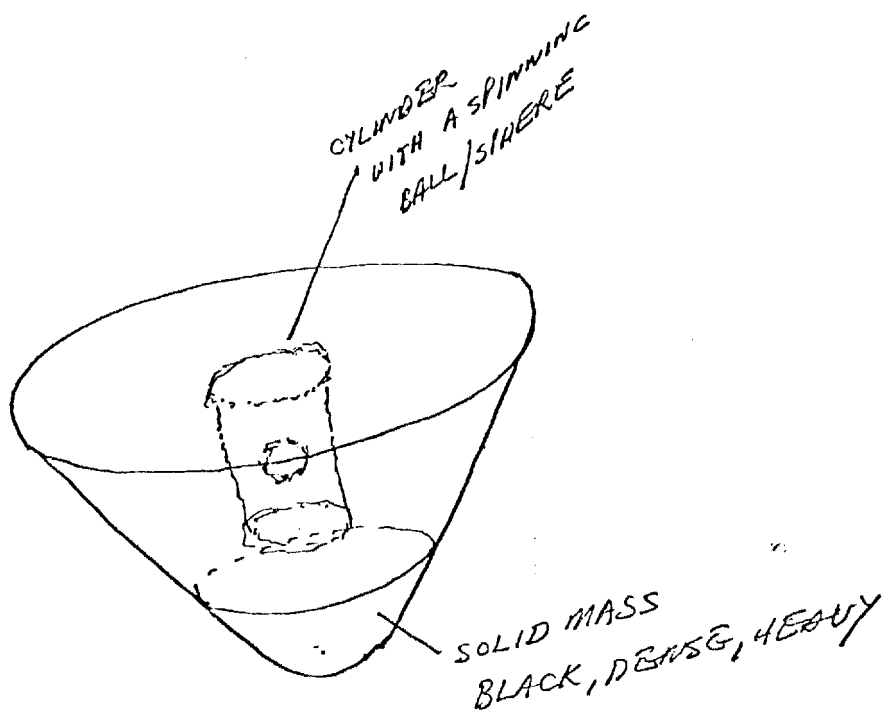
4 1/2 - getting two impressions, one is of a solid  
black mass - like the who object is one solid thing.  
- another impression of a cylindrical, cage-like  
object with a ball or sphere somehow suspended  
from something or somehow in the middle of this  
cylinder - the ball is spinning very fast.

balls function - to remain constant

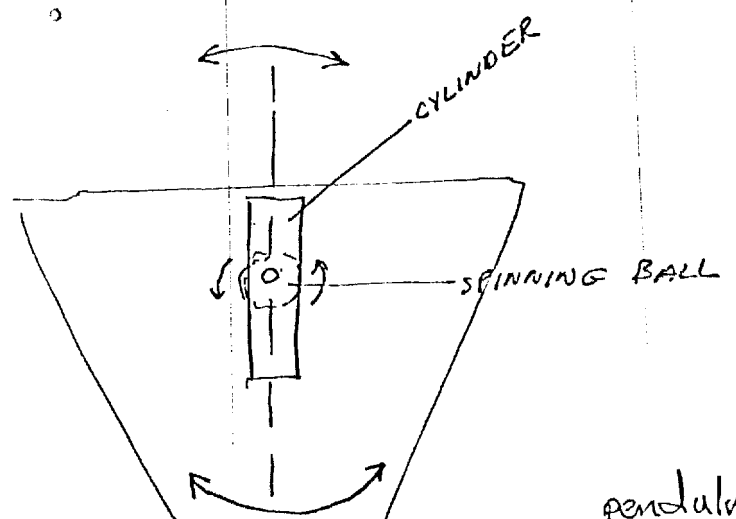
not break  
- like a gyro

~~SECRET~~

Dimensions of cylinder - impression, 7-8' in length  
by 3'-4' in diameter,



40- the cylinder has independent movement within object.



pendulum

T

AOL

A/S



$f \frac{1}{2}$  - gather information concerning the movement of military and naval forces in the Pacific Ocean. Follow, tag along, gather info - report back. The ability to follow undetected.

AOL  
UdSSR

~~SECRET~~

VIEWER 011  
713  
390017

~~SECRET~~

Approved For Release 2000/08/08 : CIA-RDP96-00789R000200110001-7



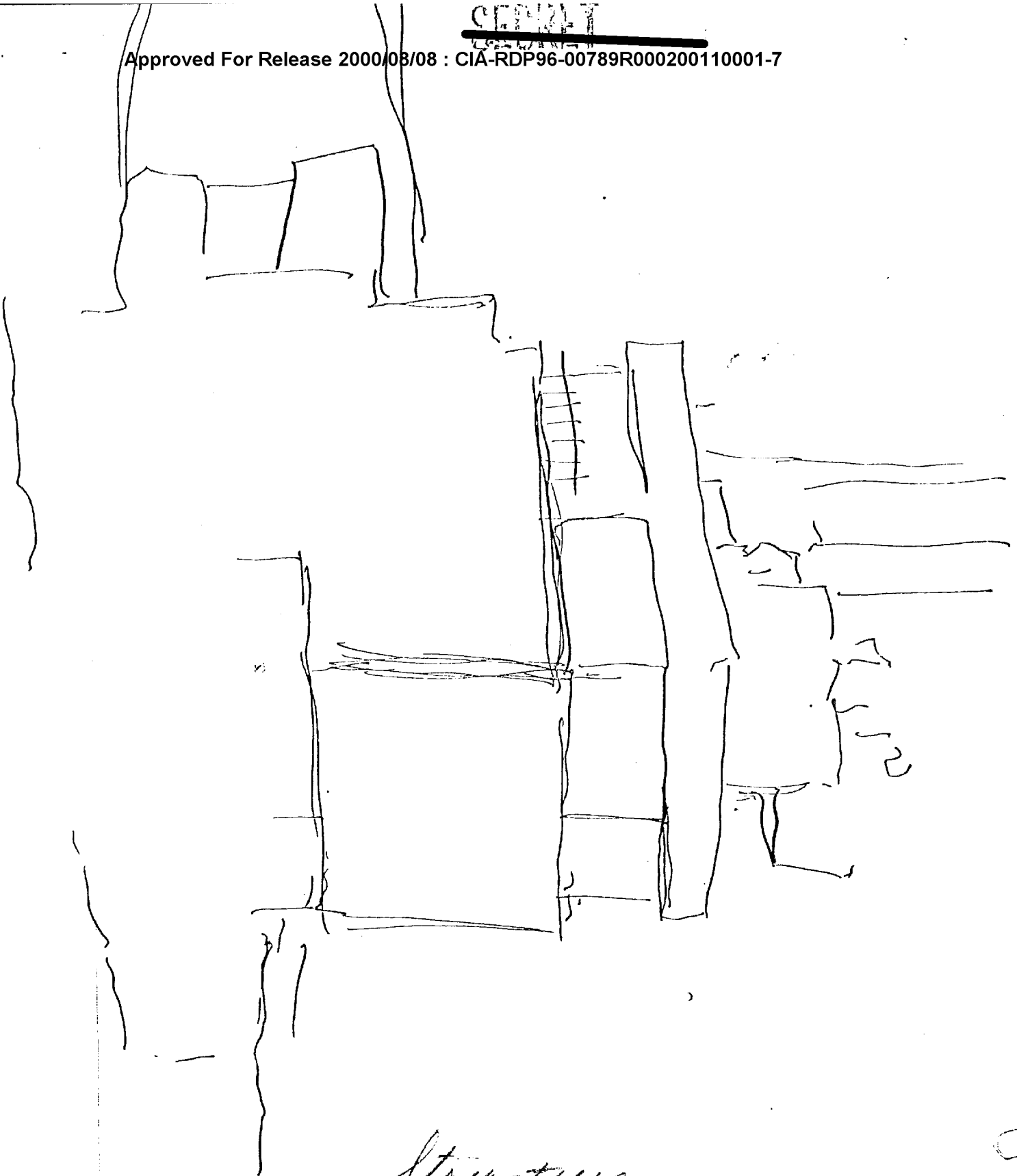
VIEWER 003  
72 OCT 87  
8713

Approved For Release 2000/08/08 : CIA-RDP96-00789R000200110001-7

~~SECRET~~

~~SECRET~~

Approved For Release 2000/08/08 : CIA-RDP96-00789R000200110001-7

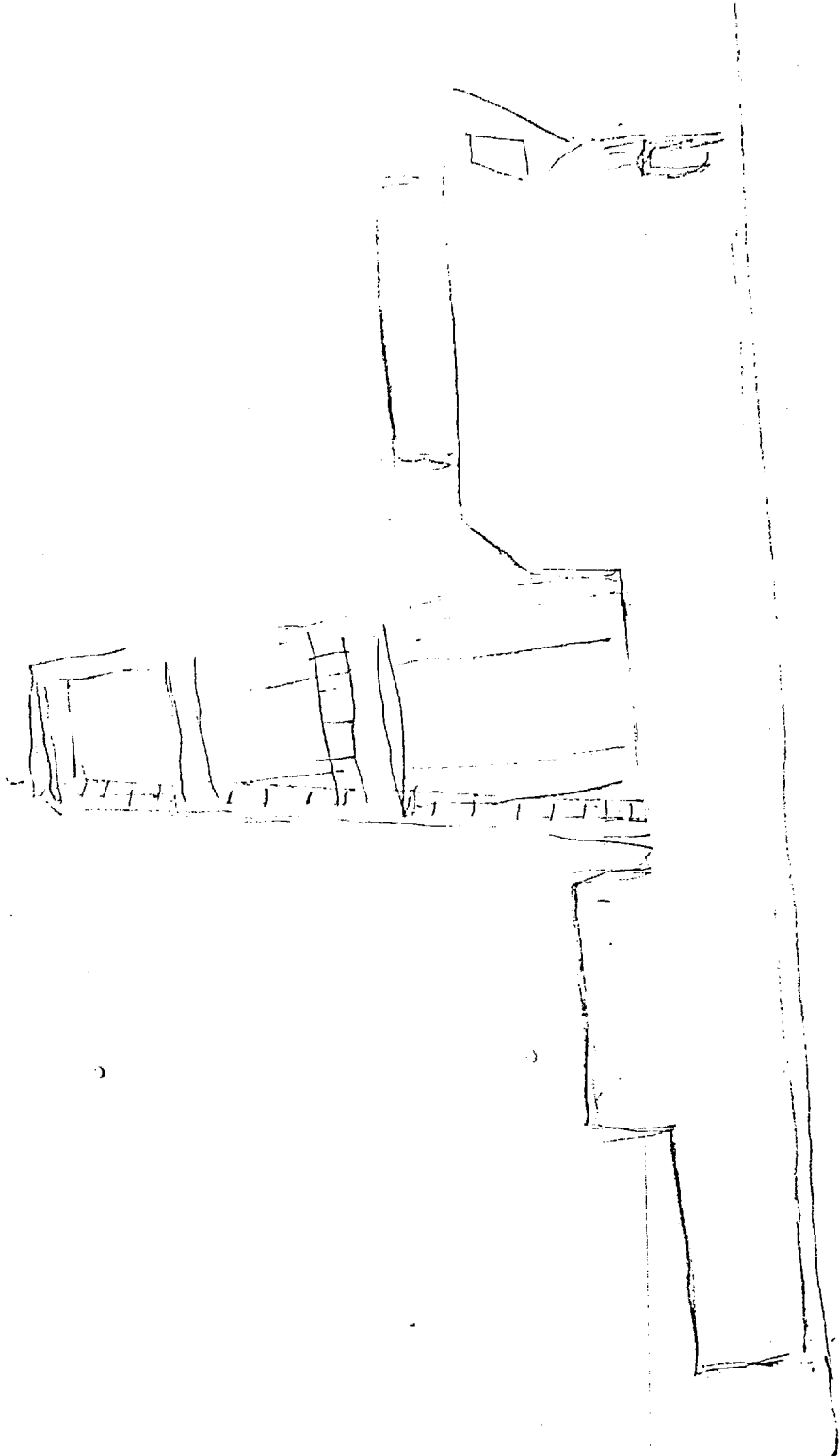


*Structure  
Superstructure?*

VIEWER CC 3  
20 Oct 87  
8713

~~SECRET~~

Approved For Release 2000/08/08 : CIA-RDP96-00789R000200110001-7



*Structure (As per drawing)*

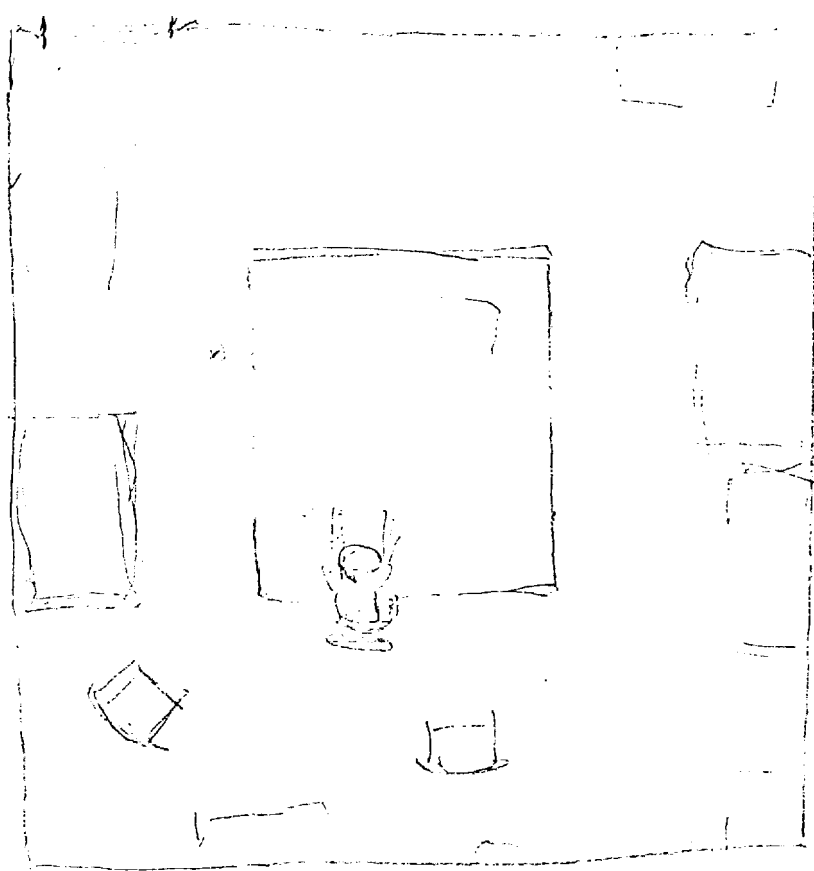
I-2

~~SECRET~~

VIEWER 003  
5 OCT 87  
8713

713 I-2

~~SECRET~~



*revised layout*

VIEWER 003  
8713  
5 Oct '87

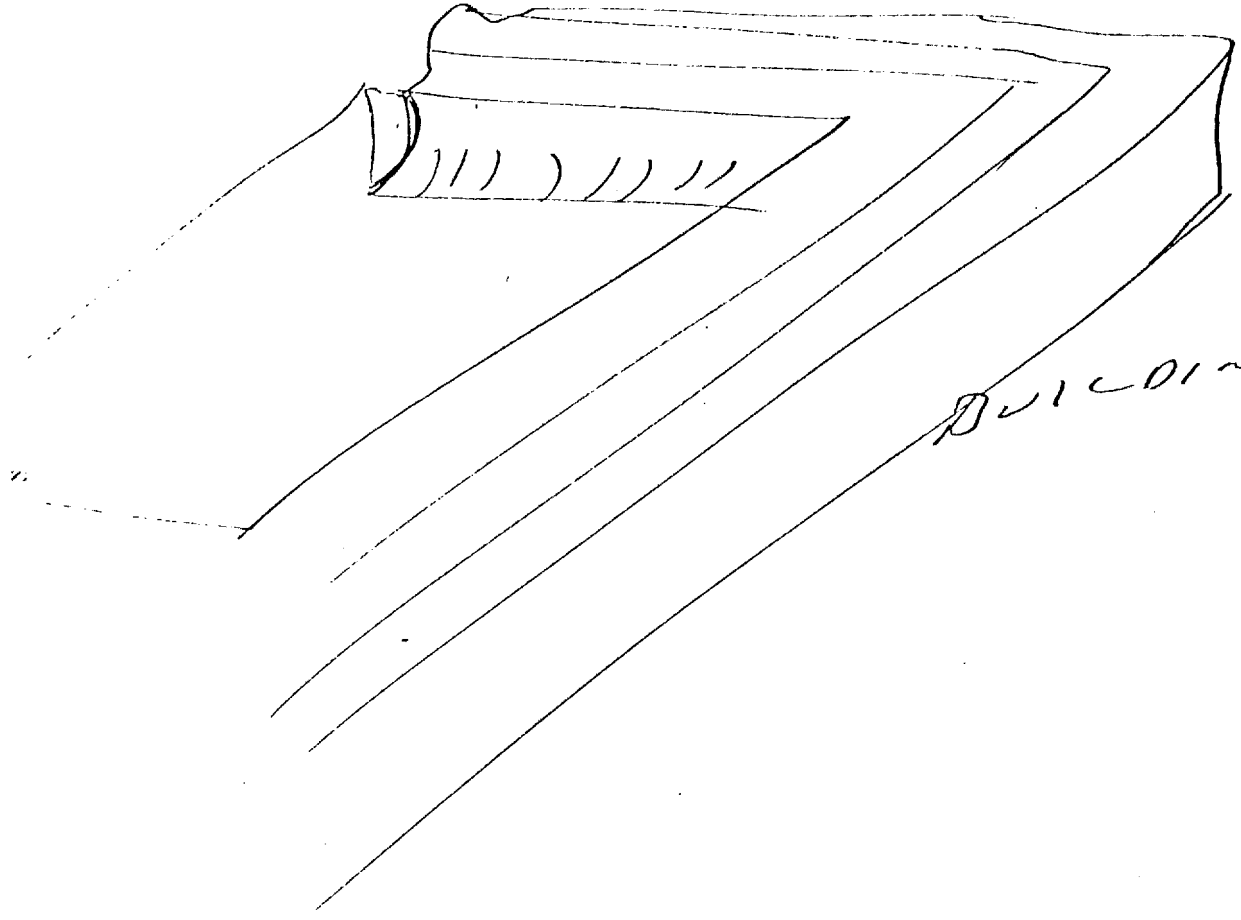
~~SECRET~~  
TAB J



~~SECRET~~

(7)

AM RAK-  
VISOR



Building

Structure-

VIEWER 018  
8713  
13 Oct 87

TAB K.  
~~SECRET~~

DESCRIPTION REPORT AT SIPS

(11)

S2                    5                    M                    U                    T                    1                    1921                    87.

POORLY

STANDARD

INSTRUMENT PANEL

LOOKING UP  
PRINTING

OTHERS LOOKING FOR  
PRINTING

REQUIRE

SKS

SLOTTER

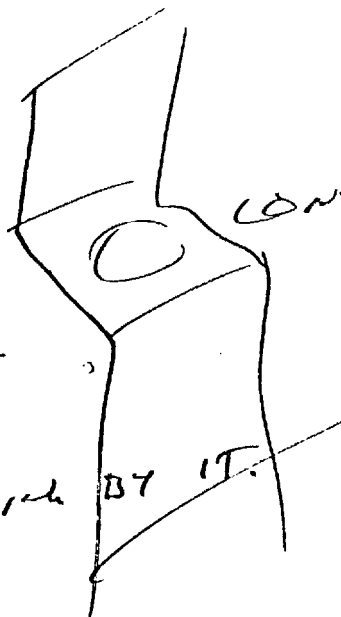
CONSOLE?

~~SECRET~~

CR07

PART OF WALL

POORLY STANDARD BY IT.



↑  
[CONSOLE]

~~SECRET~~

VIERER 013

87/3

22 Oct 87